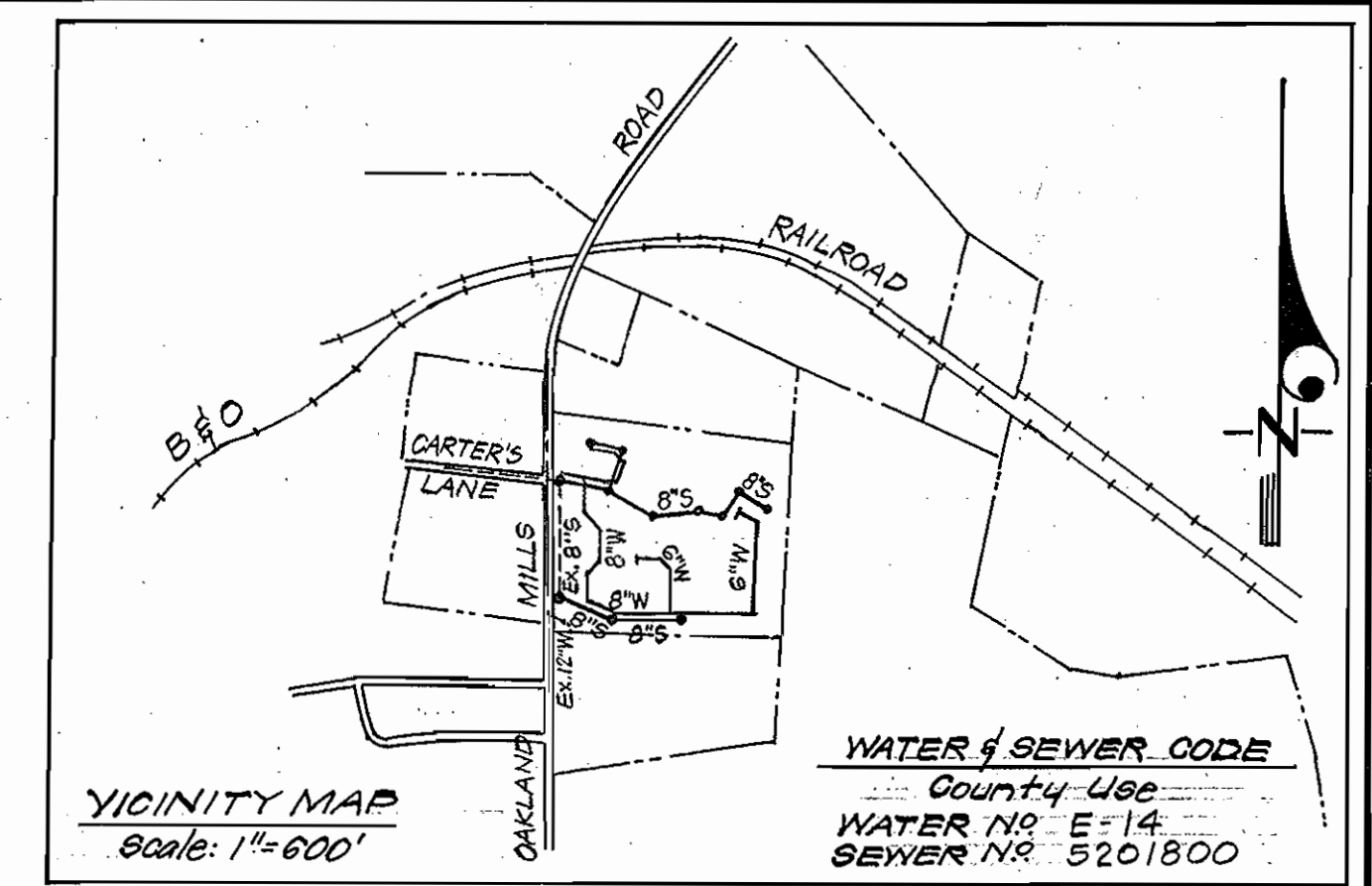
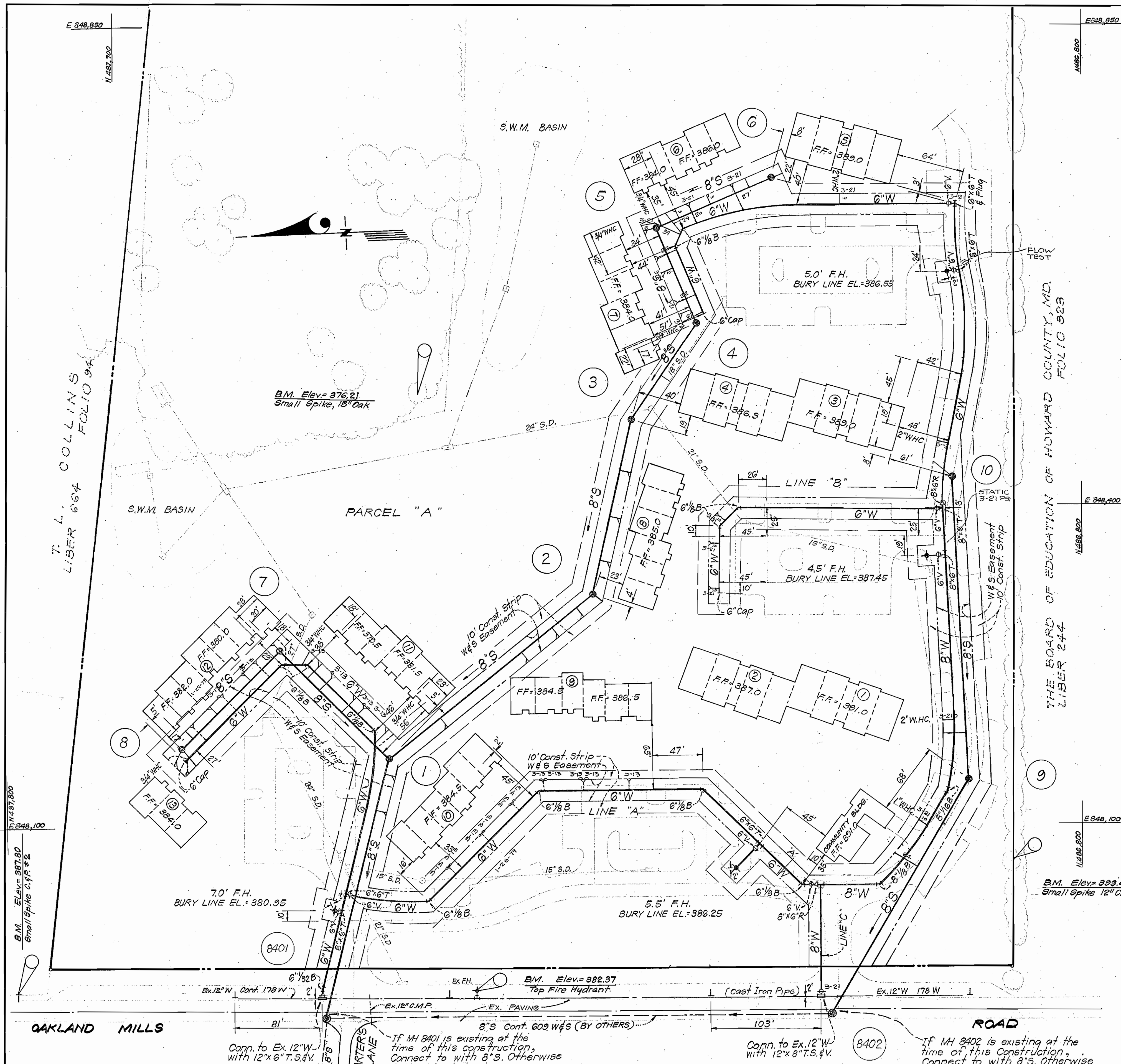


WS 812-WS/1



GENERAL NOTES

1. All water mains to be C.I.P., D.I.P. or A.C.P. unless otherwise shown.
2. Top of all water mains to have a minimum of 3.5ft. cover unless otherwise noted.
3. All valves shall be strapped to trees in accordance with standard details.
4. Block all fittings with concrete, see standards bound in specifications.
5. Bury line elevations on fire hydrants shall be set to the elevations shown on the drawings. All fire hydrants shall be strapped and buttressed with concrete in accordance with standard details. Soil around the pipe hydrants to be compacted in accordance with Section 5-15 of the standard specifications.
6. All sewer mains shall be C.S.P.X., Y.C.P.X., or A.C.P. Class 2400 unless otherwise noted.
7. The contractor shall provide a joint in all sewer mains within 2'-0\"/>
- 8. All manholes shall be 4'-0\"/>
- 9. Approximate locations of existing mains are shown. The contractor shall take all necessary precautions to protect existing mains and services and maintain uninterrupted supply. Any damage incurred shall be repaired immediately.
- 10. All horizontal controls are based on Maryland State Coordinates.
- 11. All vertical controls are based on U.S.G.S. Datum.
- 12. All pipe elevations shown are invert elevations.
- 13. Clear all utilities by a minimum of 6\", clear all poles by 2'-0\"/>
- 14. For all standard details are standards bound in specifications.
- 15. Contractor shall locate existing utilities in advance of construction operations in the vicinity of proposed utilities.
- 16. Contractor shall notify the following utilities or agencies at least five (5) days before starting work, shown on these plans:
 - State Highway Administration - 531-5593
 - Baltimore Gas and Electric Company - Underground Electric Distribution Engineering - "Damage Control" - 234-5631
 - Baltimore Gas and Electric Company - Underground Gas Distribution Engineering - 553-0100
 - Chesapeake and Potomac Telephone Co. - 725-9076
 - Ameripol Telephone and Telegraph - Cable Location Division - 301-303-3553
 - Colonial Pipeline Company - 781-4641
- 17. Trees are to be protected from damage to maximum extent. Trees located within the construction strip are not to be removed or damaged by the contractor.
- 18. Contractor shall remove trees, stumps, and roots along line of excavation as directed by the Engineer. Payment for such removal shall be included in the unit price bid for excavation and backfill for water and sewer mains.
- 19. Place regulation "Men Working" and warning signs as required to comply with Maryland State Highway Administration Manual of Traffic Control for Highway Construction and Maintenance Operations.

QUANTITIES			
ITEM	BID	AS-BUILT	MATERIAL/SUPPLIER
6" Water	1930 LF.		
8" Water	540 LF.		
8" Sewer	1765 LF.		
F.H.'s	4		



S. Nelson Clark
9-13-78

CLARK • FINEFROCK & SACKETT
ENGINEERS • PLANNERS • SURVEYORS
11315 LOCKWOOD DRIVE • SILVER SPRING, MARYLAND • (301) 593-3400

DEPARTMENT OF PUBLIC WORKS
HOWARD COUNTY, MARYLAND
Richard E. Brendenkamp 9/20/78
DIRECTOR OF PUBLIC WORKS DATE

W. O. Gilbert 9-20-78
CHIEF, BUREAU OF ENGINEERING DATE

CONTRACT NO. 812-D W&S

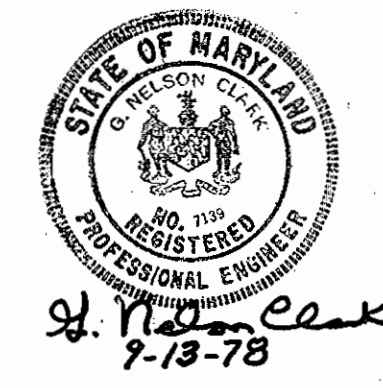
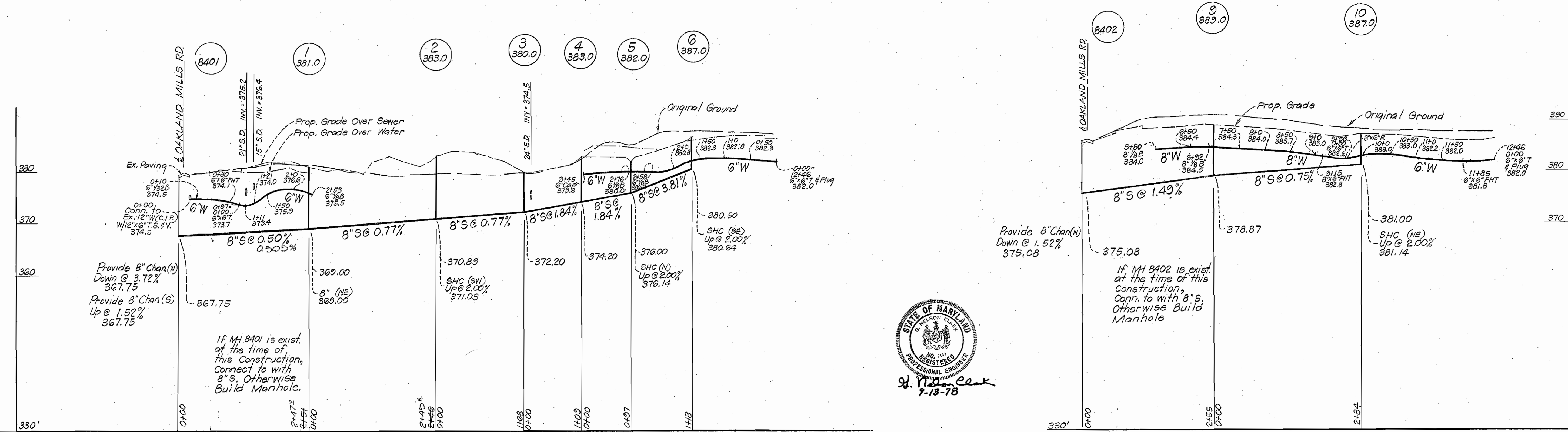
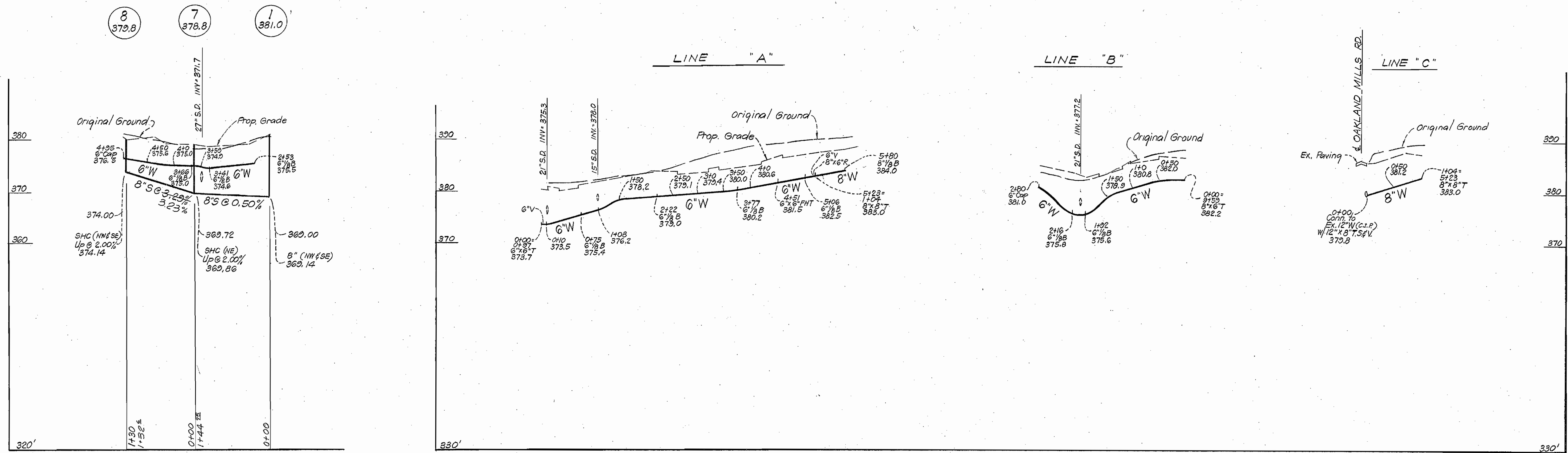
PLAN OF
WATER & SEWER MAINS

GUILFORD GARDENS
ELECTION DISTRICT - GUILFORD No. 6

DRAWING NO. OF 2 OF 2
SCALE 1" = 50'

OAKLAND MILLS
CARTER'S LANE
ROAD
Parcel "A" boundaries and easements are shown. Notes include: "If MH 8401 is existing at the time of this construction, Connect to with 8\"/>

WS 812 - WS/2



CLARK • FINEFROCK & SACKETT ENGINEERS • PLANNERS • SURVEYORS 11315 LOCKWOOD DRIVE • SILVER SPRING, MARYLAND • (301) 593-3400	DEPARTMENT OF PUBLIC WORKS HOWARD COUNTY, MARYLAND <i>Richard S. Sundenberg</i> 9/20/78 <i>W.D. Albert</i> 9-20-78 DIRECTOR OF PUBLIC WORKS DATE CHIEF, BUREAU OF ENGINEERING DATE		CONTRACT NO. 812 D WS	PROFILES OF WATER & SEWER MAINS	GUILFORD GARDENS ELECTION DISTRICT - GUILFORD No. 6	DRAWING NO. 2 OF 2	SCALE 1" = 100'
	<small>AS-BUILT JAN. 21, 1981 BAL</small>						