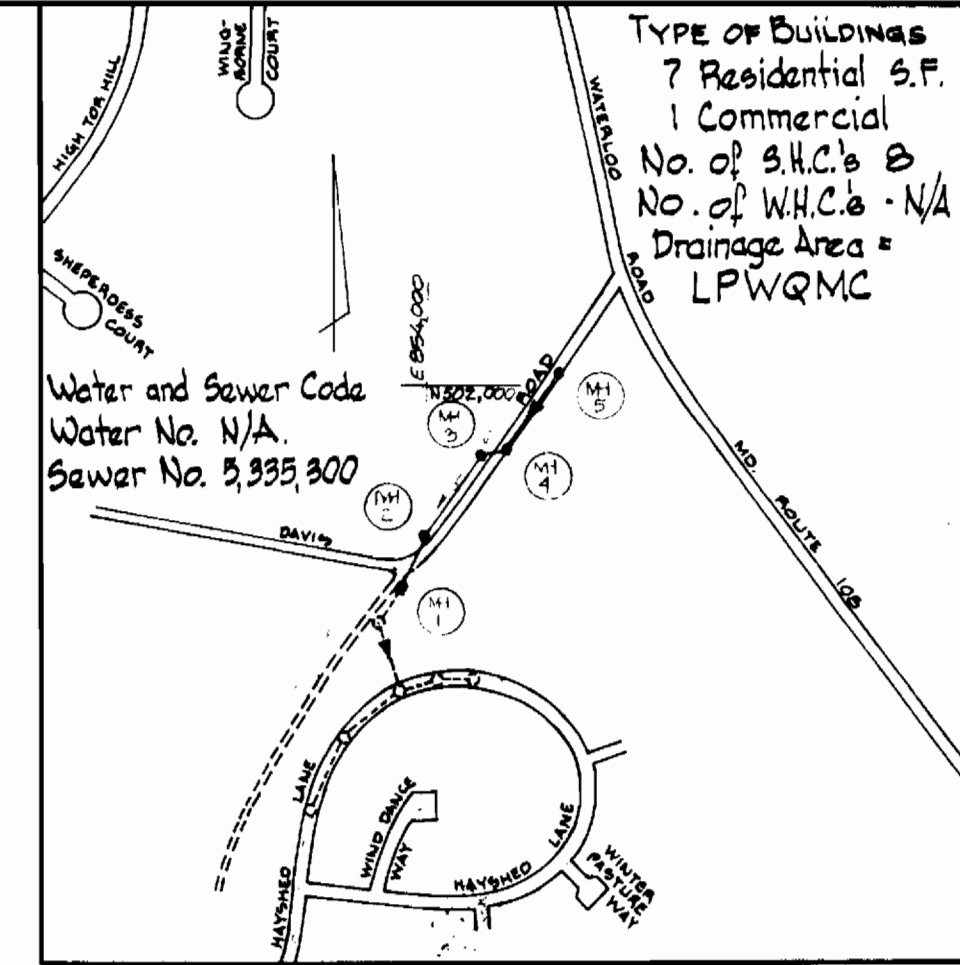


BENCH MARK "A" - ELEV. 476.60
R.R. Spike set in base of G&E Pole No. 124106

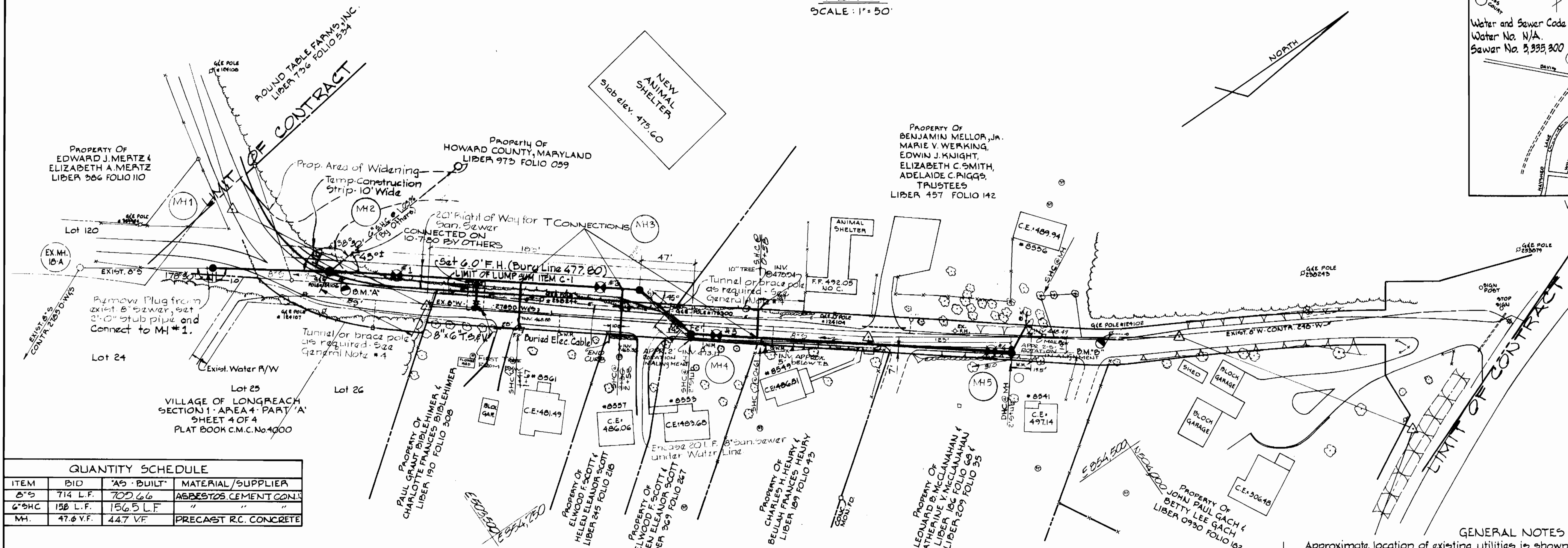
NOTE:
Contractor shall limit all work between MH#4 & MH#5 to within the 30' County Right-of-way including the storage of material, equipment and excavated material.

BENCH MARK "B" - ELEV. 506.06
R.R. Spike set in base of G&E Pole No. 124102

PLAN
SCALE: 1" = 50'



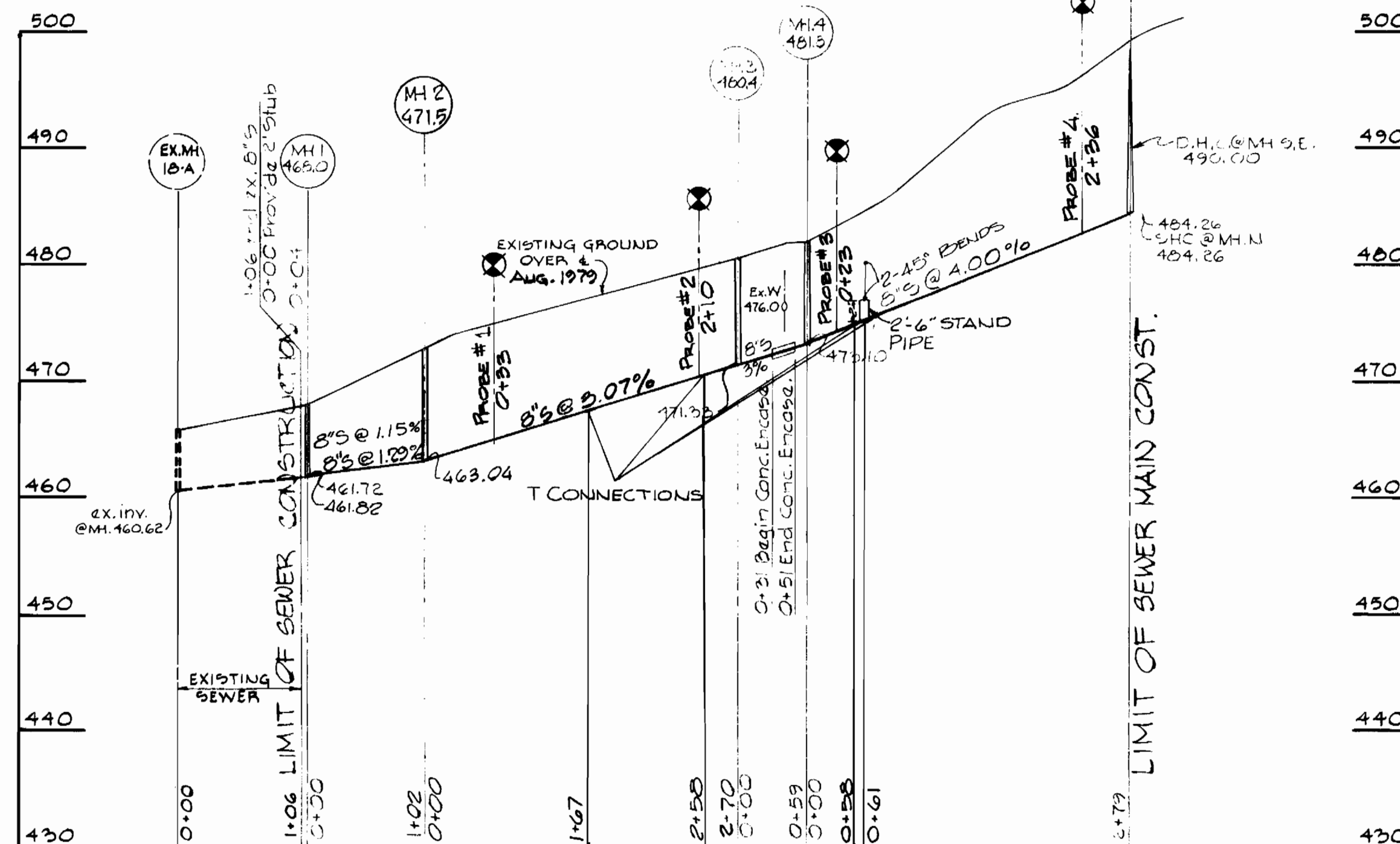
VICINITY MAP
SCALE: 1" = 600'



QUANTITY SCHEDULE			
ITEM	BID	'AS-BUILT'	MATERIAL/SUPPLIER
6" S	714 L.F.	702 L.F.	ASBESTOS CEMENT CONJ
6" SHC	158 L.F.	156 L.F.	"
MH	47.6 V.F.	44.7 V.F.	PRECAST R.C. CONCRETE

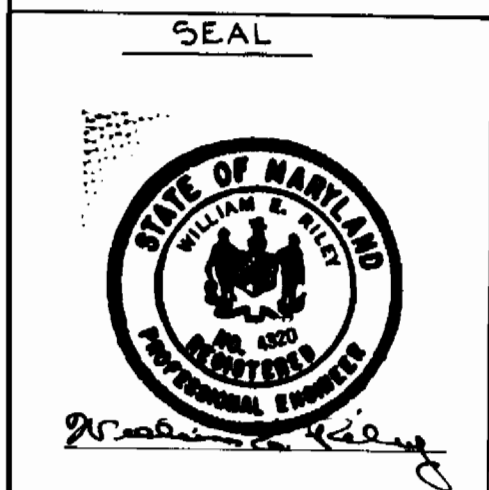
SPECIAL NOTE

AUGER PROBE INFORMATION IS AVAILABLE UPON REQUEST FROM THE OFFICE OF THE CONSTRUCTION INSPECTION AND SURVEY DIV. HOWARD COUNTY DEPARTMENT OF PUBLIC WORKS 3450 COURT HOUSE DRIVE, ELLICOTT CITY, MD 21043 JOHN LEE CARROLL BUILDING - TELE (301) 992-2417



PROFILE
SCALE: HORIZ. 1" = 100'
VERT. 1" = 10'

- GENERAL NOTES**
- Approximate location of existing utilities is shown. The Contractor shall take all necessary precautions to protect the existing utilities and to maintain uninterrupted service. Any damage incurred shall be repaired immediately to the satisfaction of the Engineer by the Contractor at the Contractor's expense.
 - The Contractor shall locate existing utilities a minimum of two weeks in advance of construction operations in vicinity of utilities. Cost shall be included in the unit prices bid for excavation and backfill for mains.
 - Contractor shall notify the following utilities or agencies at least five (5) days before starting work shown on these plans:
Miss Utility - 800-441-8335 or (Collect) 1-559-0100
Baltimore Gas & Electric Company - Underground Electric Distribution Engineering "Damage Control" - 234-7481
Baltimore Gas & Electric Company - Underground Gas Distribution Engineering - 234-5800.
Chesapeake and Potomac Telephone Co. 725-9976.
 - Clear all utilities by a minimum of 6'. Clear all poles 2'-0" minimum or tunnel as required. Cost for tunneling or bracing at poles shall be included in the unit prices bid for excavation and backfill for sewer mains.
 - All pipe elevations shown are invert elevation.
 - All manholes shall be 4'-0" inside diameter.
 - The Contractor shall provide a pipe joint in each sewer main within 2'-0" of exterior of Manhole walls.
 - For details not shown on the Contract Drawings see Std. Details bound in the specifications.
 - Trees are to be protected from damage to the maximum extent.
 - Place regulation "Men Working" and warning signs as required to comply with Maryland State Highway Administration Manual of Traffic Control for Highway Construction and Maintenance Operations.
 - All sewer mains shall be C.S.P.X., V.C.P.X. or A.C.P. Class 2400 unless otherwise noted.
 - Horizontal and vertical controls are based on the Maryland State Grid Coordinate System.



DEPARTMENT OF PUBLIC WORKS
HOWARD COUNTY, MARYLAND

James F. Neuman 6-2-80
DIRECTOR OF PUBLIC WORKS DATE

James L. Ellis 5-18-80
CHIEF-BUREAU OF ENGINEERING DATE

DEPARTMENT OF PUBLIC WORKS
BUREAU OF ENGINEERING
CONSTRUCTION INSPECTION AND SURVEY DIVISION

CONTRACT NO. 808WES
CAPITAL PROJECT S-7-6080

PLAN AND PROFILE
SEWER

DAVIS ROAD
SEWER MAIN EXTENSION
ELECTION DISTRICT NO. 6

DRAWING NO. 1 OF 1
SCALE AS SHOWN

Rev. No.	Rev. Date	Revision Description
1	7-25-80	Changed 8" 6" T&V to 8" 6" T&V
		Revision Description

Contract No. 2808 WES
Davis Road Sewer Extension
Part of Jonestown Collector
Capital Project S-7-6080