

VICINITY MAP
Scale: 1"=600'

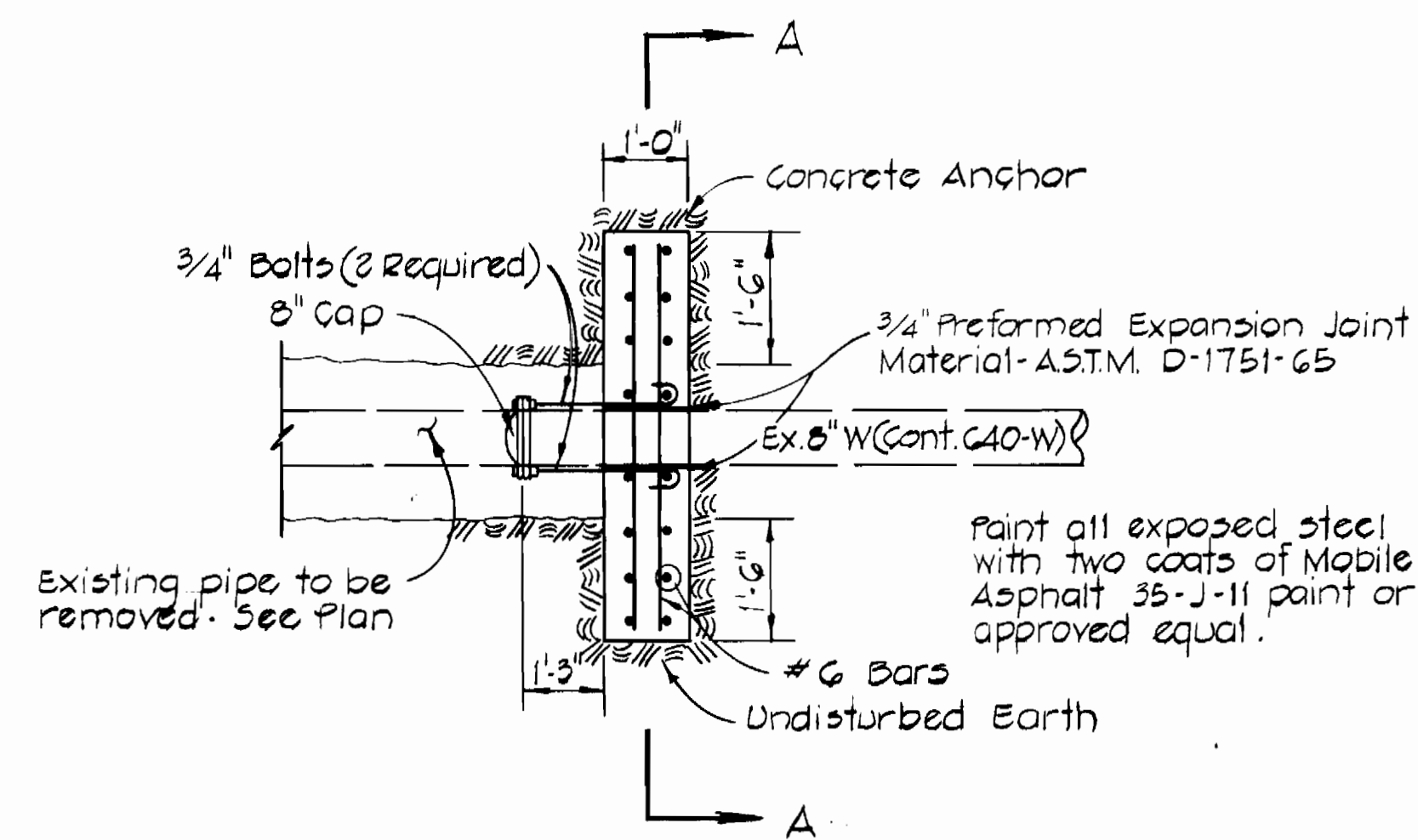
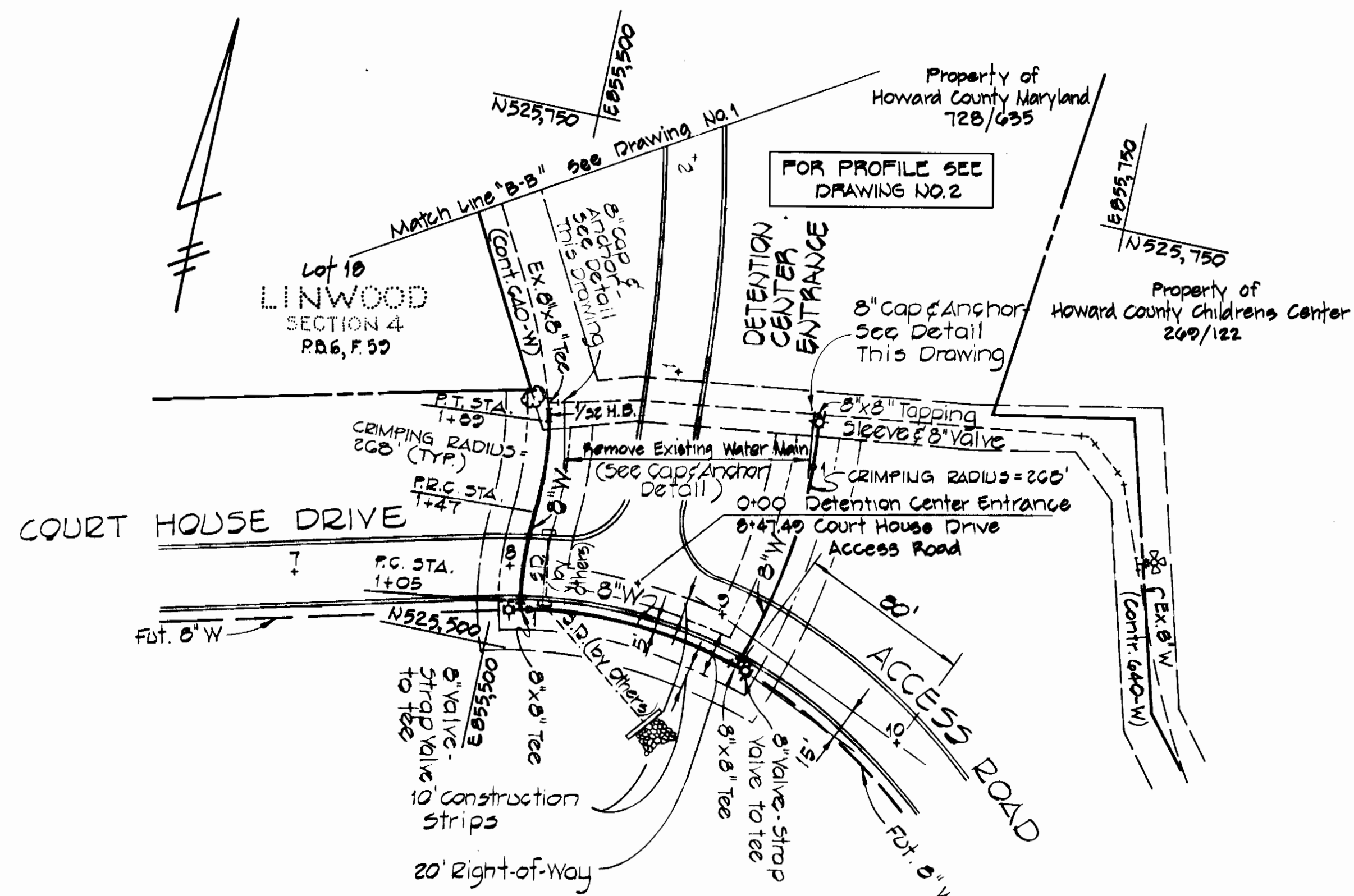
GENERAL NOTES

- Notice - No sewer work is included in this contract.
1. Approximate locations of existing utilities are shown. The Contractor shall take all necessary precautions to protect the existing utilities and to maintain uninterrupted service. Any damage incurred due to the Contractor's operation shall be repaired immediately at the Contractor's expense.
 2. All pipe elevations shown are invert elevations.
 3. The Contractor shall locate existing utilities well in advance of construction activities.
 4. See standard details bound in specifications.
 5. Clear all utilities by a minimum of 6 inches. Clear all utility poles by 2'-0" minimum or tunnel as required. Any costs incurred to the Contractor for tunneling or bracing poles shall be included in the unit price bid for excavation.
 6. The Contractor shall provide pipe joint in all sewer mains within 2'-0" of exterior manhole walls.
 7. The sewer main shall be V.C.P.X., C.S.P.X or A.C.P. Class 2400, unless otherwise noted.
 8. All manholes shall be 4'-0" inside diameter, unless otherwise noted.
 9. Buttress or anchor all water main fittings with concrete. All valves shall be strapped to tees in accordance with standard details.
 10. All water mains to have a minimum of 3.5' cover unless otherwise noted.
 11. All fire hydrants shall be strapped to the tee and shall be buttressed with concrete in accordance with standard details. Cost of strapping fire hydrants and valves to be included in the unit price bid for furnishing and installing fire hydrants. Soil around the fire hydrant to be compacted in accordance with Section 5-15 of the Standard Specifications.
 12. Bury line elevations on fire hydrants shall be set to the elevations shown on the plan.
 13. All horizontal controls are based on Maryland State Coordinates.
 14. All vertical controls are based on Maryland State Datum.
 15. All water mains shall be D.I.P. only.
 16. Manhole #1 shall have watertight frame and cover in accordance with Standard Detail S-12 (RCR-63A).

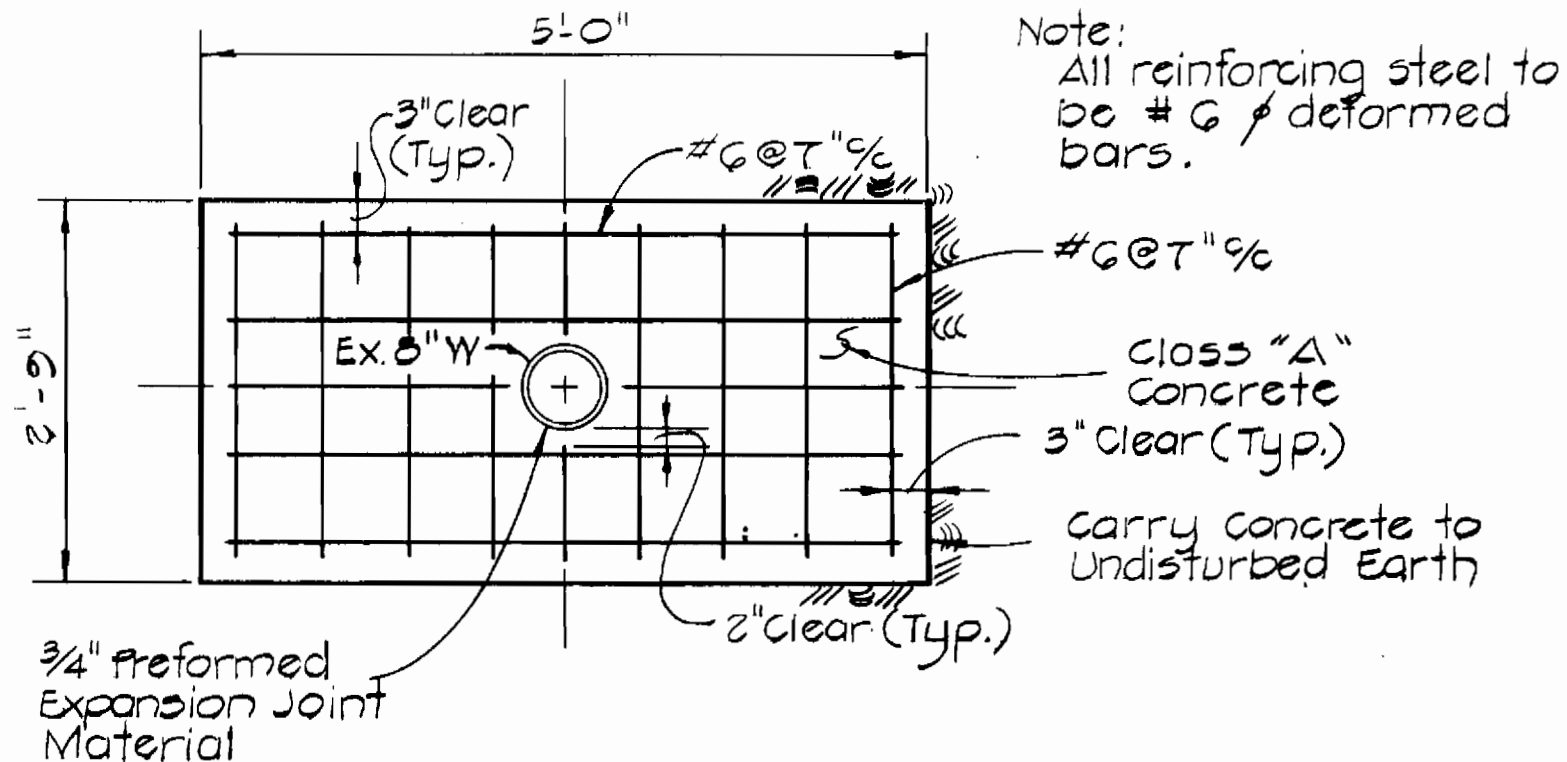
QUANTITIES			
ITEM	PROPOSED	AS-BUILT	SUPPLIER
8" Water	700 L.F.		
6" Water	Future		
Fire Hydrants	Future		
8" Sewer	Future		
6" H.C.	Future		
Manholes	Future		
4" W.H.C.	Future		
3" W.H.C.	Future		

CONTRACT NO. C-5-0123
CAPITAL PROJECT NO. C-5-0123
WATER AND SEWER MAIN EXTENSION
HOWARD COUNTY DETENTION CENTER

PURDUM & JESCHKE ENGINEERS 1023 N. CALVERT ST. BALTIMORE, MARYLAND	DEPARTMENT OF PUBLIC WORKS HOWARD COUNTY, MARYLAND R.E. Freudenberger 7/20/78 DIRECTOR OF PUBLIC WORKS DATE	CONTRACT NO. 804 D-W CAPITAL PROJECT NO. C-5-0123	PLAN OF WATER AND SEWER MAINS	HOWARD COUNTY DETENTION CENTER ELECTION DISTRICT NO. 2 HOWARD COUNTY, MARYLAND	DRAWING NO. 1	SCALE AS SHOWN	Designed: TAF Drafted: ARZ Checked: TAF
					OF 3		



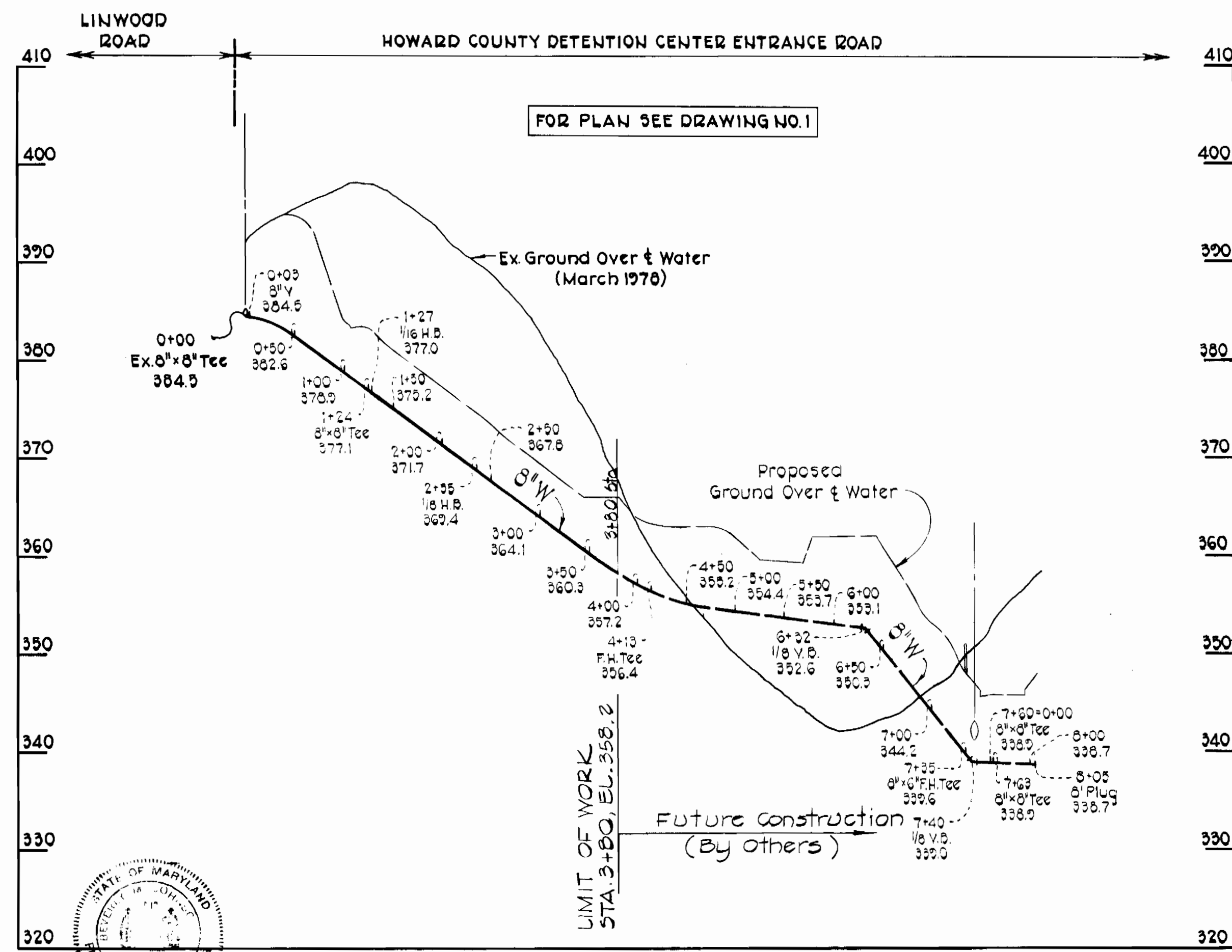
CAP AND ANCHOR DETAIL
Scale: 1/2" = 1'-0"



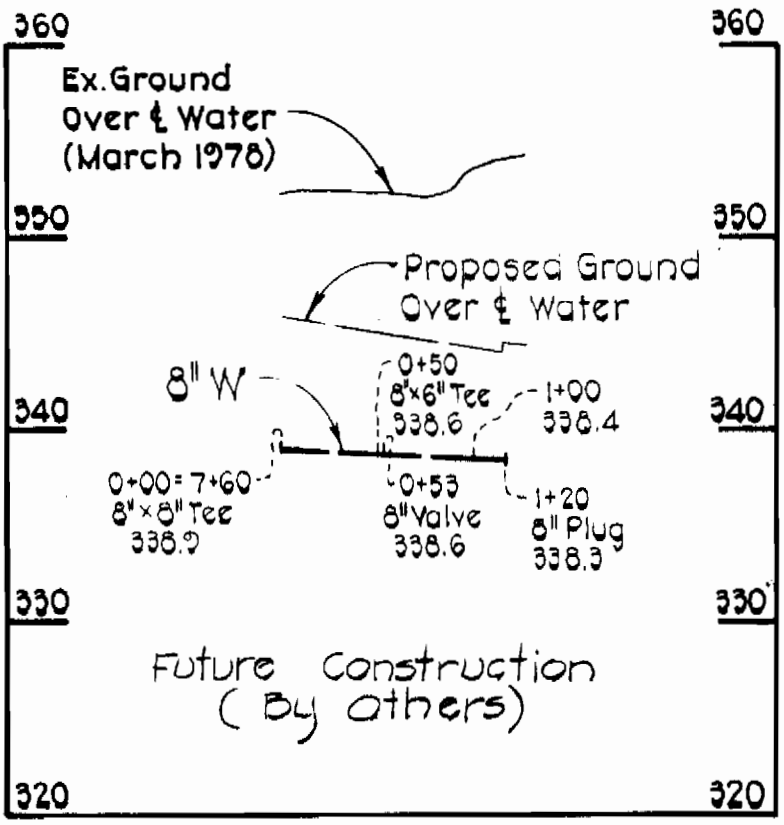
SECTION "A-A"
CONCRETE ANCHOR
Scale: 3/4" = 1'-0"

- CONSTRUCTION SEQUENCE @ INTERSECTION
ACCESS ROAD AND ENTRANCE ROAD**
1. Install 8" Tapping Sleeve and Valve.
 2. Construct 8" main in Access Drive from 8" T.S. & V. to existing 8" Tee (Sta. 1+21).
 3. Test and disinfect new main.
 4. Prepare concrete buttresses.
 5. Prepare connection at end of Linwood Road for installation of 8" Valve.
 6. Shut down mains, cut existing mains as required, complete buttresses and install 8" Valve.
 7. Open valves necessary to restore service.

This construction sequence shall be followed to minimize interruption of service to existing customers. Valves shall be operated only under authority of Bureau of Utilities.



PROFILE
Scale: Horiz. 1" = 100'
Vert. 1" = 10'



CONTRACT NO. C-5-0123
CAPITAL PROJECT NO. C-5-0123
WATER AND SEWER MAIN EXTENSION
HOWARD COUNTY DETENTION CENTER

PURDUM & JESCHKE
ENGINEERS
1023 N. CALVERT ST.
BALTIMORE, MARYLAND

DEPARTMENT OF PUBLIC WORKS
HOWARD COUNTY, MARYLAND
R.E. Brudenberg 7/21/78
DIRECTOR OF PUBLIC WORKS DATE
W.O. Albert 7-20-78
CHIEF BUREAU OF ENGINEERING DATE

CONTRACT NO. 804 D-W
CAPITAL PROJECT NO. C-5-0123

PLAN, PROFILES AND DETAILS
WATER AND SEWER MAINS

HOWARD COUNTY DETENTION CENTER
ELECTION DISTRICT NO. 2
HOWARD COUNTY, MARYLAND

DRAWING NO. 3	SCALE AS SHOWN	Designed-TAF
OF 3		Drafted-ARZ
		Checked-TAF