

Pipe Used: 12" & 16" D.I.P. - U.S. Pipe (Bid Item 16)  
 6", 8", 10" & 12" D.I.P. Nipples (Lining Hole) U.S. Pipe (except as noted)  
 Valves Used: 6", 8", 12" Met. Valves (M&H)  
 (8) 6" Mueller F.H. Valves Used  
 (1) 6" A.P. Smith F.H. Valve Used.  
 F.H.'s Used: (4) M&H F.H.'s used.  
 Couplings Used: Dresser & Smith-Blair.

**CAPITAL PROJECT W-4-8024**  
**CONTRACT NO. 792-W**  
**WATER MAIN CLEANING AND LINING PROJECT**  
**JESSUP WATER MAIN DISTRIBUTION SYSTEM**  
**HOWARD COUNTY, MARYLAND**  
**DEPARTMENT OF PUBLIC WORKS**



CONTRACT NO. 792-W  
 CAPITAL PROJECT NO. W-4-8024  
 WATER MAIN CLEANING AND LINING PROJECT  
 JESSUP WATER MAIN DISTRIBUTION SYSTEM  
 HOWARD COUNTY, MARYLAND

2/21/80	Δ	As Built Information
Rev. Date	Rev. No.	Rev. Description

PURDUM & JESCHKE ENGINEERS 1023 N. CALVERT ST. BALTIMORE, MARYLAND	DEPARTMENT OF PUBLIC WORKS HOWARD COUNTY, MARYLAND <i>Richard E. Purdum</i> 6/28/78 DIRECTOR OF PUBLIC WORKS DATE	CONTRACT NO. 792-W CAPITAL PROJECT NO. W-4-8024	LOCATION MAP	WATER MAIN CLEANING AND LINING PROJECT JESSUP WATER MAIN DISTRIBUTION SYSTEM ELECTION DISTRICTS 1 & 6	DRAWING NO. 1 OF 7 SCALE 1" = 600'	DESIGNED: TAF DRAFTED: ARZ CHECKED: TAF
						DATE: 6-28-78 CHIEF BUREAU OF ENGINEERS DATE

**BENCH MARKS**

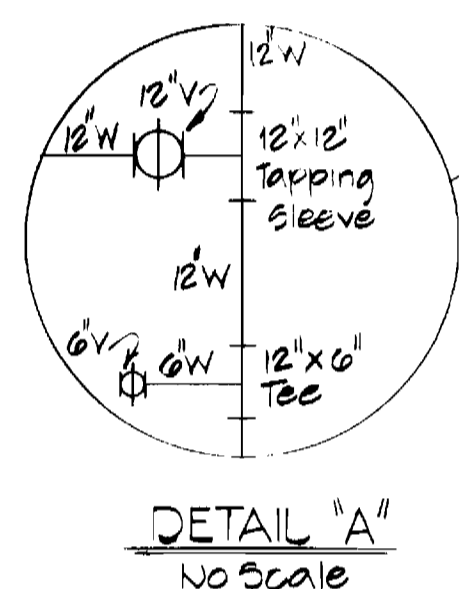
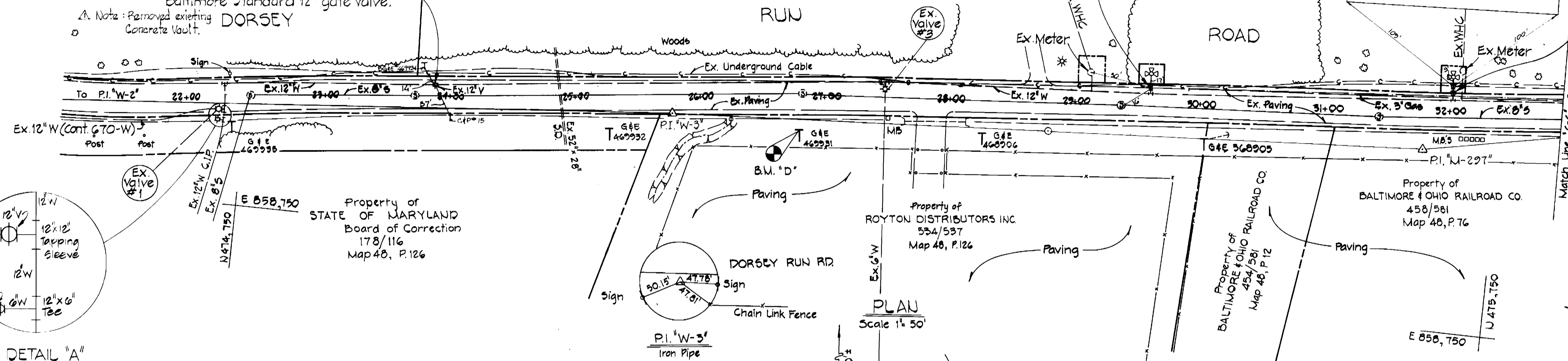
- B.M. "D" Elev. 219.82  
Railroad spike set in G#E pole # 469931,  
100'± North of P.I. "W-3"
- B.M. "E" Elev. 228.09  
Railroad spike set in base of 4" oak. 45'±  
East of P.I. "W-4"
- B.M. #1 Elev. 212.11  
Bonnet bolt in fire hydrant West side of  
Dorsey Run Road, 100'± South of G#E pole  
# 263660

Property of  
STATE OF MARYLAND  
Department of Mental Hygiene  
282/77  
Map 48 P.48

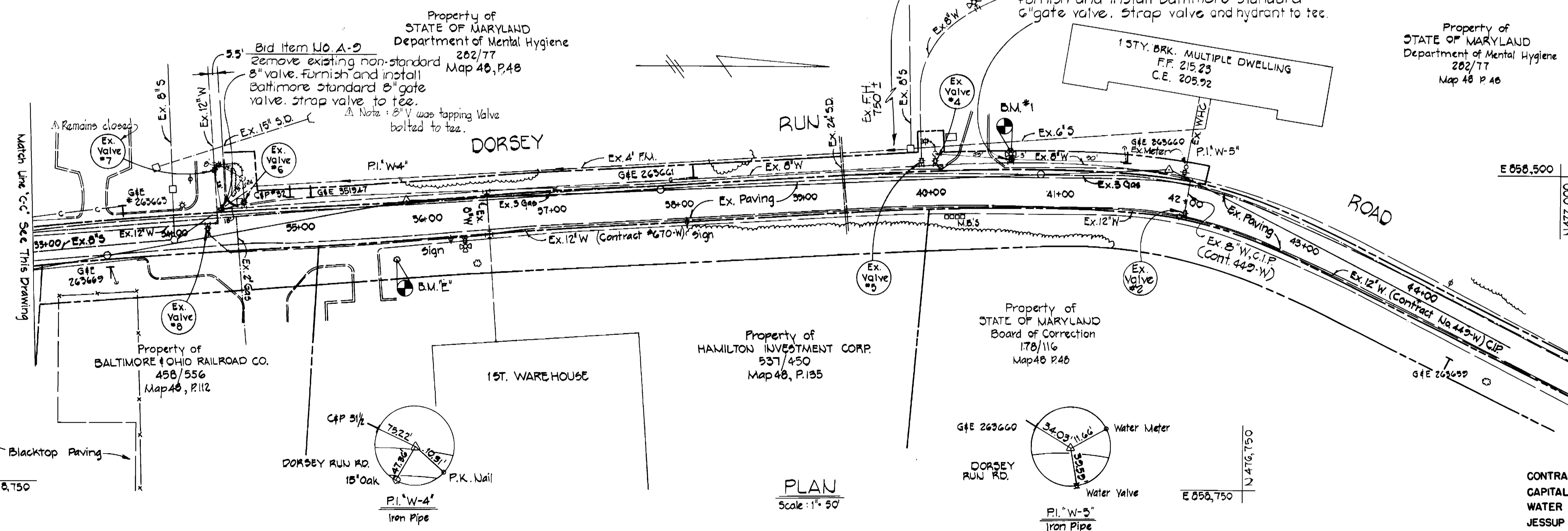
**Bid Item No. A-8**  
Remove existing non-standard  
12" gate valve. Furnish and install  
Baltimore Standard 12" gate valve.  
A Note: Remove existing  
Concrete Vault.

**Bid Item No. A-11**  
Remove existing non-standard  
G" valve. Furnish and install  
Baltimore Standard G" gate  
valve. Strap valve and hydrant  
to tee.

**Bid Item No. A-11**  
Remove existing non-  
standard G" valve.  
Furnish and install  
Baltimore Standard  
G" gate valve. Strap  
valve and hydrant to tee.



**PLAN**  
Scale: 1" = 50'



**PLAN**  
Scale: 1" = 50'

CONTRACT NO. 792-W  
CAPITAL PROJECT NO. W-4-8024  
WATER MAIN CLEANING AND LINING PROJECT  
JESSUP WATER MAIN DISTRIBUTION SYSTEM  
HOWARD COUNTY, MARYLAND

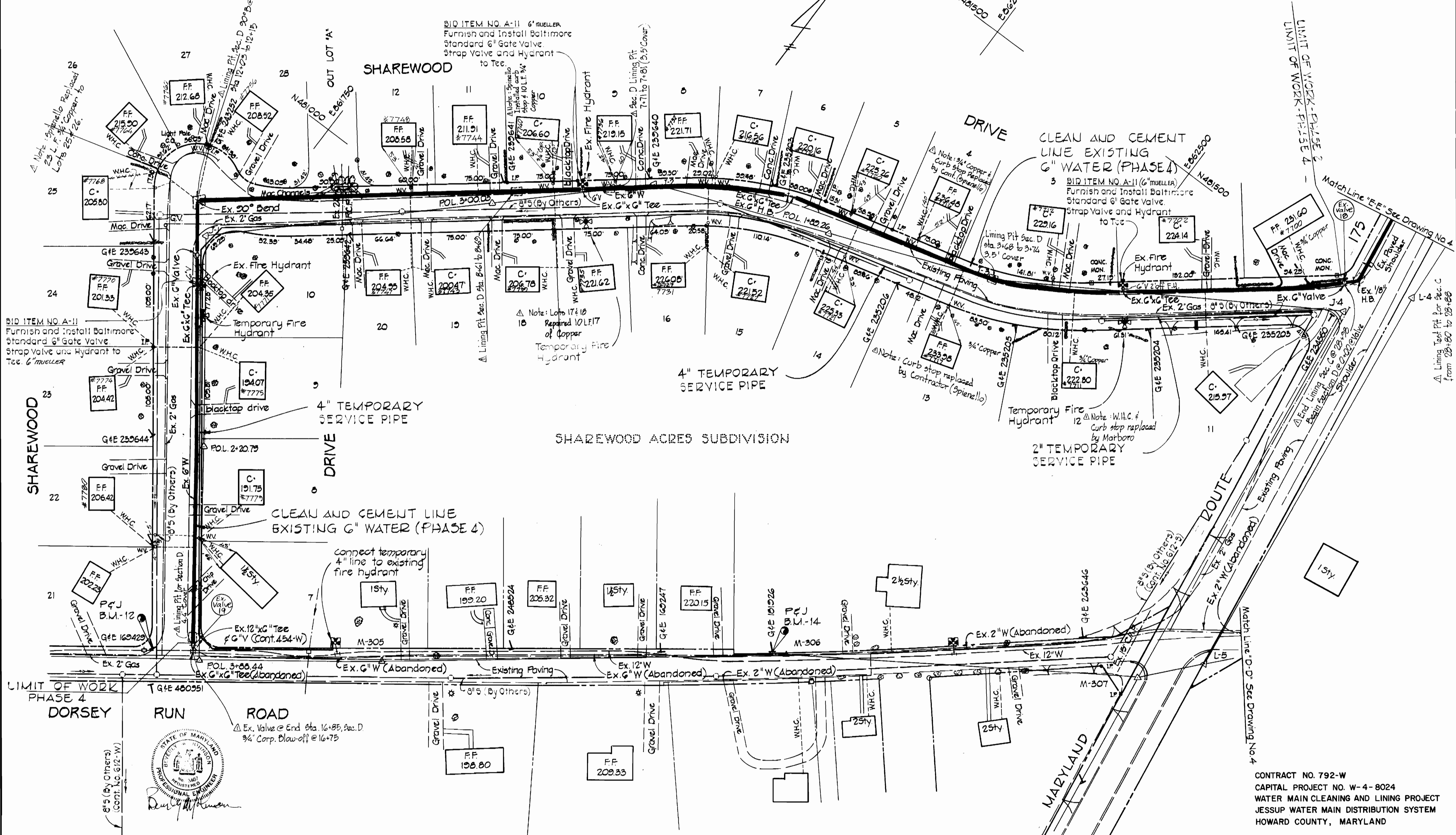
Notes As Built Information.

<p><b>PURDUM &amp; JESCHKE</b> ENGINEERS 1023 N. CALVERT ST. BALTIMORE, MARYLAND</p>	<p><b>DEPARTMENT OF PUBLIC WORKS</b> HOWARD COUNTY, MARYLAND R.E. Freudenberger 6/28/78 DIRECTOR OF PUBLIC WORKS DATE W.C. Talbert 6-28-78 CHIEF BUREAU OF ENGINEERING DATE</p>	<p>CONTRACT NO. 792-W CAPITAL PROJECT W-4-8024</p>	<p><b>PLAN</b></p>	<p>WATER MAIN CLEANING AND LINING PROJECT JESSUP WATER MAIN DISTRIBUTION SYSTEM ELECTION DISTRICTS 1&amp;6</p>	<p>DRAWING NO. 2 OF 7 SCALE 1" = 50'</p>	<p>DESIGNED: TAF DRAFTED: REC CHECKED: TAF</p>
--	---	--	--------------------	--	--	--

**BENCH MARKS**

P&J B.M.-12 ELEV. 195.80  
 GFE Pole # 1G5429 West  
 side of Dorsey Run Road  
 at Sharewood Drive.

P&J B.M.-14 ELEV. 222.039  
 2 R. spike in GFE pole  
 # 101926.



CONTRACT NO. 792-W  
 CAPITAL PROJECT NO. W-4-8024  
 WATER MAIN CLEANING AND LINING PROJECT  
 JESSUP WATER MAIN DISTRIBUTION SYSTEM  
 HOWARD COUNTY, MARYLAND

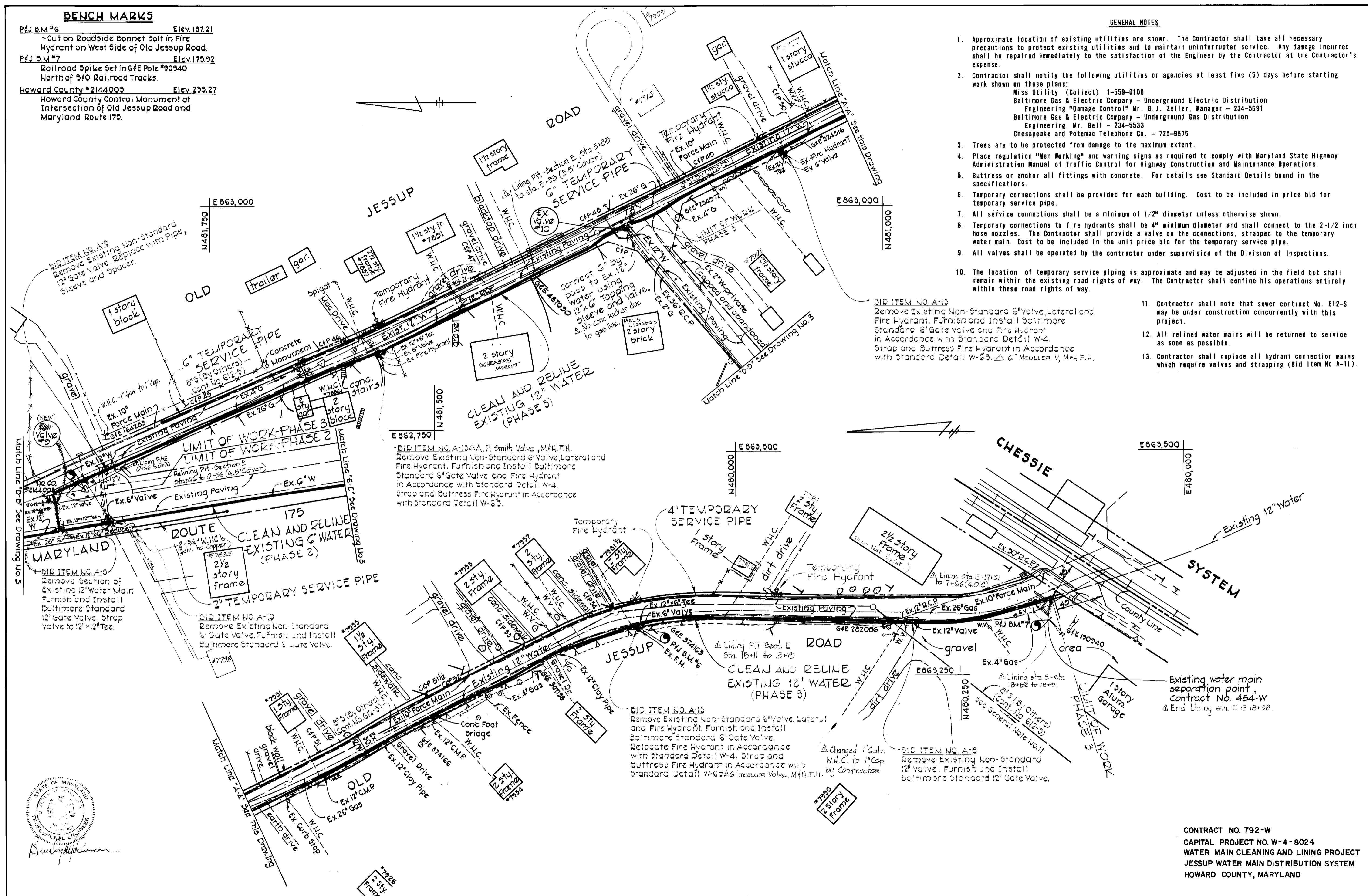
PURDUM & JESCHKE ENGINEERS 1023 N. CALVERT ST. BALTIMORE, MARYLAND	DEPARTMENT OF PUBLIC WORKS HOWARD COUNTY, MARYLAND R. E. Sreudenberger 6/28/78 DIRECTOR OF PUBLIC WORKS DATE	CONTRACT NO. 792-W CAPITAL PROJECT W-4-8024	PLAN	WATER MAIN CLEANING AND LINING PROJECT JESSUP WATER MAIN DISTRIBUTION SYSTEM ELECTION DISTRICTS 1 & 6	DRAWING NO. 3 OF 7	SCALE 1" = 50' DESIGN: RDB DRAFTED: ARZ CHECKED: TAF
---	---	--	------	---	--------------------	---

**BENCH MARKS**

PfJ B.M.#6 Elev. 187.21  
 + Cut on Roadside Bonnet Bolt in Fire Hydrant on West Side of Old Jessup Road.  
 PfJ B.M.#7 Elev. 175.22  
 Railroad Spike Set in G/E Pole #90940 North of B/O Railroad Tracks.  
 Howard County #2144003 Elev. 233.27  
 Howard County Control Monument at Intersection of Old Jessup Road and Maryland Route 175.

**GENERAL NOTES**

1. Approximate location of existing utilities are shown. The Contractor shall take all necessary precautions to protect existing utilities and to maintain uninterrupted service. Any damage incurred shall be repaired immediately to the satisfaction of the Engineer by the Contractor at the Contractor's expense.
2. Contractor shall notify the following utilities or agencies at least five (5) days before starting work shown on these plans:  
 Miss Utility (Collect) 1-559-0100  
 Baltimore Gas & Electric Company - Underground Electric Distribution Engineering "Damage Control" Mr. G. J. Zeller, Manager - 234-5691  
 Baltimore Gas & Electric Company - Underground Gas Distribution Engineering, Mr. Bell - 234-5533  
 Chesapeake and Potomac Telephone Co. - 725-9976
3. Trees are to be protected from damage to the maximum extent.
4. Place regulation "Men Working" and warning signs as required to comply with Maryland State Highway Administration Manual of Traffic Control for Highway Construction and Maintenance Operations.
5. Buttress or anchor all fittings with concrete. For details see Standard Details bound in the specifications.
6. Temporary connections shall be provided for each building. Cost to be included in price bid for temporary service pipe.
7. All service connections shall be a minimum of 1/2" diameter unless otherwise shown.
8. Temporary connections to fire hydrants shall be 4" minimum diameter and shall connect to the 2-1/2 inch hose nozzles. The Contractor shall provide a valve on the connections, strapped to the temporary water main. Cost to be included in the unit price bid for the temporary service pipe.
9. All valves shall be operated by the contractor under supervision of the Division of Inspections.
10. The location of temporary service piping is approximate and may be adjusted in the field but shall remain within the existing road rights of way. The Contractor shall confine his operations entirely within these road rights of way.
11. Contractor shall note that sewer contract No. 612-S may be under construction concurrently with this project.
12. All relined water mains will be returned to service as soon as possible.
13. Contractor shall replace all hydrant connection mains which require valves and strapping (Bid Item No. A-11).



BID ITEM NO. A-8  
 Remove section of Existing 12" Water Main. Furnish and Install Baltimore Standard 12" Gate Valve. Strap Valve to 12" x 12" Tee.

BID ITEM NO. A-10  
 Remove Existing Non-Standard 6" Gate Valve. Furnish and Install Baltimore Standard 6" Gate Valve.

BID ITEM NO. A-13  
 Remove Existing Non-Standard 6" Valve, Lateral and Fire Hydrant. Furnish and Install Baltimore Standard 6" Gate Valve and Fire Hydrant in Accordance with Standard Detail W-4. Strap and Buttress Fire Hydrant in Accordance with Standard Detail W-6B.

BID ITEM NO. A-13  
 Remove Existing Non-Standard 6" Valve, Lateral and Fire Hydrant. Furnish and Install Baltimore Standard 6" Gate Valve. Relocate Fire Hydrant in Accordance with Standard Detail W-4. Strap and Buttress Fire Hydrant in Accordance with Standard Detail W-6B.

BID ITEM NO. A-8  
 Remove Existing Non-Standard 12" Valve. Furnish and Install Baltimore Standard 12" Gate Valve.

Existing water main separation point, Contract No. 454-W  
 End Lining sta. E @ 18+98.

CONTRACT NO. 792-W  
 CAPITAL PROJECT NO. W-4-8024  
 WATER MAIN CLEANING AND LINING PROJECT  
 JESSUP WATER MAIN DISTRIBUTION SYSTEM  
 HOWARD COUNTY, MARYLAND

PURDUM & JESCHKE  
 ENGINEERS  
 1023 N. CALVERT ST.  
 BALTIMORE, MARYLAND

DEPARTMENT OF PUBLIC WORKS  
 HOWARD COUNTY, MARYLAND  
 R.E. Frenkelman 6/28/78 W.D. Sillert 6-28-78  
 DIRECTOR OF PUBLIC WORKS DATE CHIEF-BUREAU OF ENGINEERING DATE

CONTRACT NO. 792-W  
 CAPITAL PROJECT W-4-8024

PLAN

WATER MAIN CLEANING AND LINING PROJECT  
 JESSUP WATER MAIN DISTRIBUTION SYSTEM  
 ELECTION DISTRICTS 1 & 6

DRAWING NO. 4 OF 7  
 SCALE 1" = 50'  
 DESIGN: RDB  
 DRAFTED: ARZ  
 CHECKED: TAF

WS 792-W/4

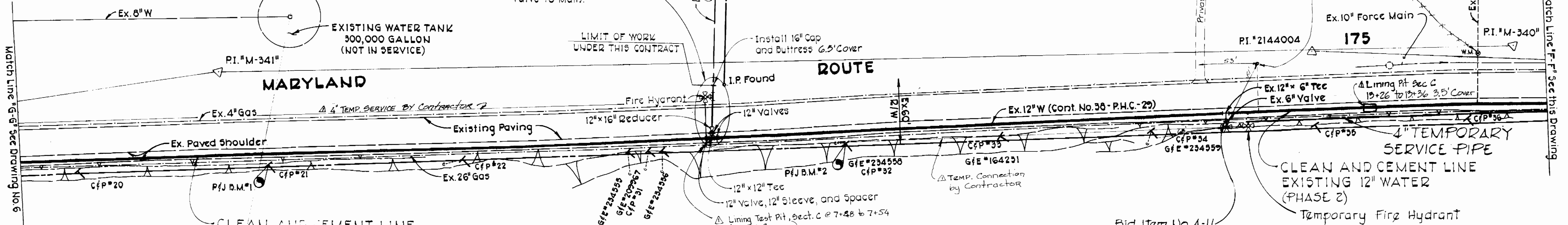
N484,000  
E862,500

As Built A-16  
12" x 12" Tee @ 0+00  
12" Valve @ 0+08.3  
16" x 12" Reducer @ 0+10  
24" Steel Casing Pipe from 0+05 to 0+23  
Vert. Bands, 45° V.B. @ 0+44, 22 1/2° V.B. @ 0+49  
16" Cap @ 0+51  
BID ITEM NO. A-16  
LUMP SUM  
Furnish and Install 16" Water Main,  
12" x 12" Tee, Three (3) 12" Valves,  
16" x 12" Reducer, 16" x 6" Tee, 6" Valve,  
and Fire Hydrant.  
Strap Fire Hydrant and  
Valve to Main.

Property of  
STATE OF MARYLAND  
PATUXENT INSTITUTION  
409/474

Property of  
STATE OF MARYLAND  
DEPARTMENT OF CORRECTION  
104/384, 221/196, 232/35

\*7735  
2 1/2 Story  
Frame



**BENCH MARKS**

PfJ D.M.#1 Elev. 257.39  
Railroad Spike in C/P Pole #20, 95'±  
West of P.I. #M-341.

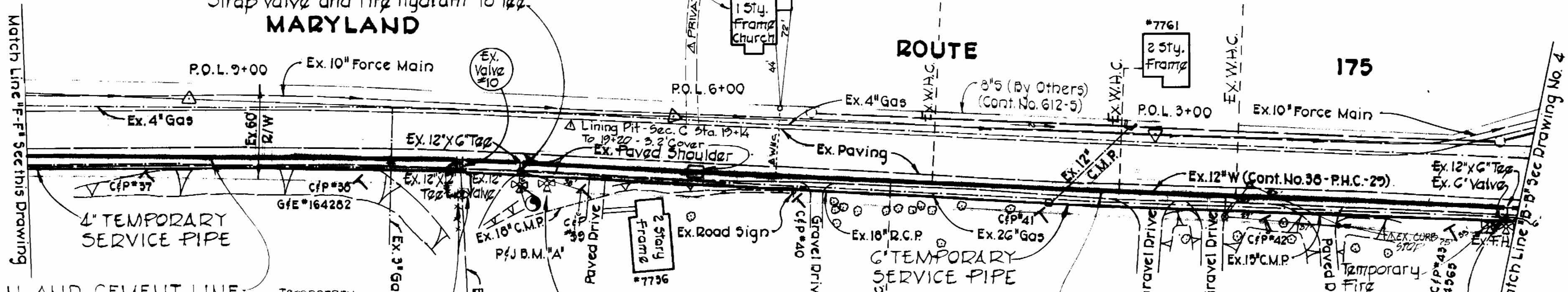
PfJ D.M.#2 Elev. 265.64  
Railroad Spike in C/P Pole #32, 570'±  
South of P.I. #M-341.

PfJ D.M.#A Elev. 253.07  
+ Cut on Road Side Bonnet Bolt of  
Fire Hydrant along Maryland Route 175,  
920'± South of P.I. #2144004.

CLEAN AND CEMENT LINE  
EXISTING 12" WATER  
(PHASE 2)

Bid Item No. A-11  
Remove existing non-standard  
G" valve. furnish and install  
Baltimore Standard G" gate  
valve. Strap valve and  
fire hydrant to tee.  
G" MUELLER F.H. VALVE

Bid Item No. A-11 G" MUELLER F.H. VALVE  
Remove existing non-standard  
G" valve. furnish and install  
Baltimore Standard G" gate valve.  
Strap valve and fire hydrant to tee.



CLEAN AND CEMENT LINE  
EXISTING 12" WATER  
(PHASE 2)

CLEAN AND CEMENT LINE  
EXISTING 12" WATER  
(PHASE 2)

Bid Item No. A-11  
Remove existing non-standard  
G" valve. furnish and install  
Baltimore Standard G" gate  
valve. Strap valve and fire  
hydrant to tee. G" MUELLER F.H. (4' Cover)



PURDUM & JESCHKE  
ENGINEERS  
1023 N. CALVERT ST.  
BALTIMORE, MARYLAND

DEPARTMENT OF PUBLIC WORKS  
HOWARD COUNTY, MARYLAND  
R.E. Frenkelman 6/28/78  
DIRECTOR OF PUBLIC WORKS DATE  
W.O. Tolbot 6-28-78  
CHIEF-BUREAU OF ENGINEERING DATE

CONTRACT NO. 792-W  
CAPITAL PROJECT W-4-8024

PLAN

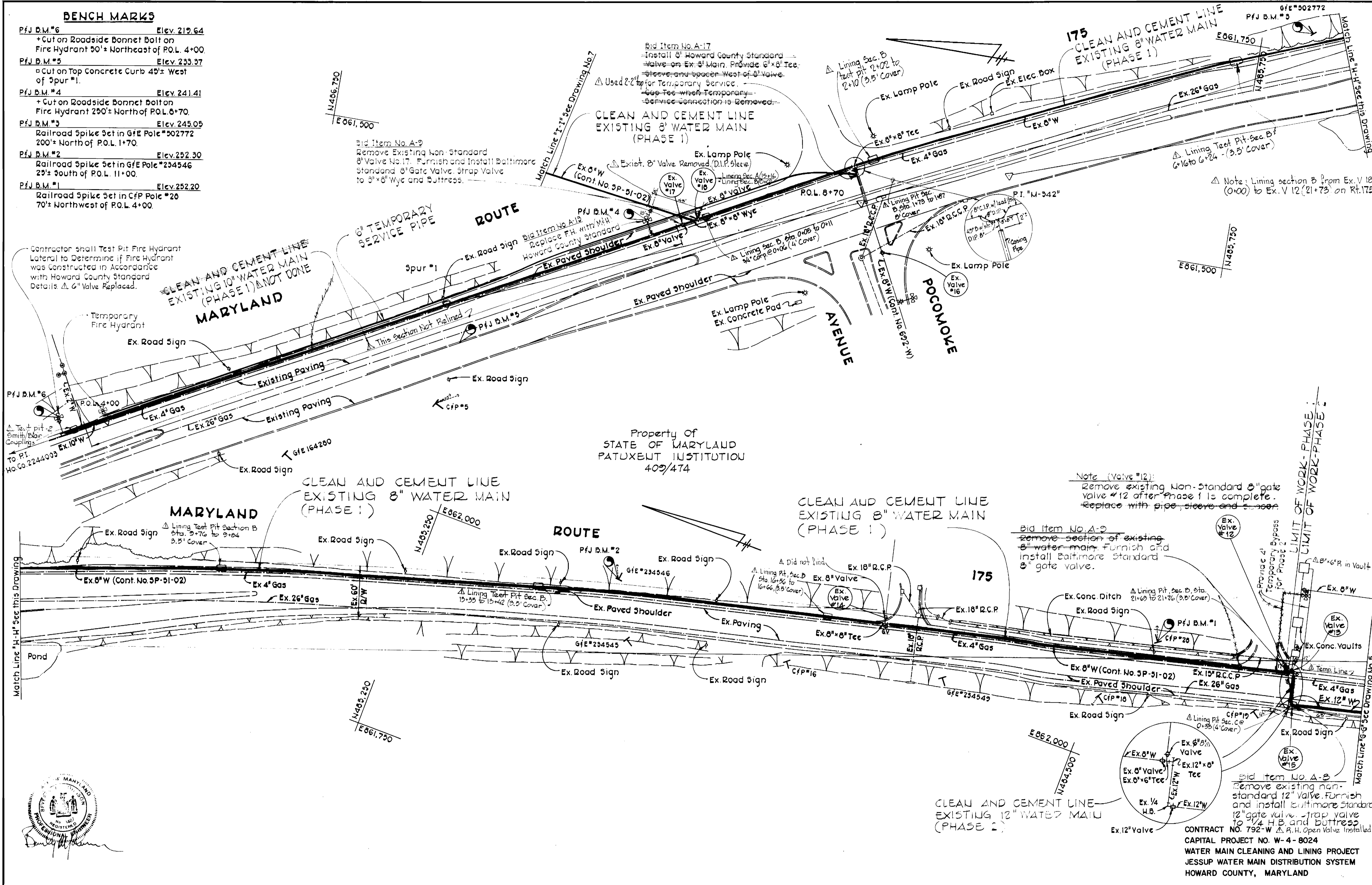
WATER MAIN CLEANING AND LINING PROJECT  
JESSUP WATER MAIN DISTRIBUTION SYSTEM  
ELECTION DISTRICTS 1 & 6

DRAWING NO. 5 OF 7  
SCALE 1" = 50'

Designed-TAF  
Drafted-ARZ  
Checked-TAF

**BENCH MARKS**

- PfJ B.M.\*6 Elev. 219.64  
+ Cut on Roadside Bonnet Bolt on Fire Hydrant 50'± Northeast of P.O.L. 4+00.
- PfJ B.M.\*5 Elev. 233.37  
+ Cut on Top Concrete Curb 45'± West of Spur #1.
- PfJ B.M.\*4 Elev. 241.41  
+ Cut on Roadside Bonnet Bolt on Fire Hydrant 250'± North of P.O.L. 8+70.
- PfJ B.M.\*3 Elev. 245.05  
Railroad Spike Set in GFE Pole #302772 200'± North of P.O.L. 1+70.
- PfJ B.M.\*2 Elev. 252.30  
Railroad Spike Set in GFE Pole #234546 25'± South of P.O.L. 11+00.
- PfJ B.M.\*1 Elev. 252.20  
Railroad Spike Set in CFP Pole #20 70'± Northwest of P.O.L. 4+00.



Bid Item No. A-9  
Remove Existing Non-Standard 8" Valve No. 17. Furnish and Install Baltimore Standard 8" Gate Valve, Strap Valve to 3" x 8" Wye and Buttress.

Bid Item No. A-17  
Install 8" Howard County Standard Valve on Ex. 8" Main. Provide 6" x 8" Tee, Sleeve and spacer West of 8" Valve. Used 2" Tee for Temporary Service. Tee with Temporary Service Connection is Removed.

Note (Valve #12):  
Remove existing Non-Standard 8" gate valve #12 after Phase 1 is complete. Replace with pipe, sleeve and spacer.

Bid Item No. A-9  
Remove section of existing 8" water main. Furnish and install Baltimore Standard 8" gate valve.

Bid Item No. A-9  
Remove existing non-standard 12" Valve. Furnish and install Baltimore Standard 12" gate valve, strap valve to 1/4" H.B. and buttress to 1/4" H.B. Open Valve Installed.

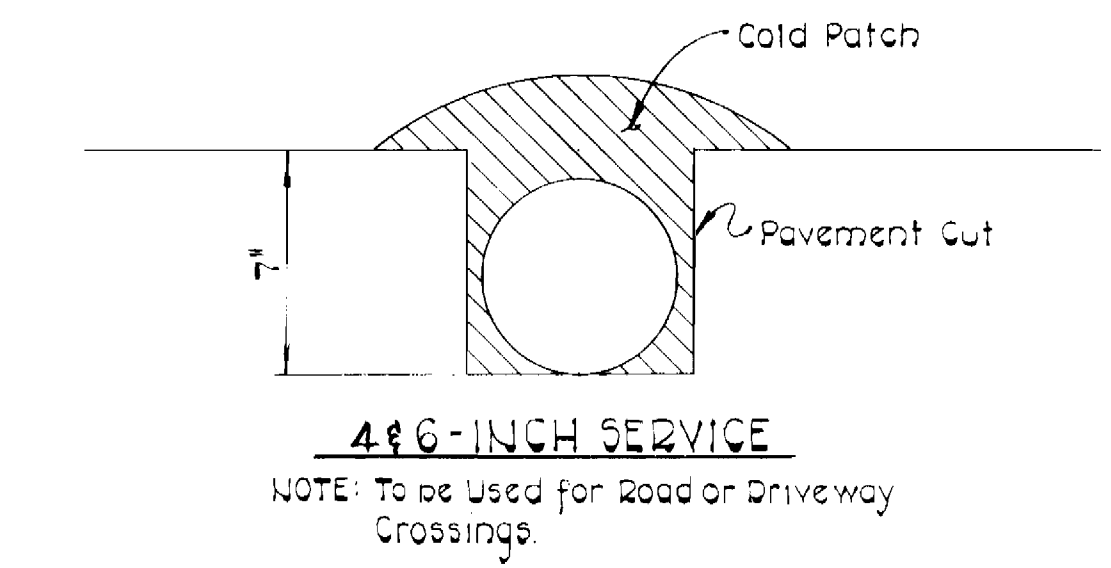
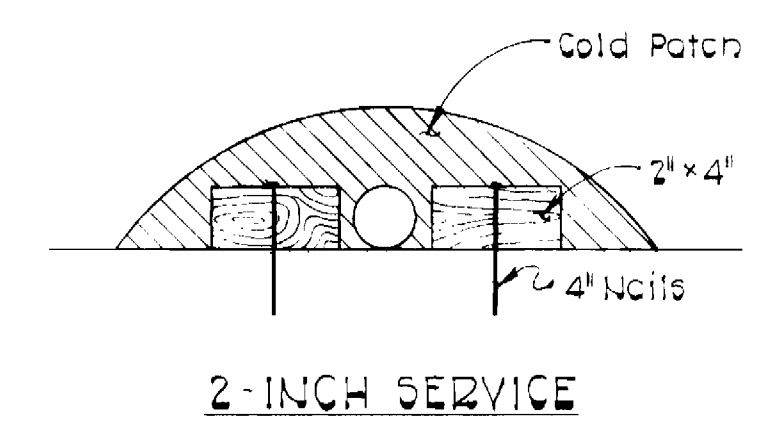
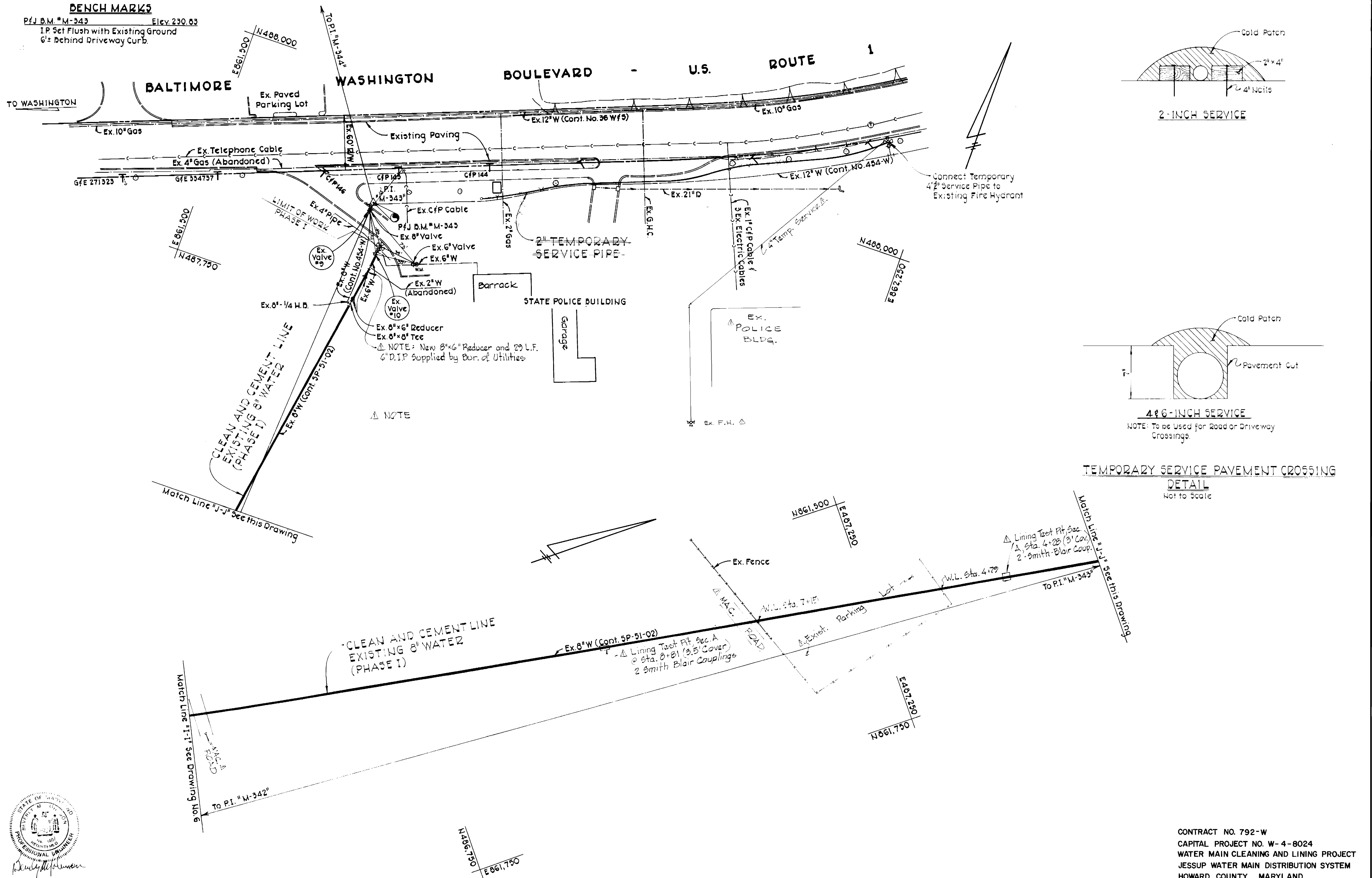
CONTRACT NO. 792-W  
CAPITAL PROJECT NO. W-4-8024  
WATER MAIN CLEANING AND LINING PROJECT  
JESSUP WATER MAIN DISTRIBUTION SYSTEM  
HOWARD COUNTY, MARYLAND



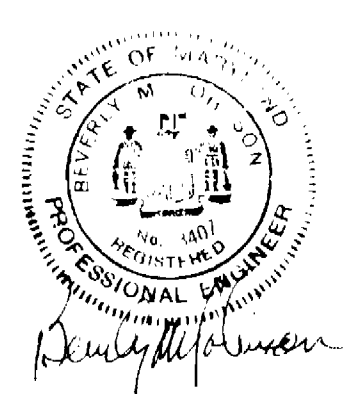
PURDUM & JESCHKE ENGINEERS 1023 N. CALVERT ST. BALTIMORE, MARYLAND	DEPARTMENT OF PUBLIC WORKS HOWARD COUNTY, MARYLAND R.E. Freudenberger 6/28/78 DIRECTOR OF PUBLIC WORKS DATE	CONTRACT NO. 792-W CAPITAL PROJECT W-4-8024	PLAN	WATER MAIN CLEANING AND LINING PROJECT JESSUP WATER MAIN DISTRIBUTION SYSTEM ELECTION DISTRICTS 1 & 6	DRAWING NO. 6	SCALE 1" = 50'	DESIGNED: TAF
					OF 7		DRAFTED: ARZ CHECKED: TAF

**BENCH MARKS**

PfJ B.M. \*M-343 Elev. 230.63  
 I.P. Set Flush with Existing Ground  
 6" Behind Driveway Curb.



**TEMPORARY SERVICE PAVEMENT CROSSING**  
**DETAIL**  
 Not to Scale



**PURDUM & JESCHKE**  
 ENGINEERS  
 1023 N. CALVERT ST.  
 BALTIMORE, MARYLAND

**DEPARTMENT OF PUBLIC WORKS**  
 HOWARD COUNTY, MARYLAND  
*R. E. Freudenberger* 6/28/78 *W. O. Fallick* 6-28-78  
 DIRECTOR OF PUBLIC WORKS DATE CHIEF BUREAU OF ENGINEERING DATE

CONTRACT NO. 792-W  
 CAPITAL PROJECT W-4-8024

**PLAN**

**WATER MAIN CLEANING AND LINING PROJECT**  
**JESSUP WATER MAIN DISTRIBUTION SYSTEM**  
 ELECTION DISTRICTS 1 & 6

**DRAWING** NO. 7 OF 7  
**SCALE** 1" = 50'

DESIGNED: TAF  
 DRAFTED: ARZ  
 CHECKED: TAF