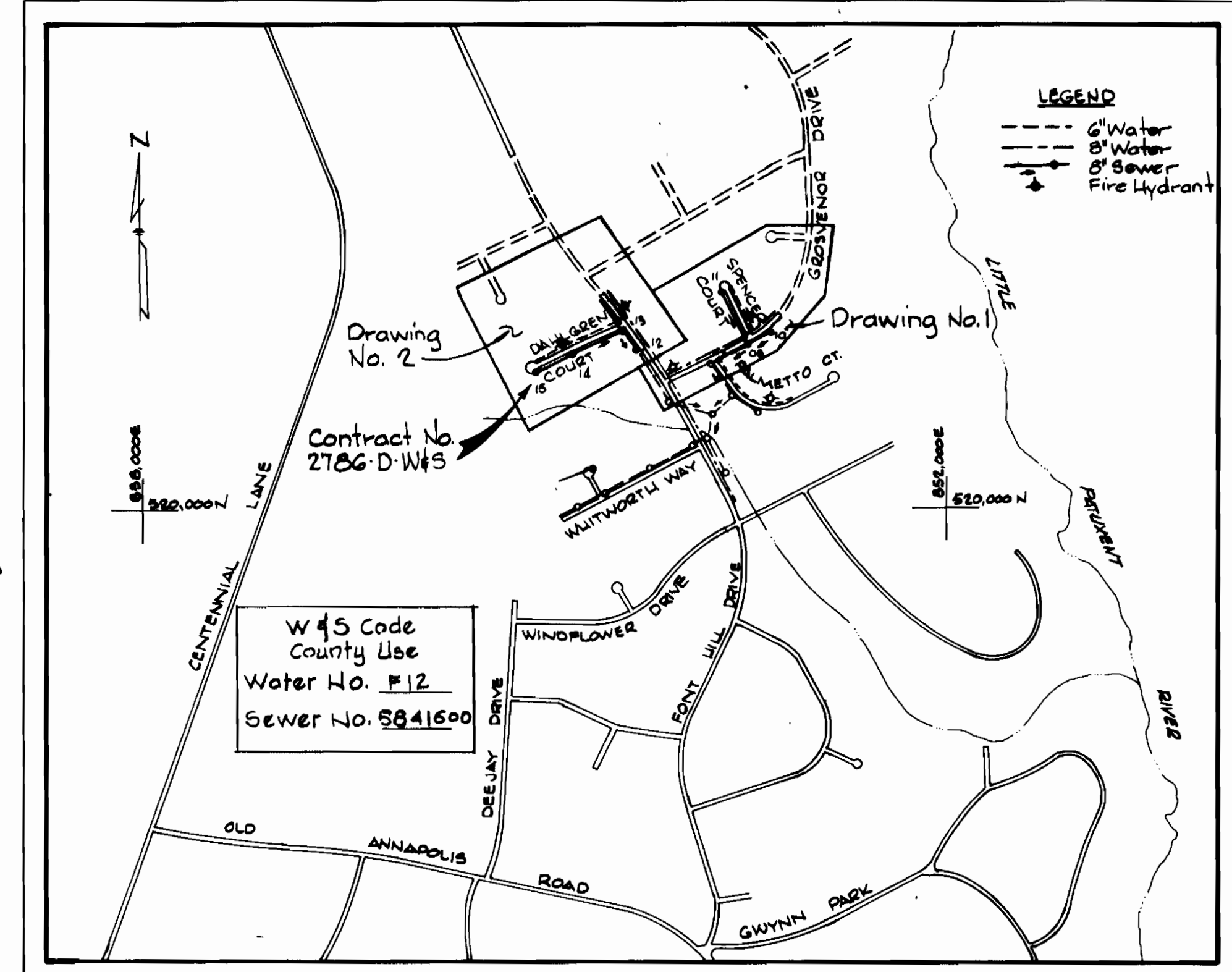
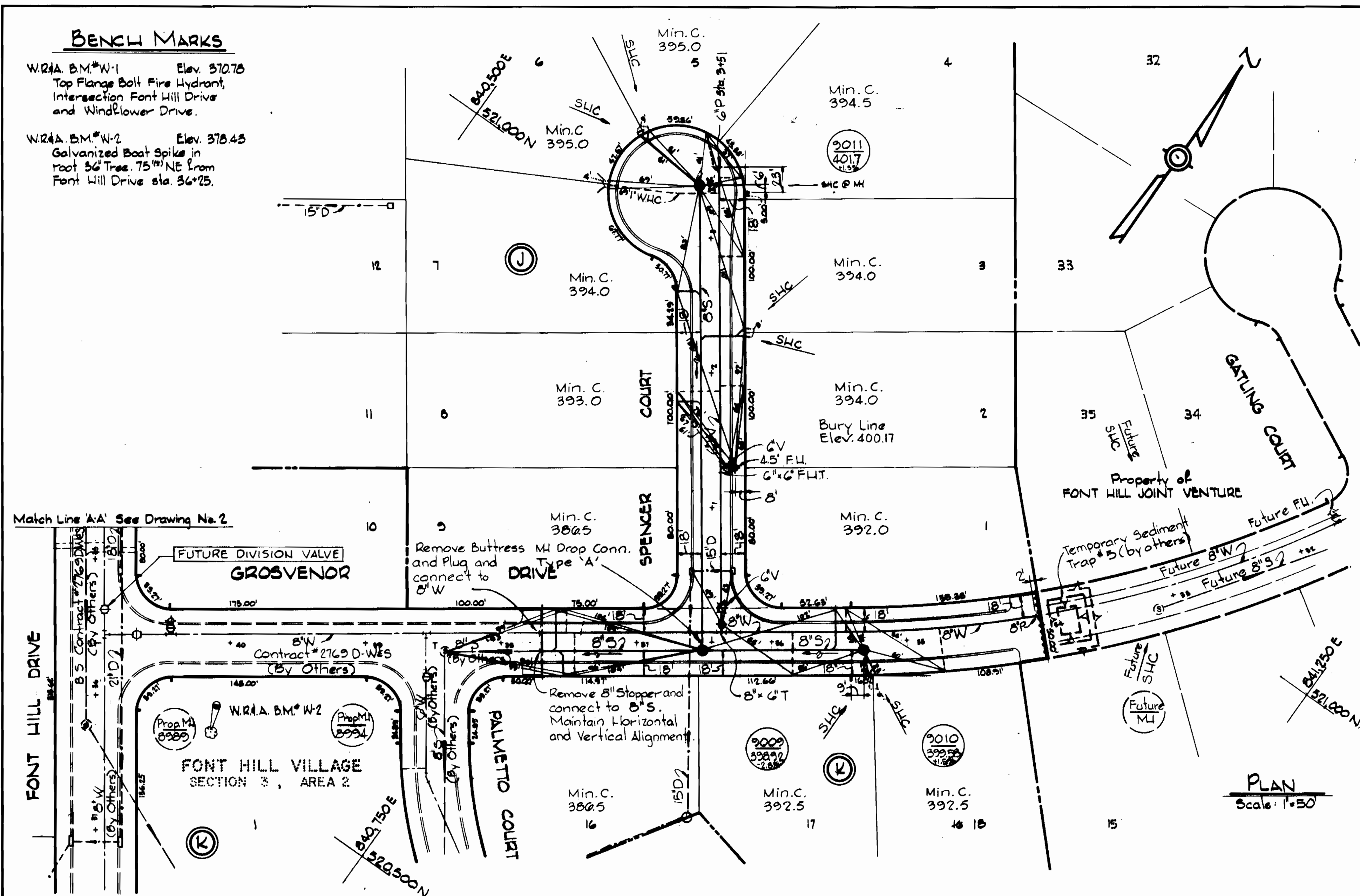


BENCH MARKS

W.R.A. B.M. #W-1 Elev. 370.76
Top Flange Bolt Fire Hydrant,
Intersection Font Hill Drive
and Windflower Drive.

W.R.A. B.M. #W-2 Elev. 378.48
Galvanized Boat Spike in
root 36 Tree, 75' NE from
Font Hill Drive sta. 36+25.

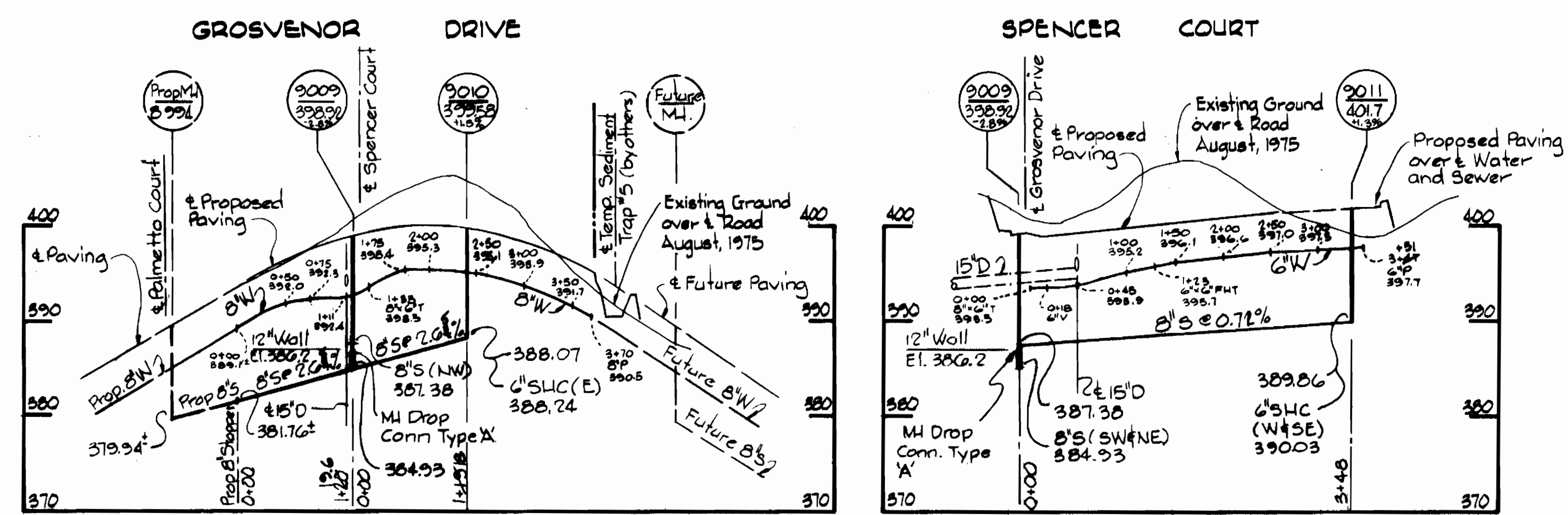


LOCATION MAP
Scale: 1"=600'

GENERAL NOTES

- Approximate location of existing mains are shown. The contractor shall take all necessary precautions to protect existing mains and services and maintain uninterrupted supply. Any damage incurred shall be repaired immediately.
- All pipe elevations shown are invert elevations.
- The contractor shall locate existing utilities a minimum of two weeks in advance of construction operations in vicinity of utilities.
- The contractor shall notify the following utilities or agencies at least five days before starting work shown on these plans:
Baltimore Gas and Electric Company - Underground Electric Distribution Engineering 234-5691
"Damage Control" 234-5691
"Underground Gas Distribution Engineering" 234-5691.
Chesapeake and Potomac Telephone Company 393-3648.
Miss Utility 1-555-0100
- For all standard details see standards bound in Specifications.
- All horizontal and vertical controls are based on Maryland State Datum.
- Clear all utilities by a minimum of 6'.
- Block all fittings with concrete, see standards bound in Specifications.
- All water mains shall have a minimum of 3 1/2' cover.
- All water mains shall be C.I.P., D.I.P. or A.C.P. unless otherwise noted.
- All valves shall be strapped to trees where applicable in accordance with the standard details.
- All fire hydrants shall be strapped and buttressed in accordance with the standard details. Soil ground the hydrants shall be compacted in accordance with Section 5-1B of the standard specifications.
- Payment for strapping fire hydrants and valves will be included in unit price bid for furnishing and laying water mains.
- Bury Line elevations on fire hydrants shall be set to the elevation shown on the drawings.
- All W.H.C.'s shall be 1/2" diameter unless otherwise noted.
- Water services shall be for inside meter settings.
- All sewer mains shall be C.S.P.X., V.C.P.X. or A.C.P. Class 2400 unless otherwise noted.
- All manholes shall be 4'-0" inside diameter.
- The contractor shall provide a joint in all sewer mains within 2'-0" of exterior manhole walls.
- Manholes shown with 12" Walls are for brick manholes only.

PLAN
Scale: 1"=50'



PROFILES
Scale: Horizontal = 1"=100'
Vertical = 1"=10'

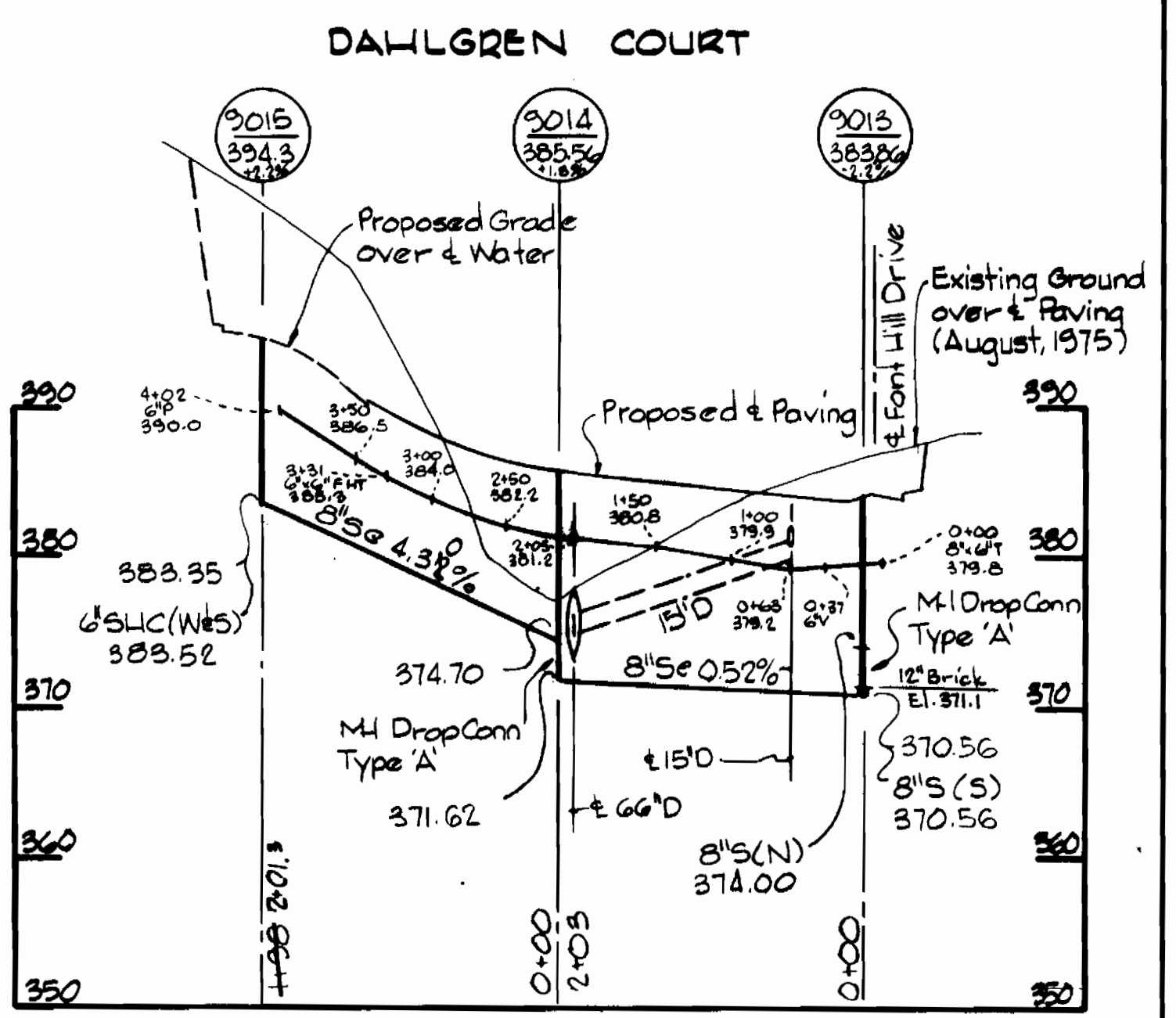
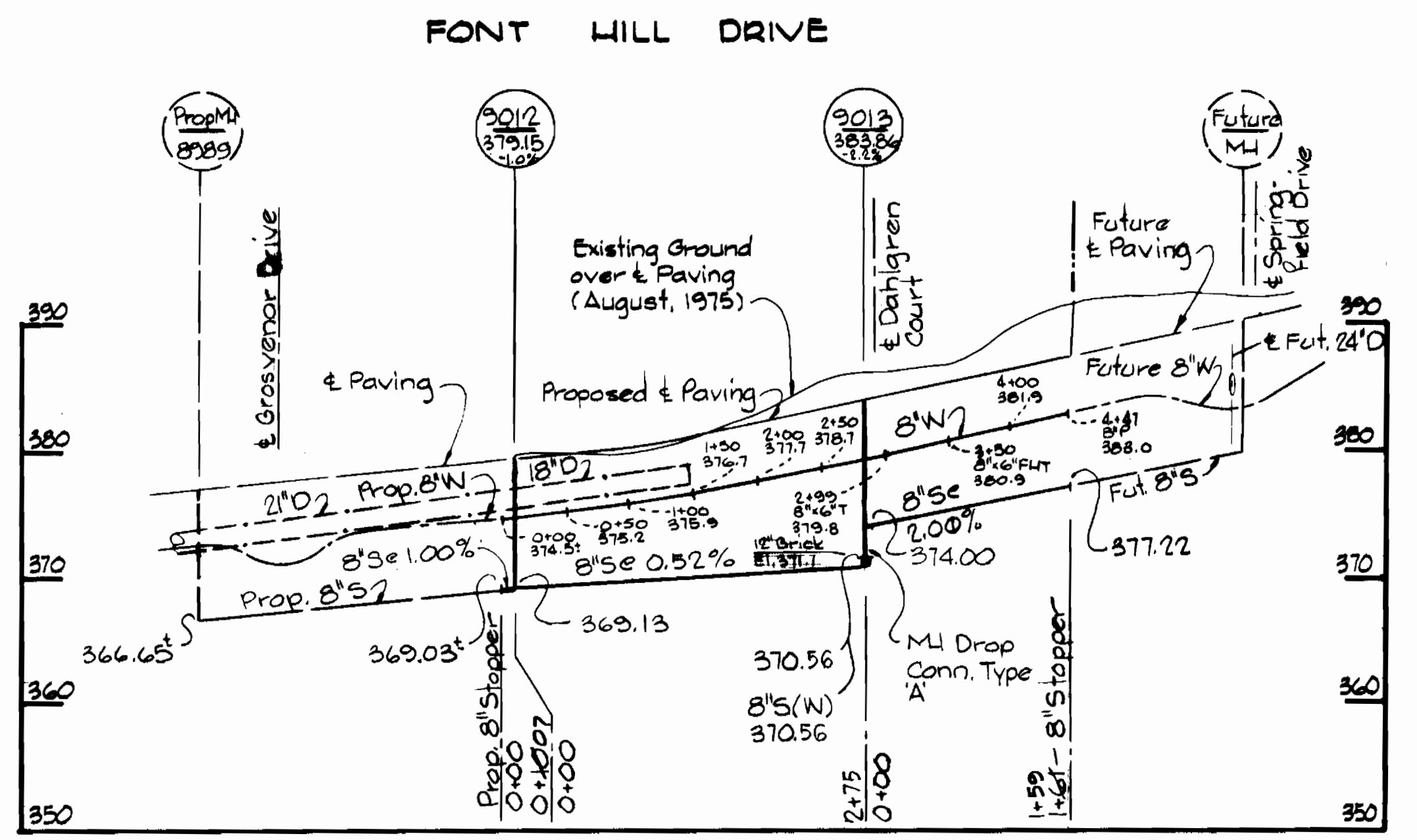
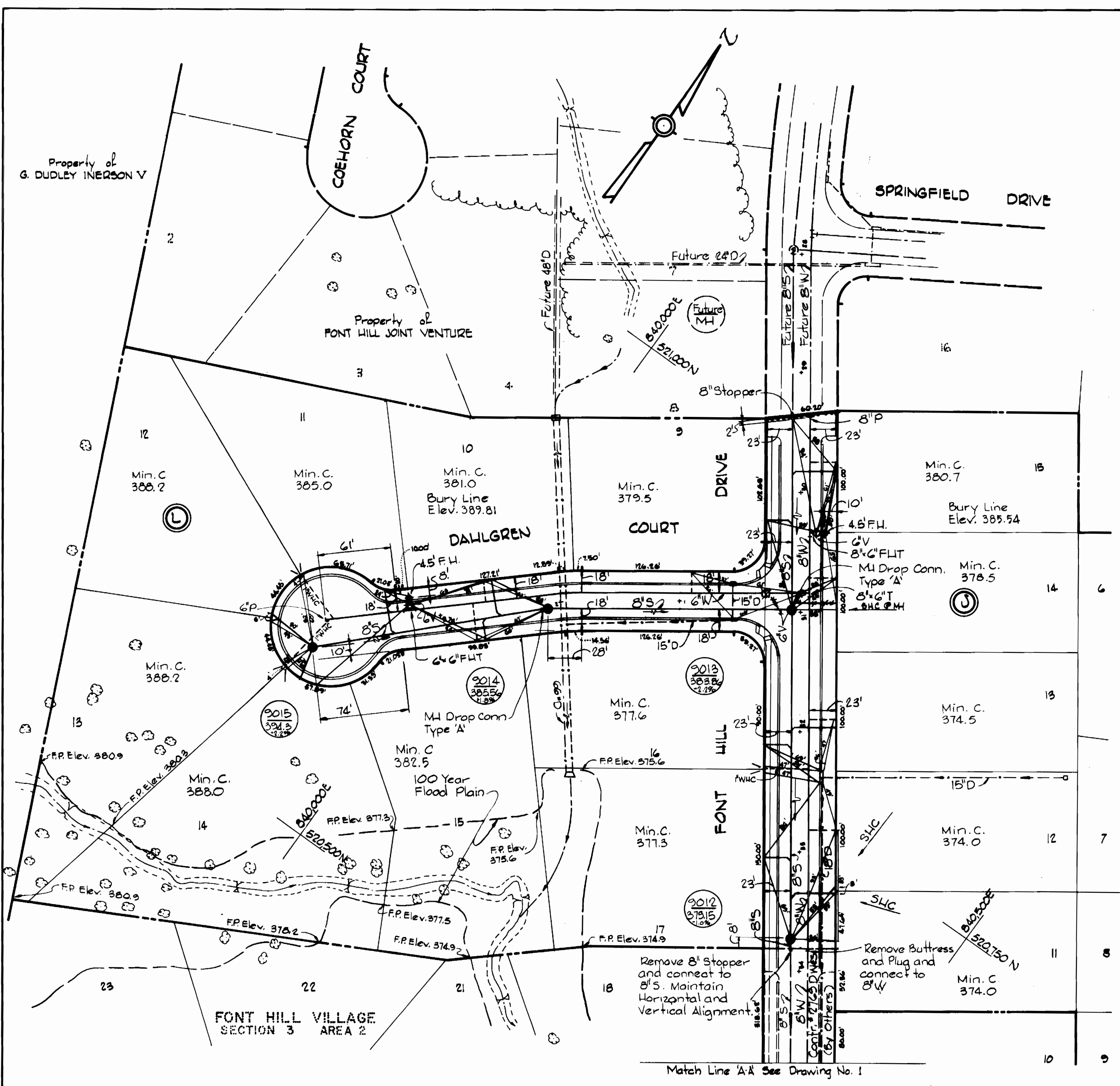
ITEM	BID	AS-BUILT	MATERIAL/SUPPLIER
8" Sewer	1,450 LF	1,577 LF	A.C.P./Delair Rd. Supply Co. Johns-Manville
Manholes	80 V.F.	807 LF	Atlantic Precast
8" Water	820 LF	816 LF	D.I.P. U.S. Pipe
6" Water	780 LF	787 LF	D.I.P. U.S. Pipe
Fire Hydrants	3	3	U.S. Pipe



Kenneth M. Lind

Font Hill Village
Section 3 Area 3
Contract No. 2786-D-W-3

WHITMAN, REQUARDT & ASSOCIATES ENGINEERS 1304 ST. PAUL ST. BALTIMORE, MARYLAND	DEPARTMENT OF PUBLIC WORKS HOWARD COUNTY, MARYLAND <i>Rubert E. Srunderburg 7/17/78</i> DIRECTOR OF PUBLIC WORKS - DATE	CONTRACT NO. 2786-D-W-3 <i>W.O. 7047-2</i> CHIEF-BUREAU OF ENGINEERING - DATE	PLAN AND PROFILES OF WATER AND SEWER MAINS	ELECTION DISTRICT ELLICOTT CITY NO. 2	DRAWING NO. 1 OF 2	SCALE AS SHOWN
					JUNE - 26, 1978 AS BUILT: 5-14-81 mw	



PROFILES
 Scale: Horizontal 1"=100'
 Vertical 1"=10'

PLAN
 Scale: 1"=50'



Kenneth M. Lind

Font Hill Village
 Section 3 Area 3
 Contract No. 2186 D.W.45

WHITMAN, REQUARDT & ASSOCIATES
 ENGINEERS
 1304 ST. PAUL ST.
 BALTIMORE, MARYLAND

DEPARTMENT OF PUBLIC WORKS
 HOWARD COUNTY, MARYLAND
Richard E. Schneiderberg 7/17/78
 DIRECTOR OF PUBLIC WORKS - DATE

CONTRACT NO. 2186-D.W.45

**PLAN AND PROFILES OF
 WATER AND SEWER MAINS**

**ELECTION DISTRICT
 ELLICOTT CITY NO.2**

**DRAWING NO. 2
 OF 2** **SCALE AS SHOWN**