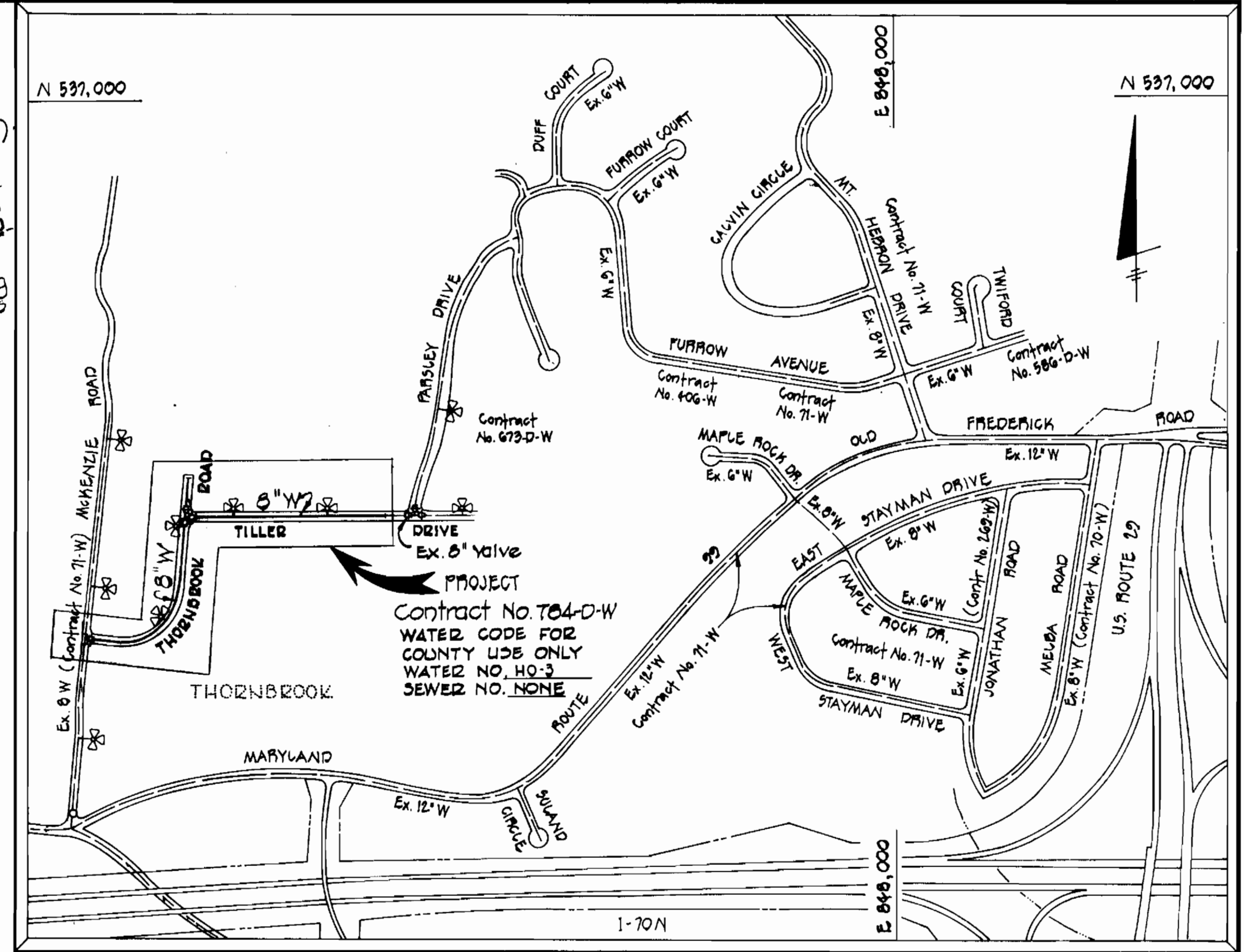
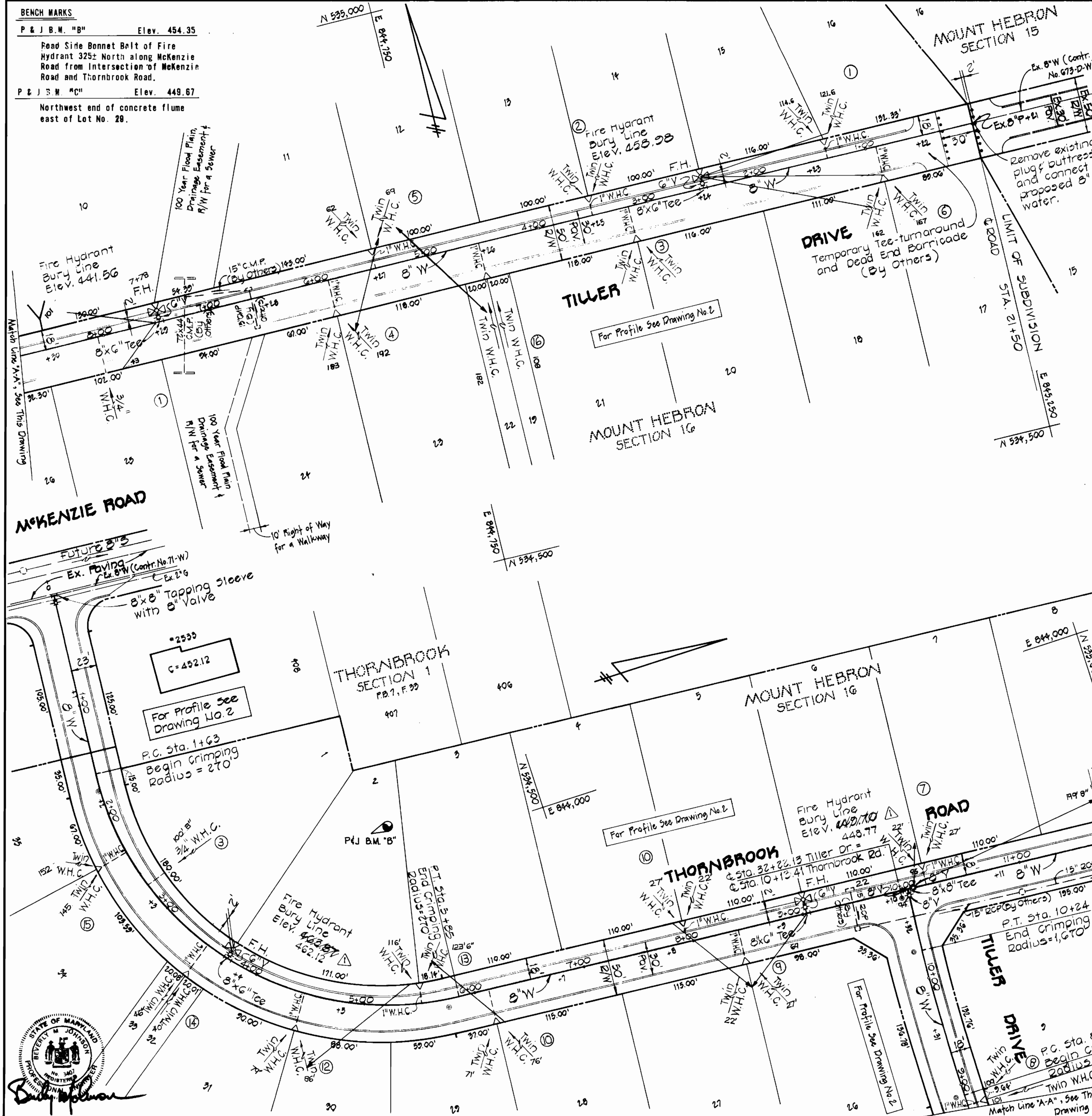


**BENCH MARKS**  
 P & J B.M. "B" Elev. 454.35  
 Road Side Bonnet Belt of Fire Hydrant 325: North along McKenzie Road from Intersection of McKenzie Road and Thornbrook Road.  
 P & J B.M. "C" Elev. 449.67  
 Northwest end of concrete flume east of Lot No. 28.



**VICINITY MAP**

Scale: 1" = 600'

**GENERAL NOTES**

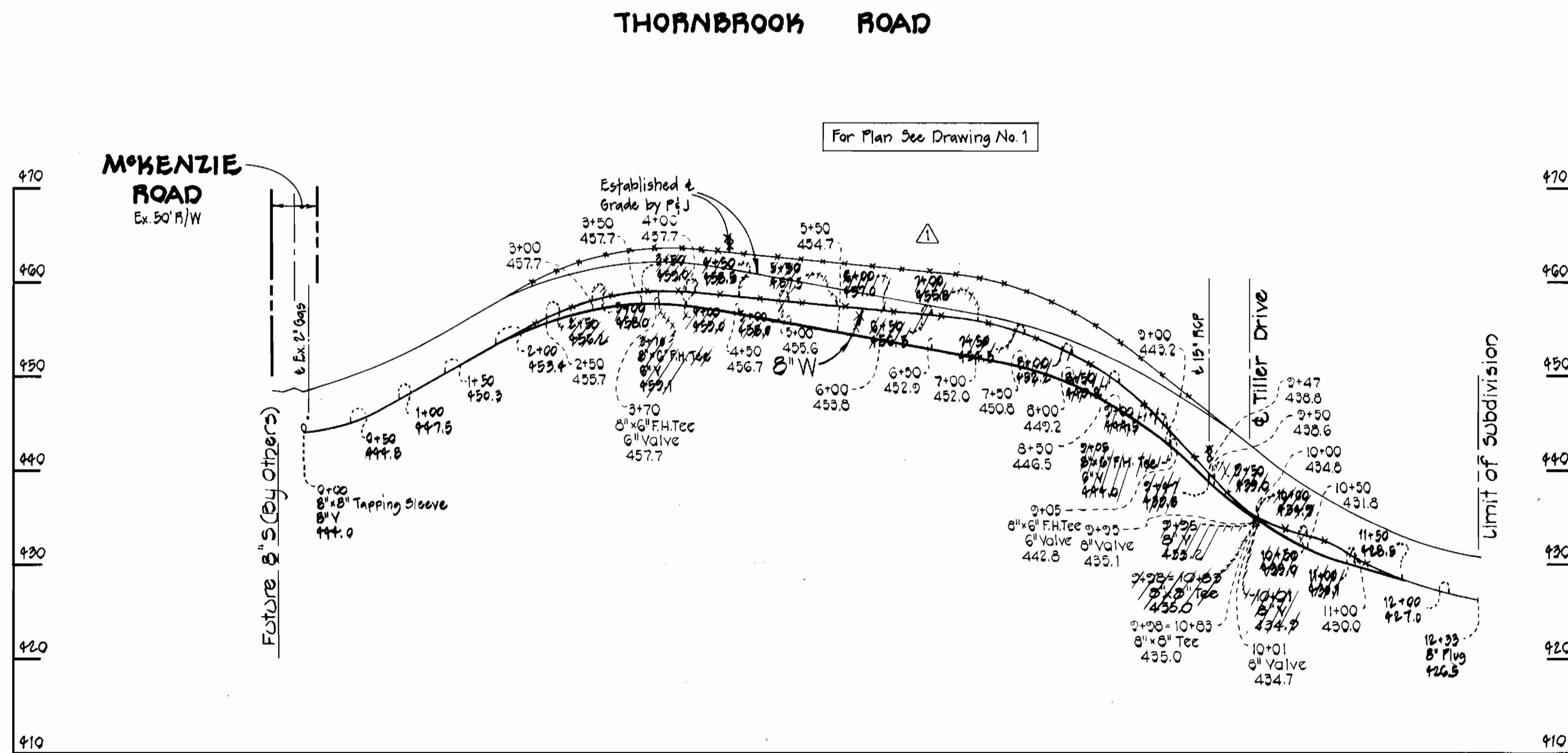
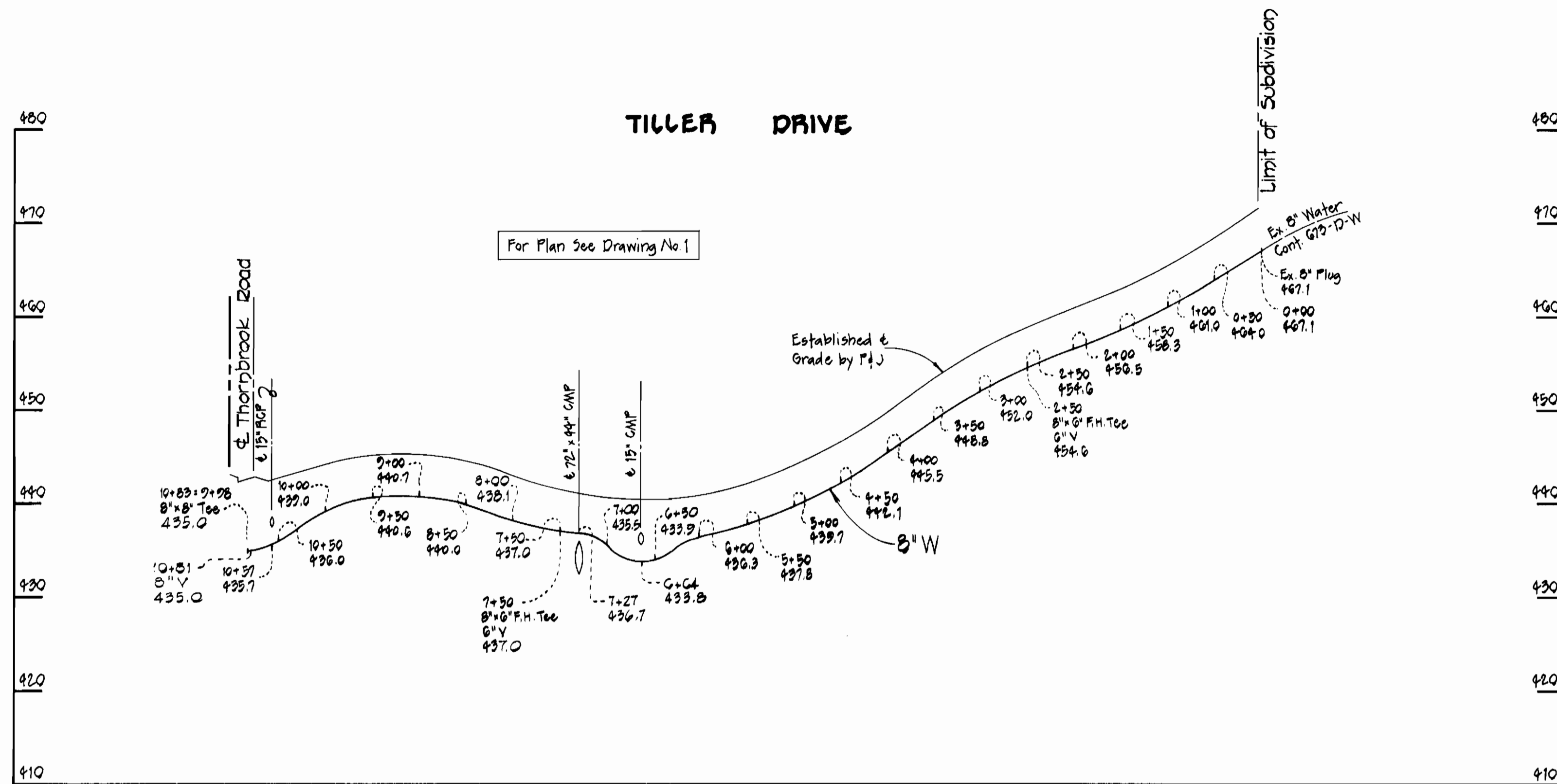
- Approximate locations of existing mains are shown. The Contractor shall take all necessary precautions to protect existing mains and services and maintain uninterrupted supply. Any damage incurred shall be repaired immediately.
- All pipe elevations shown are invert elevations.
- Clear all utilities by a minimum of 8" vertically. Clear all poles 2'-0" minimum or tunnel as required.
- For standard details see Howard County Standards.
- Contractor shall locate existing utilities in advance of construction operations in the vicinity of proposed utilities.
- Contractor shall notify the following utilities or agencies at least five (5) days before starting work shown on these plans:  
 Baltimore Gas and Electric Company - Underground Electric Distribution Engineering - Damage Control - 234-5881  
 Baltimore Gas and Electric Company - Underground Gas Distribution Engineering - 558-0100  
 Chesapeake and Potomac Telephone Company - 725-8978  
 Miss Utility - 558-0100
- Buttress or anchor all water main fittings with concrete. All valves shall be strapped to tees in accordance with standard details.
- All water mains to have a minimum of 3.5' cover unless otherwise noted.
- All fire hydrants shall be strapped to the tee and shall be buttressed with concrete in accordance with the standard details. Cost of strapping fire hydrants and valves to be included in the unit price bid for furnishing and installing fire hydrants. Soil around the fire hydrant to be compacted in accordance with Section 5-15 of the Howard County Standard Specifications.
- Bury line elevations on fire hydrants shall be set to the elevations shown on the plans.
- Horizontal and vertical control is based on the Maryland State Grid Coordinate System.

REV.	DATE	REVISION	REMARKS
	4/19/78	WATER MAIN	REVISION ALONG THORNBROOK ROAD

QUANTITIES			
Item	Estimated	"As-built"	Supplier
8" W	2315 L.F.	2315	ACP
6" W	40 L.F.	35	"
1" W.H.C.	415 L.F.		
3/4" W.H.C.	135 L.F.		
Fire Hydrants	4 each		

CONTRACT NO. 784-D-W  
 MOUNT HEBRON - SECTION 16  
 WATER MAIN EXTENSION

<b>PURDUM &amp; JESCHKE</b> ENGINEERS 1023 N. CALVERT ST. BALTIMORE, MARYLAND	<b>DEPARTMENT OF PUBLIC WORKS</b> HOWARD COUNTY, MARYLAND DATE: 2-14-78 CHIEF-BUREAU OF ENGINEERING	CONTRACT NO. 784-D-W	<b>PLAN OF WATER MAINS</b>	<b>MOUNT HEBRON - SECTION 16</b> ELECTION DISTRICT NO. 2 HOWARD COUNTY, MARYLAND	DRAWING NO. 1	SCALE 1" = 50'	Designed: RDB Drafted: REC Checked: TAF
					OF 2		



*[Signature]*

REVISION	DATE	REMARKS
△	4/16/78	WATER MAIN REVISION ALONG THORNBROOK ROAD

CONTRACT NO. 784-D-W  
 MOUNT HEBRON - SECTION 16  
 WATER MAIN EXTENSION

PURDUM & JESCHKE ENGINEERS 1023 N. CALVERT ST. BALTIMORE, MARYLAND	DEPARTMENT OF PUBLIC WORKS HOWARD COUNTY, MARYLAND <i>[Signature]</i> 2-14-78 DIRECTOR OF PUBLIC WORKS DATE	CONTRACT NO. 784-D-W <i>[Signature]</i> 2-10-78 CHIEF-BUREAU OF ENGINEERING DATE	PROFILES OF WATER MAINS	MOUNT HEBRON - SECTION 16 ELECTION DISTRICT NO. 2 HOWARD COUNTY, MARYLAND	DRAWING NO. 2 OF 2	SCALE Horiz: 1"=100' Vert: 1"=10'	Designed: RDB Drafted: REC Checked: TAF
					W.O. #5003-60		