

**GENERAL NOTES**

1. All water mains to be C.I.P., D.I.P. or A.C.P. unless otherwise shown.
2. Top of all water mains to have a minimum of 3.5 ft. cover unless otherwise noted.
3. All valves shall be strapped to tees in accordance with standard details.
4. Block all fittings with concrete, see standards bound in specifications.
5. Bury line elevations on fire hydrants shall be set to the elevations shown on the drawings. All fire hydrants shall be strapped and buttressed with concrete in accordance with standard details. Soil around the fire hydrants to be compacted in accordance with Section 5-15 of the Standard Specifications.
6. All sewer mains shall be C.S.P.X., V.C.P.X., or A.C.P. Class 2400 unless otherwise noted.
7. The contractor shall provide a joint in all sewer mains within 2'-0" of exterior manhole wall.
8. All manholes shall be 4'-0" inside diameter, unless otherwise noted.
9. Approximate locations of existing mains are shown. The contractor shall take all necessary precautions to protect existing mains and services and maintain uninterrupted supply. Any damage incurred shall be repaired immediately.
10. All horizontal controls are based on Maryland State Coordinates.
11. All vertical controls are based on U.S.G.S. Datum.
12. All pipe elevations shown are invert elevations.
13. Clear all utilities by a minimum of 6", clear all poles by 2'-0" minimum or tunnel as required.
14. For all standard details see standards bound in specifications.
15. Contractor shall locate existing utilities in advance of construction operations in the vicinity of proposed utilities.
16. Contractor shall notify the following utilities or agencies at least five (5) days before starting work shown on these plans:  
 State Highway Administration - 531-5533  
 Baltimore Gas and Electric Company - Underground Electric Distribution Engineering - "Damage Control" - 234-5631  
 Baltimore Gas and Electric Company - Underground Gas Distribution Engineering - 558-0100  
 Chesapeake and Potomac Telephone Co. - 725-9976  
 American Telephone and Telegraph - Cable Location Division - 301-393-3553  
 Colonial Pipeline Company - 781-4641
17. Trees are to be protected from damage to maximum extent. Trees located within the construction strip are not to be removed or damaged by the contractor.
18. Contractor shall remove trees, stumps and roots along line of excavation as directed by the Engineer. Payment for such removal, shall be included in the unit price bid for excavation and backfill for water and sewer mains.
19. Place regulation "Men Working" and warning signs as required to comply with Maryland State Highway Administration Manual of Traffic Control for Highway Construction and Maintenance Operations.

QUANTITIES				
ITEM	BID	AS-BUILT	MATERIAL	SUPPLIER
6" WATER	1255 LF	1234 LF	Griffin RIP	
8" WATER	590 LF	570 LF	Griffin RIP	
8" SEWER	2125 LF	2096 LF	Johns-Manville, CL2400 ACP	
F.H.'S	4	4	American - Darling	



H. N. Cook  
11-7-77

**CLARK • FINEFROCK & SACKETT**  
ENGINEERS • PLANNERS • SURVEYORS  
11315 LOCKWOOD DRIVE SILVER SPRING, MARYLAND 20904

DEPARTMENT OF PUBLIC WORKS  
HOWARD COUNTY, MARYLAND  
1-25-78  
DATE: 1-25-78  
CHIEF, BUREAU OF ENGINEERING

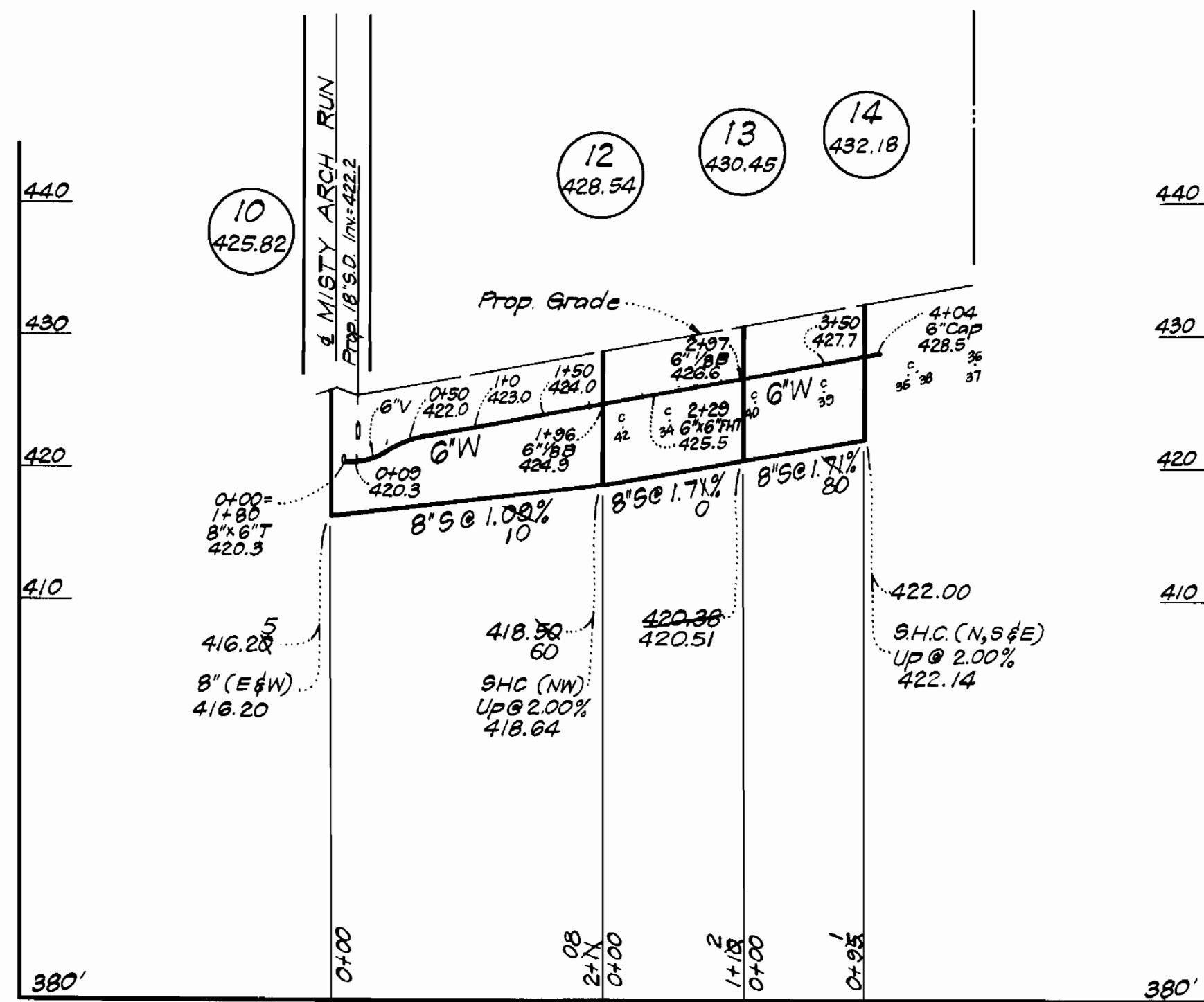
CONTRACT NO. 2780 D WES

PLAN OF  
WATER & SEWER MAINS

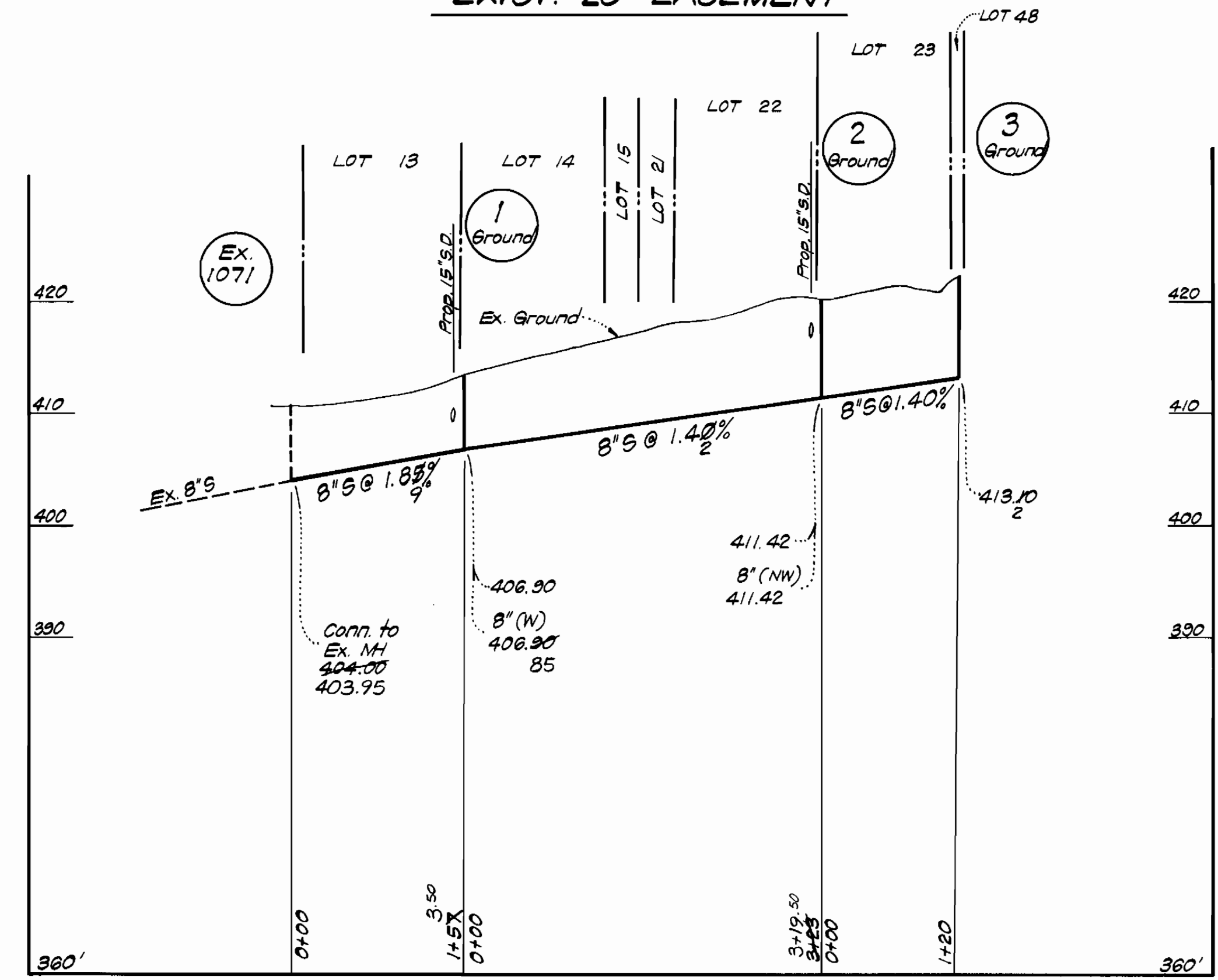
COLUMBIA  
VILLAGE OF HICKORY RIDGE  
ELECTION DISTRICT-CLARKSVILLE No. 5

DRAWING NO. 1 OF 2 SCALE 1" = 50'

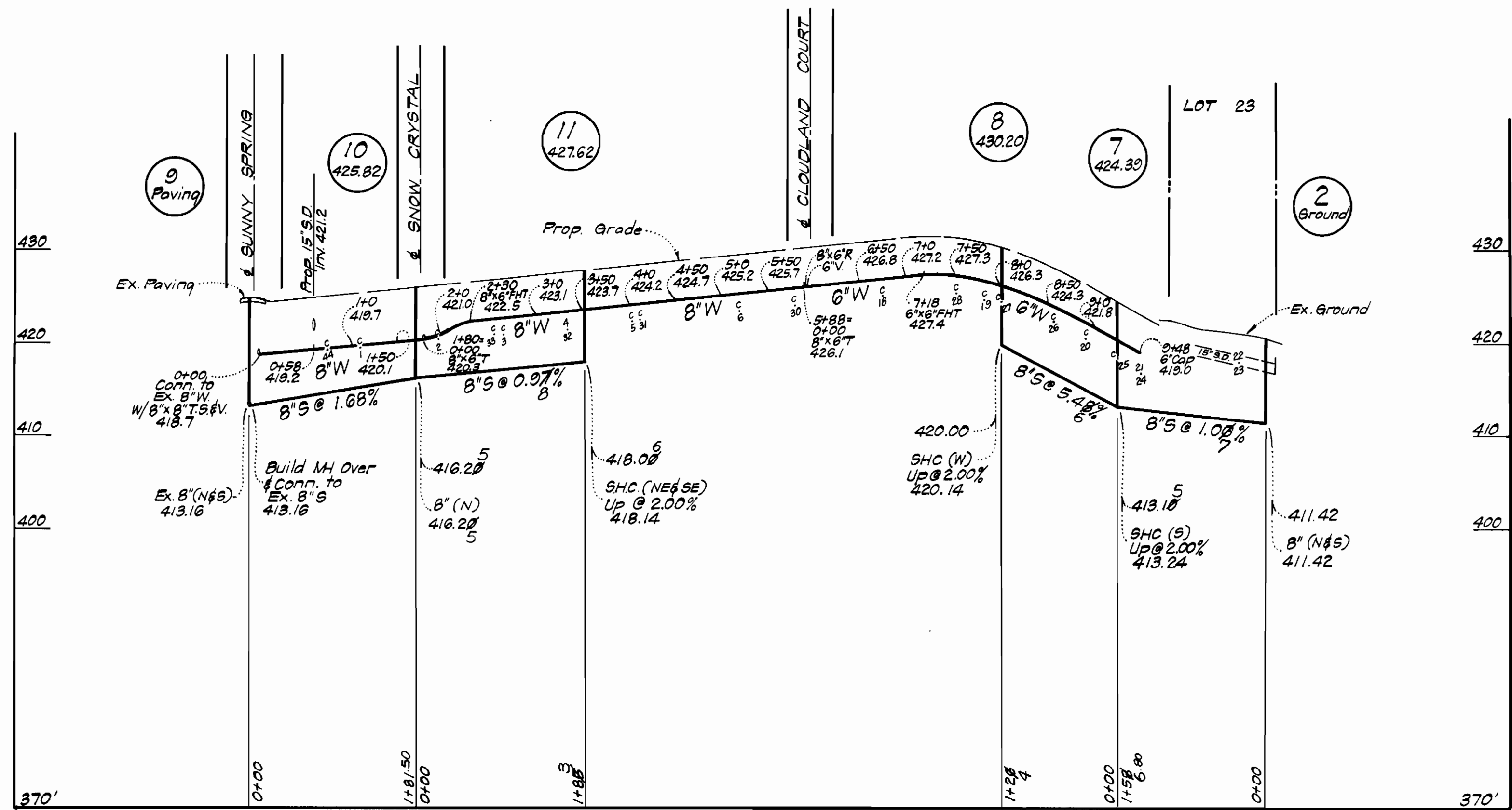
**SNOW CRYSTAL**



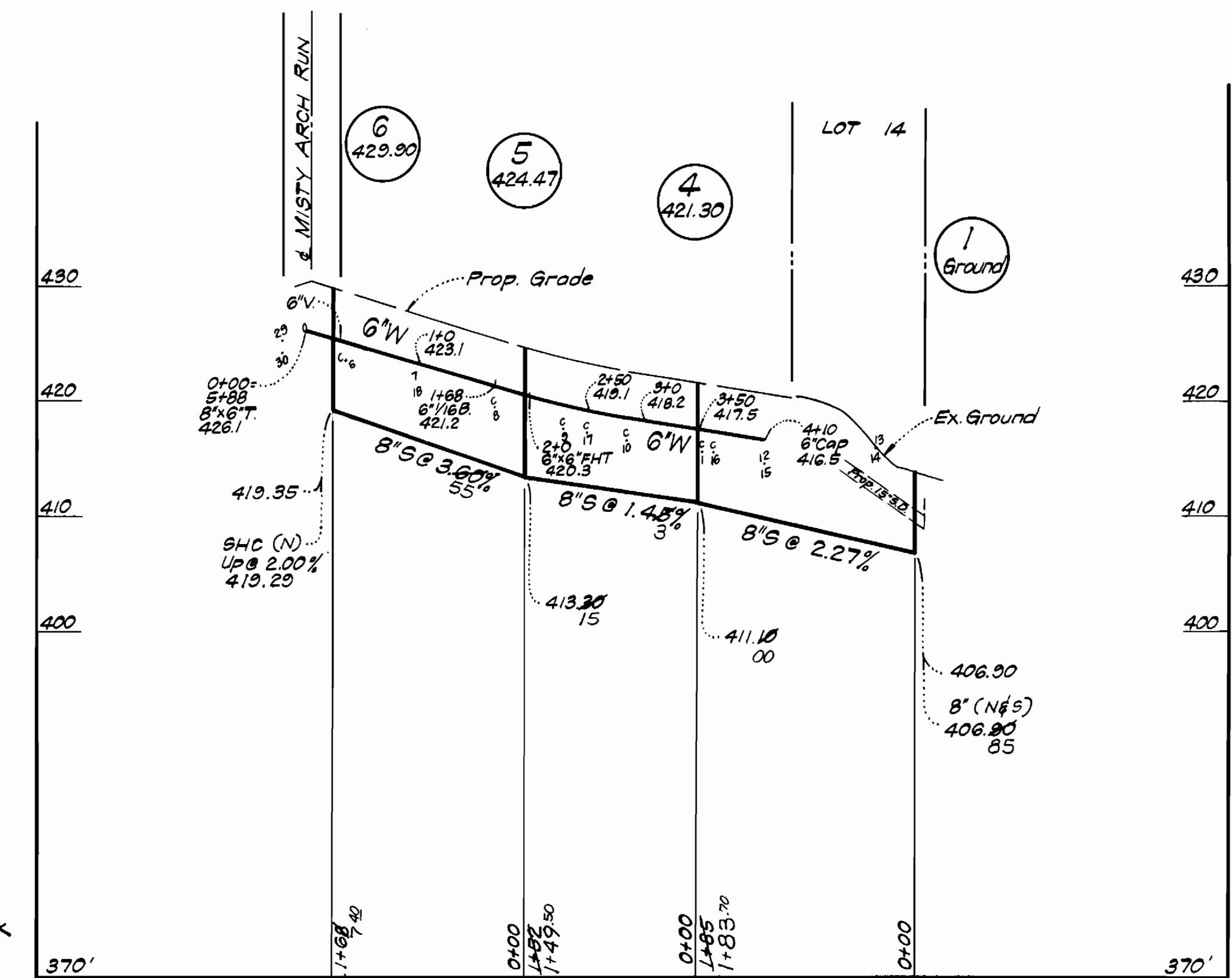
**EXIST. 20' EASEMENT**



**MISTY ARCH RUN**



**CLOUDLAND COURT**



11-7-77  
J. N. Cox

**CLARK • FINEROCK & SACKETT**  
ENGINEERS • PLANNERS • SURVEYORS  
11315 LOCKWOOD DRIVE SILVER SPRING, MARYLAND 20904

DEPARTMENT OF PUBLIC WORKS  
HOWARD COUNTY, MARYLAND  
1-25-78  
DIRECTOR OF PUBLIC WORKS DATE

CONTRACT NO. 2780 D W&S  
CHIEF, BUREAU OF ENGINEERING DATE

PROFILES OF  
WATER & SEWER MAINS

COLUMBIA  
VILLAGE OF HICKORY RIDGE  
ELECTION DISTRICT - CLARKSVILLE No. 5

DRAWING NO. 2 OF 2  
SCALE HOR: 1"=100' VER: 1"=10'