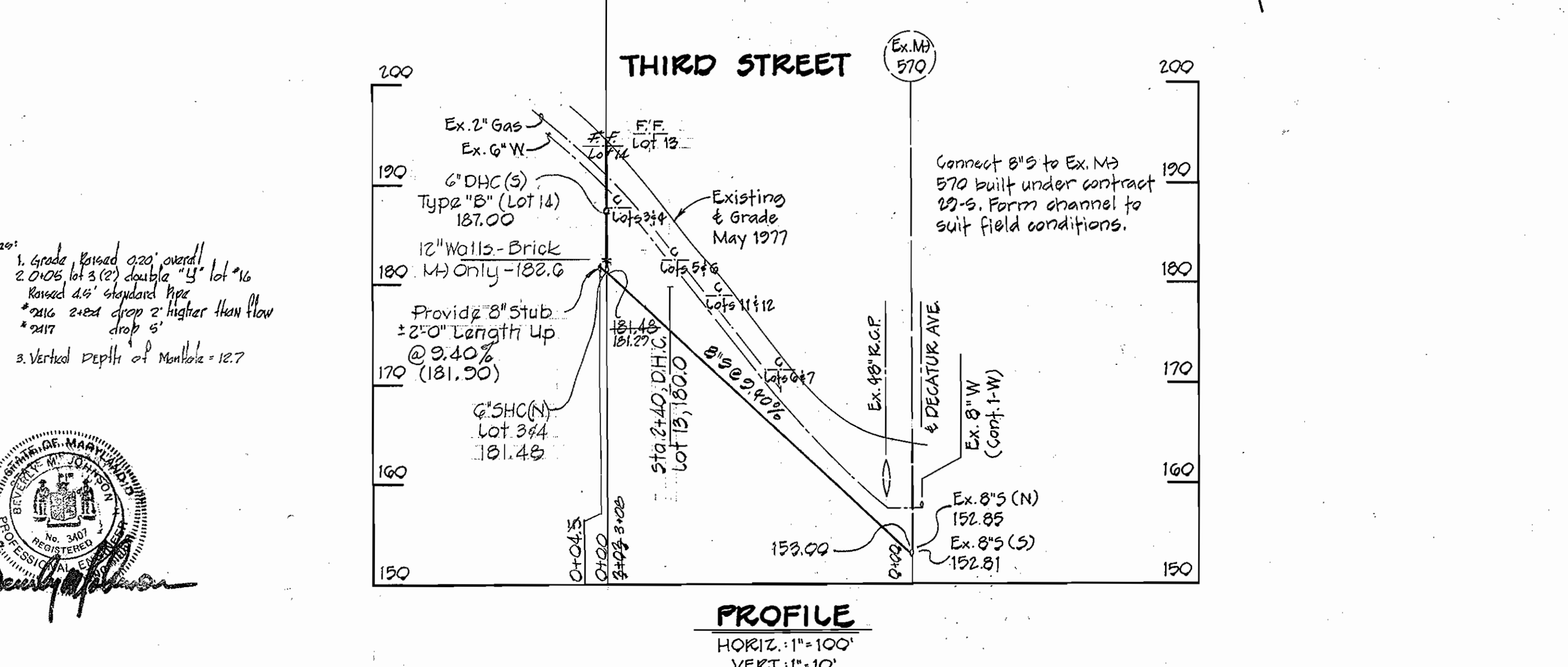
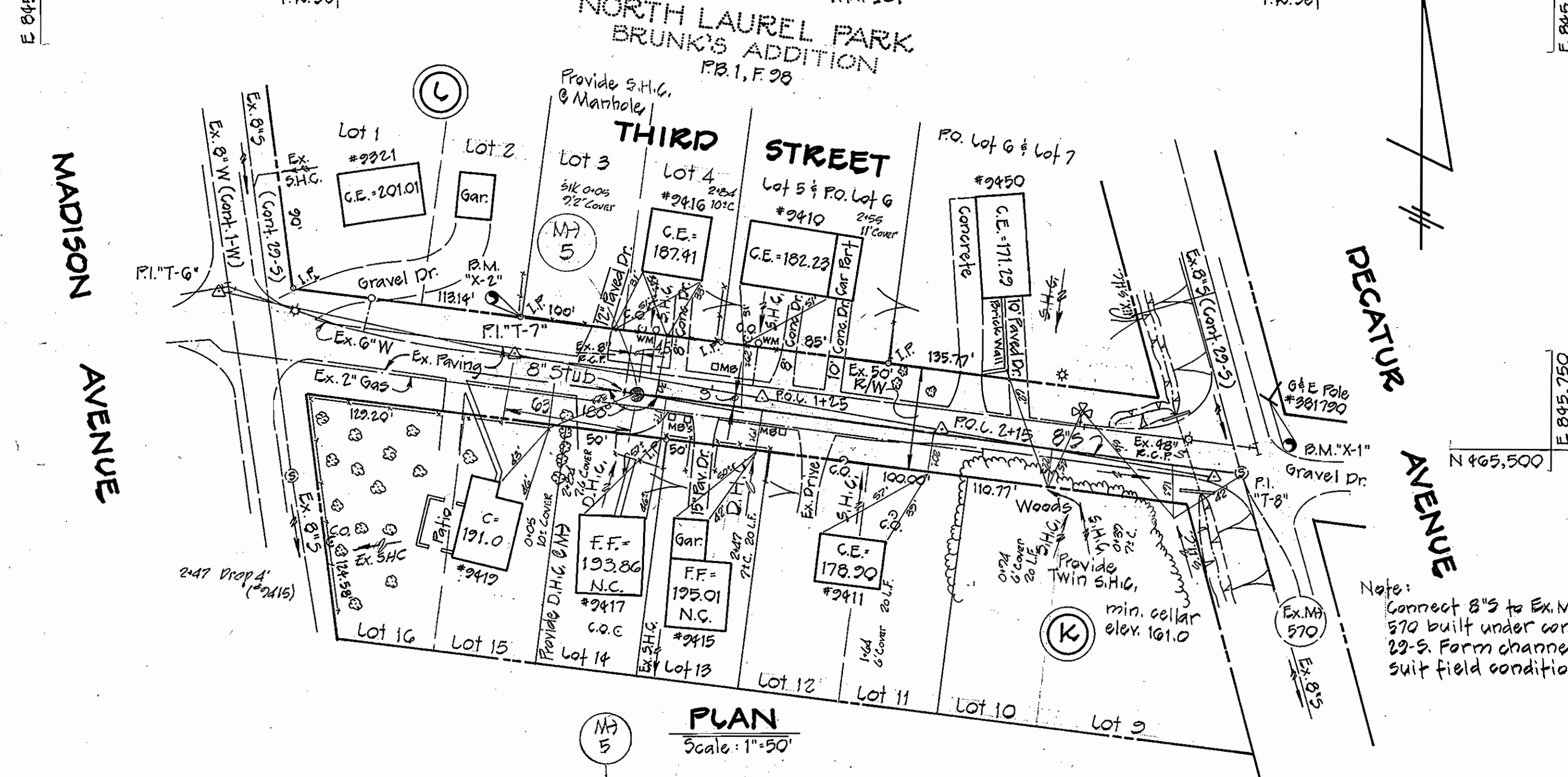
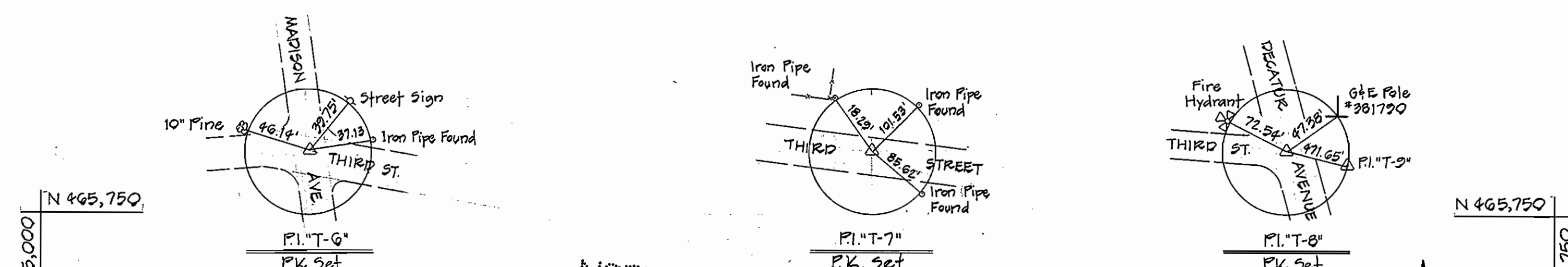
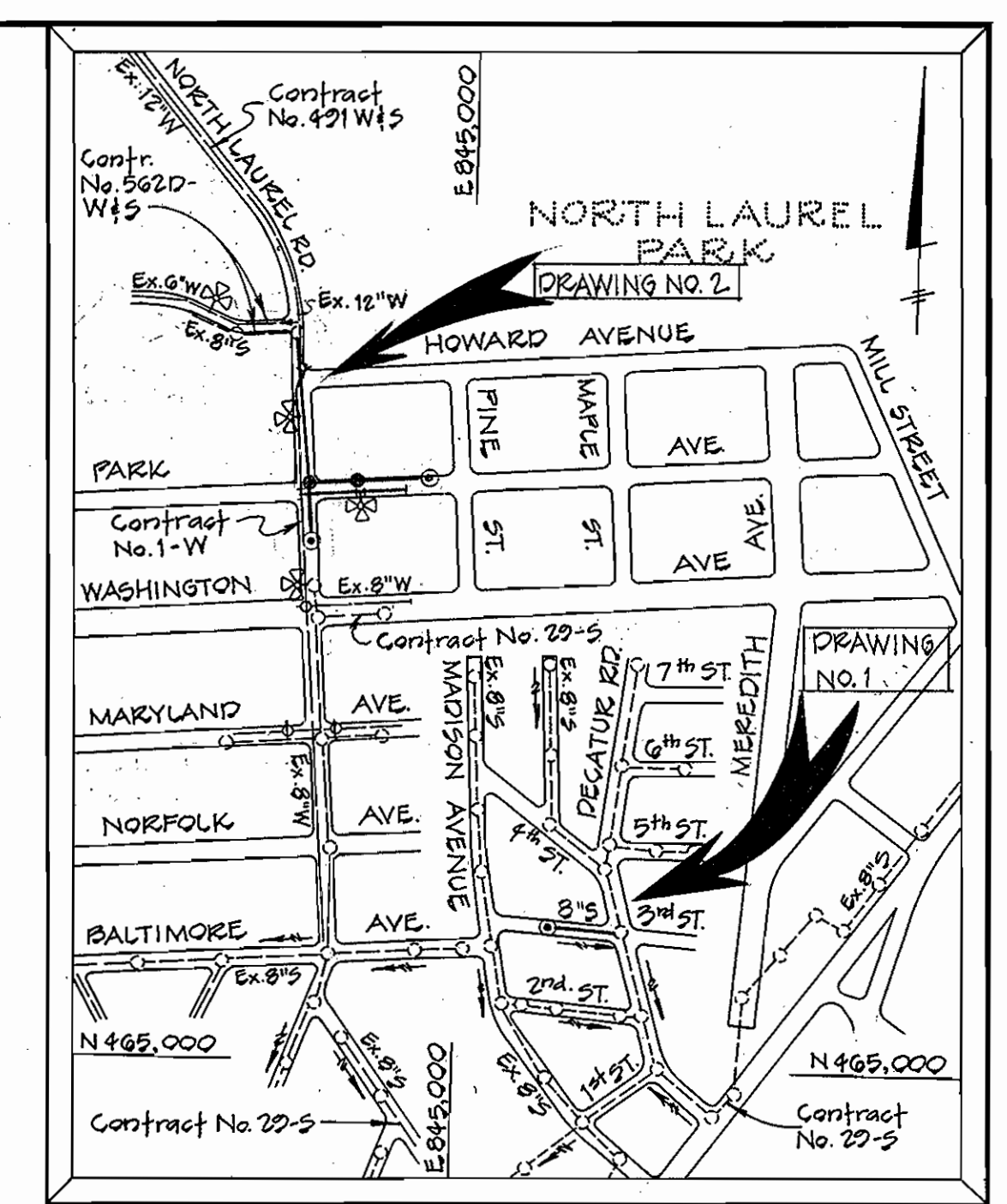


BENCH MARKS

B.M."X-1" Elev. 199.61
 Railroad Spike in G & E Pole #381790 47'±
 Northwest of P.I."T-8".
 B.M."X-2" Elev. 200.79
 Iron Pipe 18.29' Northeast of P.I."T-7" &
 fence corner.



Notes:
 1. Grade raised 2.20' overall
 2. On lot 3 (2) double 'B' lot #16
 raised 4.0' standard pipe
 #2115 2' x 2' drop 2' higher than flow
 drop 5'
 3. Vertical depth of Manhole = 12.7



VICINITY MAP

SCALE: 1"=600'

CONTRACT NO. 2775-W&S
 S-7-6093 NORTH LAUREL COLLECTORS
 S-7-8092 NORTH LAUREL ROAD
 WATER MAIN

GENERAL NOTES

1. Approximate location of existing utilities are shown. The Contractor shall take all necessary precautions to protect the existing utilities and to maintain uninterrupted service. Any damage incurred due to the Contractor's operation shall be repaired immediately at the Contractor's expense.
2. All pipe elevations shown are invert (I) elevations.
3. The Contractor shall locate existing utilities well in advance of construction activities.
4. See standard details bound in specifications.
5. Clear all utilities by a minimum of 6 inches vertically. Clear all utility poles by 2'-0" minimum horizontally or tunnel as required. Any costs incurred to the Contractor for tunneling or bracing poles shall be included in the unit price bid for excavation.
6. The Contractor shall provide a pipe joint in all sewer mains within 2'-0" of exterior manhole walls.
7. All manholes shall be 4'-0" inside diameter, unless otherwise noted.
8. Buttress or anchor all water main fittings with concrete. All valves shall be strapped to tees in accordance with standard details.
9. All water mains to have a minimum of 3.5' cover unless otherwise noted.
10. All fire hydrants shall be strapped to the tee and shall be buttressed with concrete in accordance with standard details. Cost of strapping fire hydrants and valves to be included in the unit price bid for furnishing and installing fire hydrants. Soil around the fire hydrant to be compacted in accordance with Section 5-15 of the Standard Specifications.
11. Bury line elevations on fire hydrants shall be set to the elevations shown on the plan.
12. All horizontal controls are based on Maryland State Coordinates.
13. All vertical controls are based on Maryland State Datum.
14. All sewer mains shall be V.C.P.X., C.S.P.X., or A.C.P., Class 2400 unless otherwise noted.

QUANTITIES

SUPPLIER	ITEM	PROPOSED	"AS-BUILT"
	MANHOLES	56.2 Y.F.	
	8" SEWER	471 L.F.	312 L.F.
	6" SHC	575 L.F.	2204 L.F.
	FIRE HYD.	1 EA.	
	8" WATER	130 L.F.	
	6" WATER	550 L.F.	
	1" WATER	120 L.F.	
	3/4" WATER	10 L.F.	

CONTRACT NO. 2775-W&S
 S-7-6093 NORTH LAUREL COLLECTORS
 S-7-8092 NORTH LAUREL ROAD
 WATER MAIN

"As-Built" sheet 1 of 2 only
 sheet 2 of 2 to be constructed at a later date

PURDUM & JESCHKE
 ENGINEERS
 1023 N. CALVERT ST.
 BALTIMORE, MARYLAND

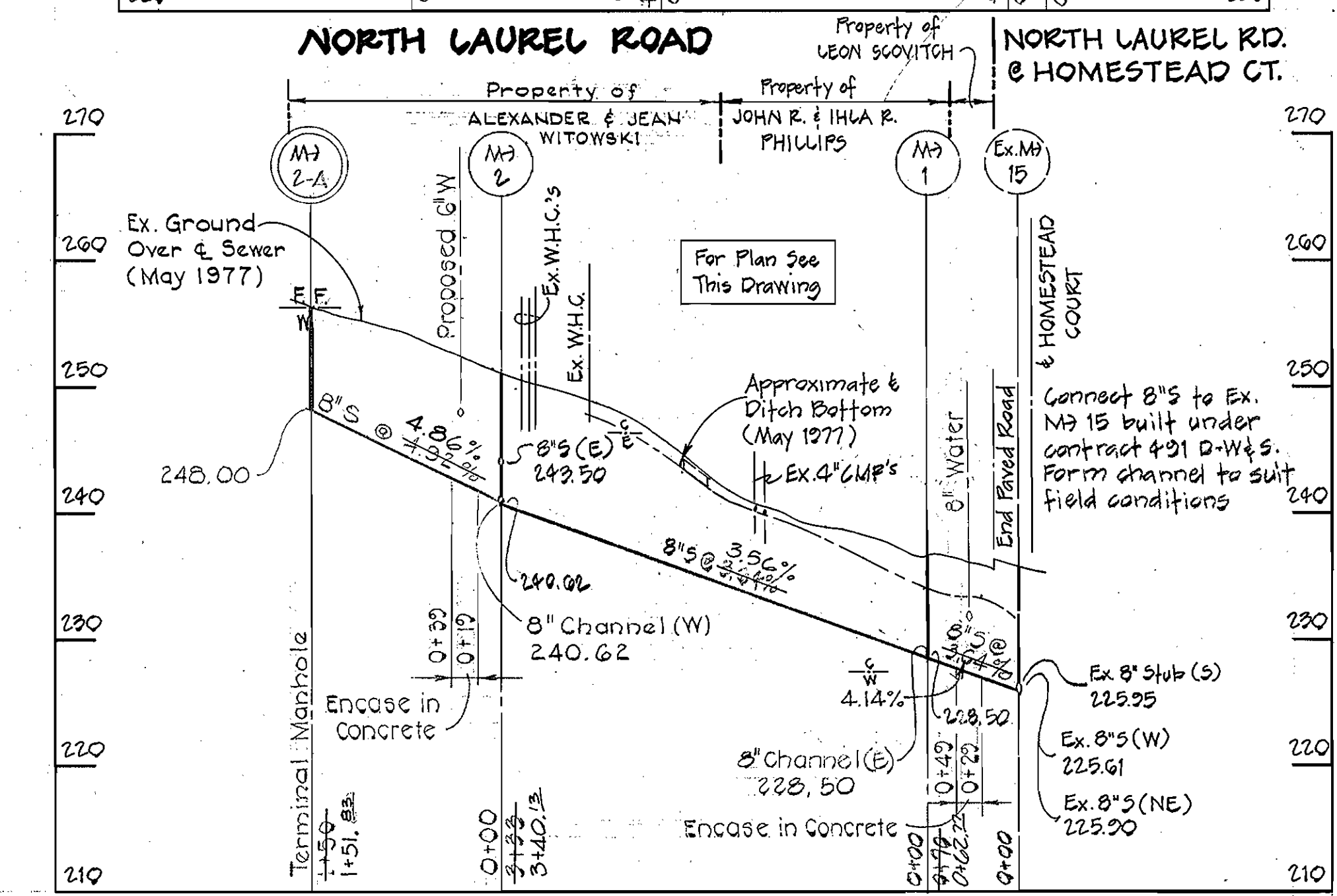
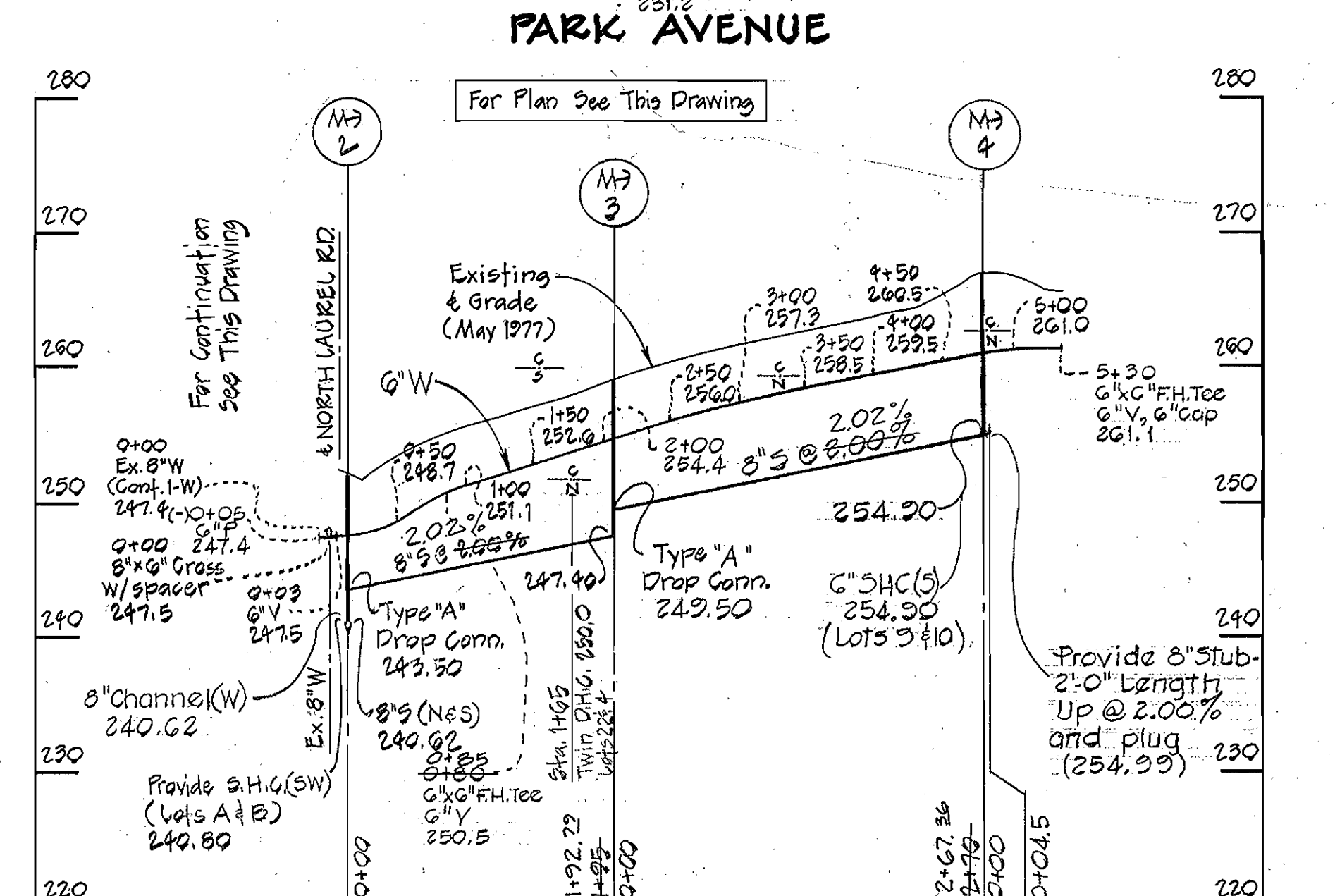
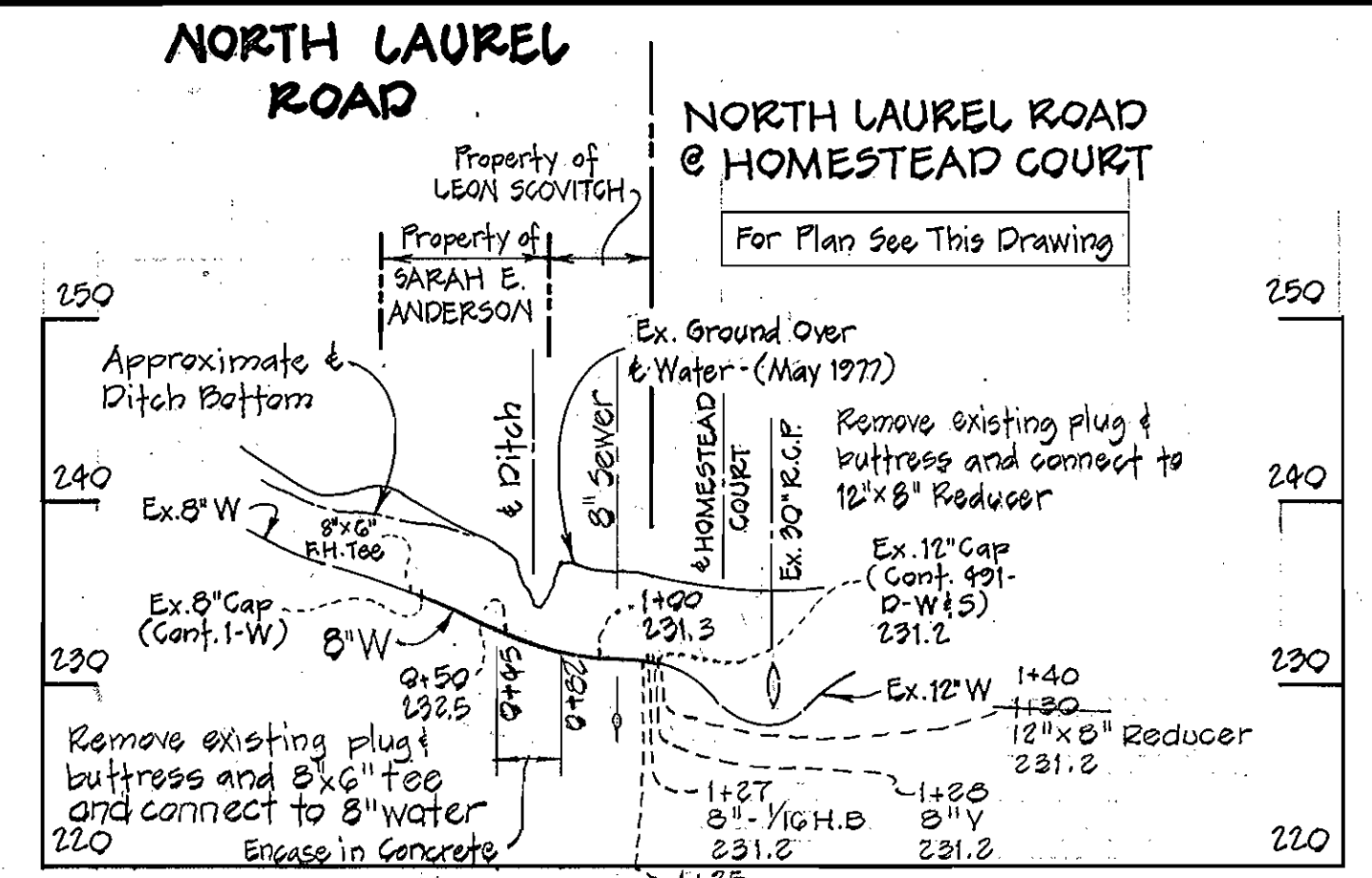
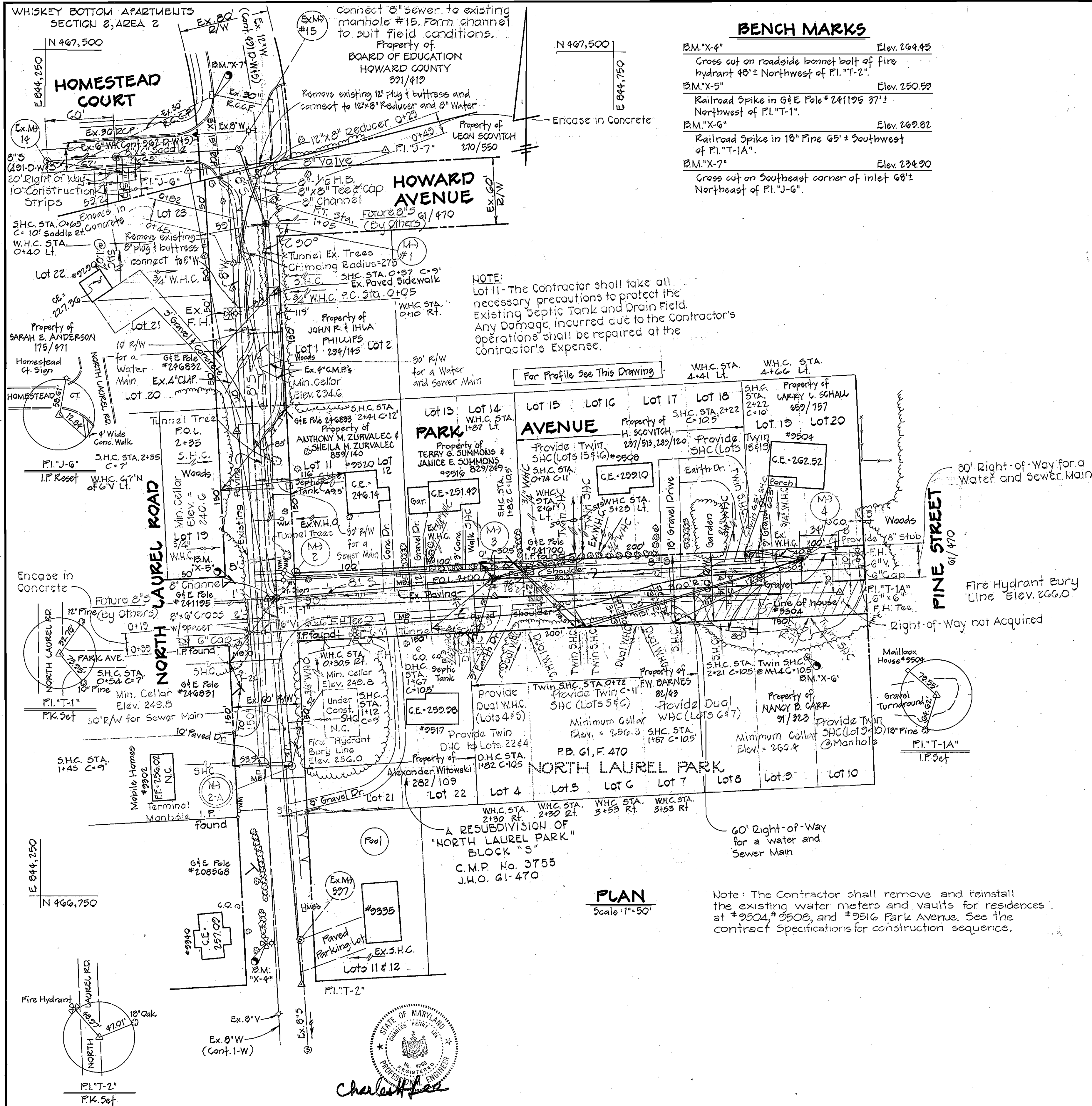
DEPARTMENT OF PUBLIC WORKS
 HOWARD COUNTY, MARYLAND
 227-78
 DATE

CONTRACT NO. 2775-W&S
 S-7-6093
 CAPITAL PROJECT NOS. W-7-8092

PLAN & PROFILE
 SEWER MAIN

CAPITAL PROJECT NOS. S-7-6093 & W-7-8092
 NORTH LAUREL COLLECTOR SEWER AND WATER MAINS
 ELECTION DISTRICT NO. 6

DRAWING NO. 1 OF 2
 SCALE AS SHOWN
 Designed: RDB
 Drafted: REC
 Checked: TAF



PURDUM & JESCHKE
 ENGINEERS
 1023 N. CALVERT ST.
 BALTIMORE, MARYLAND

DEPARTMENT OF PUBLIC WORKS
 HOWARD COUNTY, MARYLAND
 227-78
 DATE: 11/10/80

CONTRACT NO. 2775-W&S
 CAPITAL PROJECT NOS. S-7-6093 W-7-8092

PLAN & PROFILES
 WATER AND SEWER MAINS

CAPITAL PROJECT NOS. S-7-6093 & W-7-8092
 NORTH LAUREL COLLECTOR SEWER AND WATER MAINS
 ELECTION DISTRICT NO. 6

DRAWING NO. 2 OF 2
SCALE AS SHOWN
 Designed: J.O.D.
 Drafted: REC
 Checked: REP