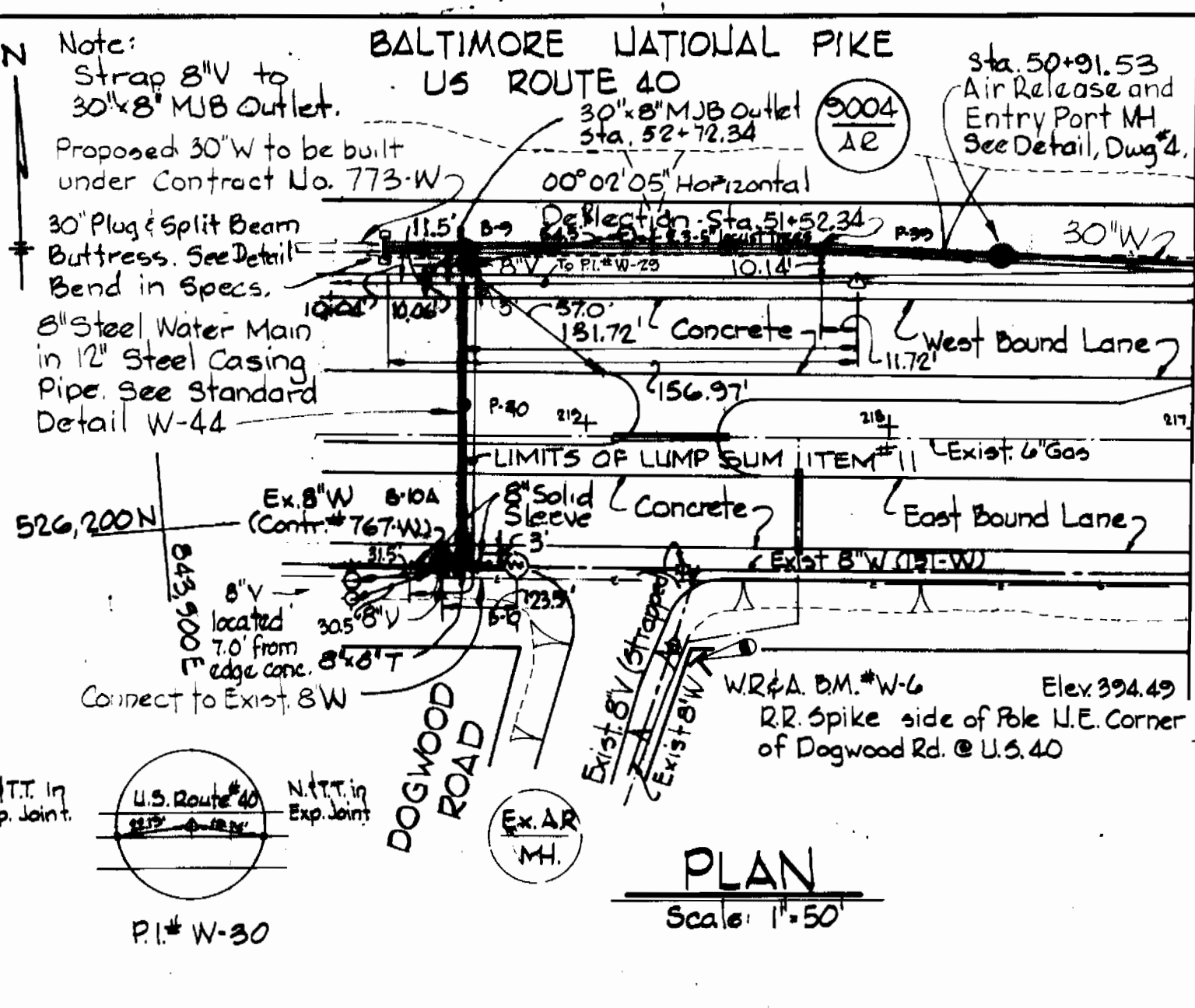
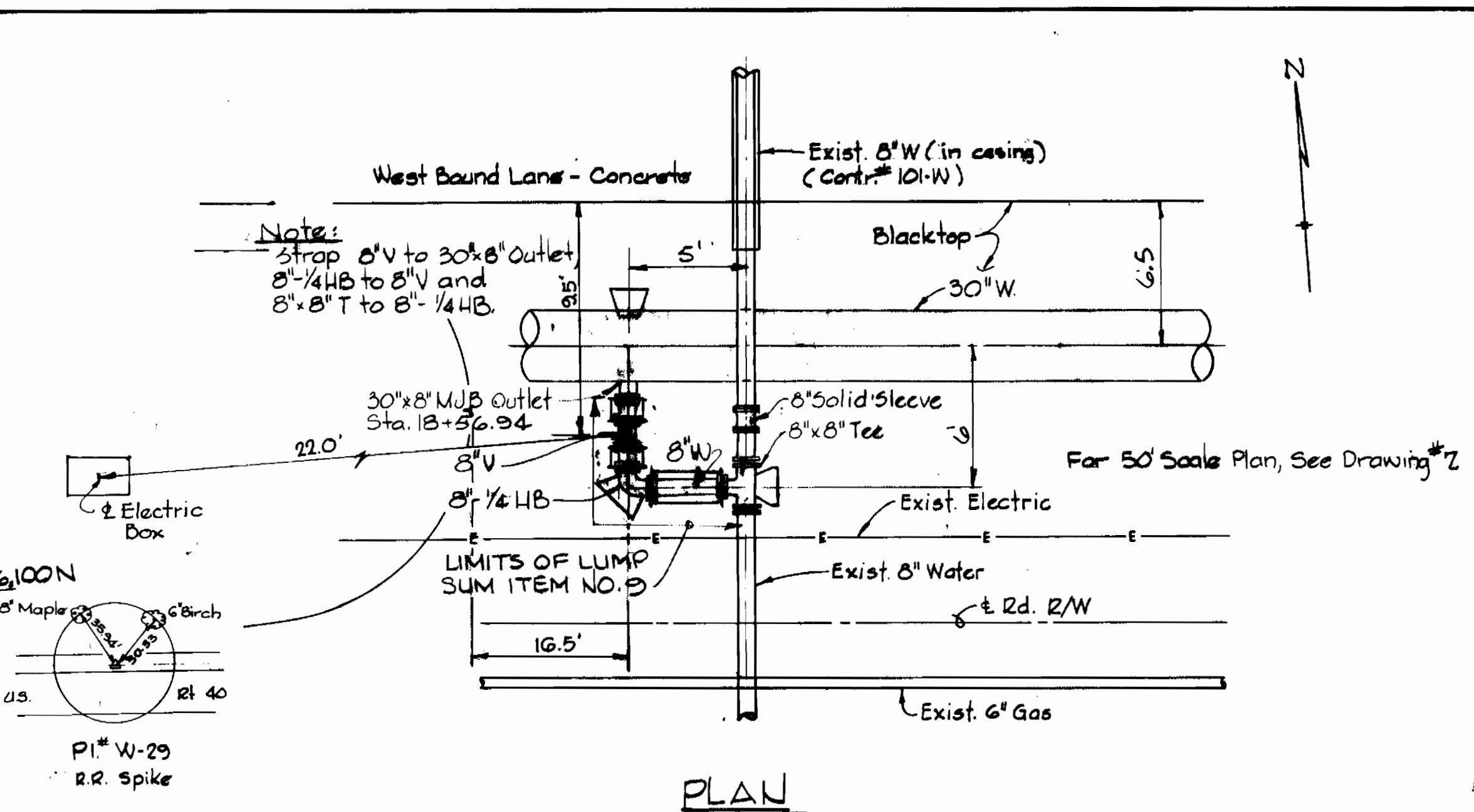


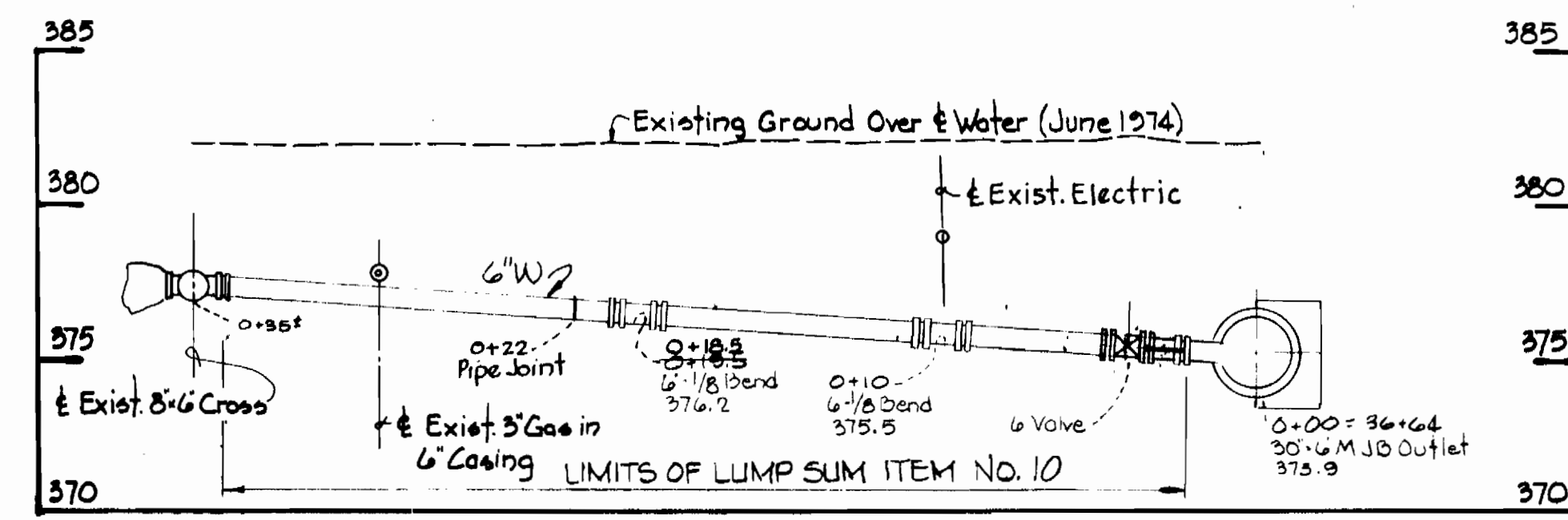
PLAN
Scale: 1"=5'



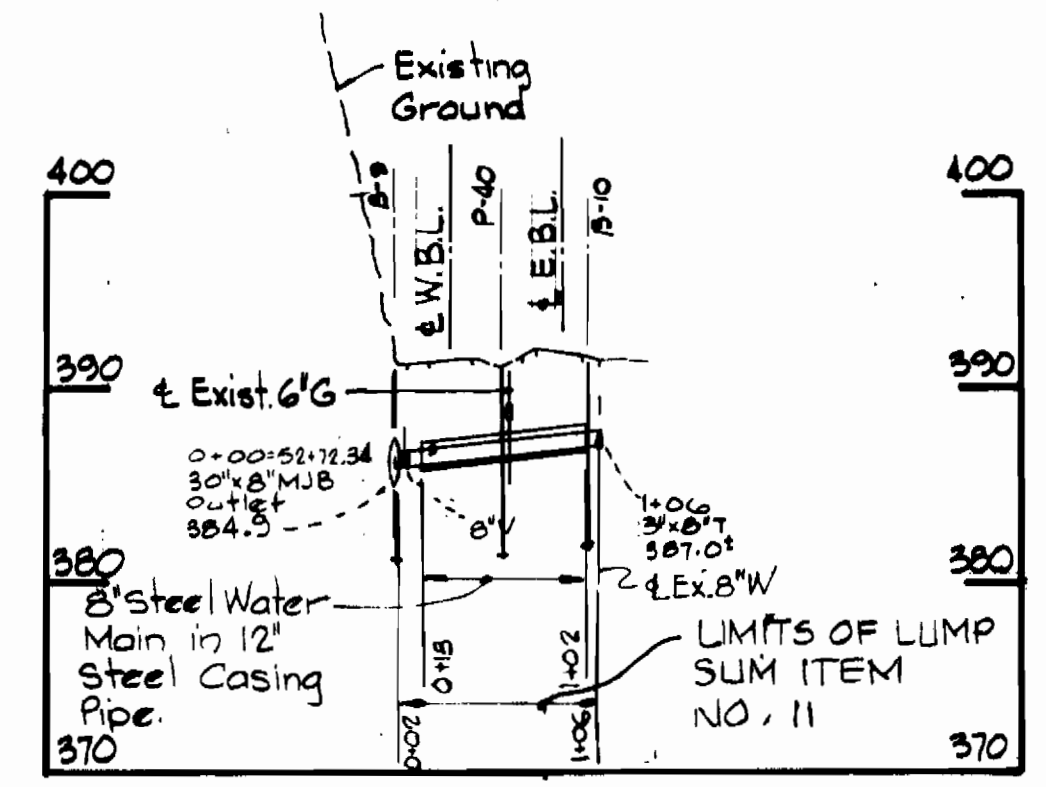
PLAN
Scale: 1"=50'



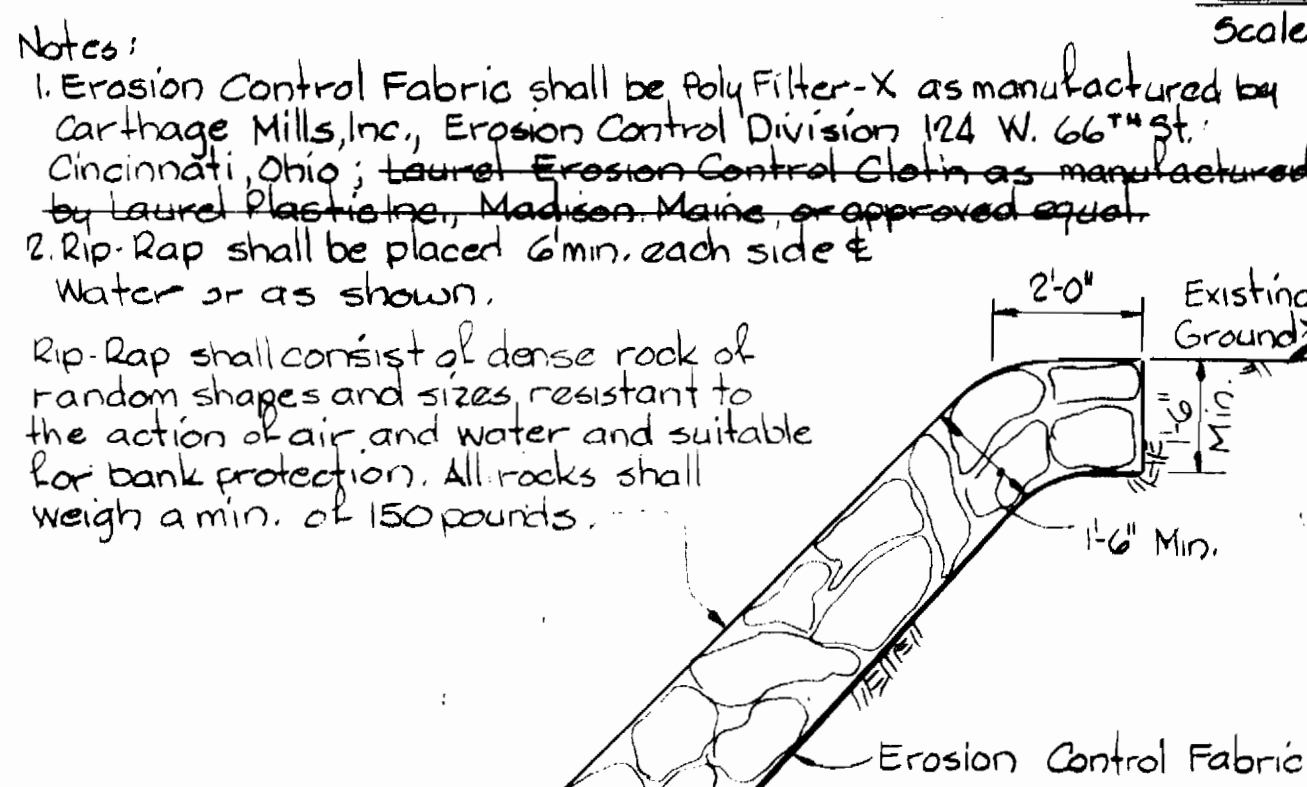
PLAN
Scale: 1"=5'



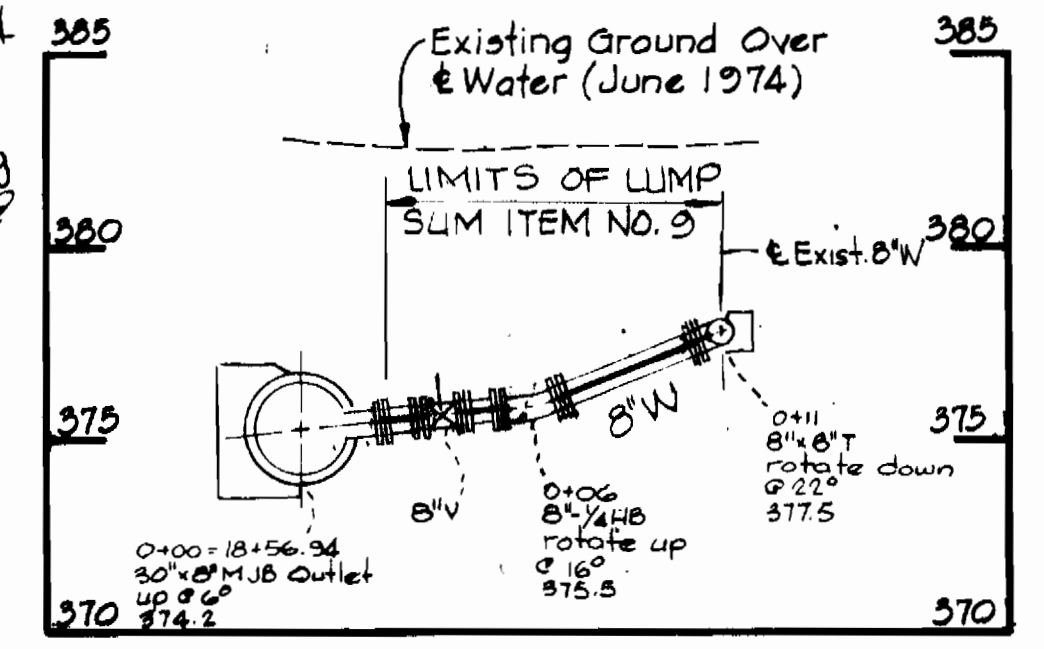
PROFILE
Scale: 1"=5' H&V



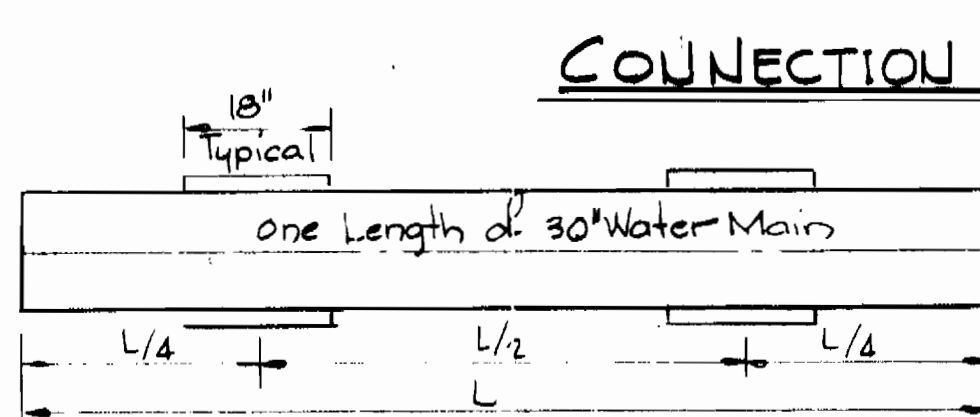
PROFILE
Scale: 4"=100'
V: 1"=10'



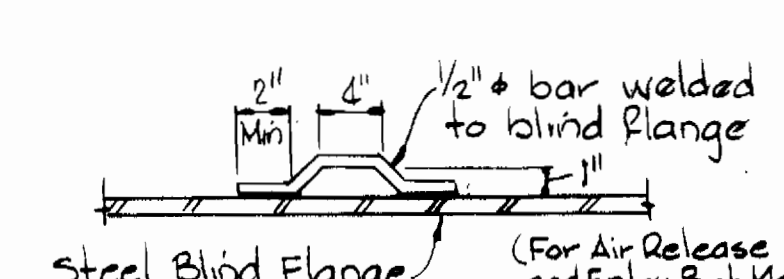
RIP-RAP DETAIL
Scale: 3/8"=1'-0"



PROFILE
Scale: 1"=5' H&V

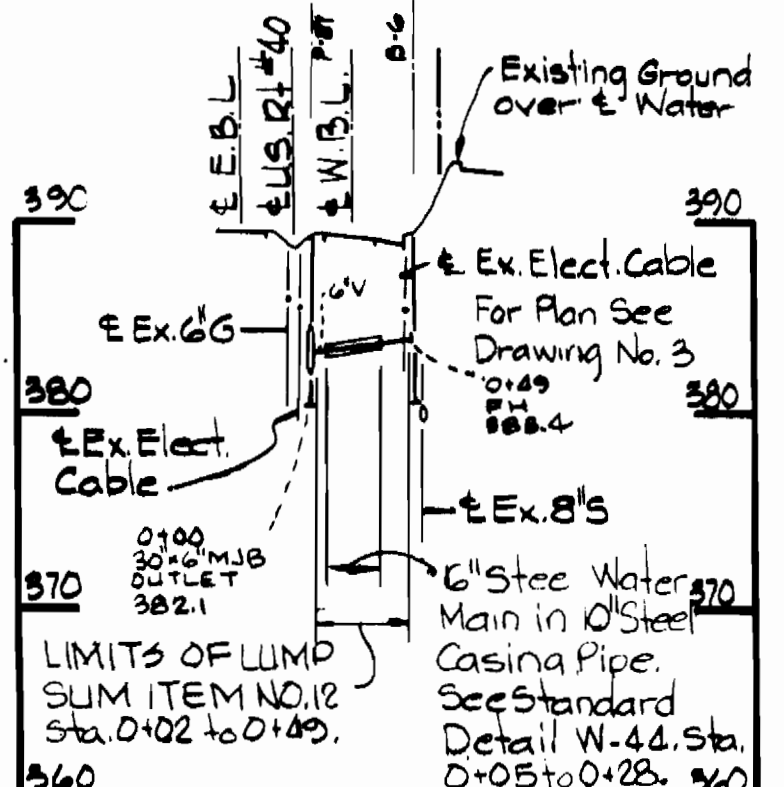


WOOD BLOCK SPACING
Scale: 1/2"=1'-0"

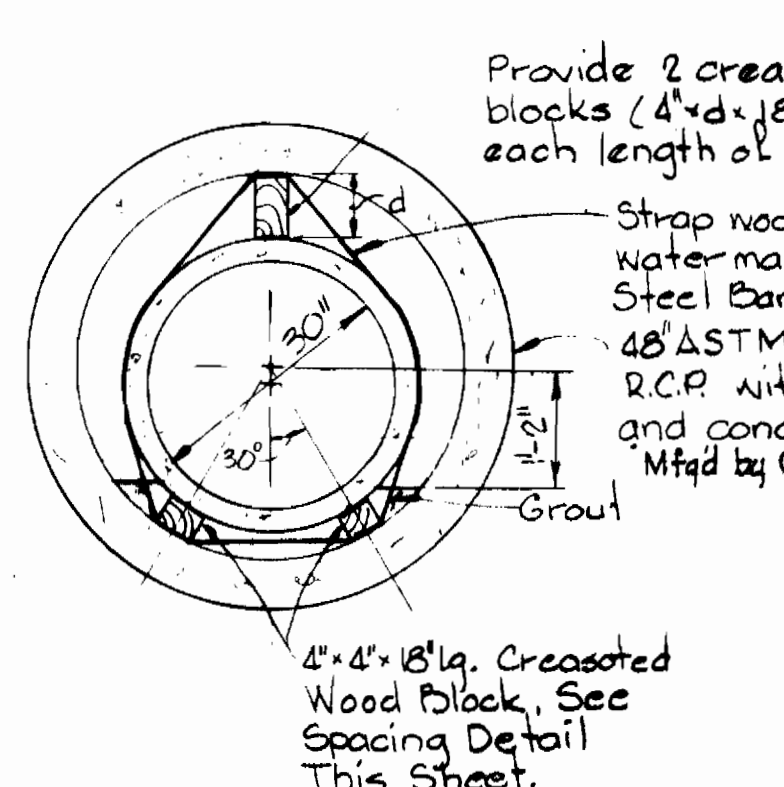


LIFTING HOOK DETAIL
Scale: 1 1/2"=1'-0"

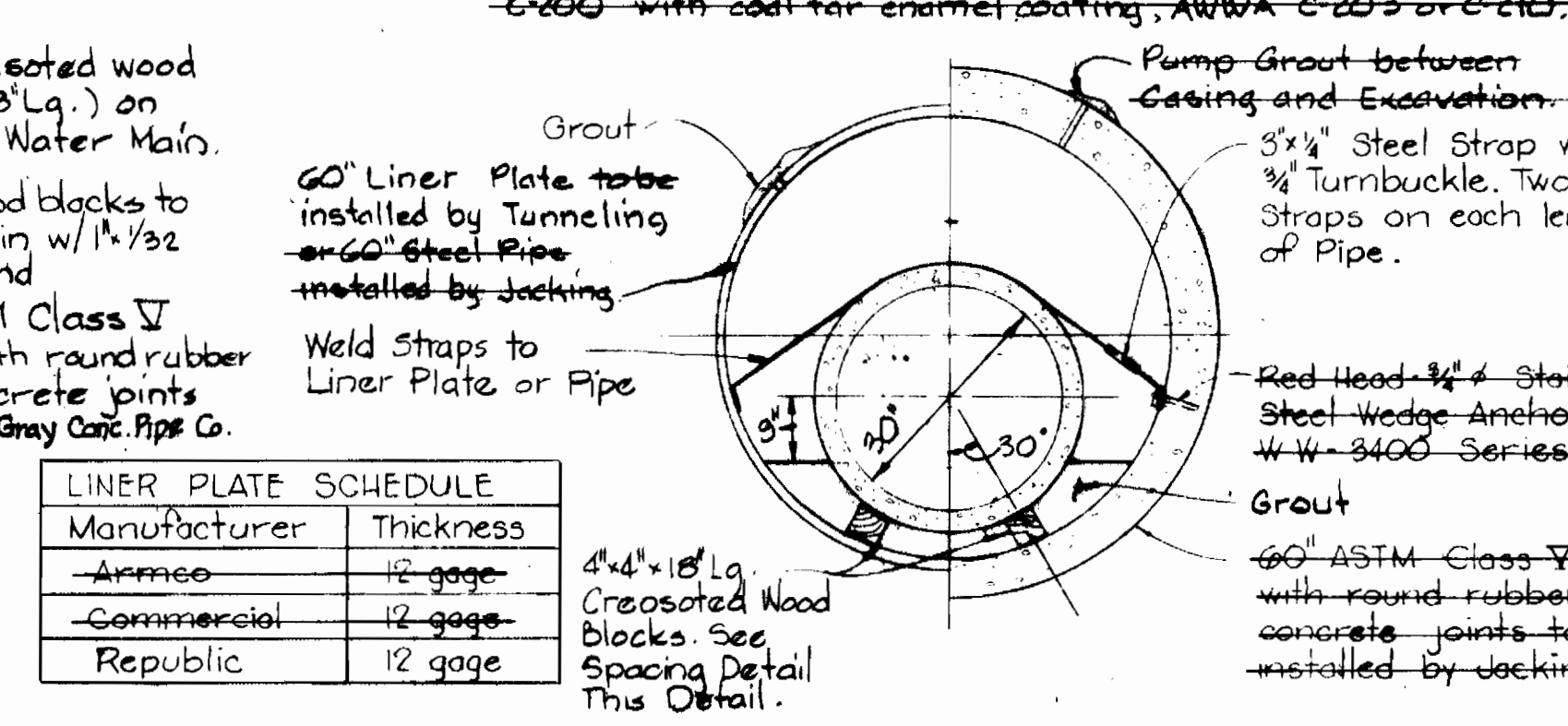
- Notes:
- Tunnel liner plate shall be hot dipped galvanized in accordance with ASTM A-123 and coated with Bitumastic 50 as manufactured by the Koppers Co. or approved equal.
 - A joint shall be provided in the water main outside of casing within 2-feet of each end of casing.
 - Provide 8 inch brick bulkhead at each end of casing. Provide drain pipes through bulkhead on each side of water main at low end of casing. (2'-2")
 - Paint all straps with 2 coats of Mobile Asphalt 35-J-11 or approved equal.
 - Steel casing installed by jacking shall be 1/2" min. thick, AWWA C-200 with coal-tar enamel coating, AWWA C-203 or C-210.



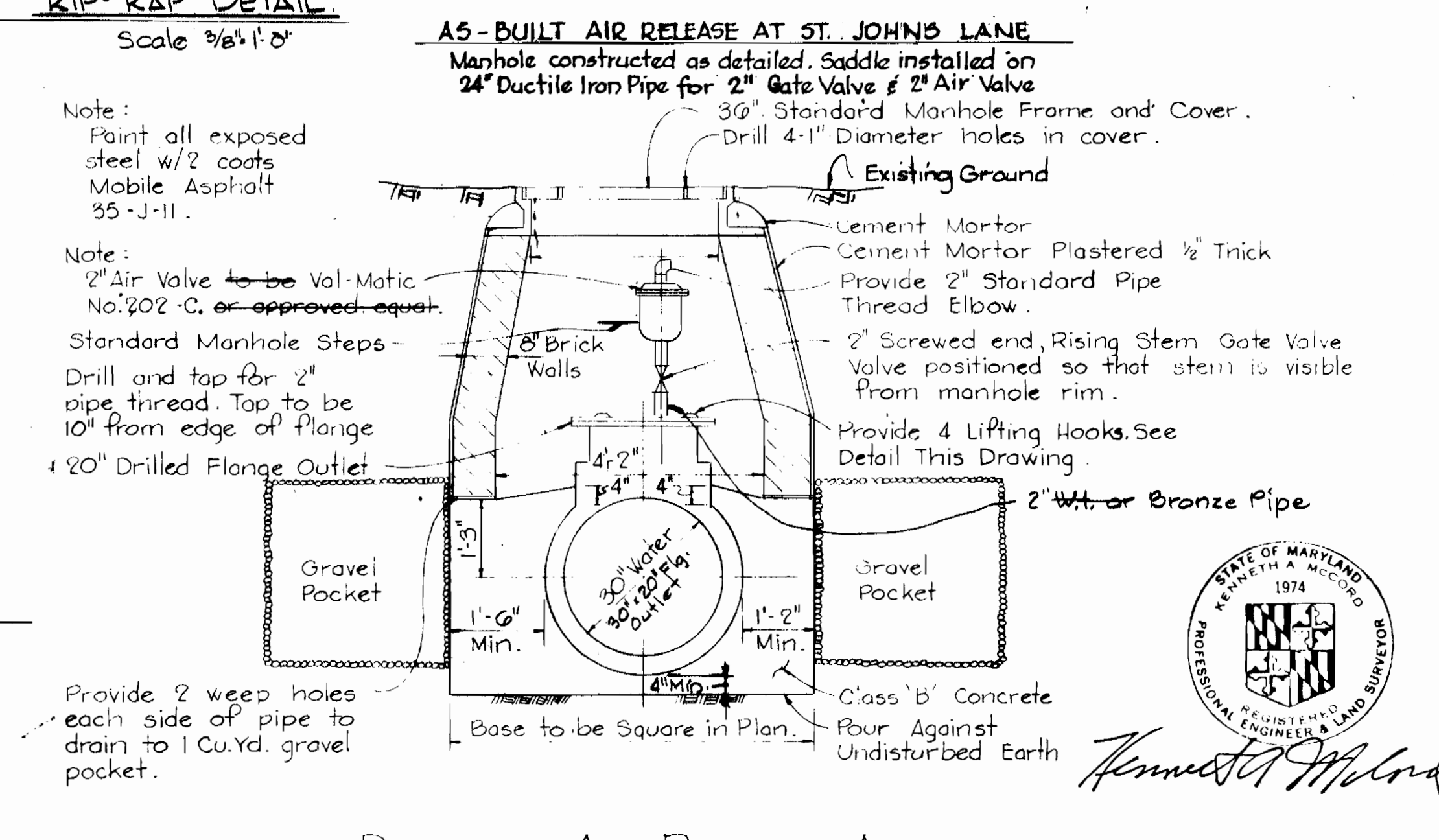
PROFILE Scale: 1"=1'-0"
FIRE HYDRANT AT STATION 195+85



48" CASING DETAIL
Scale: 1/2"=1'-0"



60" CASING DETAIL
Scale: 1/2"=1'-0"

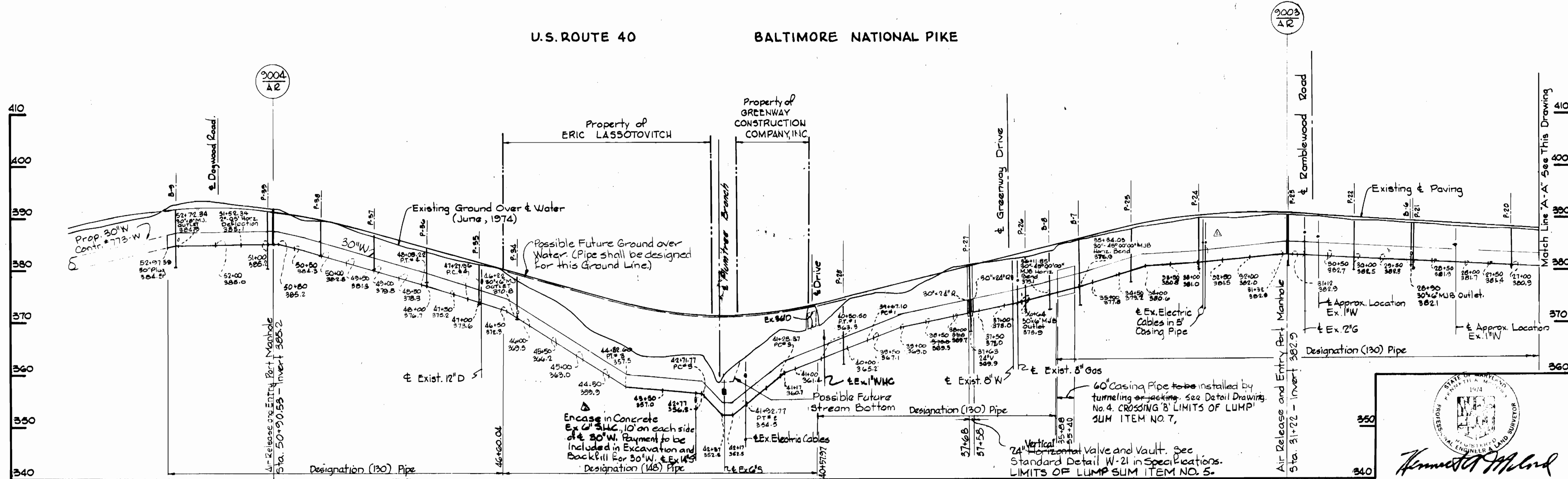
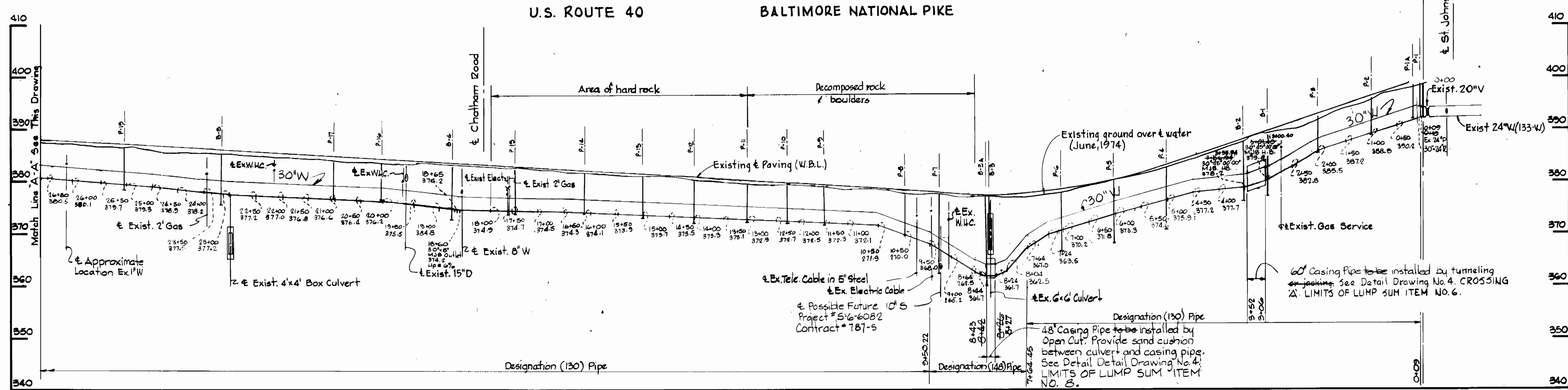


DETAIL OF AIR RELEASE AND ENTRY PORT MANHOLE
Scale: 1/2"=1'-0"

U.S. Route #40 Water Main
Project No. W-4-8032
Contract No. 772-W



WHITMAN, REQUARDT & ASSOCIATES ENGINEERS 1304 ST. PAUL ST. BALTIMORE, MARYLAND	DEPARTMENT OF PUBLIC WORKS HOWARD COUNTY, MARYLAND F. Nunn 5-14-79 DIRECTOR OF PUBLIC WORKS - DATE	CONTRACT NO. 772-W PROJECT NO. W-4-8032	PLANS, PROFILES & DETAILS OF WATER MAINS	U.S. ROUTE 40 WATER MAIN ELECTION DISTRICT ELlicOTT CITY NO.2	DRAWING NO. 4	SCALE AS SHOWN
					OF 5	



No	Date	Revision
1	6-19-80	Encase Ex G'SMC
2	4-9-80	Revise Profile
		Revision

Kenneth M. Clark

U.S. Route 40 Water Main
 Project No. W-4-8092
 Contract No. 772-W

WHITMAN, REQUARDT & ASSOCIATES
 ENGINEERS
 1304 ST. PAUL ST.
 BALTIMORE, MARYLAND

DEPARTMENT OF PUBLIC WORKS
 HOWARD COUNTY, MARYLAND
John F. Nummy 5-14-79
 DIRECTOR OF PUBLIC WORKS - DATE

CONTRACT NO. 772-W
PROJECT NO. W-4-8032

PROFILES OF
WATER MAINS

U.S. ROUTE 40 WATER MAIN
ELECTION DISTRICT
ELLCOTT CITY NO. 2

DRAWING
NO. 5
OF 5

SCALE
H: 1"=100'
V: 1"=10'