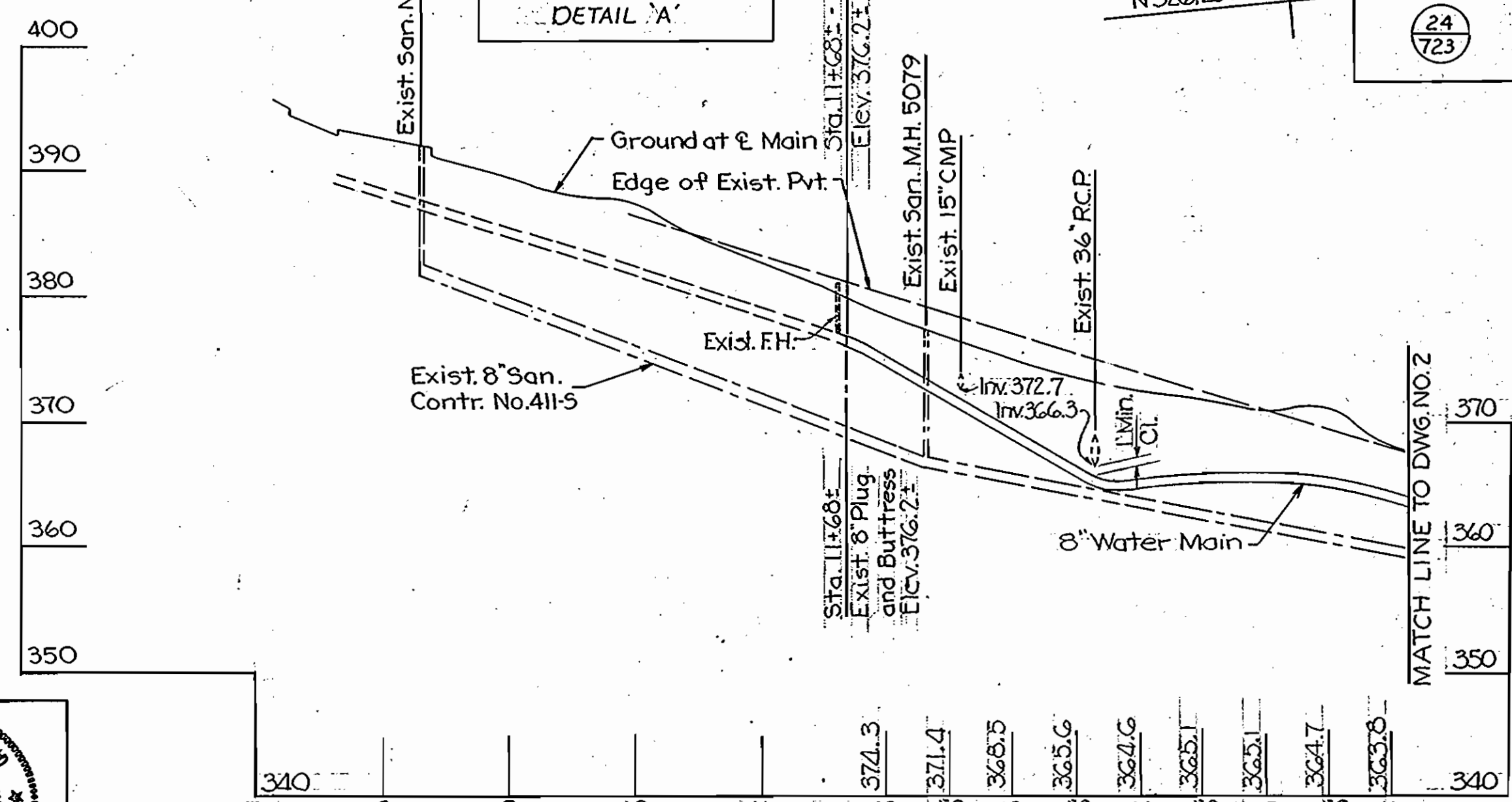
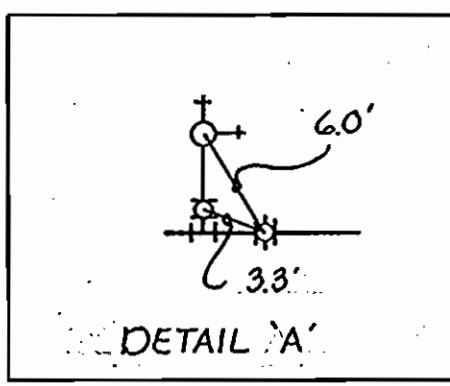
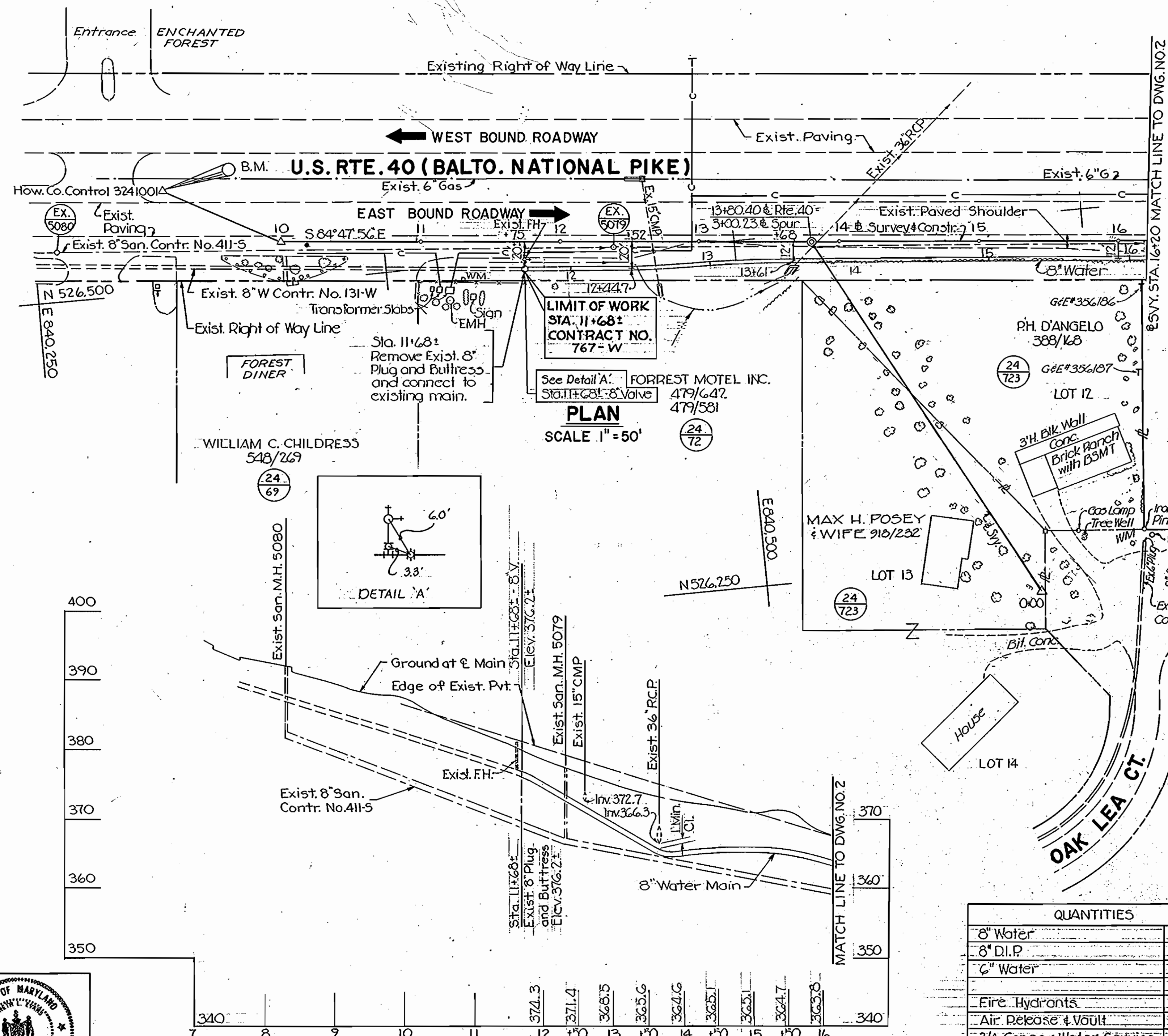
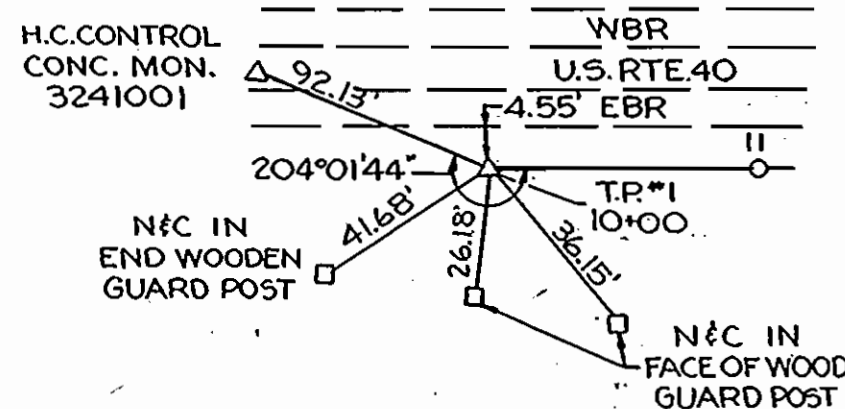
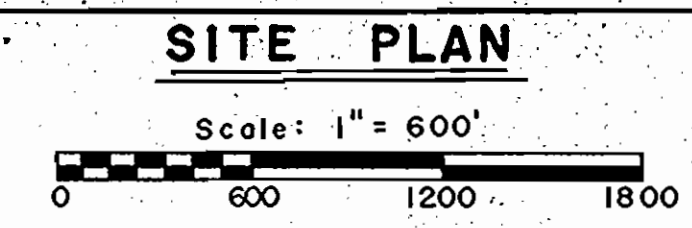
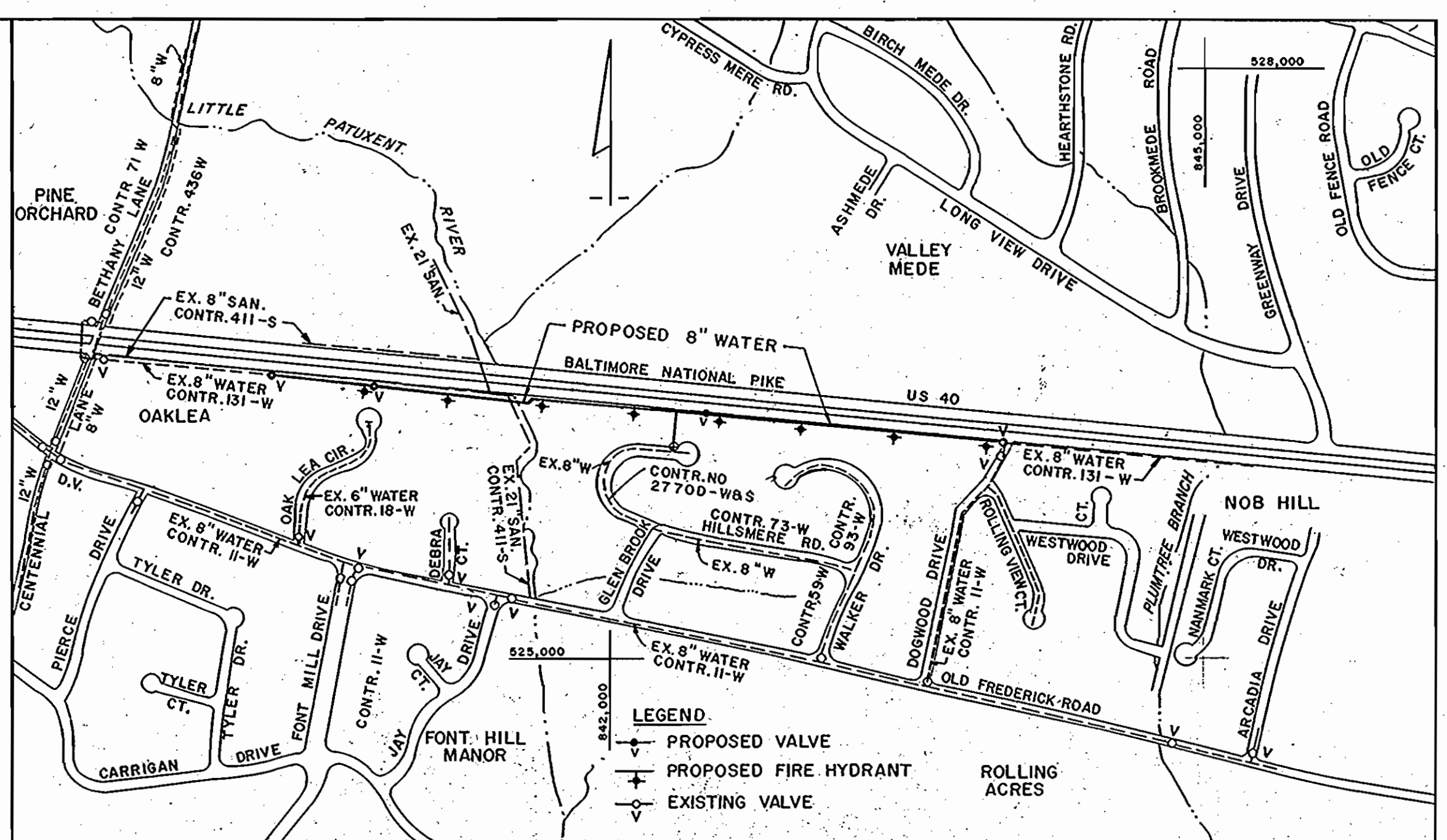


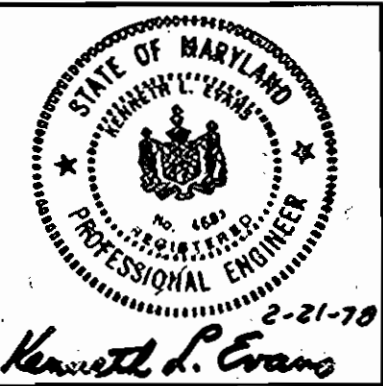
BM. Howard Co. Mon. 3241001
 Conc. Mon. of surface 9.3' N. of N.
 edge of Rte. 40 E. Bound, 71' E.
 of E. edge of crossover at
 Enchanted Forest. Elev. 338.648



QUANTITIES	
8" Water	5,864 L.F.
8" D.I.P.	92 L.F.
6" Water	80 L.F.
Fire Hydrants	8
Air Release & Vault	1
3/4" Copper Water Service	2.5 L.F.



- GENERAL NOTES**
1. Approximate locations of existing mains are shown. The contractor shall take all the necessary precautions to protect the existing mains and services and maintain uninterrupted supply. Any damage incurred due to the contractor's operations shall be repaired immediately at the contractor's expense.
 2. All pipe elevations shown are invert elevations.
 3. The contractor shall locate existing utilities a minimum of two weeks in advance of construction operations in the vicinity of proposed utilities.
 4. For all standard details see standards bound in specifications.
 5. Clear all utilities by a minimum of 6". Clear all utility poles by 2'-0" or tunnel as required. Any costs incurred to the contractor for tunneling or bracing at poles shall be included in unit prices bid for excavation.
 6. Contractor shall notify the following utilities or agencies at least five (5) days before starting work shown on these plans:
 State Highway Administration - 531-5533
 Baltimore Gas & Electric Company - Underground Electric Distribution Engineering - "Damage Control" - 234-5691
 Baltimore Gas & Electric Company - Underground Gas Distribution Engineering - 559-0100
 Chesapeake & Potomac Telephone Company - 725-9976
 Miss Utility - 393-3648
 7. Trees are to be protected from damage to maximum extent. Trees located within the construction strip are not to be removed or damaged by the contractor.
 8. Place regulation "Men Working" and warning signs as required to comply with Maryland State Highway Administration manual of Traffic Control for Highway Construction and Maintenance operations.
 9. All water mains to be C.I.P. D.I.P. or A.C.P. unless otherwise noted.
 10. Top of all water mains to have a minimum of 3'-6" cover unless otherwise noted.
 11. All valves shall be strapped to tees, where applicable, in accordance with standard details.
 12. Buttress or anchor all water main fittings with concrete. See Standard details bound in the Specifications.
 13. Bury line elevations on fire hydrants shall be set to the elevations shown on the drawings. All fire hydrants shall be strapped and buttressed with concrete in accordance with standard details. Soil around the fire hydrant to be compacted in accordance with Section 5-15 of the Standard Specifications.
 14. Cost of strapping fire hydrants and valves to be included in the unit price bid for furnishing and installing fire hydrants.
 15. All horizontal controls are based on Maryland State Coordinates.
 16. All vertical controls are based on USC & GS Datum.
 17. Contractor shall remove trees, stumps and roots along line of excavation as directed by the Engineer. Payment for such removal shall be included in the unit price bid for excavation and backfill for water mains.



THE WILSON T. BALLARD COMPANY
 CONSULTING ENGINEERS
 OWINGS MILLS MARYLAND

DEPARTMENT OF PUBLIC WORKS
 HOWARD COUNTY, MARYLAND
 DATE: 3-7-78
 CHIEF - BUREAU OF ENGINEERING

CONTRACT NO. 767-W
 PROJECT NO. W-4-8076

PLAN AND PROFILE
 OF 8" WATER MAIN

US ROUTE 40 WATER MAIN
 DOGWOOD DRIVE TO THE LITTLE PATUXENT RIVER
 ELECTION DISTRICT NO. 2

U.S. ROUTE 40
 PROJECT NO. W-4-8076
 CONTRACT NO. 767-W

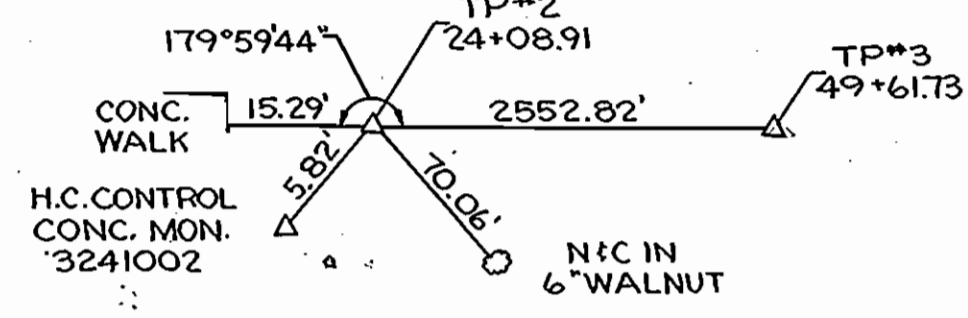
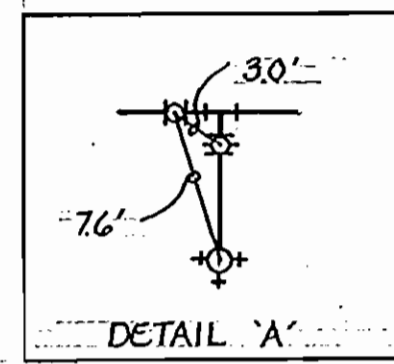
DRAWING NO. 1 OF 4
 SCALE AS SHOWN

DATE: 7-16-79

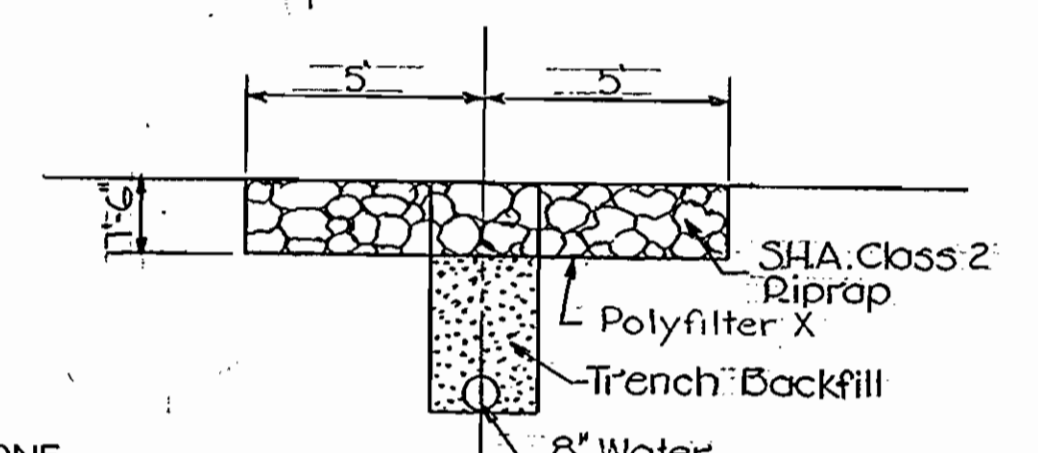
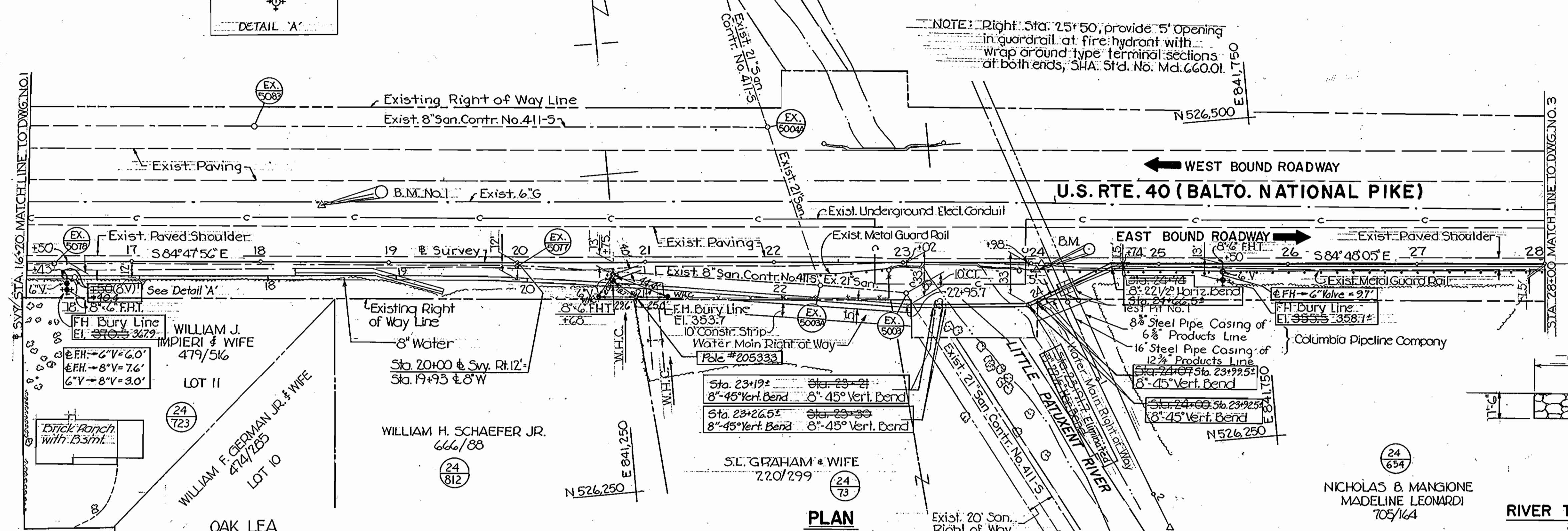
WS767-W/1

BM. No. 1 - Cut on Stone Inlet
44.5' L.I. - Survey Sta. 18+48
Elev. 359.662

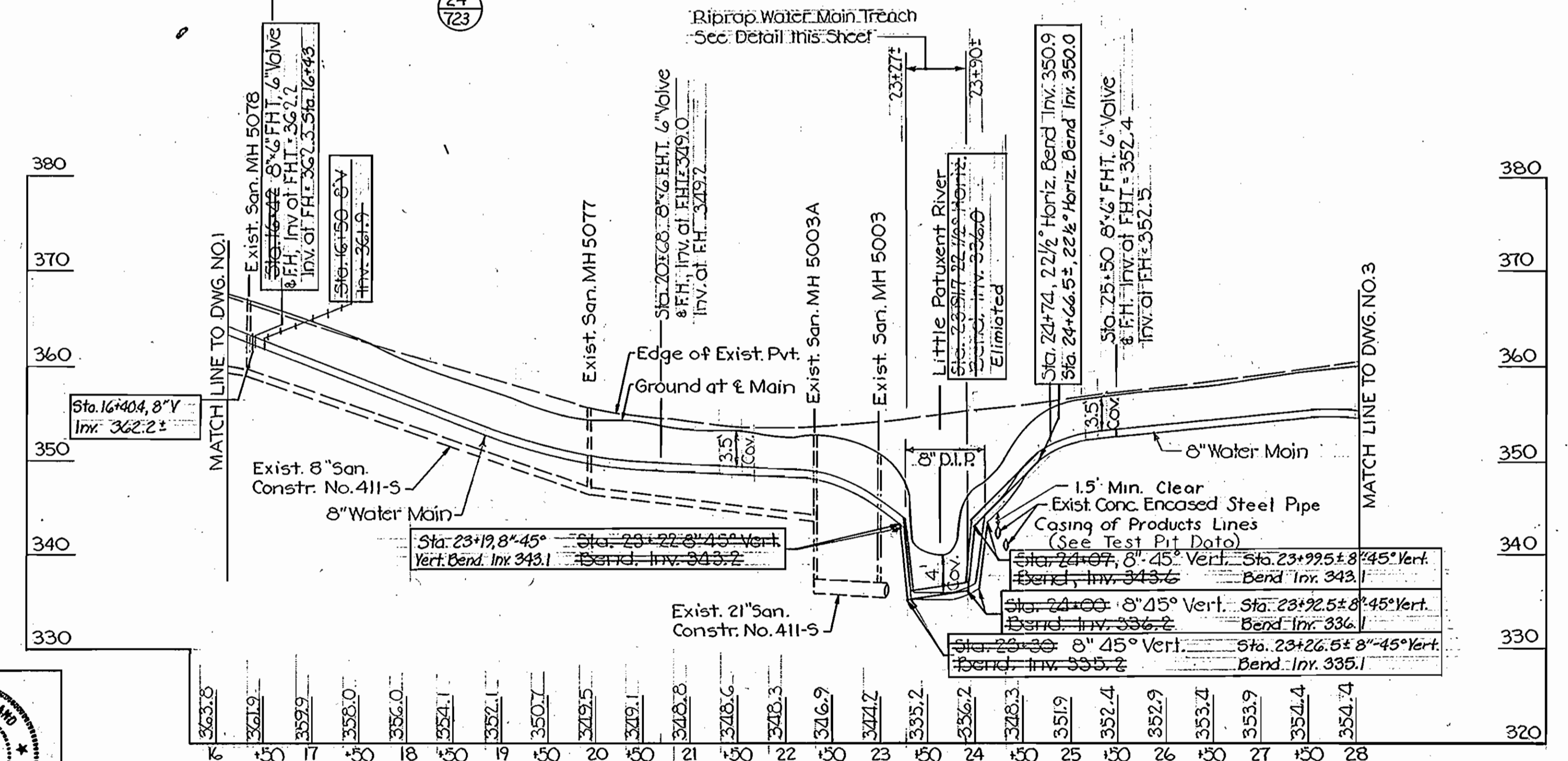
BM. Howard Co. Mon. 3241002
Conc. Mon. at Surface, 9.5' S. of
edge of Pl. 40 East, 11.3' E. of
E. end of conc. bridge. Elev. 354.602



NOTES:
1. The Contractor shall notify the Colonial Pipeline Company 72 hrs. prior to any construction activity in the area of the Colonial Pipelines by calling Colonial's Division Office, Richmond, Virginia, 804-282-9771 or Mr. S. E. Crumlich, P.O. Box 69 Woodbine, Md. 20174



TEST PIT NO. 1 - COLONIAL PIPELINE
Sta. 24+22 ± 18" Conc. Encased 16" Steel Pipe Casing
For 12 1/4" Products Line - Top Elev. 343.20
Sta. 24+32 ± 12" Conc. Encased 8 1/2" Steel Pipe Casing
For 6 1/2" Products Line - Top Elev. 341.60



THE WILSON T. BALLARD COMPANY
CONSULTING ENGINEERS
OWINGS MILLS MARYLAND

DEPARTMENT OF PUBLIC WORKS
HOWARD COUNTY, MARYLAND
DATE: 3-27-78
CHIEF - BUREAU OF ENGINEERING

CONTRACT NO. 767-W
PROJECT NO. W-4-8076

PLAN AND PROFILE
OF 8" WATER MAIN

US ROUTE 40 WATER MAIN
DOGWOOD DRIVE TO THE LITTLE PATUXENT RIVER
ELECTION DISTRICT NO. 2

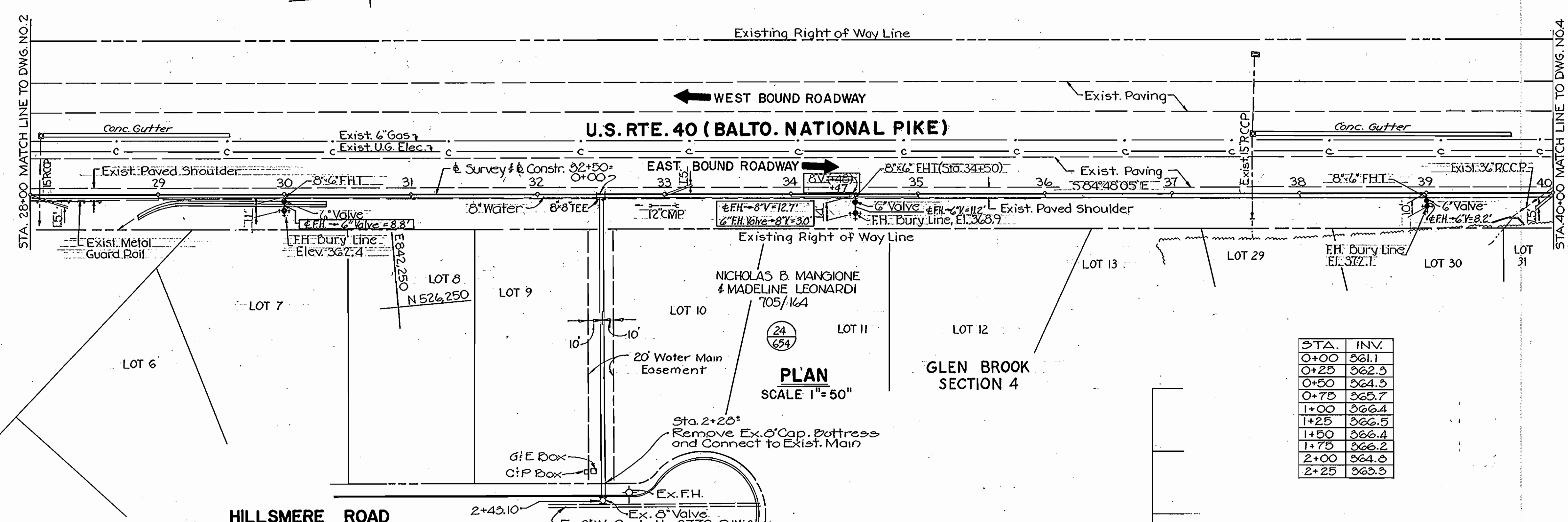
U.S. ROUTE 40
PROJECT NO. W-4-8076
CONTRACT NO. 767-W

DRAWING NO. OF	SCALE AS SHOWN
2 4	

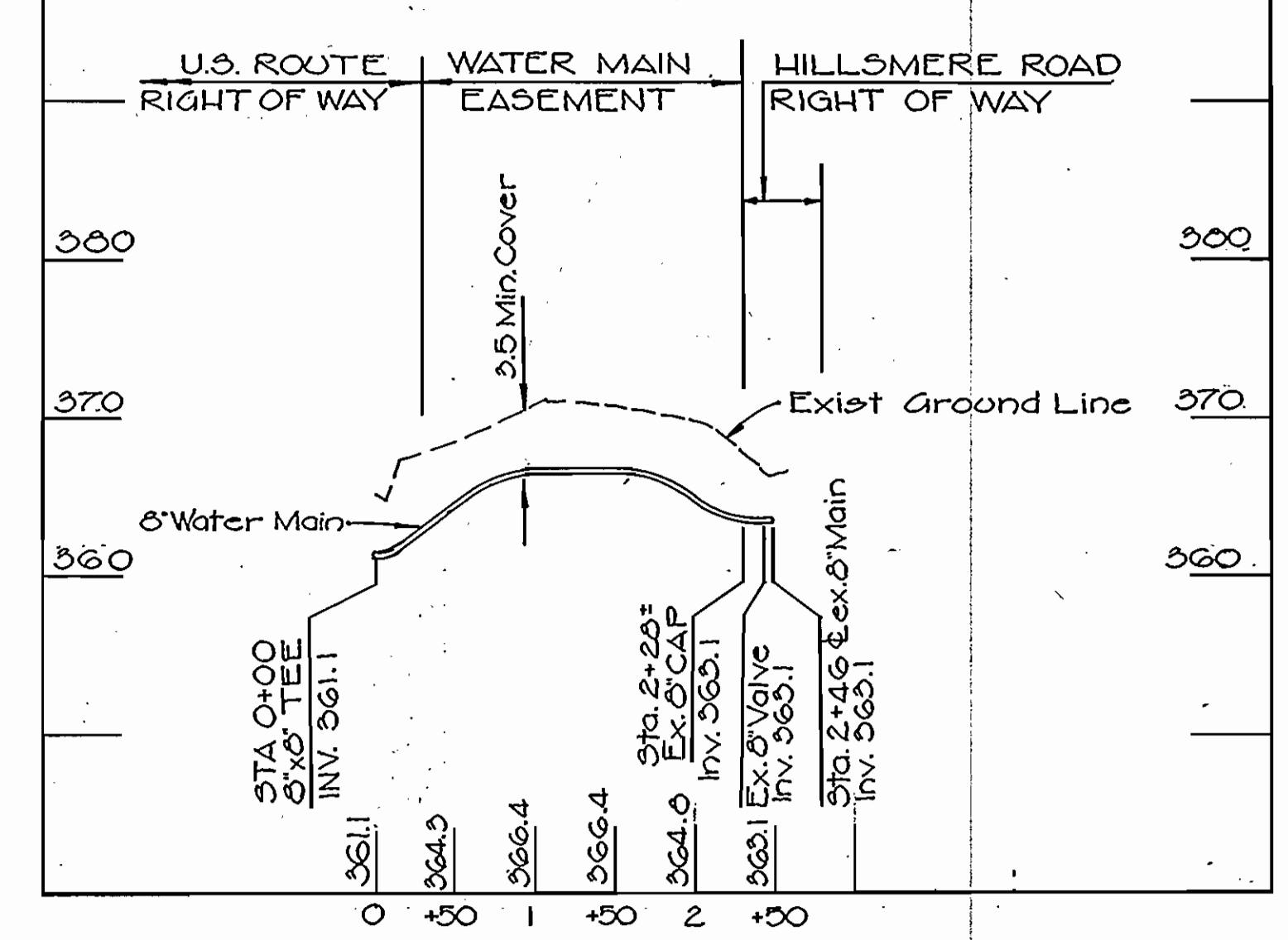
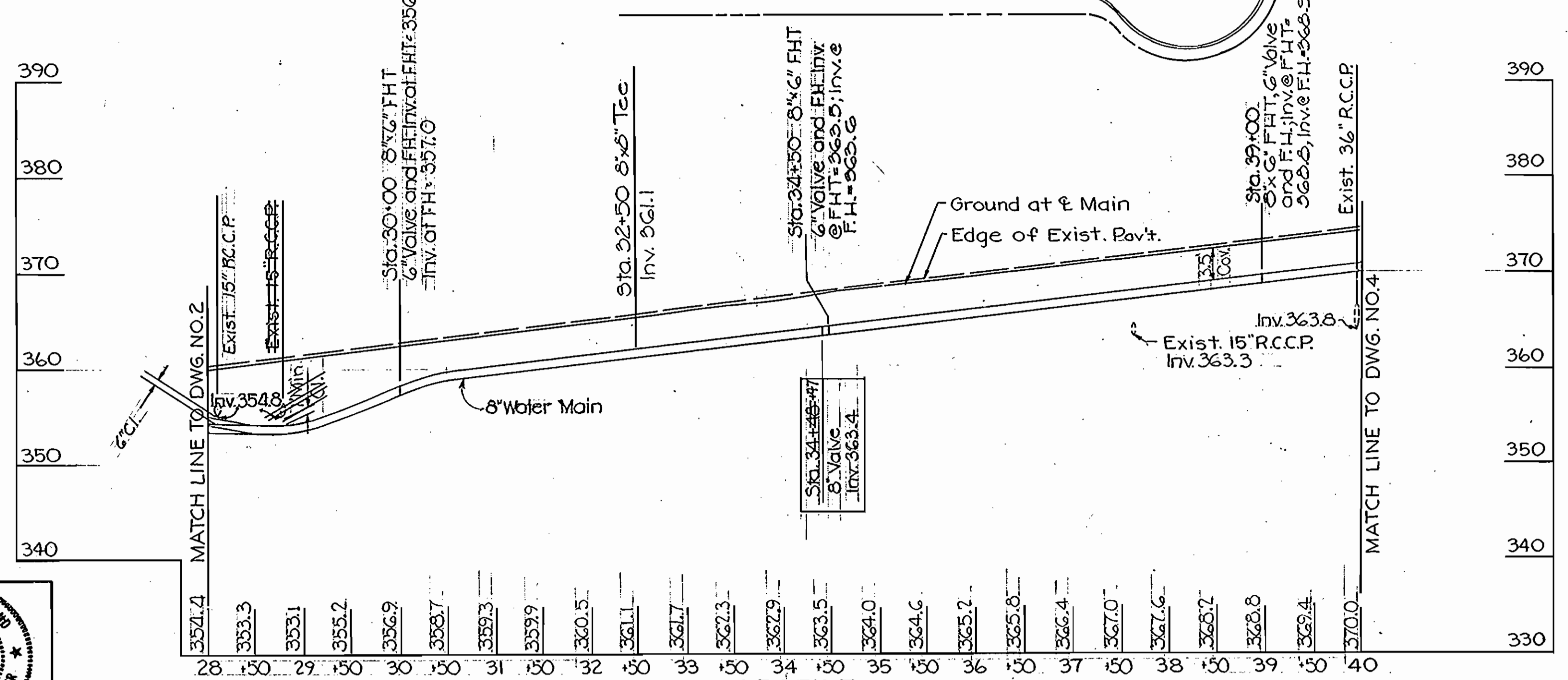
DATE: 7-16-79

WS 767-W/2

B.M. #2 Door spike 15' Sycamore tree, Sta. 31+75, 5' Lt.
Elev. 364.703
B.M. #3 Foot spike 12' Elm tree, Sta. 39+77.5, 49' Lt.
Elev. 374.267



STA.	INV.
0+00	361.1
0+25	362.3
0+50	364.3
0+75	365.7
1+00	366.4
1+25	366.5
1+50	366.4
1+75	366.2
2+00	364.0
2+25	363.3



SCALE: HOR. 1"=100'
VERT. 1"=10'



THE WILSON T. BALLARD COMPANY
CONSULTING ENGINEERS
OWINGS MILLS MARYLAND

DEPARTMENT OF PUBLIC WORKS
HOWARD COUNTY, MARYLAND
3-7-78
DIRECTOR OF PUBLIC WORKS DATE

CONTRACT NO. 767-W
PROJECT NO. W-4-8076

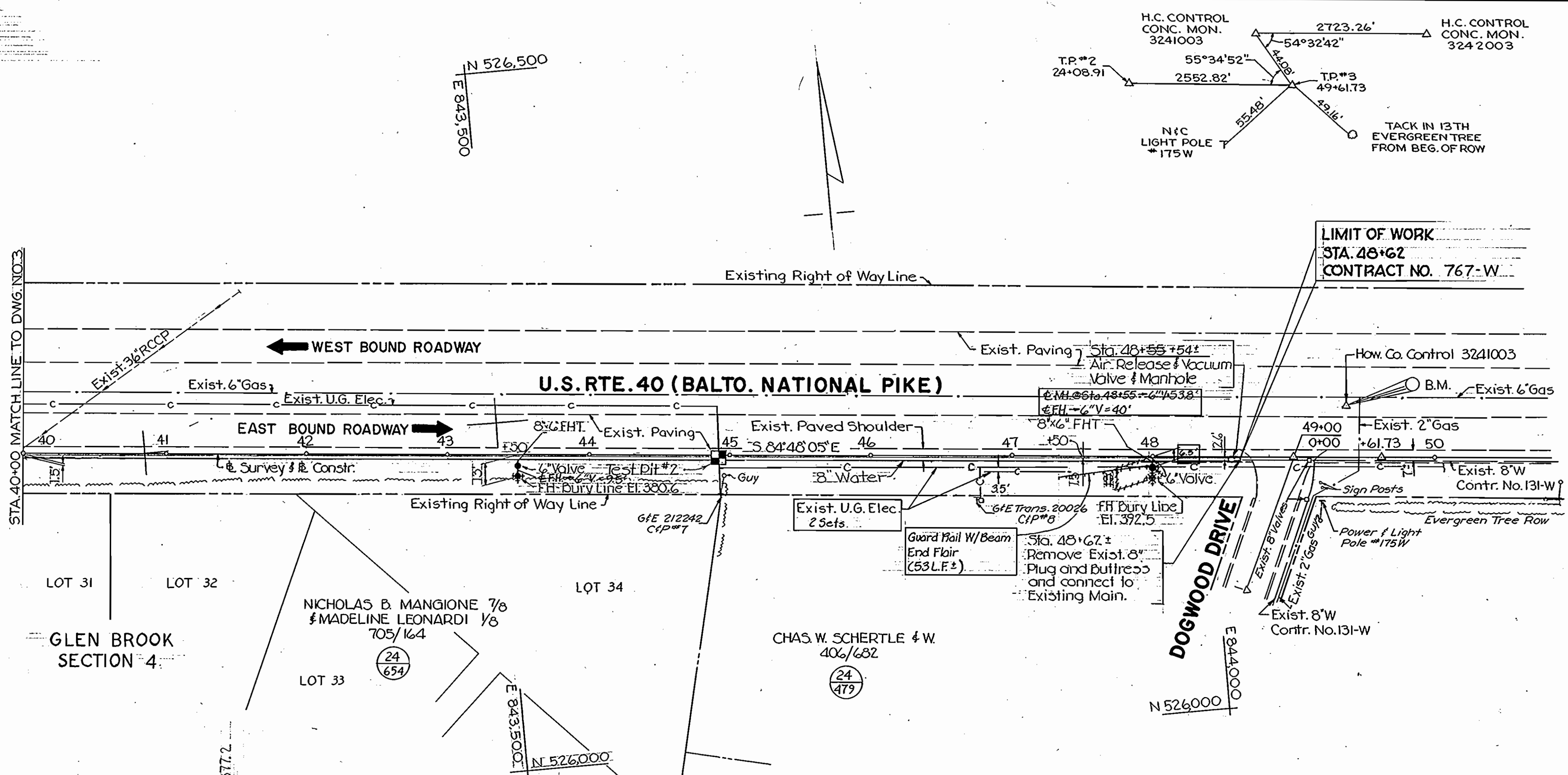
PLAN AND PROFILE
OF 8" WATER MAIN

US ROUTE 40 WATER MAIN
DOGWOOD DRIVE TO THE LITTLE PATUXENT RIVER
ELECTION DISTRICT NO. 2

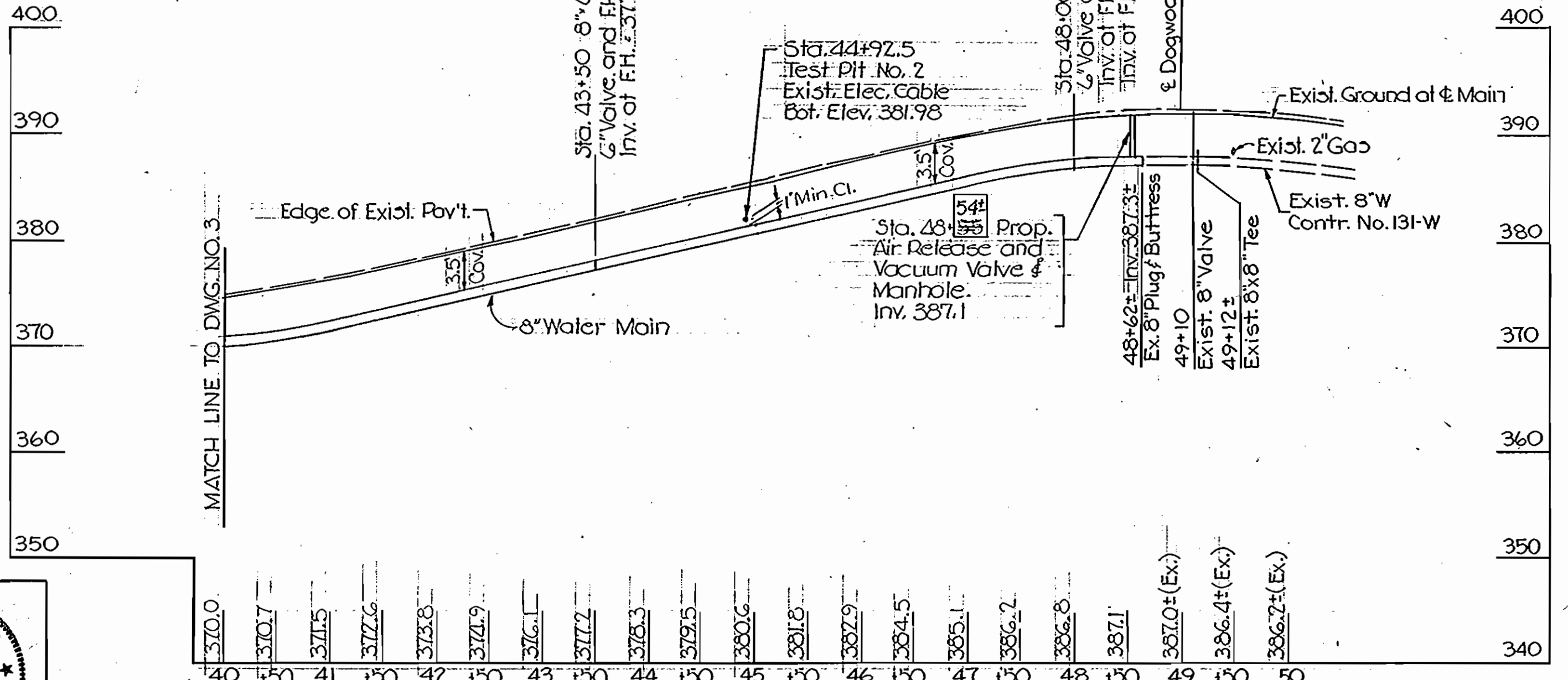
U.S. ROUTE 40
PROJECT NO. W-4-8076
CONTRACT NO. 767-W
DRAWING NO. 3 OF 4
SCALE AS SHOWN
DATE: 7-16-78

WS 767-W/3

B.M. Howard Co. Mon. 3241003
 Conc. Mon. of surface 8" N of
 edge of Rte. 40 East 12" E of E
 edge of crossover of Dogwood
 Drive (Damaged) El. 391.643

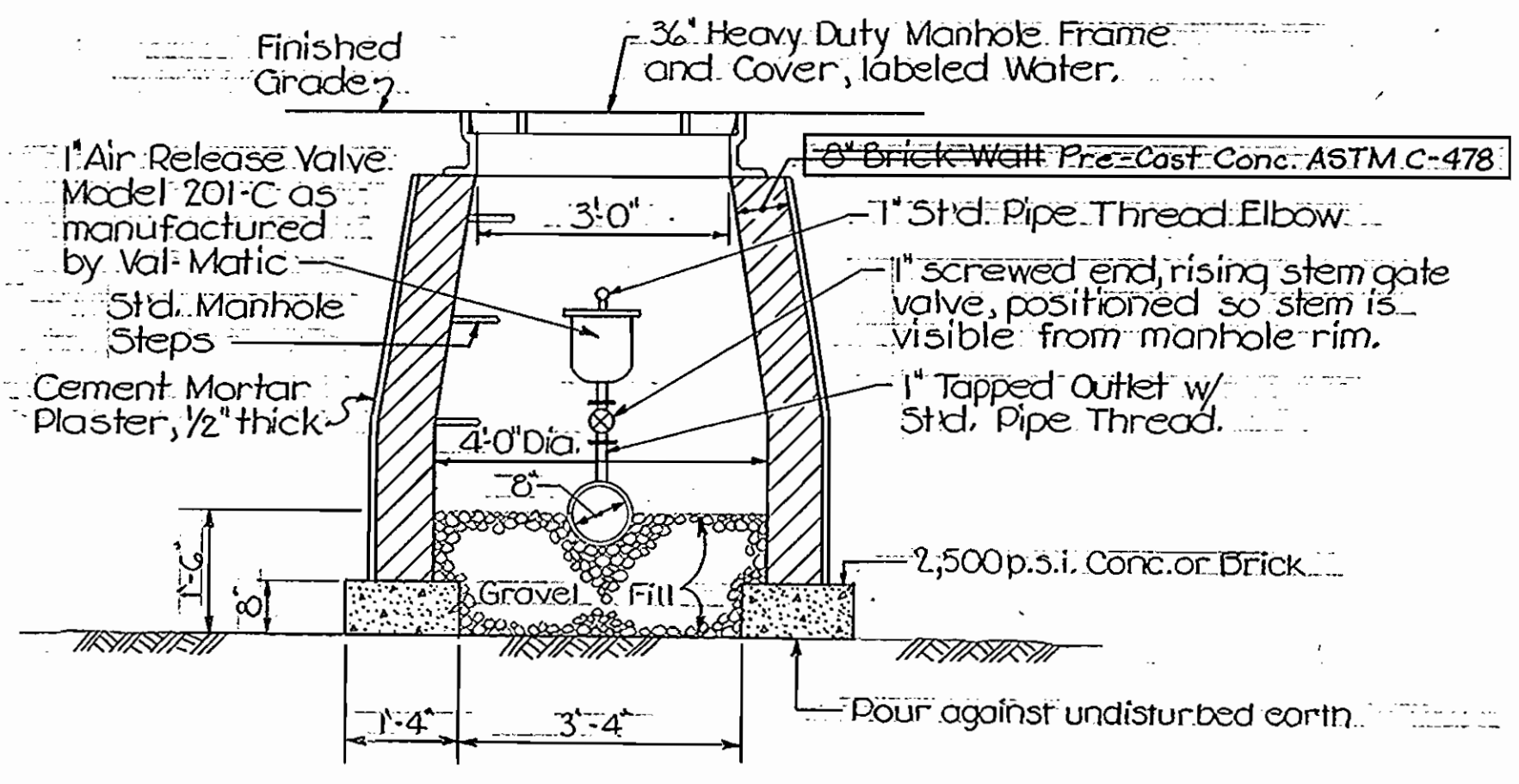


PLAN
 SCALE 1" = 50'



PROFILE
 SCALE: HOR. 1" = 100'
 VERT. 1" = 10'

- NOTES:**
- Manhole frame & cover to be Richard Foundry Corp., Design No. B-2310 or approved equal with 4" dia. holes in cover.
 - Joints shall be provided in the water main within 1 ft. of the exterior walls of the manhole.



AIR RELEASE VALVE AND MANHOLE DETAILS
 SCALE: 1/2" = 1'-0"



THE WILSON T. BALLARD COMPANY
 CONSULTING ENGINEERS
 OWINGS MILLS MARYLAND

DEPARTMENT OF PUBLIC WORKS
 HOWARD COUNTY, MARYLAND
 P. J. Regan 3-7-78
 DIRECTOR OF PUBLIC WORKS DATE

W. O. Filled 3-6-78
 CHIEF - BUREAU OF ENGINEERING DATE

CONTRACT NO. 767-W
 PROJECT NO. W-4-8076

PLAN AND PROFILE
 OF 8" WATER MAIN

US ROUTE 40 WATER MAIN
 DOGWOOD DRIVE TO THE LITTLE PATUXENT RIVER
 ELECTION DISTRICT NO. 2

U.S. ROUTE 40
 PROJECT NO. W-4-8076
 CONTRACT NO. 767-W

DRAWING NO. 4 OF 4
 SCALE AS SHOWN

DATE: 7-16-79

WS 767-W/4