

**VICINITY MAP**  
Scale: 1"=600'

**GENERAL NOTES**

- Approximate locations of existing mains are shown. The Contractor shall take all necessary precautions to protect existing mains and services and maintain uninterrupted supply. Any damage incurred shall be repaired immediately.
- All pipe elevations shown are invert elevations.
- Clear all utilities by a minimum of 6" vertically. Clear all poles 2'-5" minimum or tunnel as required.
- For standard details see Howard County Standards.
- Contractor shall locate existing utilities in advance of construction operations in the vicinity of proposed utilities.
- Contractor shall notify the following utilities or agencies at least five (5) days before starting work shown on these plans:  
 Baltimore Gas and Electric Company - Underground Electric Distribution Engineering - "Damage Control" - 234-5691  
 Baltimore Gas and Electric Company - Underground Gas Distribution Engineering - 559-0100  
 Chesapeake and Potomac Telephone Company - 725-9970  
 Miss Utility - 559-0100
- Buttress or anchor all water main fittings with concrete. All valves shall be strapped to tees in accordance with standard details.
- All water mains to have a minimum of 3.5' cover unless otherwise noted.
- All fire hydrants shall be strapped to the tee and shall be buttressed with concrete in accordance with the standard details. Cost of strapping fire hydrants and valves to be included in the unit price bid for furnishing and installing fire hydrants. Soil around the fire hydrant to be compacted in accordance with Section 5-15 of the Howard County Standard Specifications.
- Bury line elevations on fire hydrants shall be set to the elevations shown on the plans.
- Horizontal and vertical control is based on the Maryland State Grid Coordinate System.

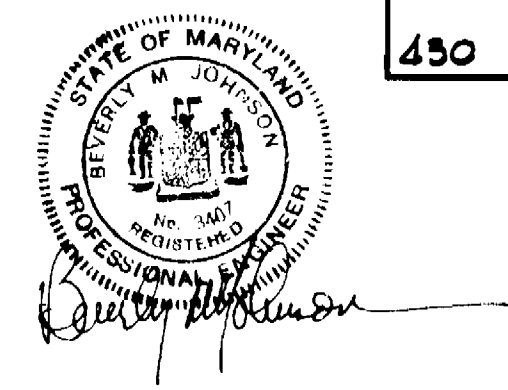
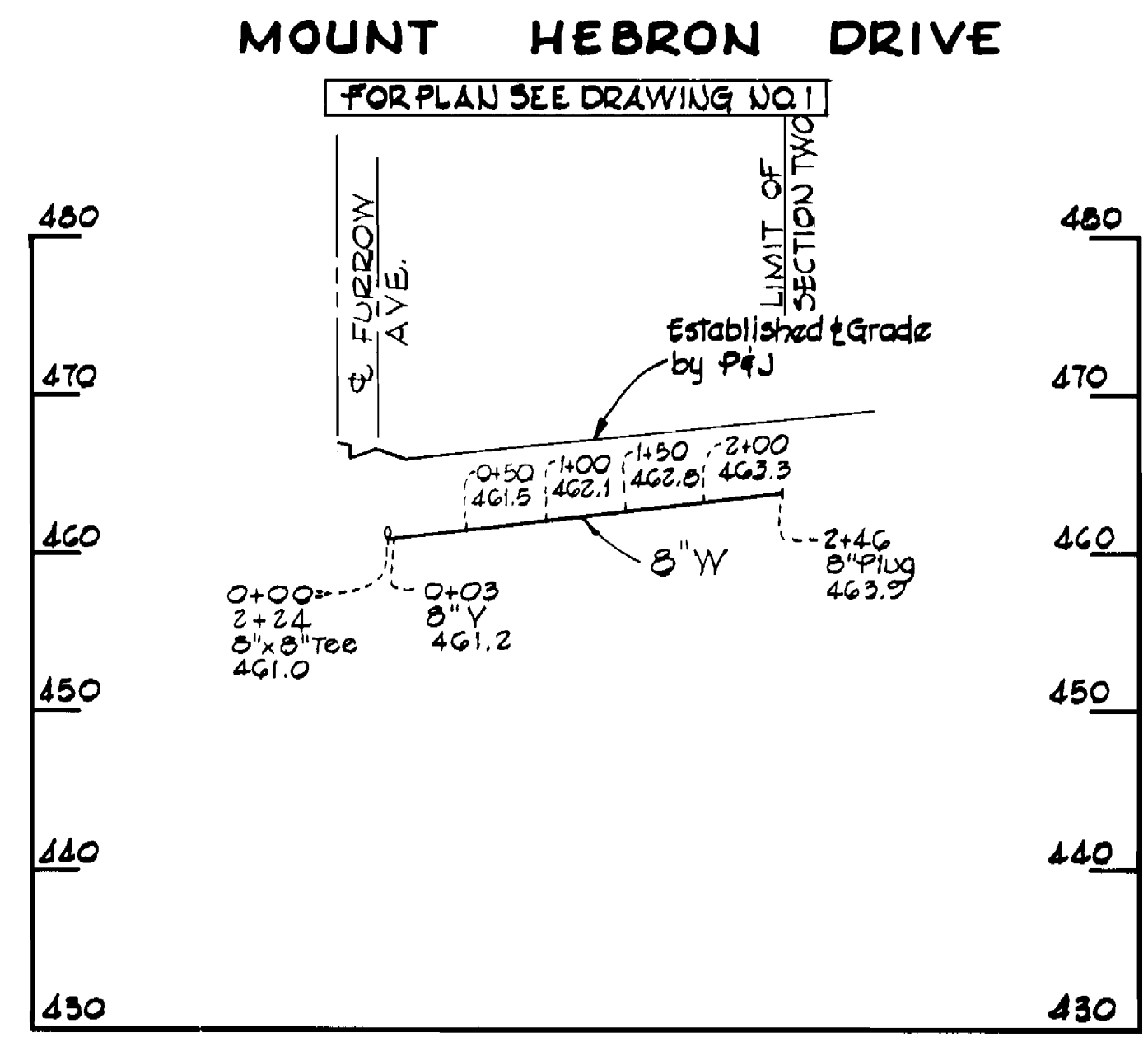
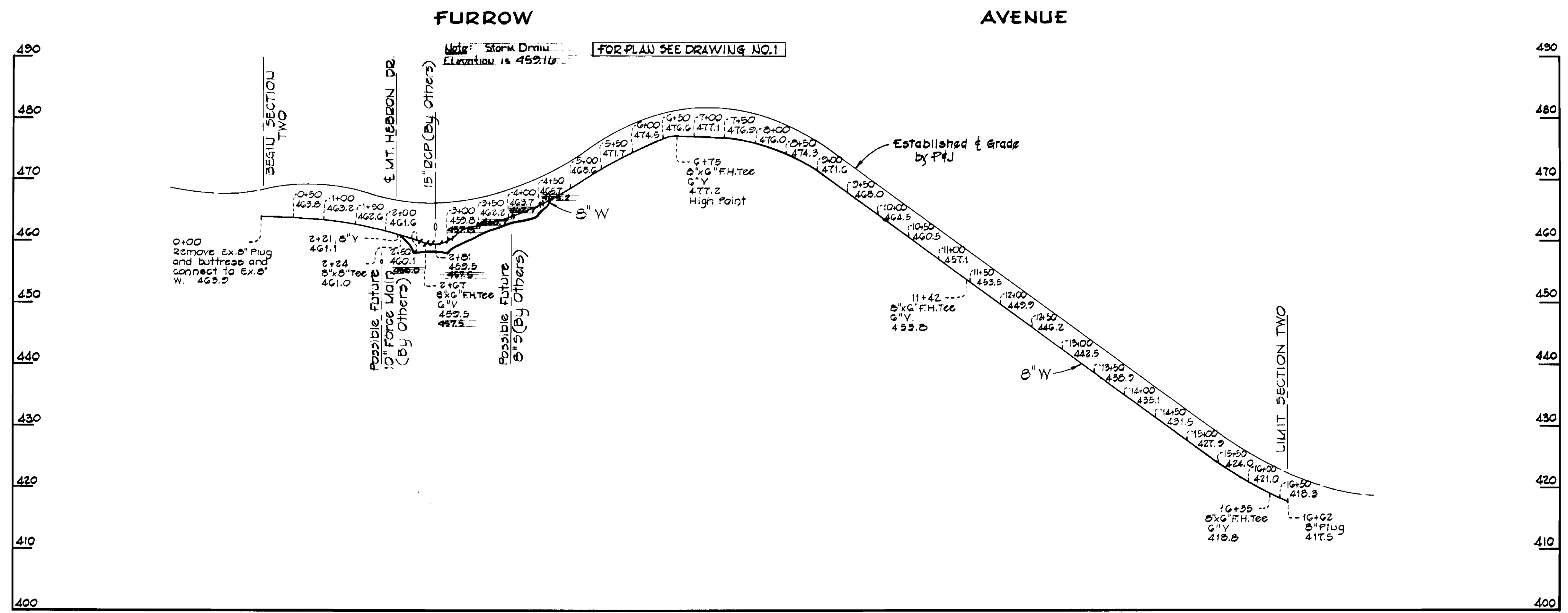
As-Built Notes:  
 8" & 6" DIP - Griffin 20 Amsted  
 C Class 53 & Class 52

QUANTITIES		
Item	Estimated	As-Built
8" Water	1906 L.F.	1906 L.F.
6" Water	71 L.F.	47 L.F.
3/4" W.H.C.	585 L.F.	625.5 L.F.
F.H.	4 Each	4 Each

CONTRACT NO. 766-D-W  
 PATAPSCO PARK ESTATES - SECTION 2  
 WATER MAIN EXTENSION

No.	Date	Revision
1	12-16-77	Rev. Bury Line Elev. on F.H. - Furrrow Ave.

<b>PURDUM &amp; JESCHKE</b> ENGINEERS 1023 N. CALVERT ST. BALTIMORE, MARYLAND	<b>DEPARTMENT OF PUBLIC WORKS</b> HOWARD COUNTY, MARYLAND 9-10-77 DIRECTOR OF PUBLIC WORKS DATE	CONTRACT NO. 766-D-W	PLAN OF WATER MAINS	PATAPSCO PARK ESTATES - SECTION 2 ELECTION DISTRICT NO. 2 HOWARD COUNTY, MARYLAND	DRAWING NO. 1 OF 2	SCALE 1" = 50'	Designed: ROB Drafted: ARZ Checked: TAF
					W.O. 5096-20		



CONTRACT NO. 766-D-W  
 PATAPSCO PARK ESTATES-SECTION 2  
 WATER MAIN EXTENSION

PURDUM & JESCHKE ENGINEERS 1023 N. CALVERT ST. BALTIMORE, MARYLAND	DEPARTMENT OF PUBLIC WORKS HOWARD COUNTY, MARYLAND Director of Public Works: <i>P. J. [Signature]</i> DATE: 12-14-77 Chief Bureau of Engineering: <i>W. O. [Signature]</i> DATE: 12-17-77	CONTRACT NO. 766-D-W	PROFILE OF WATER MAINS	PATAPSCO PARK ESTATES SECTION 2 ELECTION DISTRICT NO. 2 HOWARD COUNTY, MARYLAND	DRAWING NO. 2	SCALE Hor. 1"=100' Vert. 1"=10'	Designed RDB
					OF 2		Drafted ARZ Checked TAF