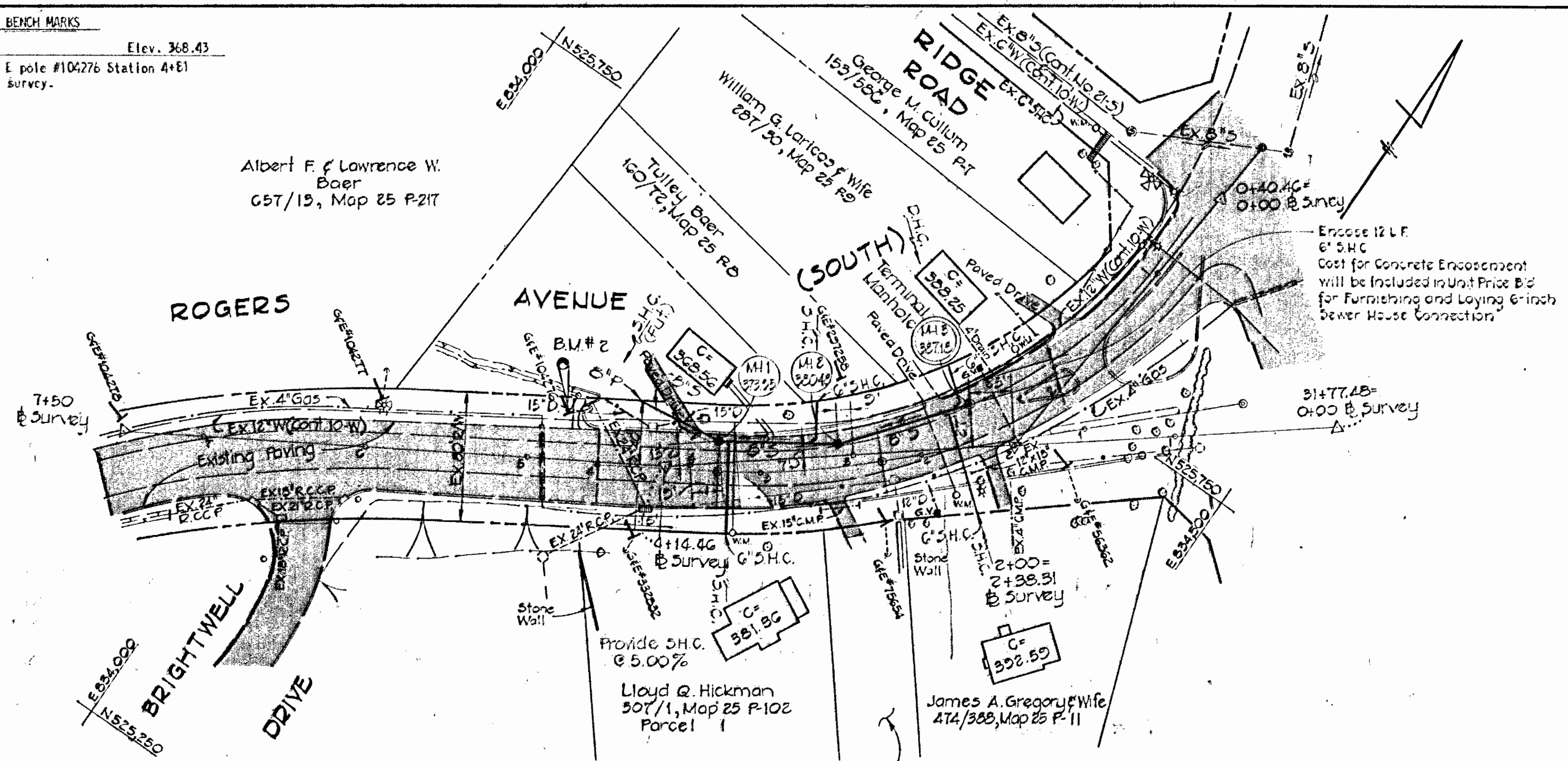
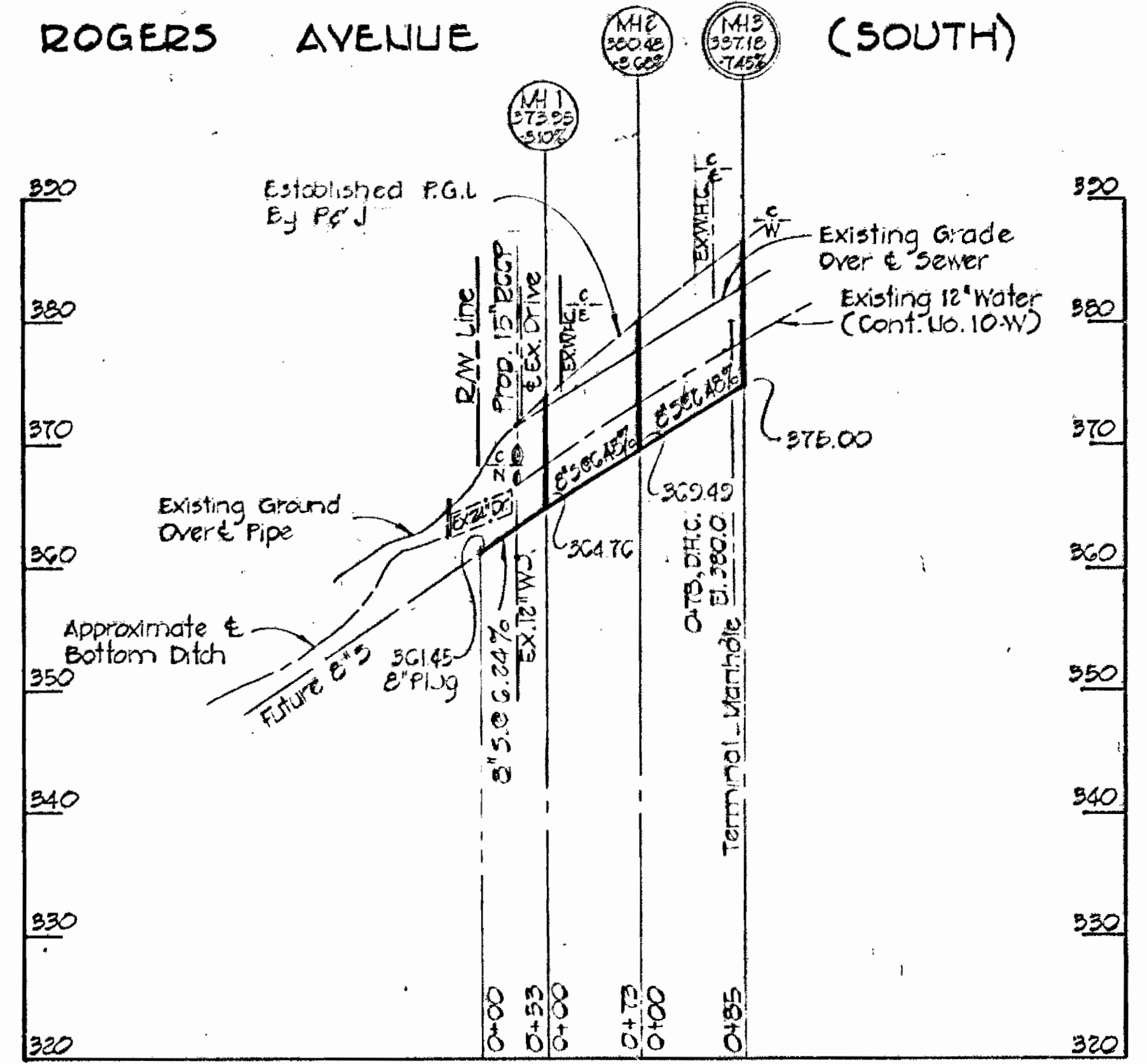


BENCH MARKS
 Bench Mark #2 Elev. 368.43
 4 Nails in G & E pole #104276 Station 4+E1
 Right baseline survey.

Albert F. & Lawrence W. Baer
 657/19, Map 25 P-217

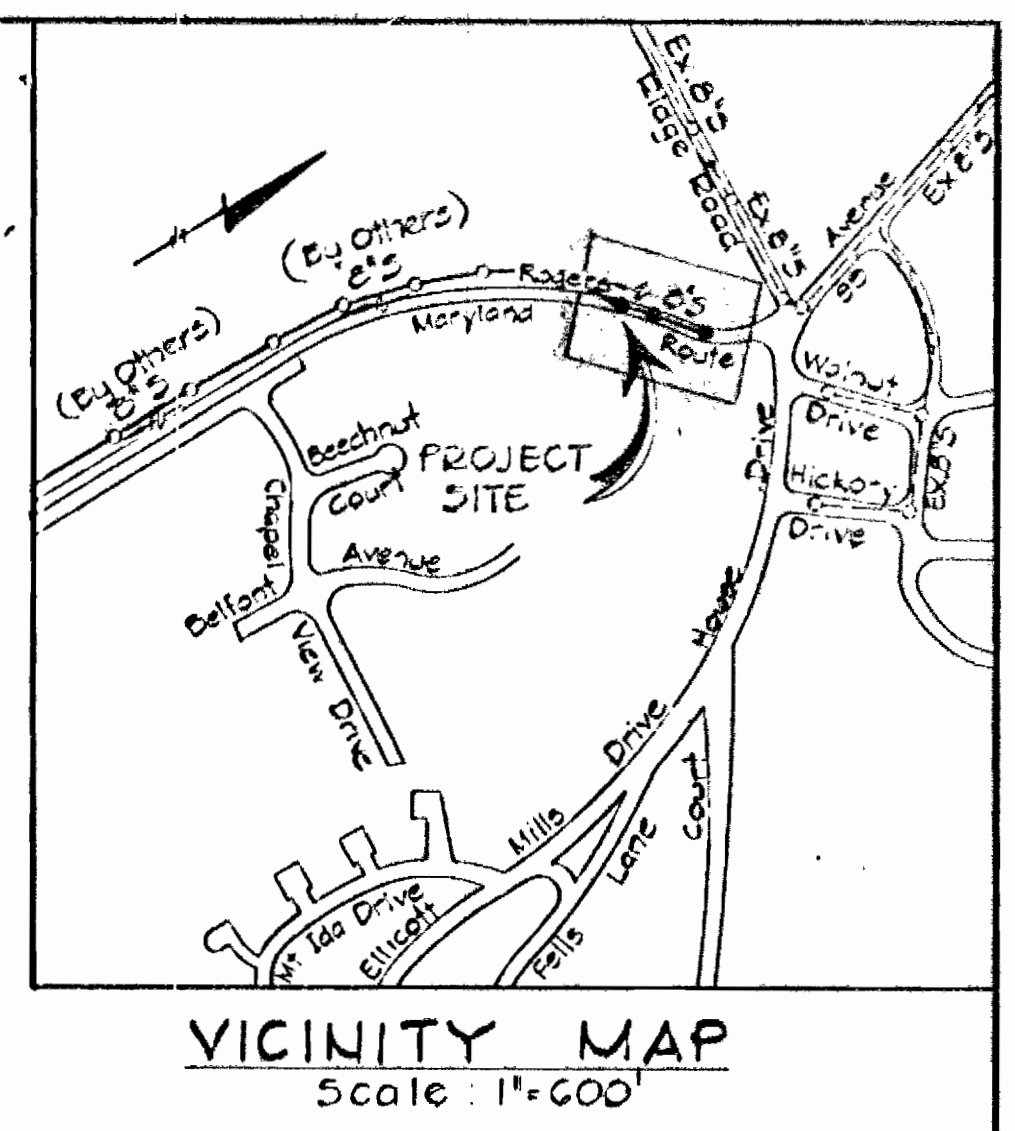


PLAN
 Scale: 1"=50'
 Lloyd Q. Hickman
 507/1, Map 25 P-102
 Parcel 1



PROFILE
 Scale: Horz. 1"=100'
 Vert. 1"=10'

QUANTITIES		
ITEM	ESTIMATED	AS-BUILT
8" Sewer	211 L.F.	L.F.
6" Sewer	175 L.F.	L.F.
Manholes	32.0 V.F.	V.F.



GENERAL NOTES

- Approximate locations of existing utilities are shown. The Contractor shall take all necessary precautions to protect existing utilities and maintain uninterrupted service. Any damage incurred shall be repaired immediately to the satisfaction of the Engineer by the Contractor at the Contractor's expense.
- All pipe elevations shown are \odot invert elevations.
- The Contractor shall locate existing utilities a minimum of two weeks in advance of construction operations in the vicinity of sewers. Cost shall be included in the unit prices bid for excavation and backfill for sewer mains.
- For details not shown on the construction drawings see Standard Details bound in the Specifications.
- Clear all utilities by a minimum of 6". Clear all utility poles by 2' 0" minimum or tunnel as required. Any costs incurred to the Contractor for tunneling or bracing at poles shall be included in the unit prices bid for excavation and backfill for sewer mains.
- Contractor shall notify the following utilities or agencies at least five (5) days before starting work shown on these plans:
 Baltimore Gas & Electric Company - Underground Electric Distribution Engineering "Damage Control" 234-5691
 Baltimore Gas & Electric Company - Underground Gas Distribution Engineering 559-0100
 Chesapeake and Potomac Telephone Company 393-3636
 Miss Utility 301-393-3648
- Place regulation "Men Working" and warning signs as required to comply with Maryland State Highway Administration Manual of Traffic Control for Highway Construction and Maintenance Operations.
- All sewer mains shall be C.S.P.X., V.C.P.X., or A.C.P. Class 2400 unless otherwise noted.
- The Contractor shall provide a joint in each sewer main within 2'-0" of exterior manhole walls.
- All manholes shall be 4'-0" inside diameter, unless otherwise noted.
- Horizontal and Vertical controls are based on the Maryland State Grid Coordinate System.

Dwight M. Johnson

CONTRACT NO. J-4-4006
 ROGERS AVENUE SEWER MAIN
 CAPITAL PROJECT S-7-6087 PHASE I

PURDUM & JESCHKE ENGINEERS 1023 N. CALVERT ST. BALTIMORE, MARYLAND	DEPARTMENT OF PUBLIC WORKS HOWARD COUNTY, MARYLAND 11-15-74 DIRECTOR OF PUBLIC WORKS DATE	CONTRACT NO. J-4-4006 753-5 CAPITAL PROJECT NO. S-7-6087	PLAN AND PROFILE SEWER MAIN	ROGERS AVENUE SEWER MAIN SECOND ELECTION DISTRICT HOWARD COUNTY, MARYLAND	DRAWING NO. 135 OF 135	SCALE As Shown	DESIGNED BY CHECKED BY DATE
					DATE	DATE	