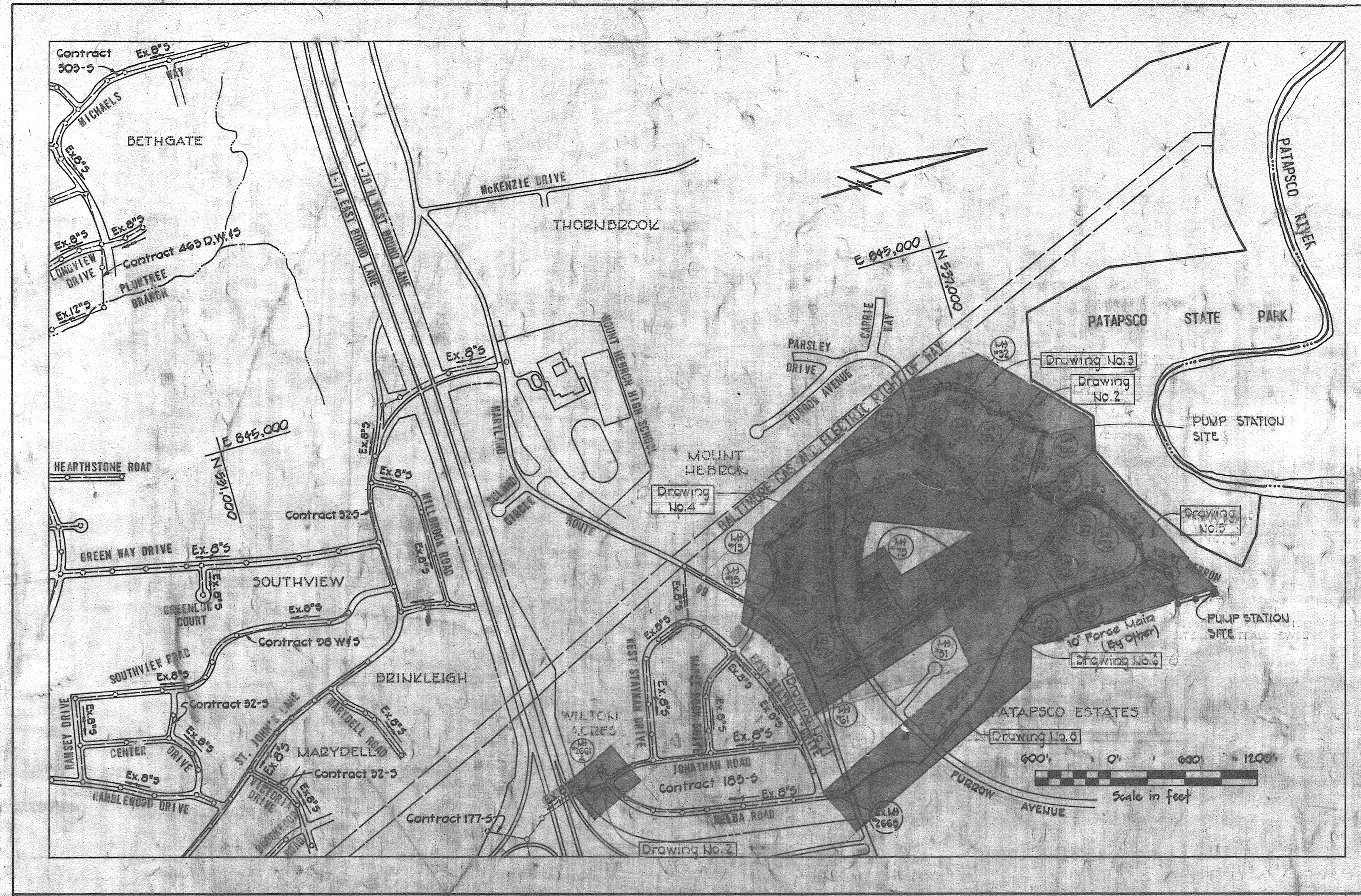


Item	QUANTITIES	
	Estimated	As-Built
10" Sewer	50 L.F.	25 L.F.
8" Sewer	10540 L.F.	9907 L.F.
6" Sewer	1950 L.F.	2800 L.F.
10" Force Main	2375 L.F.	2313 L.F.
8" Force Main	275 L.F.	275 L.F.
Manholes	545 V.F.	549 V.F.



- GENERAL NOTES**
1. Approximate location of existing utilities is shown. The Contractor shall take all necessary precautions to protect existing utilities and to maintain uninterrupted service. Any damage incurred shall be repaired immediately to the satisfaction of the Engineer by the Contractor at the Contractor's expense.
  2. The Contractor shall locate existing utilities a minimum of two weeks in advance of construction operations in vicinity of utilities. Cost shall be included in the unit prices bid for excavation and backfill for mains.
  3. Contractor shall notify the following utilities or agencies at least five (5) days before starting work shown on these plans:  
 Miss Utility (Collect) 1-359-0100  
 Baltimore Gas & Electric Company - Underground Electric Distribution Engineering "Damage Control" Mr. G. J. Zeller, Manager - 234-5891  
 Baltimore Gas & Electric Company - Underground Gas Distribution Engineering, Mr. Bell - 234-5533  
 Chesapeake and Potomac Telephone Co. - 725-0976  
 State Highway Administration 531-8533
  4. Clear all utilities by a minimum of 6". Clear all poles 2'-0" minimum or tunnel as required. Cost for tunneling or bracing at poles shall be included in the unit prices bid for excavation and backfill for sewer mains.
  5. All pipe elevations shown are invert elevations.
  6. All manholes shall be 4'-0" inside diameter.
  7. The Contractor shall provide a pipe joint in each sewer main within 2'-0" of exterior of manhole walls.
  8. Watertight manhole frame and cover to be used where indicated on drawings Standard Details S-12 (MCR-63A). Where watertight manhole frame and cover is used, set top of frame 1'-6" above finished grade.
  9. For details not shown on the Contract Drawings see Standard Details bound in the specifications.
  10. Trees are to be protected from damage to the maximum extent.
  11. Contractor shall remove trees, stumps and roots along line of excavation as directed by the Engineer. Payment for such removal shall be included in the unit price bid for excavation and backfill for sewer mains.
  12. Place regulation "Men Working" and warning signs as required to comply with Maryland State Highway Administration Manual of Traffic Control for Highway Construction and Maintenance Operations.
  13. All sewer mains shall be C.S.P.X., V.C.P.X., or A.C.P. Class 2400, unless otherwise noted.
  14. Force mains shall be ductile iron from Class B in accordance with Section 8 of the specifications. Force mains shall have a minimum of 4 feet of cover.
  15. Buttress or anchor all force main fittings with concrete. For details see Standard Details bound in the Specifications.
  16. Horizontal and vertical controls are based on the Maryland State Grid Coordinate System.

**CAPITAL PROJECT S-4-6037**  
**CONTRACT NO. 744-S**  
**MOUNT HEBRON SANITARY SEWERS**  
**HOWARD COUNTY, MARYLAND**  
**DEPARTMENT OF PUBLIC WORKS**



OCTOBER 2020 INSTALL COMBINATION AIR VALVES - DW 000

<b>PURDUM &amp; JESCHKE</b> ENGINEERS 1023 N. CALVERT ST. BALTIMORE, MARYLAND	DEPARTMENT OF PUBLIC WORKS HOWARD COUNTY, MARYLAND DIRECTOR OF PUBLIC WORKS DATE: 8-20-22 CHIEF BUREAU OF ENGINEERING DATE: W. O. Libart 8-29-22	CONTRACT NO. 744-S CAPITAL PROJECT NO. S-4-6037	LOCATION MAP OF SANITARY SEWERS	MOUNT HEBRON SEWER MAINS ELECTION DISTRICT NO. 2 HOWARD COUNTY, MARYLAND	DRAWING NO. 1 OF 14	SCALE As Shown	MAPS 234-42 235-41 235-42
					W.O. 0362-10		

WS 744-S/1

0801 31 NOV 1976 57

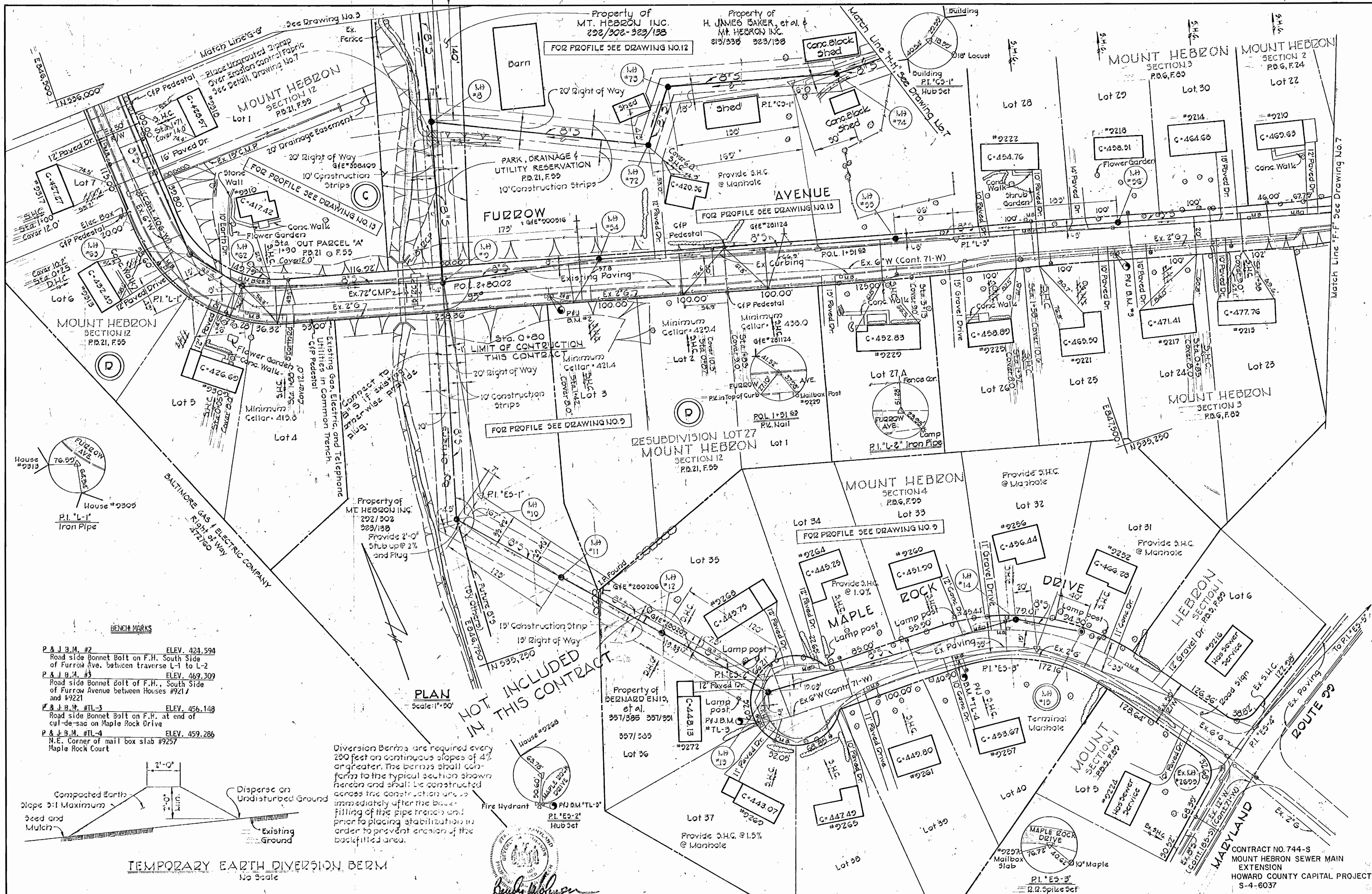










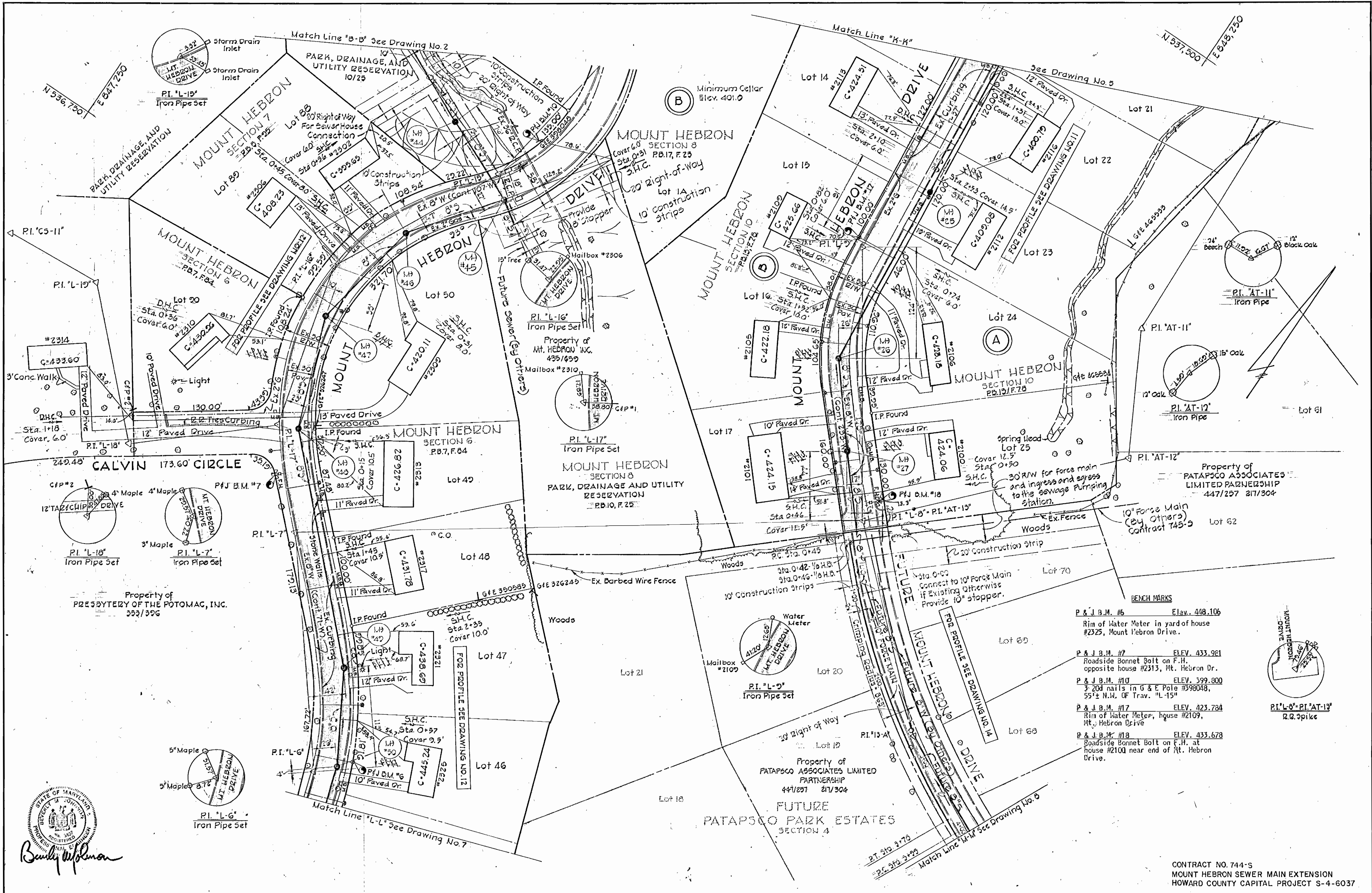


<b>PURDUM &amp; JESCHKE</b> ENGINEERS 1023 N. CALVERT ST. BALTIMORE, MARYLAND	<b>DEPARTMENT OF PUBLIC WORKS</b> HOWARD COUNTY, MARYLAND 8-10-77 DIRECTOR OF PUBLIC WORKS DATE	CONTRACT NO. 744-S CAPITAL PROJECT NO. S-4-6037	<b>PLAN AND DETAILS</b> MOUNT HEBRON SEWER MAINS	<b>MOUNT HEBRON SEWER MAINS</b> ELECTION DISTRICT NO.2 HOWARD COUNTY, MARYLAND	<b>DRAWING</b> NO. 4 OF 14 SCALE As Shown Designed: REP Drafted: ARZ Checked: TAF
--	--	--	---	--	--









- BENCH MARKS**
- P & J B.M. #6 ELEV. 448.106  
Rim of Water Meter in yard of house #2325, Mount Hebron Drive.
  - P & J B.M. #7 ELEV. 433.981  
Roadside Bonnet Bolt on F.H. opposite house #2313, Mt. Hebron Dr.
  - P & J B.M. #10 ELEV. 399.800  
3/20d nails in G & E Pole #398048, 55'± N.W. OF Trav. "L-15"
  - P & J B.M. #17 ELEV. 423.784  
Rim of Water Meter, house #2109, Mt. Hebron Drive
  - P & J B.M. #18 ELEV. 433.678  
Roadside Bonnet Bolt on F.H. at house #2100 near end of Mt. Hebron Drive.

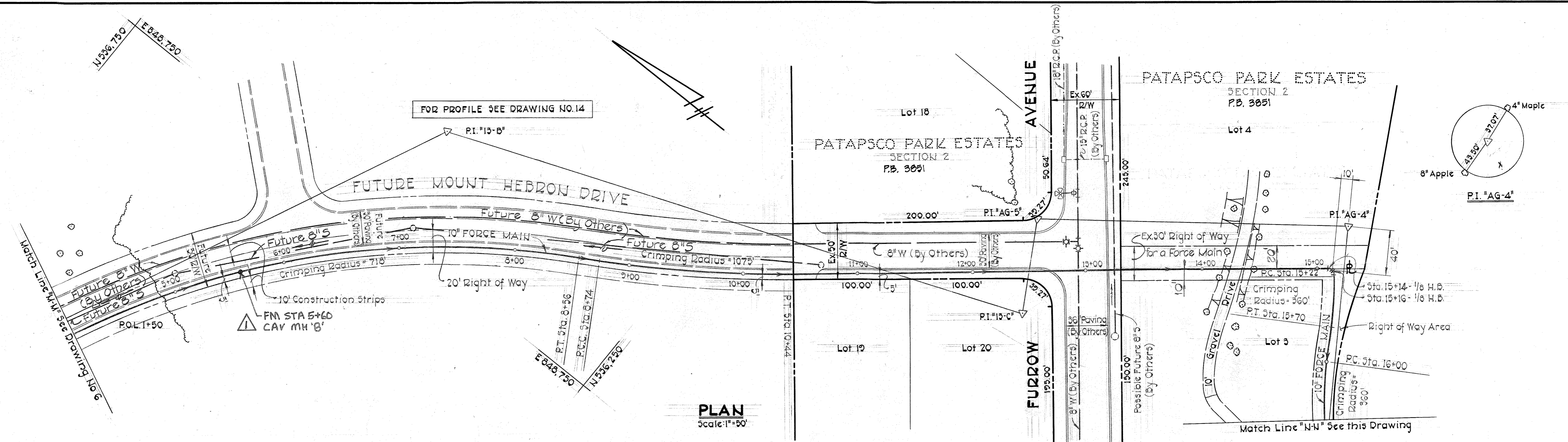
CONTRACT NO. 744-S  
MOUNT HEBRON SEWER MAIN EXTENSION  
HOWARD COUNTY CAPITAL PROJECT S-4-6037

<b>PURDUM &amp; JESCHKE</b> ENGINEERS 1023 N. CALVERT ST. BALTIMORE, MARYLAND <i>Beadly W. Johnson</i>	<b>DEPARTMENT OF PUBLIC WORKS</b> HOWARD COUNTY, MARYLAND <i>P.J. Ryan 8-30-77</i> <i>W.O. Elbert 8-29-77</i> DIRECTOR OF PUBLIC WORKS DATE CHIEF-BUREAU OF ENGINEERING DATE	CONTRACT NO. 744-S CAPITAL PROJECT NO. S-4-6037	<b>PLAN</b> MOUNT HEBRON SEWER MAINS	<b>MOUNT HEBRON SEWER MAINS</b> ELECTION DISTRICT NO. 2 HOWARD COUNTY, MARYLAND	<b>DRAWING</b> NO. 6 OF 14 <b>SCALE</b> 1"=50' Designed-REP Drafted-ARZ Checked-TAF
--	---	--	---	---	--

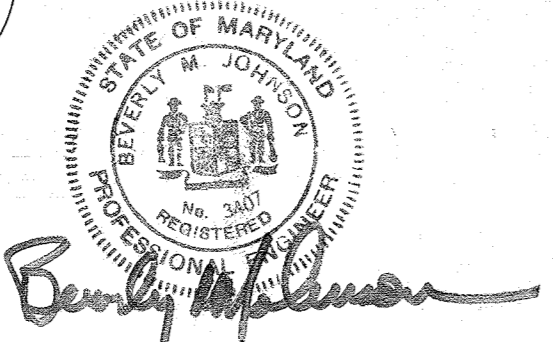
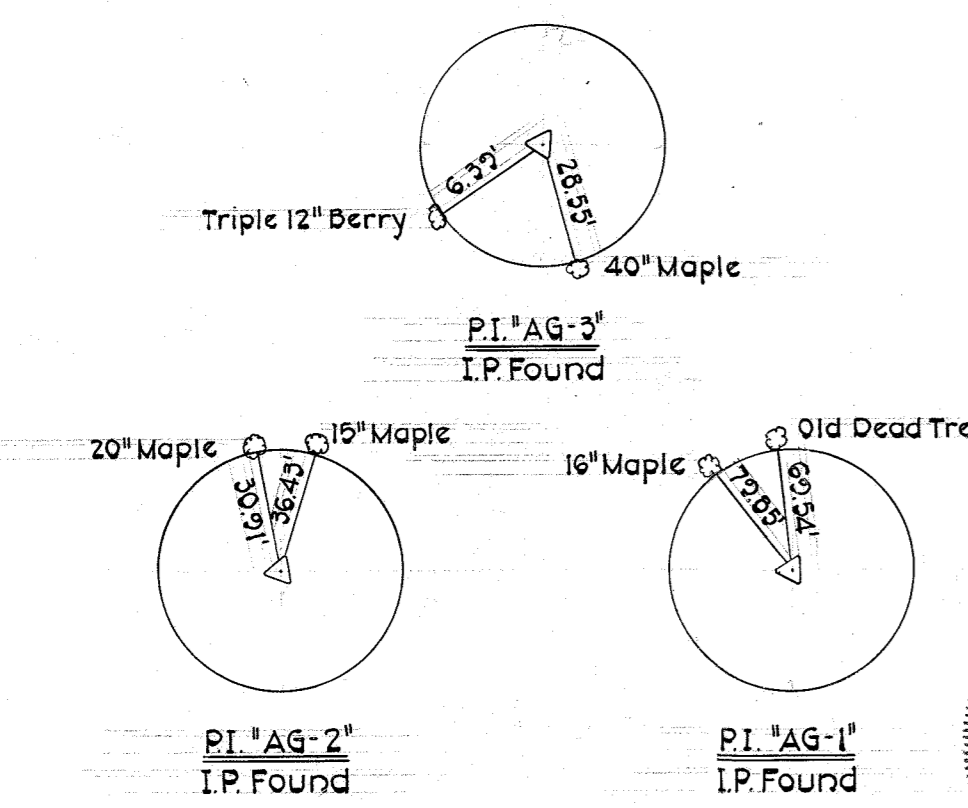
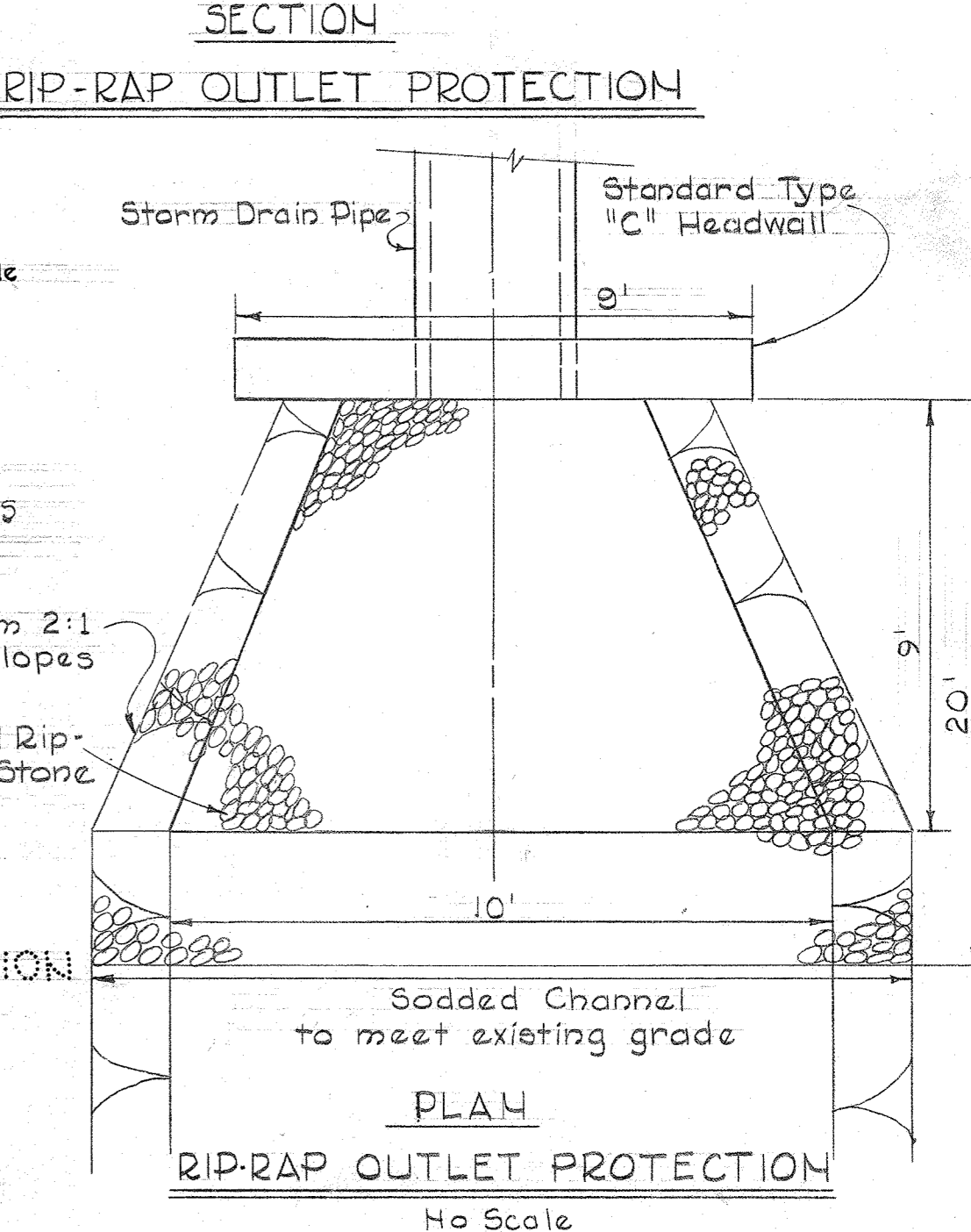
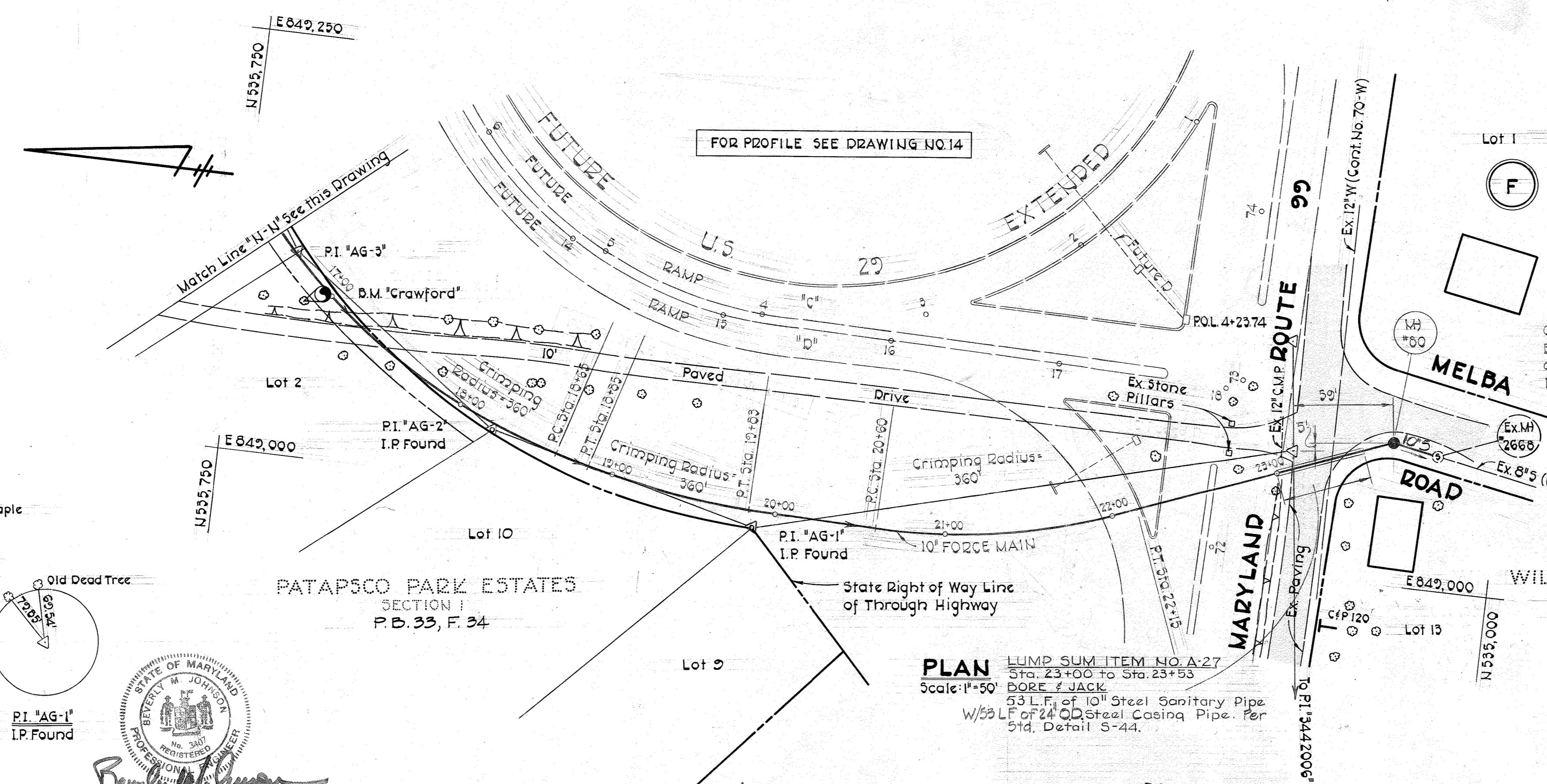
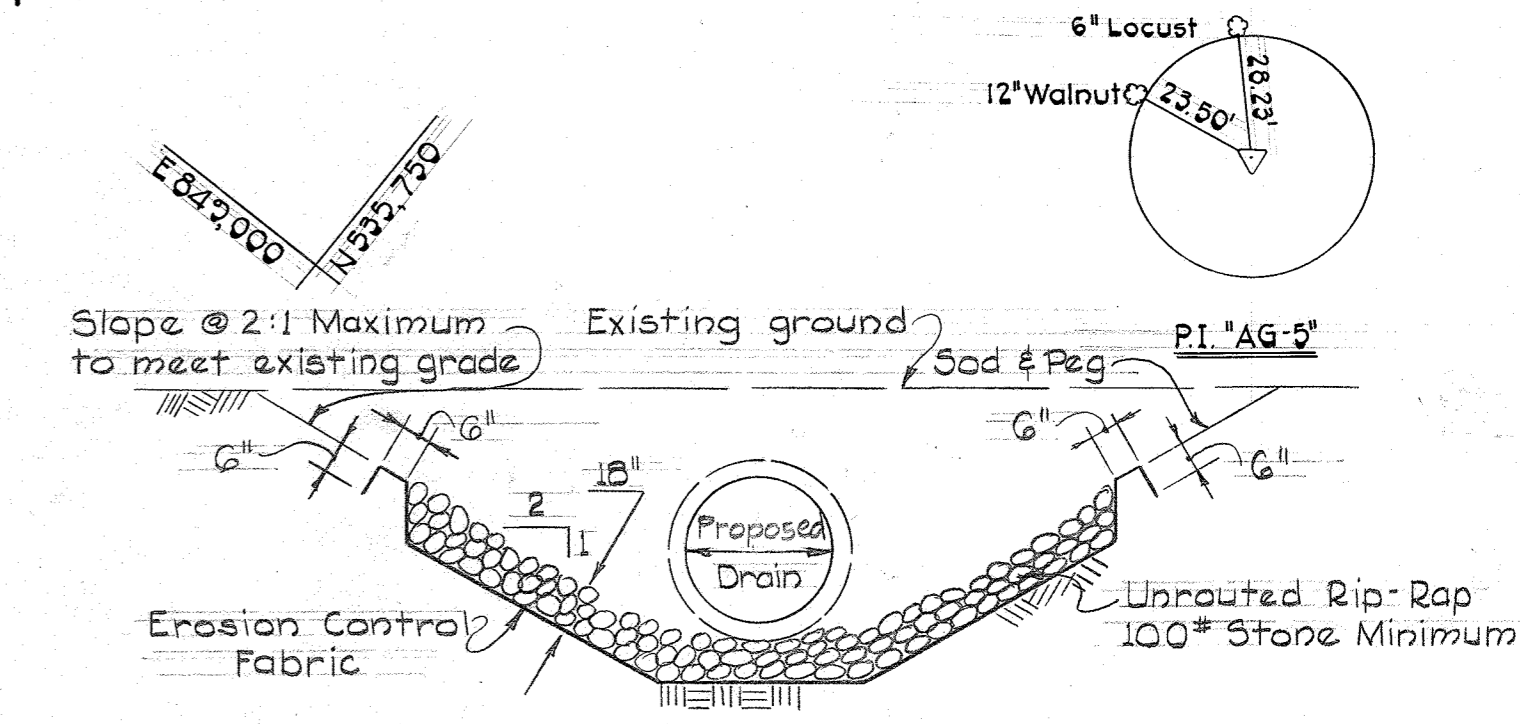








B.M. "Crawford" Elev. 464.57  
 R.R. spike set in 30" Maple 28' N.W. of  
 P.I. "AG-3".



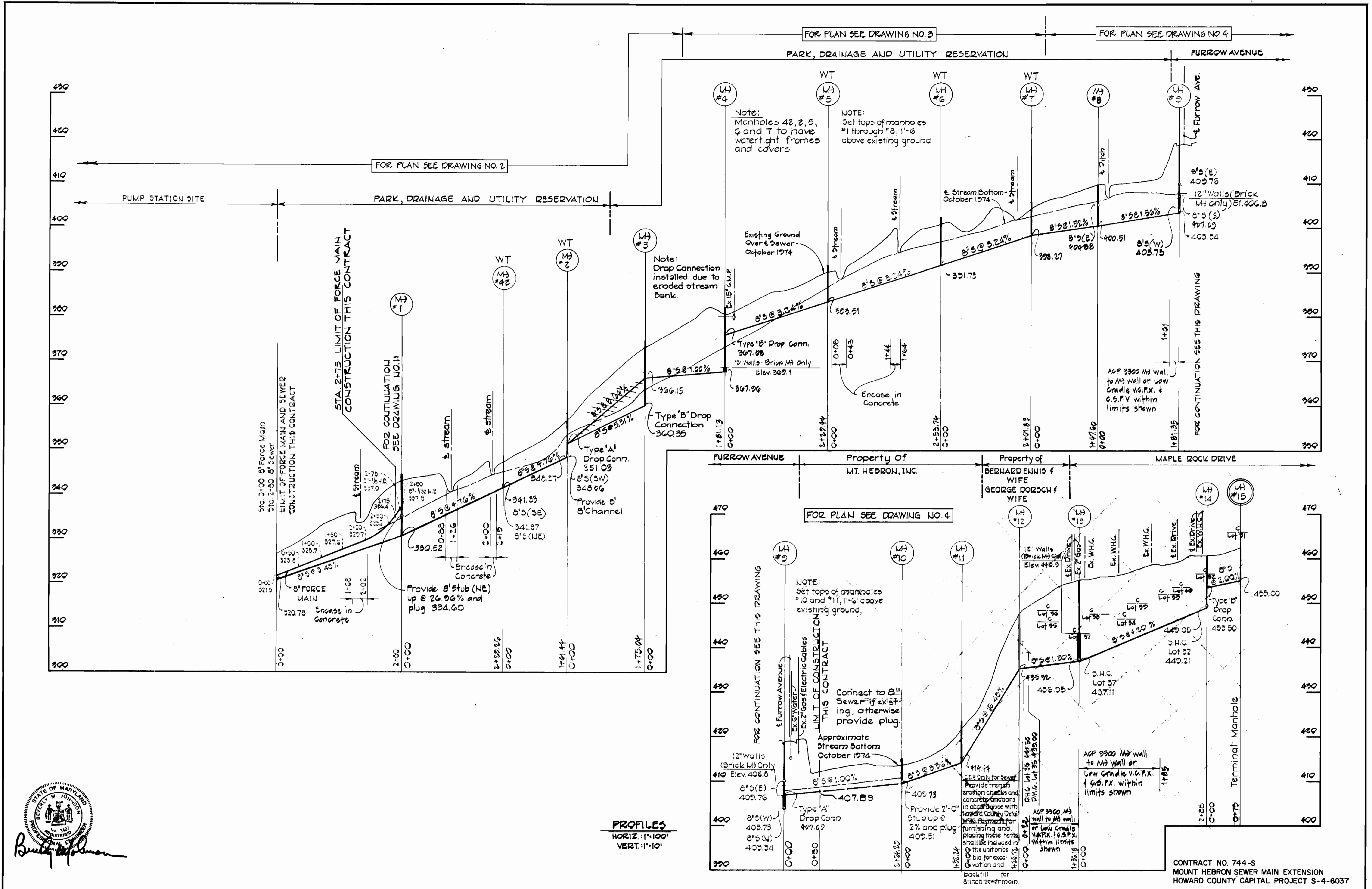
OCTOBER 2010 INSTALL COMBINATION AIR VALVE DW-100

WS 744-S/8

AS BUILT - JAN 11 1980

PURDUM & JESCHKE ENGINEERS 1023 N. CALVERT ST. BALTIMORE, MARYLAND	DEPARTMENT OF PUBLIC WORKS HOWARD COUNTY, MARYLAND <i>P. J. Regan</i> 8-30-11 DIRECTOR OF PUBLIC WORKS DATE	CONTRACT NO. 744-S CAPITAL PROJECT NO. S-4-6037	PLAN MOUNT HEBRON SEWER MAINS	MOUNT HEBRON SEWER MAINS ELECTION DISTRICT NO. 2 HOWARD COUNTY, MARYLAND	DRAWING NO. 8 OF 14	SCALE 1" = 50'	Designed: REP Drafted: ARZ Checked: TAF
					OCTOBER 2010 INSTALL COMBINATION AIR VALVE DW-100		





**PURDUM & JESCHKE**  
 ENGINEERS  
 1023 N. CALVERT ST.  
 BALTIMORE, MARYLAND

**DEPARTMENT OF PUBLIC WORKS**  
 HOWARD COUNTY, MARYLAND  
 77 Reg. J. 8-27-77  
 DIRECTOR OF PUBLIC WORKS DATE CHIEF BUREAU OF ENGINEERING DATE

CONTRACT NO. 744-S  
 CAPITAL PROJECT NO. S-4-6037

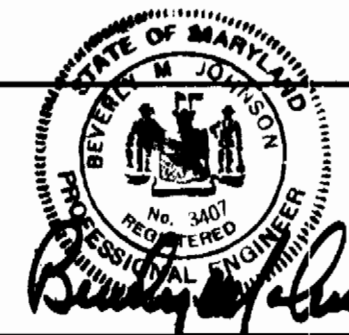
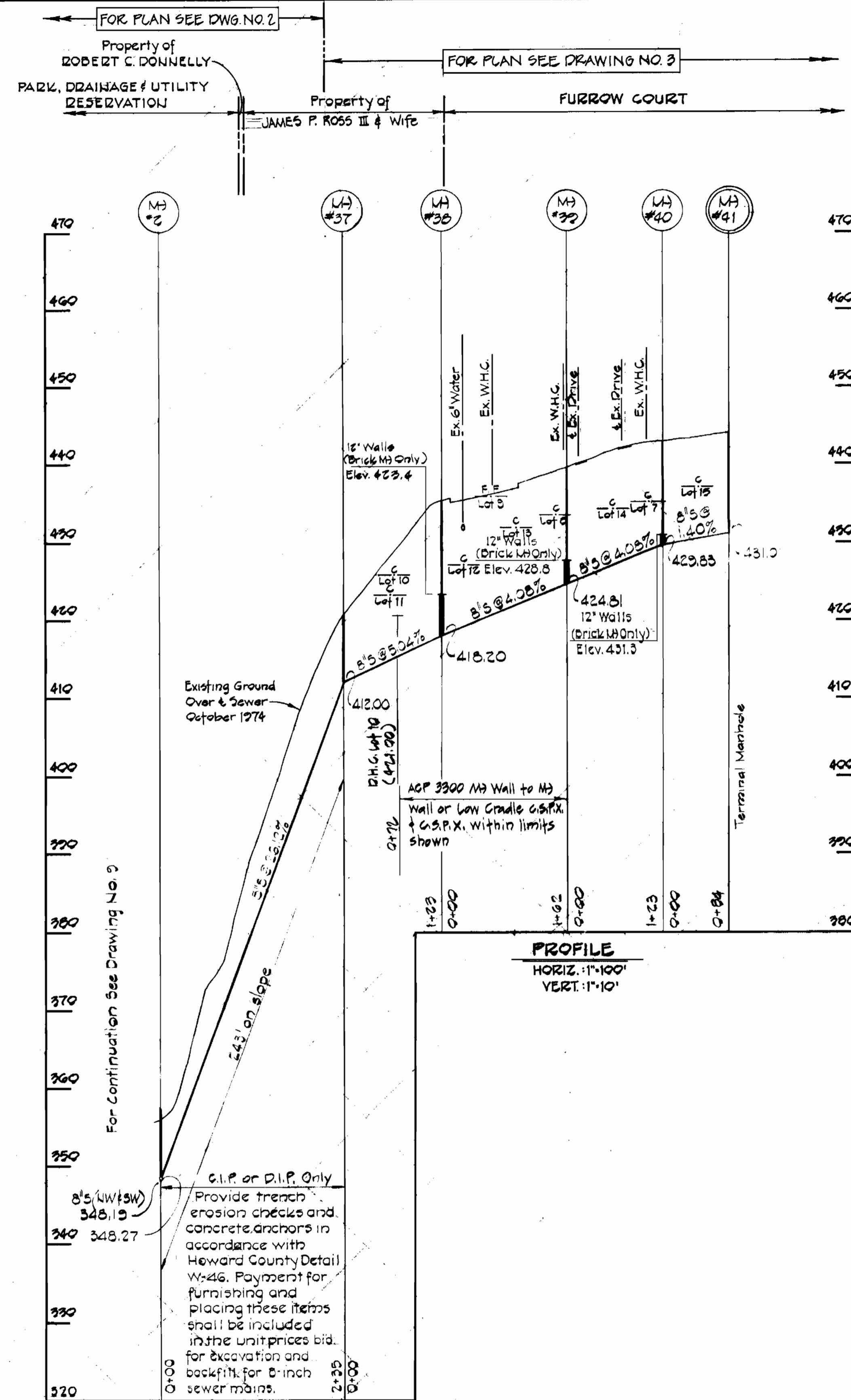
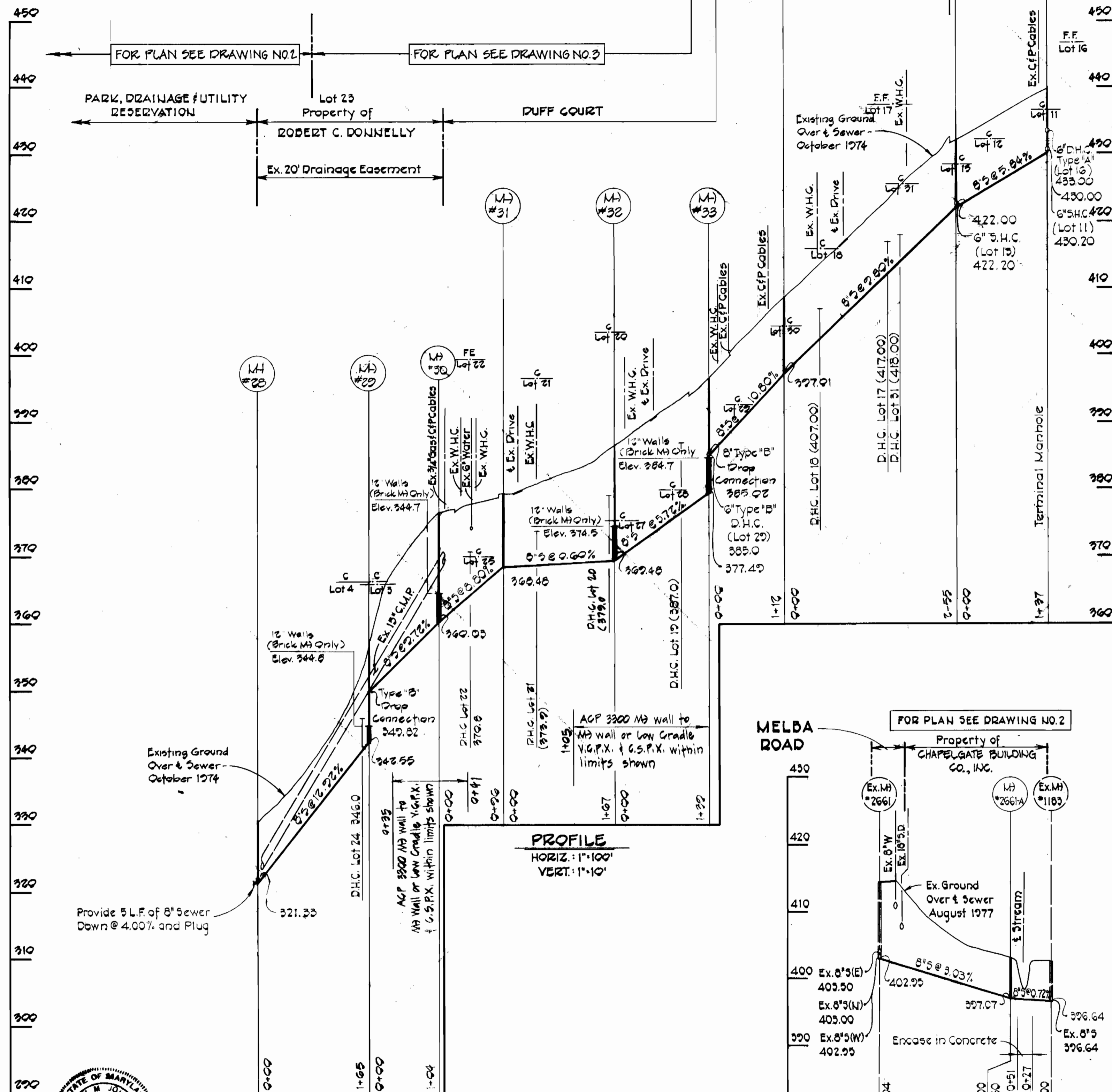
PROFILES OF  
 SEWER AND FORCE MAINS

**MOUNT HEBRON SEWER MAINS**  
 ELECTION DISTRICT NO. 2  
 HOWARD COUNTY, MARYLAND

CONTRACT NO. 744-S  
 MOUNT HEBRON SEWER MAIN EXTENSION  
 HOWARD COUNTY CAPITAL PROJECT S-4-6037

DRAWING NO. 9 OF 14  
 SCALE As Shown  
 Designed: REP  
 Drafted: REC  
 Checked: TAF





**PURDUM & JESCHKE**  
ENGINEERS  
1023 N. CALVERT ST.  
BALTIMORE, MARYLAND

**DEPARTMENT OF PUBLIC WORKS**  
HOWARD COUNTY, MARYLAND  
8-30-77  
DATE

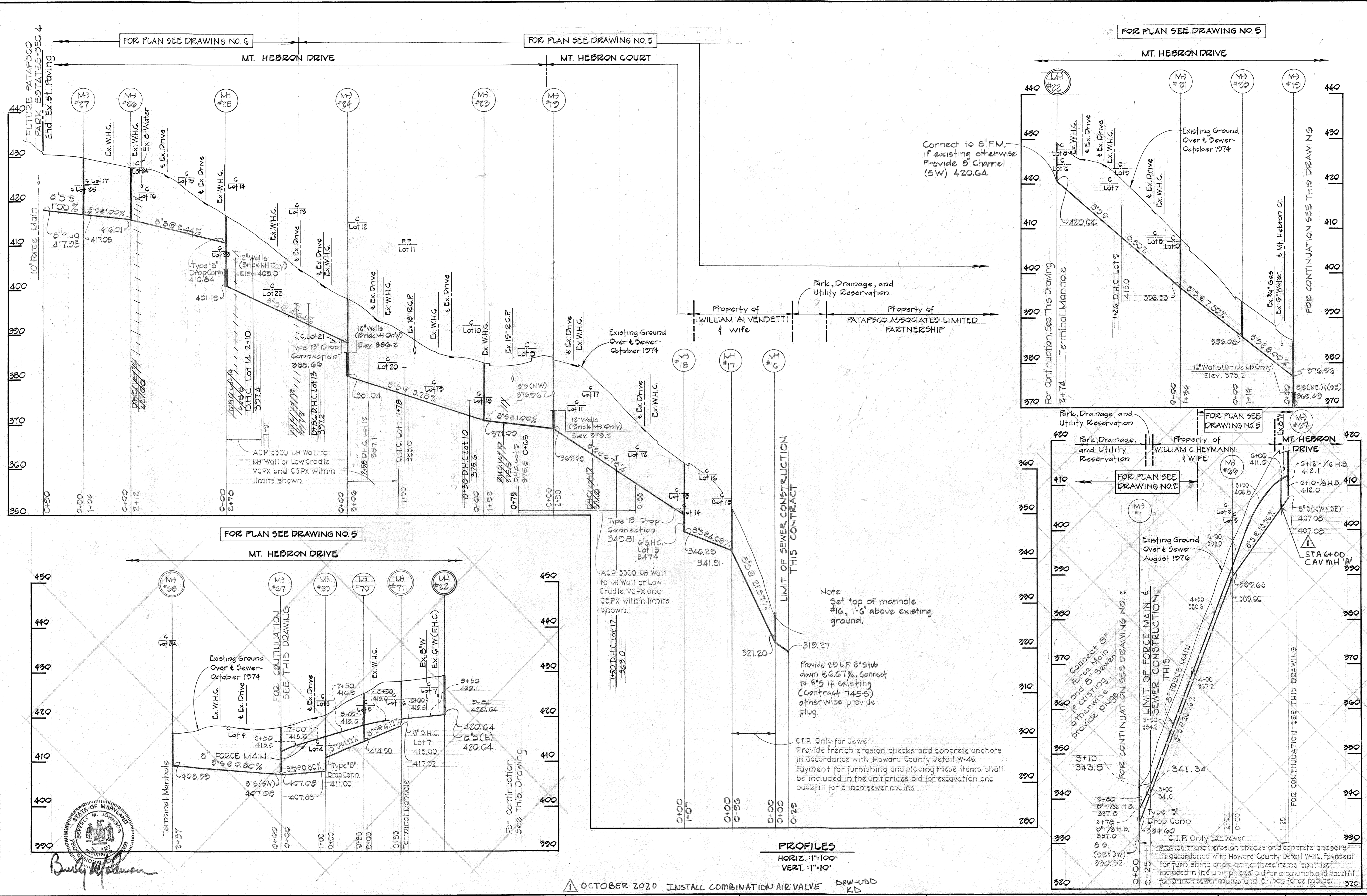
**CONTRACT NO. 744-S**  
**CAPITAL PROJECT NO. S-4-6037**

**PROFILES OF SEWER MAINS**

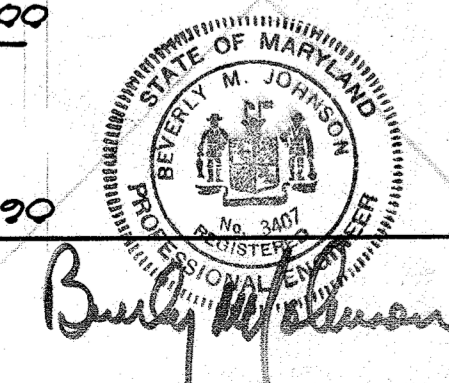
**MOUNT HEBRON SEWER MAINS**  
ELECTION DISTRICT NO.2  
HOWARD COUNTY, MARYLAND

**DRAWING NO. 10 OF 14**  
**SCALE As Shown**  
Designed: REP  
Drafted: REC  
Checked: TAF





WS 744-S/11



**PURDUM & JESCHKE**  
ENGINEERS  
1023 N. CALVERT ST.  
BALTIMORE, MARYLAND

**DEPARTMENT OF PUBLIC WORKS**  
HOWARD COUNTY, MARYLAND  
8-30-77  
DATE

CONTRACT NO. 744-S  
CAPITAL PROJECT NO. S-4-6037

**PROFILES OF SEWER AND FORCE MAINS**

**MOUNT HEBRON SEWER MAINS**  
ELECTION DISTRICT NO. 2  
HOWARD COUNTY, MARYLAND

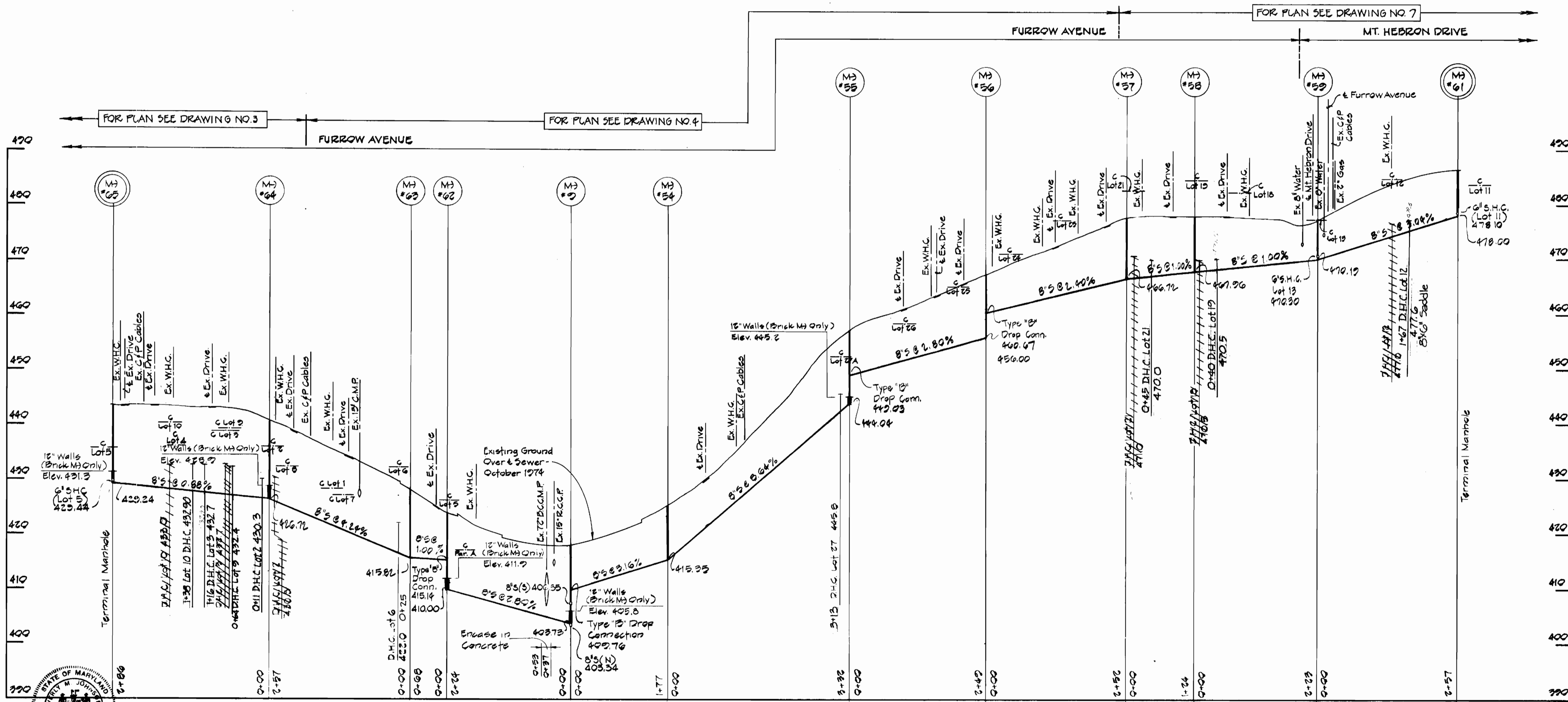
DRAWING NO. 11 OF 14  
SCALE As Shown  
Designed-REP  
Drafted-REC  
Checked-TAF

AS BUILT - JANUARY, 1980



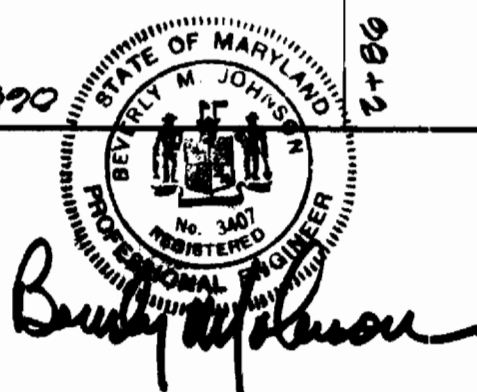






PROFILE  
 HORIZ. 1"=100'  
 VERT. 1"=10'

CONTRACT NO. 744-S  
 MOUNT HEBRON SEWER MAIN EXTENSION  
 HOWARD COUNTY CAPITAL PROJECT S-4-6037



PURDUM & JESCHKE  
 ENGINEERS  
 1023 N. CALVERT ST.  
 BALTIMORE, MARYLAND

DEPARTMENT OF PUBLIC WORKS  
 HOWARD COUNTY, MARYLAND  
 8-20-77  
 DIRECTOR OF PUBLIC WORKS DATE CHIEF-BUREAU OF ENGINEERING DATE

CONTRACT NO. 744-S  
 CAPITAL PROJECT NO. S-4-6037

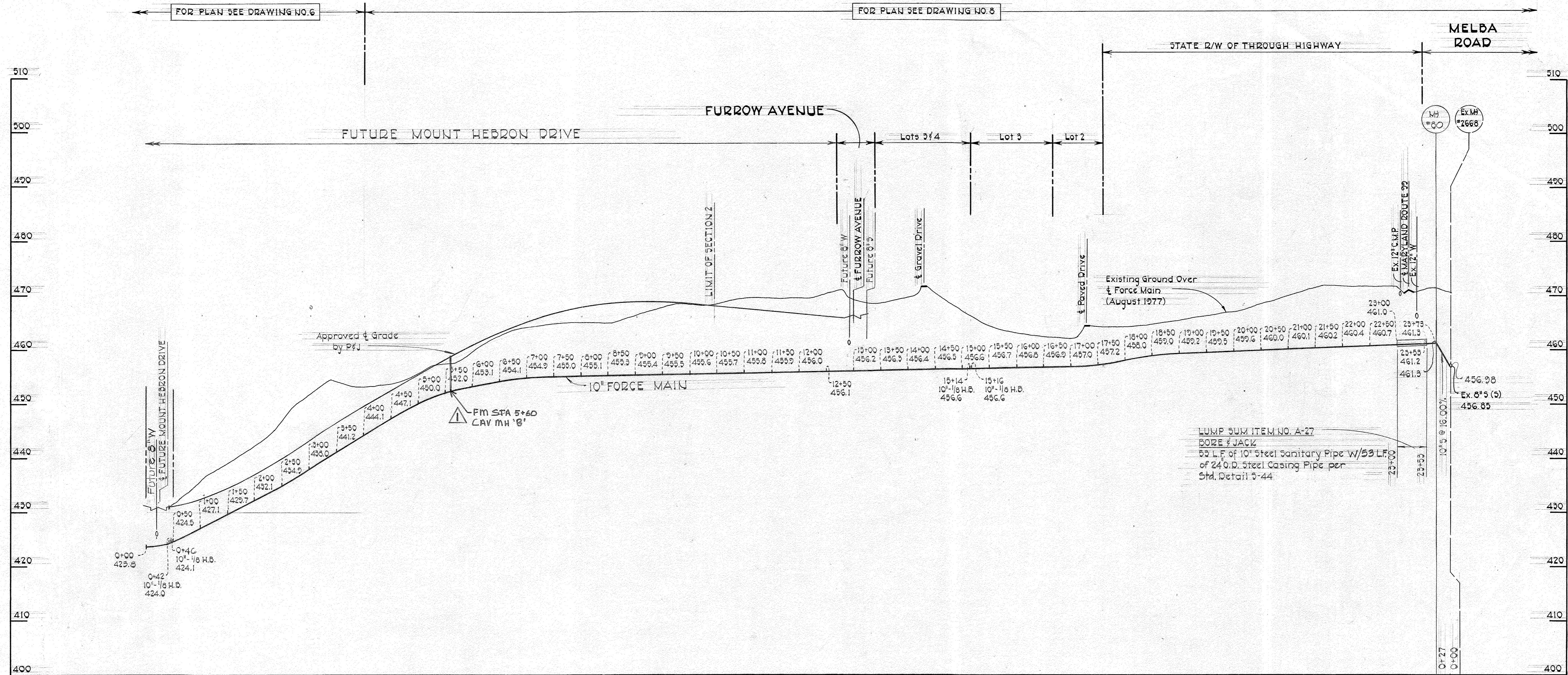
PROFILES OF  
 SEWER MAINS

MOUNT HEBRON SEWER MAINS  
 ELECTION DISTRICT NO. 2  
 HOWARD COUNTY, MARYLAND

DRAWING  
 NO. 13  
 OF 14

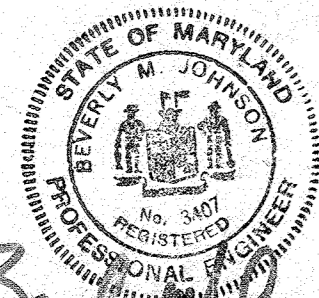
SCALE  
 As Shown  
 Designed: REP  
 Drafted: REC  
 Checked: TAF





**PROFILE**

Scale: Horiz. 1"=100'  
Vert. 1"=10'



*Beverly M. Johnson*

**PURDUM & JESCHKE**  
ENGINEERS  
1023 N. CALVERT ST.  
BALTIMORE, MARYLAND

**DEPARTMENT OF PUBLIC WORKS**  
HOWARD COUNTY, MARYLAND  
*P. J. Regan* 8-30-77 *W. J. West* 8-29-77  
DIRECTOR OF PUBLIC WORKS DATE CHIEF-BUREAU OF ENGINEERING DATE

△ OCTOBER 2020 INSTALL COMBINATION AIR VALVE DPW-UBB KB

CONTRACT NO. 744-S  
CAPITAL PROJECT NO. S-4-6037

PROFILES  
MOUNT HEBRON FORCE MAIN

MOUNT HEBRON SEWER MAINS  
ELECTION DISTRICT NO. 2  
HOWARD COUNTY, MARYLAND

DRAWING NO. 14 OF 14	SCALE As Shown	Designed: REP
		Drafted: ARZ
		Checked: TAF

CONTRACT NO. 744-S  
MOUNT HEBRON SEWER MAIN EXTENSION  
HOWARD COUNTY CAPITAL PROJECT S-4-6037

WS 744-S/14

AS BUILT - JAN 15, 1980