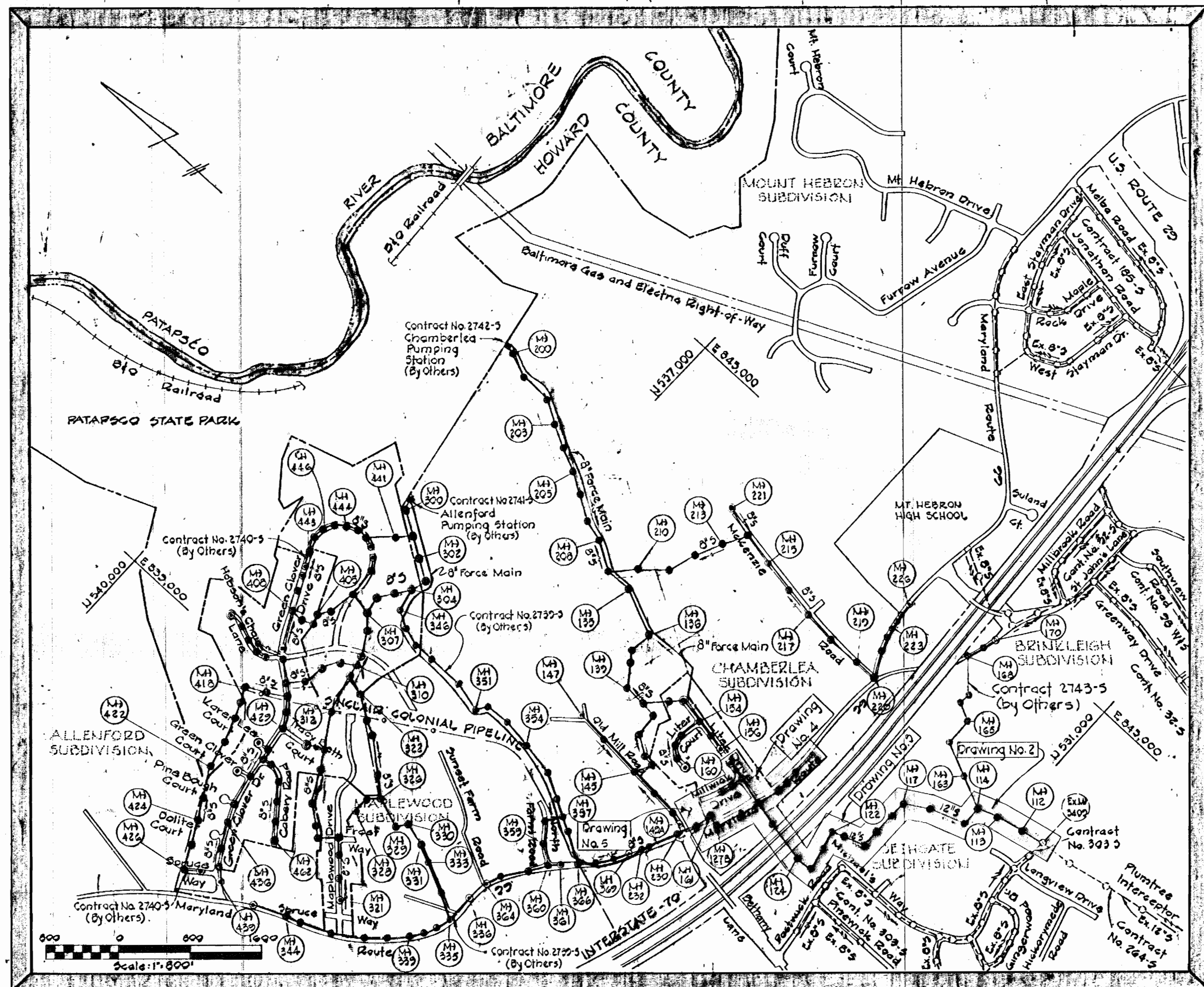


GENERAL NOTES

1. Approximate location of existing utilities are shown. The Contractor shall take all necessary precautions to protect existing utilities and to maintain uninterrupted service. Any damage incurred shall be repaired immediately to the satisfaction of the Engineer by the Contractor at the Contractor's expense.
2. The Contractor shall locate existing utilities a minimum of two weeks in advance of construction operations in vicinity of utilities. Cost shall be included in the unit prices bid for excavation and backfill for mains.
3. Contractor shall notify the following utilities or agencies at least five (5) days before starting work shown on these plans:
 Miss Utility - (Collect)-1-559-0100
 Baltimore Gas & Electric Company - Underground Electric Distribution Engineering "Damage Control" Mr. G.J. Zeller, Manager - 234-5891
 Baltimore Gas & Electric Company - Underground Gas Distribution Engineering, Mr. Bell - 234-5533
 Chesapeake and Potomac Telephone Co. - 725-9978
4. Clear all utilities by a minimum of 6". Clear all poles 2'-0" minimum or tunnel as required. Cost for tunneling or bracing at poles shall be included in the unit prices bid for excavation and backfill for sewer mains.
5. All pipe elevations shown are invert OL elevations.
6. All manholes shall be 4'-0" inside diameter, unless otherwise noted.
7. The Contractor shall provide a pipe joint in each sewer main within 2'-0" of the exterior manhole falls.
8. Watertight manhole frame and cover to be used where indicated on drawings Standard Details S-12 (RCR-83 A). Where watertight manhole frame and cover is used, set top of frame 1'-6" above finished grade.
9. For details not shown on the Contract Drawings see Standard Details bound in the specifications.
10. Trees are to be protected from damage to the maximum extent.
11. Contractor shall remove trees, stumps and roots along line of excavation as directed by the Engineer. Payment for such removal shall be included in the unit price bid for excavation and backfill for sewer mains.
12. Place regulation "Man Working" and warning signs as required to comply with Maryland State Highway Administration Manual of Traffic Control for Highway Construction and Maintenance Operations.
13. All sewer mains shall be C.S.P.W., V.C.P.W., or A.C.P. Class 2400 unless otherwise noted.
14. Horizontal and vertical controls are based on the Maryland State Grid Coordinate System.



ITEM	QUANTITIES	
	ESTIMATED	AS-BUILT
12" Sewer	4455 L.F.	4455 L.F.
8" Sewer	2430 L.F.	2412 L.F.
8" Sewer	270 L.F.	316 L.F.
8" Force Main	5 L.F.	5 L.F.
Manholes	350 V.F.	323 V.F.

CONTRACT NO. 2738-S-A
CHAMBERLEA SANITARY SEWERS
CHAMBERLEA SUBDIVISION
HOWARD COUNTY, MARYLAND
DEPARTMENT OF PUBLIC WORKS



PURDUM & JESCHKE
 ENGINEERS
 1023 N. CALVERT ST.
 BALTIMORE, MARYLAND

DEPARTMENT OF PUBLIC WORKS
 HOWARD COUNTY, MARYLAND
 Director of Public Works DATE: 8-20-77
 Chief Bureau of Engineering DATE:

CONTRACT NO. 2738-S-A
 CAPITAL PROJECT NO. S-4-6067

VICINITY MAP
 CHAMBERLEA SEWER MAINS

CHAMBERLEA SANITARY SEWERS
 ELECTION DISTRICT NO. 2
 HOWARD COUNTY, MARYLAND

DRAWING NO. 1 OF 8
 SCALE 1" = 800'
 MAPS 234-41 B, 234-41

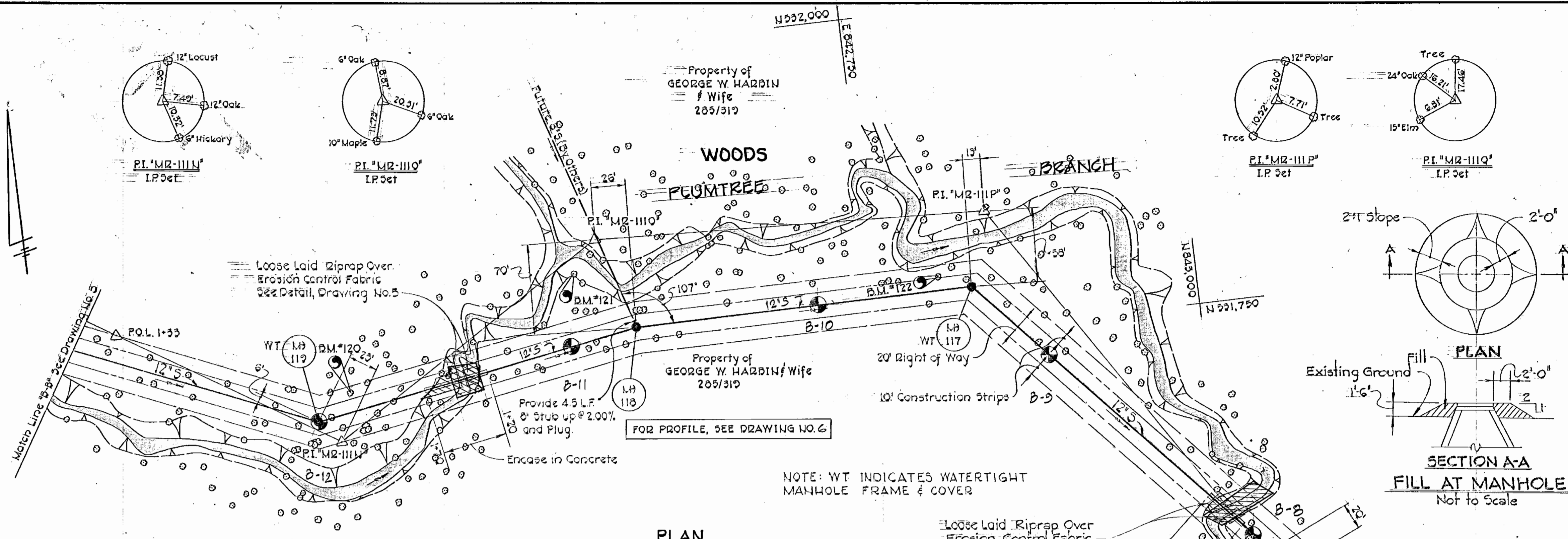
CONTRACT NO. 2738-S-A
 CAPITAL PROJECT NO. S-4-6067
 CHAMBERLEA SANITARY SEWERS
 CHAMBERLEA SUBDIVISION

JANUARY 20, 1981

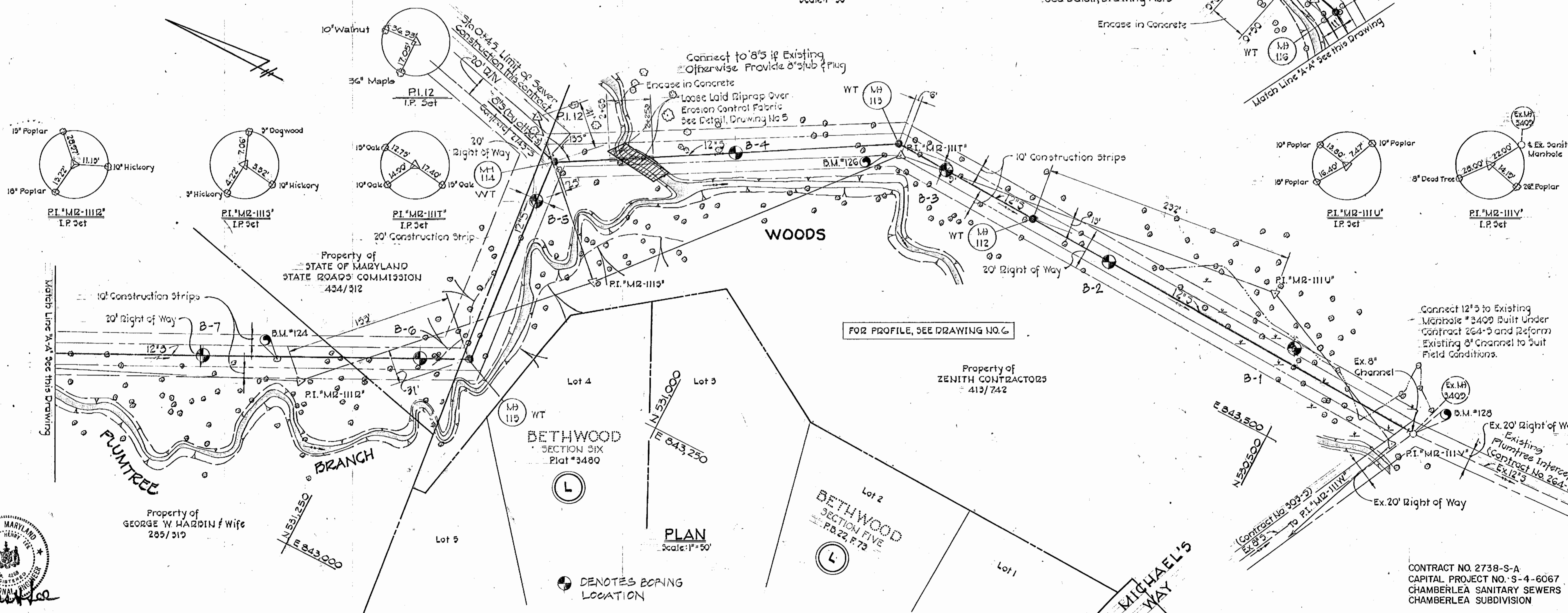
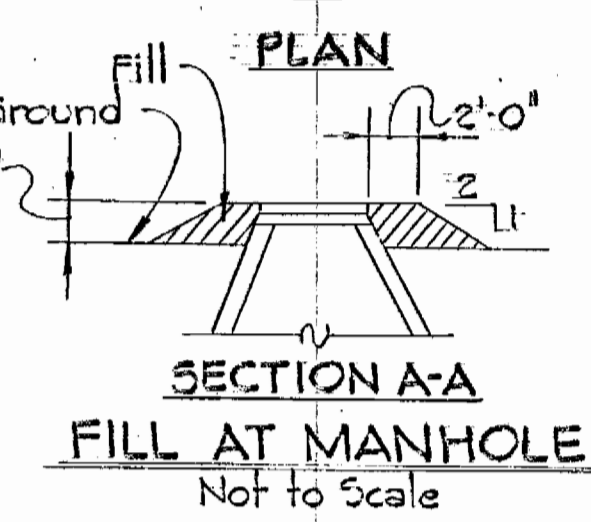
AS BUILT - JULY 27, 1982

BENCH MARKS

- B.M.#120 Elev. 421.79
Railroad Spike in 18-inch Poplar, ±40'
Northeast of P.I. #MR-111N'
- B.M.#121 Elev. 421.35
Railroad Spike in 24-inch Maple
±40' South of P.I. #MR-111O'
- B.M.#122 Elev. 418.45
Railroad Spike in 18-inch Wild Cherry
Tree, ±60' Southwest of P.I. #MR-111P'
- B.M.#124 Elev. 408.93
Railroad Spike in 12-inch Poplar, ±30'
East of P.I. #MR-111I'
- B.M.#126 Elev. 398.74
Railroad Spike in 18-inch Gum Tree
±12' North of P.I. #MR-111T'
- B.M.#128 Elev. 391.97
Rim of Sanitary Sewer Manhole #3402,
±30' East of P.I. #MR-111V'



PLAN
Scale: 1"=50'



PLAN
Scale: 1"=50'



PURDUM & JESCHKE
ENGINEERS
1023 N. CALVERT ST.
BALTIMORE, MARYLAND

DEPARTMENT OF PUBLIC WORKS
HOWARD COUNTY, MARYLAND
DATE: 8-29-77
CHIEF BUREAU OF ENGINEERING

CONTRACT NO. 2738-S-A
CAPITAL PROJECT NO. S-4-6067

PLAN
CHAMBERLEA SEWER MAINS

CHAMBERLEA SANITARY SEWERS
ELECTION DISTRICT NO. 2
HOWARD COUNTY, MARYLAND

DRAWING NO. 2 OF 8
SCALE 1"=50'

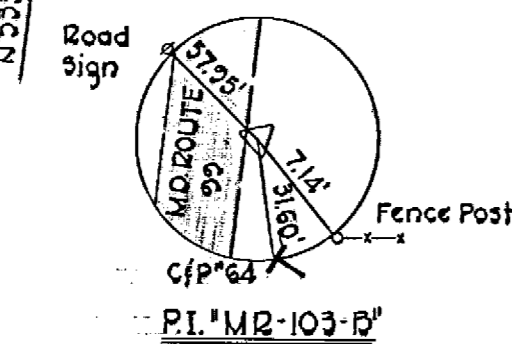
Designed: RDB
Drafted: ARZ
Checked: REP

BENCH MARKS

- B.M. "MR-IIIJ" Elev. 460.94
Iron pipe set for Traverse Station P.I. "MR-IIIJ" ± 50' North of West Bound Lane of Interstate 70.
- B.M. #119 Elev. 435.11
3 nails in 18-inch Twin Elm, 150' ± East of P.I. "MR-IIIJ" west side of woods path.
- B.M. #1 Elev. 454.96
Cut in Top of Headwall 75' ± Northeast of P.I. "E5-1"

TERMINAL MANHOLE

Property of GEORGE W. HARBIN & wife 285/319



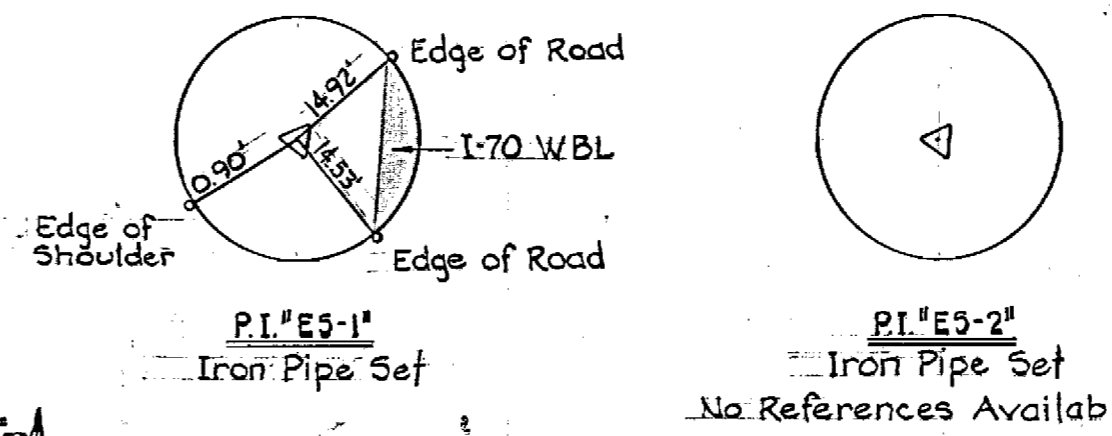
Contractor shall not disturb Existing Fire Hydrant and buttruss.

Provide Type "B" D.H.C. @ Manhole

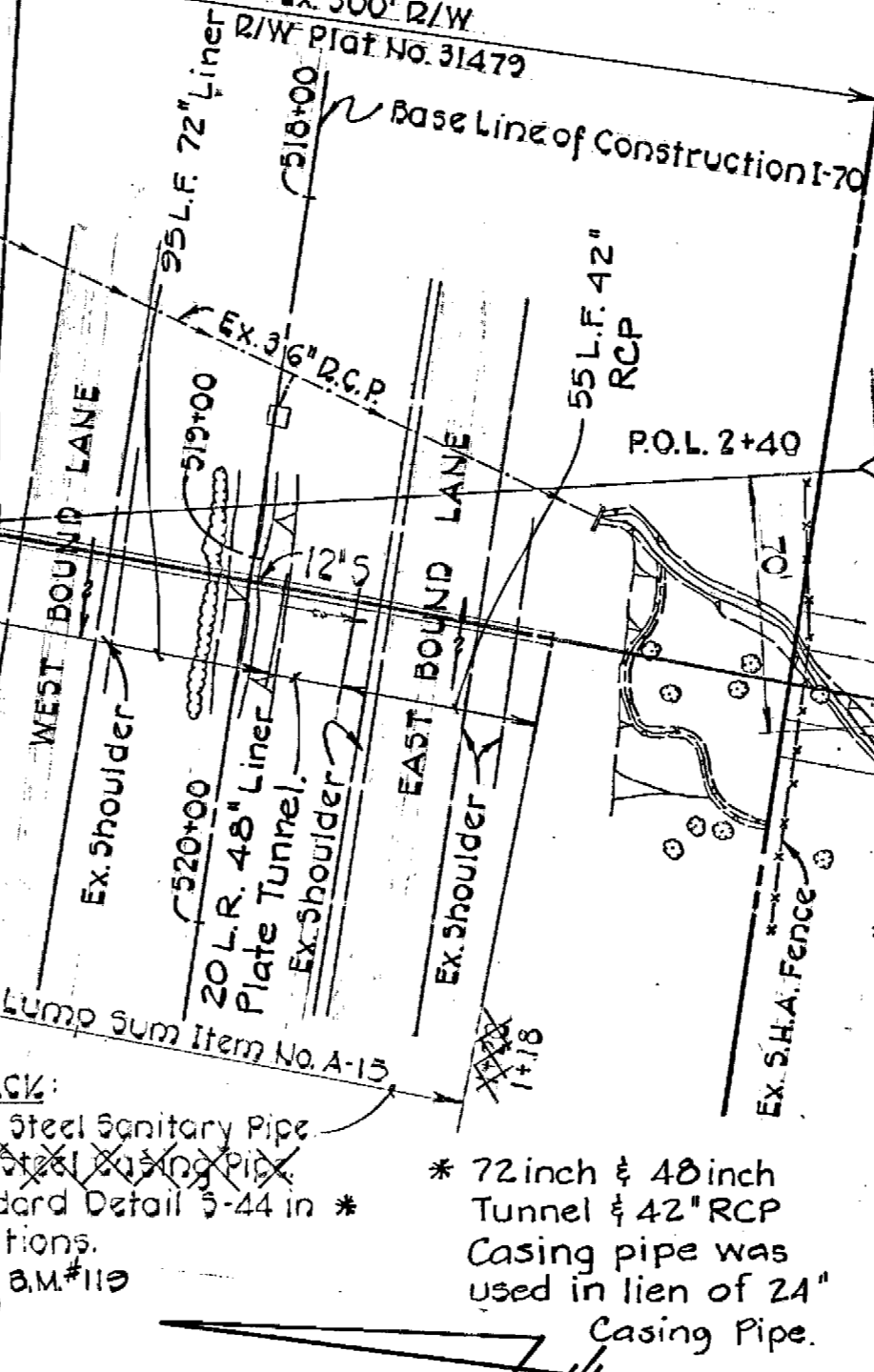
Property of RAYMOND E. CLIFTON & ISABELL B. CLIFTON 365/929

Property of COURTNEY D. KOONTZ & FRANCES A. KOONTZ 183/42

Property of GEORGE W. HARBIN & wife 285/319



INTERSTATE 70-N



NOTE: WT INDICATES WATER TIGHT MANHOLE, FRAME & COVER

Provide 8" C @ Manhole @ 1.00%

Bid Item C-6 Bore & Jack S.H.C.

Property of BLUFE & HUBERT H. HARBIN 224/65

Property of RAYMOND E. CLIFTON & ISABELL B. CLIFTON 365/929

Property of COURTNEY D. KOONTZ & FRANCES A. KOONTZ 183/42

Property of GEORGE W. HARBIN & wife 285/319

Property of GEORGE W. HARBIN & wife 285/319

Property of GEORGE W. HARBIN & wife 285/319

Property of GEORGE W. HARBIN & wife 285/319

Property of GEORGE W. HARBIN & wife 285/319

Property of GEORGE W. HARBIN & wife 285/319

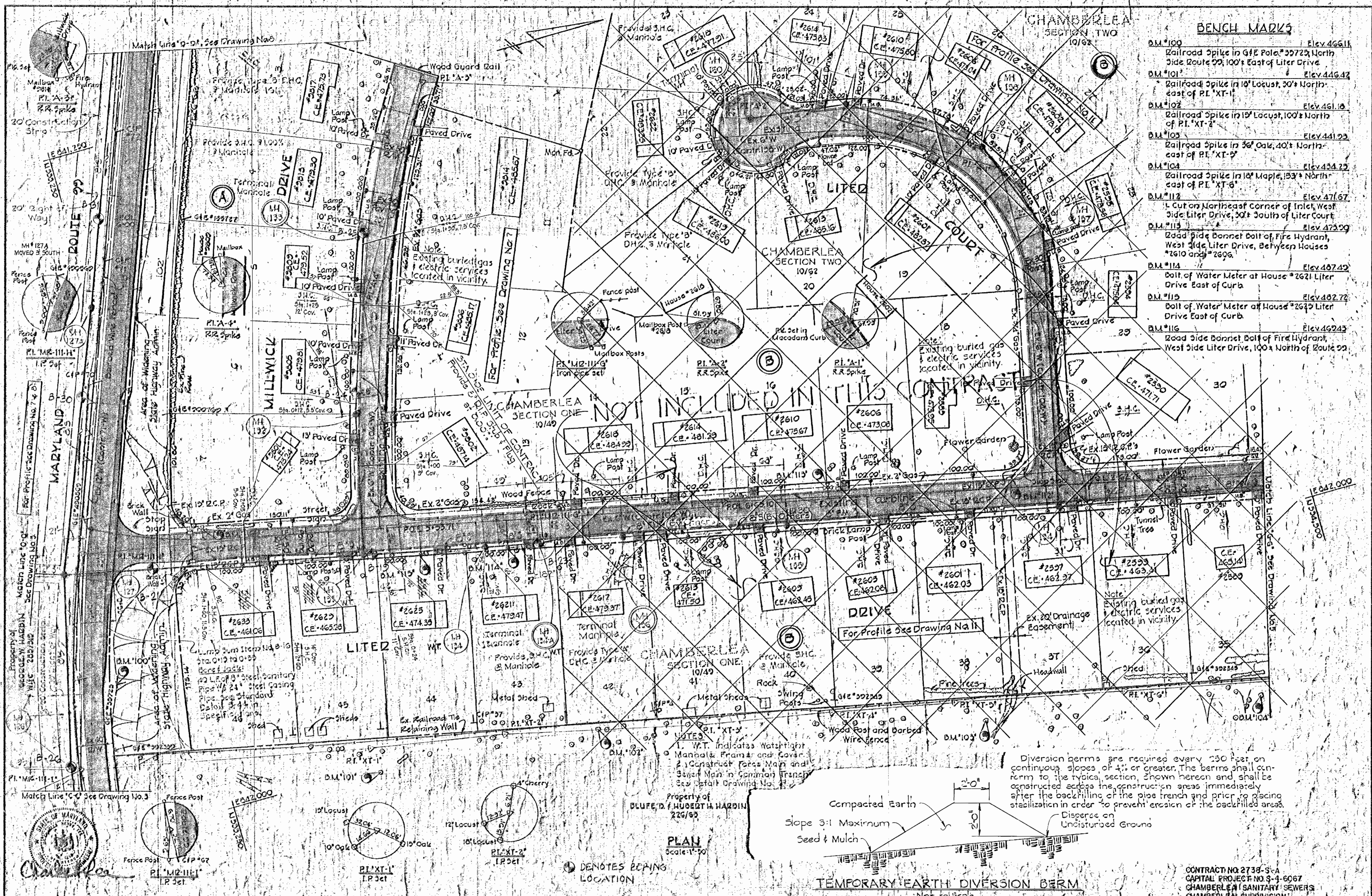
Property of GEORGE W. HARBIN & wife 285/319

Property of GEORGE W. HARBIN & wife 285/319

Property of GEORGE W. HARBIN & wife 285/319



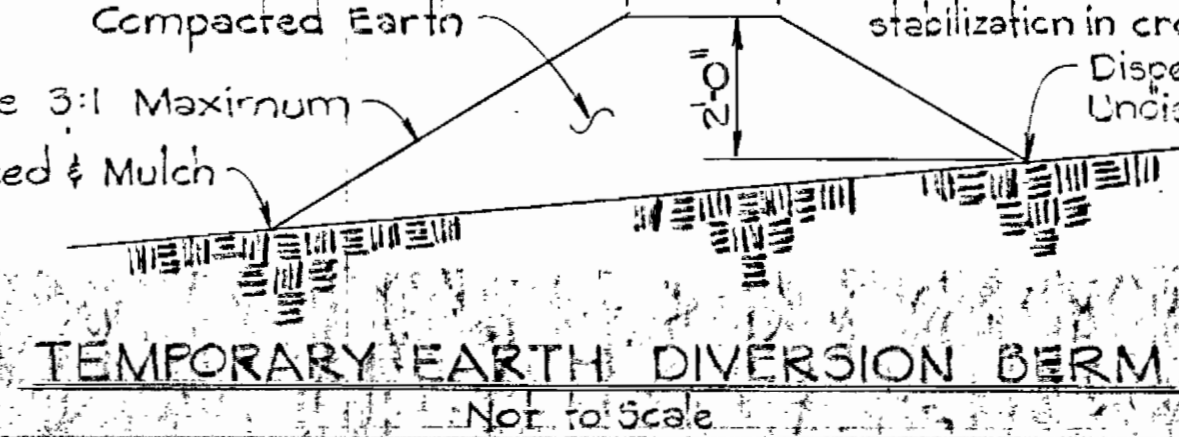
<p>PURDUM & JESCHKE ENGINEERS 1023 N. CALVERT ST. BALTIMORE, MARYLAND</p>	<p>DEPARTMENT OF PUBLIC WORKS HOWARD COUNTY, MARYLAND DATE: 8-22-77 CHIEF BUREAU OF ENGINEERING DATE: 8-22-77</p>	<p>CONTRACT NO. 2738-S-A CAPITAL PROJECT NO. S-4-6067</p>	<p>PLAN CHAMBERLEA SEWER MAINS</p>	<p>CHAMBERLEA SANITARY SEWERS ELECTION DISTRICT NO. 2 HOWARD COUNTY, MARYLAND</p>	<p>DRAWING NO. 3 OF 8 SCALE 1"=50'</p>
---	---	---	--	---	--



- BENCH MARKS**
- BM #100 Elev. 466.11
Railroad Spike in G.F.E. Pole #3723, North Side Route 99, 100' East of Litez Drive
 - BM #101 Elev. 446.42
Railroad Spike in 10' Locust, 30' North-east of PL 'XT-1'
 - BM #102 Elev. 461.18
Railroad Spike in 10' Locust, 100' North of PL 'XT-2'
 - BM #103 Elev. 441.29
Railroad Spike in 36' Oak, 40' North-east of PL 'XT-3'
 - BM #104 Elev. 434.29
Railroad Spike in 10' Maple, 153' North-east of PL 'XT-6'
 - BM #112 Elev. 471.67
Cut on Northeast Corner of Inlet, West Side Litez Drive, 30' South of Litez Court
 - BM #113 Elev. 473.99
Road Side Bonnet Bolt of Fire Hydrant, West Side Litez Drive, Between Houses #2610 and #2606
 - BM #114 Elev. 467.49
Bolt of Water Meter at House #2621 Litez Drive East of Curb
 - BM #115 Elev. 462.72
Bolt of Water Meter at House #2623 Litez Drive East of Curb
 - BM #116 Elev. 462.43
Road Side Bonnet Bolt of Fire Hydrant, West Side Litez Drive, 100' North of Route 99

- NOTES**
1. W.T. indicates Watchright Manhole Frame and Cover.
 2. Construct Force Main and Sewer Main in Common Trench See Detail Drawing No. 2.

Diversion berms are required every 250 feet on continuous slopes of 4% or greater. The berms shall conform to the typical section shown hereon and shall be constructed across the construction areas immediately after the backfilling of the pipe trench and prior to placing stabilization in order to prevent erosion of the backfilled areas.



PLAN
Scale 1"=50'

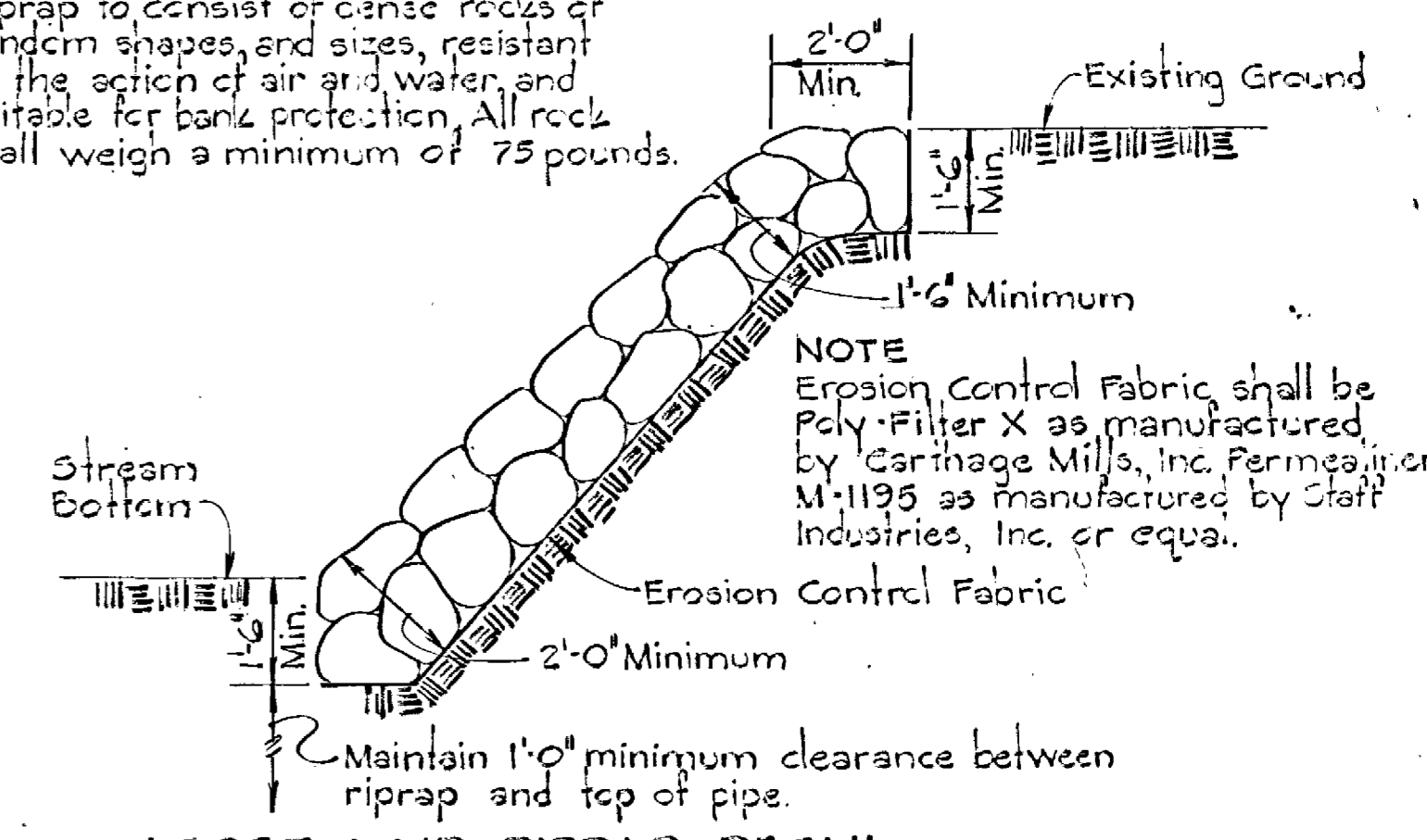
⊙ DENOTES BOPING LOCATION

PURDUM & JESCHKE ENGINEERS 1023 N. CALVERT ST. BALTIMORE, MARYLAND	DEPARTMENT OF PUBLIC WORKS HOWARD COUNTY, MARYLAND <i>M. B. ...</i> DIRECTOR OF PUBLIC WORKS	CONTRACT NO. 2738-3-A CAPITAL PROJECT NO. 4-6067	PLAN CHAMBERLEA SEWER & FORCE MAINS	CHAMBERLEA SANITARY SEWERS ELECTION DISTRICT NO. 2 HOWARD COUNTY, MARYLAND	DRAWING NO. 4 OF 8 SCALE 1"=50' Design'd: RDB Drafted: AEL Checked: REP
--	--	---	--	---	---

BENCH MARKS

- B.M.#1 Elev. 497.03
2.2 Spike in 12" Maple, ± 30' North of Traverse P.I. 'E3-1'
- B.M.#2 Elev. 444.24
2.2 Spike in 12" Cherry, ± 24' East of Traverse P.I. 'E3-2'
- B.M.#3 Elev. 456.26
2.2 Spike in GFE #309700, ± 30' South of Traverse P.I. 'E3-3'
- B.M.#4 Elev. 470.02
2.2 Spike in CIP Pole #3, ± 40' South of Traverse P.I. 'E3-4'
- B.M.B.J.#2 Elev. 472.24
3 Cut Nails in CIP Pole #74 at South-east Intersection of Bethany Lane and Maryland Route 29

Riprap to consist of dense rocks of random shapes, and sizes, resistant to the action of air and water, and suitable for bank protection. All rock shall weigh a minimum of 75 pounds.



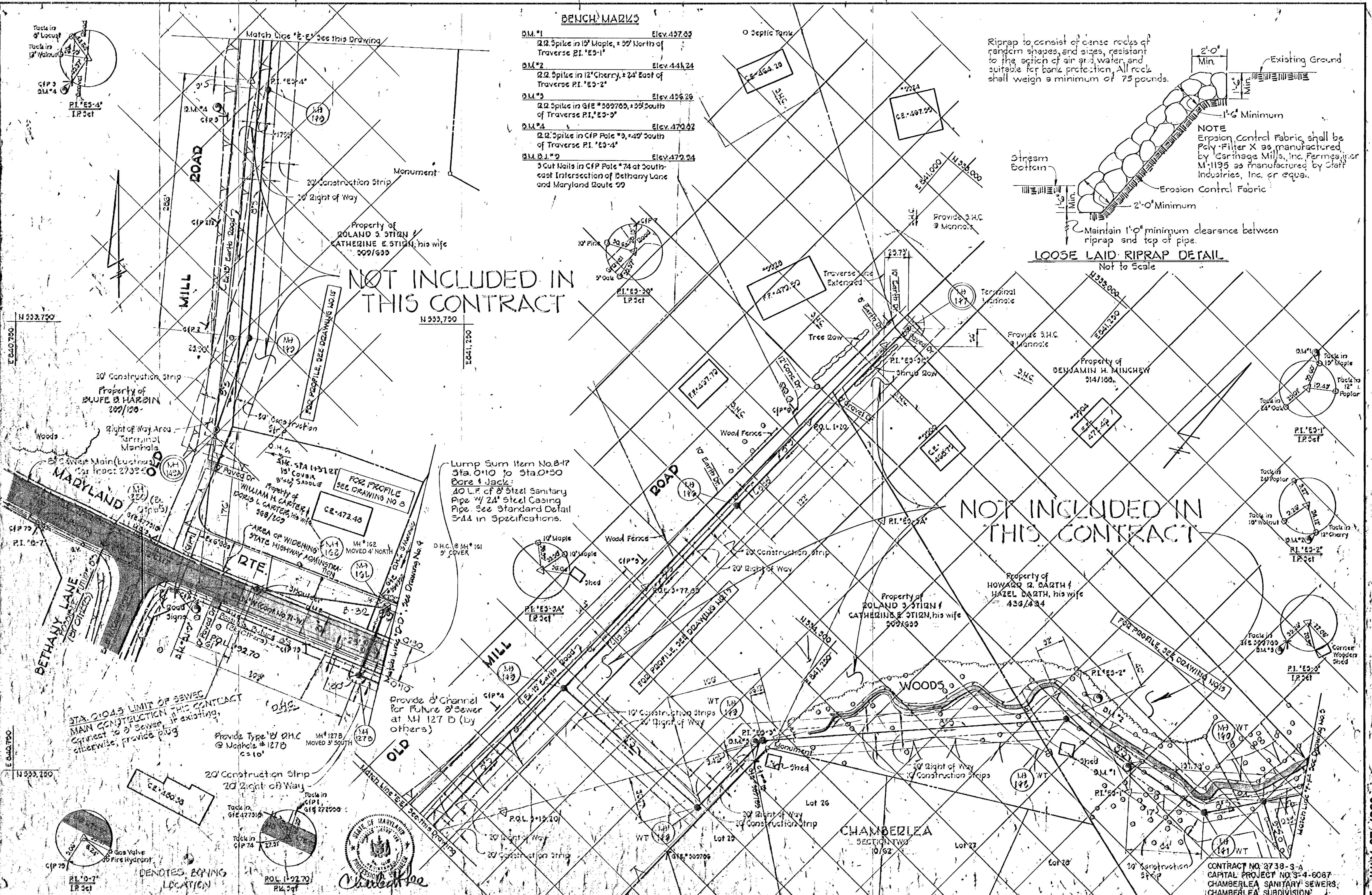
LOOSE LAID RIPRAP DETAIL
Not to Scale

NOT INCLUDED IN THIS CONTRACT

NOT INCLUDED IN THIS CONTRACT

Lump Sum Item No. B-17
Sta. 0+10 to Sta. 0+50
Bore & Jack:
40 L.F. of 8" Steel Sanitary Pipe w/ 24" Steel Casing Pipe. See Standard Detail S-44 in Specifications.

STA. 0+045 LIMIT OF SEWER MAIN CONSTRUCTION THIS CONTRACT
Connect to 8" Sewer, if existing, otherwise, provide plug



PURDUM & JESCHKE
ENGINEERS
1033 N. CALVERT ST.
BALTIMORE, MARYLAND

DEPARTMENT OF PUBLIC WORKS
HOWARD COUNTY, MARYLAND
DATE: 8-10-77
DIRECTOR OF PUBLIC WORKS

CONTRACT NO. 2738-S-A
CAPITAL PROJECT NO. S-4-6067

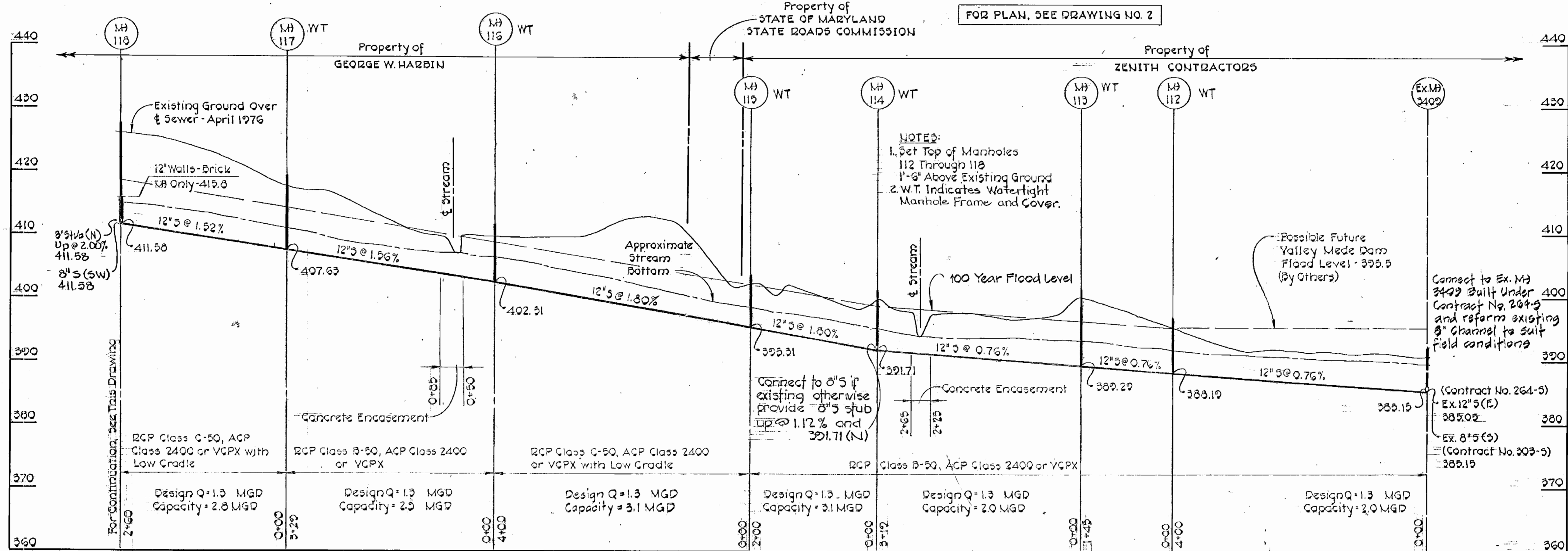
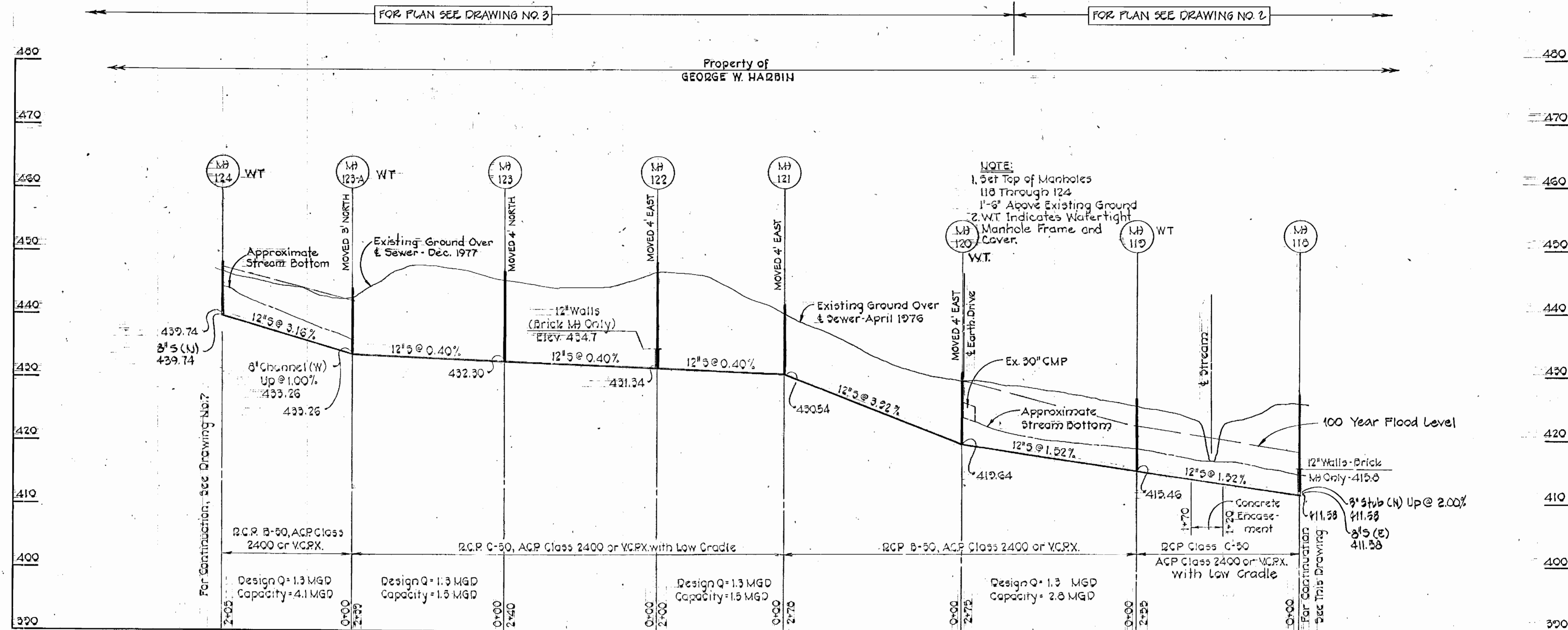
PLAN
CHAMBERLEA SEWER MAINS

CHAMBERLEA SANITARY SEWERS
ELECTION DISTRICT NO. 2
HOWARD COUNTY, MARYLAND

CONTRACT NO. 2738-S-A
CAPITAL PROJECT NO. S-4-6067
CHAMBERLEA SANITARY SEWERS,
CHAMBERLEA SUBDIVISION

DRAWING NO. 5 OF 8
SCALE 1"=50'

AS BUILT - JULY 27, 1982



PROFILES
 Horiz. 1"=100'
 Vert. 1"=10'



PURDUM & JESCHKE
 ENGINEERS
 1023 N. CALVERT ST.
 BALTIMORE, MARYLAND

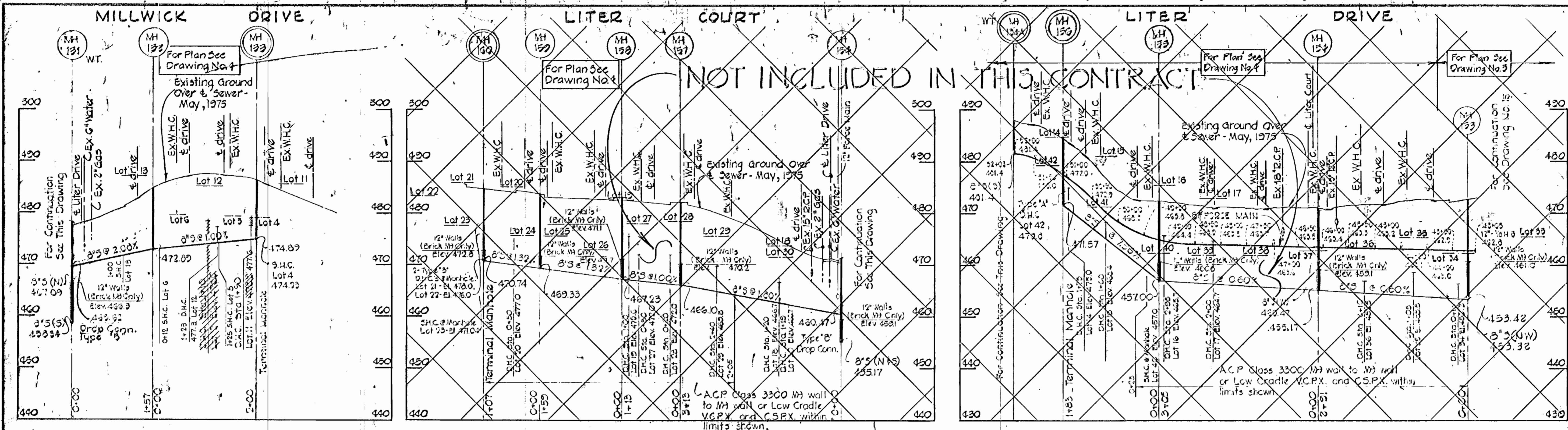
DEPARTMENT OF PUBLIC WORKS
 HOWARD COUNTY, MARYLAND
 M. J. ... 8-30-77 ... 8-29-77
 DIRECTOR OF PUBLIC WORKS DATE CHIEF BUREAU OF ENGINEERING DATE

CONTRACT NO. 2738-S-A
 CAPITAL PROJECT NO. S-4-6067

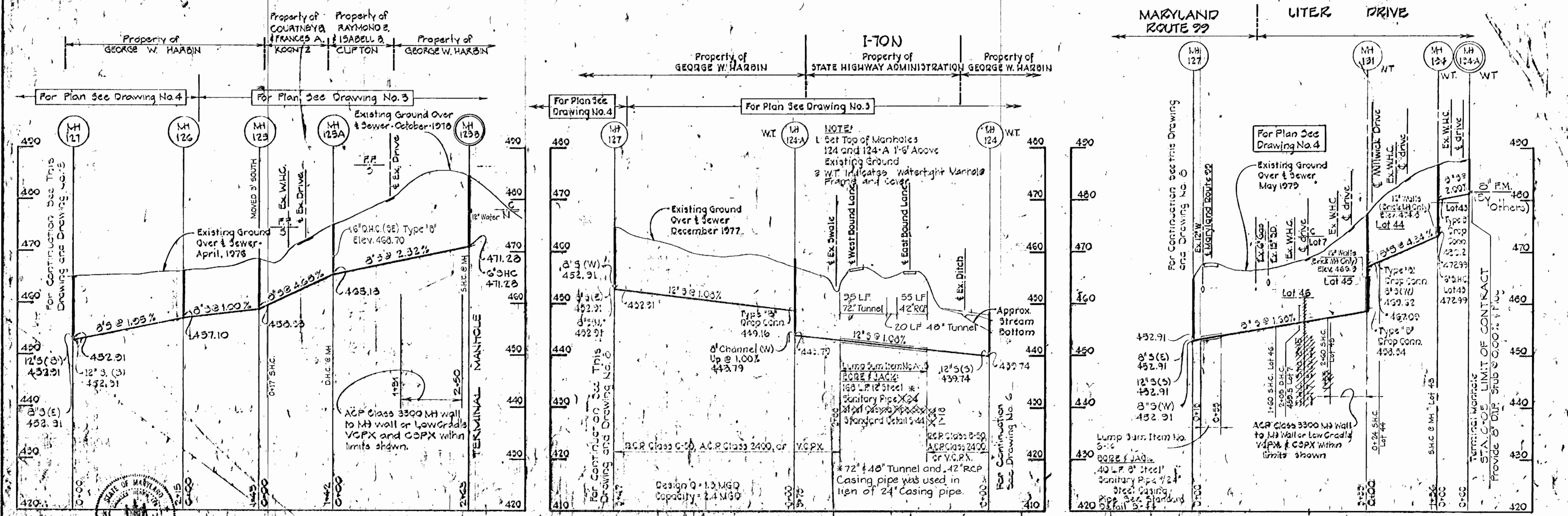
PROFILES
CHAMBERLEA SEWER MAINS

CHAMBERLEA SANITARY SEWERS
 ELECTION DISTRICT NO. 2
 HOWARD COUNTY, MARYLAND

DRAWING NO. 6 OF 8
 SCALE As Shown
 Designed: RDB
 Drafted: ARZ
 Checked: REP



PROFILES
 Horiz. 1"=100'
 Vert. 1"=10'



PROFILES
 Horiz. 1"=100'
 Vert. 1"=10'

PURDUM & JESCHKE
 ENGINEERS
 1023 N. CALVERT ST.
 BALTIMORE, MARYLAND

DEPARTMENT OF PUBLIC WORKS
 HOWARD COUNTY, MARYLAND
 DIRECTOR OF PUBLIC WORKS DATE: _____
 CHIEF BUREAU OF ENGINEERING DATE: _____

CONTRACT NO. 2738-S-A
 CAPITAL PROJECT NO. S-4-6087

PROFILES
CHAMBERLEA SEWER MAINS

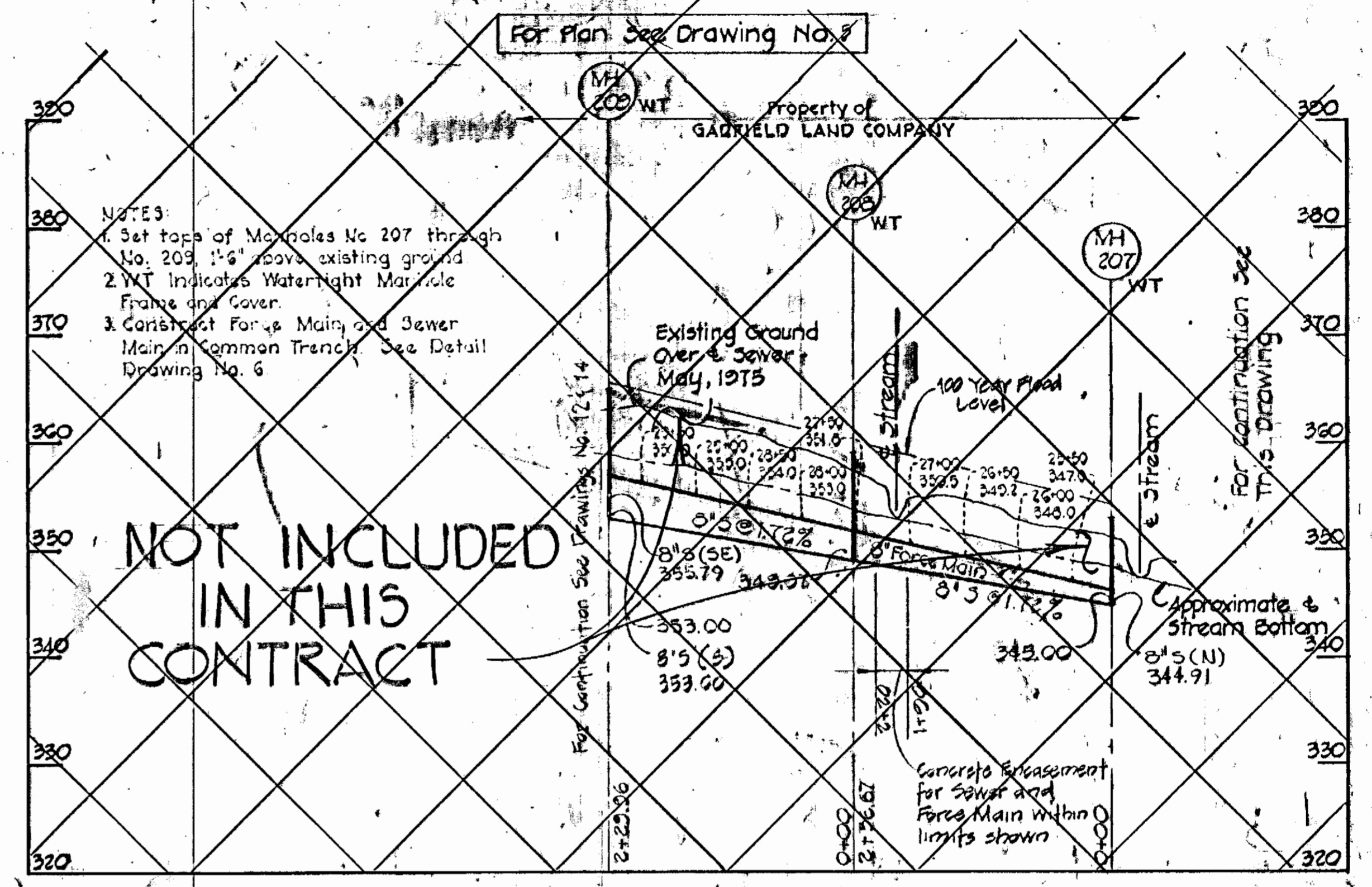
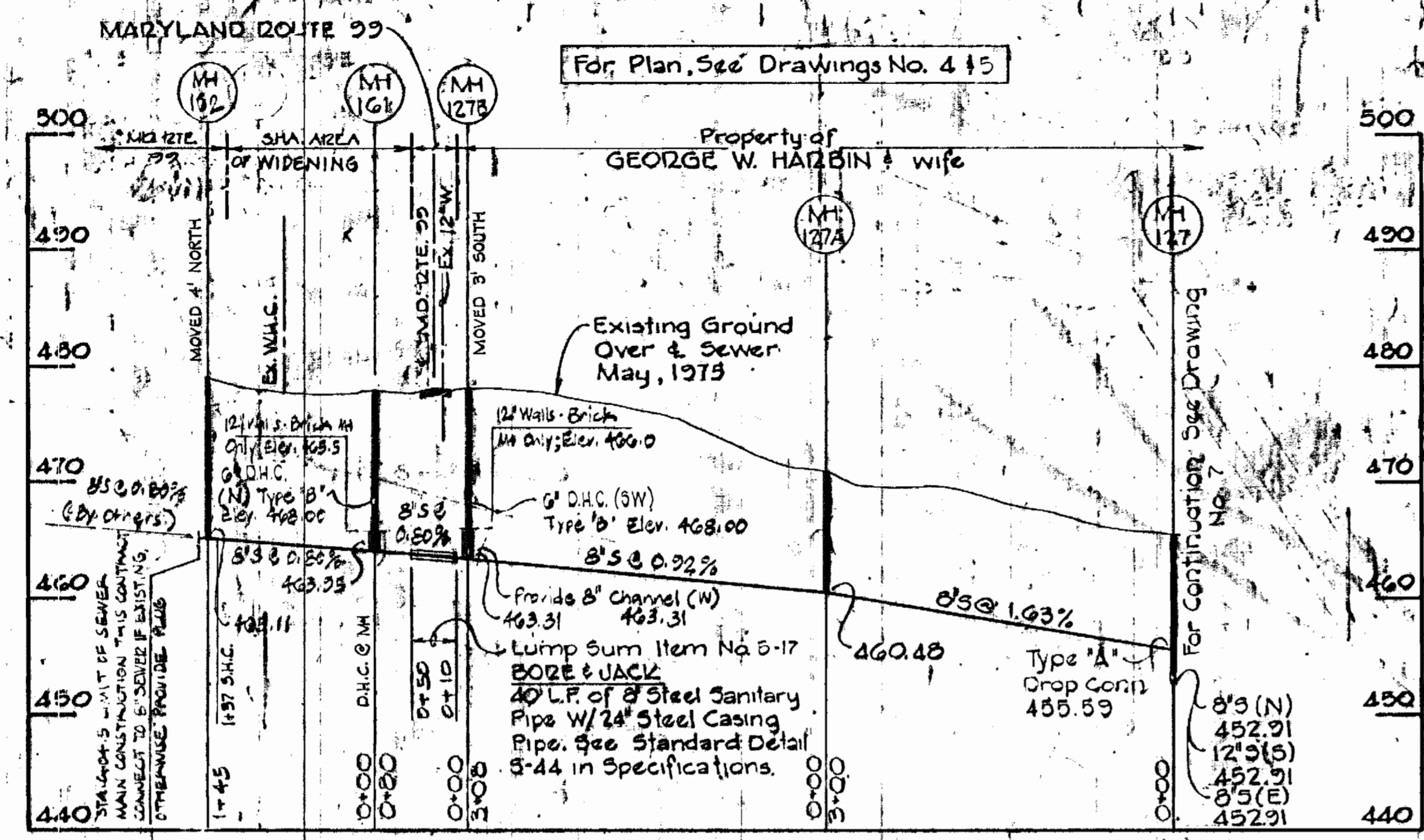
CHAMBERLEA SANITARY SEWERS
 ELECTION DISTRICT NO. 2
 HOWARD COUNTY, MARYLAND

CONTRACT NO. 2738-S-A
 CAPITAL PROJECT NO. S-4-6087
 CHAMBERLEA SANITARY SEWERS
 CHAMBERLEA SUBDIVISION

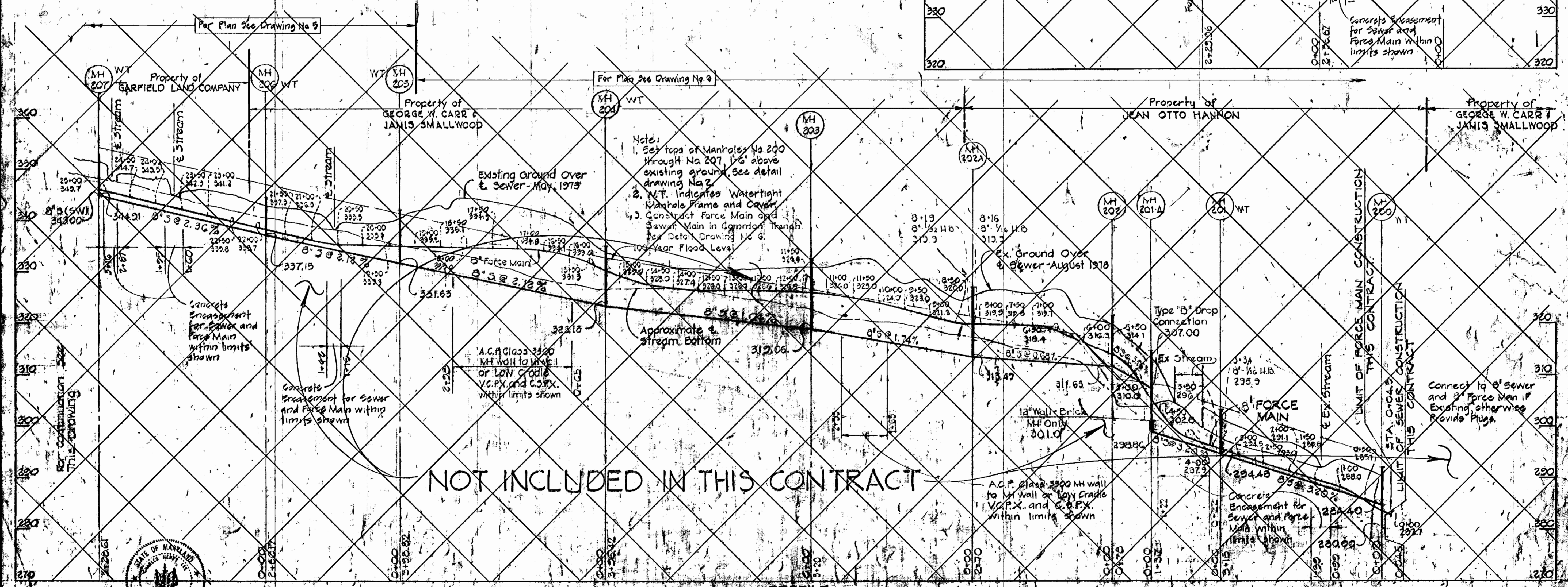
DRAWING NO. 7
 OF 8

SCALE As Shown

Designed: REP
 Checked: REP



NOT INCLUDED
IN THIS
CONTRACT



NOT INCLUDED IN THIS CONTRACT



PURDUM & JESCHKE
ENGINEERS
1023 N. CALVERT ST.
BALTIMORE, MARYLAND

DEPARTMENT OF PUBLIC WORKS
HOWARD COUNTY, MARYLAND
CONTRACT NO. 2738 S-A
CAPITAL PROJECT NO. 13-2887

PROFILES
CHAMBERLEA
SEWER & FORCE MAINS

CHAMBERLEA SANITARY SEWERS
HOWARD COUNTY, MARYLAND

CONTRACT NO. 2738 S-A
CAPITAL PROJECT NO. 13-2887
CHAMBERLEA SANITARY SEWERS
CHAMBERLEA SUBDIVISION
DRAWING NO. 18
OF 8
SCALE: As Shown

AS BUILT - JULY 27, 1982