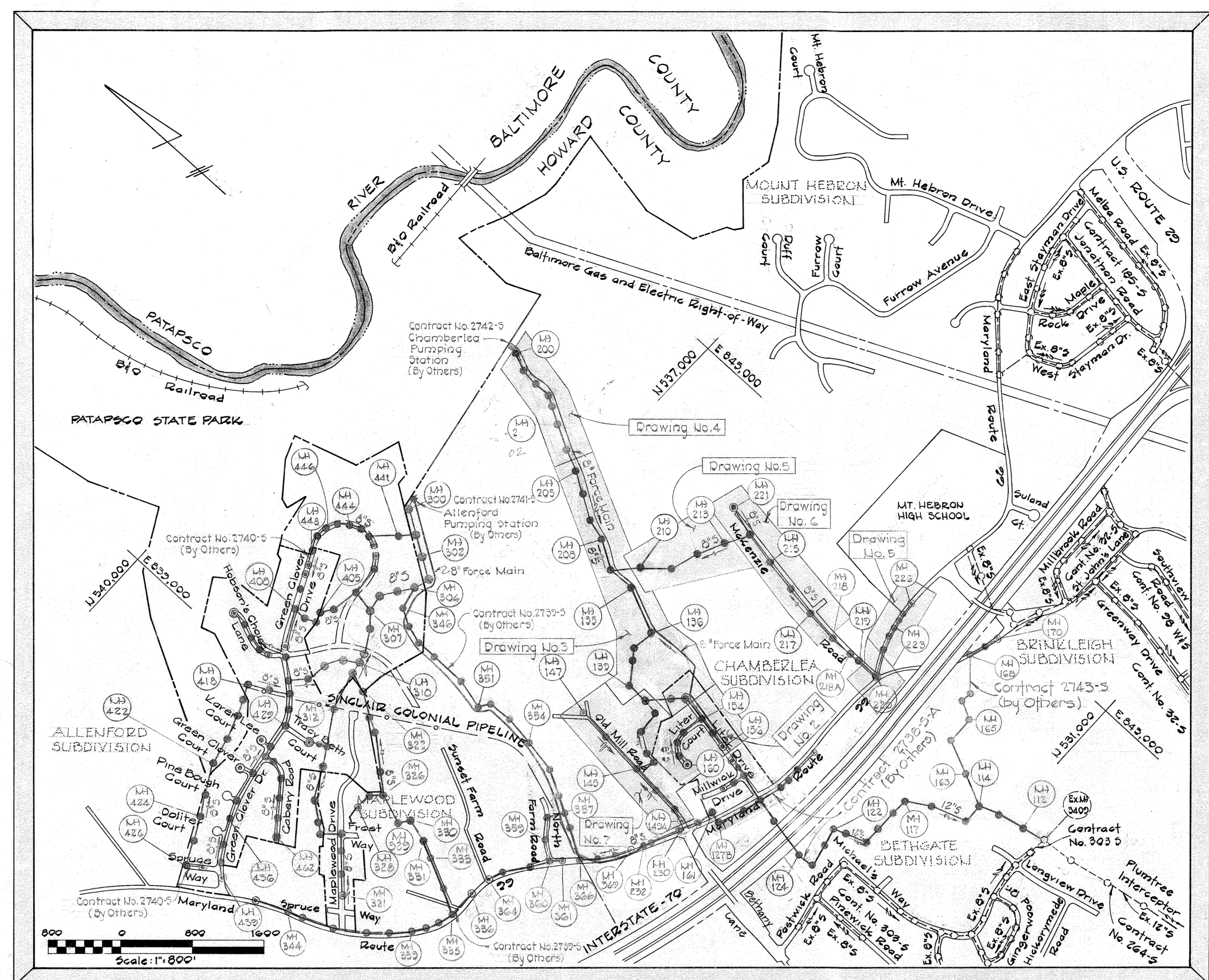


GENERAL NOTES

1. Approximate location of existing utilities are shown. The Contractor shall take all necessary precautions to protect existing utilities and to maintain uninterrupted service. Any damage incurred shall be repaired immediately to the satisfaction of the Engineer by the Contractor at the Contractor's expense.
2. The Contractor shall locate existing utilities a minimum of two weeks in advance of construction operations in vicinity of utilities. Cost shall be included in the unit prices bid for excavation and backfill for mains.
3. Contractor shall notify the following utilities or agencies at least five (5) days before starting work shown on these plans:  
Miss Utility - (Collect) 1-559-0100  
Baltimore Gas & Electric Company - Underground Electric Distribution Engineering "Damage Control" Mr. G.J. Zeller, Manager - 234-5691  
Baltimore Gas & Electric Company - Underground Gas Distribution Engineering, Mr. Bell - 234-5533  
Chesapeake and Potomac Telephone Co. - 725-9976
4. Clear all utilities by a minimum of 6". Clear all poles 2'-0" minimum or tunnel as required. Cost for tunneling or bracing at poles shall be included in the unit prices bid for excavation and backfill for sewer mains.
5. All pipe elevations shown are invert  $\phi$  elevations.
6. All manholes shall be 4'-0" inside diameter, unless otherwise noted.
7. The Contractor shall provide a pipe joint in each sewer main within 2'-0" of the exterior manhole walls.
8. Watertight manhole frame and cover to be used where indicated on drawings Standard Details S-12 (RCR-63 A). Where watertight manhole frame and cover is used, set top of frame 1'-6" above finished grade.
9. For details not shown on the Contract Drawings see Standard Details bound in the specifications.
10. Trees are to be protected from damage to the maximum extent.
11. Contractor shall remove trees, stumps and roots along line of excavation as directed by the Engineer. Payment for such removal shall be included in the unit price bid for excavation and backfill for sewer mains.
12. Place regulation "Men Working" and warning signs as required to comply with Maryland State Highway Administration Manual of Traffic Control for Highway Construction and Maintenance Operations.
13. All sewer mains shall be C.S.P.X., V.C.P.X., or A.C.P. Class 2400 unless otherwise noted.
14. Force mains shall be ductile iron pipe Class 54 in accordance with Section 8 of the specifications. Force main shall have a minimum of 4 feet of cover.
15. Buttress or anchor all force main fittings with concrete. For details see Standard Details bound in the specifications.
16. Horizontal and vertical controls are based on the Maryland State Grid Coordinate System.
17. As-built stationing based on design stations.



QUANTITIES		
ITEM	ESTIMATED	AS-BUILT
8" Sewer	12,625 L.F.	14,785 L.F.
8" Sewer	1,585 L.F.	1,575 L.F.
8" Force Main	5,200 L.F.	2,758 L.F.
Manholes	670 V.F.	655 V.F.
8" SEWER REQUIREMENTS CONTRACT		40 L.F. PVC GALV. VULCAN B.
10" SEWER REQUIREMENTS CONTRACT		141 L.F. PVC GALV. VULCAN B.
MANHOLES REQUIREMENTS CONTRACT		3 ATLANTIC PRECAST

ALL EROSION AND SEDIMENT CONTROL MEASURES SHALL BE IN ACCORDANCE WITH THESE DRAWINGS AND ARTICLE 15 OF THE HOWARD COUNTY DESIGN MANUAL, VOLUME III.

HOWARD SOIL CONSERVATION DISTRICT:  
REVIEWED FOR HOWARD SOIL CONSERVATION DISTRICT AND MEETS TECHNICAL REQUIREMENTS.  
*James M. Kellman* 8/10/82 DATE  
U.S. SOIL CONSERVATION DISTRICT  
THIS PLAN IS APPROVED FOR SOIL EROSION AND SEDIMENT CONTROL BY THE HOWARD SOIL CONSERVATION DISTRICT.  
*William V. Rau* 8-10-82 DATE  
HOWARD SOIL CONSERVATION DISTRICT

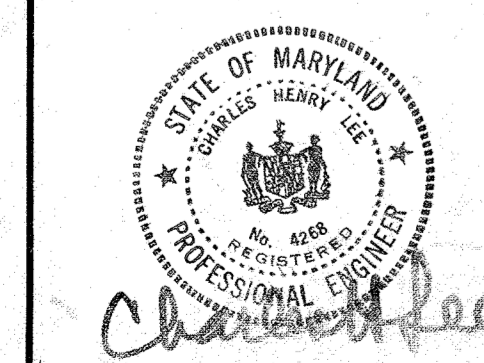
# CONTRACT NO. 2738-S-B

# CHAMBERLEA SANITARY SEWERS

# CHAMBERLEA SUBDIVISION

# HOWARD COUNTY, MARYLAND

## DEPARTMENT OF PUBLIC WORKS



**PURDUM & JESCHKE**  
ENGINEERS  
1023 N. CALVERT ST.  
BALTIMORE, MARYLAND

DEPARTMENT OF PUBLIC WORKS  
HOWARD COUNTY, MARYLAND  
*Robert B. ...* 8-28-81 DATE  
CHIEF-BUREAU OF UTILITIES  
*...* 8-30-82 DATE  
DIRECTOR OF PUBLIC WORKS

CONTRACT NO. 2738-S-B  
CAPITAL PROJECT NO. S-4-6067

VICINITY MAP  
CHAMBERLEA SEWER MAINS

CHAMBERLEA SANITARY SEWERS  
ELECTION DISTRICT NO. 2  
HOWARD COUNTY, MARYLAND

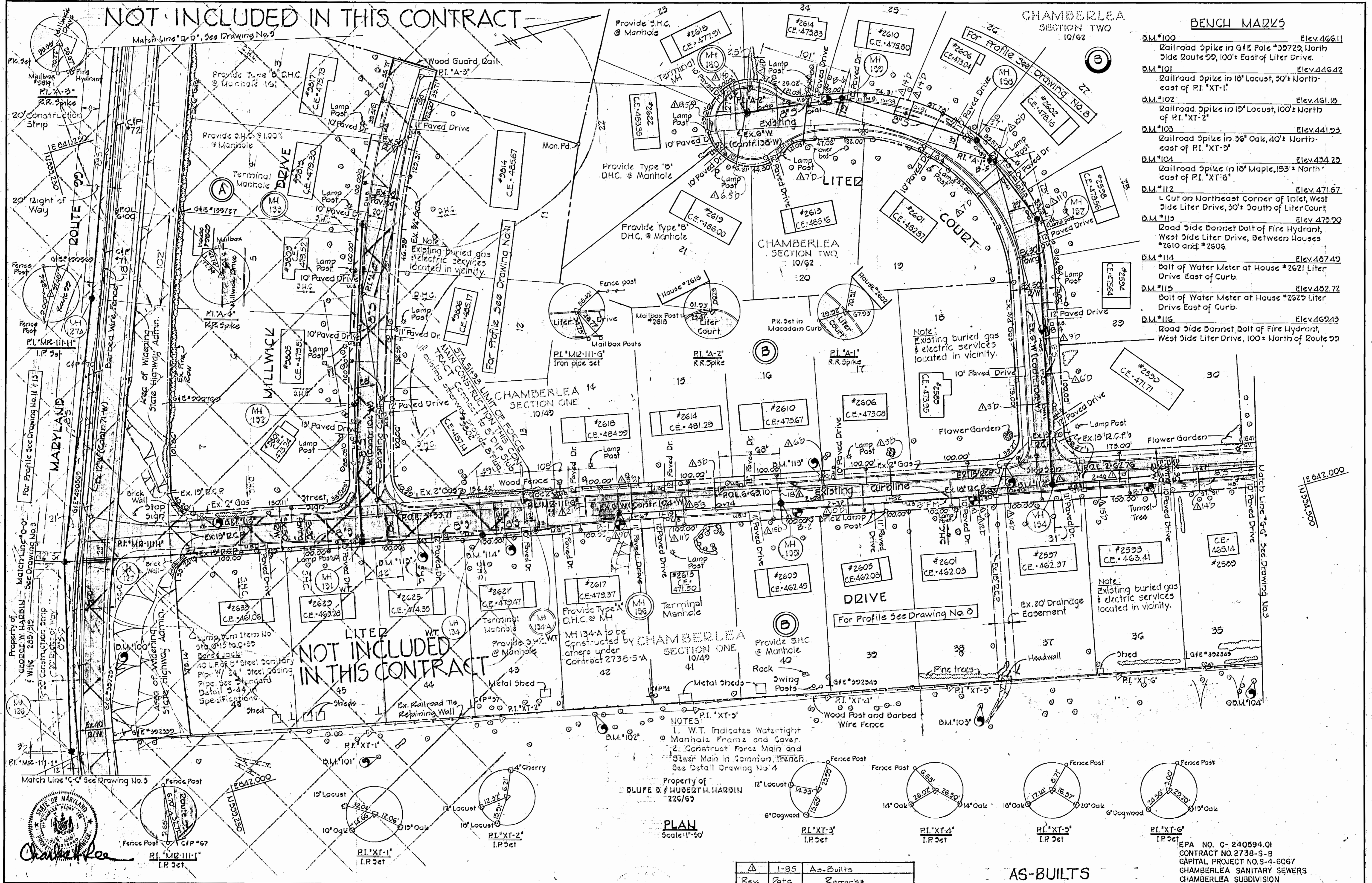
DRAWING NO. 1 OF 12  
SCALE 1" = 800'  
MAPS: 234-41 8, 235-41

NOT INCLUDED IN THIS CONTRACT

CHAMBERLEA SECTION TWO 10/62

BENCH MARKS

- B.M. #100 Elev. 466.11 Railroad Spike in 6" Pole #35729, North Side Route 29, 100' East of Litter Drive.
- B.M. #101 Elev. 446.42 Railroad Spike in 18" Locust, 30' North-east of P.I. "XT-1".
- B.M. #102 Elev. 461.16 Railroad Spike in 15" Locust, 100' North of P.I. "XT-2".
- B.M. #103 Elev. 441.93 Railroad Spike in 36" Oak, 40' North-east of P.I. "XT-5".
- B.M. #104 Elev. 434.23 Railroad Spike in 18" Maple, 153' North-east of P.I. "XT-6".
- B.M. #112 Elev. 471.67 L Cut on Northeast Corner of Inlet, West Side Litter Drive, 30' South of Litter Court.
- B.M. #113 Elev. 473.20 Road Side Bonnet Bolt of Fire Hydrant, West Side Litter Drive, Between Houses #2610 and #2606.
- B.M. #114 Elev. 487.42 Bolt of Water Meter at House #2621 Litter Drive East of Curb.
- B.M. #115 Elev. 482.72 Bolt of Water Meter at House #2625 Litter Drive East of Curb.
- B.M. #116 Elev. 469.43 Road Side Bonnet Bolt of Fire Hydrant, West Side Litter Drive, 100' North of Route 29.



NOT INCLUDED IN THIS CONTRACT

- NOTES:
1. W.T. Indicates Watertight Manhole Frame and Cover.
  2. Construct Force Main and Sewer Main in Common Trench. See Detail Drawing No. 4.

Property of BLUFE D. HUBERTH HARDIN 226/63

PLAN Scale: 1"=50'

Rev.	Date	Remarks
1-85		As-Builts

AS-BUILTS

EPA NO. C-240594.01  
 CONTRACT NO. 2738-S-B  
 CAPITAL PROJECT NO. S-4-6067  
 CHAMBERLEA SANITARY SEWERS  
 CHAMBERLEA SUBDIVISION

**PURDUM & JESCHKE**  
 ENGINEERS  
 1023 N. CALVERT ST.  
 BALTIMORE, MARYLAND

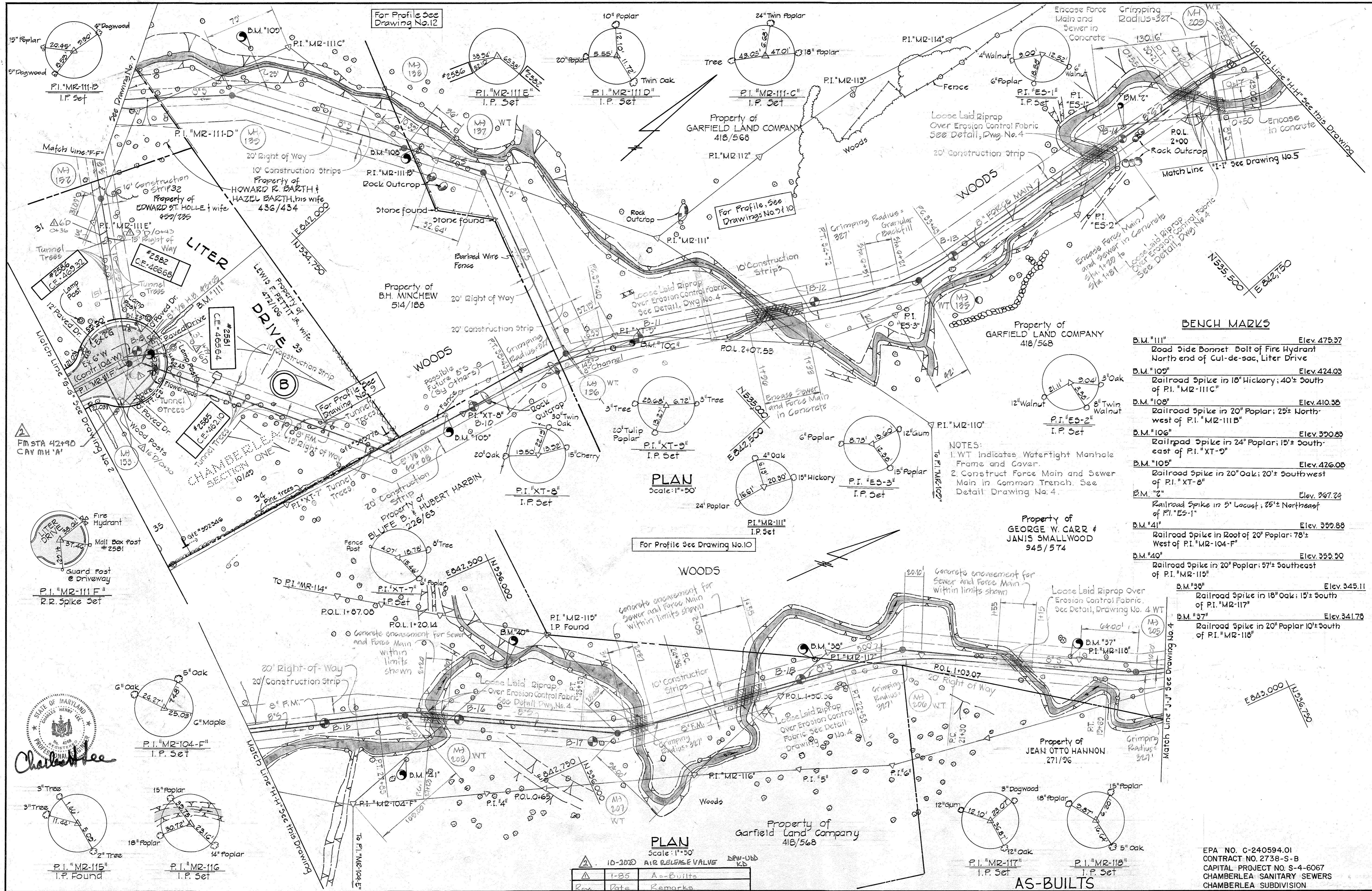
DEPARTMENT OF PUBLIC WORKS  
 HOWARD COUNTY, MARYLAND  
 Chief Bureau of Utilities  
 Director of Public Works

CONTRACT NO. 2738-S-B  
 CAPITAL PROJECT NO. S-4-6067

**PLAN**  
**CHAMBERLEA**  
**SEWER & FORCE MAINS**

**CHAMBERLEA SANITARY SEWERS**  
 ELECTION DISTRICT NO. 2  
 HOWARD COUNTY, MARYLAND

DRAWING NO. 2 OF 12  
 SCALE 1"=50'  
 Designed: RDB  
 Drafted: AEL  
 Checked: REP



**BENCH MARKS**

B.M. "111"	Elev. 475.37
Road Side Bonnet Bolt of Fire Hydrant North end of Cul-de-sac, Liter Drive	
B.M. "109"	Elev. 424.03
Railroad Spike in 18" Hickory; 40'± South of P.I. "M2-111C"	
B.M. "108"	Elev. 410.38
Railroad Spike in 20" Poplar; 25'± North-west of P.I. "M2-111B"	
B.M. "106"	Elev. 390.63
Railroad Spike in 24" Poplar; 15'± South-east of P.I. "XT-9"	
B.M. "105"	Elev. 426.08
Railroad Spike in 20" Oak; 20'± South-west of P.I. "XT-8"	
B.M. "2"	Elev. 367.74
Railroad Spike in 5" Locust; 25'± Northeast of P.I. "ES-1"	
B.M. "41"	Elev. 339.88
Railroad Spike in Root of 20" Poplar; 78'± West of P.I. "M2-104-F"	
B.M. "40"	Elev. 359.90
Railroad Spike in 20" Poplar; 57'± Southeast of P.I. "M2-115"	
B.M. "38"	Elev. 345.11
Railroad Spike in 18" Oak; 15'± South of P.I. "M2-117"	
B.M. "37"	Elev. 341.76
Railroad Spike in 20" Poplar 10'± South of P.I. "M2-118"	

**NOTES:**  
 1. WT Indicates Watertight Manhole Frame and Cover.  
 2. Construct Force Main and Sewer Main in Common Trench. See Detail Drawing No. 4.

**PLAN**  
 Scale: 1"=50'

**PLAN**  
 Scale: 1"=50'

Rev.	Date	Remarks
1	10-20-20	AIR RELEASE VALVE
2	1-85	A-BUILTS

EPA NO. C-240594.01  
 CONTRACT NO. 2738-S-B  
 CAPITAL PROJECT NO. S-4-6067  
 CHAMBERLEA SANITARY SEWERS  
 CHAMBERLEA SUBDIVISION

<b>DRAWING NO.</b>	<b>SCALE</b>	Designed: RDB
3	1"=50'	Drafted: RDB
OF 12		Checked: REP

**PURDUM & JESCHKE**  
 ENGINEERS  
 1023 N. CALVERT ST.  
 BALTIMORE, MARYLAND

DEPARTMENT OF PUBLIC WORKS  
 HOWARD COUNTY, MARYLAND  
 CHIEF-BUREAU OF UTILITIES DATE  
 CHIEF-BUREAU OF ENGINEERING DATE

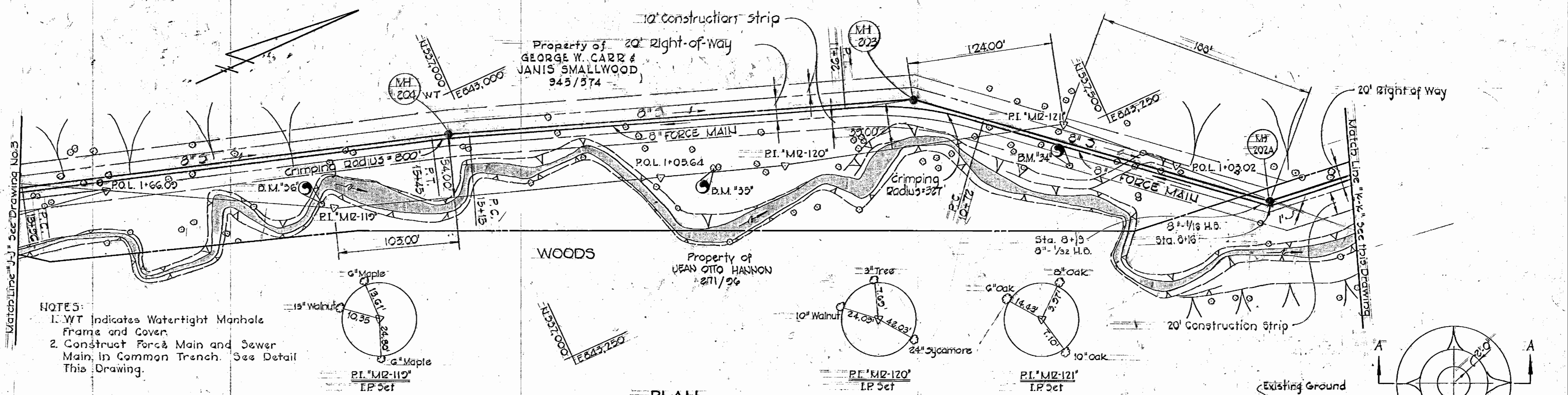
CONTRACT NO. 2738-S-B  
 CAPITAL PROJECT NO. S-4-6067

**PLAN**  
**CHAMBERLEA**  
**SEWER & FORCE MAINS**

**CHAMBERLEA SANITARY SEWERS**  
 ELECTION DISTRICT NO. 2  
 HOWARD COUNTY, MARYLAND

AS-BUILTS

For Profile See Drawing No.10



NOTES:  
 1. WT Indicates Watertight Manhole Frame and Cover.  
 2. Construct Force Main and Sewer Main in Common Trench. See Detail This Drawing.

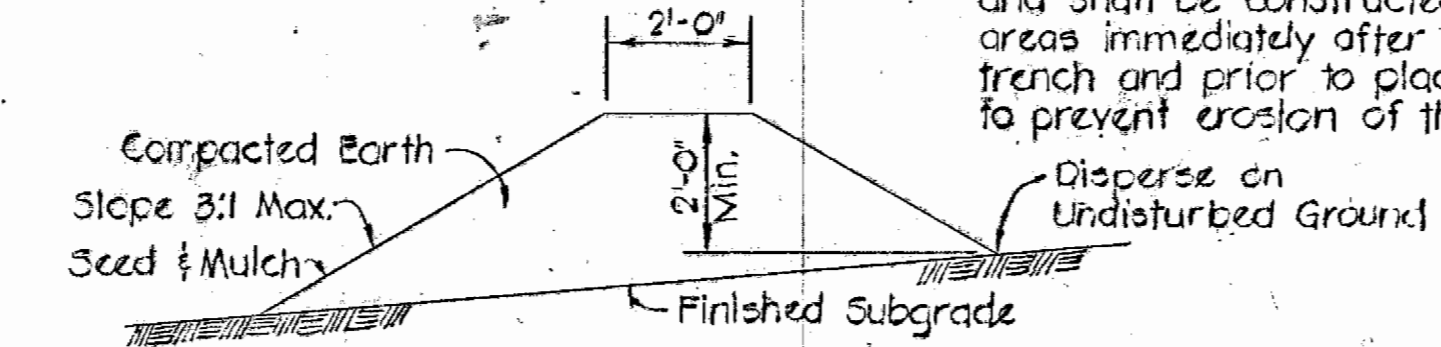
PLAN  
 Scale: 1"=50'

Diversion berms are required every 250' on continuous slopes of 4% or greater. The berms shall conform to the typical section herein and shall be constructed across the construction areas immediately after the backfilling of the pipe trench and prior to placing stabilization in order to prevent erosion of the backfilled areas.

NOTES:  
 1. Trench shall be braced or sheeted as required.  
 2. Provide bearing full length of barrel dig bell holes.  
 3. Contractor shall excavate, install sewer main and backfill trench to invert of force main prior to excavating for force main.

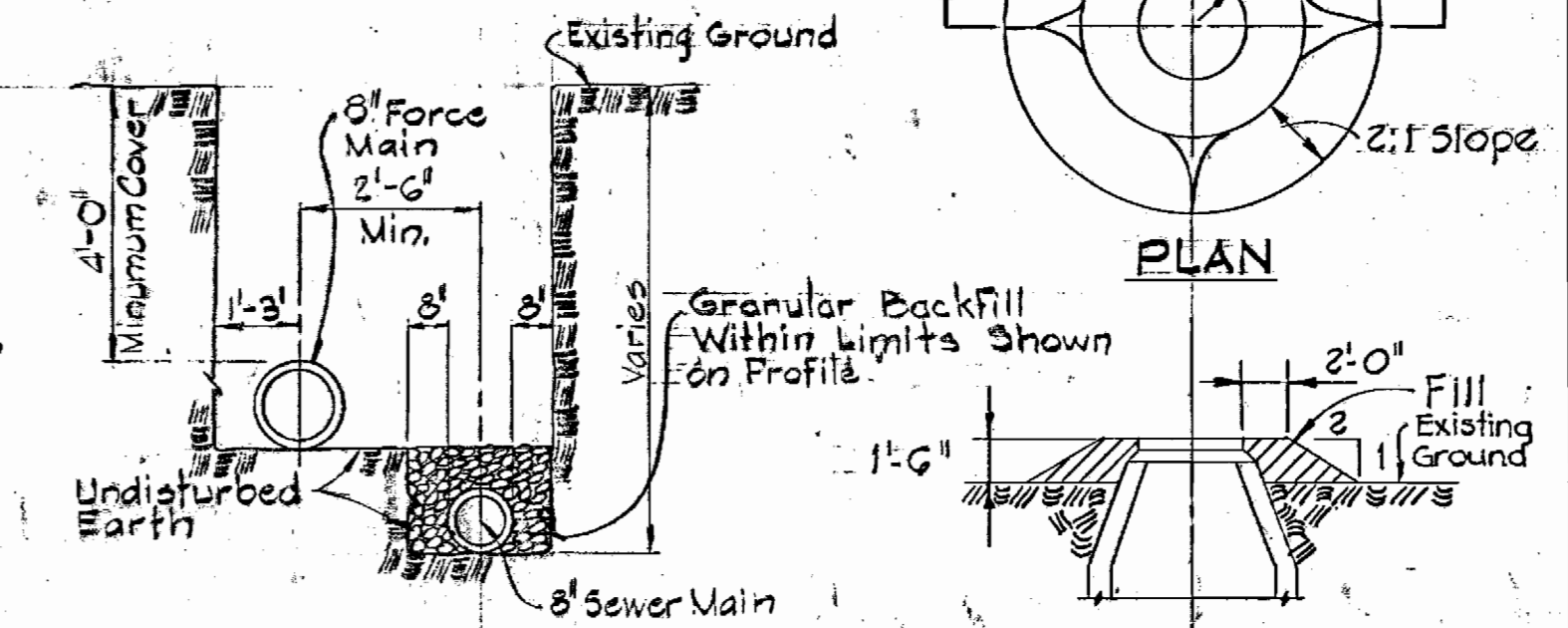
Rip-Rap to consist of dense rocks of random shapes and sizes, resistant to the action of air and water, and suitable for bank protection. All rocks shall weigh a minimum of 100 lbs.

Note:  
 Erosion control fabric shall be Poly-Filter X as manufactured by Carthage Mills, Permacliner M-1195 as manufactured by Staff Industries Inc., or equal.



TEMPORARY EARTH DIVERSION BERM  
 No Scale

LOOSE LAID RIP RAP DETAIL  
 No Scale



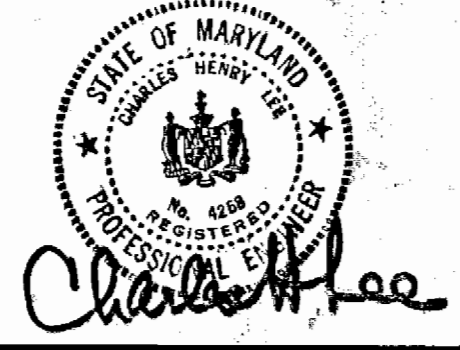
FORCE MAIN AND SEWER MAIN IN COMMON TRENCH  
 Not To Scale  
 FILL AT MANHOLE  
 No Scale

State of Maryland  
 Department of Forests and Parks  
 234/264

BENCH MARKS

- B.M. '31' Elev. 295.20  
Railroad Spike in 20' Beech, 35' South of P.I. 'MR-124'
- B.M. '32' Elev. 303.82  
Railroad Spike in 20' Maple, 52' East of P.I. 'MR-123'
- B.M. '33' Elev. 324.74  
Railroad Spike in 15' Maple, 30' West of P.I. 'MR-122'
- B.M. '34' Elev. 331.85  
Railroad Spike in 20' Sycamore, 35' East of P.I. 'MR-121'
- B.M. '35' Elev. 332.50  
Railroad Spike in 36' Sycamore, 60' South of P.I. 'MR-120'
- B.M. '36' Elev. 332.67  
Railroad Spike in 15' Walnut, 10' South of P.I. 'MR-119'

EPA NO. C-240594.01  
 CONTRACT NO. 2738-S-B  
 CAPITAL PROJECT NO. S-4-6067  
 CHAMBERLEA SANITARY SEWERS  
 CHAMBERLEA SUBDIVISION



PURDUM & JESCHKE  
 ENGINEERS  
 1023 N. CALVERT ST.  
 BALTIMORE, MARYLAND

DEPARTMENT OF PUBLIC WORKS  
 HOWARD COUNTY, MARYLAND  
 CHIEF BUREAU OF UTILITIES  
 DATE: 8-30-77

CONTRACT NO. 2738-S-B  
 CAPITAL PROJECT NO. S-4-6067

PLAN & DETAILS  
 CHAMBERLEA  
 SEWER & FORCE MAINS

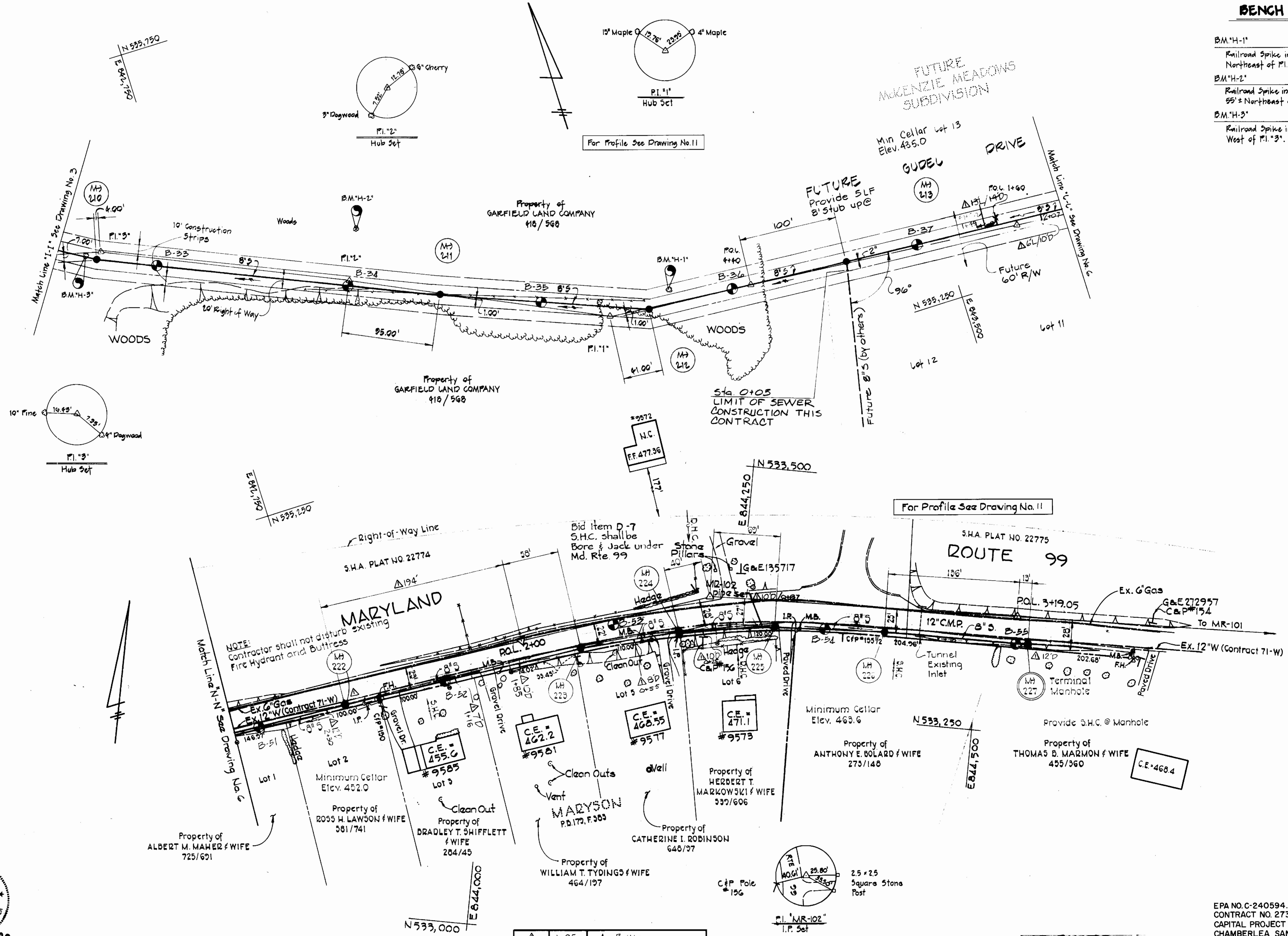
CHAMBERLEA SANITARY SEWERS  
 ELECTION DISTRICT NO. 2  
 HOWARD COUNTY, MARYLAND

DRAWING NO. 4  
 OF 12  
 SCALE AS SHOWN

Designed: RDB  
 Drafted: RDB  
 Checked: REP

**BENCH MARKS**

B.M."H-1"	Elev. 422.52
Railroad Spike in 12' Cherry 55's Northeast of P.I."1"	
B.M."H-2"	Elev. 400.58
Railroad Spike in 10' Twin Maple 55's Northeast of P.I."2"	
B.M."H-3"	Elev. 383.65
Railroad Spike in 10' Pine 16's West of P.I."3"	



Rev.	Date	Remarks
1	1-85	As-Built



**PURDUM & JESCHKE**  
ENGINEERS  
1023 N. CALVERT ST.  
BALTIMORE, MARYLAND

DEPARTMENT OF PUBLIC WORKS  
HOWARD COUNTY, MARYLAND  
CHIEF BUREAU OF UTILITIES DATE 8-29-81  
DIRECTOR OF PUBLIC WORKS DATE 8-30-77  
CHIEF BUREAU OF ENGINEERING DATE 8-29-77

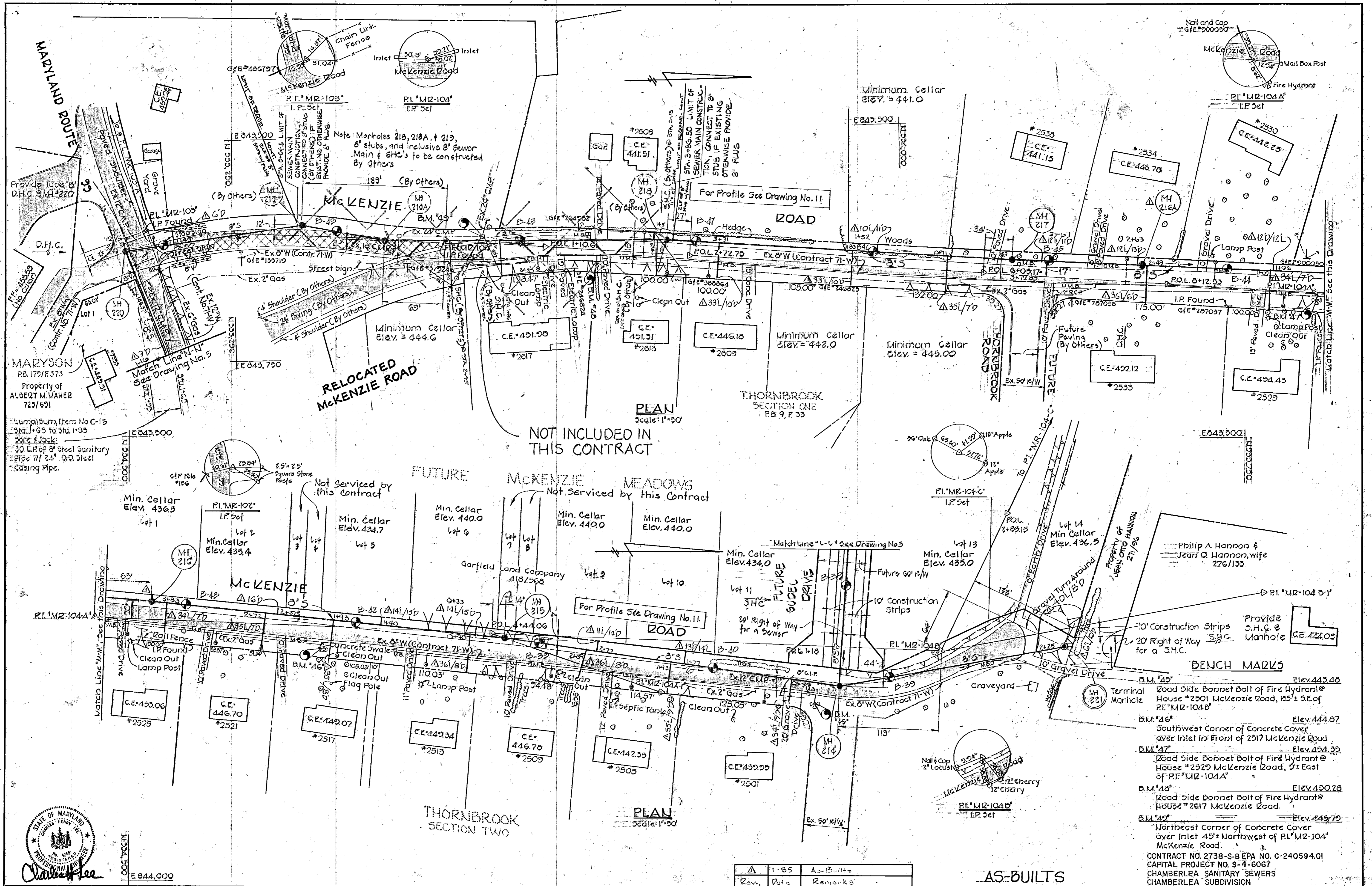
CONTRACT NO. 738-S-B  
CAPITAL PROJECT NO. S-4-6067

**PLAN**  
**CHAMBERLEA SEWER MAINS**

**CHAMBERLEA SANITARY SEWERS**  
ELECTION DISTRICT NO. 2  
HOWARD COUNTY, MARYLAND

DRAWING NO. 5 OF 12

SCALE 1"=50'  
Designed: LKG  
Drafted: REC  
Checked: REP



NOT INCLUDED IN THIS CONTRACT

PLAN  
Scale: 1"=50'

PLAN  
Scale: 1"=50'

Rev.	Date	Remarks
1-85		As-Built

AS-BUILTS

CONTRACT NO. 2738-S-B  
CAPITAL PROJECT NO. S-4-6067

CHAMBERLEA SANITARY SEWERS  
ELECTION DISTRICT NO. 2  
HOWARD COUNTY, MARYLAND

DRAWING NO. 6 OF 12  
SCALE 1"=50'  
Designed: RDB  
Drafted: RDB  
Checked: REP

CONTRACT NO. 2738-S-B EPA NO. C-240594.01  
CAPITAL PROJECT NO. S-4-6067  
CHAMBERLEA SANITARY SEWERS  
CHAMBERLEA SUBDIVISION



**PURDUM & JESCHKE**  
ENGINEERS  
1023 N. CALVERT ST.  
BALTIMORE, MARYLAND

DEPARTMENT OF PUBLIC WORKS  
HOWARD COUNTY, MARYLAND  
8-30-77  
DIRECTOR OF PUBLIC WORKS DATE

CONTRACT NO. 2738-S-B  
CAPITAL PROJECT NO. S-4-6067

PLAN  
CHAMBERLEA SEWER MAINS

CHAMBERLEA SANITARY SEWERS  
ELECTION DISTRICT NO. 2  
HOWARD COUNTY, MARYLAND

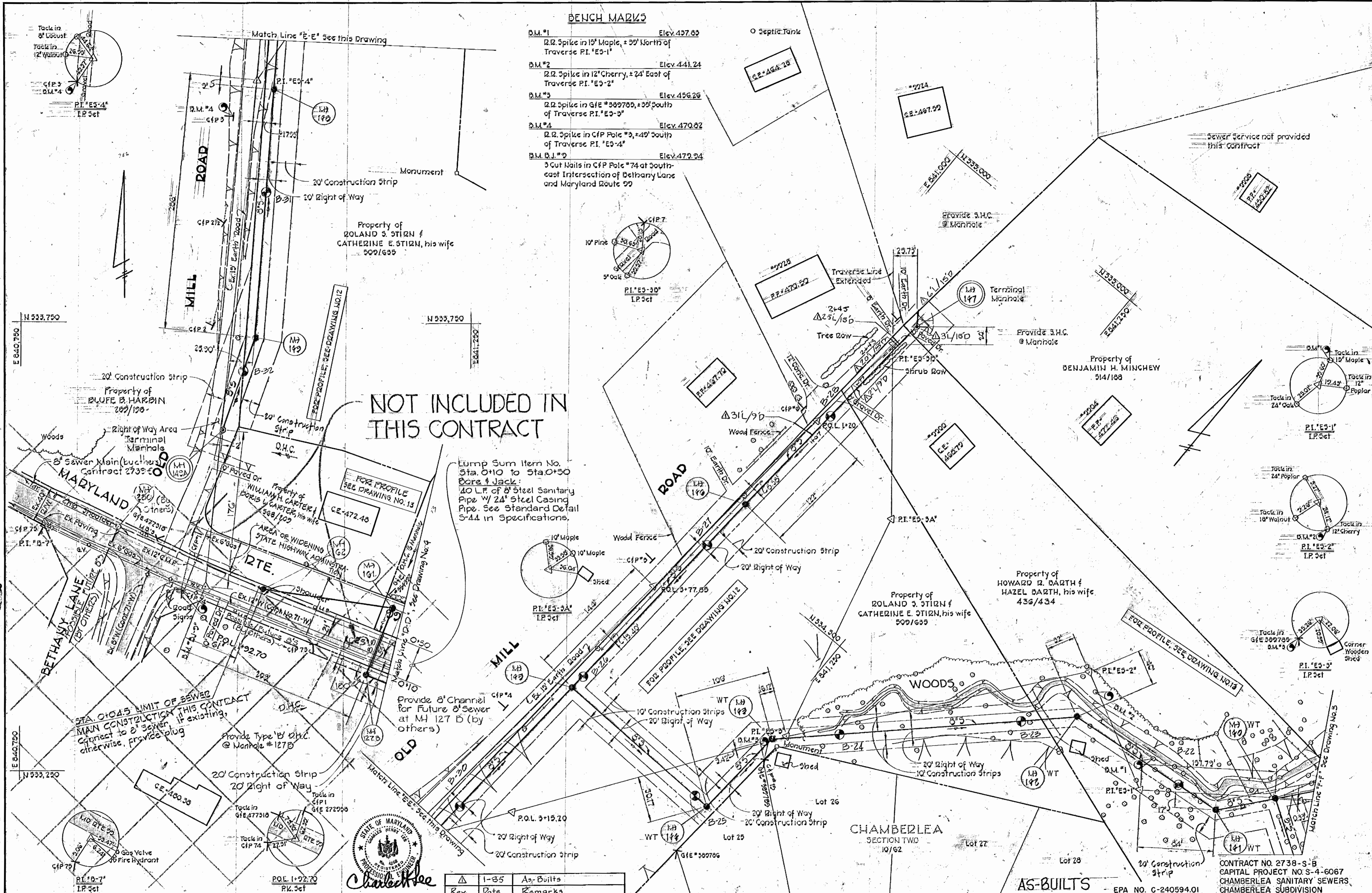
DRAWING NO. 6 OF 12  
SCALE 1"=50'  
Designed: RDB  
Drafted: RDB  
Checked: REP

**BENCH MARKS**

- B.M.#1 Elev. 437.63  
2.2 Spike in 18" Maple, ± 39' North of Traverse P.I. "E5-1"
- B.M.#2 Elev. 441.24  
2.2 Spike in 12" Cherry, ± 24' East of Traverse P.I. "E5-2"
- B.M.#3 Elev. 456.26  
2.2 Spike in G.F.E. #389785, ± 35' South of Traverse P.I. "E5-3"
- B.M.#4 Elev. 470.82  
2.2 Spike in C.F.P. Pole #3, ± 40' South of Traverse P.I. "E5-4"
- B.M. B.I.#2 Elev. 472.94  
3 Cut Nails in C.F.P. Pole #74 at Southeast Intersection of Chamberlea Lane and Maryland Route 29

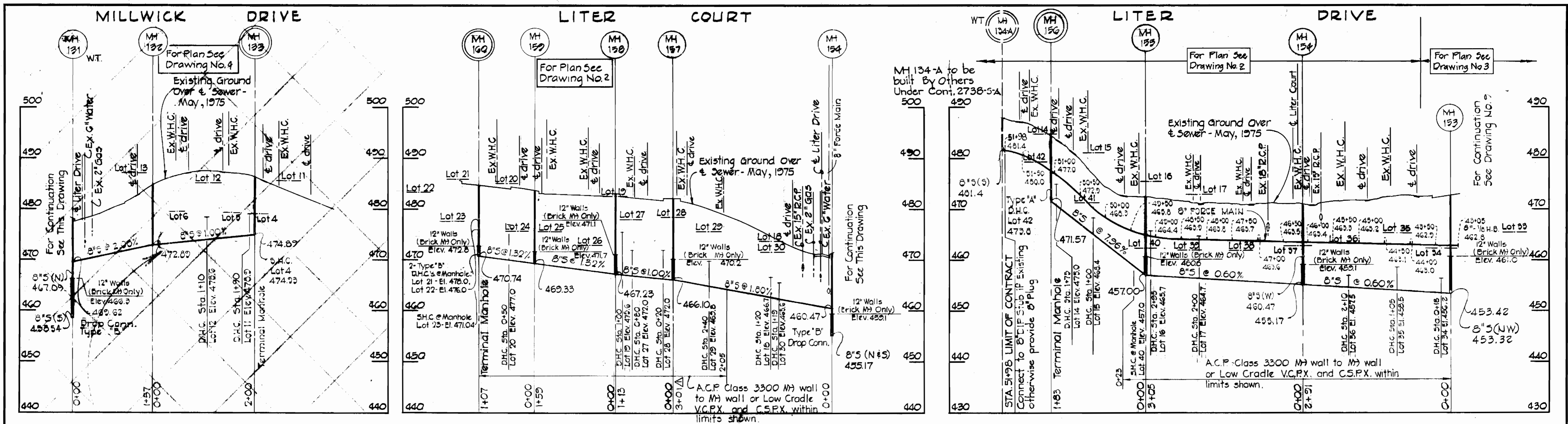
**NOT INCLUDED IN THIS CONTRACT**

Lump Sum Item No. Sta. 0+10 to Sta. 0+50  
Bore & Jack:  
40 L.F. of 8" Steel Sanitary Pipe w/ 24" Steel Casing Pipe. See Standard Detail S-44 in Specifications.



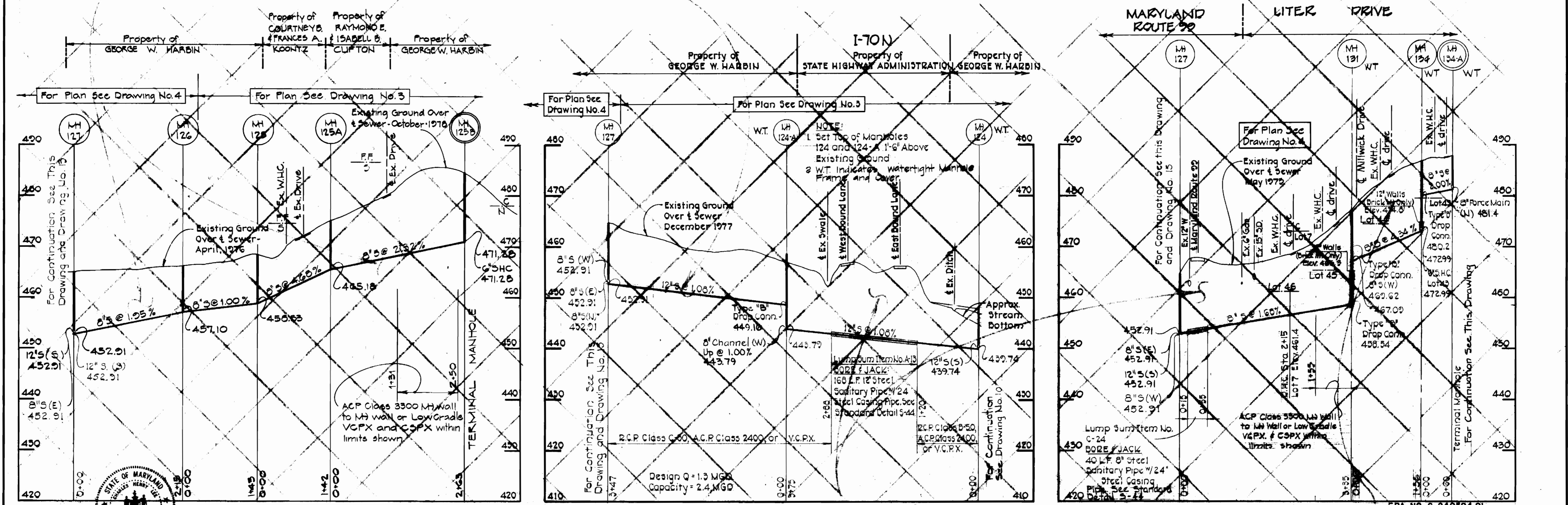
Rev.	Date	Remarks
1	1-85	As-Built

<b>PURDUM &amp; JESCHKE</b> ENGINEERS 1023 N. CALVERT ST. BALTIMORE, MARYLAND	DEPARTMENT OF PUBLIC WORKS HOWARD COUNTY, MARYLAND CHIEF BUREAU OF UTILITIES DATE: 8-30-77 DIRECTOR OF PUBLIC WORKS	CONTRACT NO. 2738-S-B CAPITAL PROJECT NO. S-4-6067	<b>PLAN</b> <b>CHAMBERLEA SEWER MAINS</b>	<b>CHAMBERLEA SANITARY SEWERS</b> ELECTION DISTRICT NO. 2 HOWARD COUNTY, MARYLAND	DRAWING NO. 7 OF 12 SCALE 1"=50' Designed: REP Drafted: ARZ Checked: REP
--	---	---	--	---	--



NOT INCLUDED IN THIS CONTRACT

**PROFILES**  
 Horiz. 1"=100'  
 Vert. 1"=10'



**PROFILES**  
 Horiz. 1"=100'  
 Vert. 1"=10'

NOT INCLUDED IN THIS CONTRACT  
 AS-BUILTS

EPA NO. C-240594.01  
 CONTRACT NO. 2758-S-B  
 CAPITAL PROJECT NO. S-4-6067  
 CHAMBERLEA SANITARY SEWERS  
 CHAMBERLEA SUBDIVISION



**PURDUM & JESCHKE**  
 ENGINEERS  
 1023 N. CALVERT ST.  
 BALTIMORE, MARYLAND

DEPARTMENT OF PUBLIC WORKS  
 HOWARD COUNTY, MARYLAND  
 CHIEF-BUREAU OF UTILITIES DATE  
 DIRECTOR OF PUBLIC WORKS DATE

CONTRACT NO. **A738-S-B**  
 CAPITAL PROJECT NO. **S-4-6067**

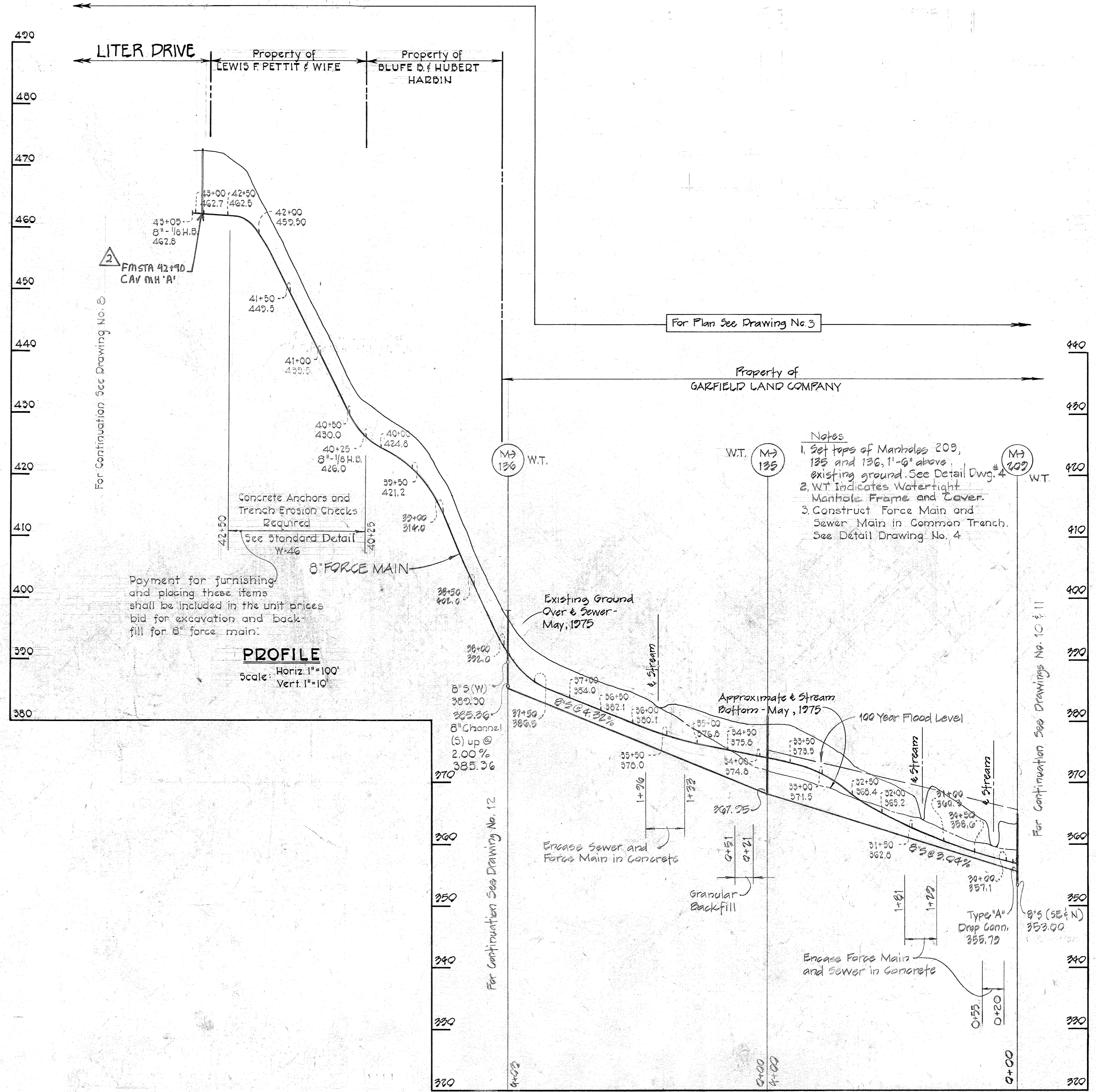
**PROFILES**  
**CHAMBERLEA SEWER MAINS**

**CHAMBERLEA SANITARY SEWERS**  
 ELECTION DISTRICT NO. 2  
 HOWARD COUNTY, MARYLAND

DRAWING NO. **8**  
 OF **12**  
 SCALE: **As Shown**  
 Designed: RDB  
 Drafted: AEL  
 Checked: REP



WS 738 S-B/9



Payment for furnishing and placing these items shall be included in the unit prices bid for excavation and backfill for 8" force main.

**PROFILE**  
Scale: Horiz. 1"=100'  
Vert. 1"=10'

- Notes**
1. Set tops of Manholes 209, 135 and 136, 1'-6" above existing ground. See Detail Dwg. # 4.
  2. WT indicates Watertight Manhole Frame and Cover.
  3. Construct Force Main and Sewer Main in Common Trench. See Detail Drawing No. 4.



**PURDUM & JESCHKE**  
ENGINEERS  
1023 N. CALVERT ST.  
BALTIMORE, MARYLAND

DEPARTMENT OF PUBLIC WORKS  
HOWARD COUNTY, MARYLAND  
8-30-77  
DATE

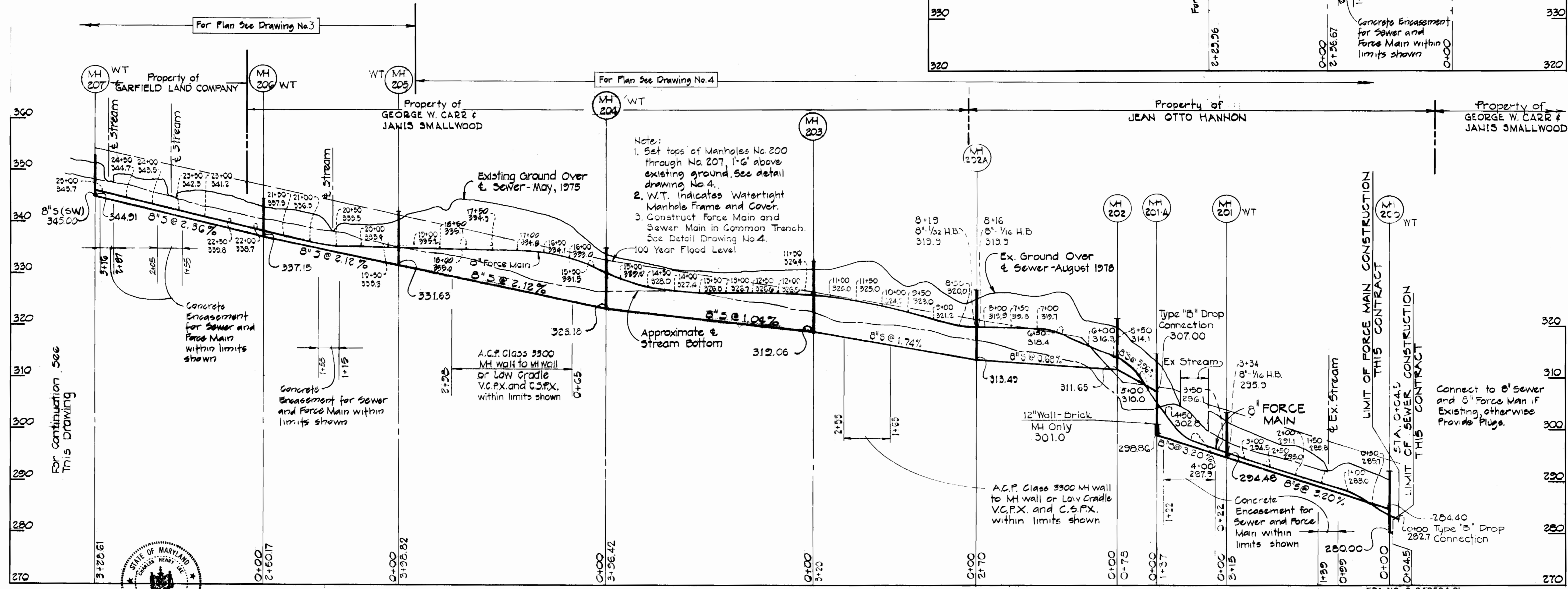
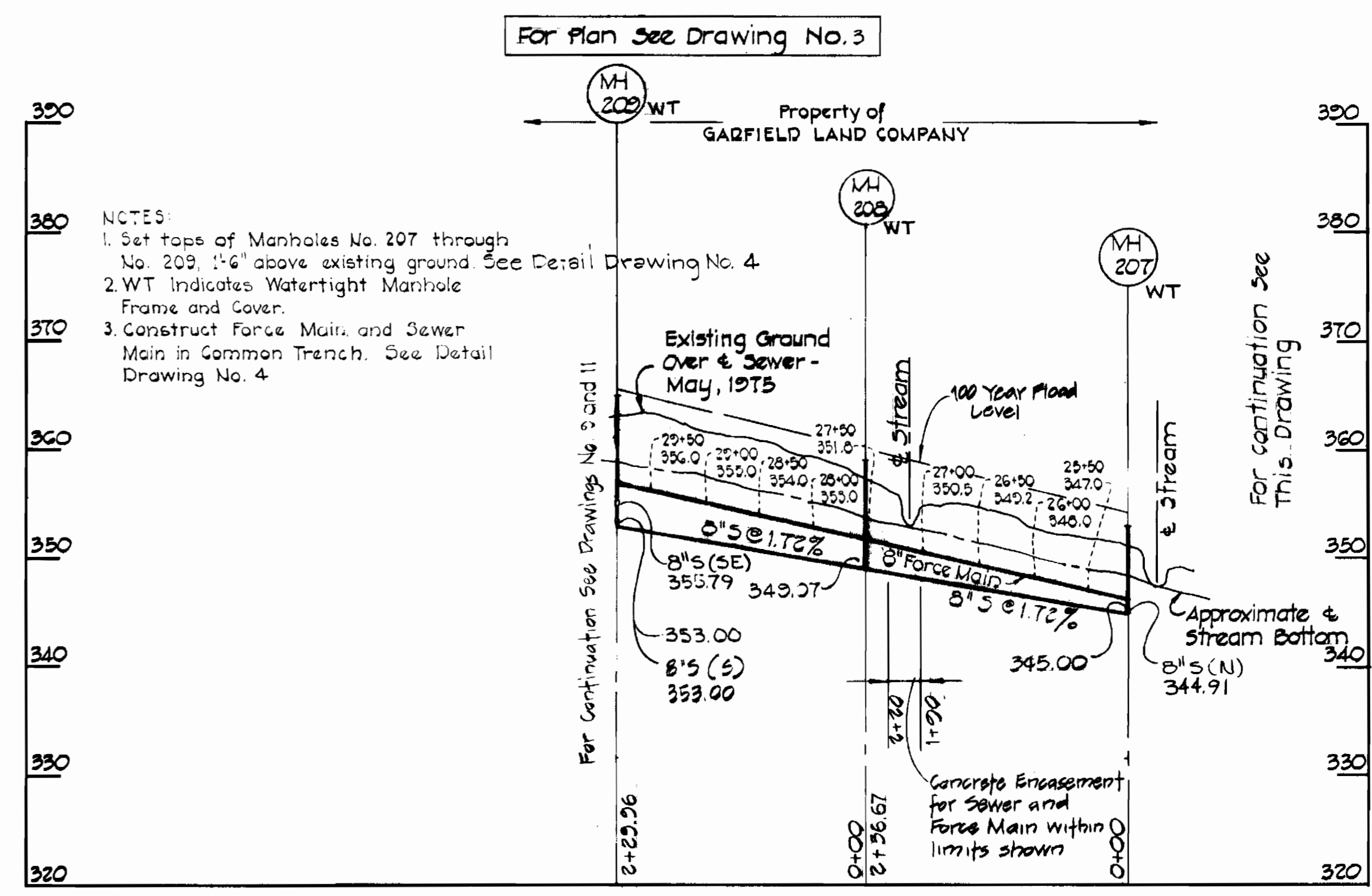
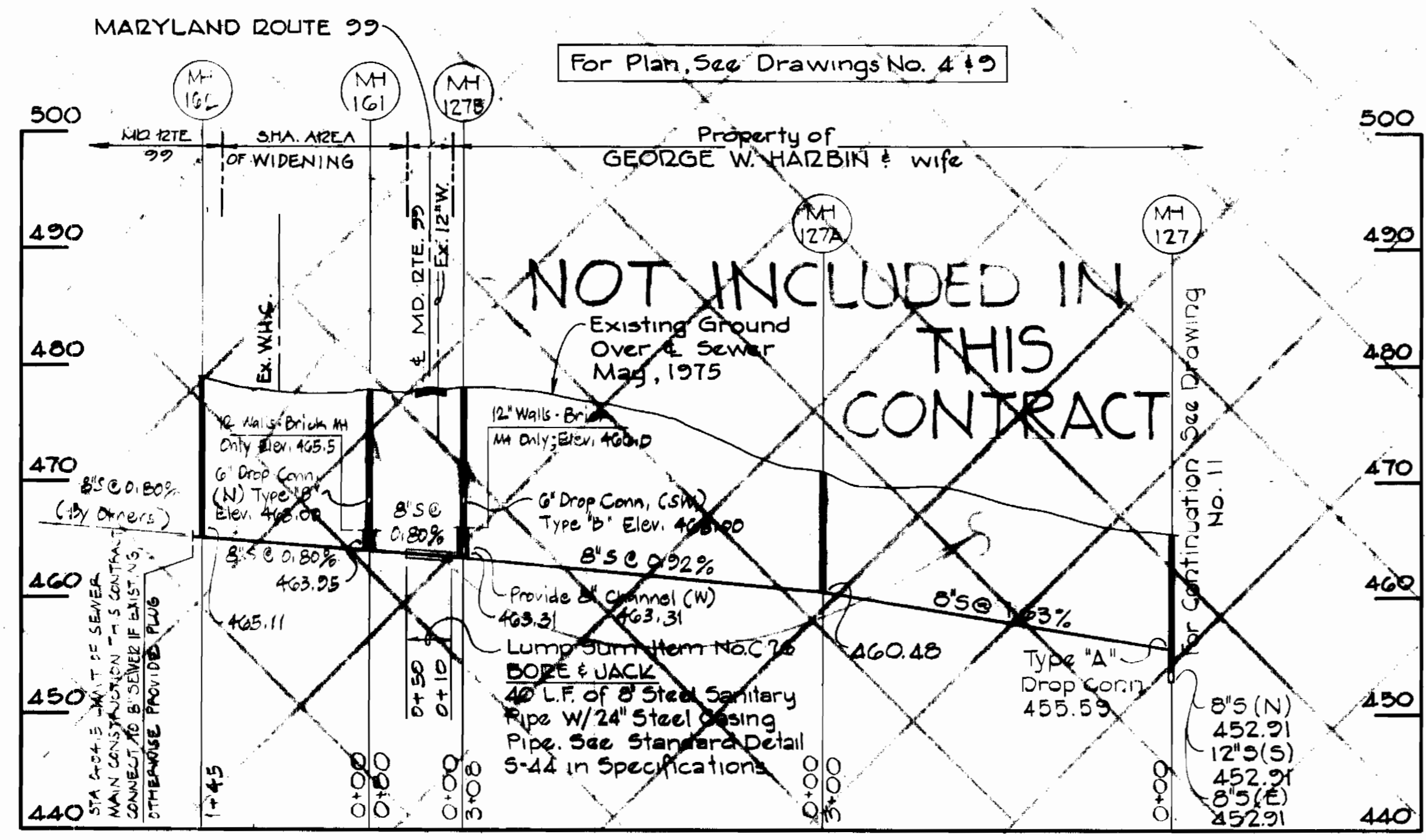
CONTRACT NO. 738-S-B  
CAPITAL PROJECT NO. S-4-6067

**PROFILE & DETAILS**  
**CHAMBERLEA**  
**SEWER & FORCE MAINS**

**CHAMBERLEA SANITARY SEWERS**  
ELECTION DISTRICT NO. 2  
HOWARD COUNTY, MARYLAND

DRAWING NO. 9 OF 12  
SCALE As Shown

EPA NO. C-240594.01  
CONTRACT NO. 2738-S-B  
CAPITAL PROJECT NO. S-4-6067  
CHAMBERLEA SANITARY SEWERS  
CHAMBERLEA SUBDIVISION



**PROFILE**  
 Horiz: 1"=100'  
 Vert: 1"=10'



EPA NO. C-240594.01  
 CONTRACT NO. 2738-S-B  
 CAPITAL PROJECT S-4-6067  
 CHAMBERLEA SANITARY SEWERS  
 CHAMBERLEA SUBDIVISION

**PURDUM & JESCHKE**  
 ENGINEERS  
 1023 N. CALVERT ST.  
 BALTIMORE, MARYLAND

DEPARTMENT OF PUBLIC WORKS  
 HOWARD COUNTY, MARYLAND  
 Chief-Bureau of Utilities Date: 8-30-77  
 Chief-Bureau of Engineering Date: 8-24-77

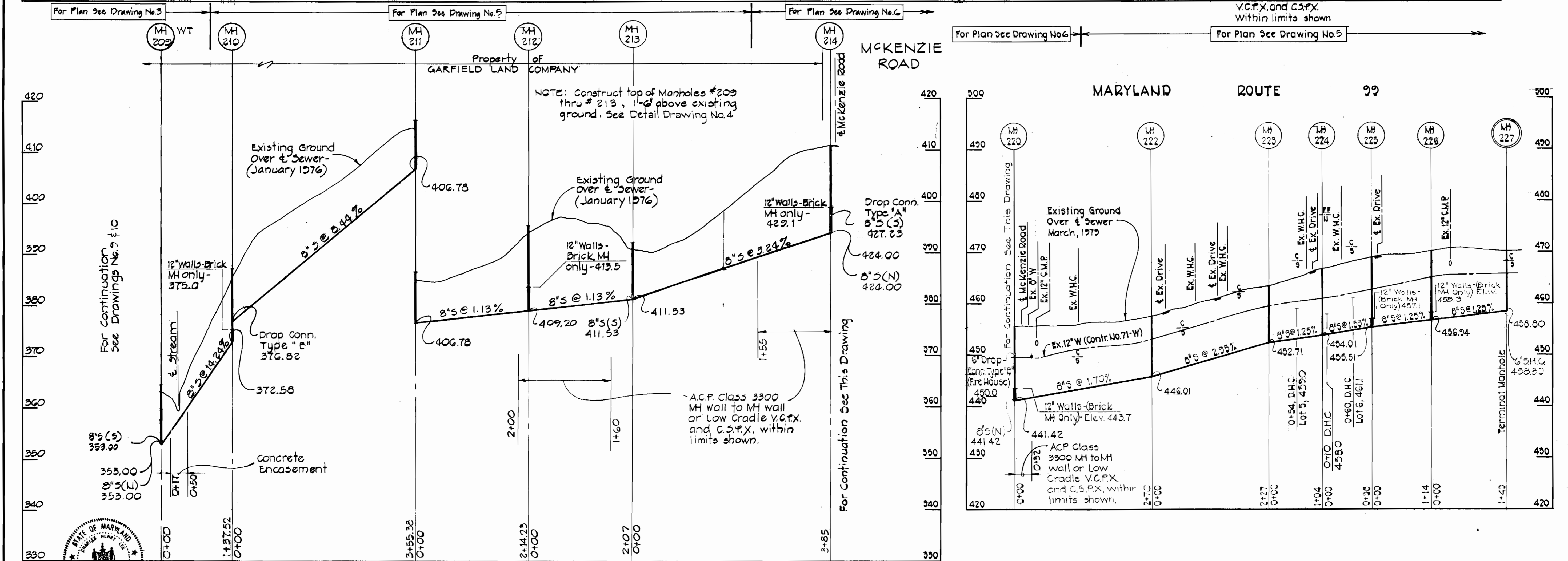
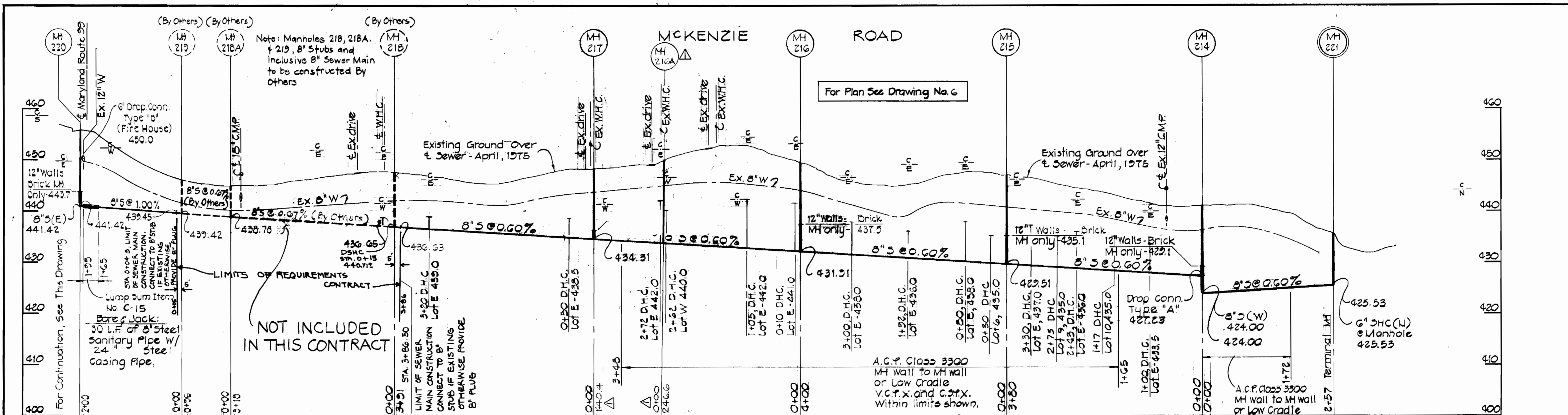
CONTRACT NO. 2738-S-B  
 CAPITAL PROJECT NO. S-4-6067

**PROFILES**  
**CHAMBERLEA**  
**SEWER & FORCE MAINS**

**CHAMBERLEA SANITARY SEWERS**  
 ELECTION DISTRICT NO. 2  
 HOWARD COUNTY, MARYLAND

DRAWING NO. 10 OF 12  
 SCALE As Shown

Designed: RDB  
 Drafted: AEL  
 Checked: REP



**PURDUM & JESCHKE**  
 ENGINEERS  
 1023 N. CALVERT ST.  
 BALTIMORE, MARYLAND

DEPARTMENT OF PUBLIC WORKS  
 HOWARD COUNTY, MARYLAND  
 Chief - Bureau of Utilities  
 Director of Public Works

CONTRACT NO. 2738-S-B  
 CAPITAL PROJECT NO. S-4-6067

**PROFILES**  
 Scale: Horiz. 1"=100'  
 Vert. 1"=10'

REV.	DATE	REMARKS
1-85		AS-BUILTS

**PROFILES**  
**CHAMBERLEA SEWER MAINS**

AS-BUILTS

**CHAMBERLEA SANITARY SEWERS**  
 ELECTION DISTRICT NO. 2  
 HOWARD COUNTY, MARYLAND

EPA NO. C-240594.01  
 CONTRACT NO. 2738-S-B  
 CAPITAL PROJECT NO. S-4-6067  
 CHAMBERLEA SANITARY SEWERS  
 CHAMBERLEA SUBDIVISION

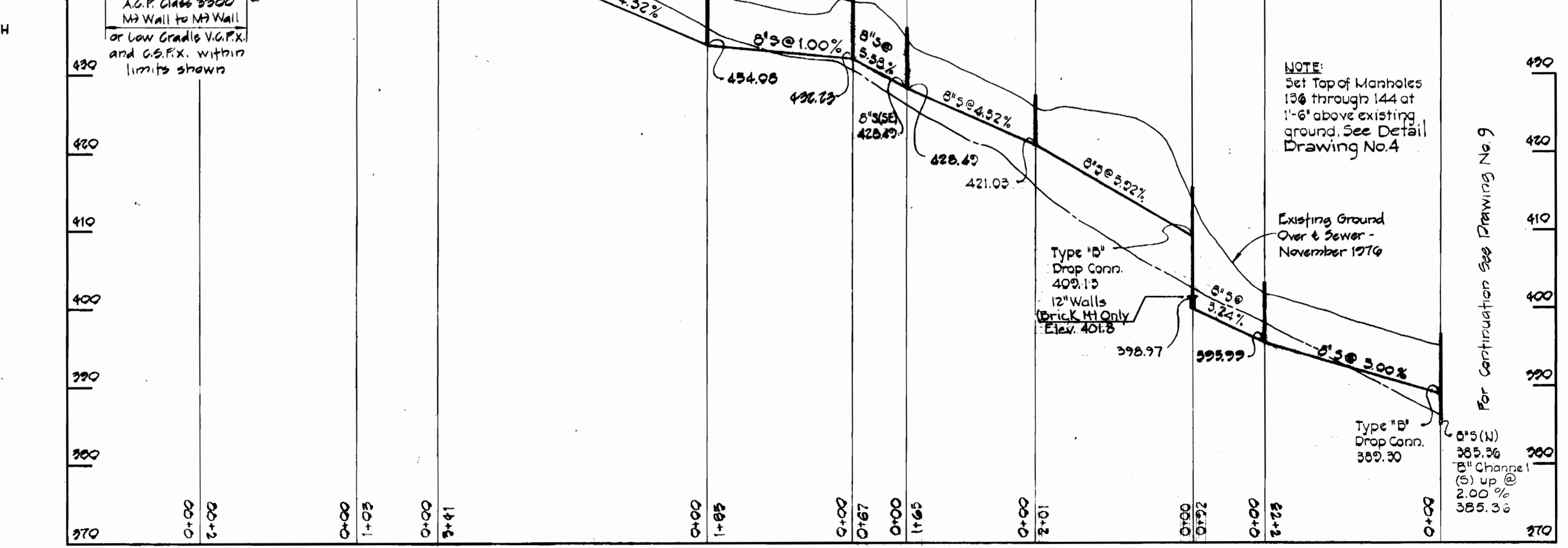
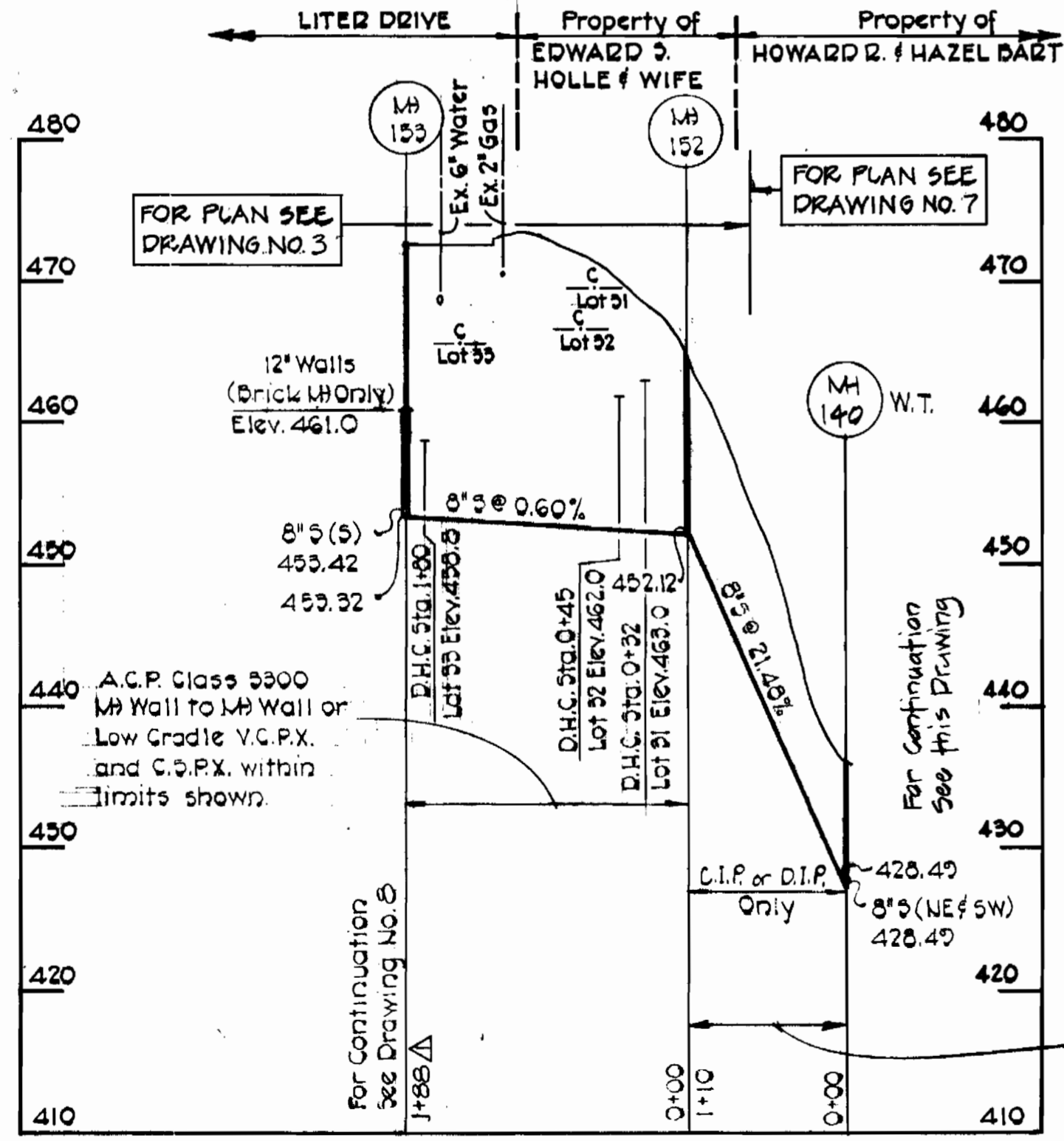
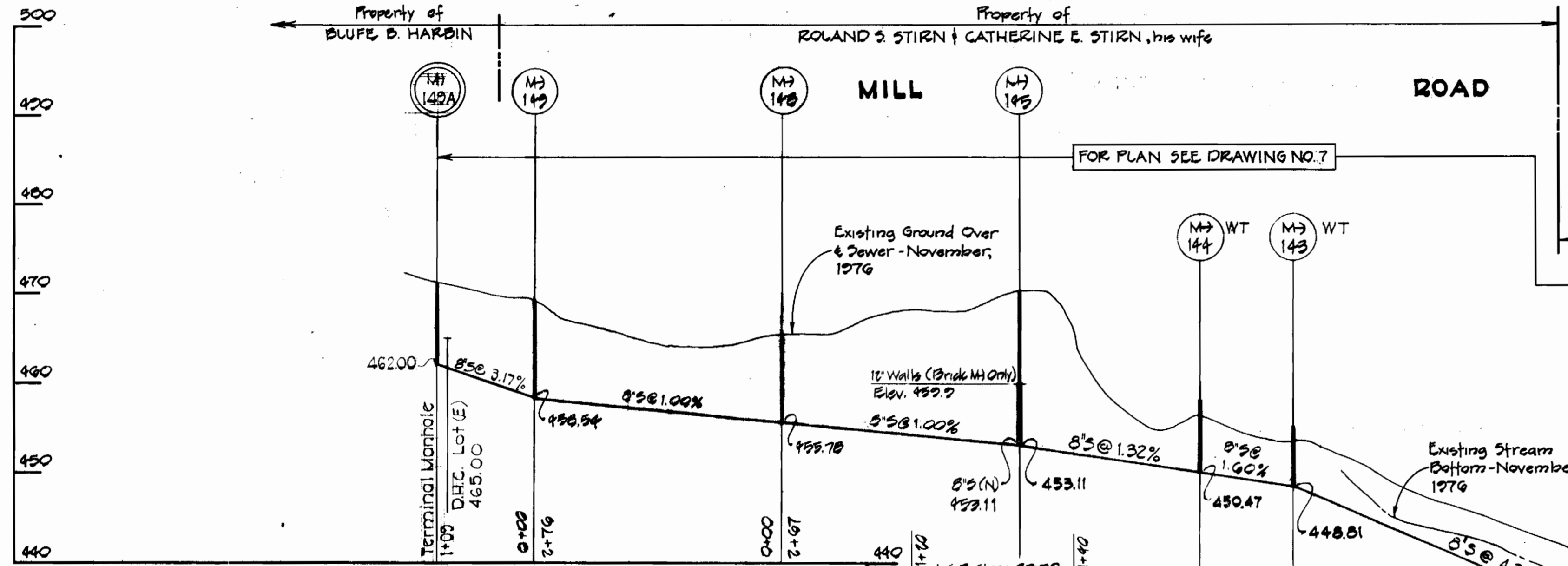
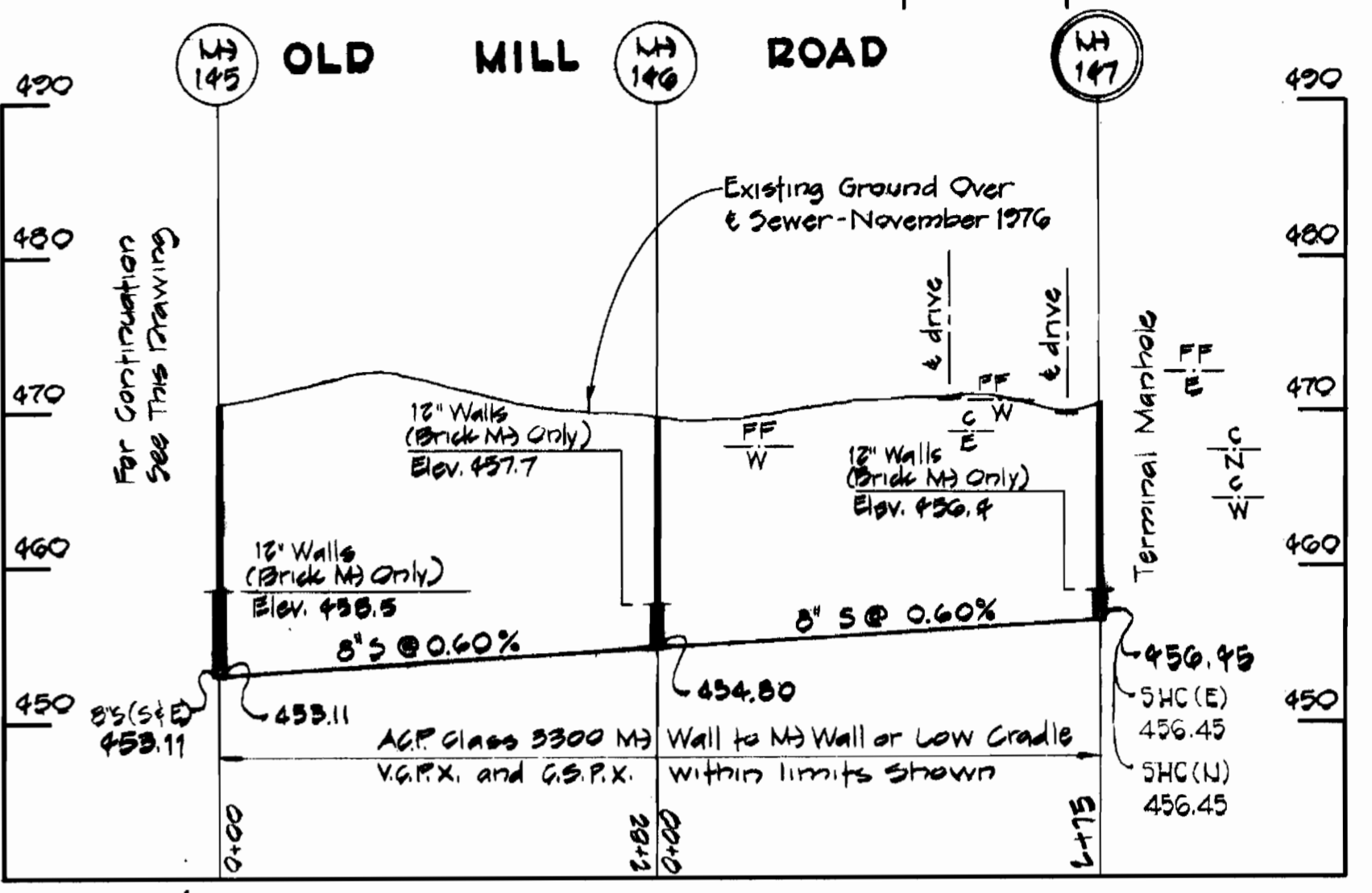
DRAWING NO. 11 OF 12  
 SCALE: As Shown

Designed: RDB  
 Drafted: RDB  
 Checked: REP

FOR PLAN SEE DRAWING NO. 7

Property of HOWARD R. BARTH & HAZEL BARTH, his wife

Property of ROLAND S. STIRN & CATHERINE E. STIRN, his wife | Property of BENJAMIN H. MINGHEW



NOTE: Set Top of Manholes 136 through 144 at 1'-6" above existing ground. See Detail Drawing No. 4

Existing Ground Over & Sewer - November 1976

EPA NO. C-240594.01  
CONTRACT NO. 2738-S-B  
CAPITAL PROJECT NO. S-4-6067  
CHAMBERLEA SANITARY SEWERS  
CHAMBERLEA SUBDIVISION

PROFILES  
Scale: Horiz. 1"=100'  
Vert. 1"=10'

Rev.	Date	Remarks
1-85		As-Built

AS-BUILTS



PURDUM & JESCHKE  
ENGINEERS  
1023 N. CALVERT ST.  
BALTIMORE, MARYLAND

DEPARTMENT OF PUBLIC WORKS  
HOWARD COUNTY, MARYLAND  
CHIEF BUREAU OF UTILITIES  
DATE 8-23-77

CONTRACT NO. 2738-S-B  
CAPITAL PROJECT NO. S-4-6067

PROFILES  
CHAMBERLEA SEWER MAINS

CHAMBERLEA SANITARY SEWERS  
ELECTION DISTRICT NO. 2  
HOWARD COUNTY, MARYLAND

DRAWING NO. 12  
SCALE As Shown  
Designed: TAF  
Drafted: REC  
Checked: REP