

VICINITY MAP  
Scale: 1"=1000'

- GENERAL NOTES**
- Approximate locations of existing utilities are shown. The Contractor shall take all necessary precautions to protect the existing utilities and to maintain uninterrupted service. Any damage incurred due to the Contractor's operation shall be repaired immediately at the Contractor's expense.
  - All pipe elevations shown are invert elevations.
  - The Contractor shall locate existing utilities well in advance of construction activities.
  - See standard details bound in specifications.
  - Clear all utilities by a minimum of 6 inches. Clear all utility poles by 2'-0" minimum or tunnel as required. Any costs incurred to the Contractor for tunneling or bracing poles shall be included in unit price bid for excavation.
  - The Contractor shall provide a pipe joint in all sewer mains within 2'-0" of exterior manhole walls.
  - All manholes shall be 4'-0" inside diameter, unless otherwise noted.
  - Buttress or anchor all water main fittings with concrete. All valves shall be strapped to tees in accordance with standard details.
  - All water mains to have a minimum of 3.5' cover unless otherwise noted.
  - All fire hydrants shall be strapped to the tee and shall be buttressed with concrete in accordance with standard details. Cost of strapping fire hydrants and valves to be included in the unit price bid for furnishing and installing fire hydrants. Soil around the fire hydrant to be compacted in accordance with Section 5-15 of the Standard Specifications.
  - Bury line elevations on fire hydrants shall be set to the elevations shown on the plan.
  - All horizontal controls are based on Maryland State Coordinates.
  - All vertical controls are based on Maryland State Datum.
  - Cellar elevations were established by W. Stanley Wachen, Land Surveyor. CONTRACT NO. X734-D-W&S BEAVERBROOK SUBDIVISION SECTION 10 - AREA 3 WATER & SEWER MAIN EXTENSION

- BENCH MARKS**
- TP #1 ELEV. 358.89  
60 penny nail in 14" thorn tree on Lot 17 Block E, Section 10, Area 2, Beaverbrook; 200'± south of intersection Lake Circle West & Durham Road West.
- TP #2 ELEV. 377.78  
60 penny nail in 8" cherry tree 15'± west of Traverse Station #107 on east side Durham Road West 250'± south of Castle Moor Drive.
- TP #3 ELEV. 354.53  
1" cut on rim of sanitary sewer manhole 60'± west of east property line 450'± north of Castle Moor Drive.
- Concrete Monument ELEV. 372.98  
Traverse Station #4, 30'± east of east property line 720'± north of Castle Moor Drive.

BEAVERBROOK COMMUNITY ASSOCIATION, INC.  
PARCEL 2 422/488

PLAN  
Scale: 1"=50'

6" 48" Sewer - ACP - Class 2400 - JOHNS MANVILLE  
8" Sewer - ACP - Class 3300 - " "  
6" 48" Water - DIP - U.S. PIPE  
Note: "B" = Board

QUANTITIES		
ITEM	PROPOSED	AS-BUILT
8" Water	665 L.F.	667 L.F.
6" Water	695 L.F.	675 L.F.
Fire Hydrants	3 Ea.	3
8" Sewer	1630 L.F.	1627 L.F.
6" Sewer	455 L.F.	451 L.F.

PURDUM & JESCHKE  
ENGINEERS  
1023 N. CALVERT ST.  
BALTIMORE, MARYLAND

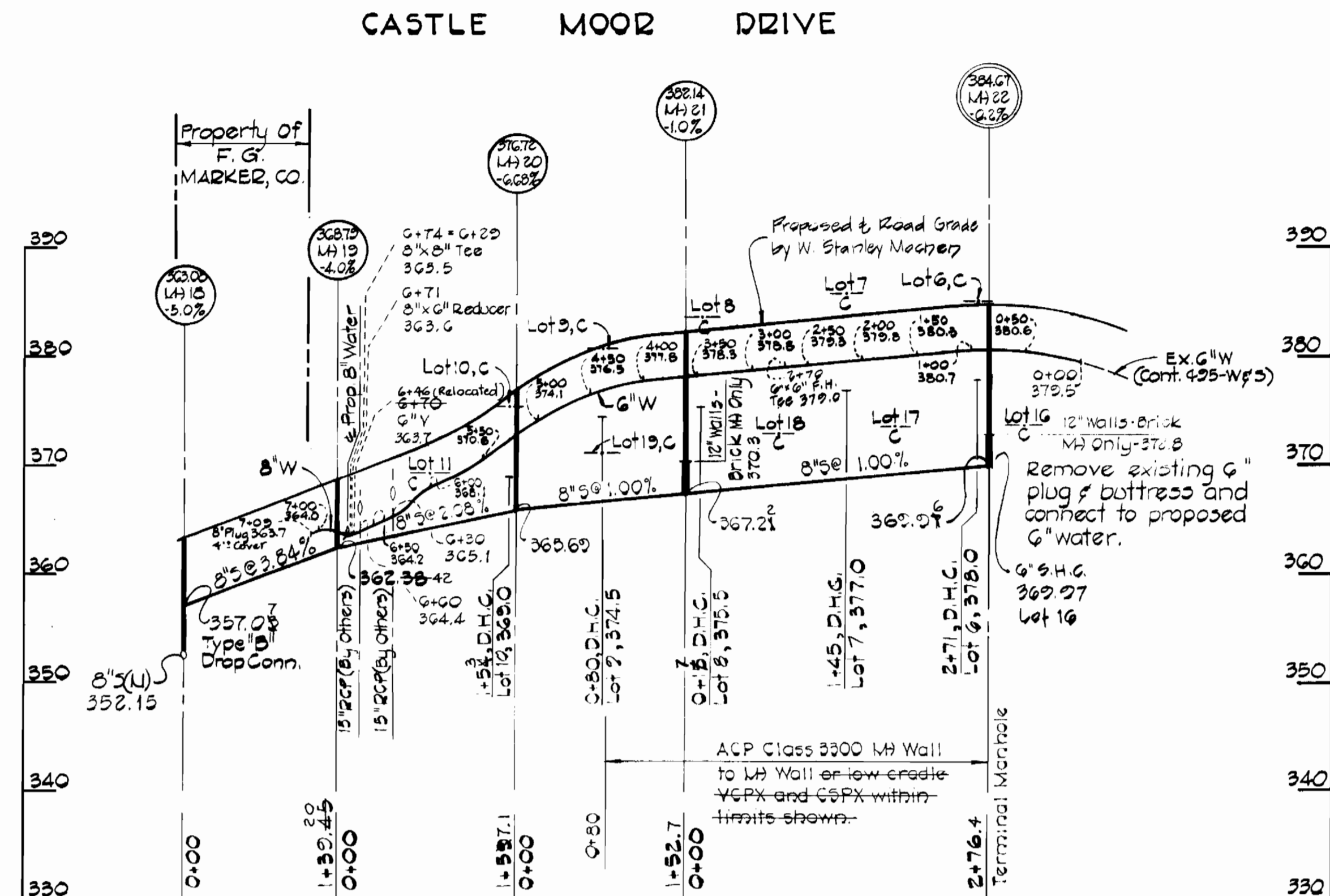
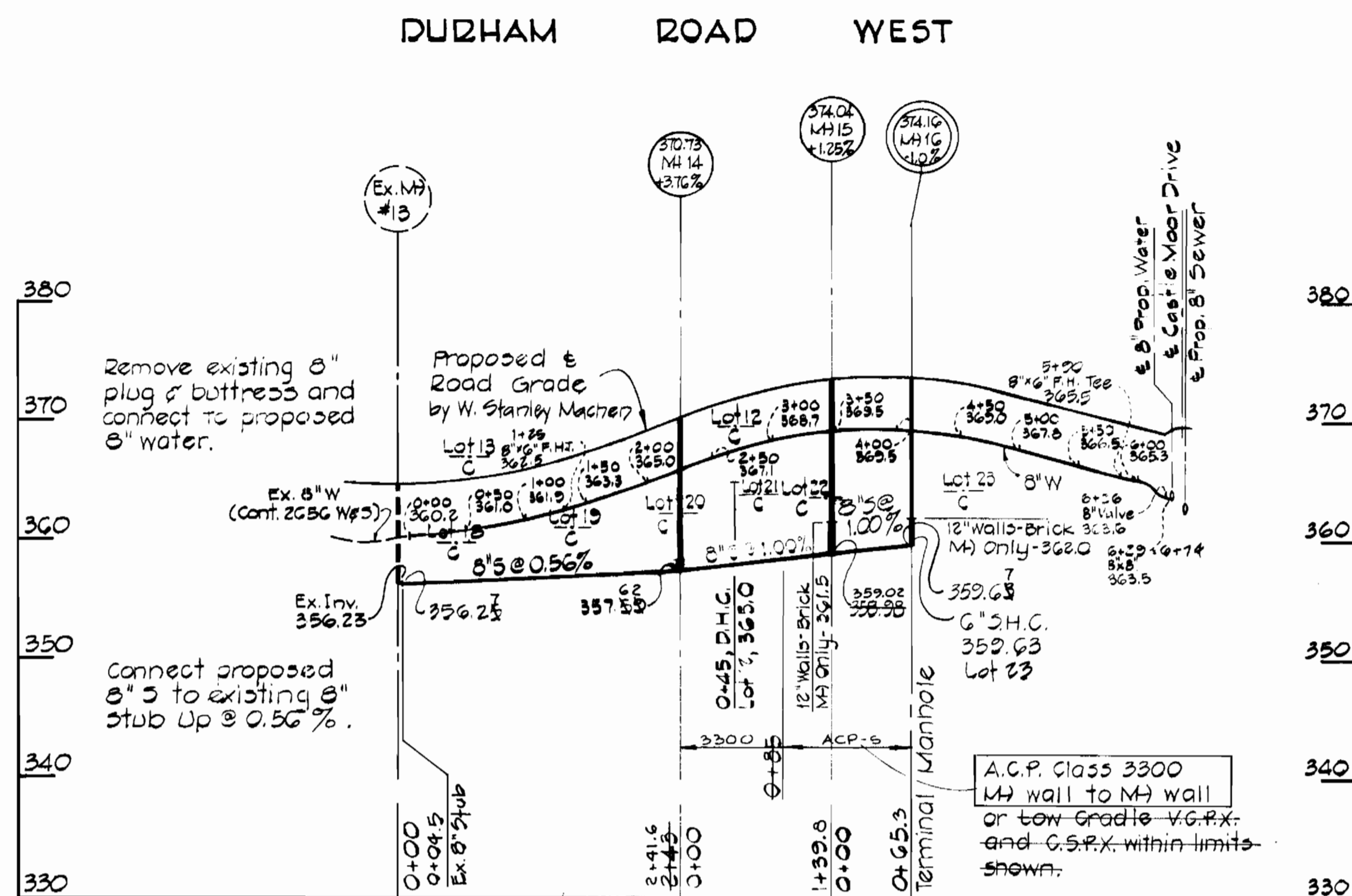
DEPARTMENT OF PUBLIC WORKS  
HOWARD COUNTY, MARYLAND  
6-1-77  
DIRECTOR OF PUBLIC WORKS DATE CHIEF BUREAU OF ENGINEERING DATE

CONTRACT NO. X734-D-W&S

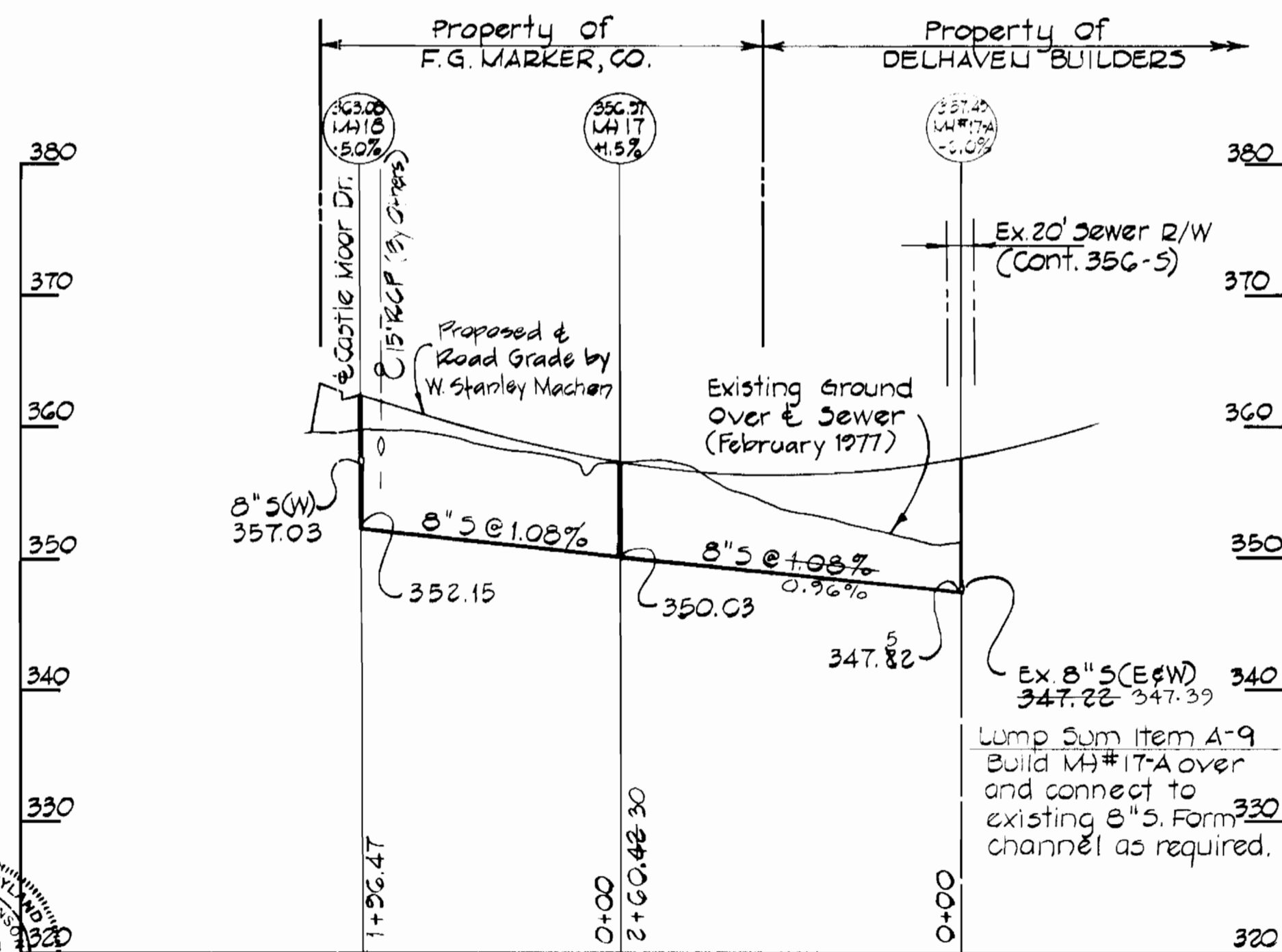
PLAN OF WATER AND SEWER MAINS

BEAVERBROOK SUBDIVISION  
SECTION 10 - AREA 3  
ELECTION DISTRICT CLARKVILLE NO. 5

DRAWING SCALE  
NO. 1  
OF 2  
As Shown  
DESIGNED: TAF  
DRAFTED: TAF  
CHECKED: TAF



FUTURE BEAVERBROOK ROAD



CONTRACT NO. 2734-D-W&S  
 BEAVERBROOK SUBDIVISION  
 SECTION 10- AREA 3  
 WATER & SEWER MAIN EXTENSION

PURDUM & JESCHKE  
 ENGINEERS  
 1023 N. CALVERT ST.  
 BALTIMORE, MARYLAND

DEPARTMENT OF PUBLIC WORKS  
 HOWARD COUNTY, MARYLAND  
 6-2-77 W.D. J. J. 6-2-77  
 DIRECTOR OF PUBLIC WORKS DATE CHIEF BUREAU OF ENGINEERING DATE

CONTRACT NO. 2734-D-W&S

PROFILE OF  
 WATER AND SEWER MAINS

BEAVERBROOK SUBDIVISION  
 SECTION 10- AREA 3  
 ELECTION DISTRICT CLARKSVILLE NO. 5

DRAWING NO. 2 OF 2  
 SCALE As Shown  
 DESIGNED: TAM  
 DRAFTED: TAM  
 CHECKED: TAF