

LEGEND - SANITARY SEWER
 1. --- EX. S.H.C.
 2. --- PROPOSED SEWER HOUSE CONNECTION EXTENSION
 LOTS 5, 6, 8, 9, 10, 11
 Note: Extend Lot 7
 Lot 11 doesn't need Extension

PLAN SCALE 1"=50'

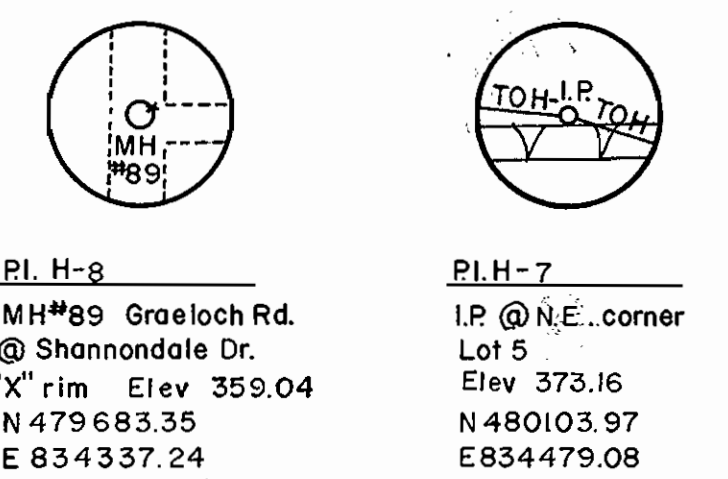
HAMMOND VILLAGE SECTION 7

NOTES

- Approximate locations of existing mains are shown. The contractor shall take all necessary precautions to protect existing mains and services and maintain uninterrupted supply. Any damage incurred shall be repaired immediately.
- All horizontal controls are based on Maryland State Coordinates.
- All vertical controls are based on U.S.G.S. Datum.
- All pipe elevations shown are invert elevations.
- Clear all utilities by a minimum of 6". Clear all poles 2'-0" minimum or tunnel as required.
- For all standard details see standards bound in specifications.
- Contractor shall locate existing utilities in advance of construction operations in the vicinity of proposed utilities.
- Contractor shall notify the following utilities or agencies at least five(5) days before starting work shown on these plans:
 Baltimore Gas and Electric Company - Underground Electric Distribution Engineering - 234-5691
 Baltimore Gas and Electric Company - Underground Gas Distribution Engineering - 559-0100
 Chesapeake and Potomac Telephone Co. - 725-9976
 American Telephone and Telegraph - Cable Location Division - 301-393-3553
- Trees are to be protected from damage to maximum extent. Trees located within the construction strip are not to be removed or damaged by the contractor.
- Contractor shall remove trees, stumps and roots along line of excavation as directed by the Engineer. Payment for such removal shall be included in the unit price bid for excavation and backfill for water and sewer mains.
- Place regulation "Men Working" and warning signs as required to comply with Maryland State Highway Administration Manual of Traffic Control for Highway Construction and Maintenance Operations.
- All water mains to be C.I.P., D.I.P., or A.C.P. unless otherwise noted.
- Top of all water mains to have a minimum of 3'-1/2" cover unless otherwise noted.
- All valves to be strapped to tees in accordance with standard details.
- Block all fittings with concrete, see standards bound in specifications.
- Bury line elevations on fire hydrants shall be set to the elevations shown on the drawings. All fire hydrants shall be strapped and buttressed with concrete in accordance with standard details. Soil around the fire hydrant to be compacted in accordance with Section 5-15 of the Standard Specifications.
- All water house connections shall be 3/4" diameter unless otherwise noted.
- Water services shall be for inside meter setting.

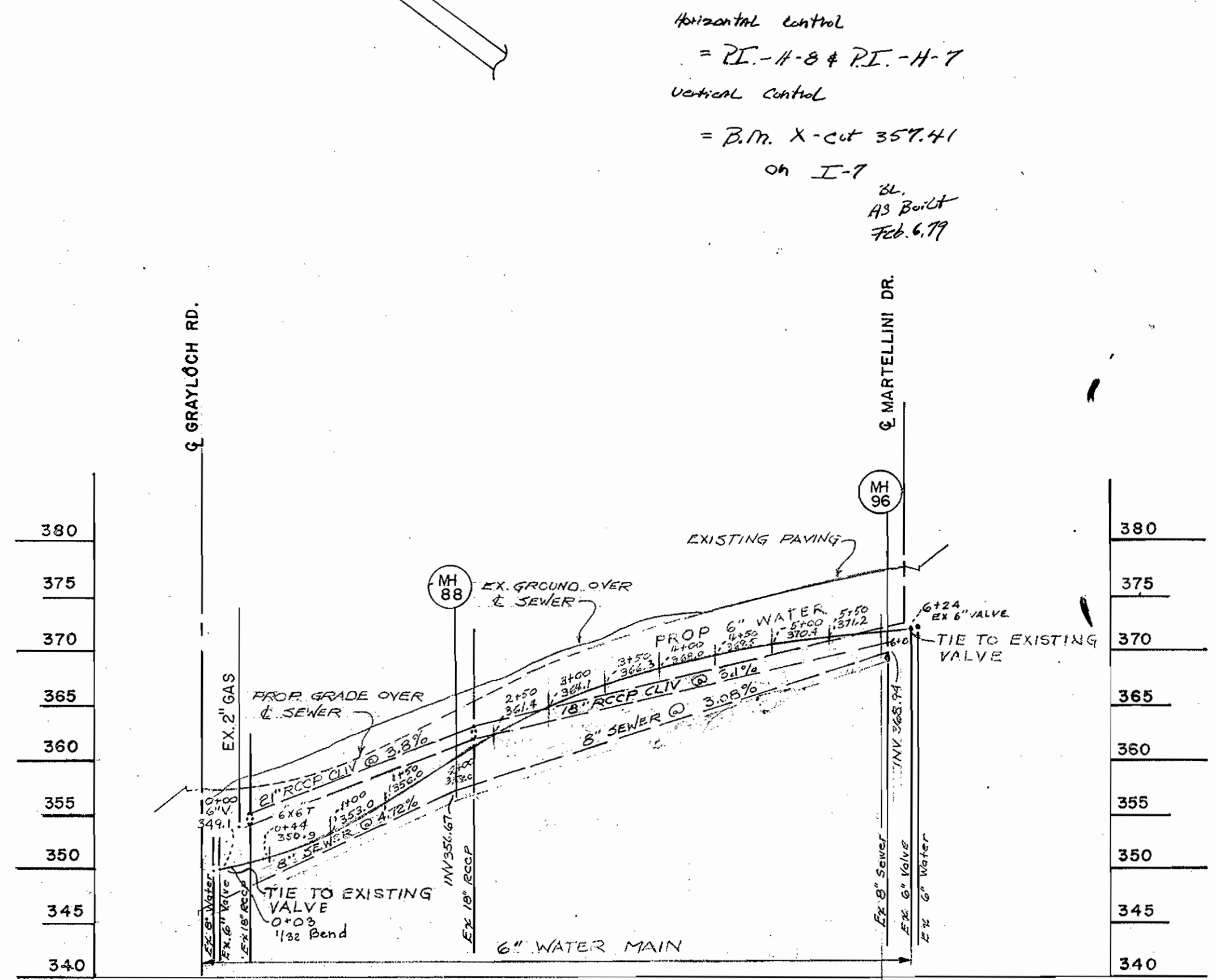
MATERIALS LIST	
ITEM	QUANTITY
6" WATER MAIN - GRP DIP	624 L.F. 685 L.F.
6" FIRE HYDRANT	1 EA.
6" VALVE	1 EA.

6" Water - DIP - Class 53 - Griffin



PI. H-8
 MH#89 Grae Loch Rd.
 @ Shannondale Dr.
 "X" rim Elev 359.04
 N 479 683.35
 E 834337.24

PI. H-7
 I.P. @ N.E. corner
 Lot 5
 Elev 373.16
 N 480103.97
 E 834479.08



SCALE HOR 1"=100'
 VERT 1"=10'

WS 728-W/1

TYDINGS-OHEIM ASSOCIATES INC. 8370 COURT AVENUE ELLICOTT CITY, MARYLAND 21043	DEPARTMENT OF PUBLIC WORKS HOWARD COUNTY, MARYLAND <i>P. J. Regan</i> 5-20-77 <i>W. J. Herbert</i> 5-19-77 DIRECTOR OF PUBLIC WORKS DATE CHIEF-BUREAU OF ENGINEERING DATE	CONTRACT NO. 728-D-W	PLAN OF WATER MAIN	ELECTION DISTRICT NO. 6 HAMMOND VILLAGE	DRAWING NO. OF 1 OF 1	SCALE HOR. 1"=100' VER. 1"=10'
---	---	-----------------------------	---------------------------	--	------------------------------------	---



As Built 8-19-77