

QUANTITIES		
Item	Estimated	'As Built'
30" Sewer	5 L.F.	2.5 L.F.
27" Sewer	4790 L.F.	4,735 L.F.
8" Sewer	25 L.F.	12.5 L.F.
Manholes	185 V.F.	179.2 V.F.

CAPITAL PROJECT S-4-6069

CONTRACT NO. 2723-S

MIDDLE PATUXENT INTERCEPTOR MH. 208 TO KINDLER ROAD HOWARD COUNTY, MARYLAND

DEPARTMENT OF PUBLIC WORKS

GENERAL NOTES

- Approximate location of existing utilities is shown. The Contractor shall take all necessary precautions to protect existing utilities and to maintain uninterrupted service. Any damage incurred shall be repaired immediately to the satisfaction of the Engineer by the Contractor at the Contractor's expense.
- The Contractor shall locate existing utilities a minimum of two weeks in advance of construction operations in vicinity of utilities. Cost shall be included in the unit price bid for excavation.
- Contractor shall notify the following utilities or agencies at least five (5) days before starting work shown on these plans.
Miss Utility 1-800-441-8355
State of Maryland - Department of Water Resources 301-267-5551
- Clear all utilities by a minimum of 6". Clear all poles 2'-0" minimum, or tunnel as required. Cost for tunneling or bracing at poles shall be included in the unit price bid for excavation.
- All pipe elevations shown are invert elevations.
- All manholes shall be 4' - 0" Brick or 9' - 0" Precast Manholes.
- The Contractor shall provide a pipe joint in each sewer main within 2'-0" of exterior manhole walls.
- Watertight manhole frame and cover to be used where indicated on drawings Standard Detail S-12 (RDR-63A). Where watertight manhole frame and cover is used, set top of frame 1'-0" above finished grade.
- For details not shown on the Contract Drawings see Standard Details bound in the specifications.
- Trees are to be protected from damage to the maximum extent.
- Contractor shall remove trees, stumps, and roots along line of excavation as directed by the Engineer. Payment for such removal shall be included in the unit price bid for excavation and backfill for sewer mains.
- Horizontal and vertical controls are based on the Maryland State Grid Coordinate System. CONTRACT NO. 2723-S
HOWARD COUNTY CAPITAL PROJECT S-4-6069
MIDDLE PATUXENT INTERCEPTOR
MANHOLE NO. 208 TO KINDLER ROAD

REV.	DATE	REMARKS



PURDUM & JESCHKE
ENGINEERS
1023 N. CALVERT ST.
BALTIMORE, MARYLAND

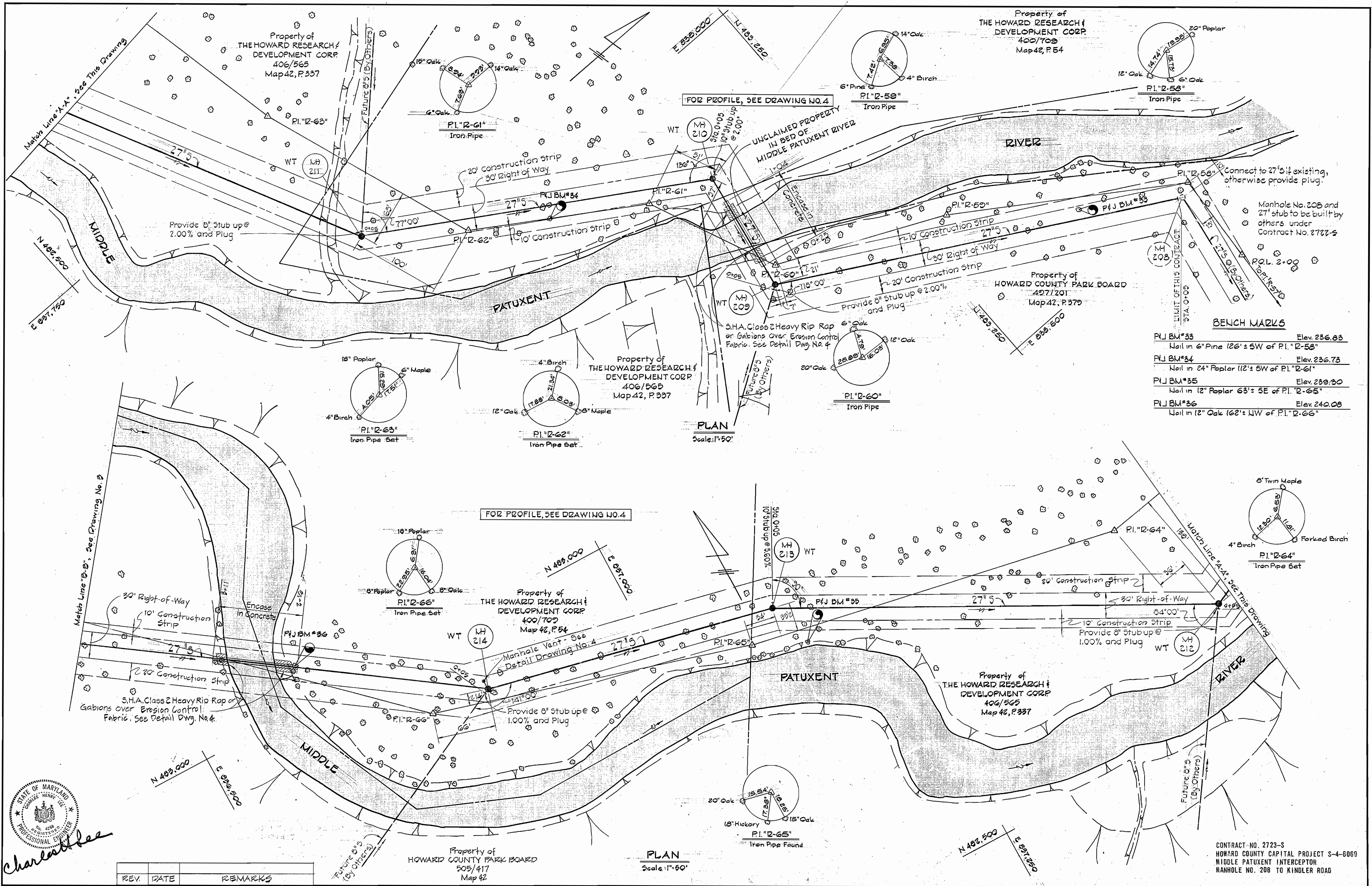
DEPARTMENT OF PUBLIC WORKS
HOWARD COUNTY, MARYLAND
6-25-77
DIRECTOR OF PUBLIC WORKS DATE

CONTRACT NO. 2723-S
CAPITAL PROJECT NO. S-4-6069
6-27-77
CHIEF-BUREAU OF ENGINEERING DATE

LOCATION MAP

MIDDLE PATUXENT INTERCEPTOR
ELECTION DISTRICT NO. 6
HOWARD COUNTY, MARYLAND

DRAWING NO. 1 OF 5
SCALE AS SHOWN
Maps: 221-40, 222-40



BENCH MARKS

PJ BM #33	Elev. 236.83
Nail in 6" Pine 126' ± SW of PI 'R-58"	
PJ BM #34	Elev. 236.73
Nail in 24" Poplar 112' ± SW of PI 'R-61"	
PJ BM #35	Elev. 239.30
Nail in 12" Poplar 63' ± SE of PI 'R-65"	
PJ BM #36	Elev. 240.08
Nail in 12" Oak 162' ± NW of PI 'R-66"	

Charles Lee

REV.	DATE	REMARKS

PURDUM & JESCHKE
 ENGINEERS
 1023 N. CALVERT ST.
 BALTIMORE, MARYLAND

DEPARTMENT OF PUBLIC WORKS
 HOWARD COUNTY, MARYLAND
 Director of Public Works: *M. Pagan* 6-25-77
 Chief Bureau of Engineering: *W. O. Herbert* 6-27-77

CONTRACT NO. A723-S
 CAPITAL PROJECT NO. S-4-6069

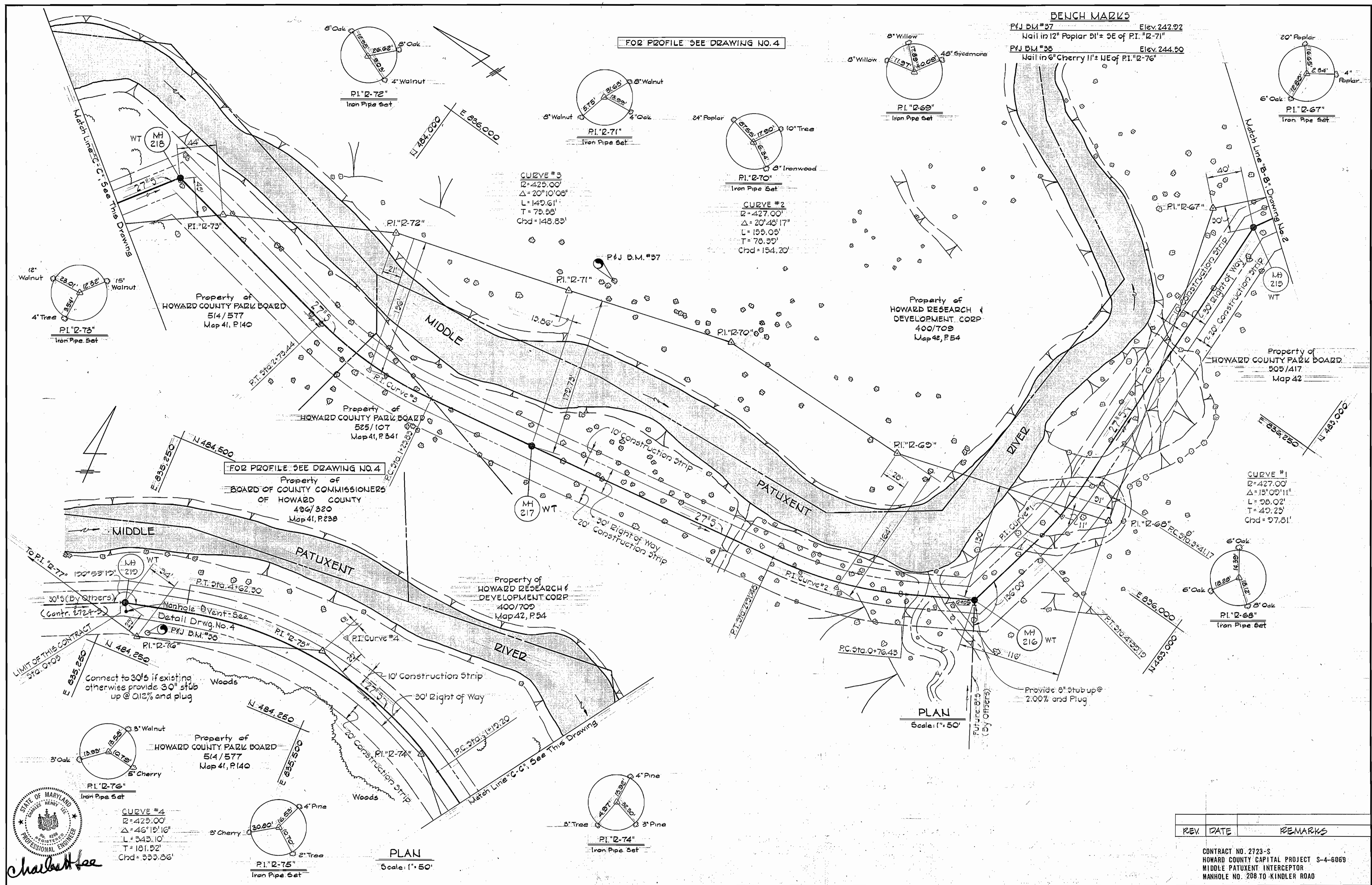
PLAN
 FOR SANITARY SEWERS

MIDDLE PATUXENT INTERCEPTOR
 ELECTION DISTRICT NO. 6
 HOWARD COUNTY, MARYLAND

DRAWING NO.	2	DESIGNED	REP
OF	5	DRAFTED	REC
		CHECKED	TAF

AS BUILT Oct. 3, 1980

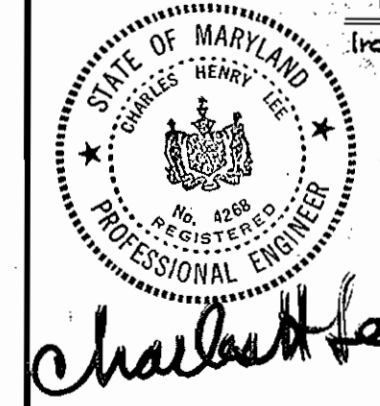
WS 723 5/2



BENCH MARKS
 P.I. B.M. #37 Elev. 242.92
 Nail in 12" Poplar 51' ± SE of P.I. "R-71"
 P.I. B.M. #38 Elev. 244.50
 Nail in 6" Cherry 11' ± NE of P.I. "R-76"

FOR PROFILE SEE DRAWING NO. 4

FOR PROFILE SEE DRAWING NO. 4



Charles H. Lee

REV.	DATE	REMARKS

CONTRACT NO. 2723-S
 HOWARD COUNTY CAPITAL PROJECT S-4-6069
 MIDDLE PATUXENT INTERCEPTOR
 MANHOLE NO. 208 TO KINDLER ROAD

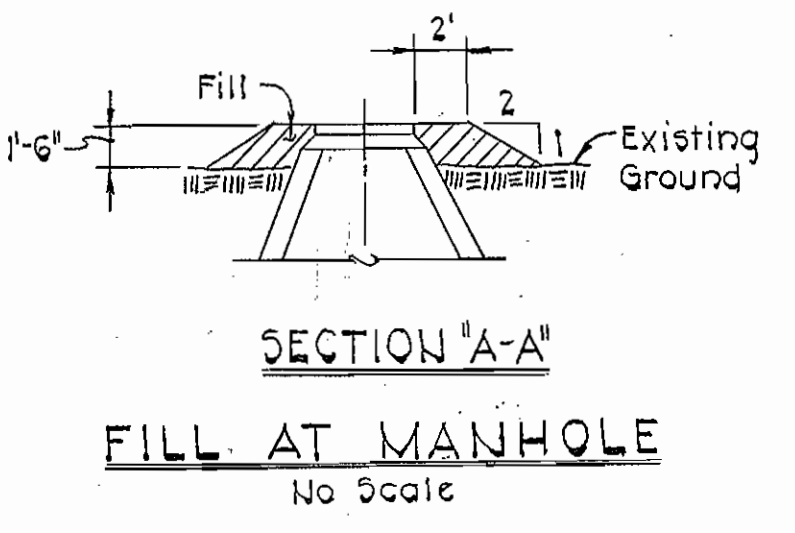
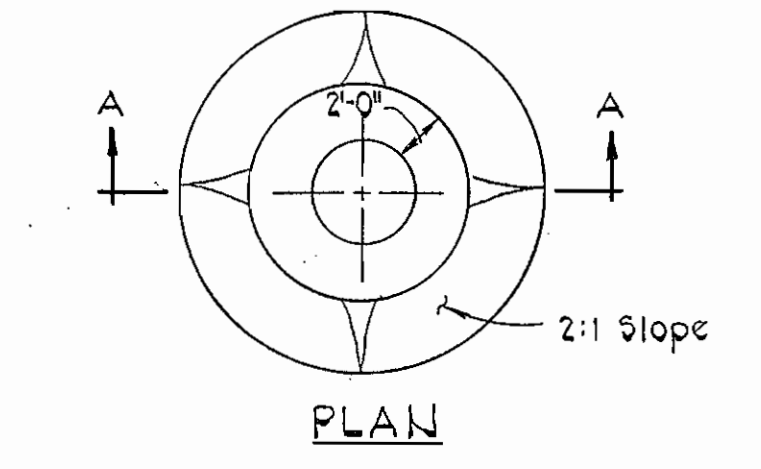
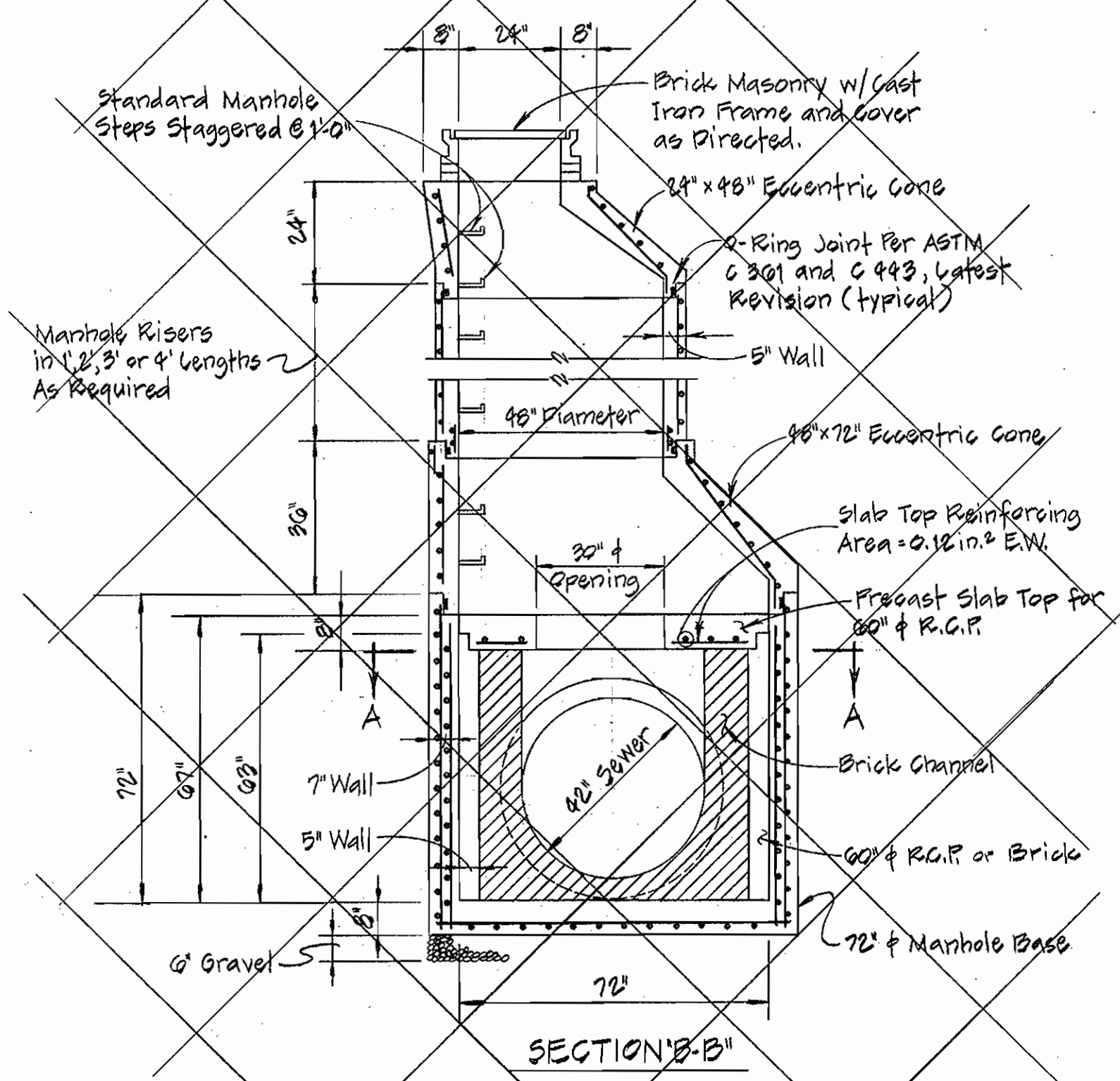
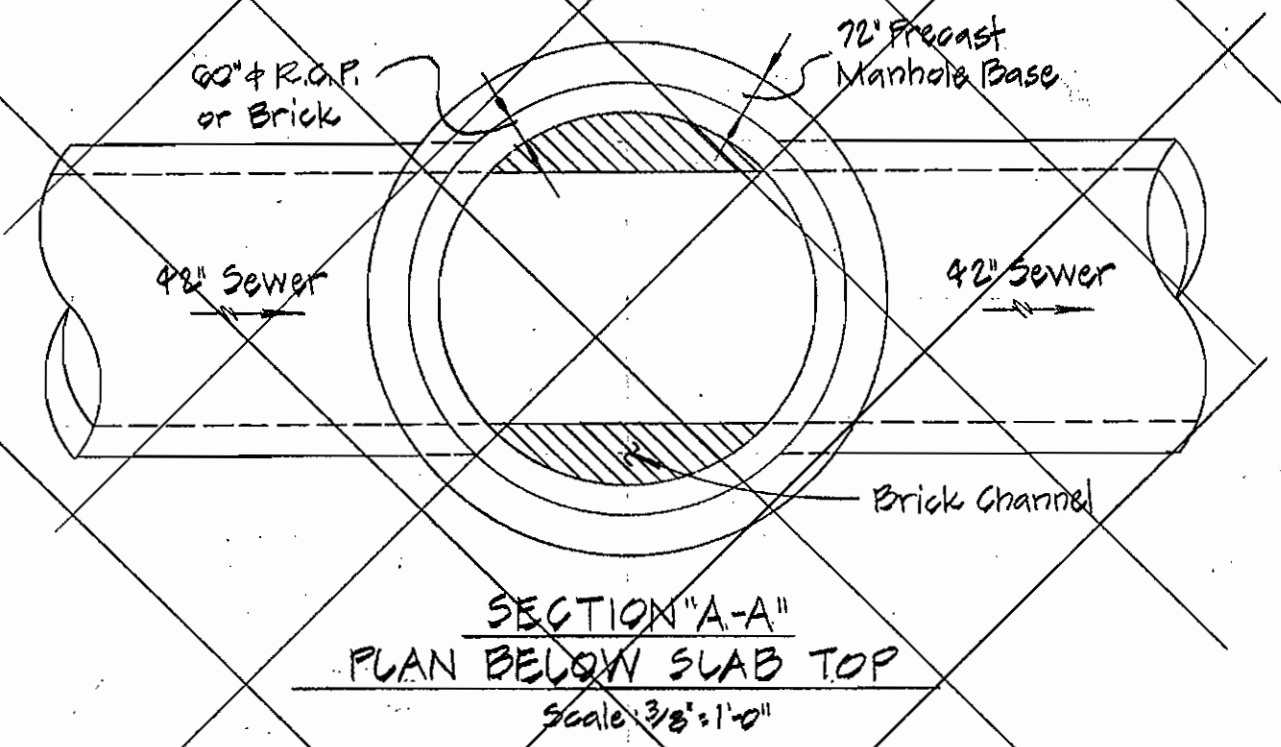
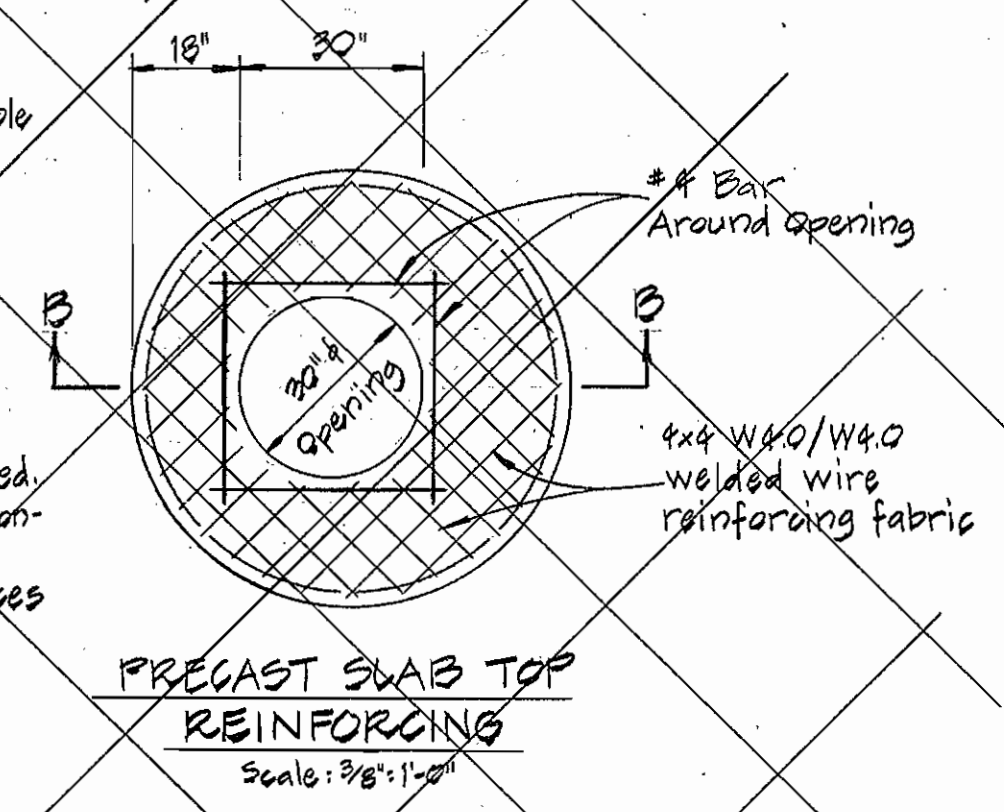
PURDUM & JESCHKE ENGINEERS 1023 N. CALVERT ST. BALTIMORE, MARYLAND	DEPARTMENT OF PUBLIC WORKS HOWARD COUNTY, MARYLAND 6-28-77 DIRECTOR OF PUBLIC WORKS DATE	CONTRACT NO. 2723-S CAPITAL PROJECT NO. S-4-6069	PLAN FOR SANITARY SEWERS	MIDDLE PATUXENT INTERCEPTOR ELECTION DISTRICT NO. 6 HOWARD COUNTY, MARYLAND	DRAWING NO. OF 3 OF 5	SCALE AS SHOWN	DESIGNED REP DRAFTED ARZ CHECKED TAF
					9/27/79		

WS 723 S/3

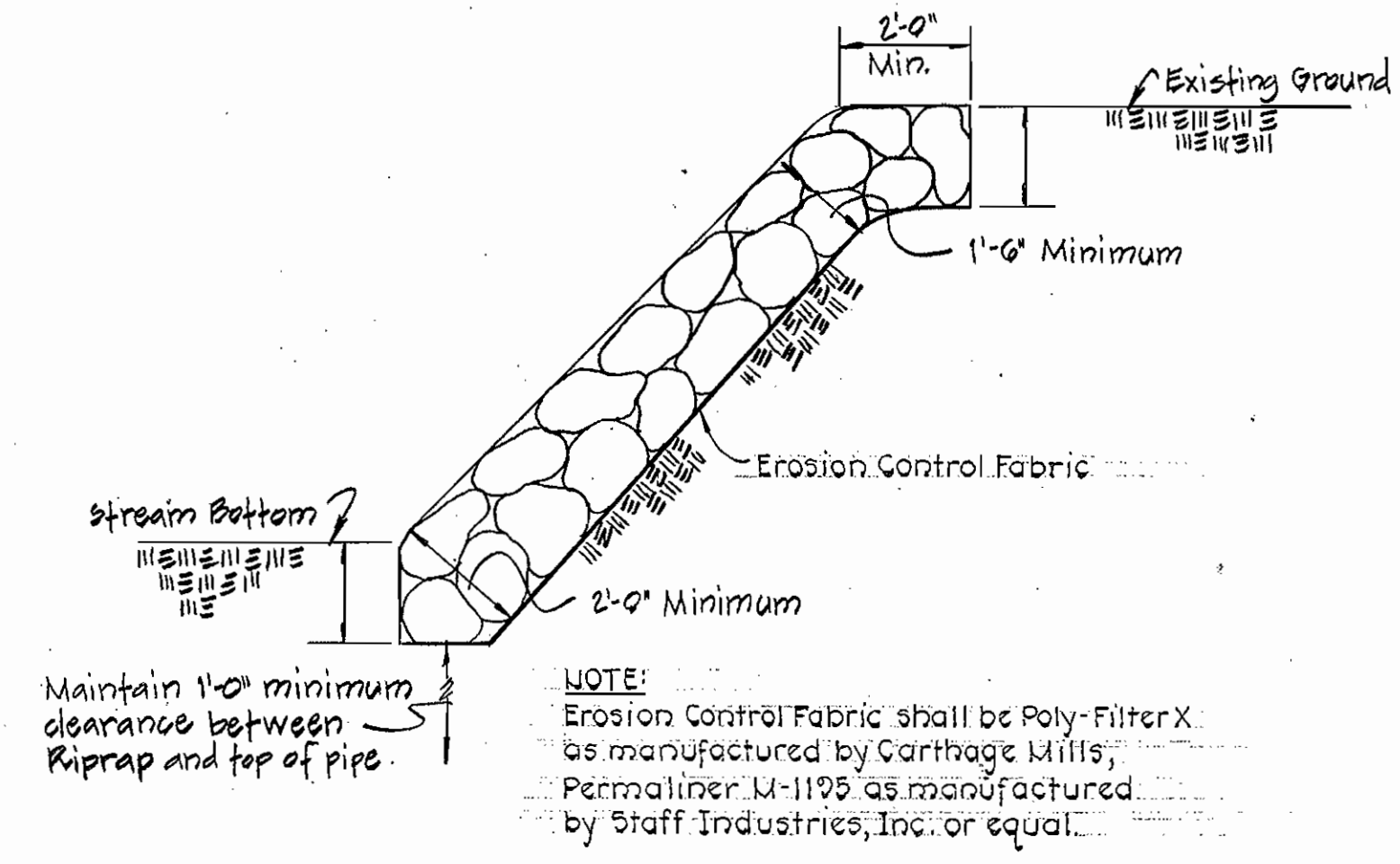
As Built Oct. 3, 1980

NOTES:

1. Manhole Design shall conform to ASTM C478, "Precast Reinforced Concrete Manhole Sections", Latest Revision.
2. Reinforcing shall conform to ASTM A185 and shall be provided in Bells and Spigots. Area 48" Diameter = 0.12 in.² Vert. Ft. Area 72" Diameter = 0.17 in.² Vert. Ft.
3. All Concrete shall be 4000 p.s.i.
4. 60# R.C.P. shall conform to ASTM C-76, Class I
5. Pipe Openings shall be provided as required.
6. All Pipe Openings shall be sealed with Non-Shrink Grout Joint Filler.
7. Lift Pin Holes shall be provided in all pieces for Handling.

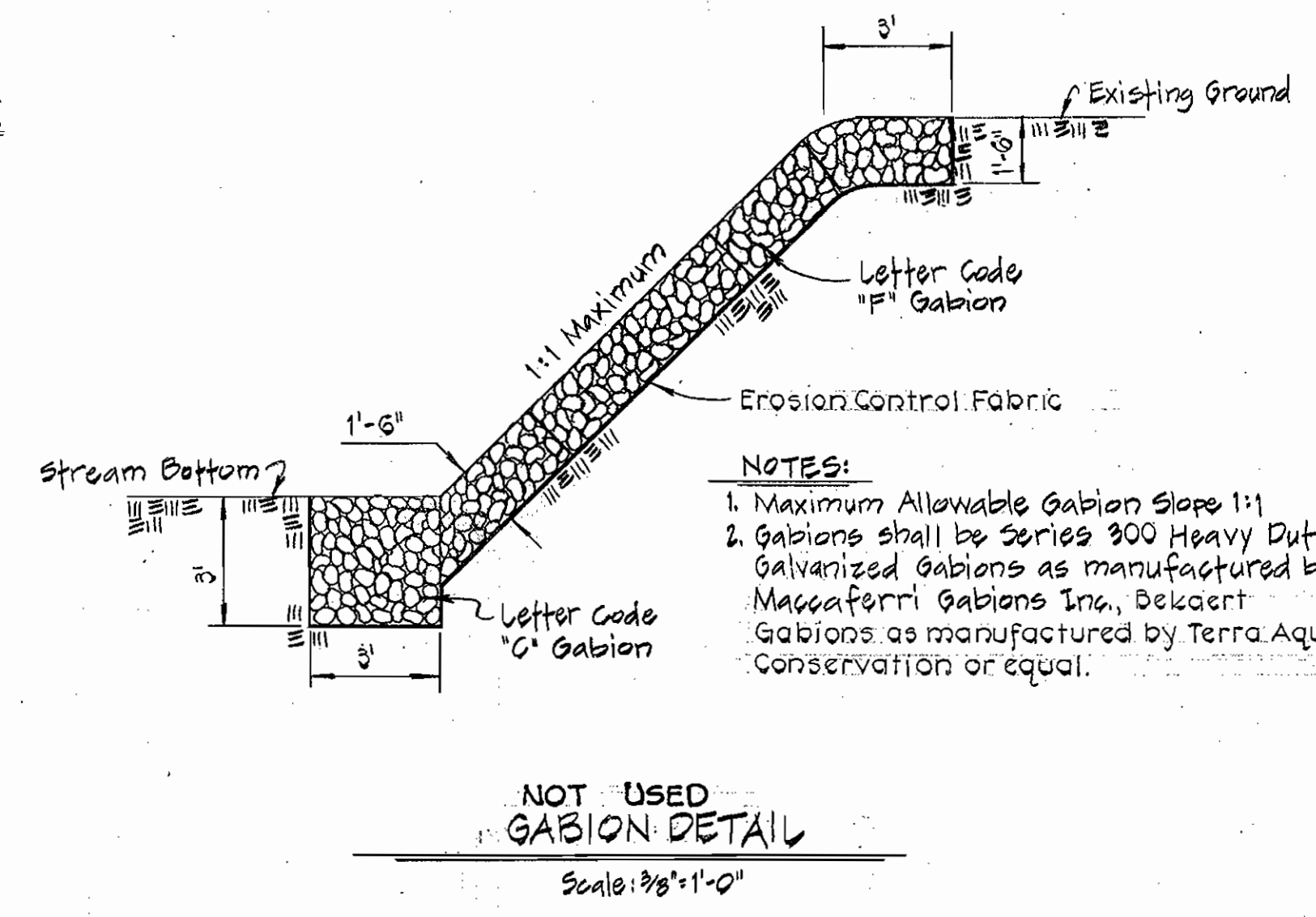


Riprap to consist of dense rocks of random shapes and sizes, resistant to the action of air and water, and suitable for bank protection.

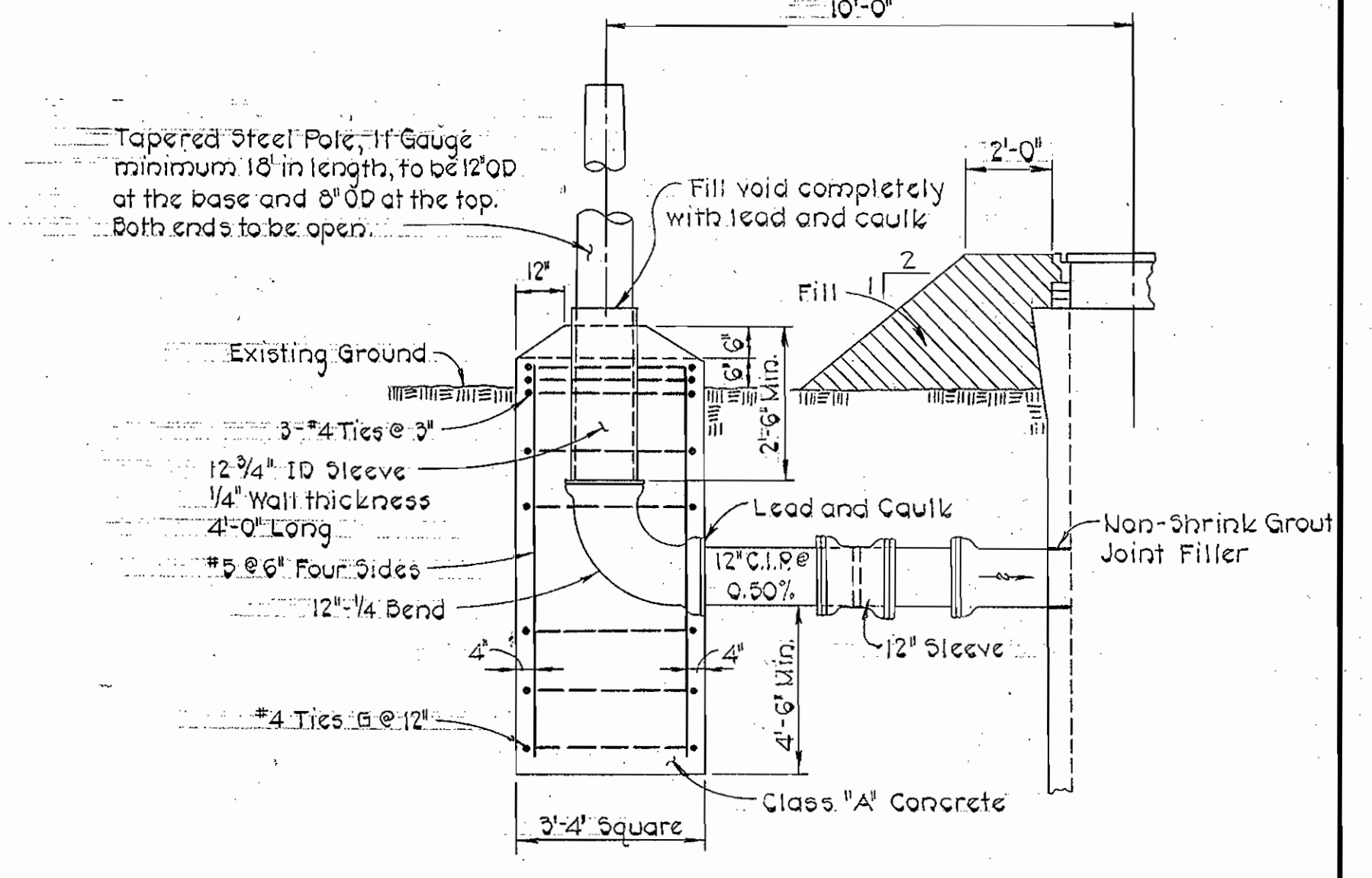


GABION STRUCTURE DATA

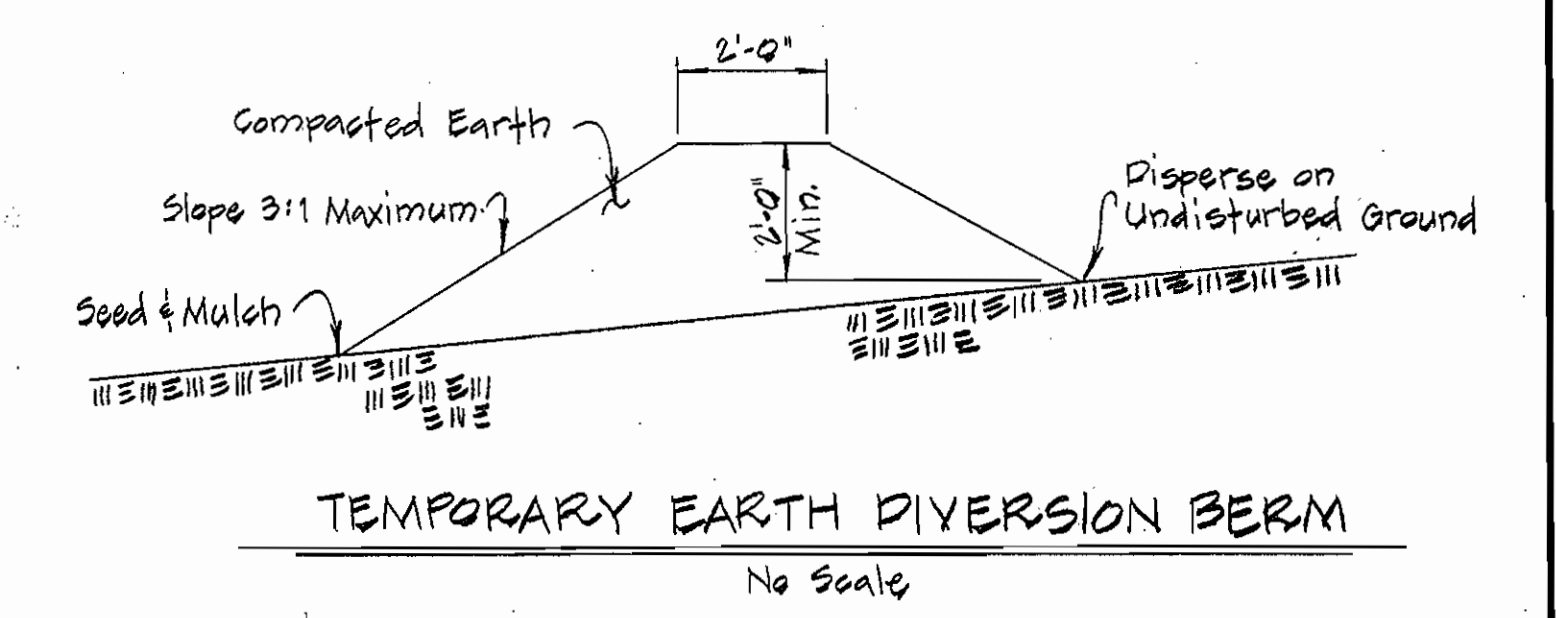
Letter Code of Sizes	Approximate Length Width and Depth
G	12' x 3' x 3'
F	12' x 3' x 1'-6"



Steel Pole shall be sandblasted and painted with the following coatings in accordance with the manufacturer's recommendations:
(a) Interior - 2 Coats 413 Themec-Tar
Exterior - 2 Coats 66 Hi-Build as manufactured by Themec Co. Inc.
(b) Interior - Bitumastic 300-M
Exterior - Glomortex 501 Enamel as manufactured by Koppers Co. Inc. or equal.



Diversion berms are required every 250 feet on continuous slopes of 4% or greater. The berms shall conform to the typical section shown hereon and shall be constructed across the construction areas immediately after the backfilling of the pipe trench and prior to placing stabilization in order to prevent erosion of the back-filled areas.

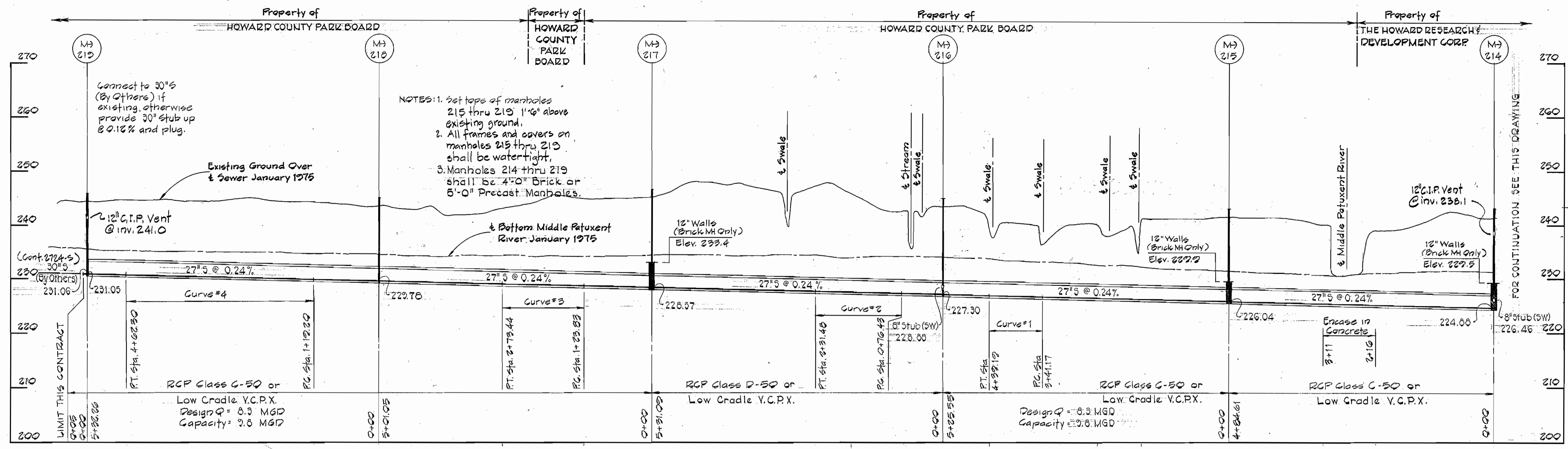


WS 723 S/4

PURDUM & JESCHKE ENGINEERS 1023 N. CALVERT ST. BALTIMORE, MARYLAND	DEPARTMENT OF PUBLIC WORKS HOWARD COUNTY, MARYLAND Director of Public Works DATE: 6-28-77 Chief-Bureau of Engineering DATE: 6-27-77	CONTRACT NO. X723-S CAPITAL PROJECT NO. S-4-6069	DETAILS	MIDDLE PATUXENT INTERCEPTOR ELECTION DISTRICT NO. 6 HOWARD COUNTY, MARYLAND	DRAWING NO. 4 OF 5	SCALE AS SHOWN	DESIGNED: REP DRAFTED: REC CHECKED: TAF
					REV. DATE REMARKS	CONTRACT NO. 2723-S CAPITAL PROJECT S-4-6069 MIDDLE PATUXENT INTERCEPTOR MANHOLE NO. 208 TO KINDLER ROAD	DATE: 9/27/79

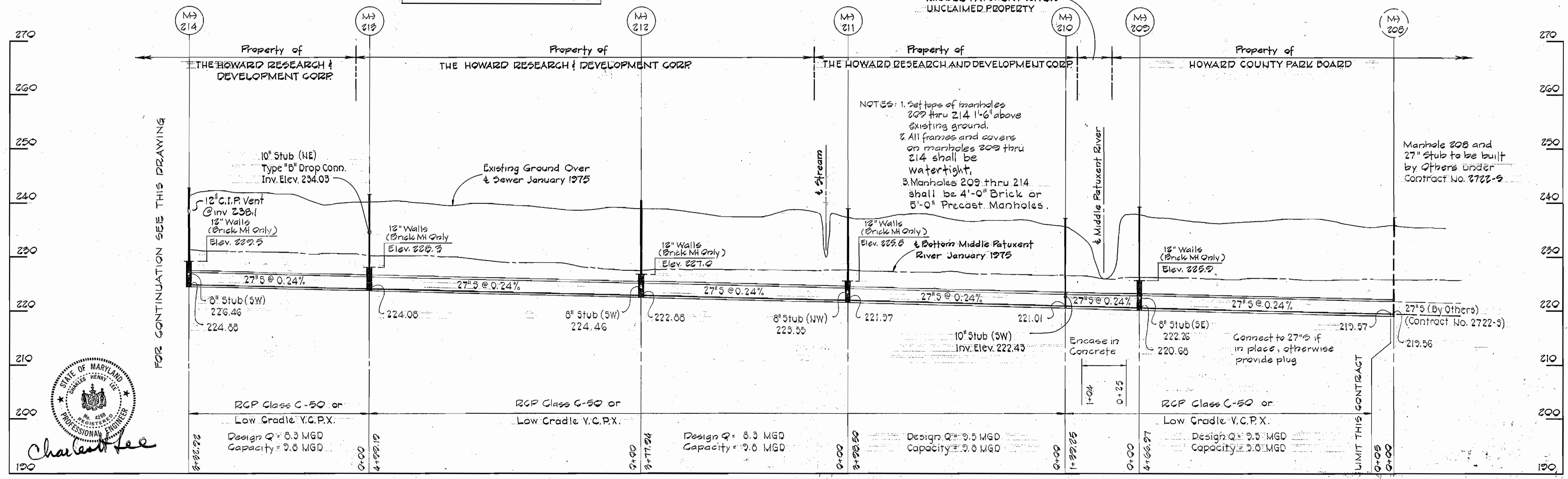
As Built Oct. 3, 1980

FOR PLAN SEE DRAWINGS NO. 213



PROFILE
 Horiz.: 1"=100'
 Vert.: 1"=10'

FOR PLAN SEE DRAWING NO. 2



PROFILE
 Horiz.: 1"=100'
 Vert.: 1"=10'



REV.	DATE	REMARKS

PURDUM & JESCHKE
 ENGINEERS
 1023 N. CALVERT ST.
 BALTIMORE, MARYLAND

DEPARTMENT OF PUBLIC WORKS
 HOWARD COUNTY, MARYLAND
 DATE: 6-28-77
 CHIEF-BUREAU OF ENGINEERING

CONTRACT NO. 723-S
 CAPITAL PROJECT NO. S-4-6069

PROFILES

MIDDLE PATUXENT INTERCEPTOR
 ELECTION DISTRICT NO. 6
 HOWARD COUNTY, MARYLAND

DRAWING NO. 5 OF 5
 SCALE AS SHOWN

DESIGNED: REP
 DRAFTED: REC
 CHECKED: TAF

CONTRACT NO. 2723-S
 HOWARD COUNTY CAPITAL PROJECT S-4-6069
 MIDDLE PATUXENT INTERCEPTOR
 MANHOLE NO. 208 TO KINDLER ROAD

As Built Oct. 3, 1980

WS 723 S/5