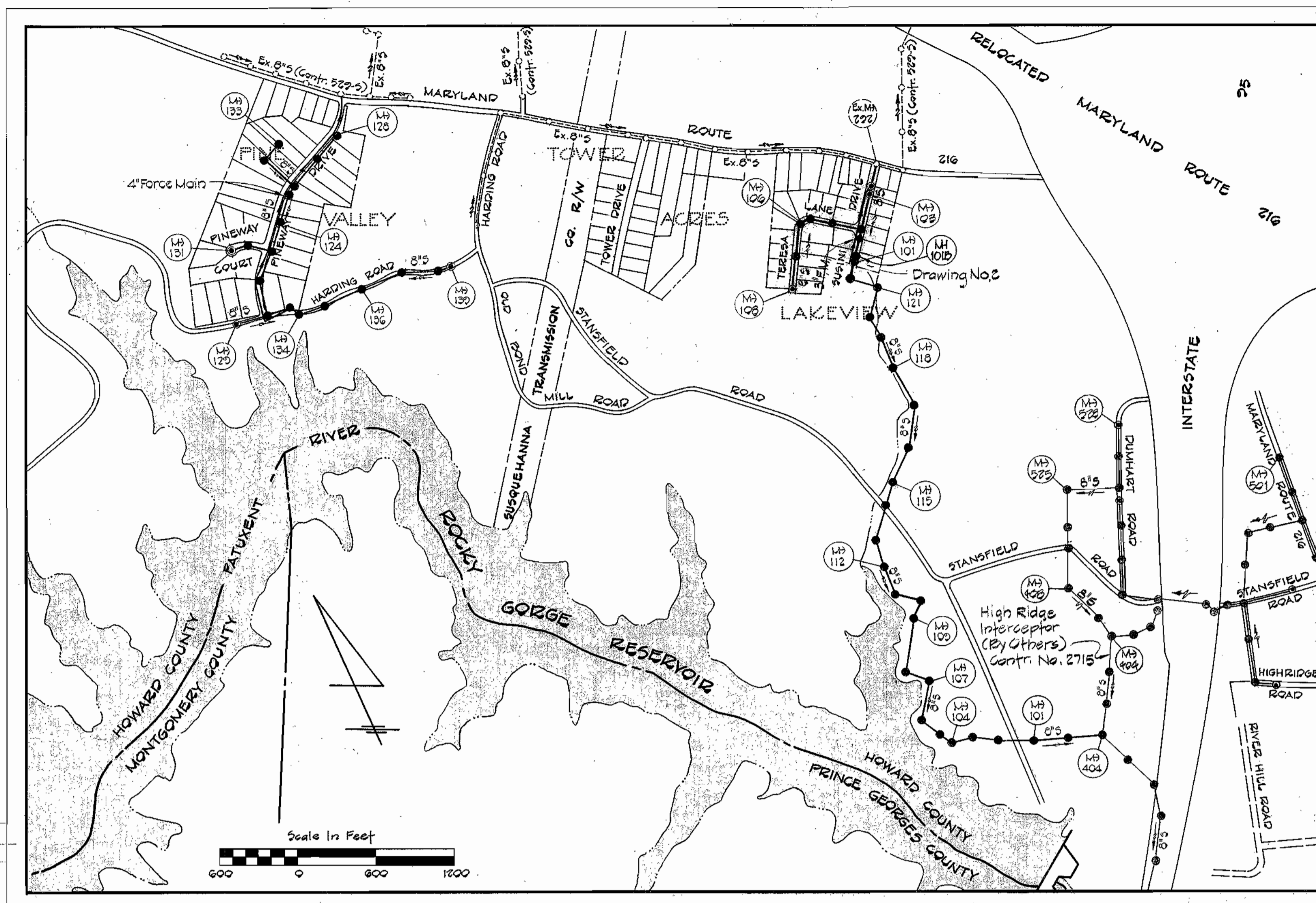
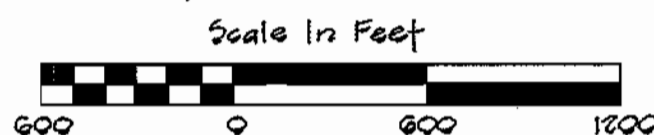


GENERAL NOTES

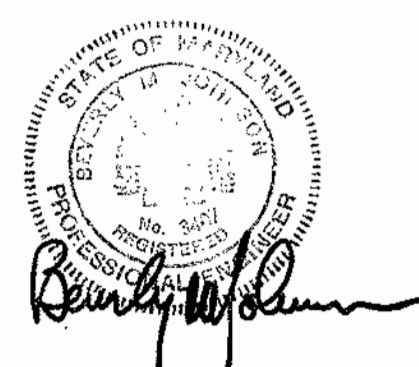
1. Approximate locations of existing utilities are shown. The Contractor shall take all necessary precautions to protect existing utilities and to maintain uninterrupted service. Any damage incurred shall be repaired immediately to the satisfaction of the Engineer by the Contractor at the Contractor's expense.
2. The Contractor shall locate existing utilities a minimum of two weeks in advance of construction operations in vicinity of utilities. Cost shall be included in the unit prices bid for excavation and backfill for sewer mains.
3. Contractor shall notify the following utilities or agencies at least five (5) days before starting work shown on these plans:
 Baltimore Gas & Electric Company - Underground Gas Distribution Engineering - 559-0100
 Chesapeake and Potomac Telephone Company - 725-9976
 Miss Utility - 1-800-441-8355
4. Clear all utilities by a minimum of 6". Clear all poles 2'-0" minimum or tunnel as required. Cost for tunneling or bracing at poles shall be included in the unit prices bid for excavation and backfill for sewer mains.
5. All pipe elevations shown are invert elevations.
6. The Contractor shall provide a pipe joint in each sewer main within 2'-0" of the exterior manhole walls.
7. All manholes shall be 4'-0" inside diameter, unless otherwise noted.
8. Watertight manhole frame and cover to be used where indicated on drawings, Standard Detail S-12 (RCR-63A). Where watertight manhole frame and cover is used, set top of frame 1'-6" above finished grade.
9. For details not shown on the Contract Drawings see Standard Details bound in the specifications.
10. Trees are to be protected from damage to the maximum extent. Trees located within the construction strips are not to be removed by the Contractor.
11. Contractor shall remove trees, stumps and roots along line of excavation as directed by the Engineer. Payment for such removal shall be included in the unit prices bid for excavation and backfill for sewer mains.
12. Place regulation "Men Working" and warning signs as required to comply with Maryland State Highway Administration Manual of Traffic Control for Highway Construction & Maintenance Operations.
13. All sewer mains shall be C.S.P.X., V.C.P.X., or A.C.P. Class 2400 unless otherwise noted.
14. Force main shall be cast iron pipe ASA A21.6 or A21.8 Class 22 with ASA A21.10 Class 250 flanged fittings and shall have a minimum of four feet cover. Cast iron pipe and fittings shall be bituminous coated and cement lined.
15. Buttress or anchor all force main fittings with concrete. For details see Standard Details bound in the specifications.
16. Horizontal and vertical controls are based on the Maryland State Grid Coordinate System.



QUANTITIES				
ITEM	UNIT	ESTIMATED	"AS BUILT"	MATERIAL
30" S	L.F.	220	206	RCCP CL III
8" S	L.F.	1400	1536	ACP (J.M.)
6" S	L.F.	655	676	ACP (J.M.)
3" F.M.	L.F.	600	600	DUCTILE IRON
Manholes	V.F.	125	102	



CAPITAL PROJECT S-4-6049
CONTRACT NO. 2717-S
LAKEVIEW SANITARY SEWERS
HOWARD COUNTY, MARYLAND
DEPARTMENT OF PUBLIC WORKS



CONTRACT NO. 2717-S
 LAKEVIEW SANITARY SEWERS
 SUSINI DRIVE AND TERESA LANE
 CAPITAL PROJECT S-4-6049

PURDUM & JESCHKE
 ENGINEERS
 1023 N. CALVERT ST.
 BALTIMORE, MARYLAND

DEPARTMENT OF PUBLIC WORKS
 HOWARD COUNTY, MARYLAND
J.A. [Signature] 2-17-77 DATE *W.O. [Signature]* 2-16-77 DATE
 DIRECTOR OF PUBLIC WORKS CHIEF BUREAU OF ENGINEERING

CONTRACT NO. 2717-S
 CAPITAL PROJECT NO. S-4-6049

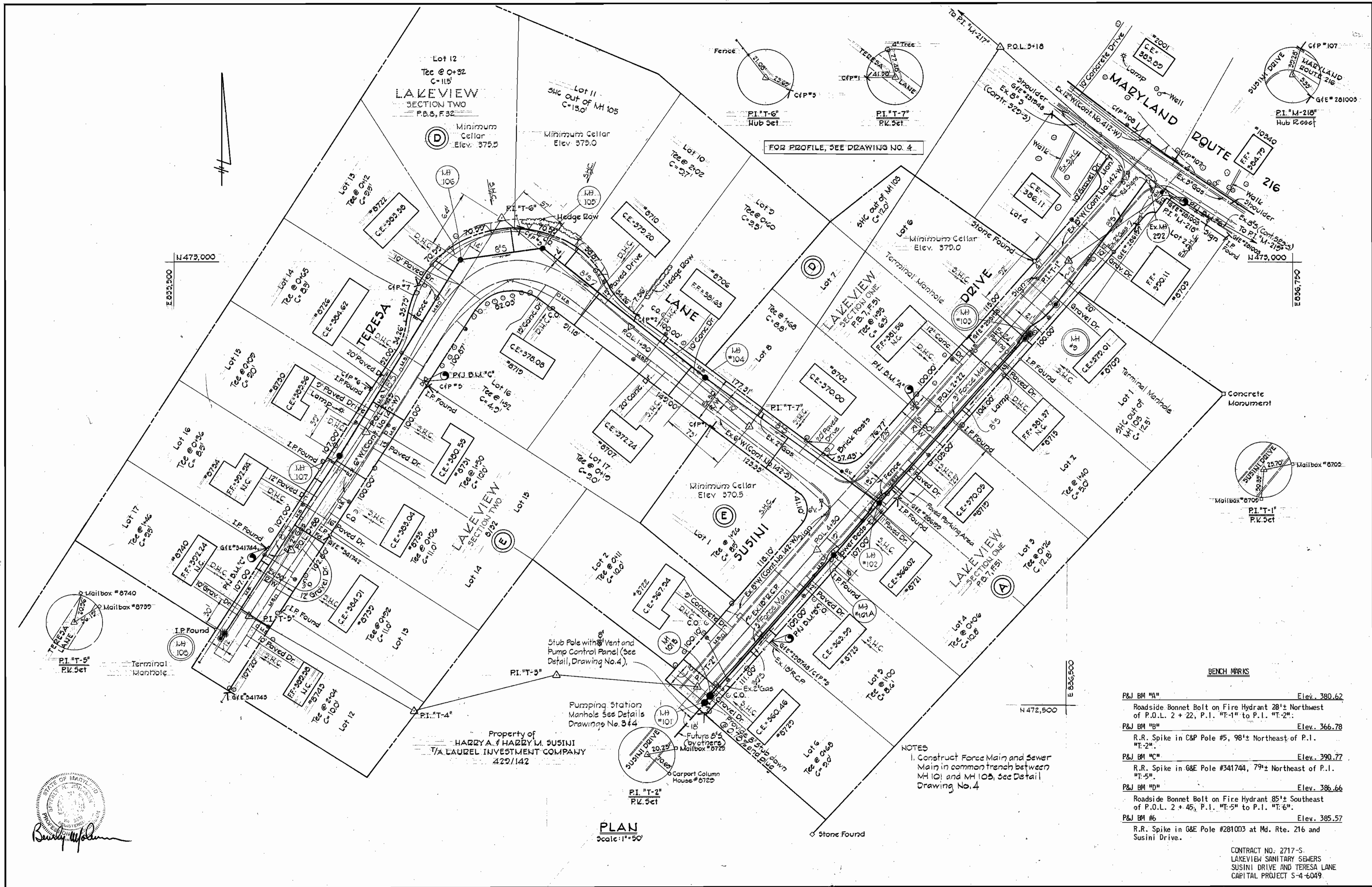
LOCATION MAP
 FOR SANITARY SEWERS

LAKEVIEW SANITARY SEWERS
 ELECTION DISTRICT NO. 6
 HOWARD COUNTY, MARYLAND

DRAWING NO.	SCALE	MAP NO.
1	1"=600'	219-40
OF 4		

11-5-77-5/1

WS 717-5/2



PURDUM & JESCHKE
 ENGINEERS
 1023 N. CALVERT ST.
 BALTIMORE, MARYLAND

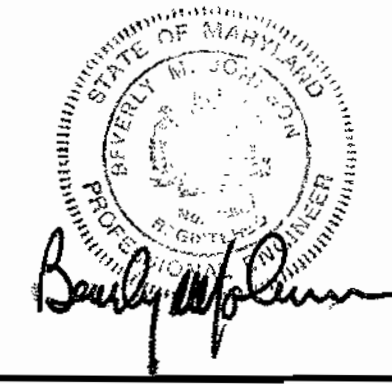
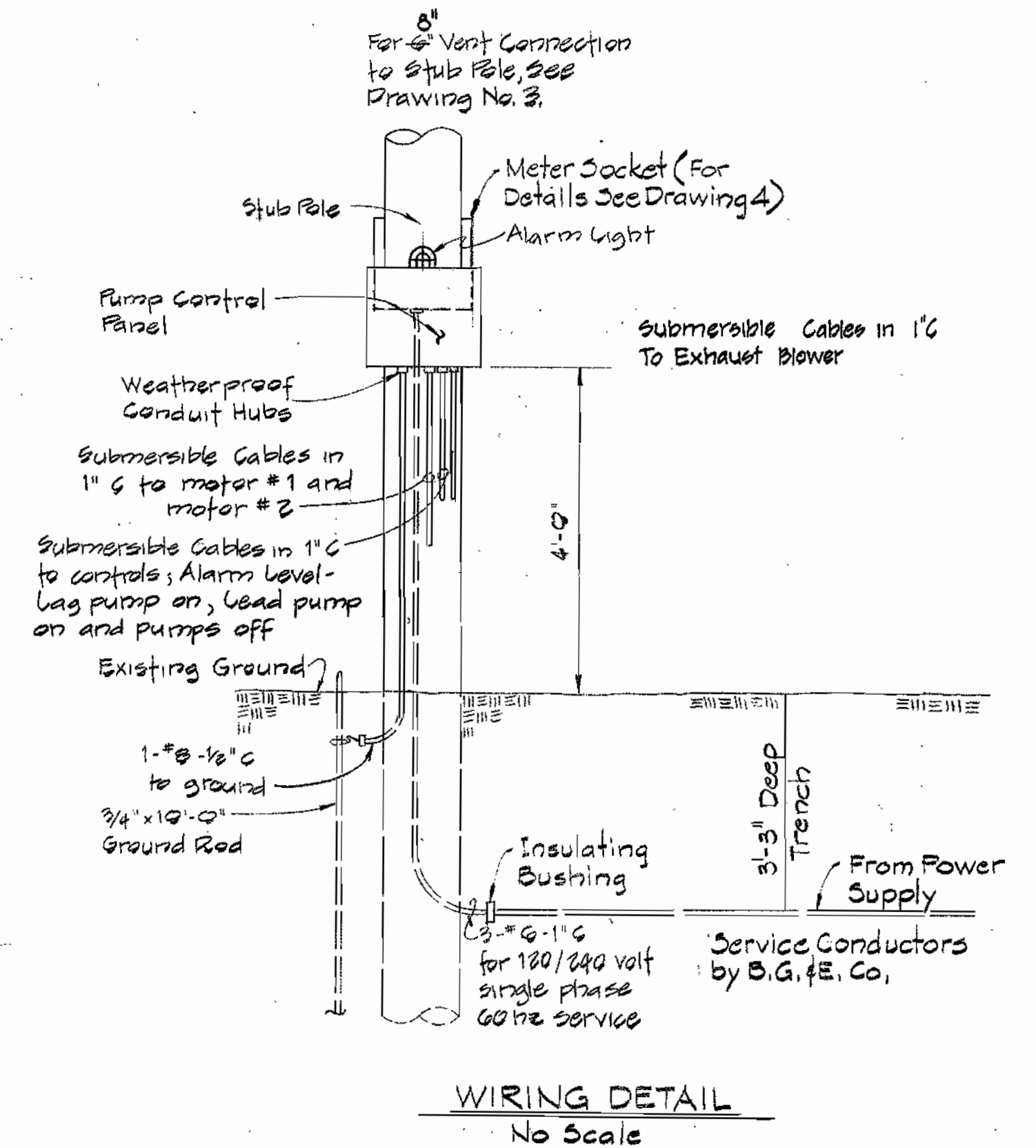
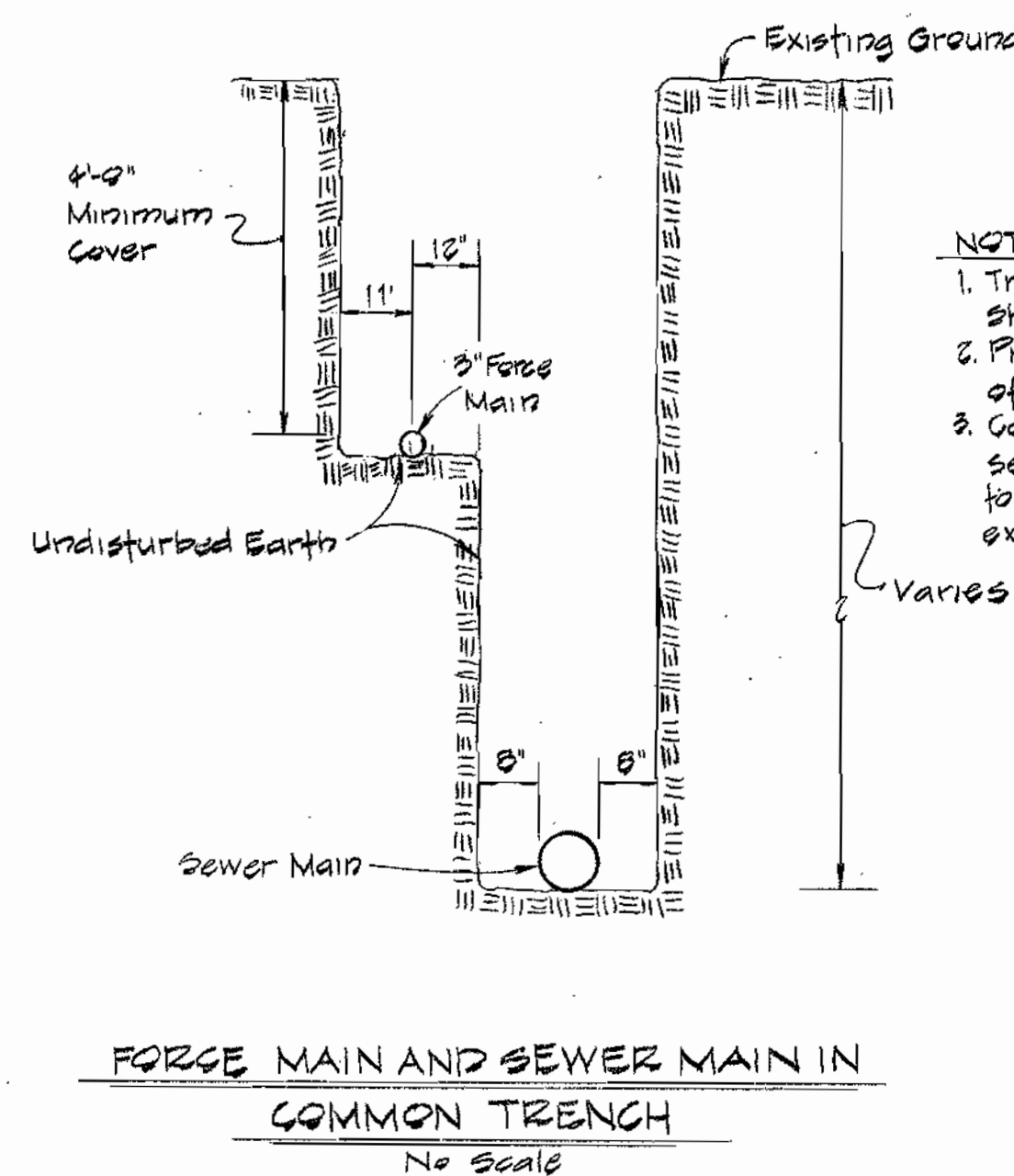
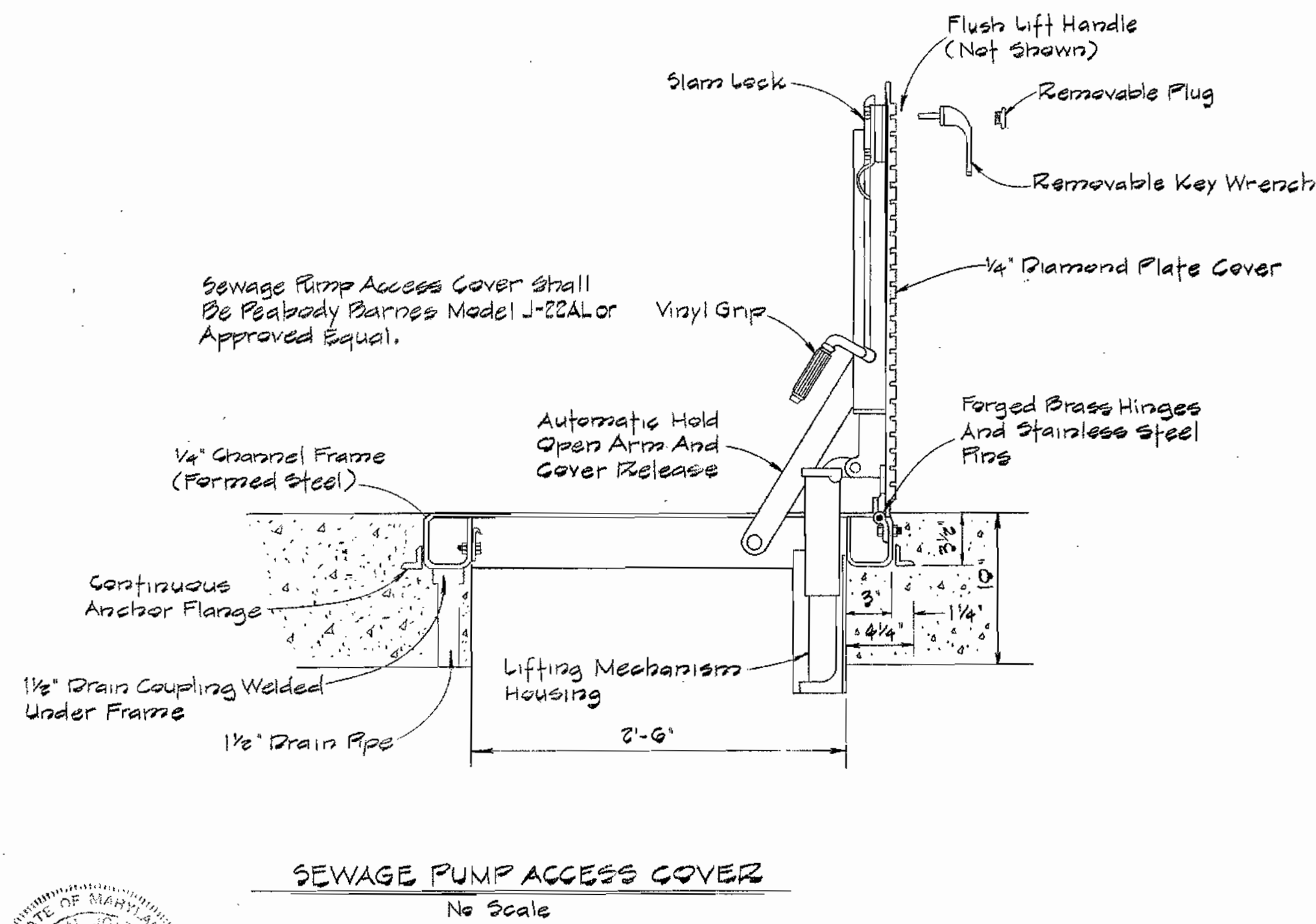
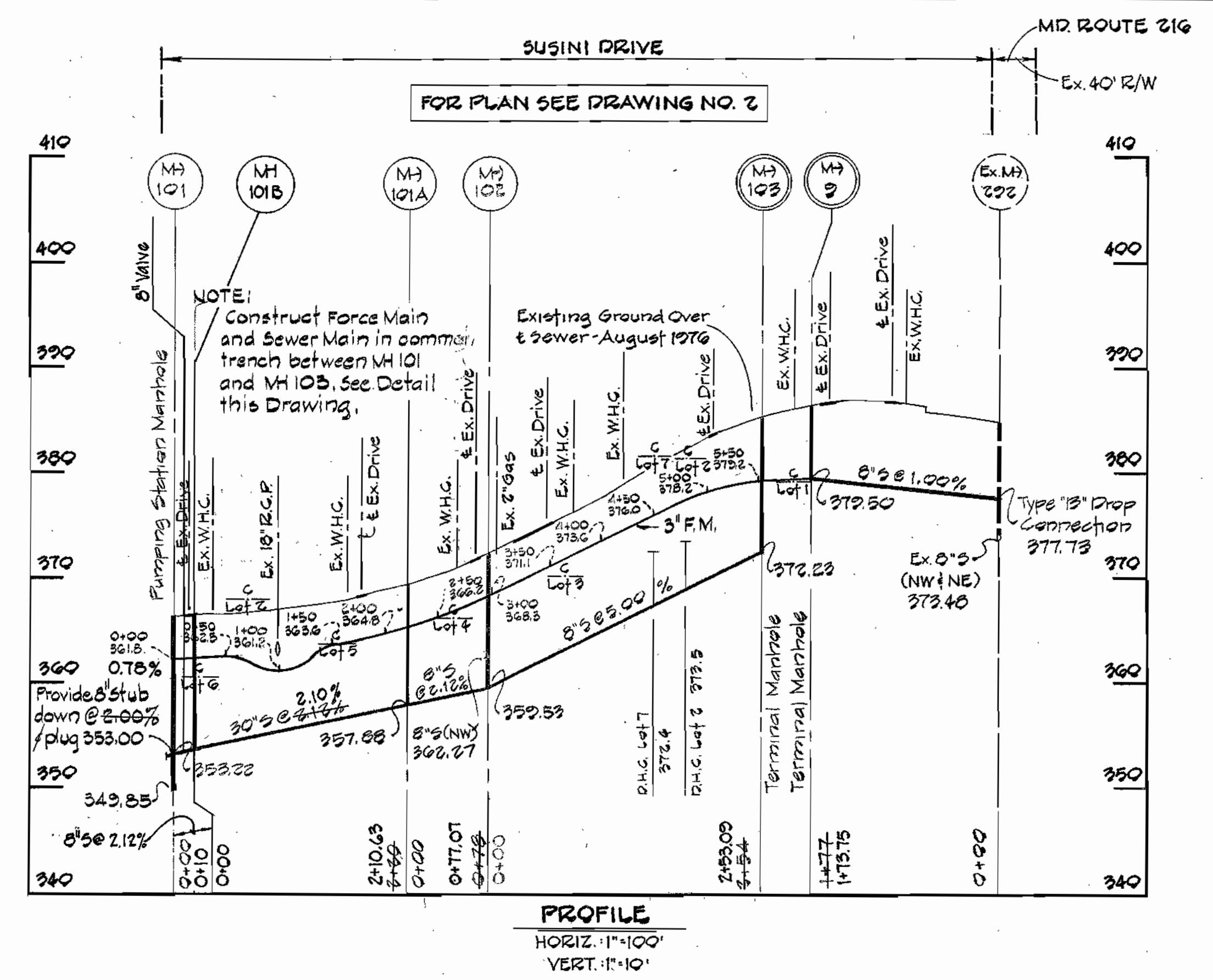
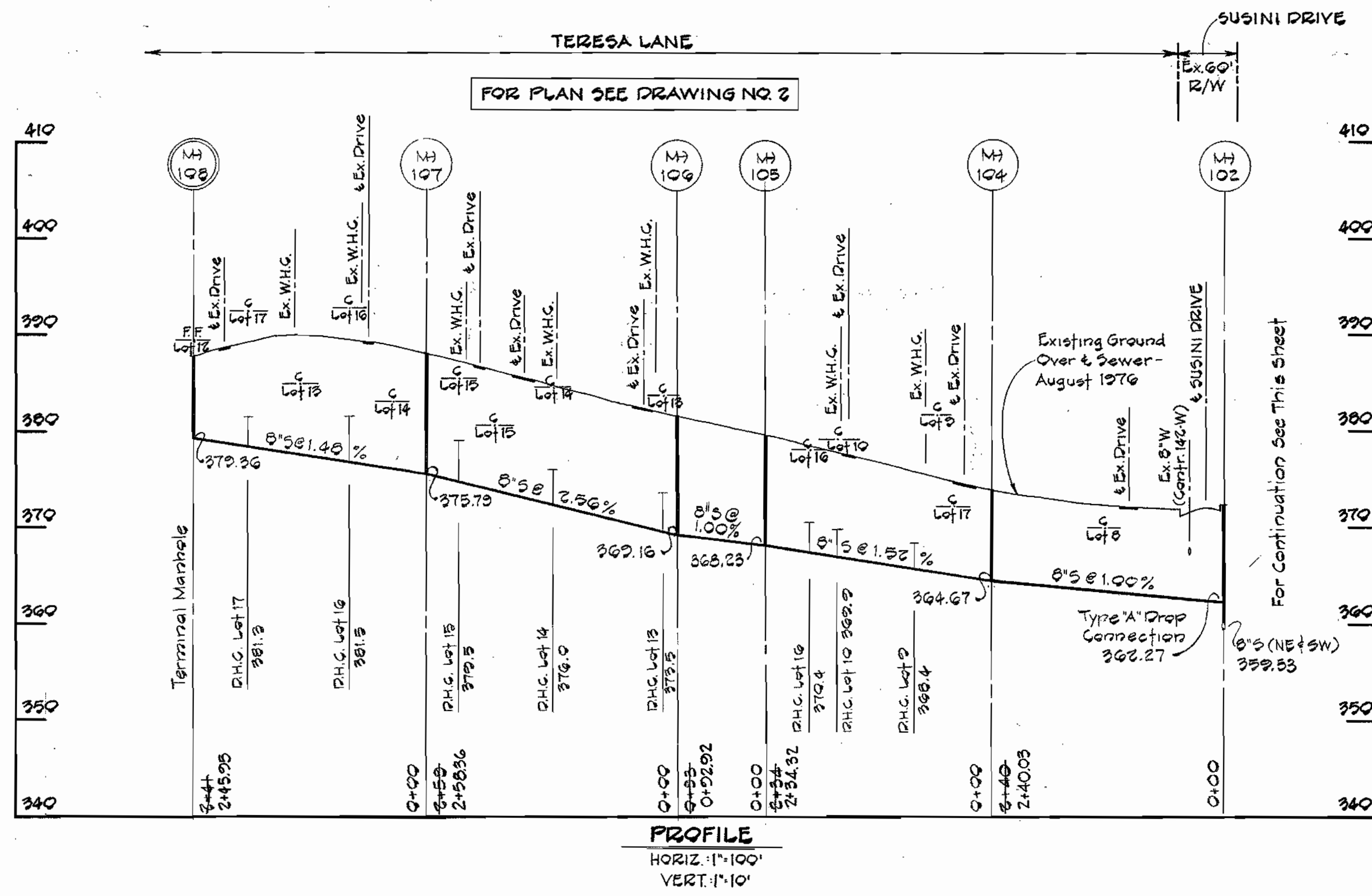
DEPARTMENT OF PUBLIC WORKS
 HOWARD COUNTY, MARYLAND
 2-17-77
 DATE
 W.O. Felbert
 CHIEF BUREAU OF ENGINEERING
 2-16-77
 DATE

CONTRACT NO. 2717-S
FOR SANITARY SEWERS
PLAN
CAPITAL PROJECT NO. S-4-6049

LAKEVIEW SANITARY SEWERS
 ELECTION DISTRICT NO. 6
 HOWARD COUNTY, MARYLAND

DRAWING NO. 2 OF 4
SCALE 1"=50'

DESIGNED: REP
DRAFTED: ARZ
CHECKED: EDC



PURDUM & JESCHKE
ENGINEERS
1023 N. CALVERT ST.
BALTIMORE, MARYLAND

DEPARTMENT OF PUBLIC WORKS
HOWARD COUNTY, MARYLAND
DATE: 2-17-77
CHIEF BUREAU OF ENGINEERING

CONTRACT NO. 2717-S
CAPITAL PROJECT NO. S-4 6049

PROFILES AND DETAILS
FOR SANITARY SEWERS

LAKEVIEW SANITARY SEWERS
ELECTION DISTRICT NO. 6
HOWARD COUNTY, MARYLAND

DRAWING NO. 4	SCALE As Shown	DESIGNED: REP
OF 4		DRAFTED: REC
		CHECKED: EDC

CONTRACT NO. 2717-S
LAKEVIEW SANITARY SEWERS
SUSINI DRIVE AND TERESA LANE
CAPITAL PROJECT S-4 6049