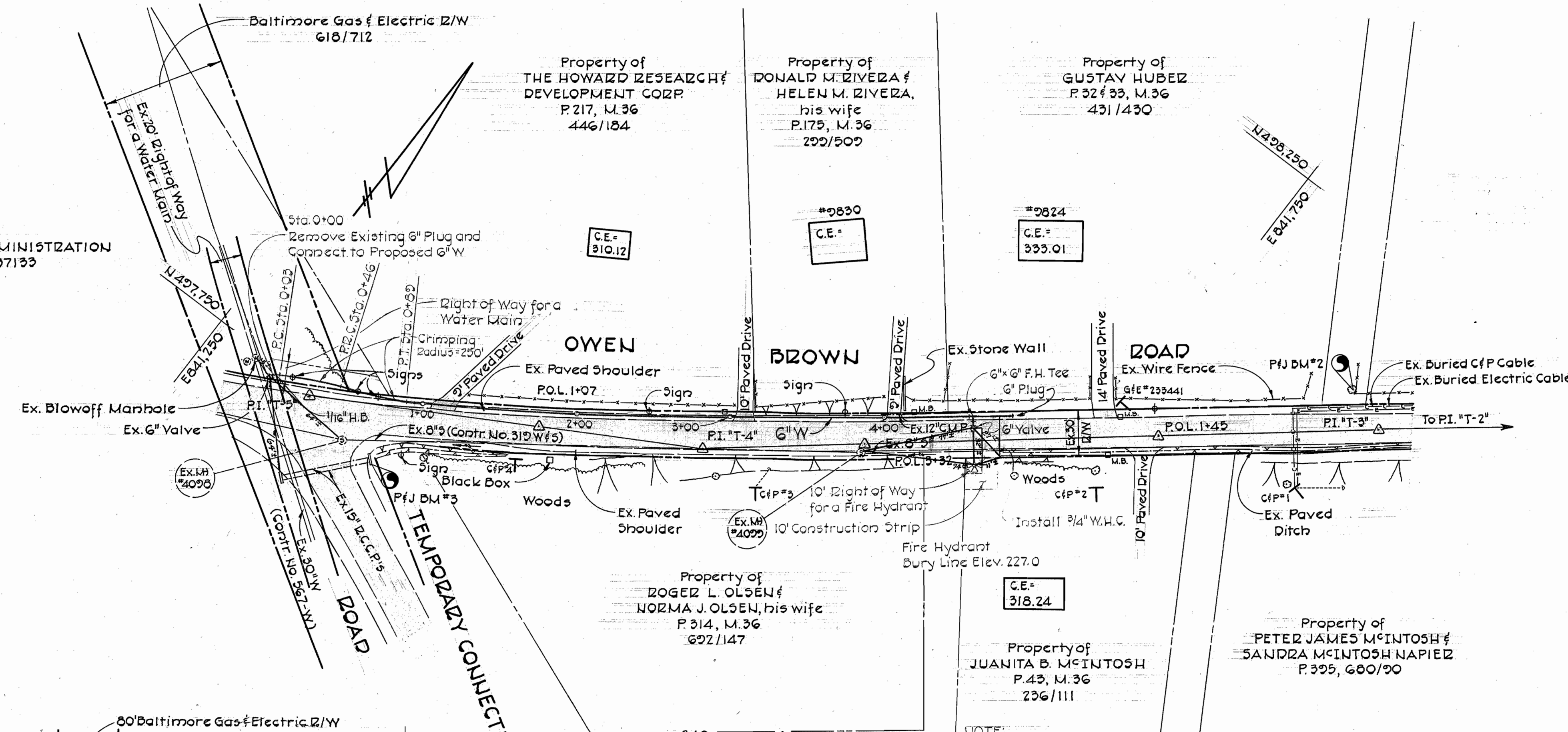


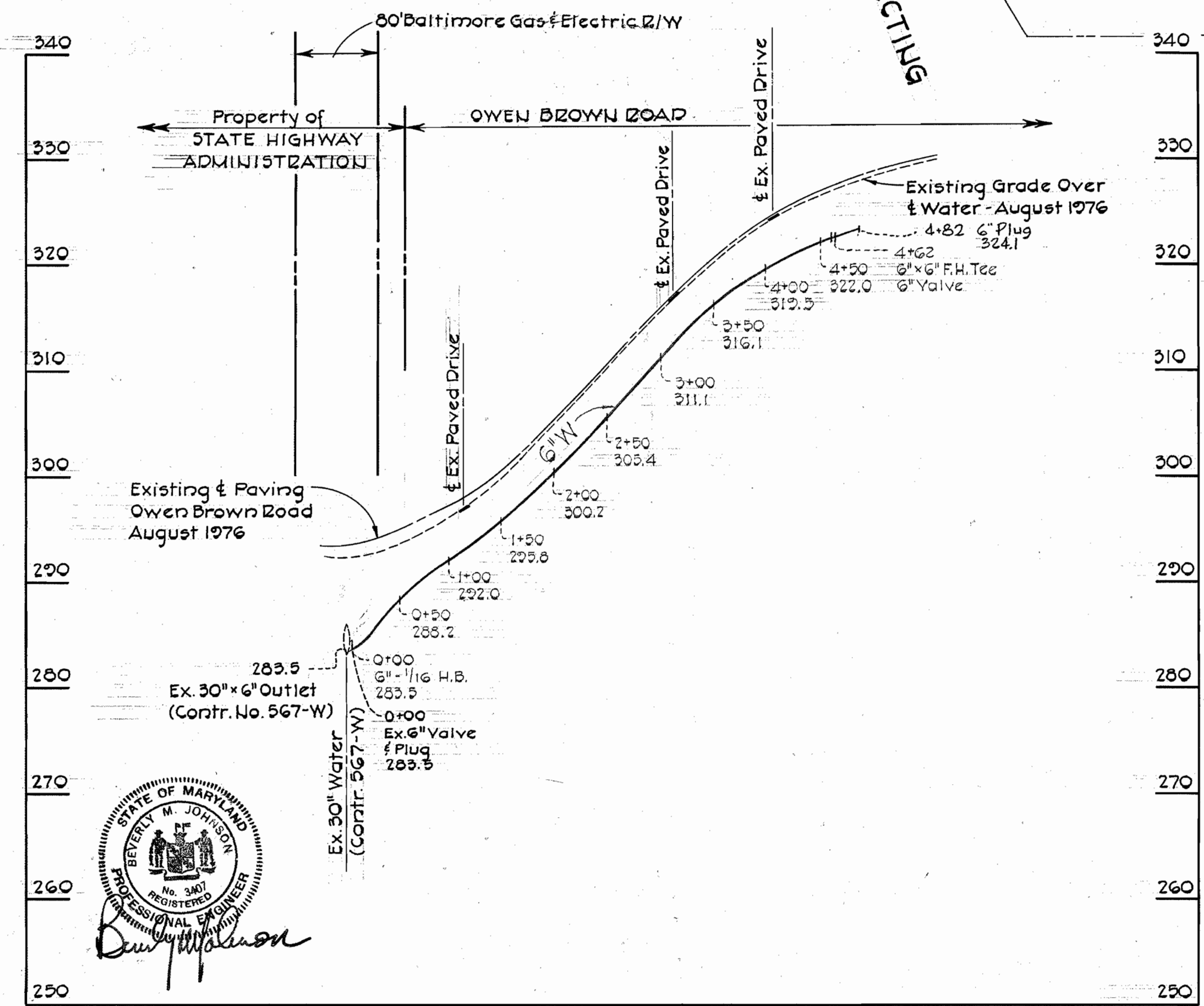
VICINITY MAP
Scale: 1" = 400'

GENERAL NOTES

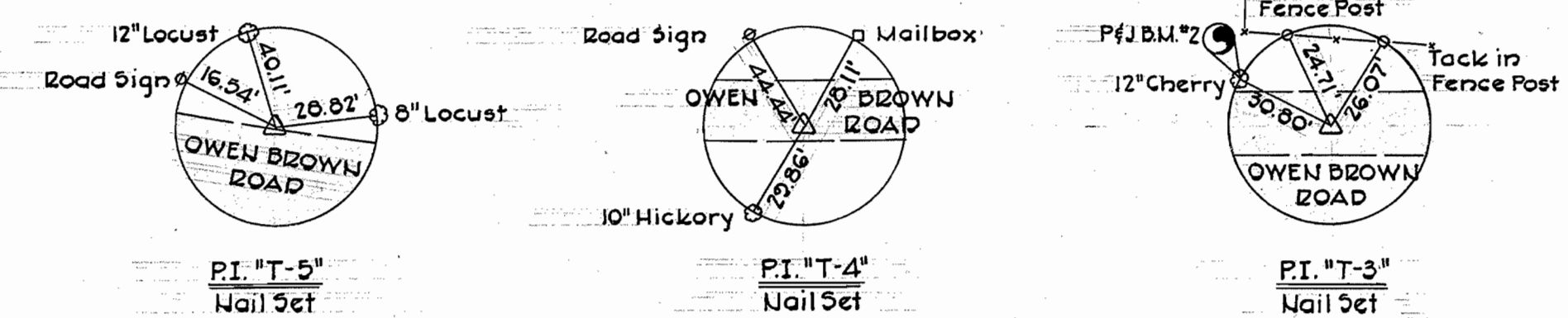
1. Approximate locations of existing mains are shown. The contractor shall take all necessary precautions to protect existing mains and services and maintain uninterrupted supply. Any damage incurred shall be repaired immediately.
2. All pipe elevations shown are invert elevations.
3. Clear all utilities by a minimum of 6". Clear all poles 2'-0" minimum or tunnel as required.
4. For standard details see Howard County Standards.
5. Contractor shall locate existing utilities in advance of construction operations in the vicinity of proposed utilities.
6. Contractor shall notify the following utilities or agencies at least five (5) days before starting work shown on these plans:
Baltimore Gas and Electric Company - Underground Electric Distribution Engineering - "Damage Control!" - 234-5691
Baltimore Gas and Electric Company - Underground Gas Distribution Engineering - 659-0100
Chesapeake and Potomac Telephone Company - 725-9976
Miss Utility - 559-0100
7. Buttress or anchor all water main fittings with concrete. All valves shall be strapped to tees in accordance with standard details.
8. All water mains to have a minimum of 3.5' cover unless otherwise noted.
9. All fire hydrants shall be strapped to the tee and shall be buttressed with concrete in accordance with the standard details. Cost of strapping fire hydrants and valves to be included in the unit price bid for furnishing and installing fire hydrants. Soil around the fire hydrant to be compacted in accordance with Section 5-15 of the Howard County Standard Specifications.
10. Bury line elevations on fire hydrants shall be set to the elevations shown on the plans.
11. Horizontal and Vertical control is based on the Maryland State Grid Coordinate System.



NOTE:
Contractor shall grade around fire hydrant in accordance with Detail WY-43. Cost for this item of work shall be included in the unit price bid for furnishing and installing fire hydrant.



PROFILE
Horz. 1" = 100'
Vert. 1" = 10'



PLAN
Scale: 1" = 50'

BENCH MARKS

P&J B.M. #2 Elev. 336.08
3 nails in 12" cherry tree, 31'± northwest of P.I. "T-3".

P&J B.M. #3 Elev. 293.41
Southeast corner of a headwall, 61'± southeast of P.I. "T-5".

QUANTITIES			
ITEM	PROPOSED	AS BUILT	
6" Water	480 L.F.	514 L.F. DIP	
Fire Hydrant	1 Ea.	1 Ea.	
6" Valves	1 Ea.		
6" x 6" Tees	1 Ea.		
3/4" W.H.C.	27 L.F.		

6" Water: DIP-Griffin

Contract No. 710-D-W
McIntosh Property
Owen Brown Road
Water Main Extension

PURDUM & JESCHKE
ENGINEERS
1023 N. CALVERT ST.
BALTIMORE, MARYLAND

DEPARTMENT OF PUBLIC WORKS
HOWARD COUNTY, MARYLAND
11-18-76
DATE

CONTRACT NO. 710-D-W

PLAN AND PROFILE
WATER MAIN

COLUMBIA
MCINTOSH PROPERTY
OWEN BROWN ROAD
ELECTION DISTRICT NO. 6 GUILFORD

DRAWING SCALE
NO. 1
OF 1
As Shown

DESIGNED: RDR
DRAFTED: ARZ
CHECKED: TAF