

B.M.-3341002-B

Elev. 475.77'

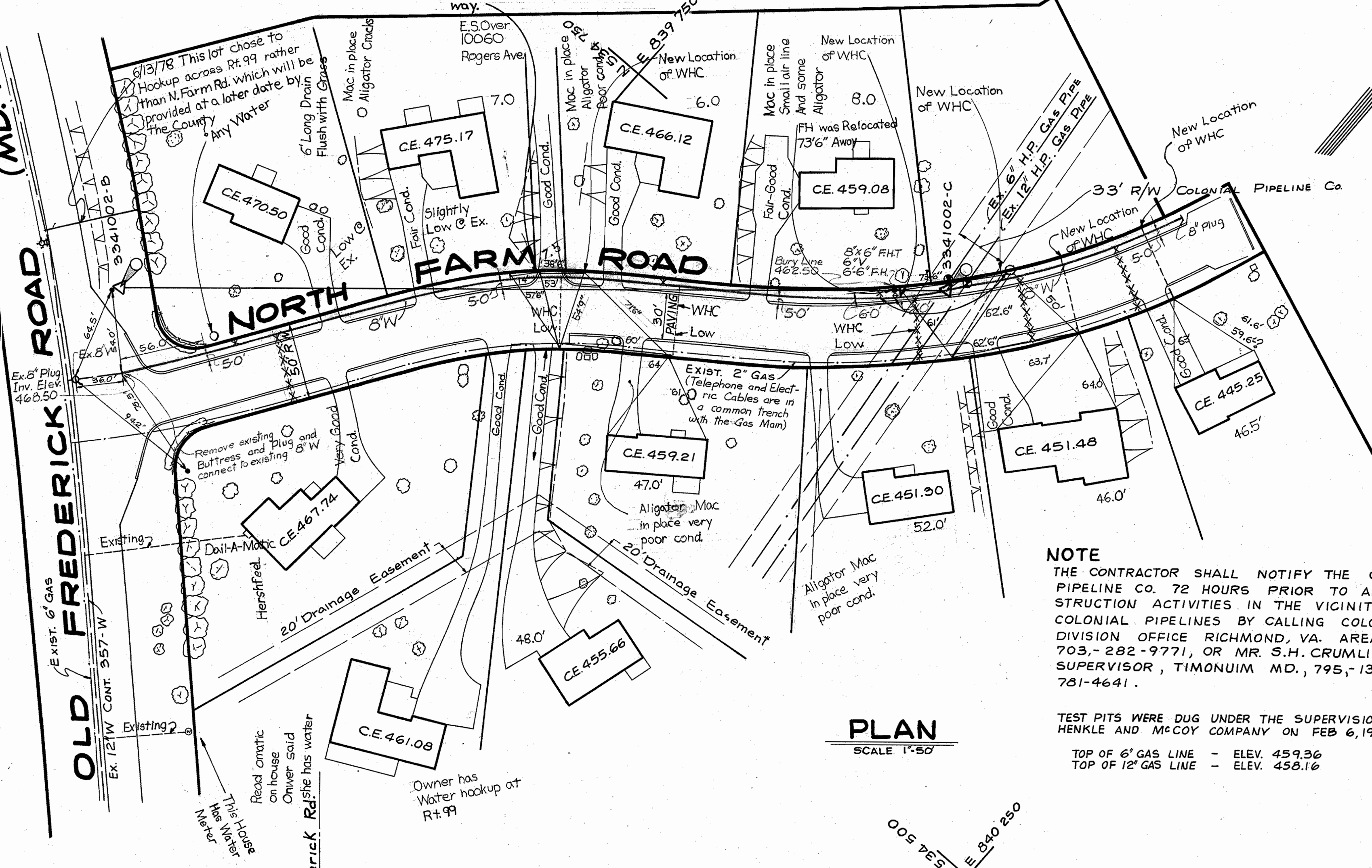
B.M.-3341002-C

Elev. 461.25

5/8" Rebar set approx. 9' from C/P pole #85 west of North Farm Rd. on N. side of MD. RT. 99, Rebar is set 0.2' below surface.

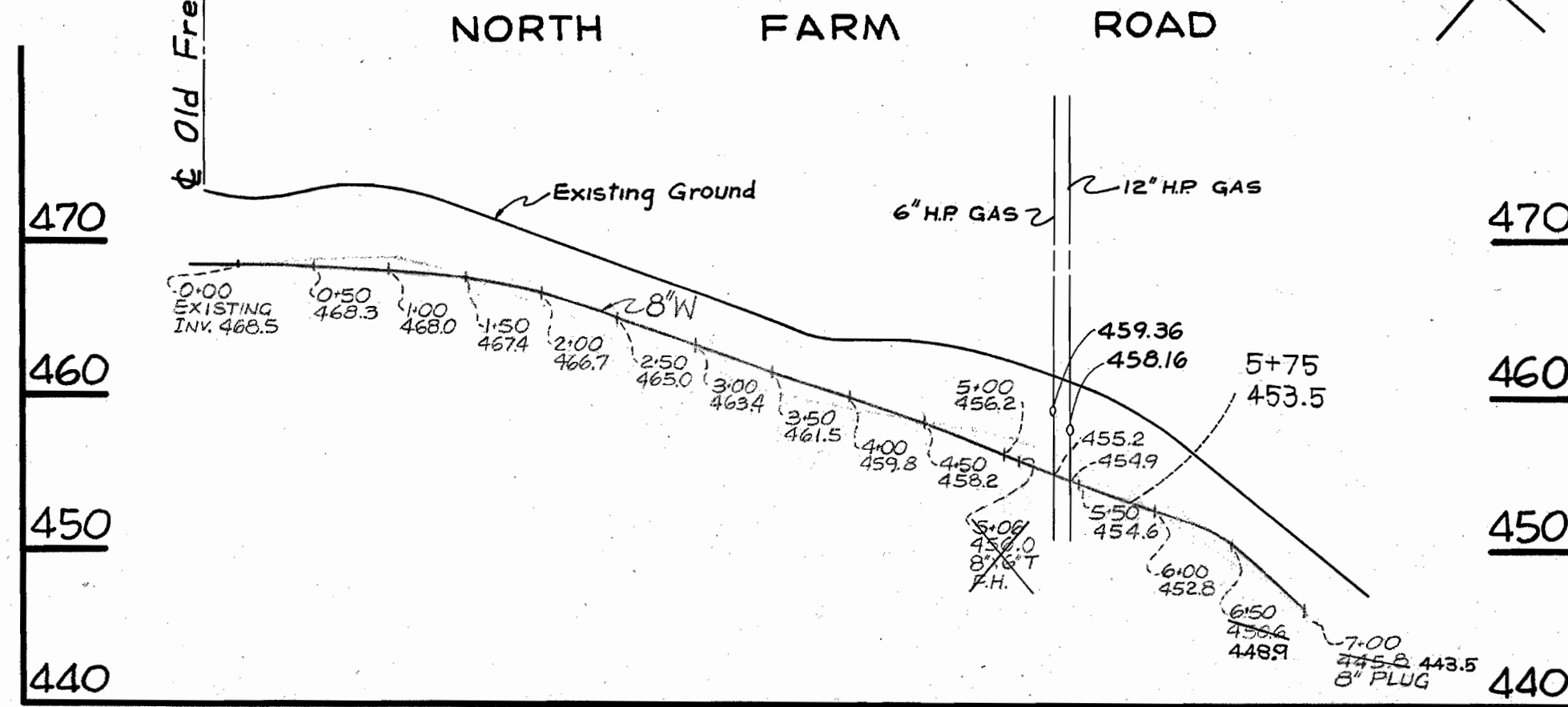
5/8" Rebar set approx. 3' off face of curb on North Farm Rd. at house #2536. Rebar is set 0.2' below surface.

(MD. RT. 99)



PLAN

SCALE 1"=50'



PROFILE

HORT. - 1"=100'  
VERT. - 1"=10'

NOTE

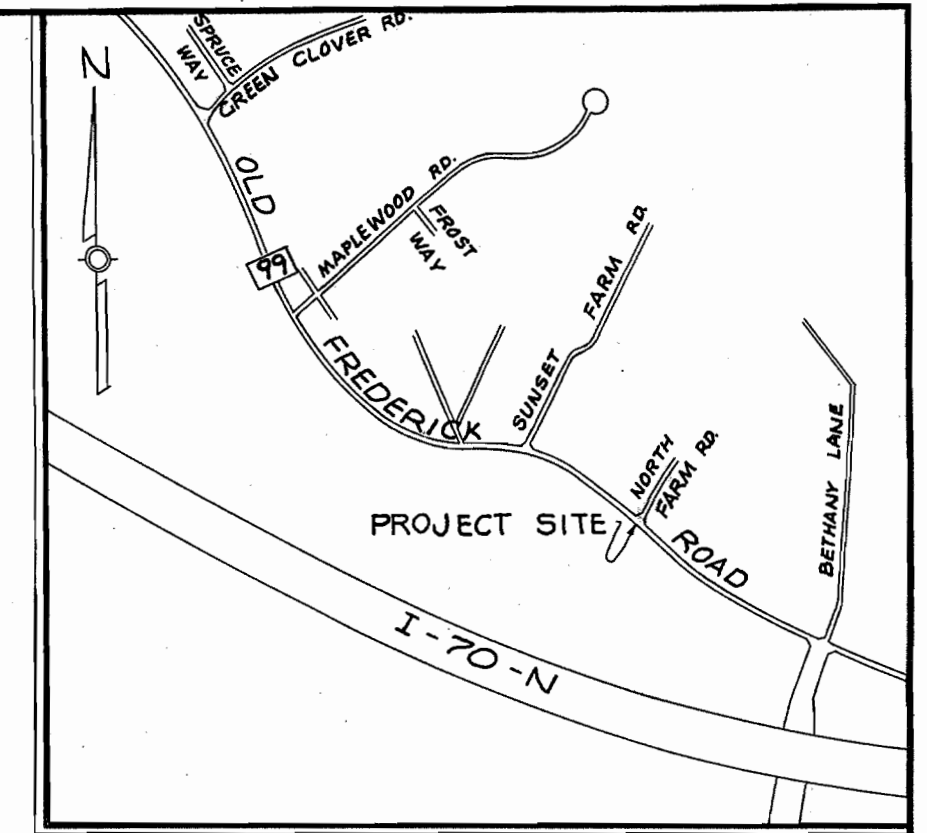
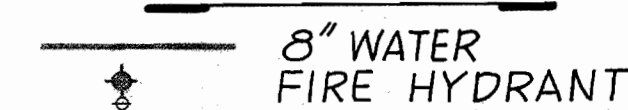
THE CONTRACTOR SHALL NOTIFY THE COLONIAL PIPELINE CO. 72 HOURS PRIOR TO ANY CONSTRUCTION ACTIVITIES IN THE VICINITY OF COLONIAL PIPELINES BY CALLING COLONIAL'S DIVISION OFFICE RICHMOND, VA. AREA CODE 703-282-9771, OR MR. S.H. CRUMLICH, AREA SUPERVISOR, TIMONUM MD., 795-1390 OR 781-4641.

TEST PITS WERE DUG UNDER THE SUPERVISION OF THE HENKLE AND MCCOY COMPANY ON FEB 6, 1976

TOP OF 6" GAS LINE - ELEV. 459.36  
TOP OF 12" GAS LINE - ELEV. 458.16

ITEM	QUANTITY	AS-BUILT	SUPPLIER
8" Water	700 LF	709.5	D.I.P.
Fire Hydrant	1		

LEGEND



VICINITY MAP  
SCALE: 1"=1200'

GENERAL NOTES

- APPROXIMATE LOCATIONS OF EXISTING UTILITIES ARE SHOWN. THE CONTRACTOR SHALL TAKE ALL NECESSARY PRECAUTIONS TO PROTECT THE EXISTING UTILITIES AND TO MAINTAIN UNINTERRUPTED SERVICE. ANY DAMAGE INCURRED DUE TO THE CONTRACTOR'S OPERATION SHALL BE REPAIRED IMMEDIATELY AT THE CONTRACTOR'S EXPENSE.
- ALL PIPE ELEVATIONS SHOWN ARE INVERT ELEVATIONS.
- THE CONTRACTOR SHALL LOCATE EXISTING UTILITIES WELL IN ADVANCE OF CONSTRUCTION ACTIVITIES.
- FOR ALL STANDARD DETAILS SEE STANDARDS BOUND IN THE SPECIFICATIONS.
- CLEAR ALL UTILITIES BY A MINIMUM OF 6" INCHES. CLEAR ALL UTILITY POLES BY 2'-0" MINIMUM OR TUNNEL AS REQUIRED. ANY COST INCURRED TO THE CONTRACTOR FOR TUNNELING OR BRACING POLES SHALL BE INCLUDED IN UNIT PRICE BID FOR EXCAVATION.
- THE CONTRACTOR SHALL NOTIFY THE FOLLOWING UTILITIES OR AGENCIES AT LEAST FIVE (5) WORKING BEFORE STARTING WORK SHOWN ON THESE PLANS.  
BALTIMORE GAS AND ELECTRIC COMPANY - UNDERGROUND ELECTRIC DISTRIBUTION ENGINEERING "DAMAGE CONTROL" - MR. G.J. ZWILLER, MANAGER 234-5691  
BALTIMORE GAS AND ELECTRIC COMPANY - UNDERGROUND GAS DISTRIBUTION ENGINEERING - MR. BELL 234-5533  
MISS UTILITY - 800-441-8355
- BUTTRISS OR ANCHOR ALL WATER MAIN FITTINGS WITH CONCRETE. ALL VALVES SHALL BE STRAPPED TO TEES IN ACCORDANCE WITH STANDARD DETAILS.
- ALL WATER MAINS TO HAVE A MINIMUM OF 3.5' COVER UNLESS OTHERWISE NOTED.
- ALL FIRE HYDRANTS SHALL BE STRAPPED TO THE TEE AND SHALL BE BUTTRESSED WITH CONCRETE IN ACCORDANCE WITH STANDARD DETAILS. COST OF STRAPPED FIRE HYDRANTS AND VALVES TO BE INCLUDED IN THE UNIT PRICE BID FOR FURNISHING AND INSTALLING FIRE HYDRANTS. SOIL AROUND THE FIRE HYDRANT TO BE COMPACTED IN ACCORDANCE WITH SECTION 5-15 OF THE STANDARD SPECIFICATIONS.
- BURY LINE ELEVATION ON FIRE HYDRANT SHALL BE SET TO THE DEPTH SHOWN ON THE PLAN.
- TEST PITS SHALL BE DUG TO LOCATE EXISTING UTILITIES.
- ALL WATER HOUSE CONNECTIONS SHALL BE 3/4" UNLESS OTHERWISE NOTED.
- WATER SERVICES SHALL BE FOR INSIDE METER SETTINGS.
- TREES ARE TO BE PROTECTED FROM DAMAGE TO MAXIMUM EXTENT, TREES LOCATED WITHIN THE CONSTRUCTION STRIPS ARE NOT TO BE REMOVED OR DAMAGED BY THE CONTRACTOR.
- ALL WATER MAINS TO BE C.I.P., D.I.P. OR A.C.P. UNLESS OTHERWISE NOTED.
- ALL HORIZONTAL CONTROLS ARE BASED ON MARYLAND STATE COORDINATES.
- ALL VERTICAL CONTROLS ARE BASED ON MARYLAND STATE DATUM.

Contract No. 704-W  
North Farm Road  
Howard County  
Capital Project W-6-8085

BUREAU OF ENGINEERING  
INSPECTION AND SURVEY DIVISION

DEPARTMENT OF PUBLIC WORKS  
HOWARD COUNTY, MARYLAND  
2-8-77  
DIRECTOR OF PUBLIC WORKS DATE CHIEF BUREAU OF ENGINEERING DATE

CONTRACT NO. 704-W

PLAN AND PROFILES  
OF WATER MAIN EXTENSION

ELECTION DISTRICT  
ELICOTT CITY NO. 2

DRAWING NO. 1	SCALE AS SHOWN	Des. M.D.C.
OF 1		Dwn. M.D.C.
		Chk. F.A.