

WATER CODE F01
SEWER CODE 1451800, 1451900

UNIT TABULATION

BLDG NO.	1 BR	2 BR
7	24	24
8	60	-
9	24	-
12	6	42
13	-	60
	114	126
TOTAL UNITS = 240		

PATAPSCO I.T.P. APPLICATION NO. 07

TYPE OF BUILDING	APARTMENTS
NO. OF LOTS	1
NO. OF WATER HOUSE CONNECTIONS	5
NO. OF SEWER HOUSE CONNECTIONS	18
DRAINAGE AREA	SUCKER BRANCH (PATAPSCO)

USE & OCCUP. PERMIT & SEWER CONN'S WILL NOT BE ALLOWED UNTIL PATAPSCO I.T.P. IS OPERATIONAL

CONTRACT 685-D-W&S
"NORMANDY WOODS APARTMENTS"
 SECTION 2
 Water and Sewer Extension

Howard County, Maryland

Department of Public Works

QUANTITIES

Items	Bid	As Built	Material / Supplier
8" Sewer	1807 L.F.	1762 L.F.	CERTAINTEED
6" Sewer	620 L.F.	634 L.F.	CERTAINTEED
8" Water	2079 L.F.	2079 L.F.	GRIFFEN
6" Water	88 L.F.	102 L.F.	"
4" Water	141 L.F.	145 L.F.	"
2" Water	10 L.F.	10 L.F.	"
6" F.H.	5 EA.	5 EA.	AMERICAN-DARLING

GENERAL NOTES

- Approximate location of existing main are shown. The Contractor shall take all precautions to protect existing main and services and maintain uninterrupted supply. Any damage incurred will be repaired immediately.
- All water pipe elevations shown are \odot -elevations. Sanitary and drain pipes are \ominus -elevations.
- The Contractor shall provide a joint in all sewer mains within 2'-0" of exterior manhole walls.
- All manholes shall be 4'-0" inside diameter.
- Block all fittings with concrete. See standards bound in specifications.
- Bury line elevations for fire hydrants shall be set to the elevations shown on the drawings.
- All fire hydrants shall be strapped to the tee and shall be buttressed with concrete in accordance with standard details.
- All horizontal controls are based on Maryland State Datum.
- All vertical controls are based on U.S.G.S. Datum.
- All 3"x2" & 2"x2" connections shall be installed w/ 2" copper pipe outlet corporation cask assembly.
- The contractor shall notify the following utilities or agencies at least five days before starting work on this plan.
BALTIMORE GAS & ELECTRIC 599-0100
UNDERGROUND GAS DISTRIBUTION ENGINEERING
UNDERGROUND ELECTRIC DISTRIBUTION ENGINEERING DAMAGE CONTROL 284-5291
C & P TELEPHONE COMPANY 727-9976
- The Contractor shall locate existing utilities a minimum of two weeks in advance of construction operations in vicinity of utilities.
- All water mains shall have a minimum of 3 1/2' cover.
- All water mains shall be C.I.P. or D.I.P. unless otherwise noted.
- All sewer mains shall be C.S.P.X., V.C.P.X. or A.C.P. class 2400 otherwise noted.



3/17/79

No.	Date	Description
1	1-28-80	add F.H. and name change Weaton Way

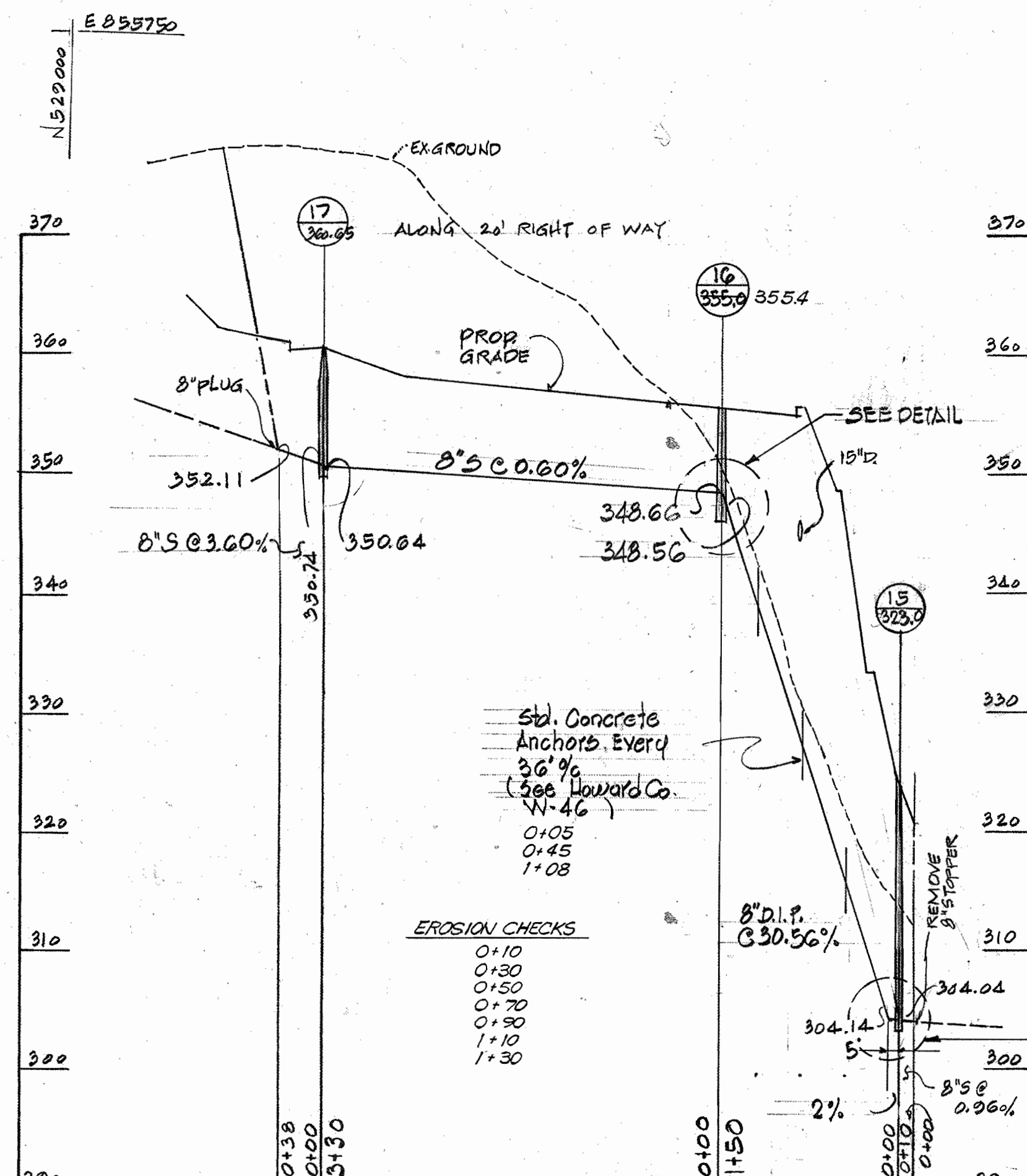
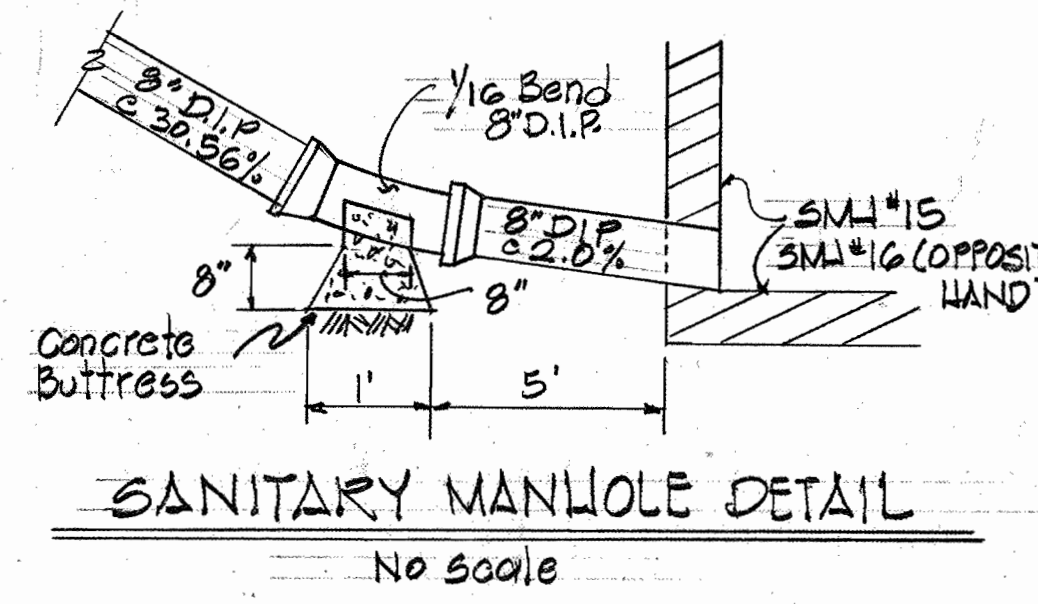
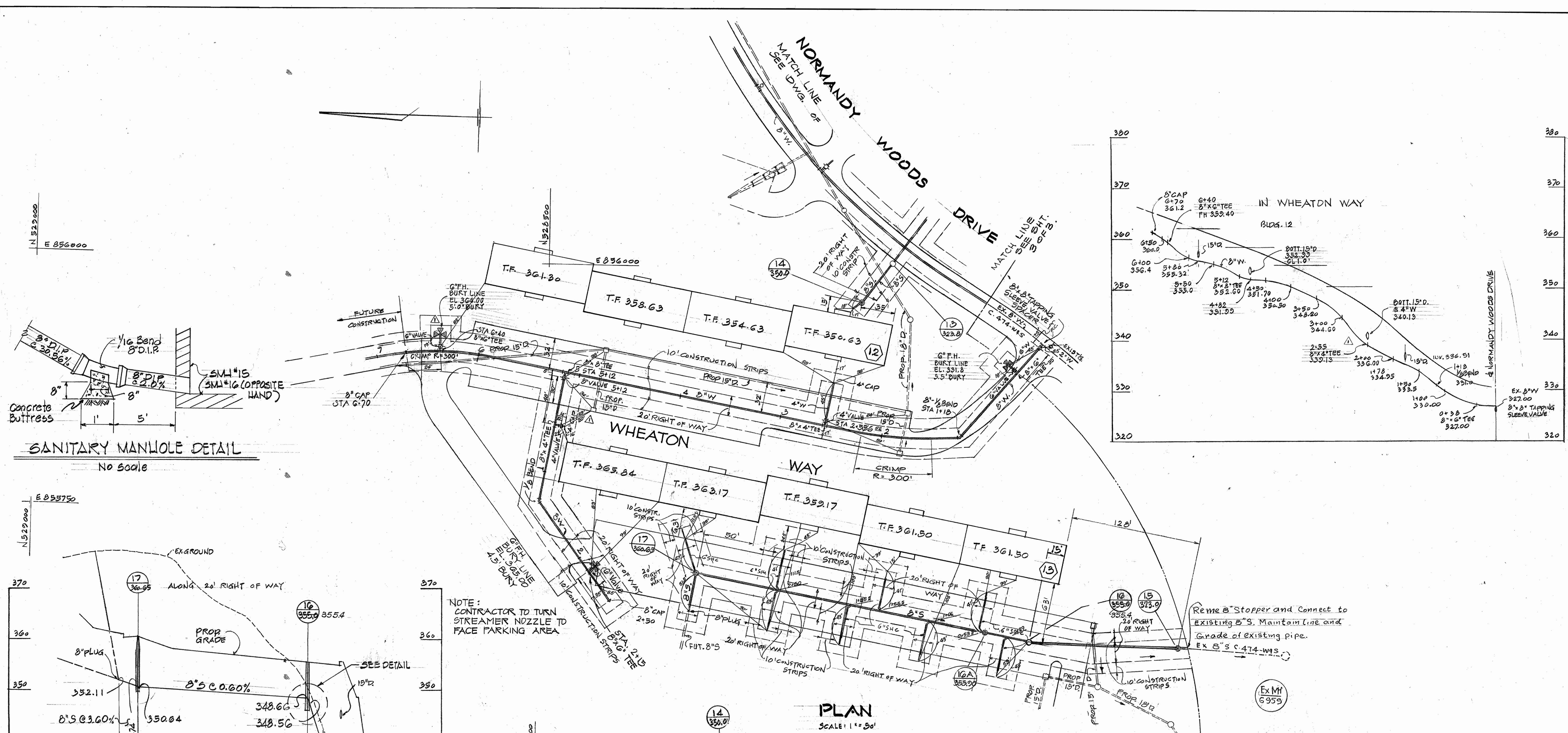
DEPARTMENT OF PUBLIC WORKS
 HOWARD COUNTY, MARYLAND
 Director of Public Works: *Mark E. Newman* 11-8-79
 Chief Bureau of Engineering: *Allen J. Brown* 11/8/79
 Chief Bureau of Utilities: *C. B. Glus* 11/7/79

KIDDE CONSULTANTS, INCORP.
 1020 CROMWELL BRIDGE ROAD
 TOWSON, MARYLAND 21204

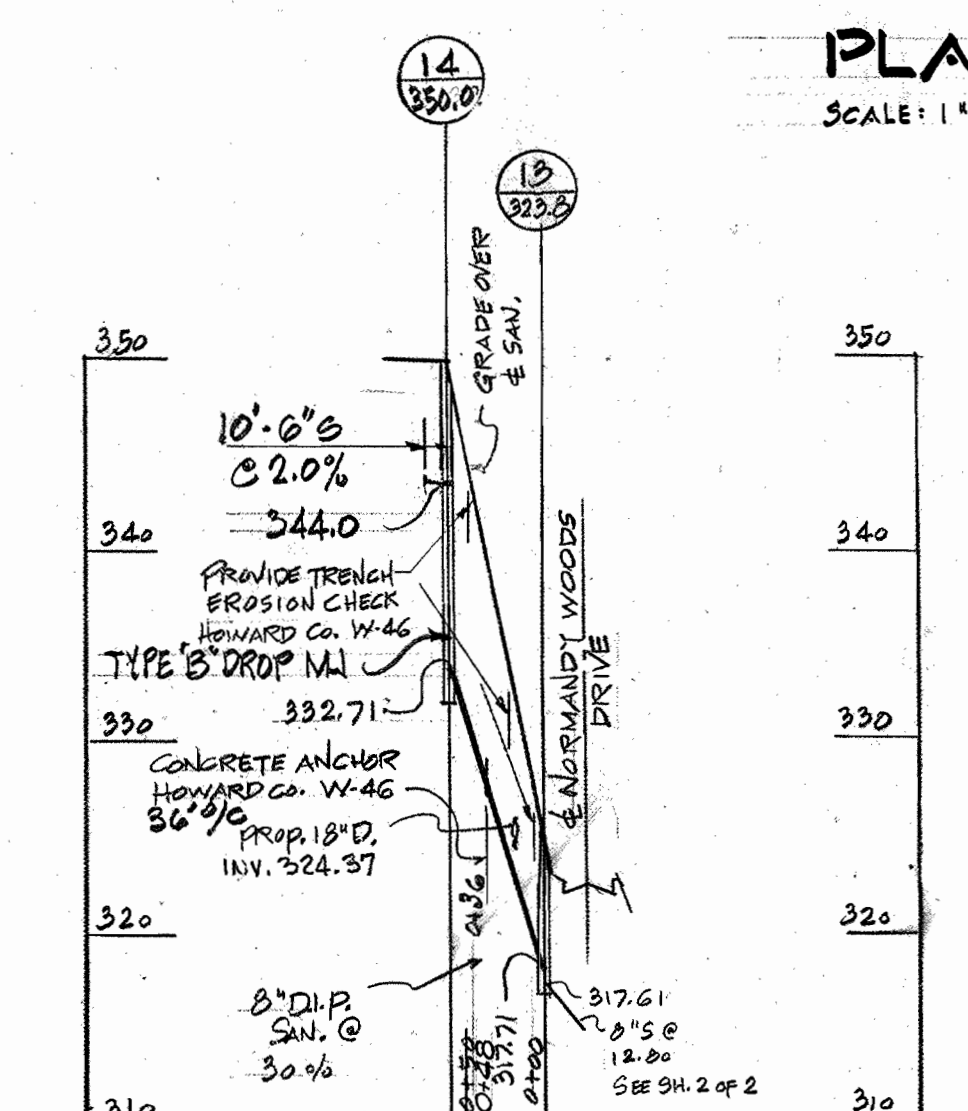
CONTRACT NO. 685-D-W-S
 PLAN OF WATER AND SEWER MAINS

NORMANDY WOODS APARTMENTS
 SECTION 2
 ELECT. DIST. 2

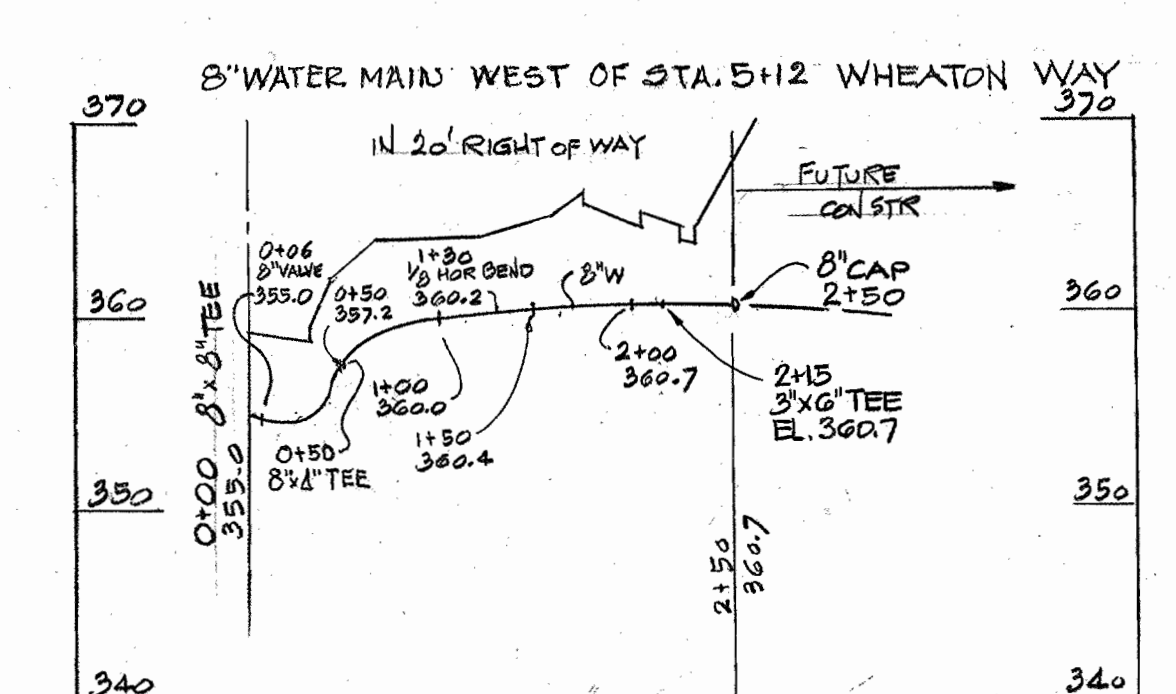
Drawing No. 1 of 3
 Scale As Shown



NOTE: CONTRACTOR TO TURN STREAMER NOZZLE TO FACE PARKING AREA



PROFILES
SCALE: 1" = 10' HOR
1" = 10' VERT



3	6-27-80	PROFILE M417 TO M418 ADDED SANITARY MANHOLE DETAIL
2	1-28-80	add F.H. to plan & profile change road name Wheaton Way
1	11-20-79	Rev. W Profile, Reloc. F.H., Add 15" ST. DE
Rev No	Rev Date	Revision Description



NORMANDY WOODS
Section 2
Contract No. 685-D-W-5
3/17/79

DEPARTMENT OF PUBLIC WORKS
HOWARD COUNTY, MARYLAND
11-8-79
1/18/79

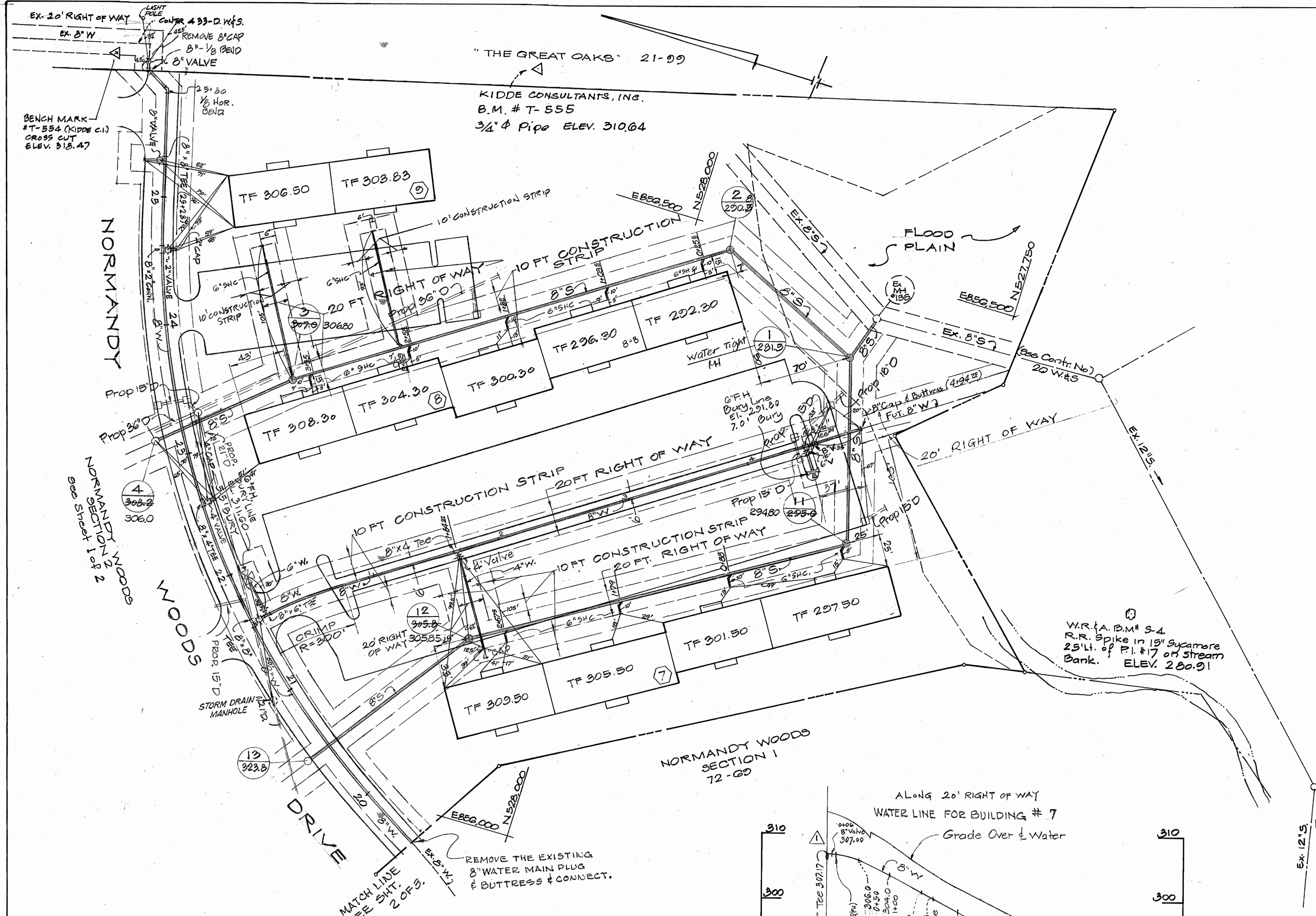
KIDDE CONSULTANTS, INC.
1020 CROMWELL BRIDGE ROAD
TOWSON, MARYLAND 21204

CONTRACT No. 685-D-W-5

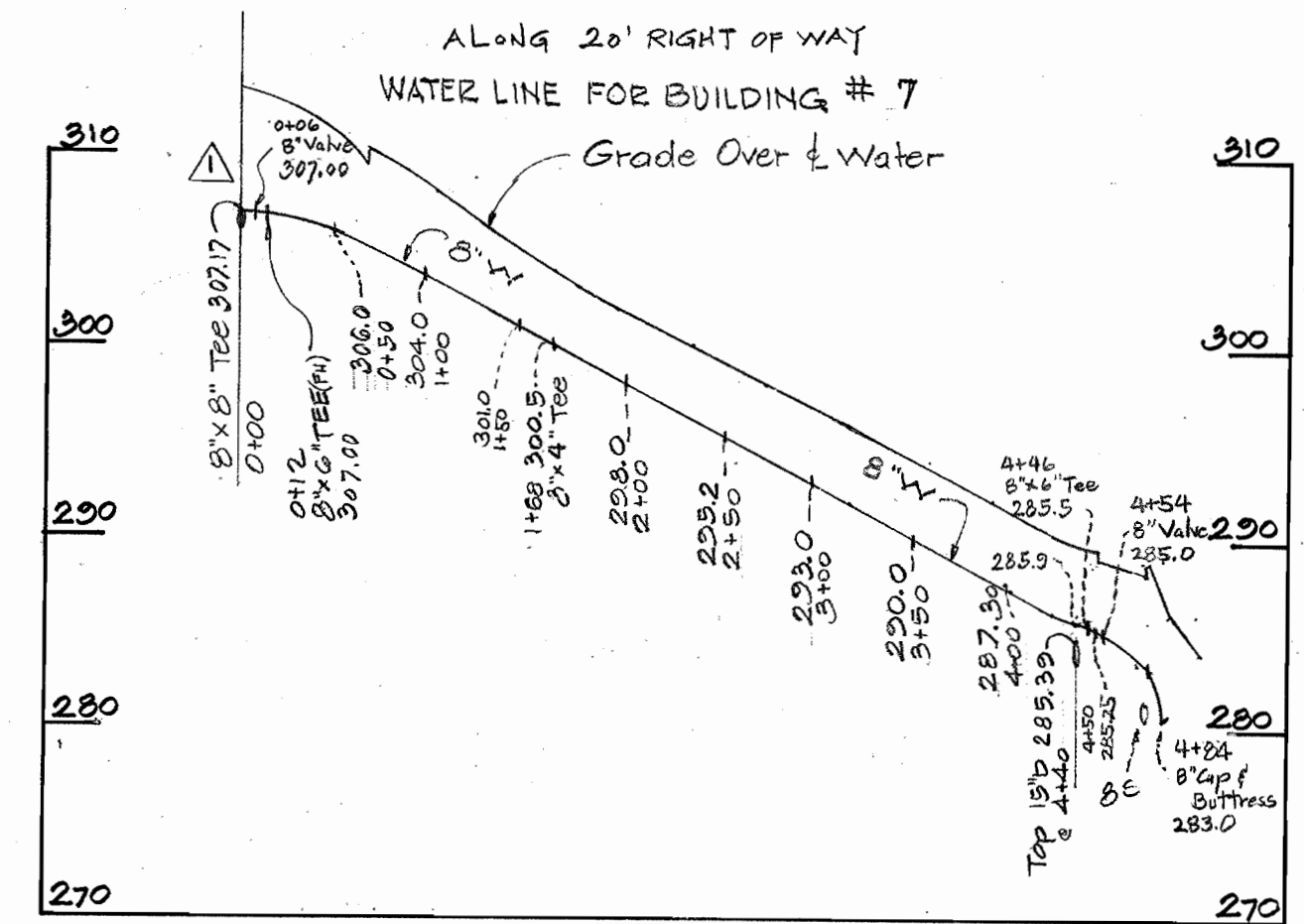
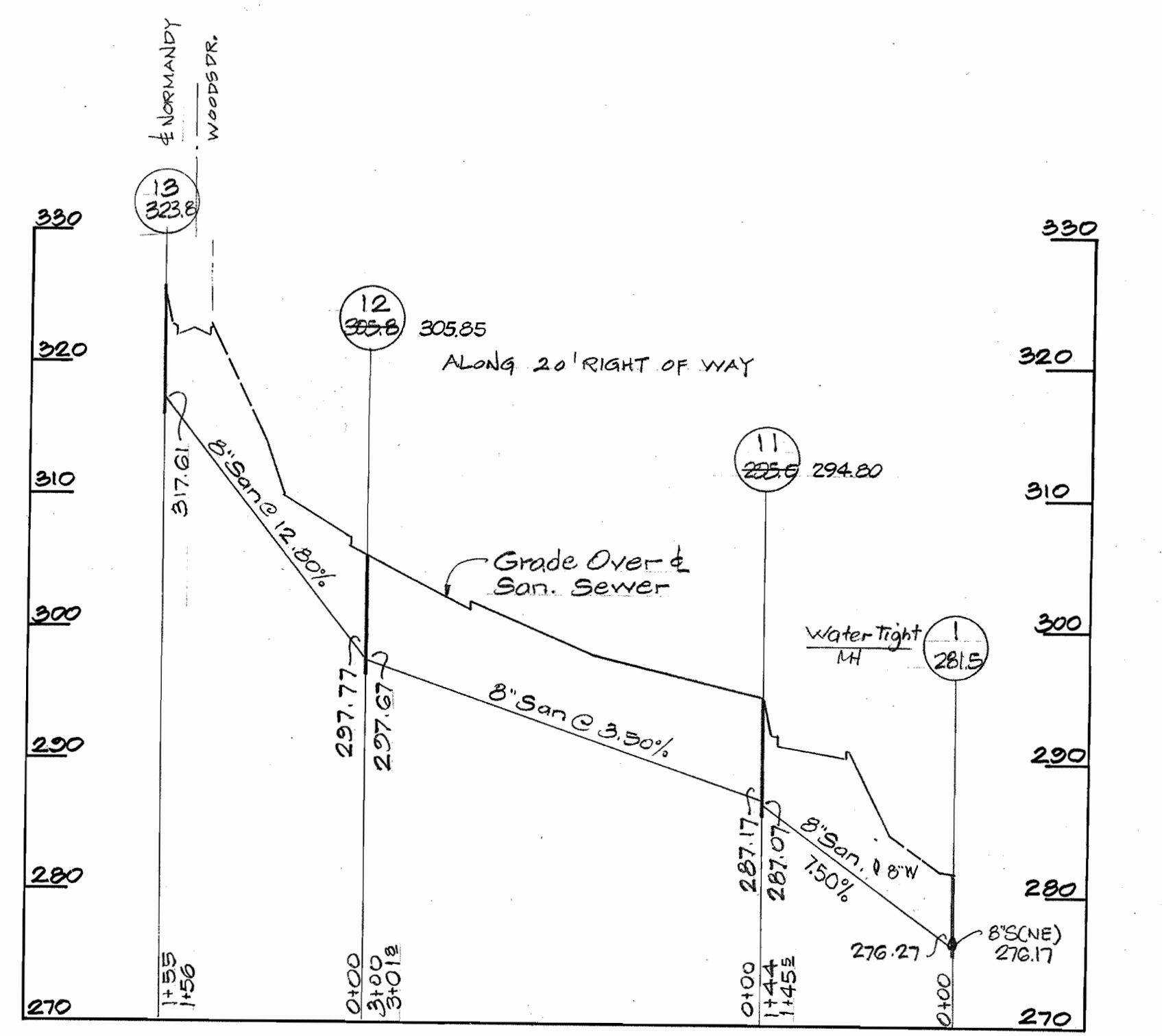
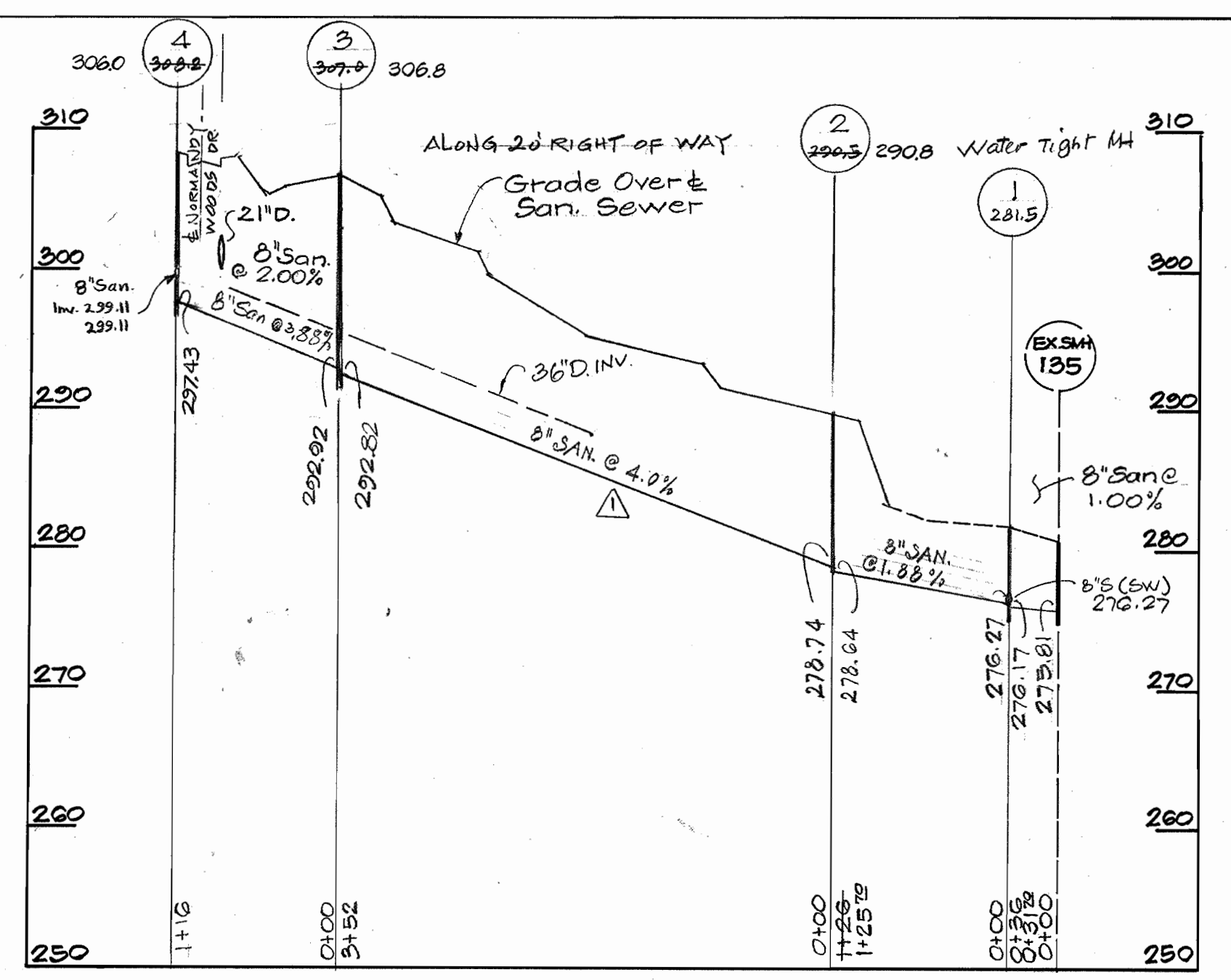
PLAN & PROFILE OF
WATER & SEWER MAINS

NORMANDY WOODS APARTMENTS
SECTION 2
ELECT. DIST. 2

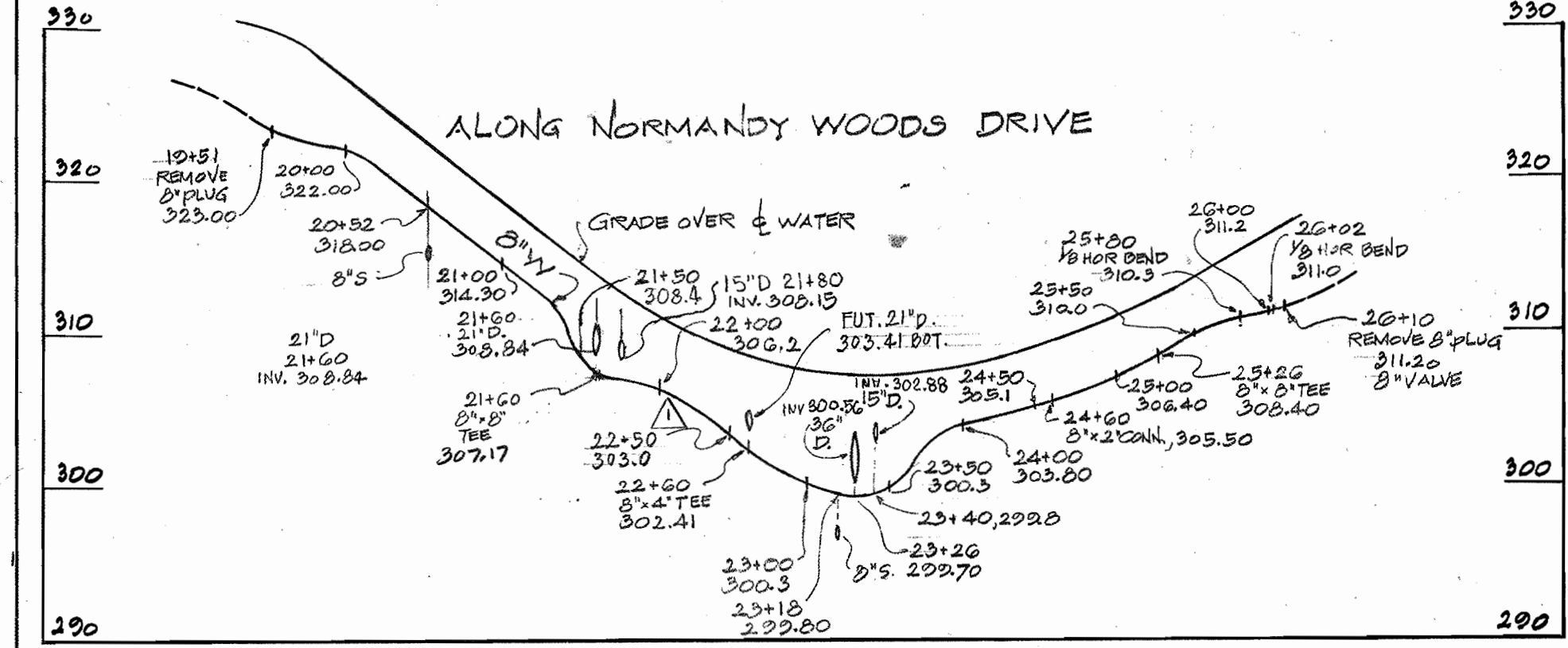
DRAWING No. 2 OF 3 SCALE AS SHOWN



PLAN
SCALE 1"=50'



PROFILE
HOR 1"=100'
VERT 1"=10'



DEPARTMENT OF PUBLIC WORKS
HARVARD COUNTY, MARYLAND
11-8-79
DIRECTOR OF PUBLIC WORKS DATE
CHIEF BUREAU OF ENGINEERING DATE CHIEF BUREAU OF UTILITIES DATE

KIDDE CONSULTANTS, INC.
1020 CROMWELL BRIDGE ROAD
TOWSON, MARYLAND 21204

CONTRACT NO. 685-D-W-3

PLAN & PROFILE OF WATER & SEWER MAINS

REV. NO.	KEY DATE	REVISION DESCRIPTION
1	11/79	Revised Profiles As Noted

NORMANDY WOODS APARTMENTS SECTION 2
ELECT. DIST. 2

NORMANDY WOODS
SECTION 2
CONTRACT NO. 685-D-W-3
DRAWING NO. 3 OF 3
SCALE AS SHOWN

