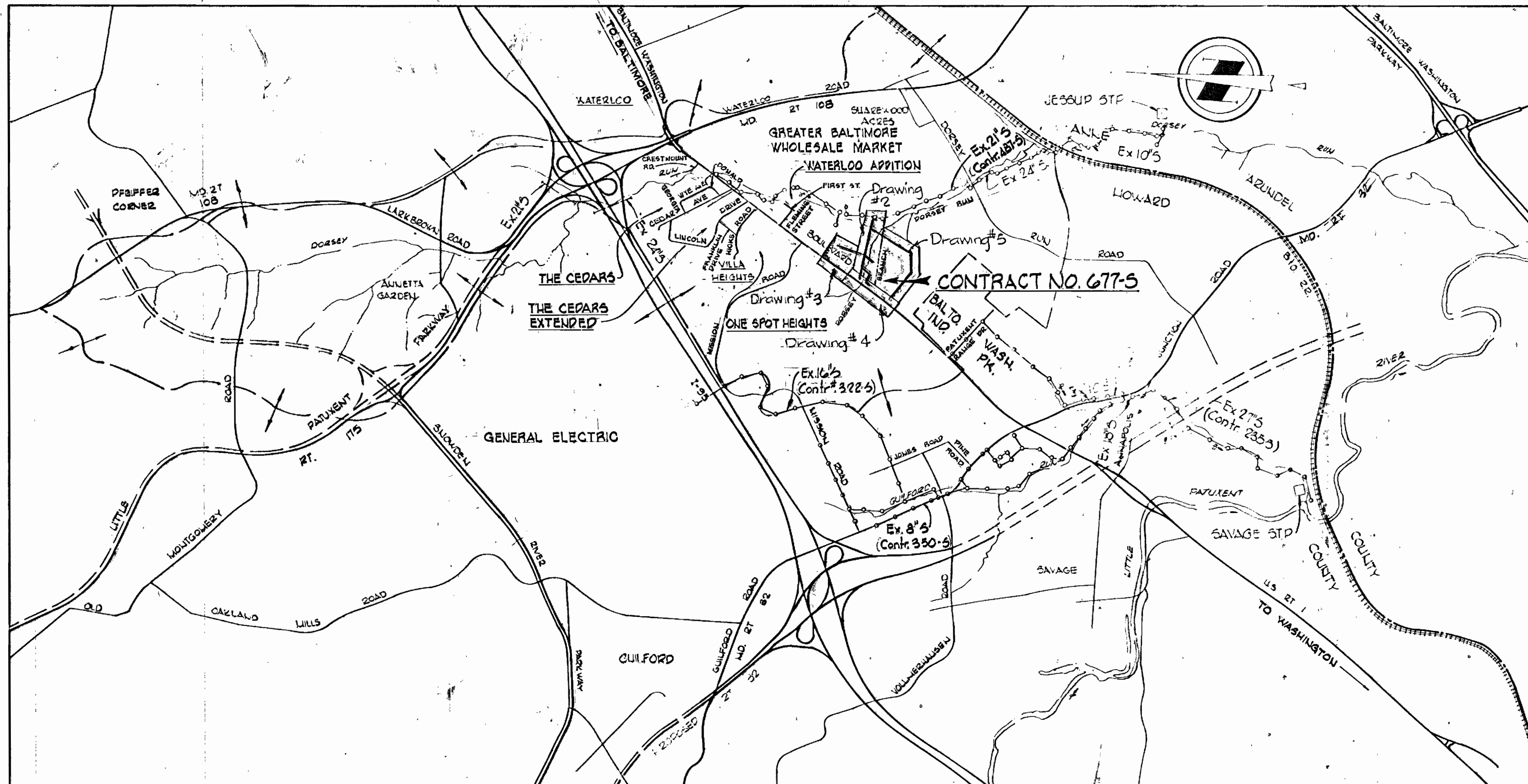


**CONSTRUCTION SEQUENCE  
SEDIMENT CONTROL PROCEDURES**

1. OBTAIN SEDIMENT CONTROL PERMIT (ARTICLE 15-05-3)
2. OBTAIN WATER RESOURCES ADMINISTRATION PERMIT (ARTICLE 40-25)
3. CLEAR, GRUB AND STRIP AS REQUIRED FOR SEWER CONSTRUCTION -- PROTECT STREAMS FROM EROSION OF STORED TOPSOIL.
4. CONSTRUCT DIKE AND SILT FENCE STRUCTURES IMMEDIATELY AFTER STRIPPING.
5. CONSTRUCT SEWER PIPE LINES.
6. RESTORE EROSION CONTROL STRUCTURES DISTURBED BY SEWER CONSTRUCTION.
7. STABILIZE DISTURBED AREAS AS CONSTRUCTION PROGRESSES WITH TEMPORARY SEEDING AND MULCHING (OR PERMANENT RESTORATION).
8. COMPLETE PERMANENT RESTORATION.
9. REMOVE SEDIMENT STRUCTURES WHEN DIRECTED.



**PROJECT NO. S-4-6071**

**DORSEY RUN**

**HOWARD COUNTY, MARYLAND**

**DEPARTMENT OF PUBLIC WORKS**

QUANTITIES			
ITEM	QUANTITY		
	Design	As-Built	Material/Supplier
12" Sewer	1750 LF	1740.65	PVC / E.T.I.
8" Sewer	4875 LF	4882.58	PVC / E.T.I.
Manhole	25	25	Terre Hill Conc. Prod.

THIS DEVELOPMENT PLAN IS APPROVED FOR SOIL EROSION AND SEDIMENT CONTROL BY THE HOWARD SOIL CONSERVATION DISTRICT

*Wm V. Rame*  
HOWARD S.C.D.  
9-13-82  
DATE

Sediment Control Measures for this Contract will be implemented in accordance with Article 15 of the Standard Specifications

RESERVED FOR HOWARD SOIL CONSERVATION DISTRICT AND MEETS TECHNICAL REQUIREMENT

*John M. Mohr*  
SIGNATURE DATE  
DIST. SOIL CONSERVATION SERVICE

WHITMAN, REQUARDT & ASSOCIATES  
ENGINEERS  
2315 ST. PAUL ST.  
BALTIMORE, MARYLAND

DEPARTMENT OF PUBLIC WORKS  
HOWARD COUNTY, MARYLAND  
*W. O. Miller*  
DIRECTOR OF PUBLIC WORKS - DATE

CONTRACT NO. 677-S  
PROJECT NO. S4-6071

LOCATION MAP

ELECTION DISTRICT  
GUILFORD NO. 6

DRAWING NO. 1 OF 7 SCALE 1"=200'

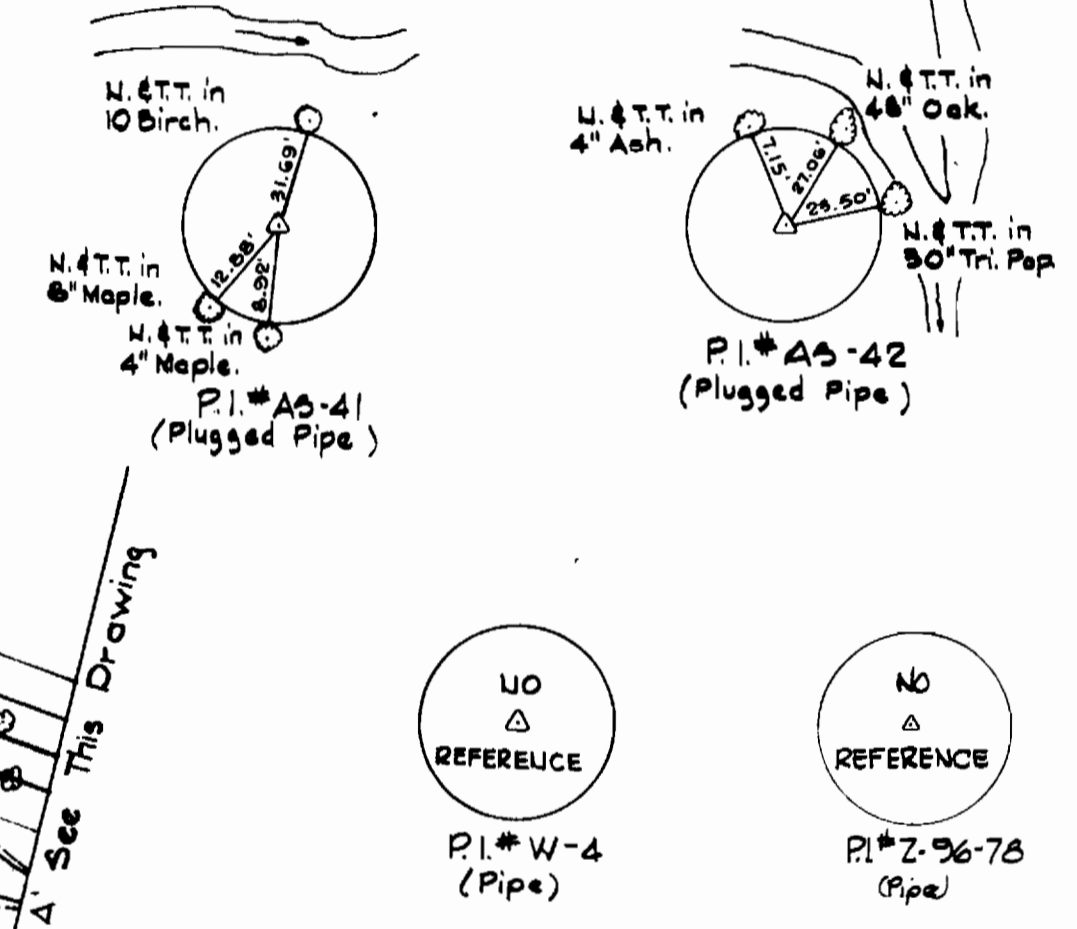
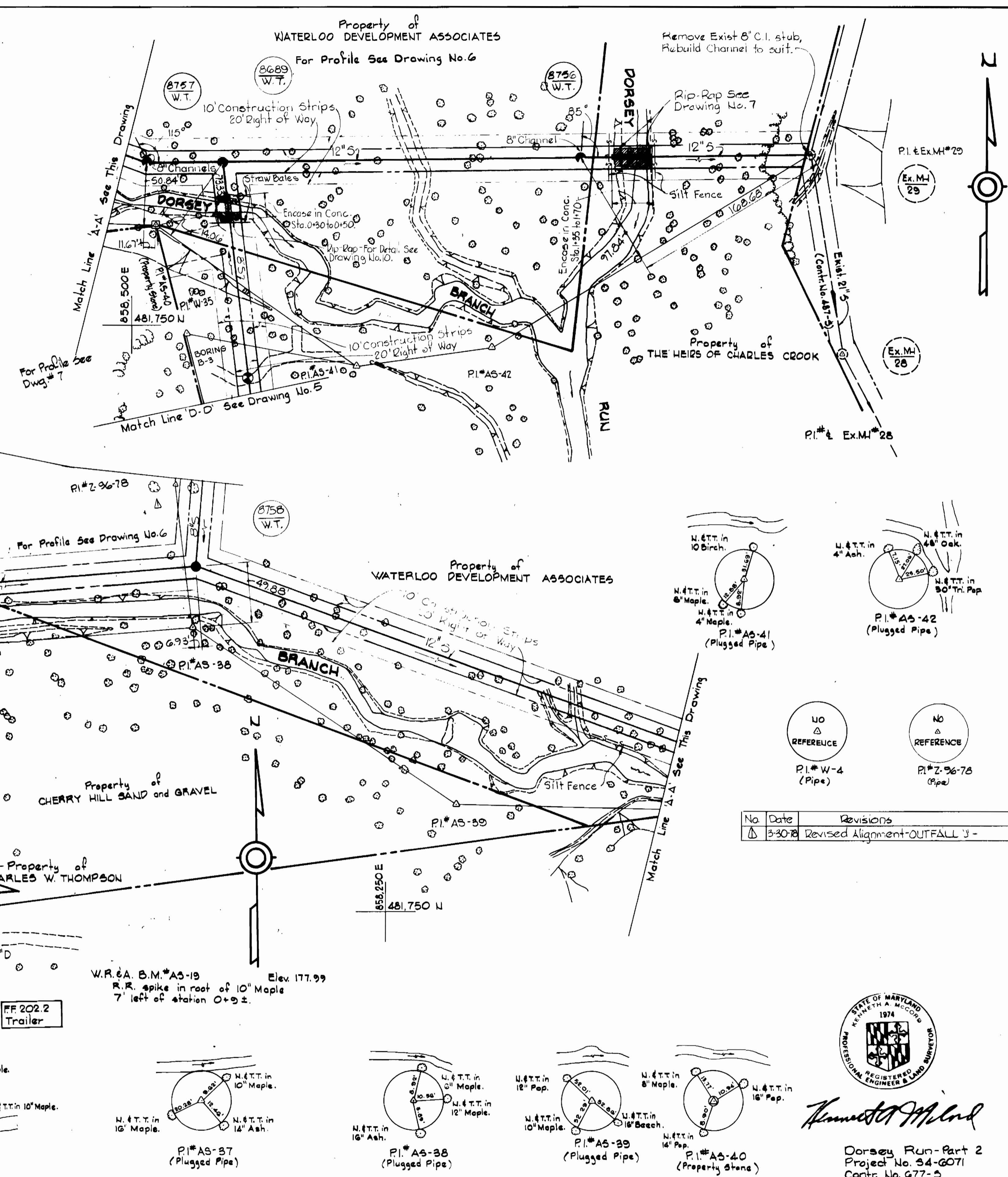


*Kenneth A. McLeod*

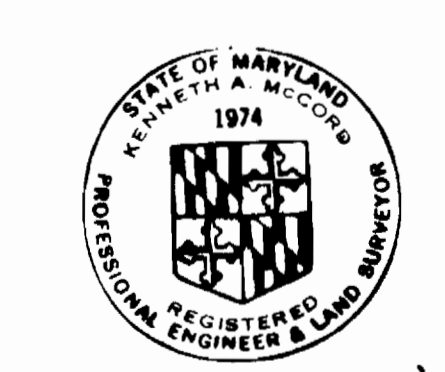
Dorsey Run - Part 2  
Project No. S4-6071  
Contr. No. 677-S

**GENERAL NOTES**

- APPROXIMATE LOCATION OF EXISTING MAINS ARE SHOWN. THE CONTRACTOR SHALL TAKE ALL NECESSARY PRECAUTIONS TO PROTECT EXISTING MAINS AND SERVICES AND MAINTAIN UNINTERRUPTED SUPPLY. ANY DAMAGE INCURRED SHALL BE REPAIRED IMMEDIATELY.
- ALL PIPE ELEVATIONS SHOWN ARE INVERT ELEVATIONS.
- THE CONTRACTOR SHALL LOCATE EXISTING UTILITIES A MINIMUM OF TWO WEEKS IN ADVANCE OF CONSTRUCTION OPERATIONS IN VICINITY OF UTILITIES.
- THE CONTRACTOR SHALL NOTIFY THE FOLLOWING UTILITIES OR AGENCIES AT LEAST FIVE DAYS BEFORE STARTING WORK SHOWN ON THESE PLANS:
  - BALTIMORE GAS AND ELECTRIC COMPANY-UNDERGROUND ELECTRIC DISTRIBUTION ENGINEERING DAMAGE CONTROL - 234-5691
  - UNDERGROUND GAS DISTRIBUTION ENGINEERING 234-5621
  - CHESAPEAKE AND POTOMAC TELEPHONE COMPANY 393-3648.
  - MISS UTILITY - 1 - 559-0100, BUREAU OF UTILITIES 792-2366
- FOR DETAILS NOT SHOWN ON THE DRAWINGS, USE HOWARD COUNTY STANDARDS.
- ALL HORIZONTAL AND VERTICAL CONTROLS ARE BASED ON MARYLAND STATE DATUM.
- CLEAR ALL UTILITIES BY A MINIMUM OF 6", CLEAR ALL POLES BY 2'-0" OR TUNNEL AS REQUIRED.
- FOR MATERIAL AND CONSTRUCTION REQUIREMENTS, USE HOWARD COUNTY STANDARD SPECIFICATIONS.
- ALL SEWER MAINS SHALL BE C.S.P.X., V.C.P.X., A.C.P. CLASS 2400 OR PVC UNLESS OTHERWISE NOTED.
- ALL MANHOLES SHALL BE 4'-0" INSIDE DIAMETER.
- THE CONTRACTOR SHALL PROVIDE A JOINT IN ALL SEWER MAINS WITHIN 2'-0" OF EXTERIOR MANHOLE WALLS.
- TREES ARE TO BE PROTECTED FROM DAMAGE TO MAXIMUM EXTENT. TREES LOCATED WITHIN THE CONSTRUCTION STRIP ARE NOT TO BE REMOVED OR DAMAGED BY THE CONTRACTOR.
- MANHOLES SHOWN WITH 12" WALLS ARE BRICK MANHOLES ONLY.
- MANHOLES DESIGNED W.T. IN PLAN AND PROFILE SHALL HAVE WATERTIGHT FRAME AND COVERS.



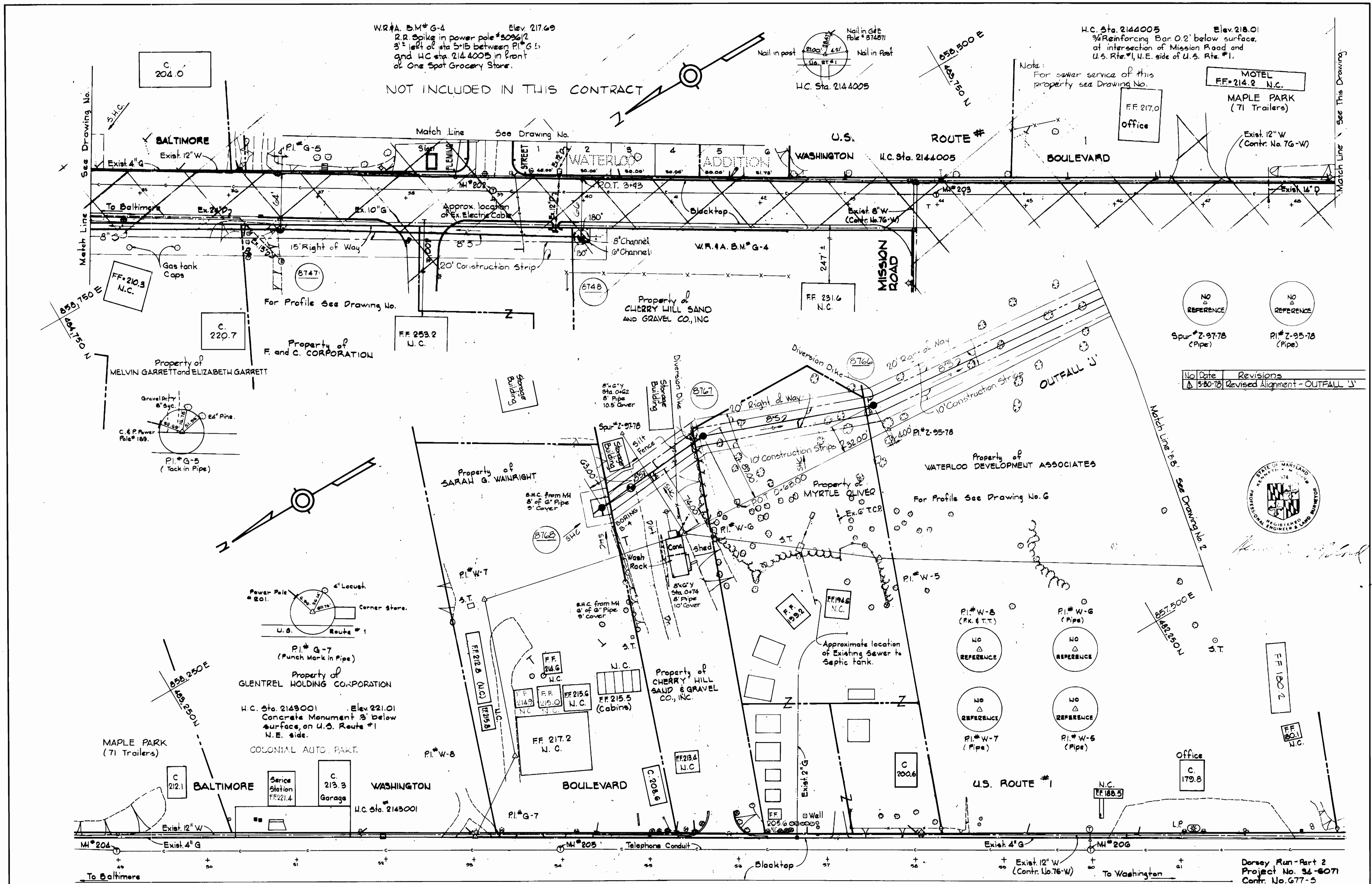
No	Date	Revisions
1	3-30-78	Revised Alignment-OUTFALL 'J'



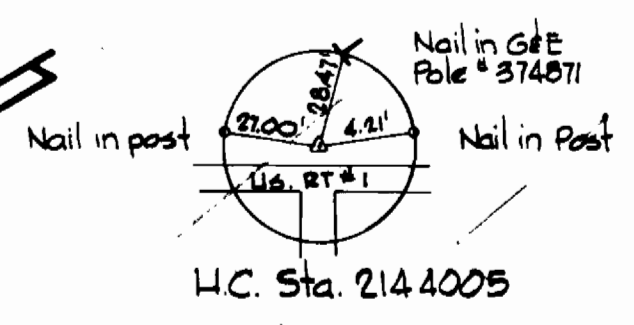
*Kenneth A. Moore*

Dorsey Run-Part 2  
Project No. 34-6071  
Contr. No. 677-5

WHITMAN, REQUARDT & ASSOCIATES ENGINEERS 2315 ST. PAUL ST. BALTIMORE, MARYLAND	DEPARTMENT OF PUBLIC WORKS HOWARD COUNTY, MARYLAND Director of Public Works - DATE W.O. Moore 3-11-77 CHIEF-BUREAU OF ENGINEERING - DATE	CONTRACT NO. 677-S PROJECT NO. S4-6071	PLAN OF SEWER MAINS	ELECTION DISTRICT GUILFORD NO. 6	DRAWING NO. 2 OF 7	SCALE 1" = 50'	451-97 451-98 451-99 452-00
							AS-BUILT NOV 1 8 1978 FB# 5742, 5789 & 6125



W.R.#A. B.M.\*G-4 Elev. 217.69  
 R.R. Spike in power pole #5096/2  
 3' left of sta 5+15 between P.I.\*G-5  
 and H.C. Sta. 2144005 in front  
 of One Spot Grocery Store.



H.C. Sta. 2144005 Elev. 218.01  
 3/4\"/>

NOT INCLUDED IN THIS CONTRACT

MOTEL  
 FF=214.2 N.C.  
 MAPLE PARK  
 (71 Trailers)  
 Exist. 12\"/>

NO REFERENCE  
 Spur #Z-97-78 (Pipe)  
 NO REFERENCE  
 P.I.\*Z-95-78 (Pipe)

No.	Date	Revisions
1	5-30-78	Revised Alignment - OUTFALL 'J'



WHITMAN, REQUARDT & ASSOCIATES  
 ENGINEERS  
 2315 ST. PAUL ST.  
 BALTIMORE, MARYLAND

DEPARTMENT OF PUBLIC WORKS  
 HOWARD COUNTY, MARYLAND  
 3-11-77  
 DIRECTOR OF PUBLIC WORKS - DATE

CONTRACT NO. 677-S  
 PROJECT NO. S4-6071

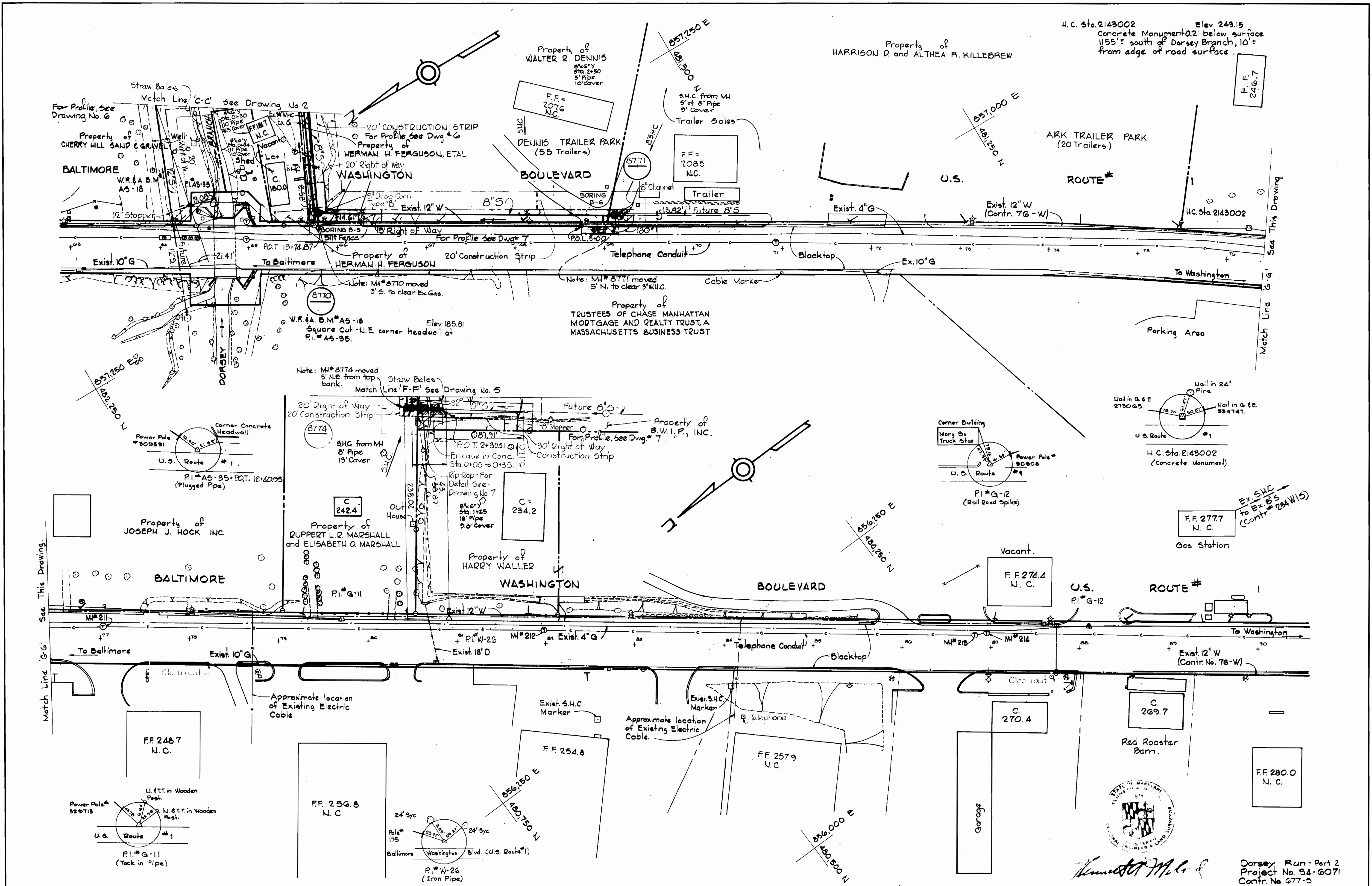
PLAN OF  
 SEWER MAINS

ELECTION DISTRICT  
 GUILFORD NO. 6

DRAWING NO. 3 OF 7  
 SCALE 1" = 50'

W.O. 6840-2

AS-BUILT NOV 18 1983  
 F.D.# 8152, 8156, 8159, 4512, 5769, 5742 & 6425



WHITMAN, REQUARD & ASSOCIATES  
 ENGINEERS  
 2315 ST. PAUL ST.  
 BALTIMORE, MARYLAND

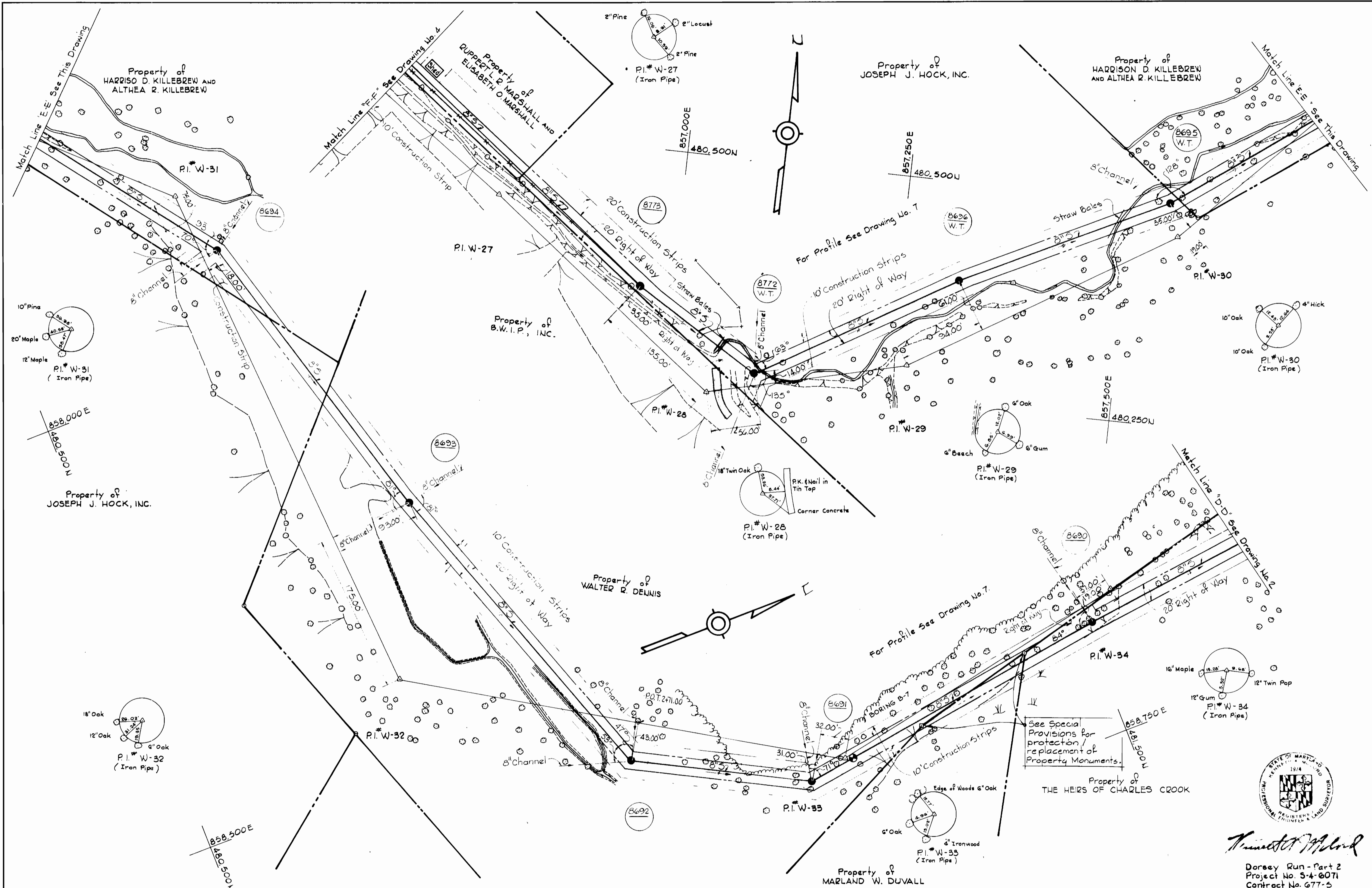
DEPARTMENT OF PUBLIC WORKS  
 HOWARD COUNTY, MARYLAND  
 3-11-77  
 W. O. Liberty 2-10-77  
 DIRECTOR OF PUBLIC WORKS - DATE CHIEF BUREAU OF ENGINEERING - DATE

CONTRACT NO. 677-S  
 PROJECT NO. 34-6071

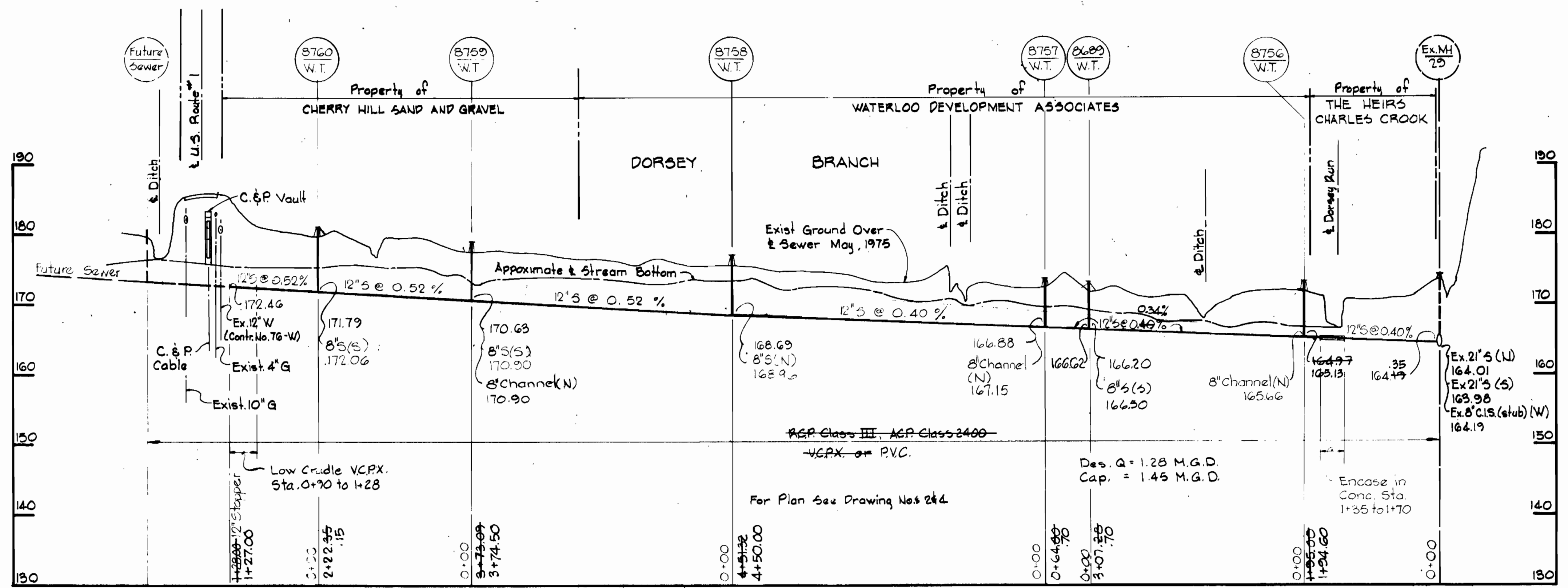
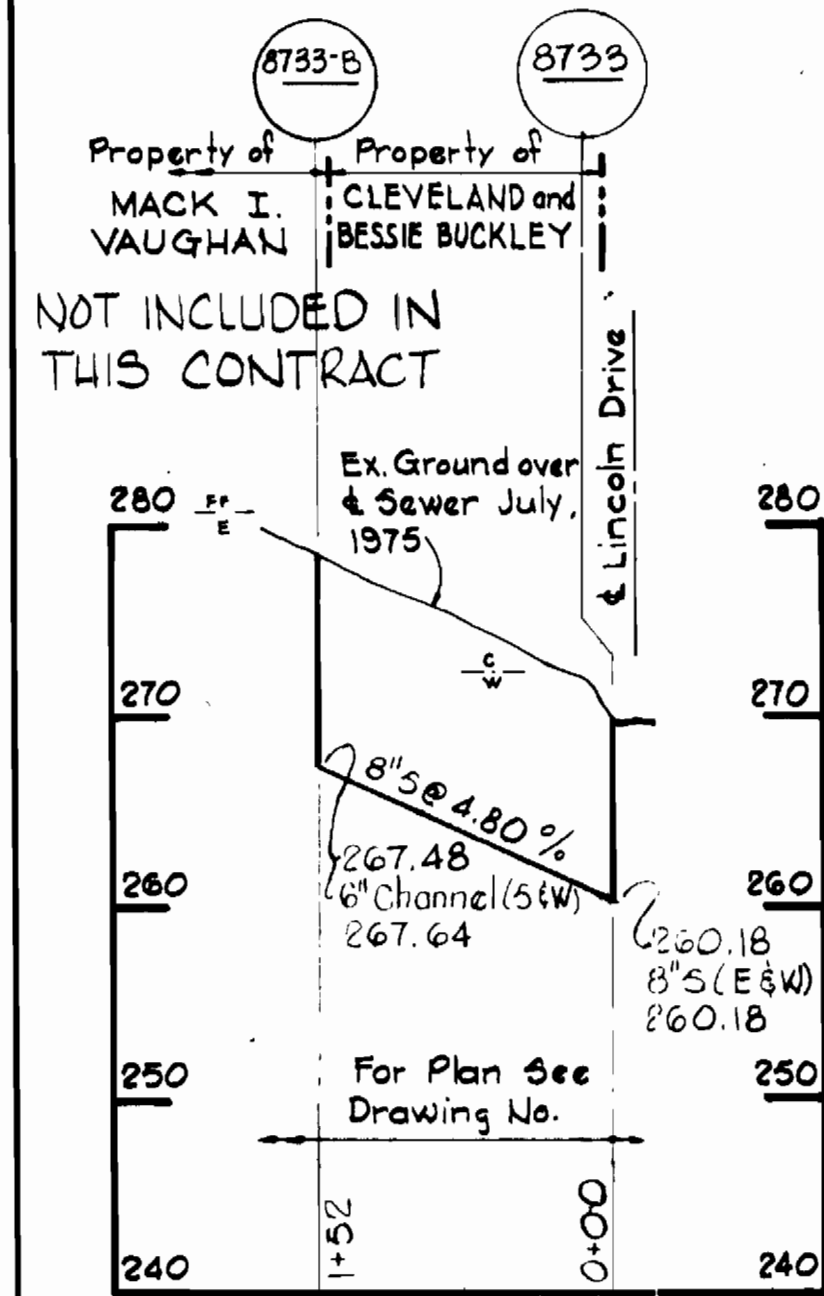
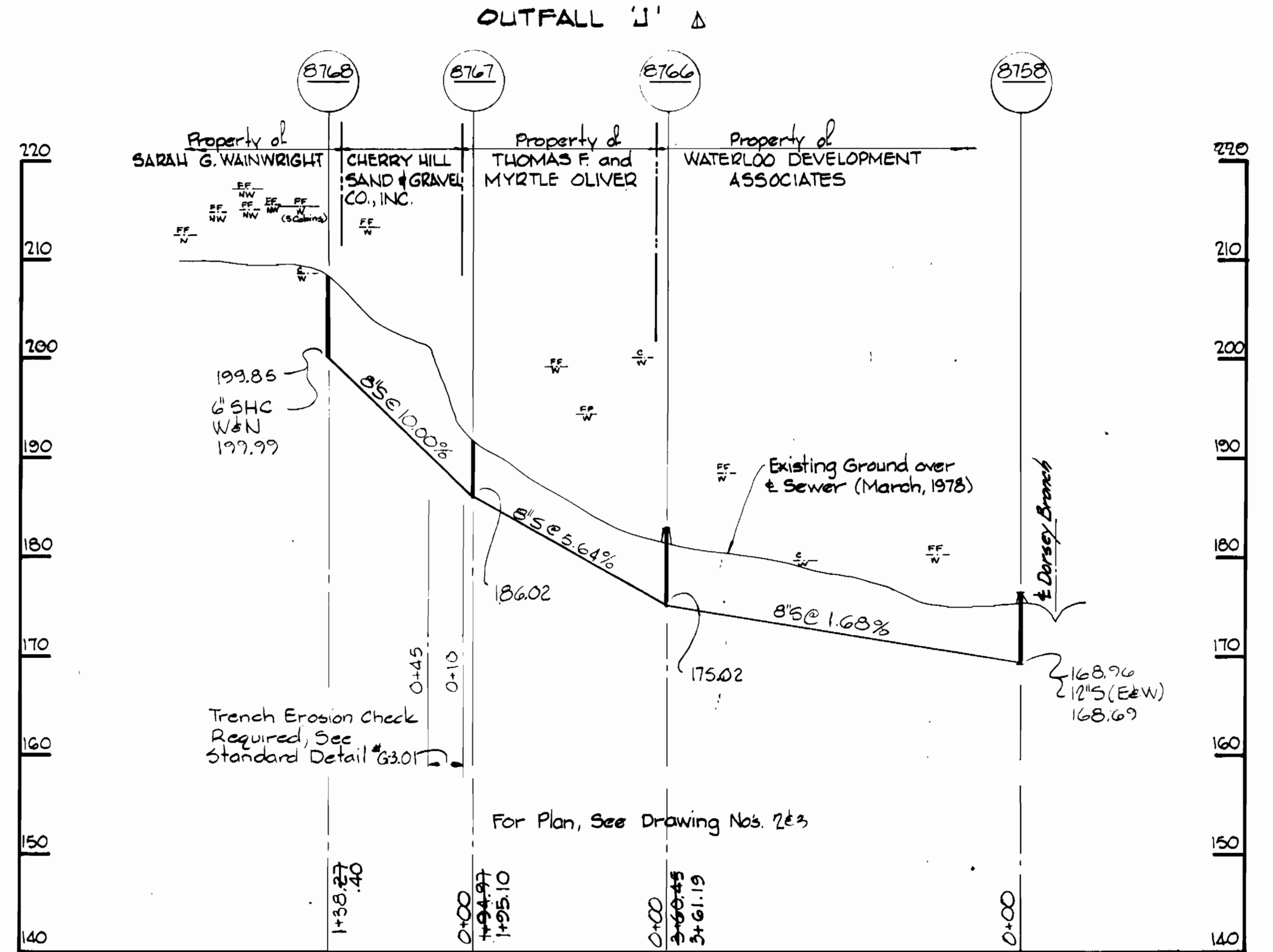
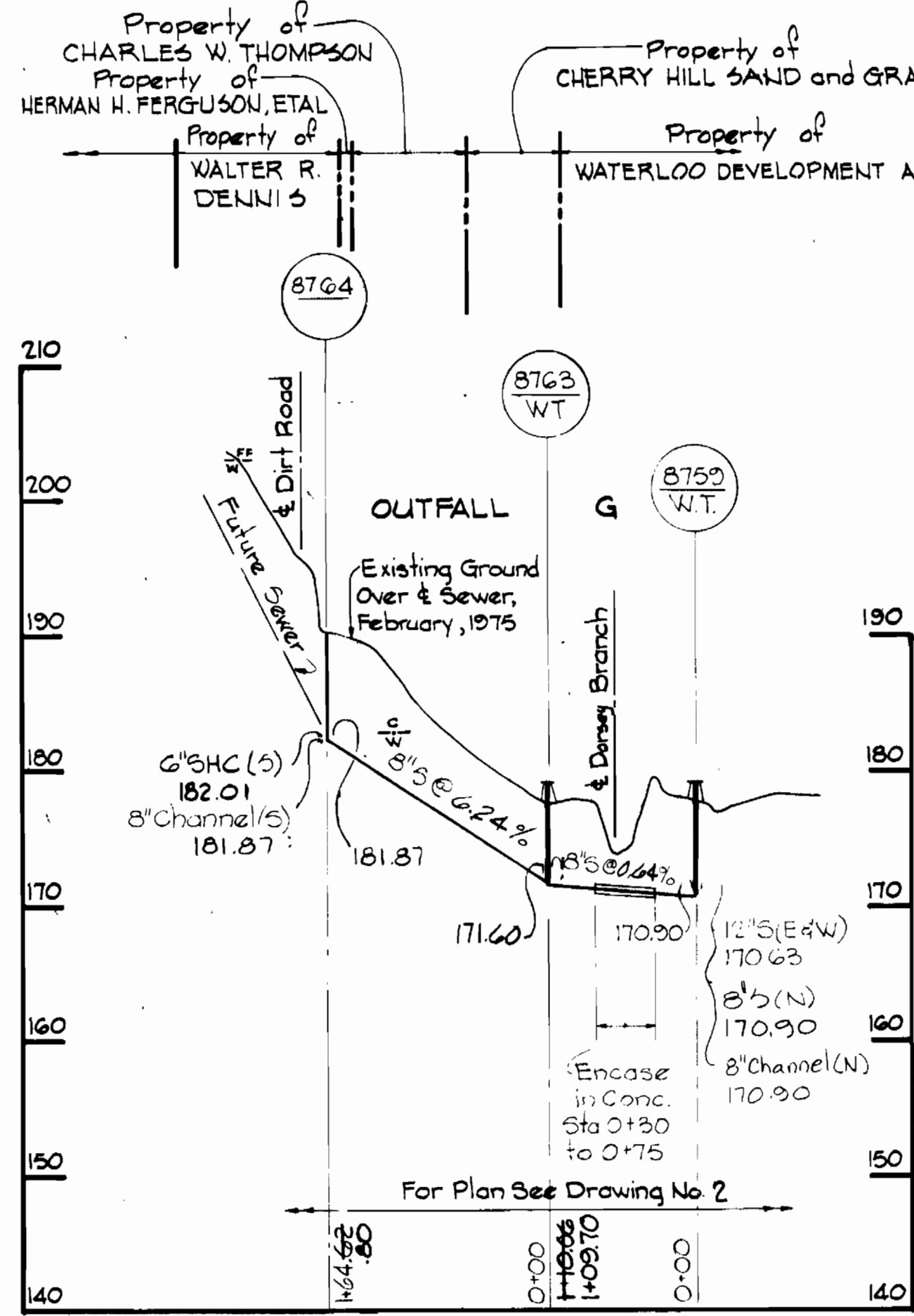
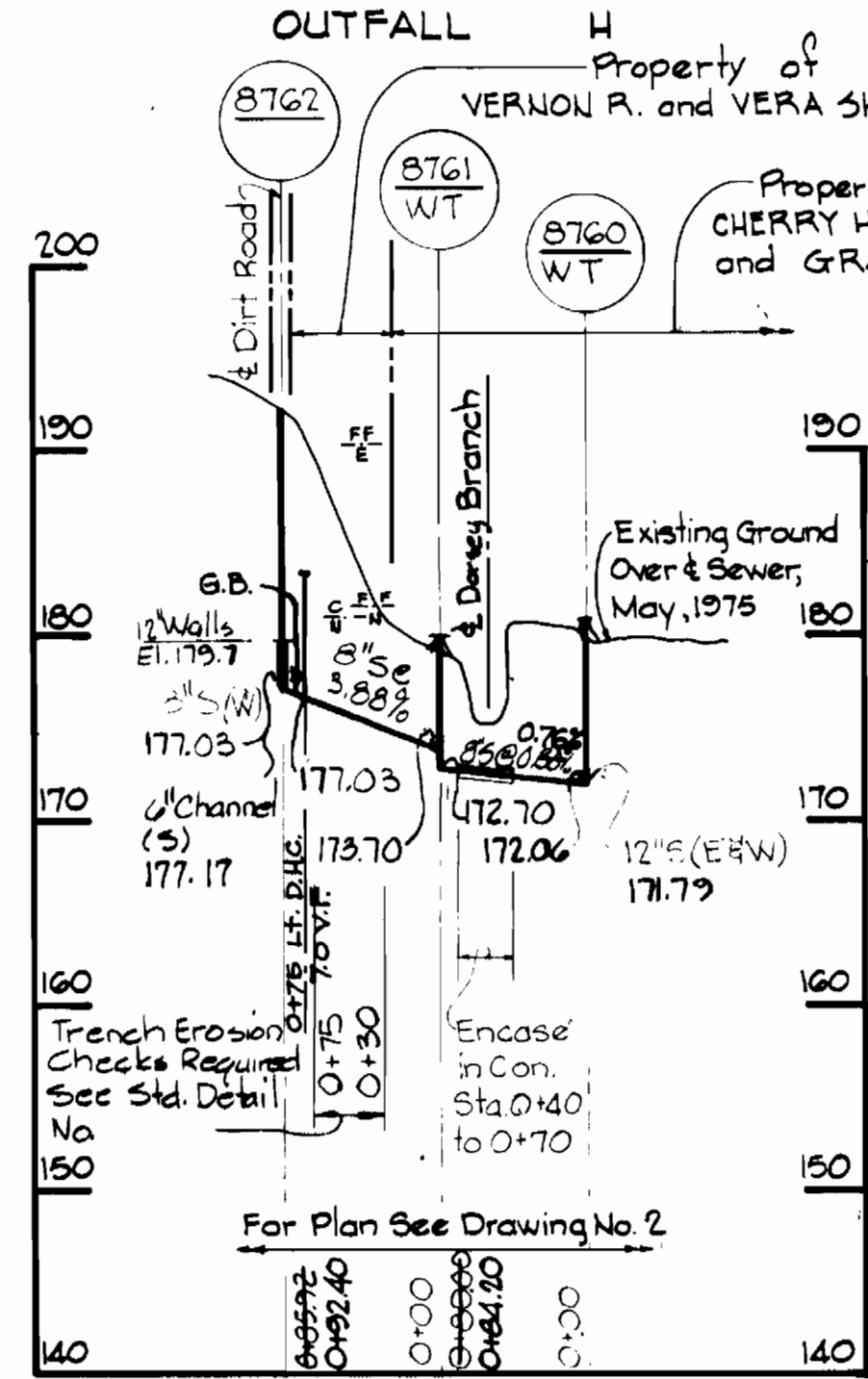
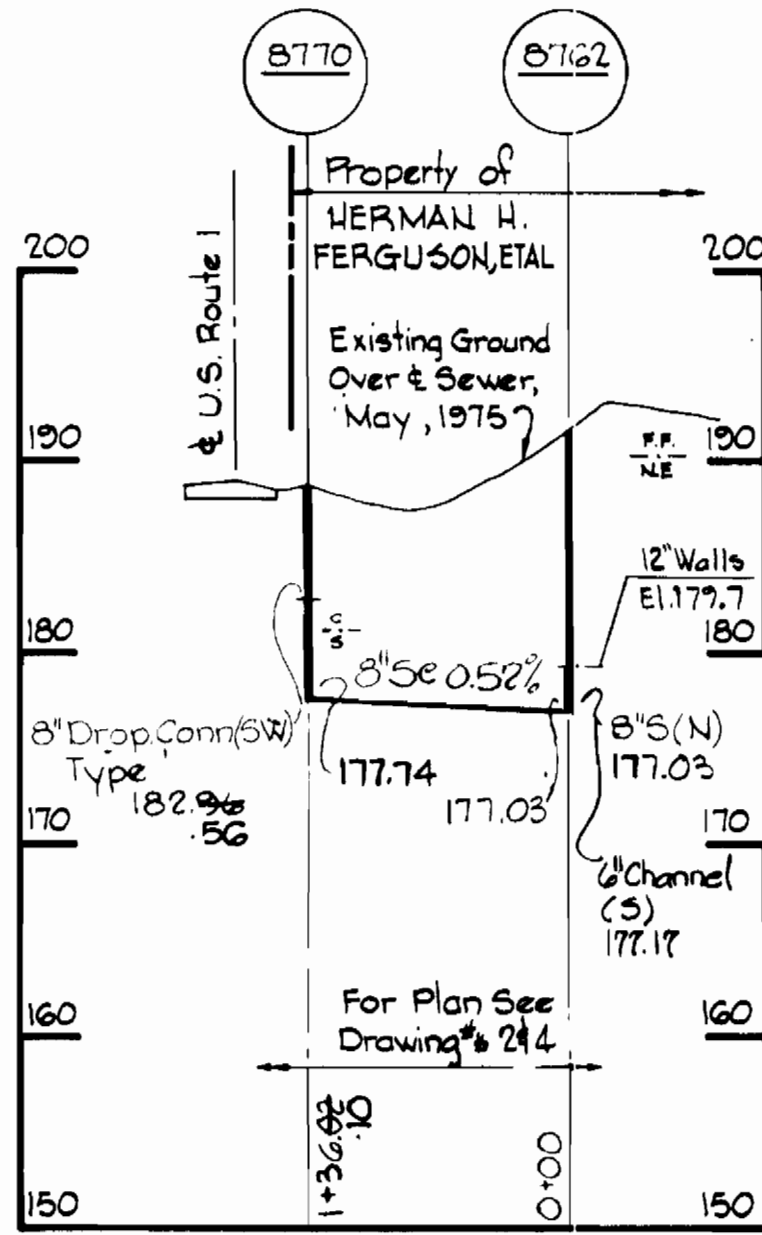
PLAN OF  
 SEWER MAINS

ELECTION DISTRICT  
 GUILFORD NO. 6

DRAWING NO. 4 OF 7 SCALE 1" = 50'



<p>WHITMAN, REQUARDT &amp; ASSOCIATES ENGINEERS 2315 ST. PAUL ST. BALTIMORE, MARYLAND</p>	<p>DEPARTMENT OF PUBLIC WORKS HOWARD COUNTY, MARYLAND <i>M. J. [Signature]</i> 3-11-77 DIRECTOR OF PUBLIC WORKS - DATE</p> <p><i>W. O. [Signature]</i> 3-10-77 CHIEF-BUREAU OF ENGINEERING - DATE</p>	<p>CONTRACT NO. 677-S PROJECT NO. S4-6071</p>	<p>PLAN OF SEWER MANS</p>	<p>ELECTION DISTRICT GUILFORD NO. 6</p>	<p>DRAWING NO. 5 OF 7 SCALE 1" = 50'</p>
---	---	---	-------------------------------	---	--



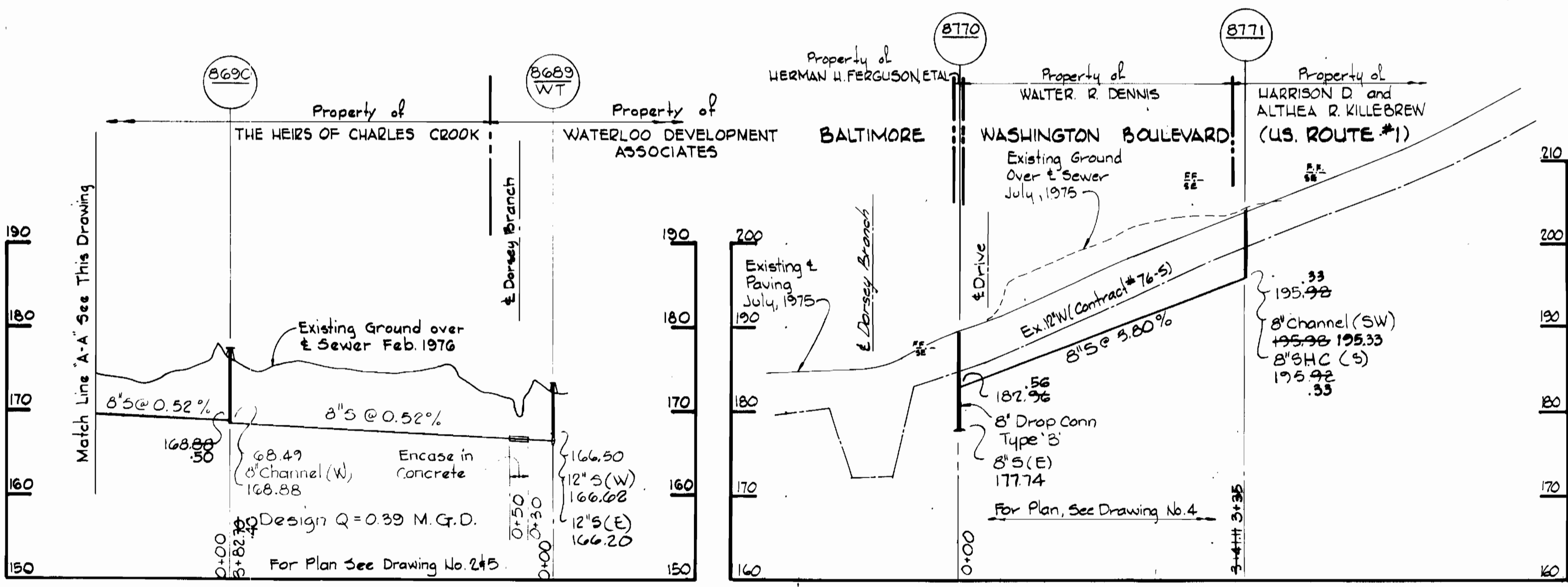
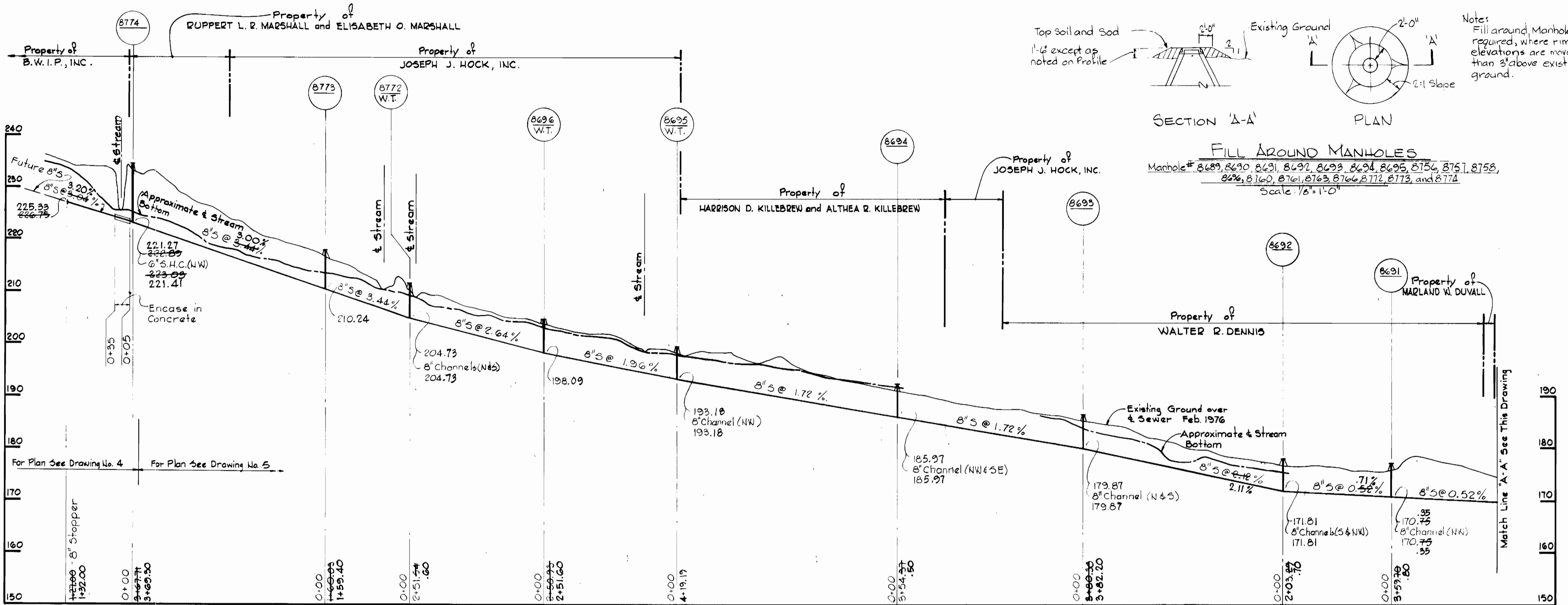
330-18	Revised Alignment	OUTFALL 'J'
No.	Date	Revision

Dorsey Run - Part 2  
Project No. 54-6071  
Contr. No. G77-5

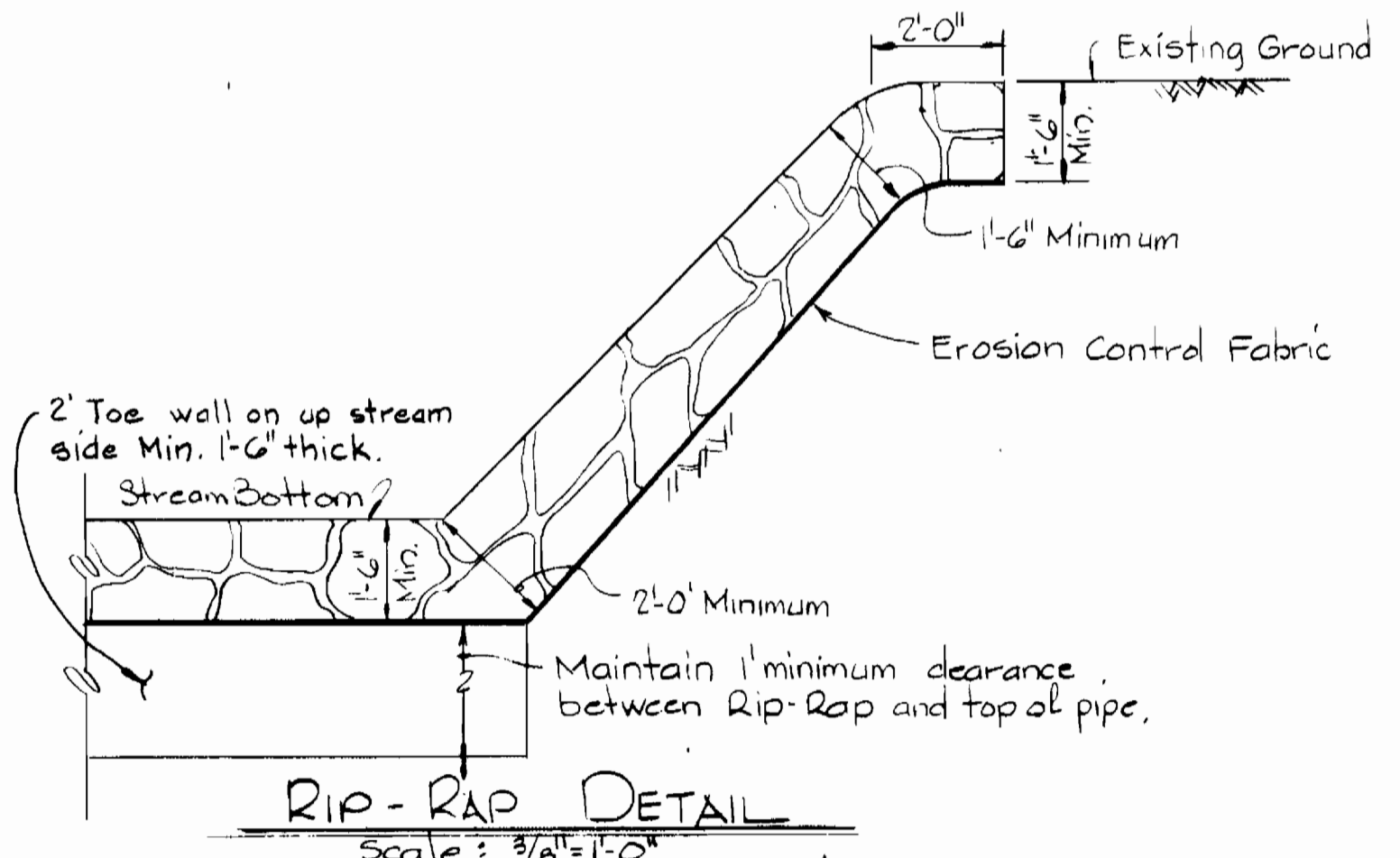
<b>WHITMAN, REQUARDT &amp; ASSOCIATES</b> ENGINEERS 2315 ST. PAUL ST. BALTIMORE, MARYLAND	<b>DEPARTMENT OF PUBLIC WORKS</b> HOWARD COUNTY, MARYLAND <i>D. J. Reed</i> 3-11-77 DIRECTOR OF PUBLIC WORKS - DATE	<b>CONTRACT NO. 677-S</b> <b>PROJECT NO. 54-6071</b> <i>W. O. Falbert</i> 3-10-77 CHIEF-BUREAU OF ENGINEERING - DATE	<b>PROFILES OF SEWER MANS</b>	<b>ELECTION DISTRICT GUILFORD NO. 6</b>	<b>DRAWING NO. 6 OF 7</b>	<b>SCALE H:1"=100' V:1"=10'</b>
--	--	---	-------------------------------	---	---------------------------	---------------------------------

W. O. 6840-2

**AS-BUILT** NOV 18 1983

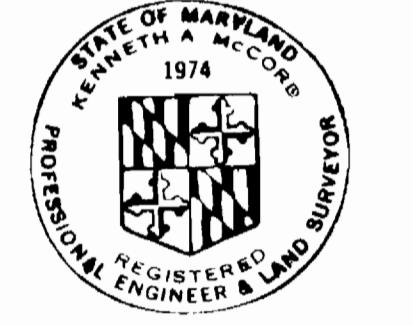


- Notes:
1. Cost of Rip-Rap shall be included in unit Price Bid for Constructing Sewer Mains.
  2. Rip-Rap shall be placed 6" minimum each side of sewer as shown.
  3. Erosion Control Fabric shall be Poly Filter-X as manufacture by Carriage Mills, Inc., Erosion Control Division 124 W 66TH Street Cincinnati, Ohio; Laurel Erosion Control Cloth as manufacture by Laurel Plastic Inc, Madison, Maine, or approved equal.
  4. Rip-Rap shall consist of dense rocks of random shapes, and sizes, resistant to the action of air and water and suitable for bank protection. All rocks shall weigh a minimum of 150 pounds.
  5. Rip-Rap crossing stream bottom is required at Dorsey Run only.



PROFILES  
Scale: Horizontal - 1"=100'  
Vertical - 1"=10'

RIP-RAP DETAIL  
Scale: 3/8"=1'-0"



Kenneth M. Lind

Dorsey Run-Part 2  
Project No. 54-6071  
Contract No. 677-5

WHITMAN, REQUARDT & ASSOCIATES ENGINEERS 2315 ST. PAUL ST. BALTIMORE, MARYLAND	DEPARTMENT OF PUBLIC WORKS HOWARD COUNTY, MARYLAND 3-11-77 DIRECTOR OF PUBLIC WORKS - DATE	CONTRACT NO. 677-S PROJECT NO. S4-6071 W. O. Albert 3-10-77 CHIEF-BUREAU OF ENGINEERING - DATE	PROFILE AND DETAILS OF SEWER MAINS	ELECTION DISTRICT GUILFORD NO. 6	DRAWING NO. 7 OF 7	SCALE AS SHOWN