

**VICINITY MAP**  
Scale: 1" = 100'

- GENERAL NOTES**
- Approximate locations of existing utilities are shown. The Contractor shall take all necessary precautions to protect the existing utilities and to maintain uninterrupted service. Any damage incurred due to the Contractor's operation shall be repaired immediately at the Contractor's expense.
  - All pipe elevations shown are invert elevations.
  - The Contractor shall locate existing utilities well in advance of construction activities in the vicinity of proposed utilities.
  - For standard details see standards bound in specifications.
  - Clear all utilities by a minimum of 6 inches. Clear all utility poles by 2'-0" minimum or tunnel as required. Any costs incurred to the Contractor for tunneling or bracing poles shall be included in unit price bid for excavation.
  - The Contractor shall notify the following utilities or agencies at least five (5) working days before starting work shown on these plans.  
 C & P Telephone Company - 725-9976  
 Baltimore Gas & Electric Co. - Underground Electric Distribution Engineering - 234-2691  
 Baltimore Gas & Electric Co. - Underground Gas Distribution Engineering - 559-0100  
 Miss Utility - 800-441-8355
  - Buttress or anchor all water main fittings with concrete. All valves shall be strapped to trees in accordance with standard details.
  - All water mains have a minimum of 3.5' cover unless otherwise noted and shall be C.I.P., D.I.P., or A.C.P. unless otherwise noted.
  - All fire hydrants shall be strapped to the tee and shall be buttressed with concrete in accordance with standard details. Cost of strapping fire hydrants and valves to be included in the unit price bid for furnishing and installing fire hydrants. Seal around the fire hydrant to be compacted in accordance with Section 3-15 of the Standard Specifications.
  - Bury line elevations on fire hydrants shall be set to the elevations shown on the plan.
  - All horizontal controls are based on Maryland State Coordinates.
  - All vertical controls are based on Maryland State Datum.

**BENCH MARKS**

B.M. #1	Elev. 444.74
Bonnet bolt on fire hydrant at E Road Station 3+30 Parsley Drive.	
B.M. #2	Elev. 442.48
E storm drain manhole cover at E Road Station 0+65 Parsley Drive.	

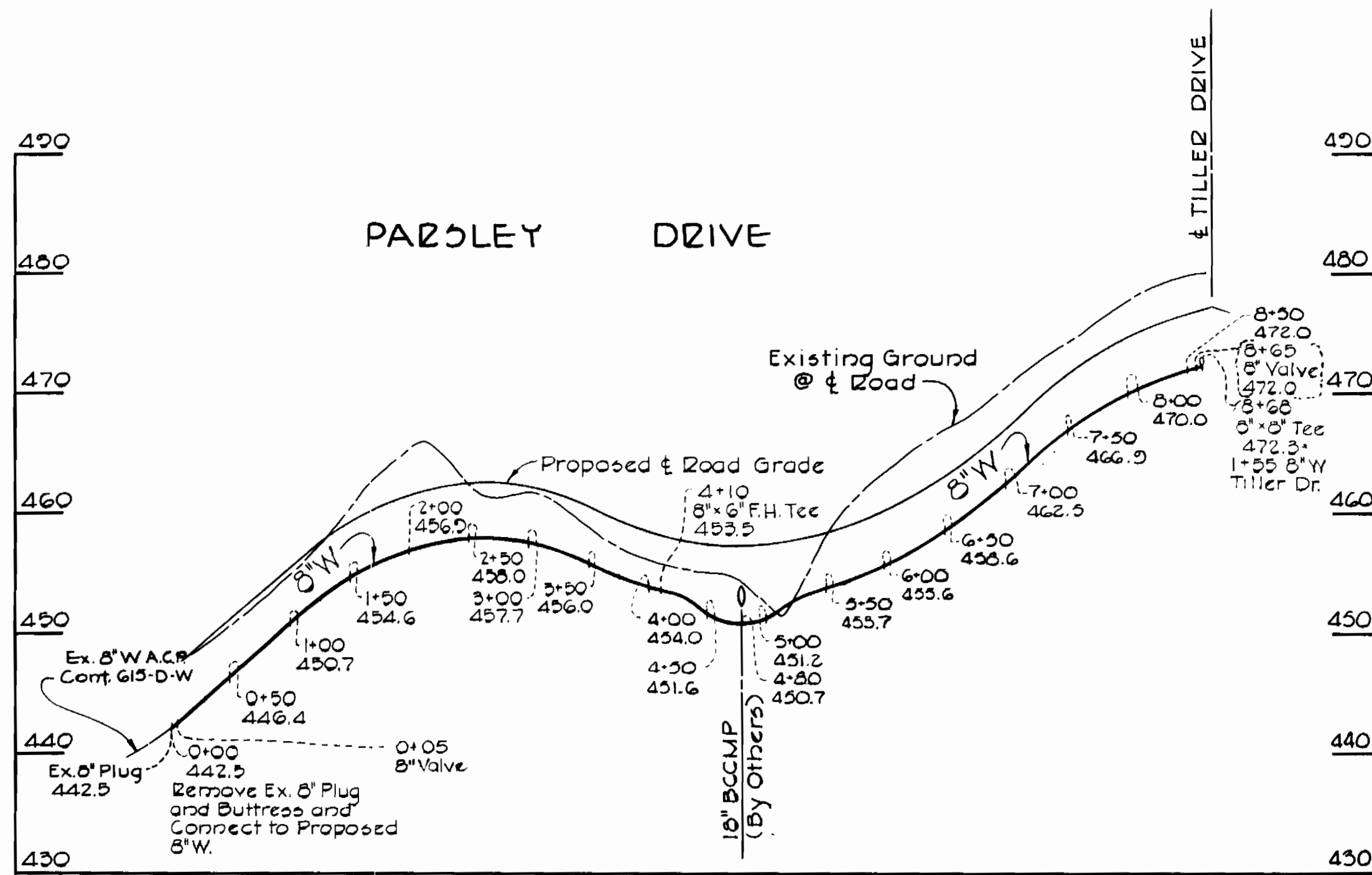
Items	Proposed	As-Built
8" Water A.C.P.	1762 L.F.	1765 L.F.
6" Water A.C.P.	48 L.F.	40 L.F.
Fire Hydrants	4 Each	4 Each

CONTRACT NO. 673-D-4  
MOUNT HEBRON SECTION 15  
WATER MAIN EXTENSION

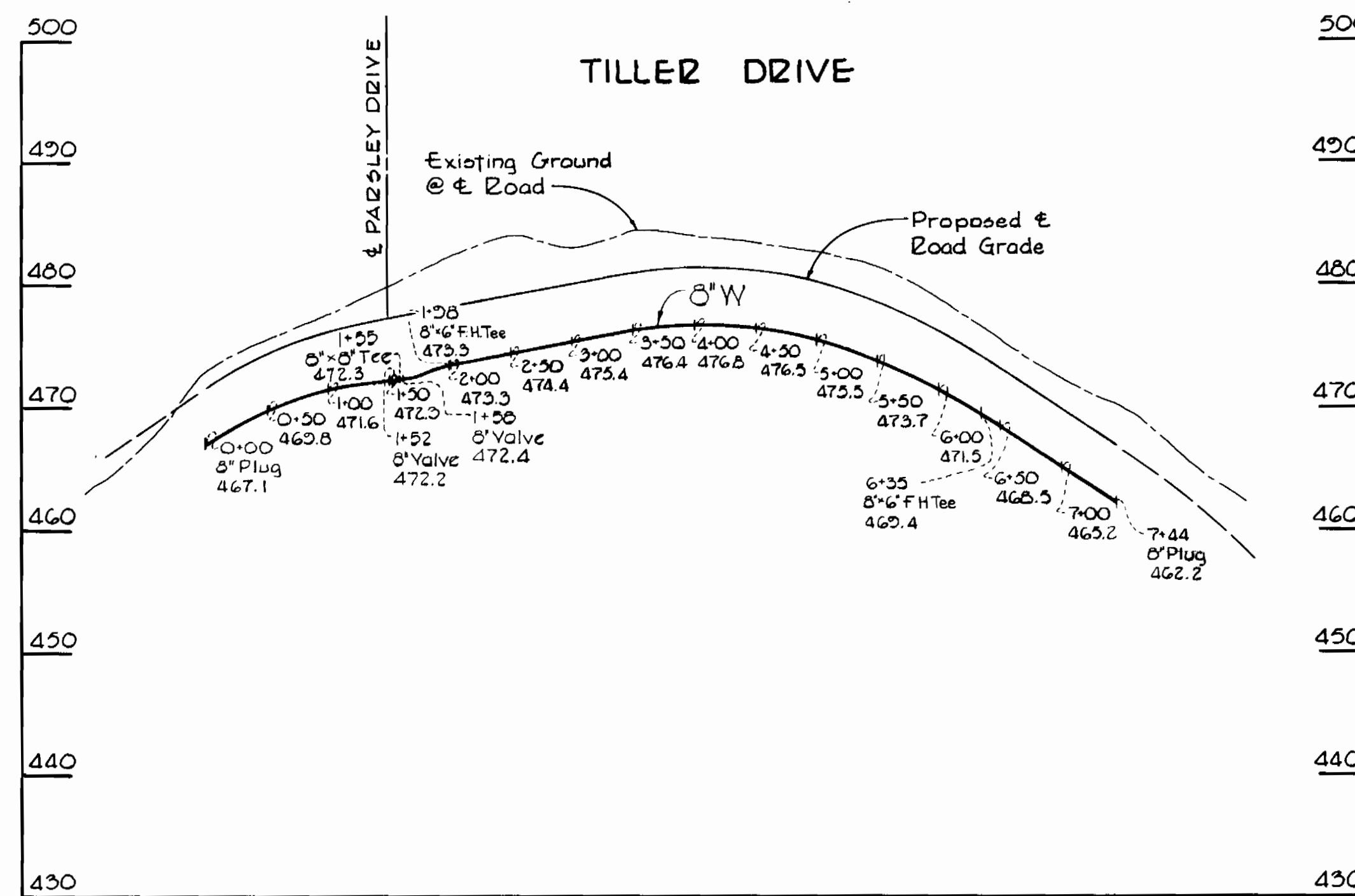


<b>PURDUM &amp; JESCHKE</b> ENGINEERS 1023 N. CALVERT ST. BALTIMORE, MARYLAND	<b>DEPARTMENT OF PUBLIC WORKS</b> HOWARD COUNTY, MARYLAND 3-17-76 DIRECTOR OF PUBLIC WORKS DATE	CONTRACT NO. <b>873-D-4</b>	<b>PLAN OF</b> <b>WATER MAIN EXTENSION</b>	<b>MOUNT HEBRON SECTION 15</b> <b>ELECTION DISTRICT NO 2</b>	<b>DRAWING</b> NO. <b>1</b>	<b>SCALE</b> <b>AS SHOWN</b>	<b>DESIGNED BY</b> <b>DRAWN BY</b> <b>CHECKED BY</b> <b>TYPED BY</b>
					<b>OF</b> <b>2</b>		

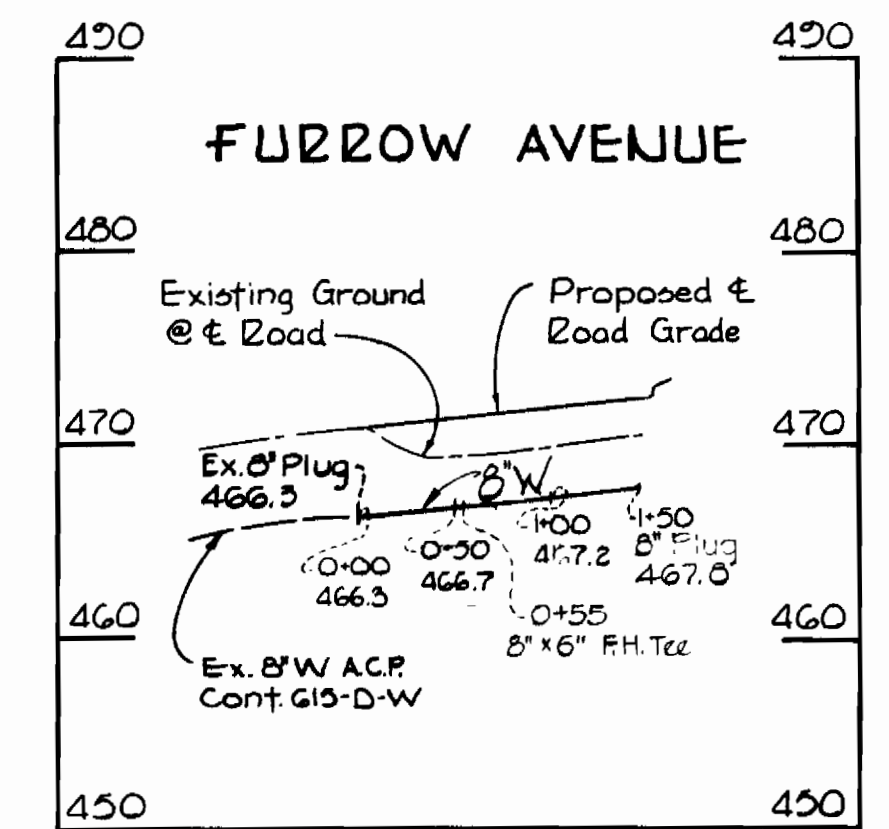
For Plan, see Drawing No. 1



**PROFILE**  
 HORIZ: 1" = 100'  
 VERT: 1" = 10'



**PROFILE**  
 HORIZ: 1" = 100'  
 VERT: 1" = 10'



**PROFILE**  
 HORIZ: 1" = 100'  
 VERT: 1" = 10'



**PURDUM & JESCHKE**  
 ENGINEERS  
 1023 N. CALVERT ST.  
 BALTIMORE, MARYLAND

**DEPARTMENT OF PUBLIC WORKS**  
 HOWARD COUNTY, MARYLAND  
 3-17-76  
 DIRECTOR OF PUBLIC WORKS DATE CHIEF-BUREAU OF ENGINEERING DATE

CONTRACT NO. 673-D-W

PROFILE OF  
 WATER MAIN EXTENSION

MOUNT HEBRON SECTION 15  
 ELECTION DISTRICT NO. 2

DRAWING NO. 2 OF 2	SCALE AS SHOWN	DESIGNED: AEL
		DRAFTED: ARZ
		CHECKED: TAF