

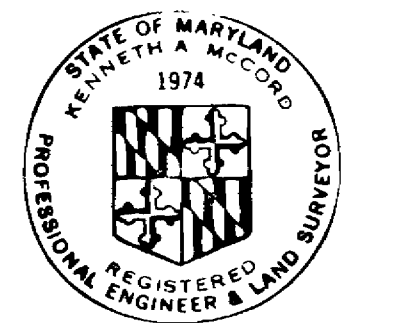
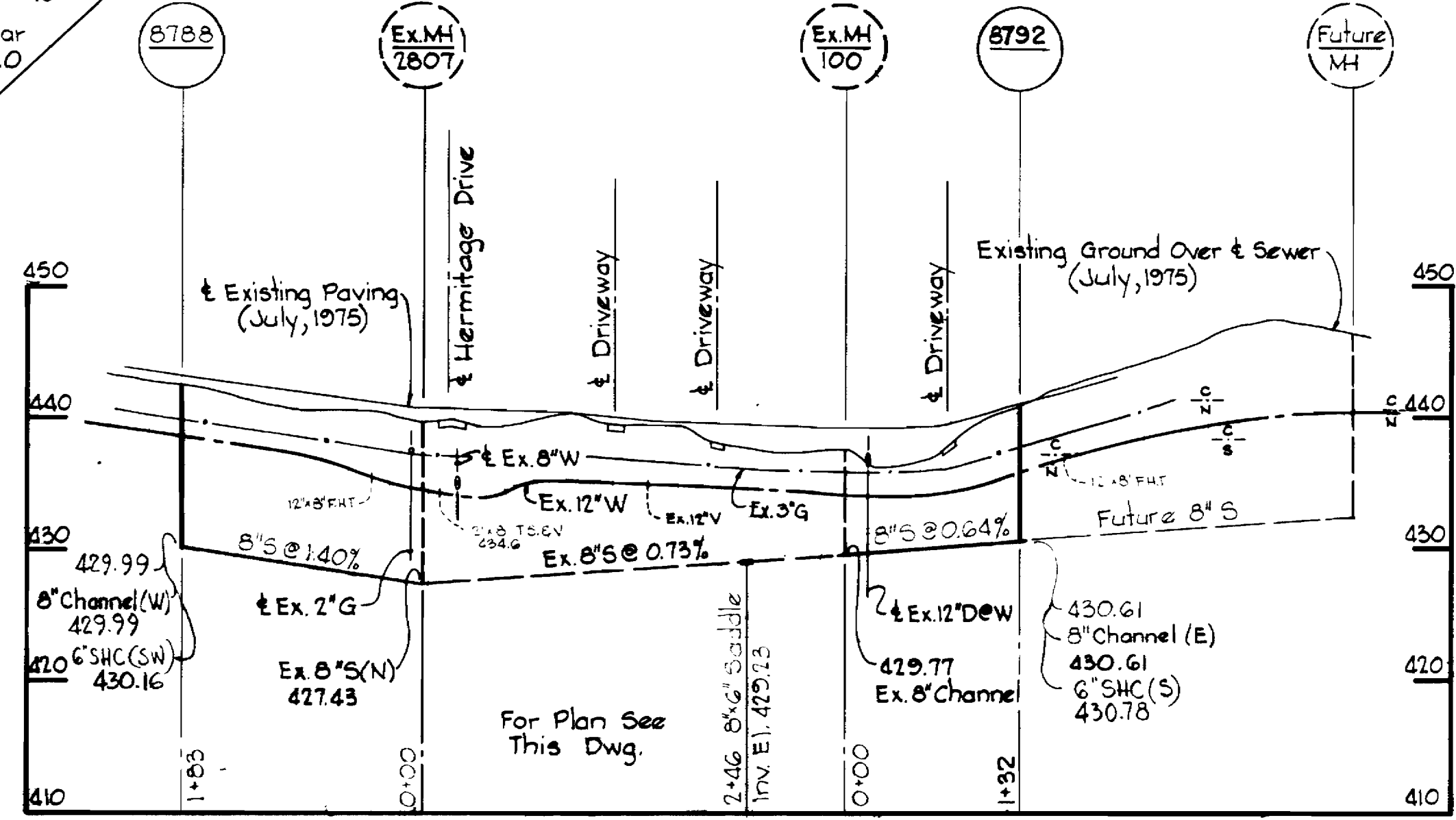
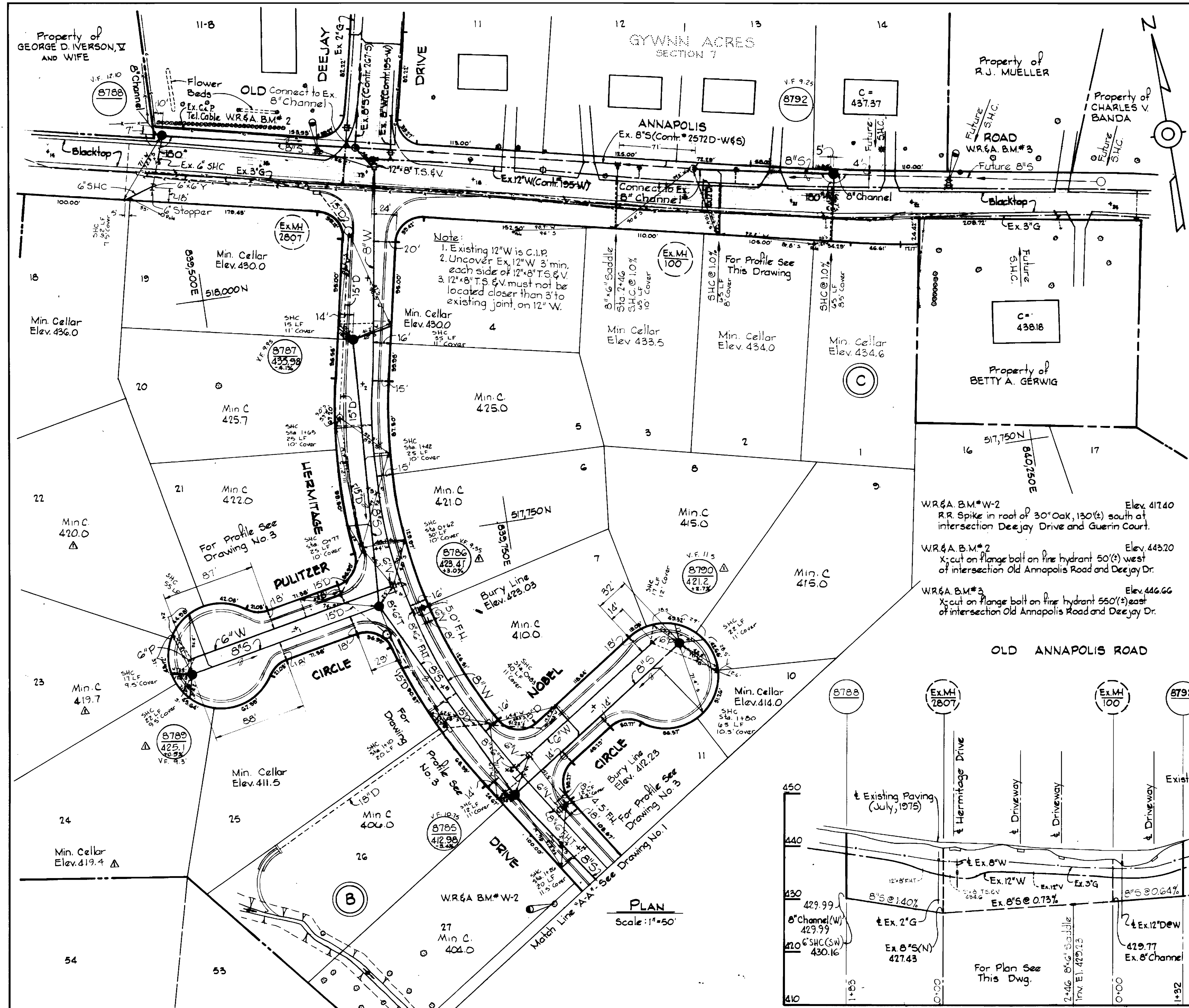
QUANTITIES	
ITEM	QUANTITY
6" Water	1,680 L.F.
8" Water	1,420 L.F.
8" Sewer	3,030 L.F.
Fire Hydrants	5

No.	Date	Revision
1	4-19-76	Rev. Min. C Elev. Lots 15, 16, 17, 18, 19, 20 + M.H. 8791 Elev. Also F.H. Bury Line Elev. on Cezanne Cir. (Knob's End)
2	2-27-76	Rev. Min. C Elev. Lots 13, 31, 32, 33, 37, 38, 39 (40)

WHITMAN, REQUARDT & ASSOCIATES ENGINEERS 1304 ST. PAUL ST. BALTIMORE, MARYLAND	DEPARTMENT OF PUBLIC WORKS HOWARD COUNTY, MARYLAND Director: <i>W. O. Tilbert</i> 2-9-76 Chief Bureau of Engineering: <i>W. O. Tilbert</i> 2-3-76	CONTRACT NO. 2668D-W85	PLAN OF WATER AND SEWER MAINS	ELECTION DISTRICT ELLICOTT CITY NO. 2	DRAWING NO. 1 OF 3 SCALE AS SHOWN
----------------------------------------------------------------------------------------------------	-------------------------------------------------------------------------------------------------------------------------------------------------------------------	-------------------------------	--------------------------------------	----------------------------------------------	----------------------------------------------------

GENERAL NOTES

1. Approximate location of existing mains are shown. The Contractor shall take all necessary precautions to protect existing mains and services and maintain uninterrupted supply. Any damage incurred shall be repaired immediately.
2. All pipe elevations shown are invert elevations.
3. The Contractor shall locate existing utilities a minimum of two weeks in advance of construction operations in vicinity of utilities.
4. The Contractor shall notify the following utilities or agencies at least five (5) days before starting work shown on these plans.
State Highway Administration - 531-5533
Baltimore Gas and Electric Company
Underground Electric Distribution Engineering - "Damage Control" - 234-5691
Underground Gas Distribution Engineering - 559-0100
Chesapeake and Potomac Telephone Company - 727-9976
5. For all standard details see standards bound in Specifications.
6. All horizontal and vertical controls are based on Maryland State Datum.
7. Clear all utilities by a minimum of 6', clear all poles by a minimum of 2'-0" or tunnel as required.
8. All water mains to have a minimum of 3 1/2' cover.
9. Block all fittings with concrete, see standards bound in Specifications.
10. Payment for strapping fire hydrants and valves will be included in unit price bid for furnishing and laying water mains.
11. All fire hydrants shall be strapped and buttressed in accordance with standard details. Soil around the fire hydrant shall be compacted in accordance with Section 5-15 of the Standard Specifications.
12. Bury line elevations on fire hydrants shall be set to elevations shown on drawings.
13. All W.H.C.'s to be 3/4" diameter unless otherwise noted.
14. Water services shall be for inside meter settings.
15. All manholes to be 4'-0" inside diameter.
16. The Contractor shall provide a joint in all sewer mains within 2'-0" of exterior manhole walls.



Kenneth M. Lord

Chateau Valley
Section 1
Contract No. 2668D-W8

No.	Date	Revision
4-12-76		Rev. Elev. M.H. No's 8789, 8790, 8791, 8792, 8793, 8794, 8795, 8796, 8797, 8798, 8799, 8800, 8801, 8802, 8803, 8804, 8805, 8806, 8807, 8808, 8809, 8810, 8811, 8812, 8813, 8814, 8815, 8816, 8817, 8818, 8819, 8820, 8821, 8822, 8823, 8824, 8825, 8826, 8827, 8828, 8829, 8830, 8831, 8832, 8833, 8834, 8835, 8836, 8837, 8838, 8839, 8840, 8841, 8842, 8843, 8844, 8845, 8846, 8847, 8848, 8849, 8850, 8851, 8852, 8853, 8854, 8855, 8856, 8857, 8858, 8859, 8860, 8861, 8862, 8863, 8864, 8865, 8866, 8867, 8868, 8869, 8870, 8871, 8872, 8873, 8874, 8875, 8876, 8877, 8878, 8879, 8880, 8881, 8882, 8883, 8884, 8885, 8886, 8887, 8888, 8889, 8890, 8891, 8892, 8893, 8894, 8895, 8896, 8897, 8898, 8899, 8900

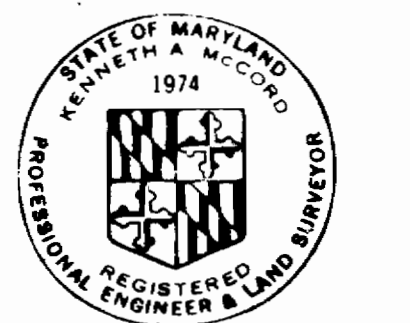
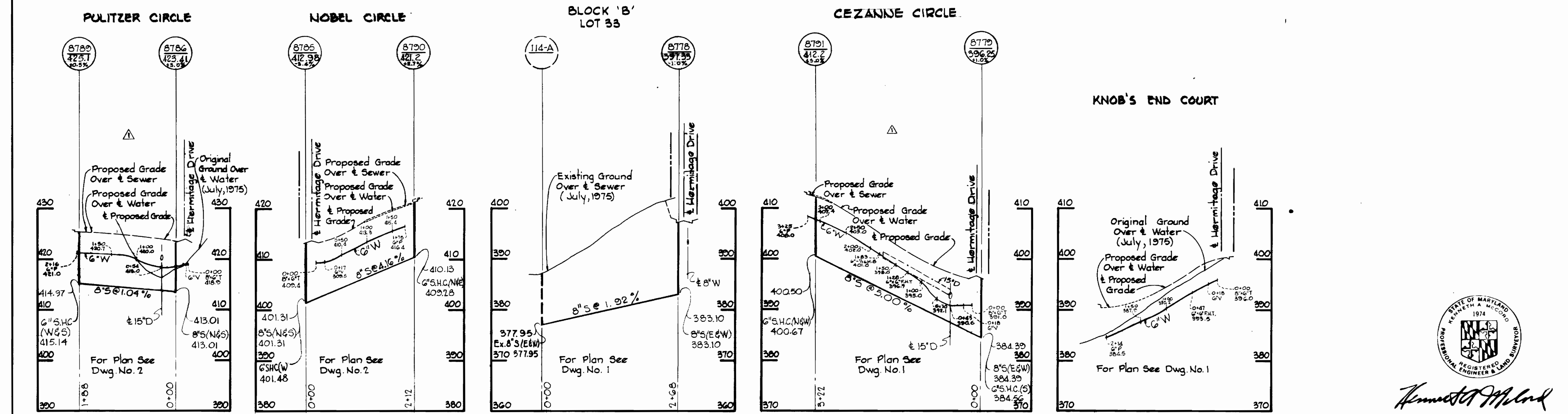
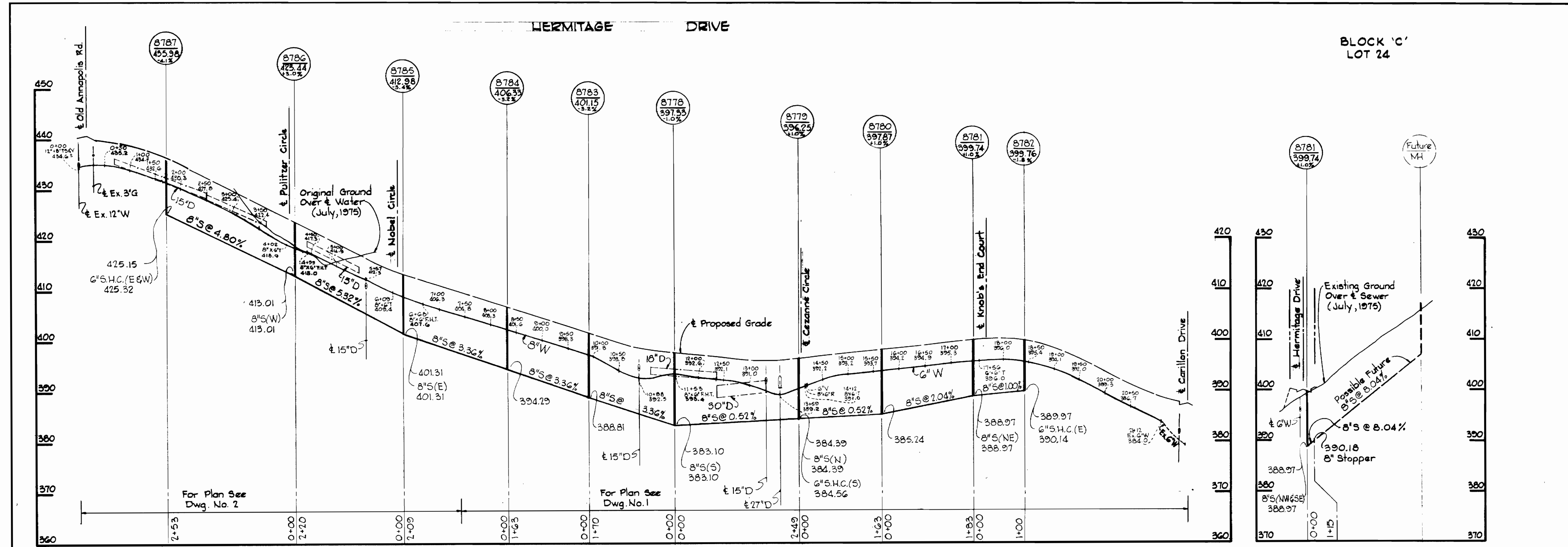
WHITMAN, REQUARDT & ASSOCIATES ENGINEERS 1304 ST. PAUL ST. BALTIMORE, MARYLAND	DEPARTMENT OF PUBLIC WORKS HOWARD COUNTY, MARYLAND 2-9-76 DIRECTOR OF PUBLIC WORKS - DATE	CONTRACT NO. 2668D-W8 W.O. Pulbert 2-3-76 CHIEF BUREAU OF ENGINEERING - DATE	PLAN AND PROFILE OF WATER AND SEWER MAINS	ELECTION ELLICOTT	DISTRICT CITY NO. 2	DRAWING NO. 2 OF 3	SCALE AS SHOWN
						FB# 5519 AS-BUILT 8-12-76	MARCH 29, 1976

W. O. 7051-2

W.S. 668 - 2-12-76

BRUNING 44" x 10" 18392

W.S. 668-WFS/3



Kenneth A. McCord

Chateau Valley
Section 1
Contract No. 2668D-WFS

No.	Date	Revision
1	4-13-76	Rev. Profiles Pulitzer Circle & Cezanne Circle

WHITMAN, REQUARDT & ASSOCIATES
ENGINEERS
1304 ST. PAUL ST.
BALTIMORE, MARYLAND

DEPARTMENT OF PUBLIC WORKS
HOWARD COUNTY, MARYLAND
J. J. [Signature] 2-3-76
DIRECTOR OF PUBLIC WORKS - DATE

W. O. [Signature] 2-3-76
CHIEF BUREAU OF ENGINEERING - DATE

CONTRACT NO. 2668D-WFS

PROFILES OF WATER AND SEWER MAINS

ELECTION DISTRICT
ELLICOTT CITY NO. 2

DRAWING NO. 3 OF 3
SCALE H:1"=100' V:1"=10'