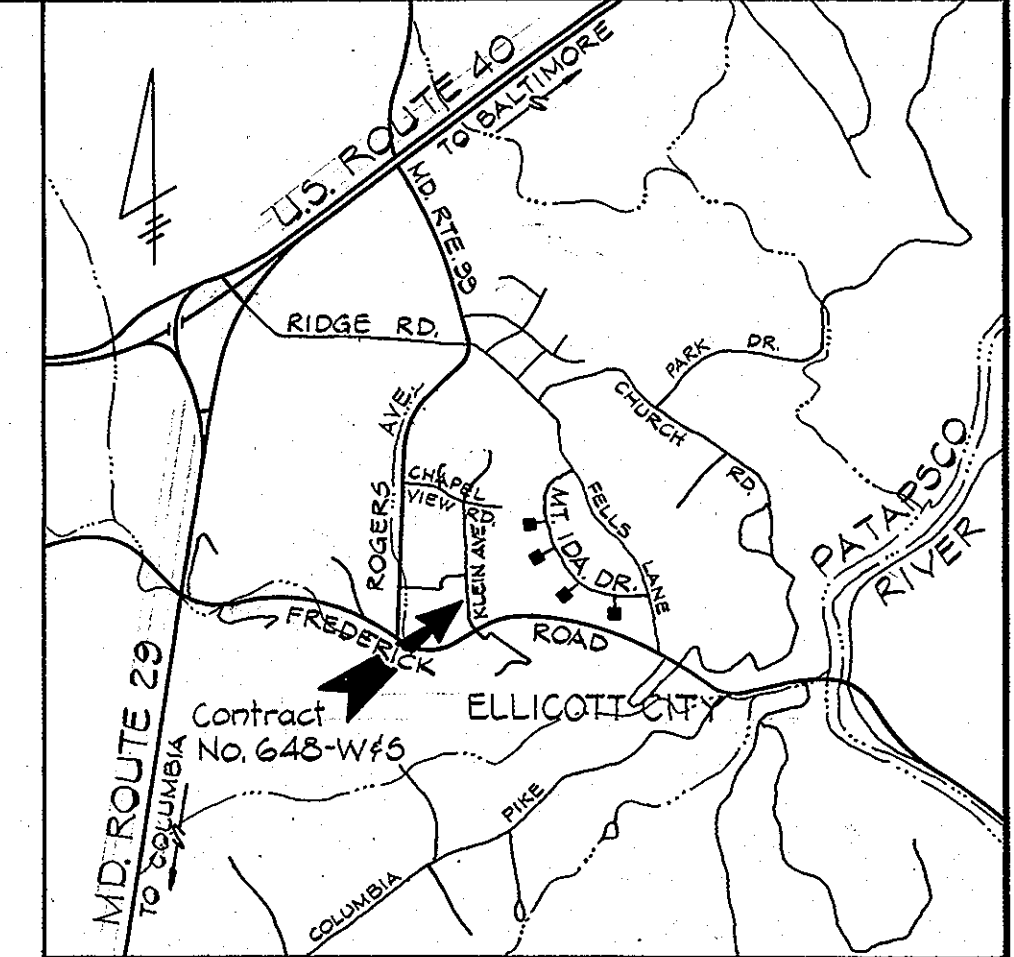
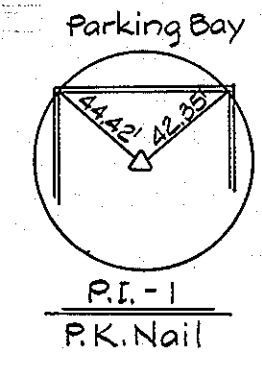


**BENCH MARKS**

- P.F.J. B.M. #2 Elev. 347.49  
Cross-cut at end of curb 24' S.W. of P.I. #2 on Chapel View Road.
- P.F.J. B.M. #3 Elev. 366.20  
Roadside bolt of fire hydrant 150' N.W. of P.I. #3 on Chapel View Road.
- P.F.J. B.M. #6 Elev. 301.37  
R.R. spike in G&E Pole #297242 142' S.E. of P.O.L. 2+88.90 between P.I. #5 and P.I. #3 on Klein Avenue.
- P.F.J. B.M. #8 Elev. 251.67  
R.R. spike in G&E Pole #325740 112' S.E. of P.I. #4 on Klein Avenue.
- P.F.J. B.M. #9 Elev. 244.92  
R.R. spike in G&E Pole #325739 13' S.W. of P.I. #6 on Klein Avenue.



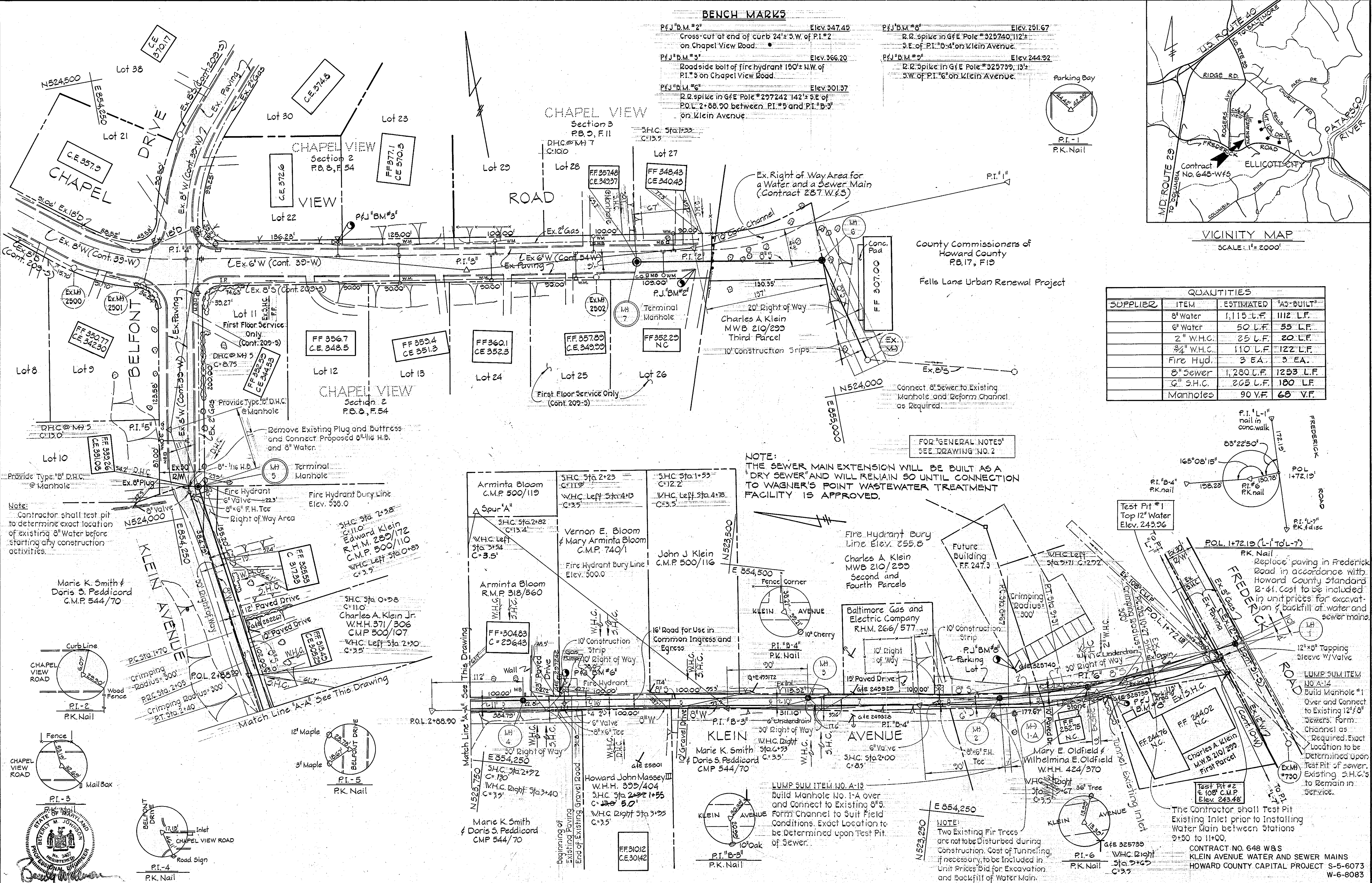
**VICINITY MAP**  
SCALE: 1" = 2000'

County Commissioners of Howard County  
P.B. 17, F.19  
Fells Lane Urban Renewal Project

QUANTITIES			
SUPPLIER	ITEM	ESTIMATED	"AS-BUILT"
	8" Water	1,115 L.F.	1112 L.F.
	8" Water	50 L.F.	55 L.F.
	2" W.H.C.	25 L.F.	20 L.F.
	3/4" W.H.C.	110 L.F.	122 L.F.
	Fire Hyd.	3 EA.	3 EA.
	8" Sewer	1,280 L.F.	1253 L.F.
	6" S.H.C.	205 L.F.	180 L.F.
	Manholes	90 V.F.	68 V.F.

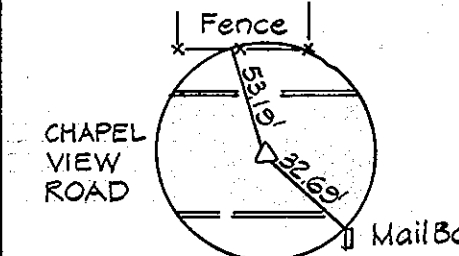
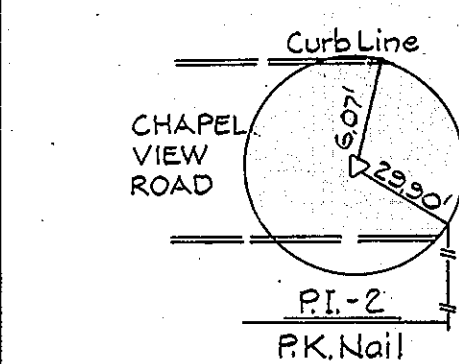
**NOTE:**  
THE SEWER MAIN EXTENSION WILL BE BUILT AS A DRY SEWER AND WILL REMAIN SO UNTIL CONNECTION TO WAGNER'S POINT WASTEWATER TREATMENT FACILITY IS APPROVED.

FOR "GENERAL NOTES" SEE DRAWING NO. 2



**Note:**  
Contractor shall test pit to determine exact location of existing 8" Water before starting any construction activities.

Marie K. Smith & Doris S. Peddicord  
C.M.P. 544/70



**PURDUM & JESCHKE**  
ENGINEERS  
1023 N. CALVERT ST.  
BALTIMORE, MARYLAND

**DEPARTMENT OF PUBLIC WORKS**  
HOWARD COUNTY, MARYLAND  
2-10-78  
DIRECTOR OF PUBLIC WORKS DATE

**CONTRACT NO. 648-WBS**  
CAPITAL PROJECT NO. S-5-6073  
CAPITAL PROJECT NO. W-6-8083

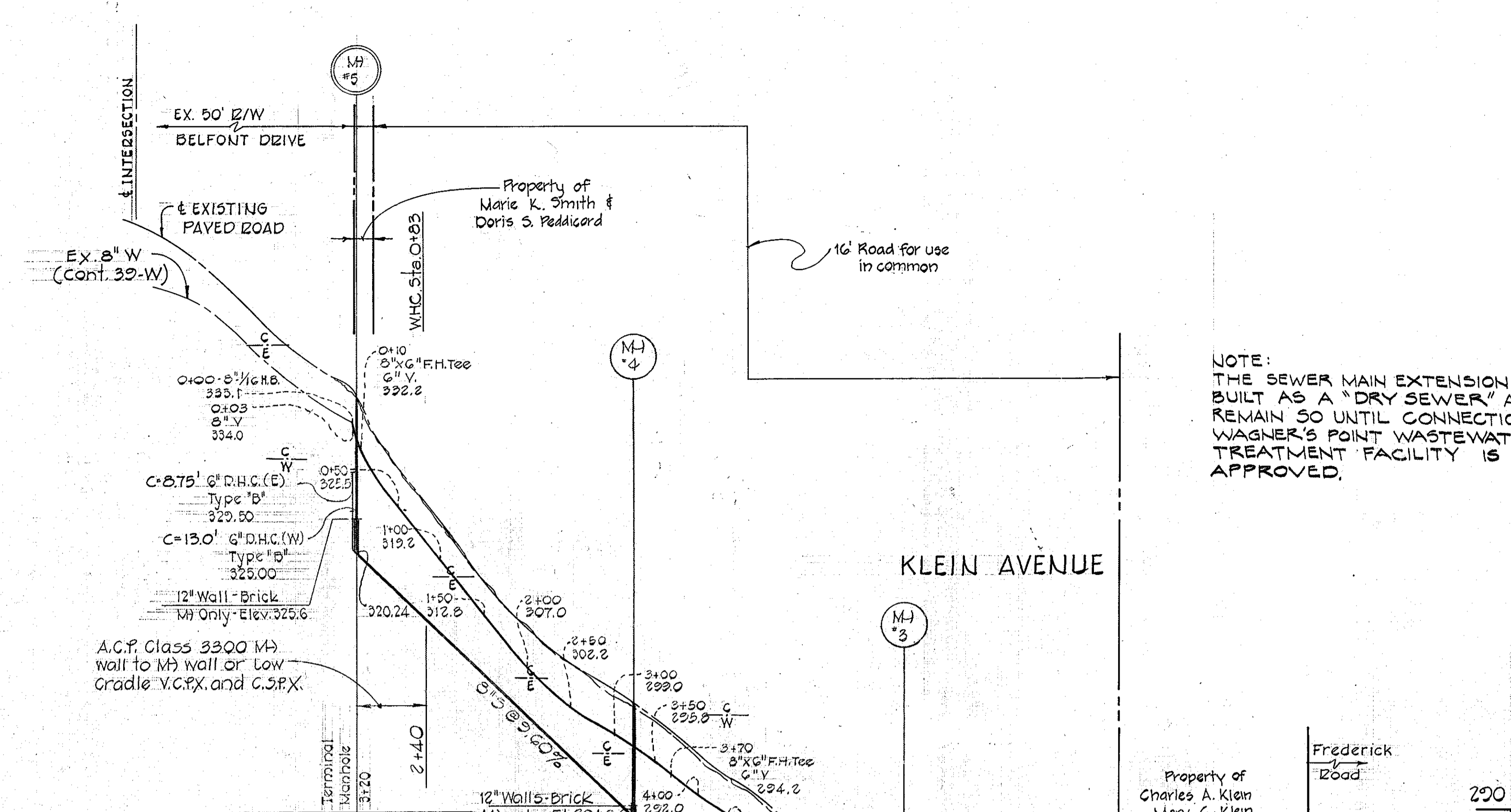
**PLANS OF WATER AND SEWER MAINS**

**KLEIN AVENUE WATER AND SEWER MAINS**  
SECOND ELECTION DISTRICT  
HOWARD COUNTY, MARYLAND

**DRAWING NO. 1 OF 2**  
SCALE 1" = 50'

Designed: RDB  
Drafted: TAW  
Checked: TAF

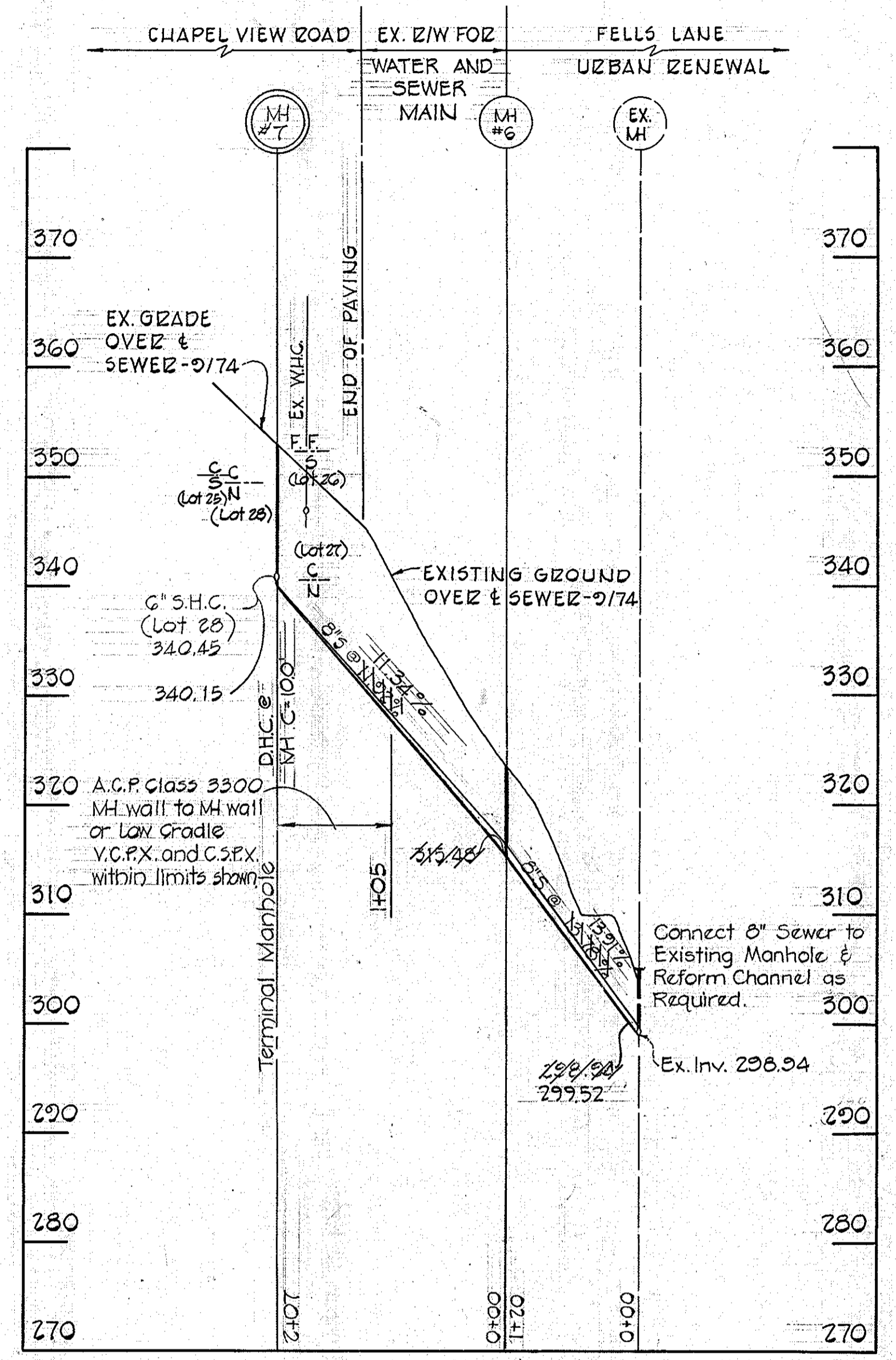
380  
370  
360  
350  
340  
330  
320  
310  
300  
290



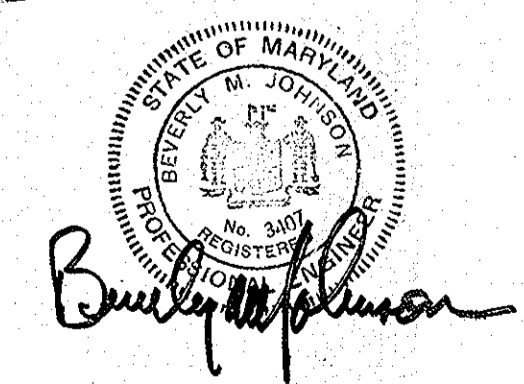
NOTE:  
THE SEWER MAIN EXTENSION WILL BE BUILT AS A "DRY SEWER" AND WILL REMAIN SO UNTIL CONNECTION TO WAGNER'S POINT WASTEWATER TREATMENT FACILITY IS APPROVED.

- GENERAL NOTES**
1. Approximate locations of existing mains are shown. The contractor shall take all necessary precautions to protect existing mains and services and maintain uninterrupted supply. Any damage incurred due to the contractor's operations shall be repaired immediately at the contractor's expense.
  2. All pipe elevations shown are  $\Delta$ invert elevations.
  3. The contractor shall locate existing utilities a minimum of two weeks in advance of construction operations in the vicinity of proposed utilities.
  4. For standard details see standards bound in specifications.
  5. Clear all utilities by a minimum of 6". Clear all utility poles by 2'-0" minimum or tunnel as required. Any costs incurred to the contractor for tunneling or bracing at poles shall be included in unit prices bid for excavation.
  6. Contractor shall notify the following utilities or agencies at least five (5) days before starting work show on these plans:  
State Highway Administration 831-8533  
Baltimore Gas & Electric Company - Underground Electric Distribution Engineering - "Damage Control" 234-5891  
Baltimore Gas & Electric Company - Underground Gas Distribution Engineering 559-0100  
Chesapeake and Potomac Telephone Company 725-3636  
Miss Utility 393-3648
  7. Trees are to be protected from damage to maximum extent. Trees located within the construction strip are not to be removed or damaged by the contractor.
  8. Place regulation "Men Working" and warning signs as required to comply with Maryland State Highway Administration manual of Traffic Control for Highway Construction and Maintenance Operations.
  9. All water mains to be C.I.P., D.I.P., or A.C.P. unless otherwise noted.
  10. Top of all water mains to have a minimum of 3'-6" cover unless otherwise noted.
  11. All valves shall be strapped to tees, where applicable, in accordance with standard details.
  12. Buttress or anchor all water main fittings with concrete. See standard details bound in the specifications.
  13. Bury line elevations on fire hydrants shall be set to the elevations shown on the drawings. All fire hydrants shall be strapped and buttressed with concrete in accordance with standard details. Soil around the fire hydrant to be compacted in accordance with Section 5-15 of the Standard Specifications.
  14. Cost of strapping fire hydrants and valves to be included in the unit price bid for furnishing and installing fire hydrants.
  15. All sewer mains shall be C.S.P.X., V.C.P.X., or A.C.P., Class 2400 unless otherwise noted.
  16. The contractor shall provide a joint in all sewer mains within 2'-0" of exterior manhole wall.
  17. All manholes shall be 4'-0" inside diameter, unless otherwise noted.
  18. All horizontal controls are based on Maryland State Coordinates.
  19. All vertical controls are based on Maryland State Datum.

CHAPEL VIEW ROAD



**PROFILE**  
Horizontal: 1" = 100'  
Vertical: 1" = 10'



CONTRACT NO. 648 W&S  
KLEIN AVENUE WATER AND SEWER MAINS  
HOWARD COUNTY CAPITAL PROJECT S-5-6073  
W-6-8083

PURDUM & JESCHKE  
ENGINEERS  
1023 N. CALVERT ST.  
BALTIMORE, MARYLAND

DEPARTMENT OF PUBLIC WORKS  
HOWARD COUNTY, MARYLAND  
2-10-78  
DIRECTOR OF PUBLIC WORKS DATE

CONTRACT NO. 648-W&S  
CAPITAL PROJECT NO. S-5-6073  
CAPITAL PROJECT NO. W-6-8083

PROFILES OF  
WATER AND SEWER MAINS

KLEIN AVENUE WATER AND SEWER MAINS  
SECOND ELECTION DISTRICT  
HOWARD COUNTY, MARYLAND

DRAWING NO. 2 OF 2  
SCALE Hor.: 1"=100' Vert.: 1"=10'  
Designed: RDB  
Drafted: ARZ  
Checked: TAF

WS 648 W-5/2

As Built August 14, 1980