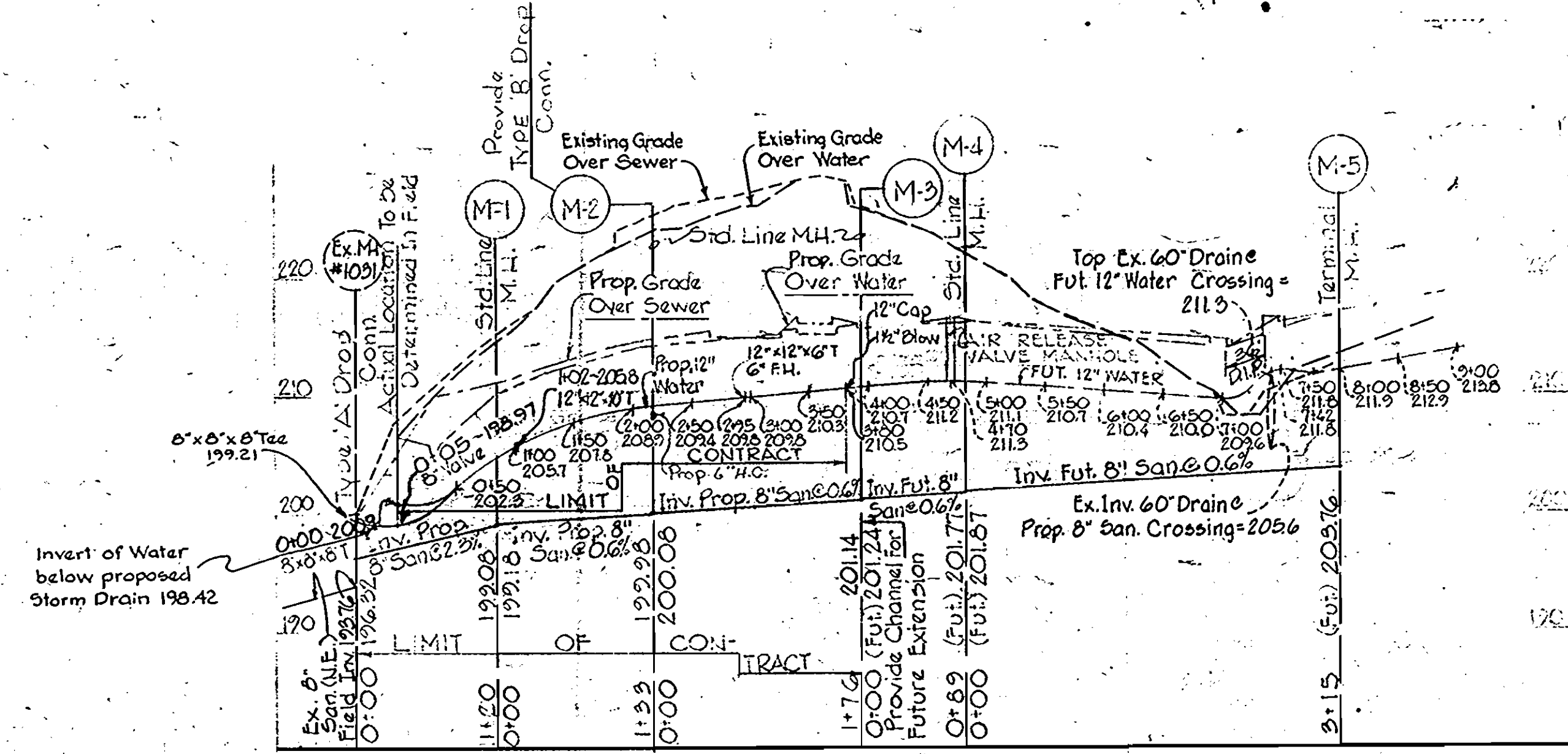


GENERAL NOTE:
 All Work To Be In Strict Accordance With Howard County, Maryland Department Of Public Works General Specifications And Details For Water Mains And Sanitary Sewers.

PLAN
 SCALE: 1"=50'



PROFILE
 Scale: Horiz 1"=100'
 Vert. 1"=10'

NOTE:
 All 6" & 8" Water Mains are C.I.P.
 All 10" & 12" Water Mains are A.C. Pressure Pipe
 All Sewer Lines VCPX

BENCH MARKS
 Maps Incorp. Sta. F-15 is 3/4" iron rod flush w/ground S side U.S. Rte. 1 in front Md. St. Police Barracks approx. 0.2 mi. N.E. P.I. U.S. 1 + Md. Rte. 175 Elev. = 228.96
 Maps Inc. Sta. F-16 is 3/4" iron rod flush w/ground S side U.S. Rte. 1 approx. 0.7 mi. N.E. P.I. with Md. Rte. 175 Elev. = 207.76

- GENERAL NOTES**
- APPROXIMATE LOCATIONS OF EXISTING MAINS ARE SHOWN. THE CONTRACTOR SHALL TAKE ALL PRECAUTIONS TO PROTECT EXISTING MAINS AND SERVICES AND MAINTAIN UNINTERRUPTED SUPPLY. ANY DAMAGE INCURRED SHALL BE REPAIRED IMMEDIATELY.
 - ALL HORIZONTAL CONTROLS ARE BASED ON MARYLAND STATE COORDINATES.
 - ALL PIPE ELEVATIONS SHOWN ARE INVERT ELEVATIONS.
 - FOR ALL STANDARD DETAILS SEE STANDARDS BOUND IN SPECIFICATIONS.
 - CONTRACTOR SHALL LOCATE EXISTING UTILITIES IN ADVANCE OF CONSTRUCTION OPERATIONS IN THE VICINITY OF PROPOSED UTILITIES.
 - ALL WATER MAINS TO BE C.I.P. UNLESS OTHERWISE NOTED.
 - TOP OF ALL WATER MAINS TO HAVE A MIN. OF 3/4" COVER UNLESS OTHERWISE NOTED.
 - ALL VALVES TO BE STRAPPED TO TEES IN ACCORDANCE WITH STANDARD DETAILS.
 - BLOCK ALL FITTINGS WITH CONCRETE SEE STANDARDS BOUND IN SPECIFICATIONS.
 - BURY LINE ELEVATIONS ON FIRE HYDRANTS SHALL BE SET TO ELEVATIONS SHOWN ON DWG. ALL FIRE HYDRANTS SHALL BE STRAPPED & BUTTRESSED WITH CONCRETE IN ACCORDANCE WITH STD. DETS. SOIL AROUND THE FIRE HYDRANT TO BE COMPACTED IN ACCORDANCE WITH SECTION 5-15 OF THE 'STANDARD SPECIFICATIONS'.
 - ALL SEWER MAINS SHALL BE V.C.P.X. OR A.C.S.P. CLASS 3300 WITH NO COMBINATIONS ALLOWED.
 - THE CONTRACTOR SHALL PROVIDE A JOINT IN ALL SEWER MAINS WITHIN 20' OF EXTERIOR MANHOLE WALLS.
 - ALL MANHOLES SHALL BE 40" INSIDE DIAMETER, UNLESS OTHERWISE NOTED.
 - CONTRACTOR TO NOTIFY HOWARD COUNTY PRIOR TO CONSTRUCTION ADJACENT TO EXISTING UTILITIES.

Port Capital Water & Sewer Extension
 Port Capital Drive
 Dorsey, Md.
 Contract 2645-D-W & S

BILL OF MATERIALS *	
Item	Quantity
8" x 8" x 8" Tee	
12" x 12" x 6" Tee	
6" Valve	
8" Valve	
6" F.H. (7' Bury)	
Cap	1-12" & 1-10"
1/2" Blow	
12" C.I.P.	380
8" x 12" Increaser	
12" x 12" x 10" Tee	
10" C.I.P.	20
2" C.I.P.	20
2" Curb Stop	1
8" V.C.P.X./A.C.S.P.	429
6" V.C.P.X./A.C.S.P.	10
Std. Line M.H.	3
6" Clay Plug	
Type "A" Drop Conn.	
Type "B" Prop. Conn.	

* Bill of Materials does not include the items for future construction.

Joseph H. Neckling
 P.P.S. No. 8973 Date: Jan 13 1975

GEORGE W. STEPHENS, JR. & ASSOC. INC.
 CONSULTING ENGINEERS
 303 ALLEGHENY AVE. TOWSON, MD. 21204

DEPARTMENT OF PUBLIC WORKS
 HOWARD COUNTY, MARYLAND
 1-30-75 DATE
W.O. Filbert
 CHIEF BUREAU OF ENGINEERING

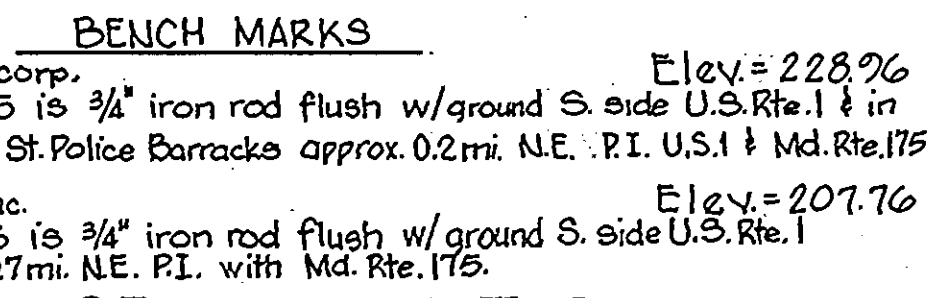
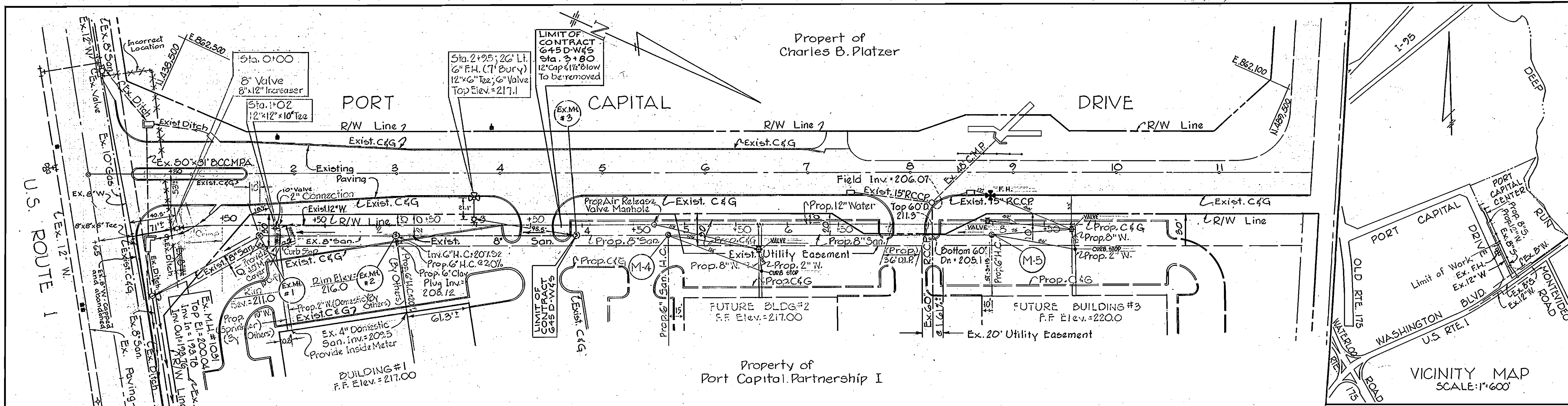
CONTRACT NO. 2645-D-W & S
 This is now an original
 1-13-76

PLAN & PROFILE
 OF
 WATER & SEWER MAINS

PORT CAPITAL CENTER
 HOWARD COUNTY, MD. ELECTION DIST. #1 JAN. 1975

DRAWING NO. 1 OF 12 SCALE As Shown

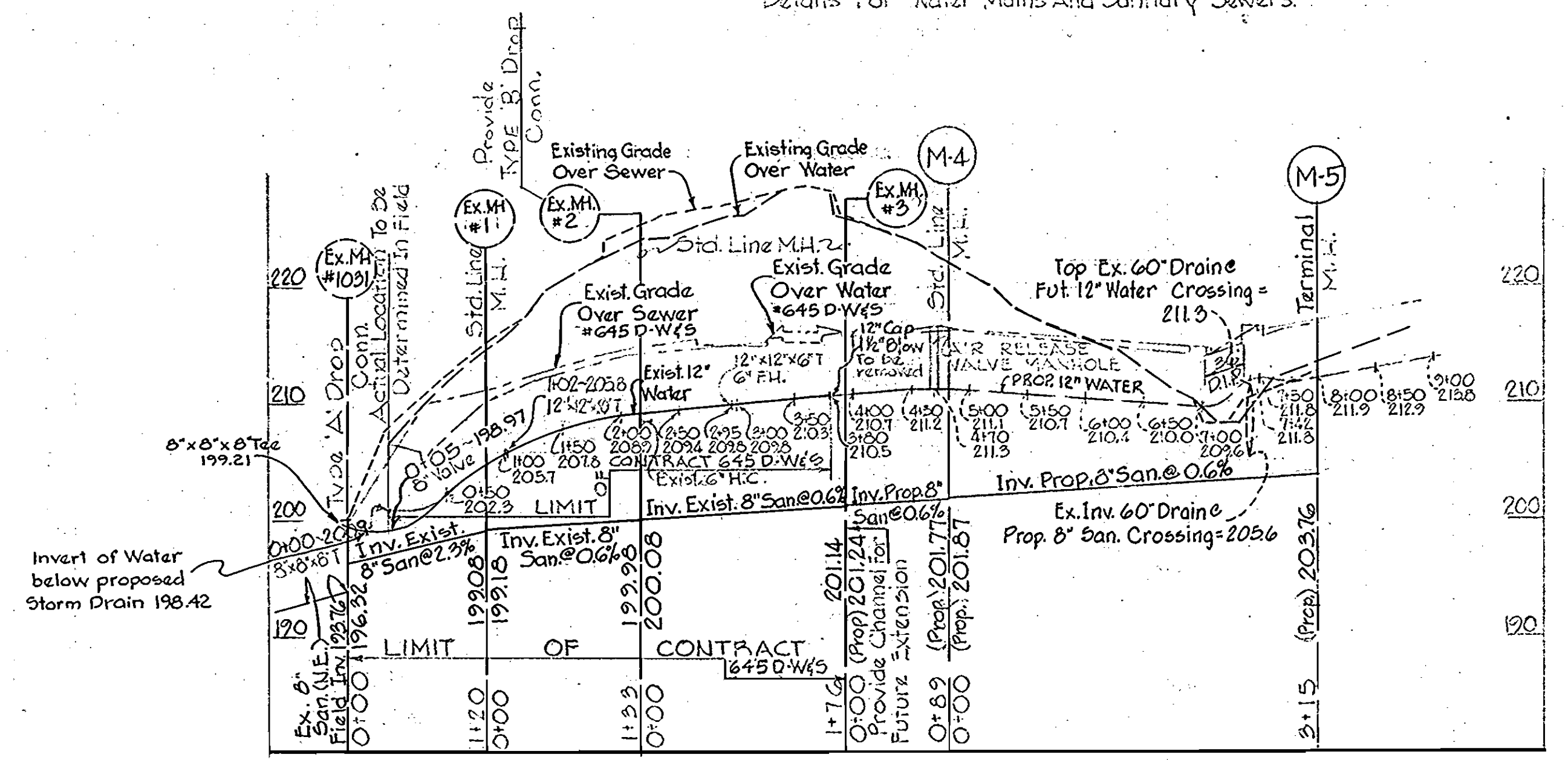
WS 645 W-5/1



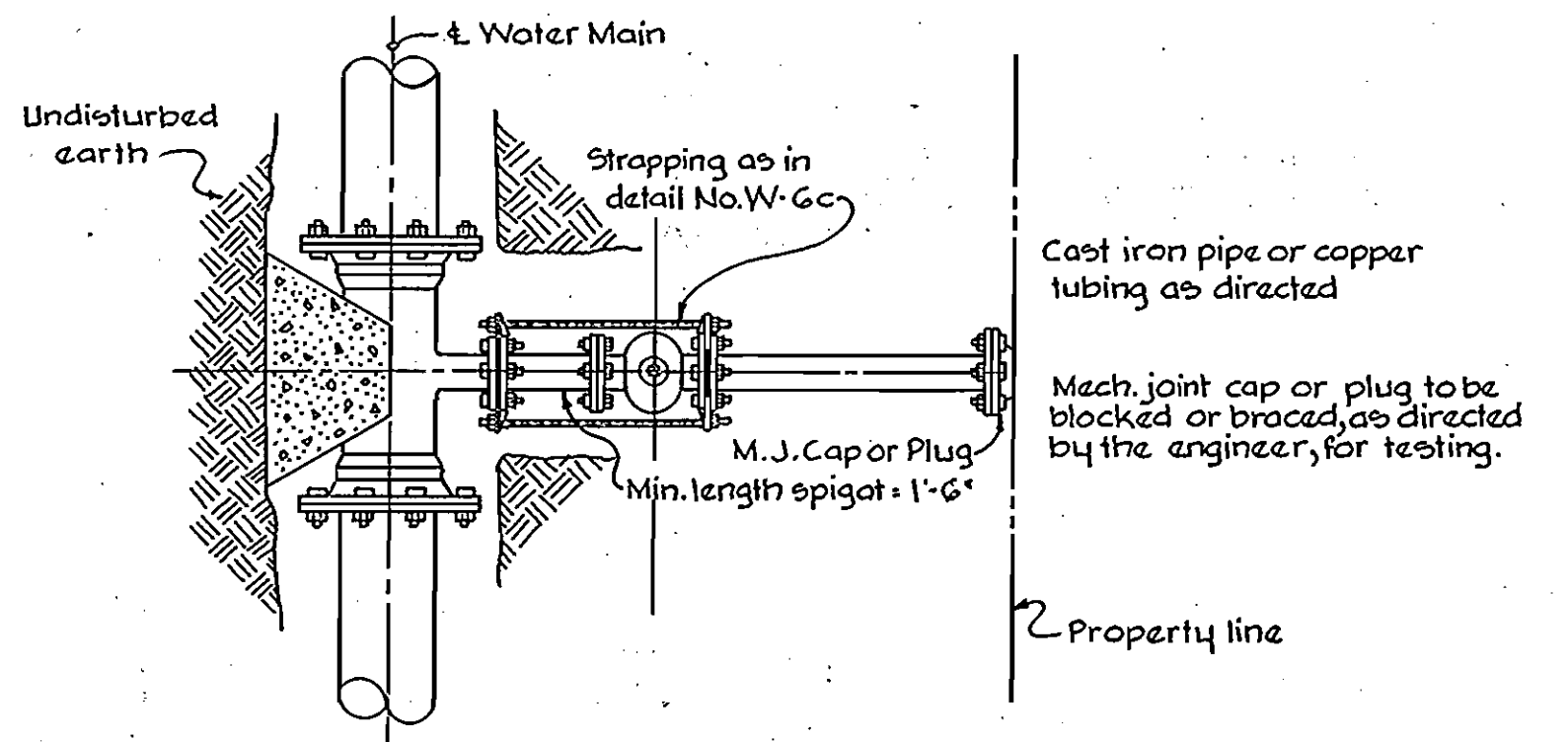
GENERAL NOTE:
 All Work To Be in Strict Accordance With Howard County, Maryland Department Of Public Works General Specifications And Details For Water Mains And Sanitary Sewers.

PLAN
 SCALE: 1"=50'

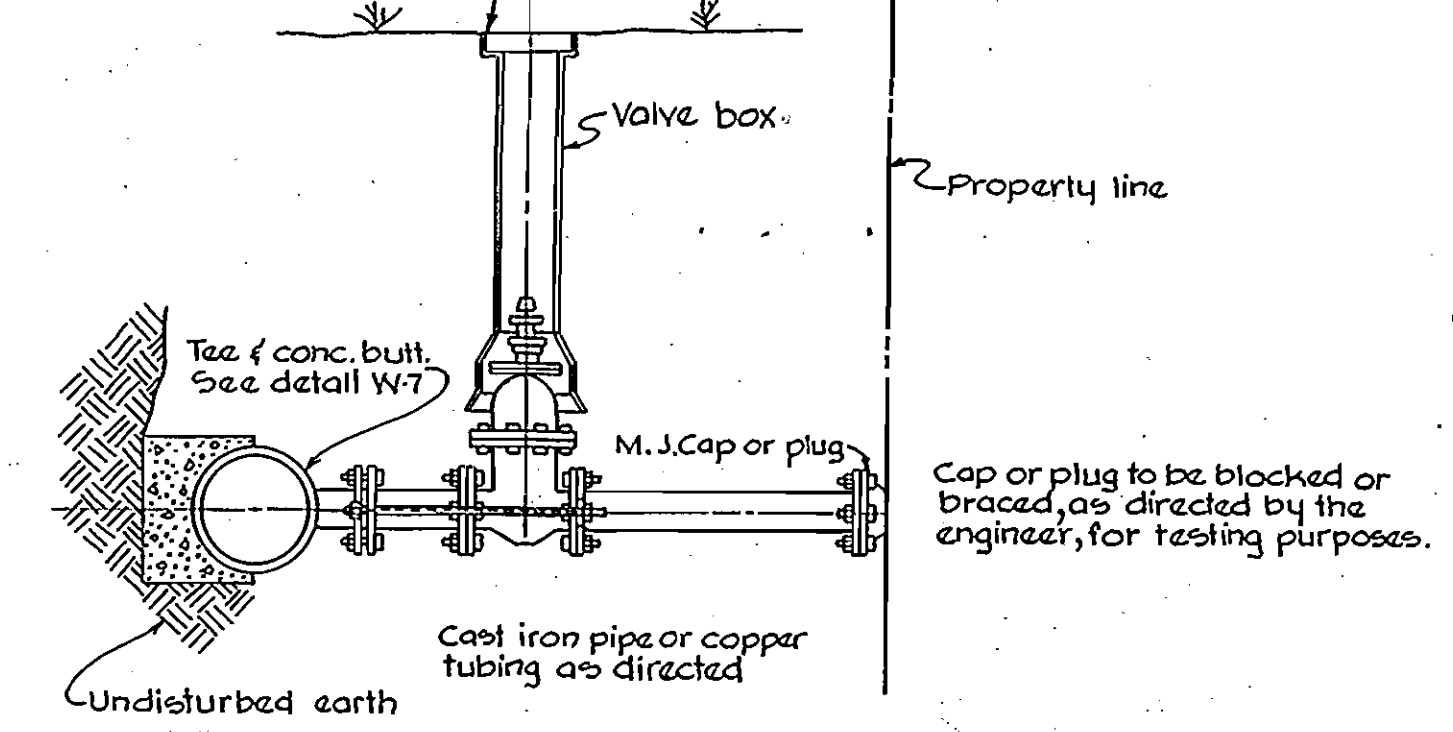
NOTE:
 All 6" & 8" Water Mains are C.I.P.
 All 10" & 12" Water Mains are A.C. Pressure Pipe
 All Sewer Lines V.C.P.X.



PROFILE
 Scale: Horiz 1"=100'
 Vert. 1"=10'



STANDARD WATER DETAIL
 WATER SERVICE CONNECTION FOR
 2" 3" 4" 6" 8" 10" 12" INSIDE
 METER SETTING
 NO SCALE



- GENERAL NOTES**
- APPROXIMATE LOCATIONS OF EXISTING MAINS ARE SHOWN. THE CONTRACTOR SHALL TAKE ALL PRECAUTIONS TO PROTECT EXISTING MAINS AND SERVICES AND MAINTAIN UNINTERRUPTED SUPPLY. ANY DAMAGE INCURRED SHALL BE REPAIRED IMMEDIATELY.
 - ALL HORIZONTAL CONTROLS ARE BASED ON MARYLAND STATE COORDINATES.
 - ALL PIPE ELEVATIONS SHOWN ARE INVERT ELEVATIONS.
 - FOR ALL STANDARD DETAILS SEE STANDARDS BOUND IN SPECIFICATIONS.
 - CONTRACTOR SHALL LOCATE EXISTING UTILITIES IN ADVANCE OF CONSTRUCTION OPERATIONS IN THE VICINITY OF PROPOSED UTILITIES.
 - ALL WATER MAINS TO BE C.I.P. UNLESS OTHERWISE NOTED.
 - TOP OF ALL WATER MAINS TO HAVE A MIN. OF 3/2" COVER UNLESS OTHERWISE NOTED.
 - ALL VALVES TO BE STRAPPED TO TEES IN ACCORDANCE WITH STANDARD DETAILS.
 - BLOCK ALL FITTINGS WITH CONCRETE, SEE STANDARDS BOUND IN SPECIFICATIONS.
 - UTILITY LINE ELEVATIONS ON FIRE HYDRANTS SHALL BE SET TO ELEVATIONS SHOWN ON DNG. ALL FIRE HYDRANTS SHALL BE STRAPPED & BUTRESSED WITH CONCRETE IN ACCORDANCE WITH STD. DNG. SOLAROUND THE FIRE HYDRANT TO BE COMPACTED IN ACCORDANCE WITH SECTION 4-04 OF THE STANDARD SPECIFICATIONS.
 - ALL SEWER MAINS SHALL BE V.C.P.X. OR A.C.S.P CLASS 2000 WITH NO COMBINATIONS ALLOWED.
 - THE CONTRACTOR SHALL PROVIDE A JOINT IN ALL SEWER MAINS WITHIN 20' OF EXTERIOR MANHOLE WALLS. ALL MANHOLES SHALL BE 40" INSIDE DIAMETER, UNLESS OTHERWISE NOTED.
 - CONTRACTOR TO NOTIFY HOWARD COUNTY PRIOR TO CONSTRUCTION ADJACENT TO EXISTING UTILITIES.

Port Capital Water & Sewer Extension
 Port Capital Drive
 Dorsey, Md.
 Contract 645-D-W&S

BUREAU OF ENGINEERING INSPECTION AND SURVEY DIVISION	DEPARTMENT OF PUBLIC WORKS HOWARD COUNTY, MARYLAND	CONTRACT NO. 645-D-W&S	PLAN & PROFILE OF WATER & SEWER MAINS	PORT CAPITAL CENTER HOWARD COUNTY, MD. ELECTION DIST. #1 JAN. 1976	DRAWING NO. 12	SCALE As Shown
	DATE 4-11-78				OF 12	

WS 645 W-5/2