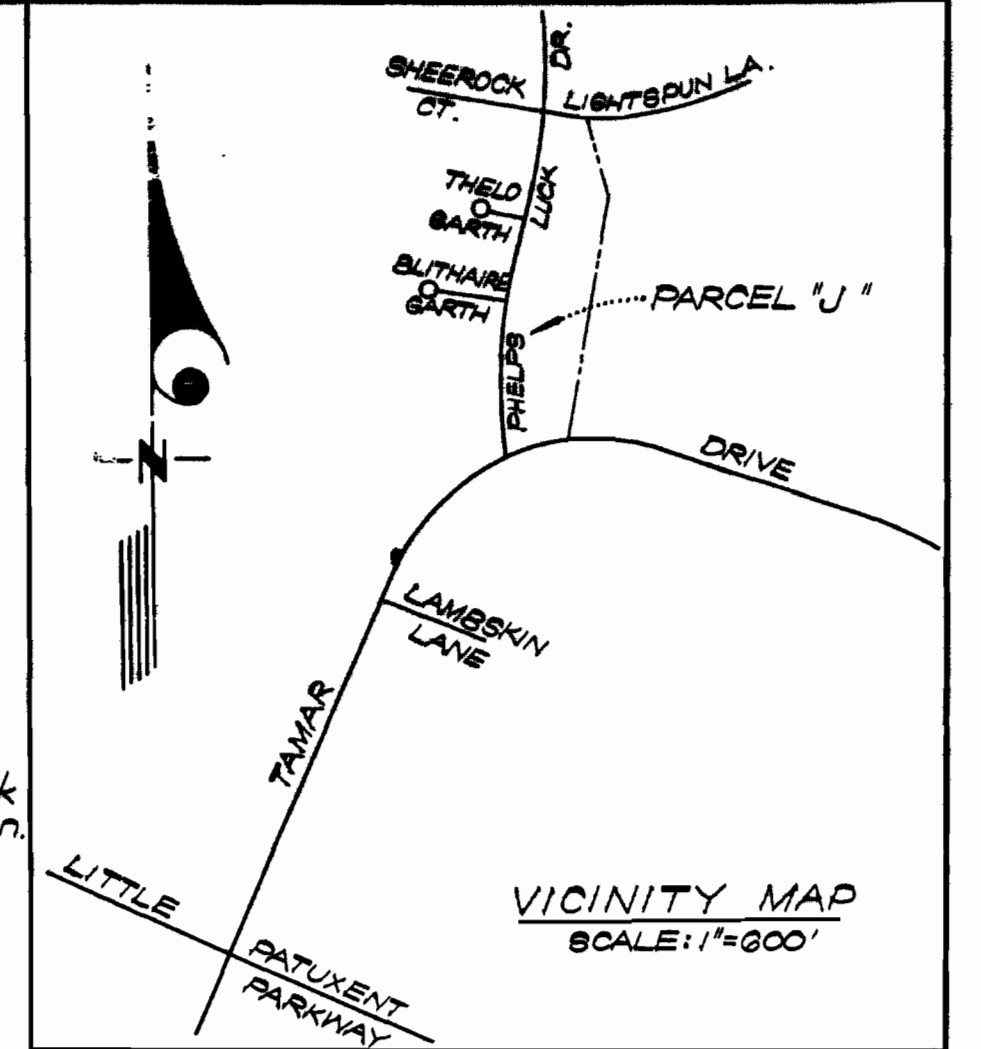


MANHOLE OVER EXIST. SEWER



**GENERAL NOTES**

- All water mains to be C.I.P., D.I.P., or A.C.P. unless otherwise shown.
- Top of all water mains to have a minimum of 3 1/2 feet cover unless otherwise noted.
- All valves shall be strapped to tees in accordance with standard details.
- Block all fittings with concrete, see standards bound in specifications.
- Bury line elevations on fire hydrants shall be set to the elevations shown on the drawings. All fire hydrants shall be strapped and buttressed with concrete in accordance with standard details. Soil around the fire hydrants to be compacted in accordance with Section 6-15 of the Standard Specifications.
- All sewer mains shall be C.S.P.X., V.C.P.X., or A.C.P. Class 2400 unless otherwise noted.
- The contractor shall provide a joint in all sewer mains within 2'-0" of exterior manhole wall.
- All manholes shall be 4'-0" inside diameter, unless otherwise noted.
- End of polyfilter X and rip cap to be included in the unit price bid for forming and laying of sewer mains.
- Cables and rope mattresses in flood plains which will be subjected to high flows may be used in place of rip cap.
- Sodding to be provided in areas of low flow.
- Water tight manhole frame and cover to be used where indicated on drawings Standard Detail 9-12 (A-C-B-A). When water tight manhole frame and cover is used, set top of frame 1'-0" above finished grade.
- Approximate locations of existing mains are shown. The contractor shall take all necessary precautions to protect existing mains and services and maintain uninterrupted supply. Any damage incurred shall be repaired immediately.
- All horizontal controls are based on Maryland State Coordinates.
- All vertical controls are based on U.S.G.S. Datum.
- All pipe elevations shown are invert elevations.
- Clear all utilities by a minimum of 6'. Clear all poles 2'-0" minimum or tunnel as required.
- For all standard details see standards bound in specifications.
- Contractor shall locate existing utilities in advance of construction operations in the vicinity of proposed utilities.
- Contractor shall notify the following utilities or agencies at least five (5) days before starting work shown on these plans:
  - State Highway Administration - 531-5533
  - Baltimore Gas and Electric Company - Underground Electric Distribution, Engineering - "Damage Control" - 234-5631
  - Baltimore Gas and Electric Company - Underground Gas Distribution, Engineering - 553-0100
  - Chesapeake and Potomac Telephone Co. - 725-9976
  - American Telephone and Telegraph - Cable Location Division - 301-393-3553
  - Colonial Pipeline Company - 781-4641
- Trees are to be protected from damage to maximum extent. Trees located within the construction strip are not to be removed or damaged by the contractor.
- Contractor shall remove trees, stumps and roots along line of excavation as directed by the Engineer. Payment for such removal shall be included in the unit price bid for excavation and backfill for water and sewer mains.
- Place regulation "Men Working" and warning signs as required to comply with Maryland State Highway Administration Manual of Traffic Control for Highway Construction and Maintenance Operations.

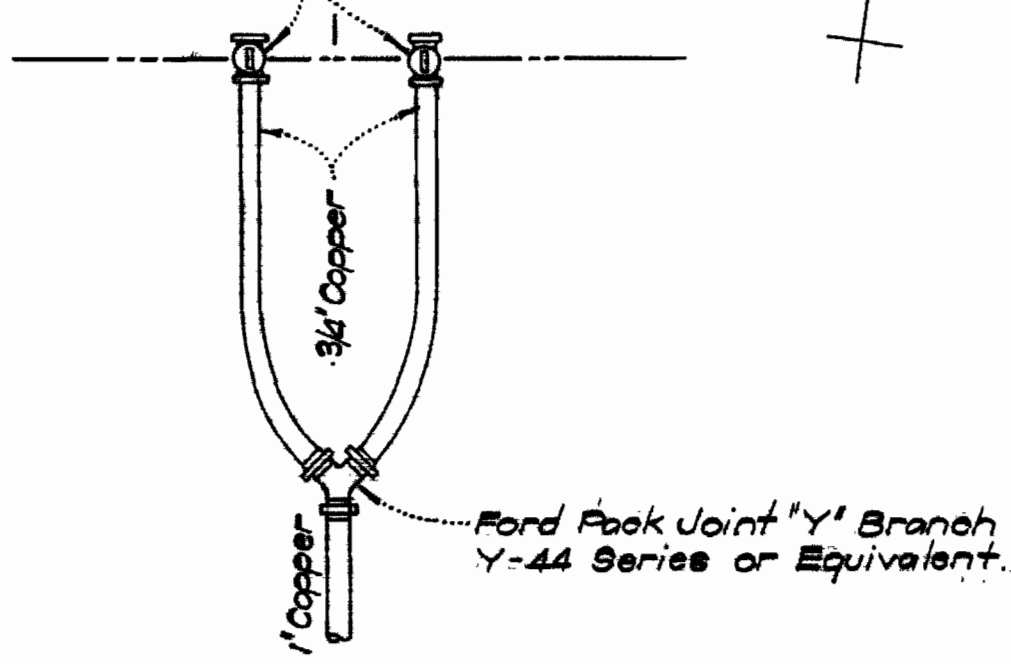
Bench Mark Elev. 421.29  
Top of Fire Hydrant.

Bench Mark Elev. 391.54  
Corner of Inlet.

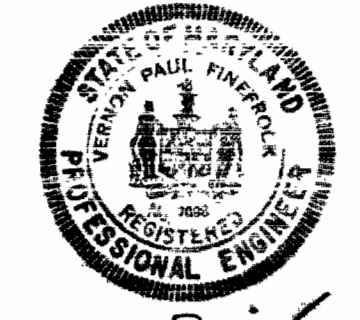
Bench Mark Elev. 405.50  
Corner of Inlet.

NOTE: RIGHTS OF WAY TO HAVE A 10' CONSTRUCTION STRIP ON EACH SIDE AS SHOWN.

3/4" Curb Stops to be set on Easement Line



TWIN WATER HOUSE CONN.'S		
LOTS	J-2 THRU J-9	
LOTS	J-11 THRU J-14	
LOTS	J-16 THRU J-23	
LOTS	J-24 THRU J-27	
LOTS	J-28 THRU J-31	
LOTS	J-32 THRU J-39	
LOTS	J-41 THRU J-44	
LOTS	J-45 THRU J-50	
TOTAL	23 TWIN WHC'S	



ITEM	QUANTITY	
8" Sewer	395 LF	384
6" Water	525 LF	510
8" Water	285 LF	242
Fire Hydrants	3	

**CLARK • FINEBROCK & SACKETT**  
ENGINEERS • PLANNERS • SURVEYORS  
SILVER SPRING, MARYLAND

DEPARTMENT OF PUBLIC WORKS  
HOWARD COUNTY, MARYLAND  
DATE: 4-17-75  
Dennis P. Zingales  
111575  
CHIEF BUREAU OF ENGINEERING

CONTRACT NO. 2639D W&S

PLAN OF  
WATER & SEWER MAINS

COLUMBIA  
VILLAGE OF LONGREACH  
ELECTION DISTRICT - GUILFORD NO.6

DRAWING NO. 1 OF 2  
SCALE 1" = 50'

As BUILT 10-30-75 M. WILSON

WS 639 W-5/1

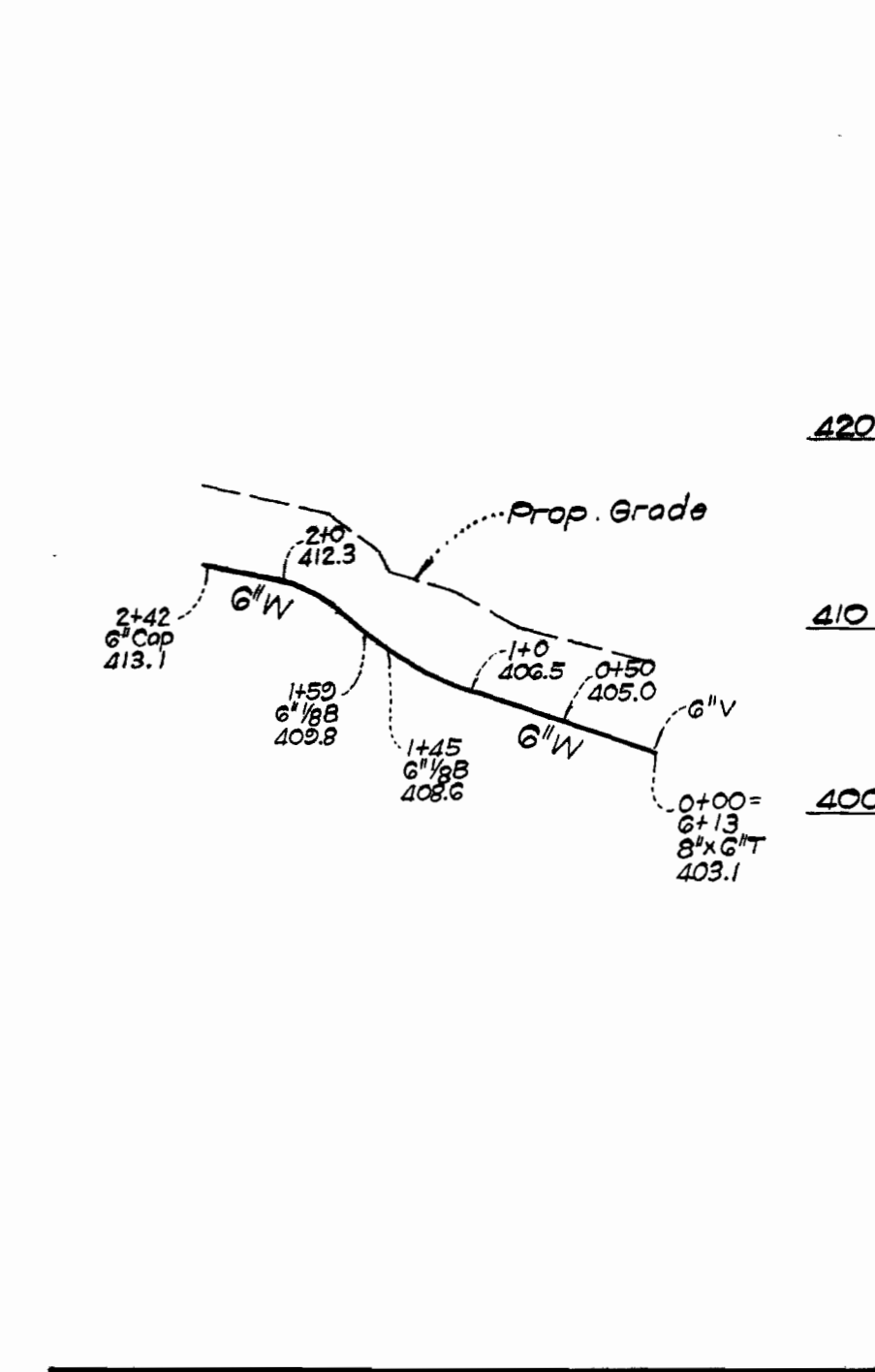
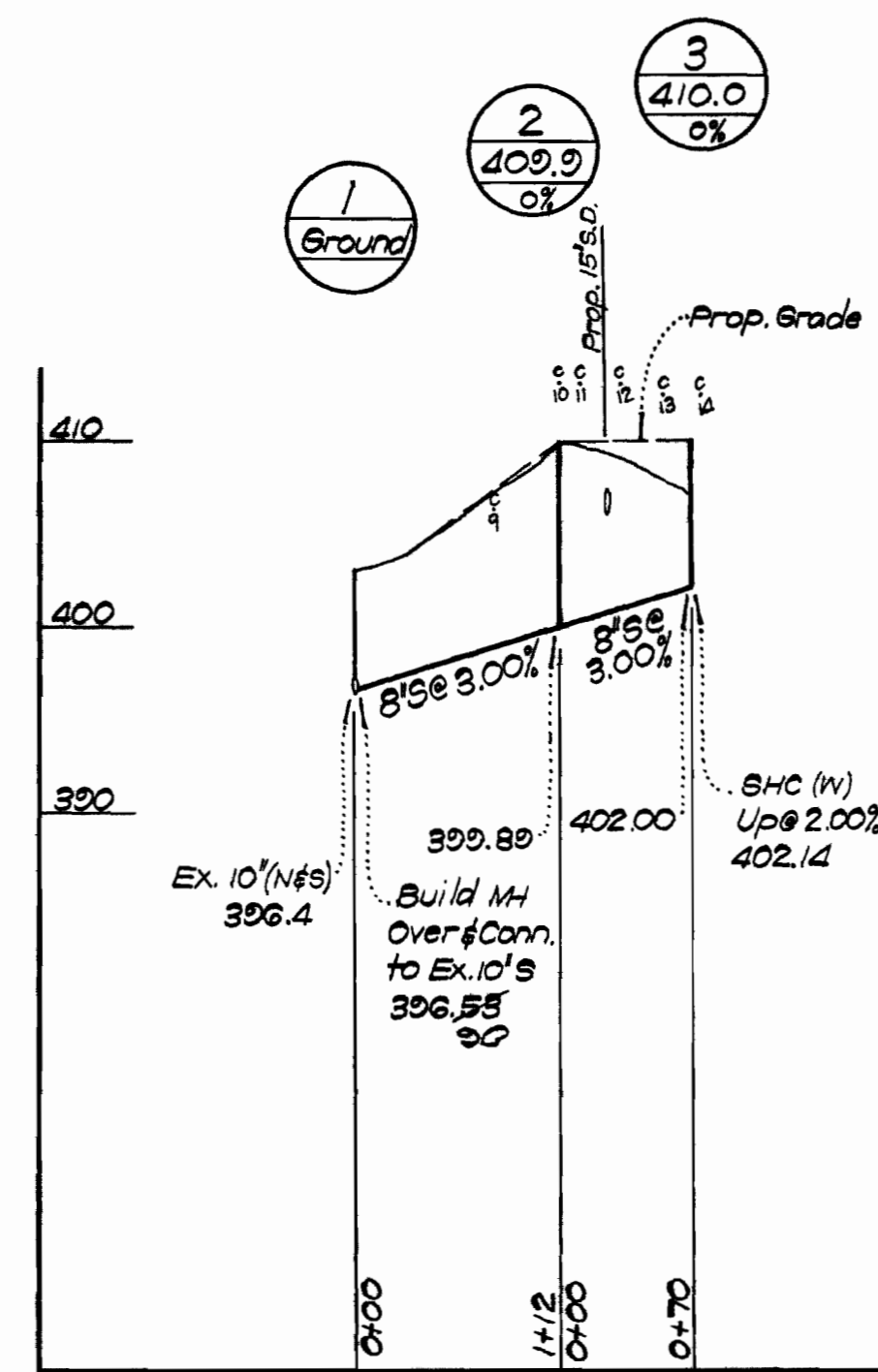
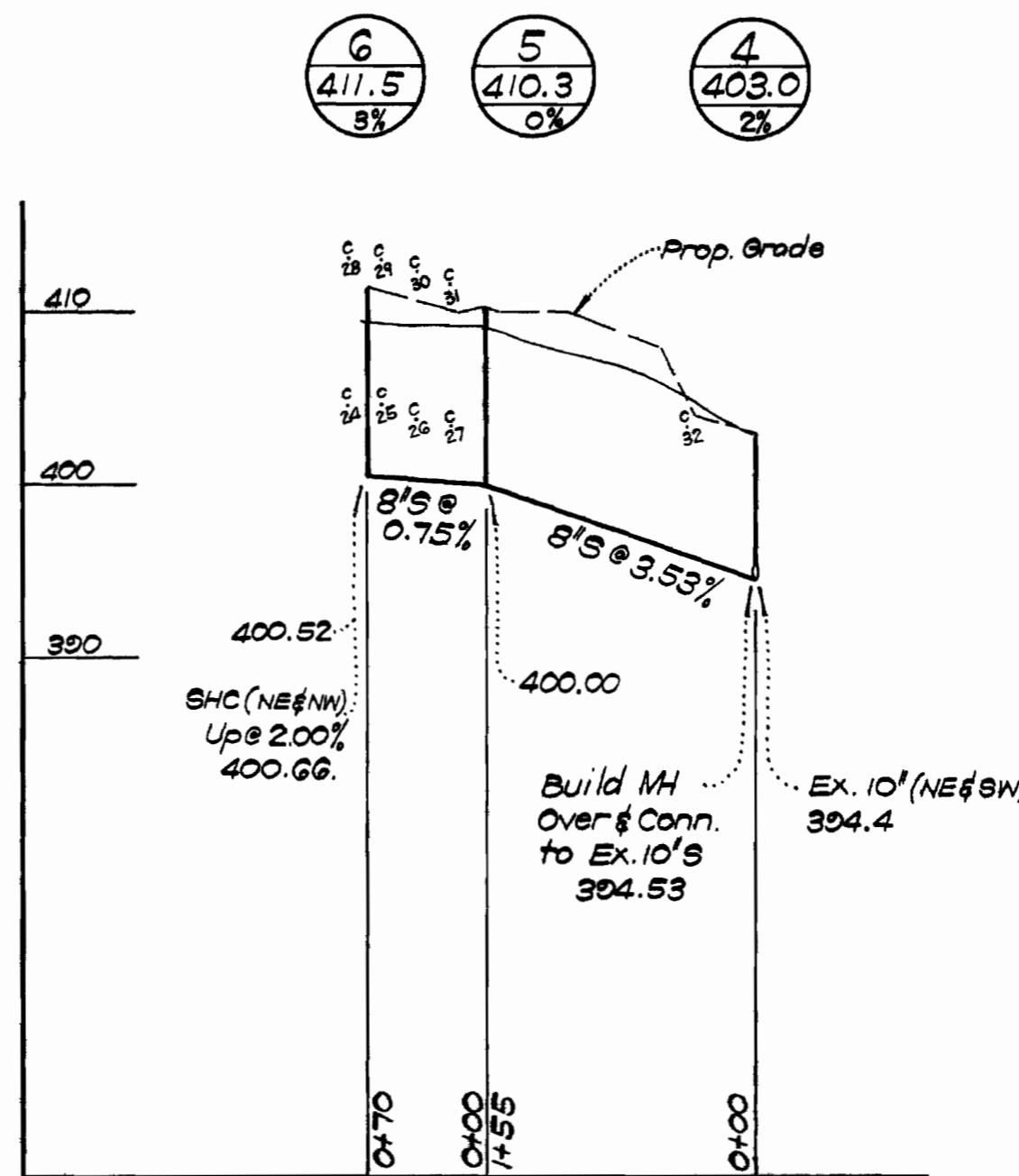
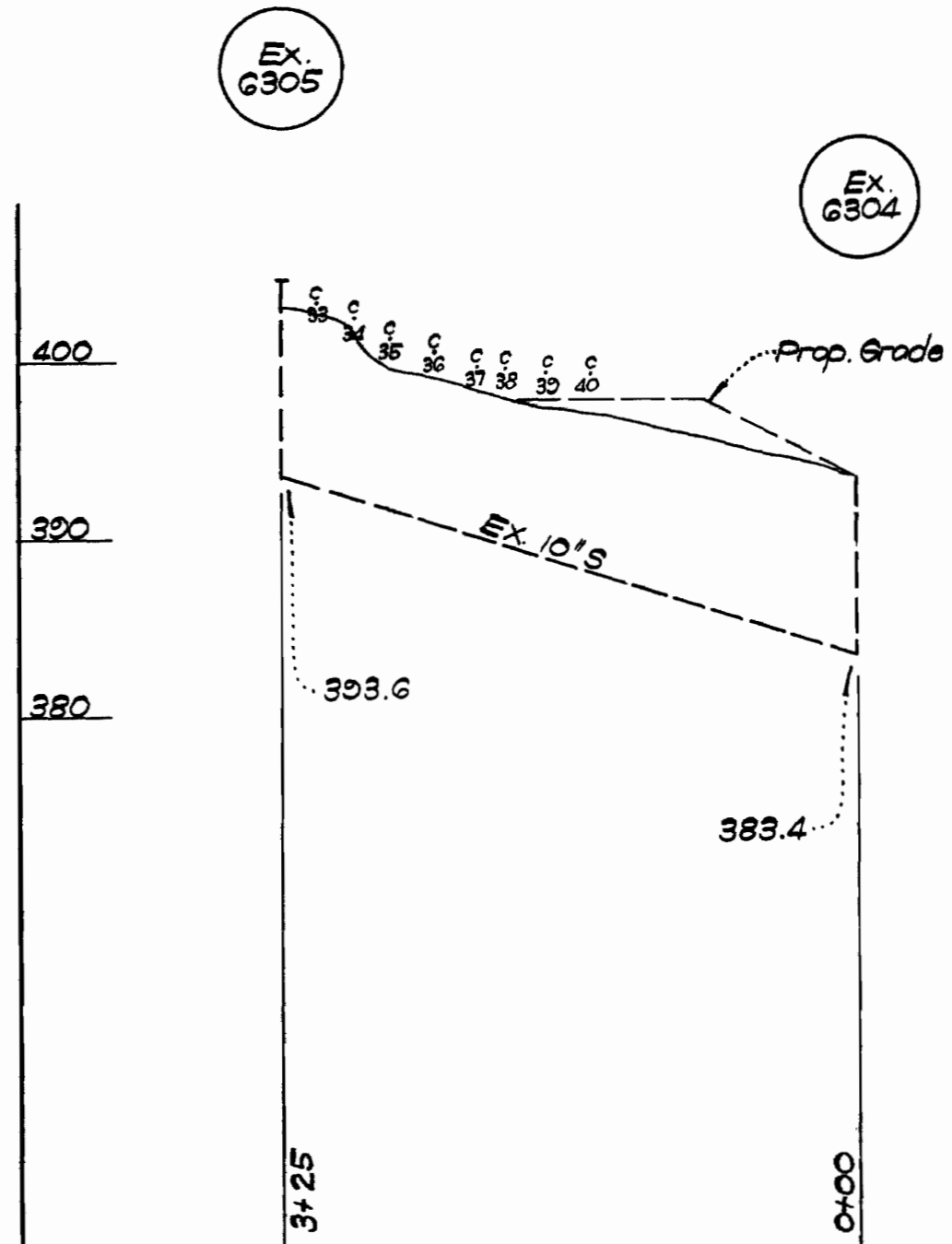
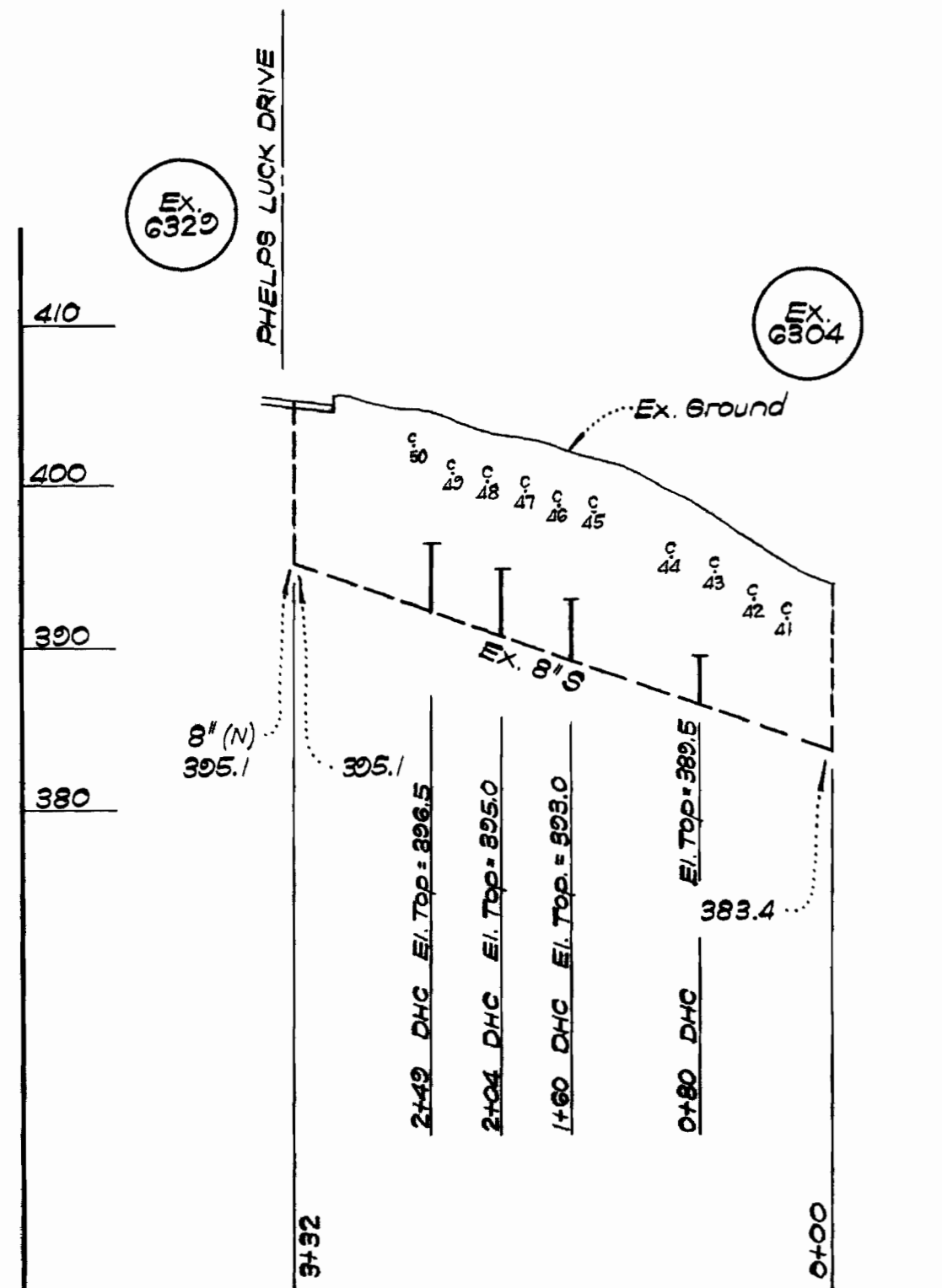
LOTS J-41 THRU J-50

LOTS J-33 THRU J-40

LOTS J-24 THRU J-31

LOTS J-10 THRU J-14

LOTS J-28 THRU J-31

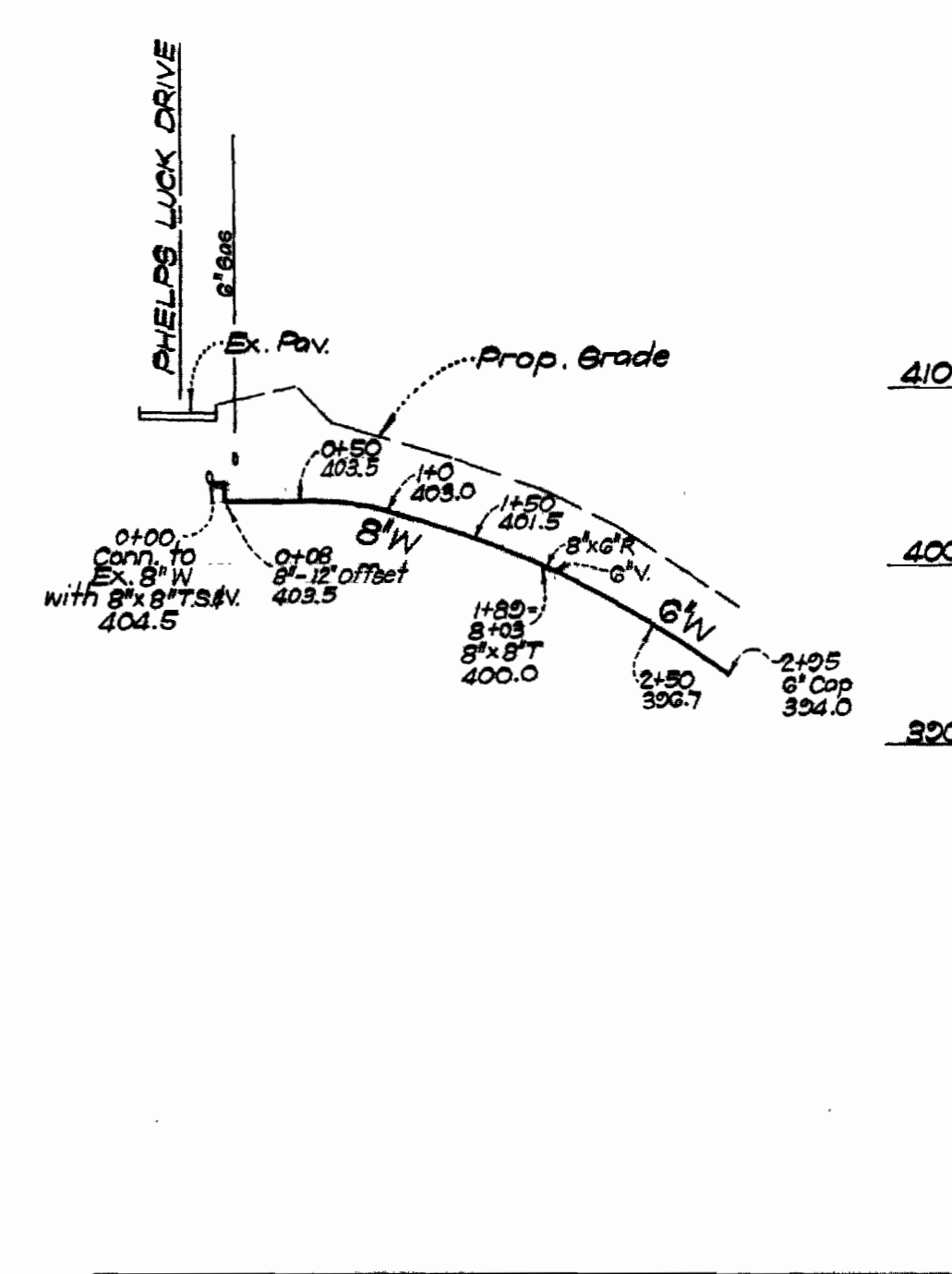
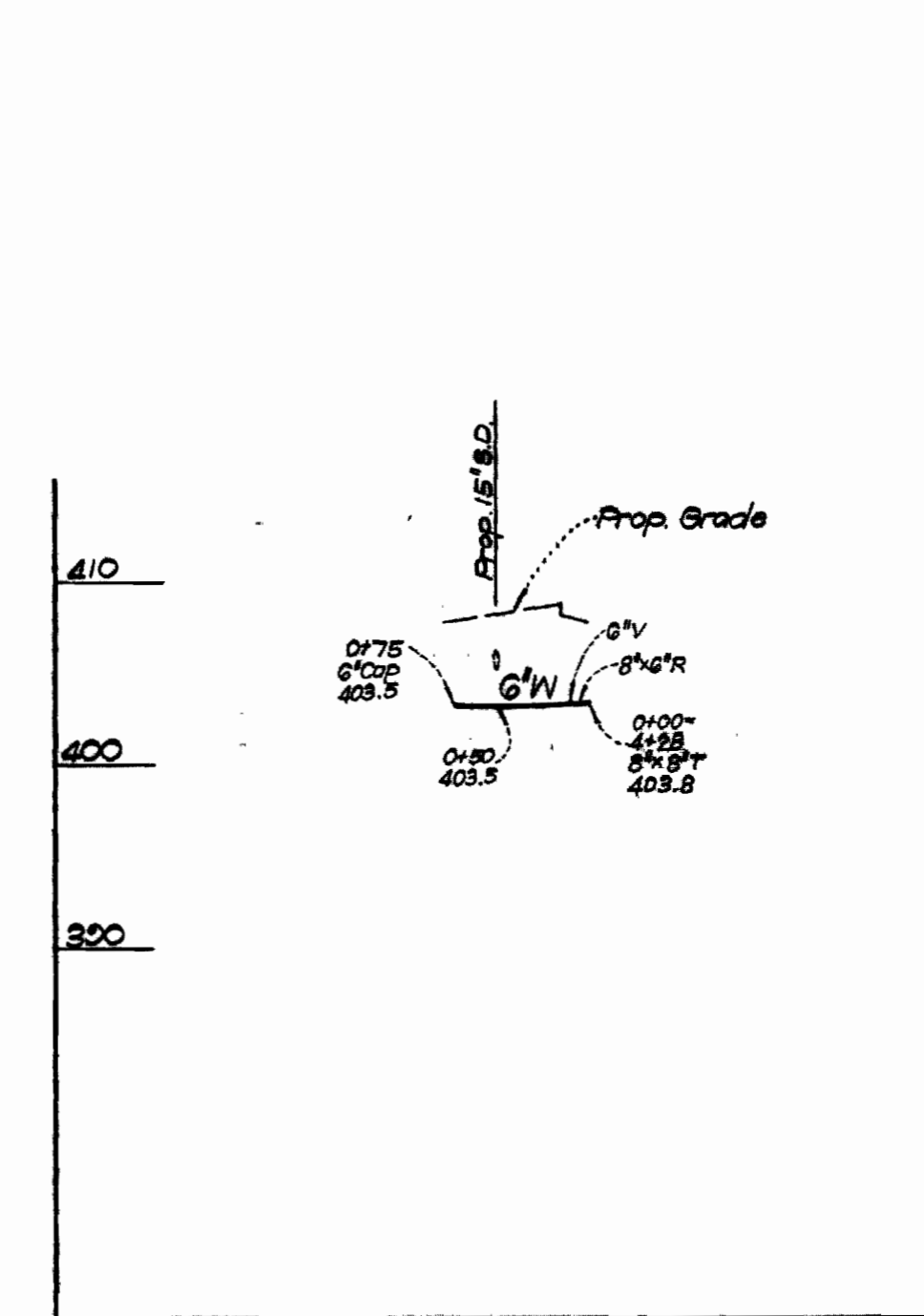
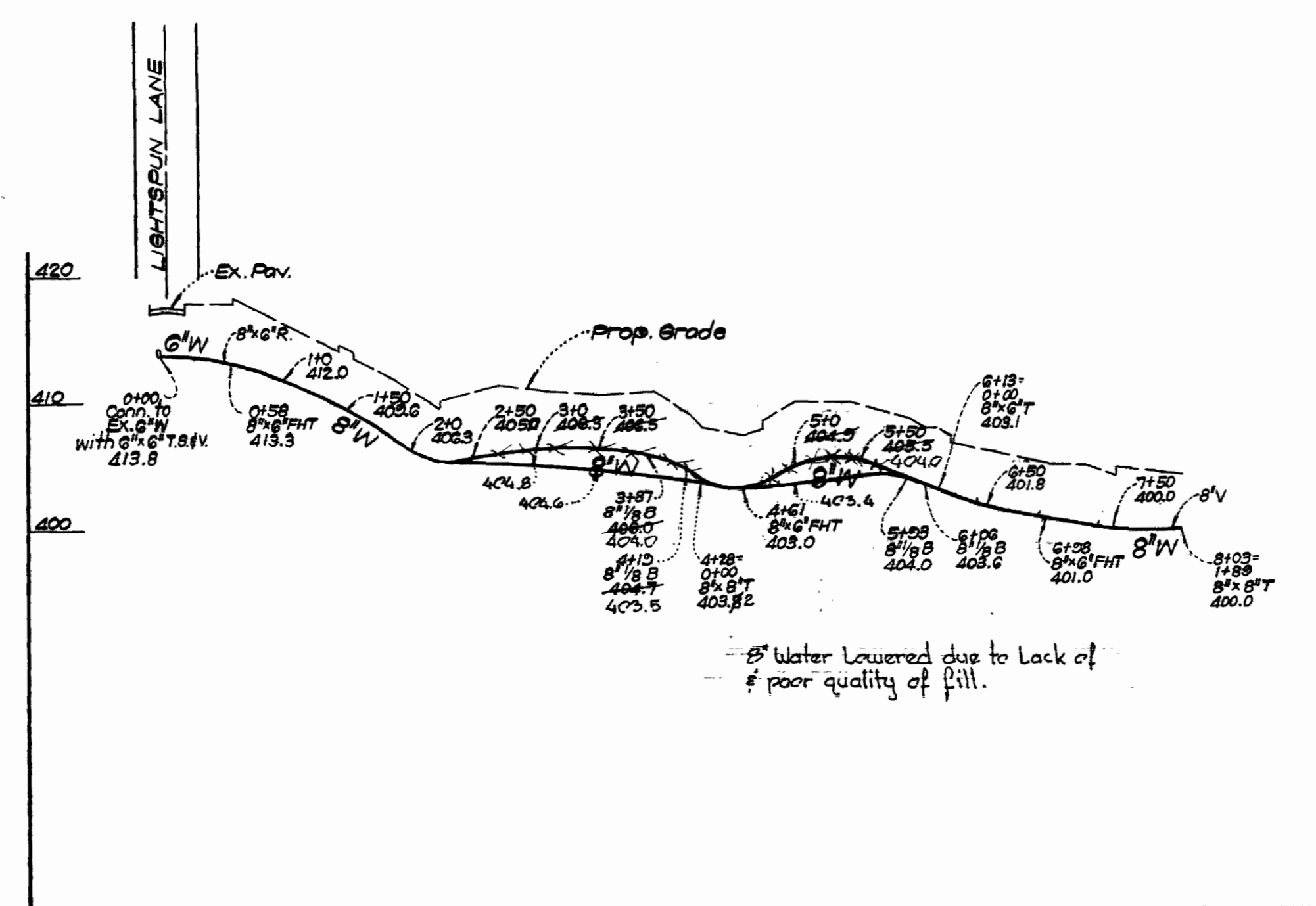
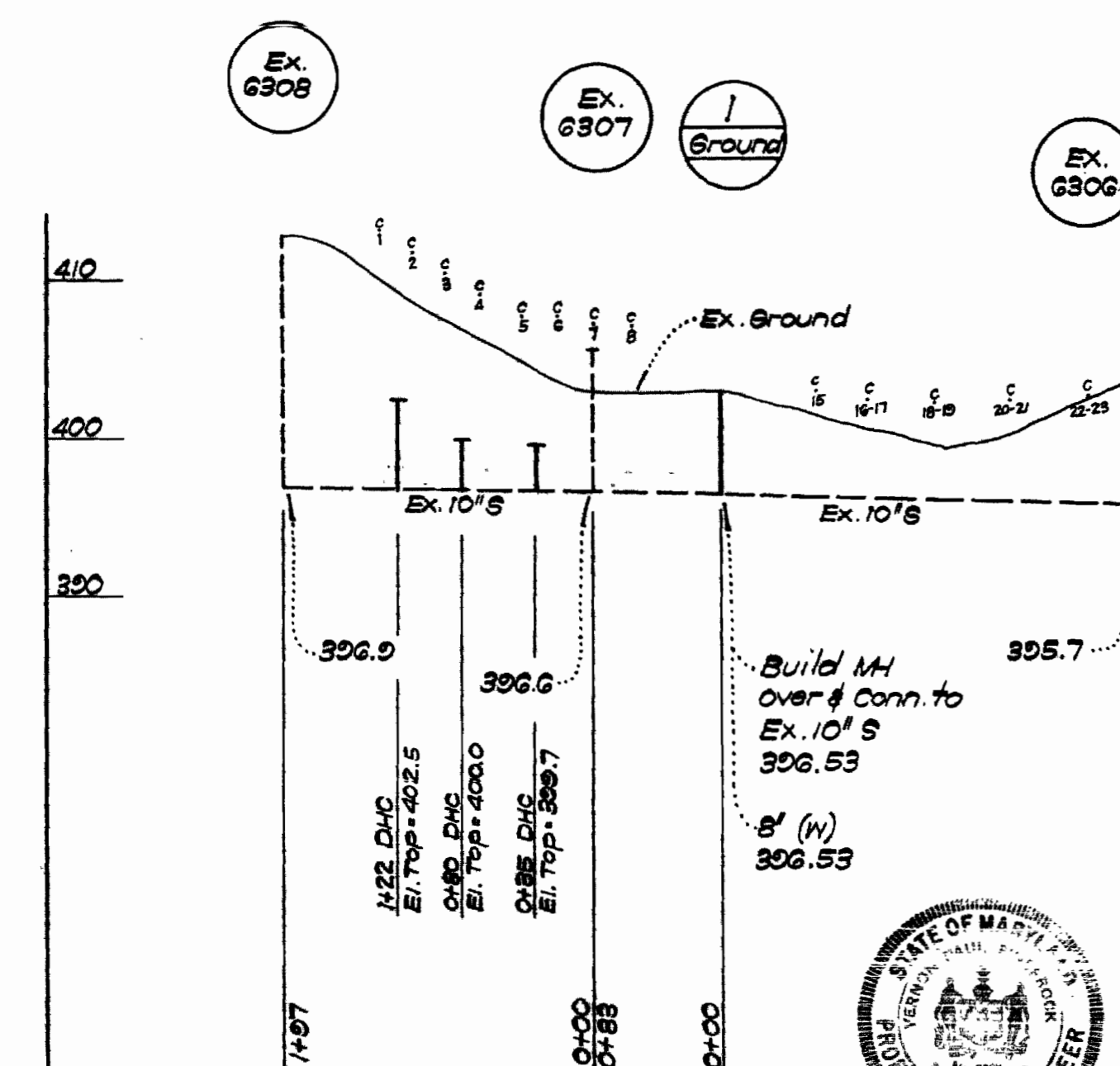


LOTS J-1 THRU J-2

LOTS J-1 THRU J-14 - J-18 THRU J-27  
# J-32 THRU J-40

LOTS J-15 THRU J-18

LOTS J-41 THRU J-50



Vernon P. Ringford  
1/15/75



PROFILE SCALE  
HOR. 1"=100'  
VERT. 1"=10'

COLUMBIA  
VILLAGE OF LONGREACH  
SECTION I - AREA I  
LOTS J-1 THRU J-51  
CONTRACT NO 2639 D W # 6

**CLARK • FINEROCK & SACKETT**  
ENGINEERS • PLANNERS • SURVEYORS  
SILVER SPRING, MARYLAND

DEPARTMENT OF PUBLIC WORKS  
HOWARD COUNTY, MARYLAND  
4-17-75  
W. O. Libbert  
CHIEF-BUREAU OF ENGINEERS

CONTRACT NO. 2639 D W # 6

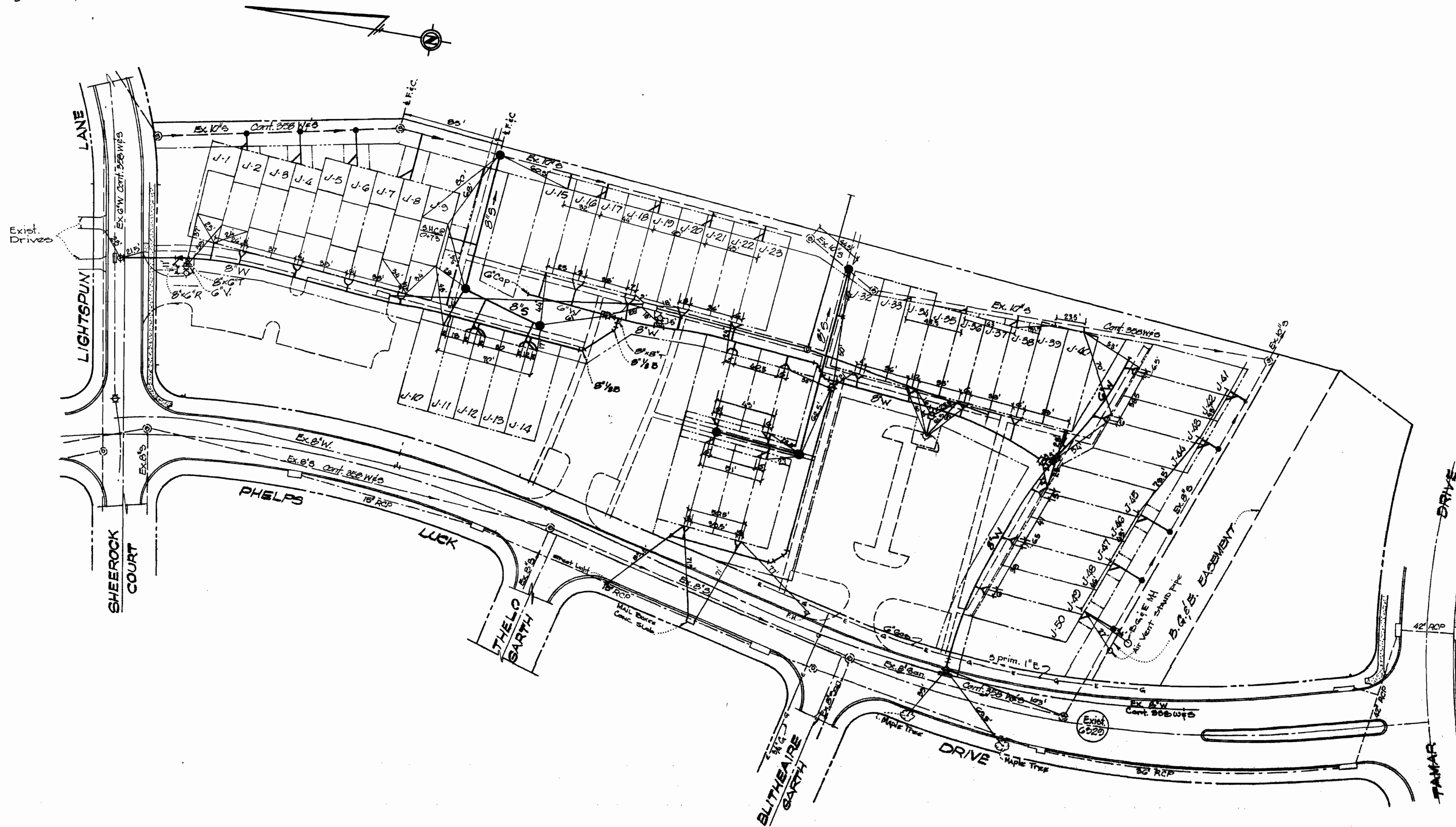
PROFILES OF  
WATER & SEWER MAINS

COLUMBIA  
VILLAGE OF LONGREACH  
ELECTION DISTRICT - GUILFORD NO. 6

DRAWING NO. 2 OF 3  
SCALE AS SHOWN

As Built 10-30-75 W. WILKIN

Sewer House Connections to Lots J-1 thru J-5  
 were completed by builder's plumber before  
 As Built drawing was compiled.



COLUMBIA  
 VILLAGE OF LONGREACH  
 SECTION 1 AREA 1  
 LOTS J-1 THRU J-51  
 CONTRACT NO 2639 D WFD

HOWARD COUNTY, MARYLAND DEPARTMENT OF PUBLIC WORKS BUREAU OF ENGINEERING INSPECTION & SURVEYS DIVISION	DEPARTMENT OF PUBLIC WORKS HOWARD COUNTY, MARYLAND DATE _____ CHIEF-BUREAU OF _____	CONTRACT NO. <del>1622</del> D WFD	RECOVERY INFORMATION WATER & SEWER MAINS	COLUMBIA VILLAGE OF LONGREACH ELECTION DISTRICT GUILFORD NO.6	DRAWING NO. 3 OF 3 SCALE 1" = 50' Dwg. 4.11
---	---	------------------------------------	---	---	---

As Built 10-30-75 M. WILHELM