

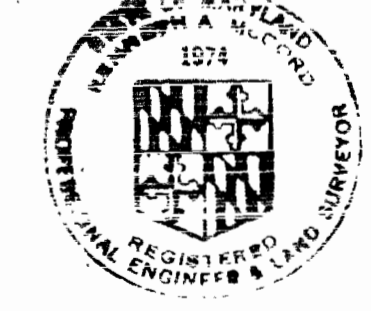
VICINITY MAP  
Scale: 1" = 1/2 Mile

**GENERAL NOTES**

- Approximate location of existing mains are shown. The Contractor shall take all necessary precautions to protect existing mains and services and maintain uninterrupted supply. Any damage incurred shall be repaired immediately.
- All pipe elevations shown are invert  $\ominus$  elevations.
- The Contractor shall locate existing utilities a minimum of two weeks in advance of construction operations in vicinity of utilities.
- Clear all utilities by a minimum of 6'; clear all poles by 2'-0" minimum or tunnel as required.
- All water mains shall have a minimum of 3 1/2' cover unless otherwise noted.
- Profile stations may have to be adjusted as required to conform to plan dimensions.
- For all standard details see standards bound in Specifications.
- Block all fittings with concrete, except as otherwise noted, see standards bound in specifications.
- All fire hydrants shall be strapped to the tee and shall be buttressed with concrete in accordance with standard details. Soil around the fire hydrants shall be compacted in accordance with Section 5-15 of the Standard Specifications.
- Bury line elevation on fire hydrants shall be the same as edge of paving, top of curb, or as directed by the Engineer in the field.
- Cost of strapping fire hydrants and valves to tees shall be included in the unit price bid for furnishing and installing fire hydrants.
- All water mains to be C.I.P., D.I.P., or A.C.P. unless otherwise noted.
- The Contractor shall notify the following utilities or agencies at least five days before starting work shown on these Drawings:  
 Baltimore Gas and Electric Company  
 Undergound Gas Distribution Engineering 559-0100  
 Undergound Electric Distribution Engineering  
 Damage Control 736-5631  
 Chesapeake and Potomac Telephone Company - 725-9976  
 Miss Utility - 1-800-441-8355
- Trees are to be protected from damage to maximum extent. Trees located within the construction strip are not to be removed by the Contractor.
- All horizontal and vertical controls are based on Maryland State Datum.

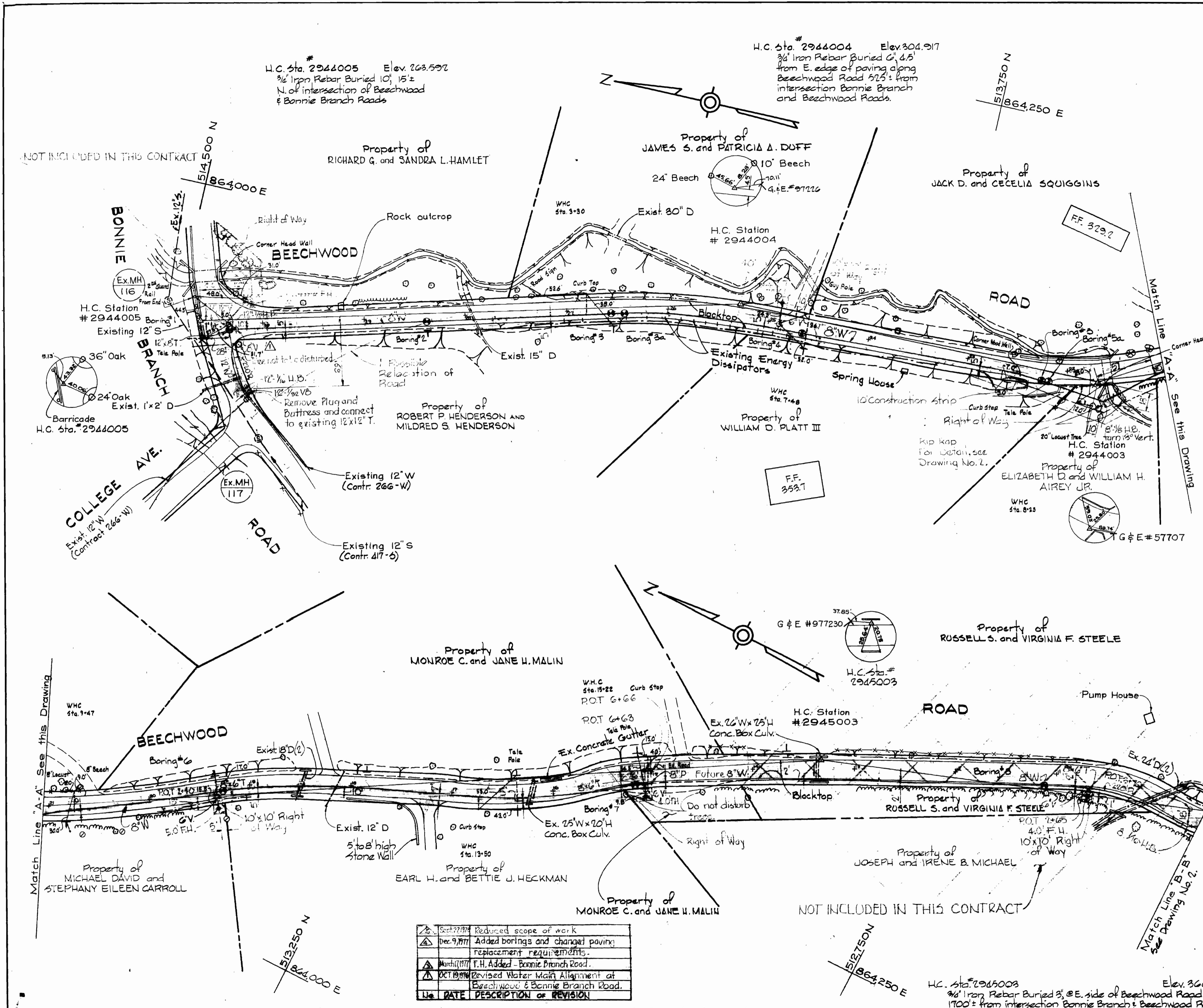
QUANTITIES	
ITEM	QUANTITY
8" Water main	651 L.F.
6" Water main	1359 L.F.
12" Water main	105 L.F.
Fire Hydrants	3

D.I.P. WATER PIPE  
**AS-BUILT**  
Stakeout: FB# 6221  
Diary: FB# 6221



*James M. Malin*

Beechwood Road  
Project No. W4-8043  
Contract No. 634-W



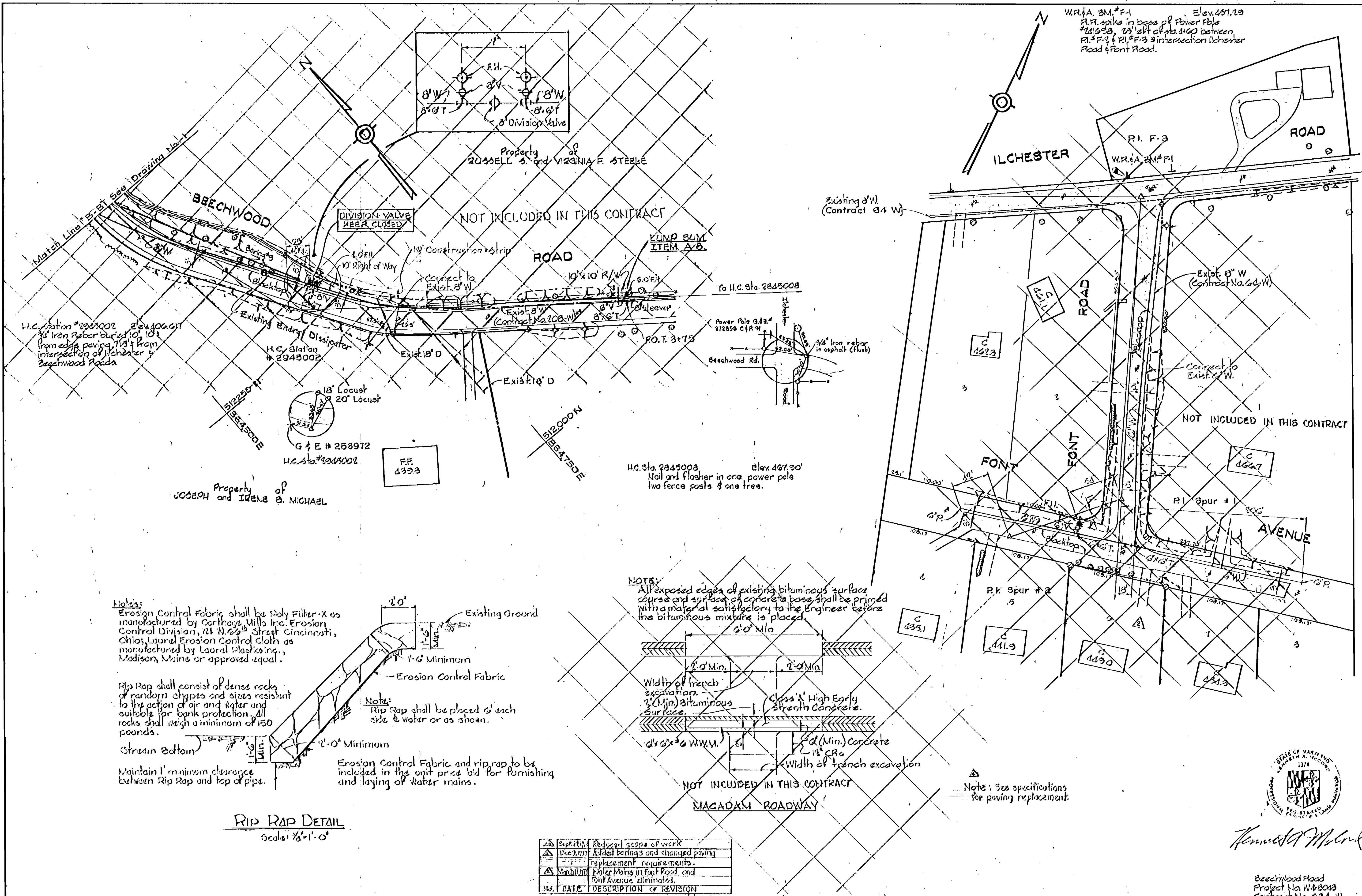
DATE	DESCRIPTION OF REVISION
Sept 27, 1977	Reduced scope of work
Dec 9, 1977	Added borings and changed paving; replacement requirements.
March 1977	F.H. Added - Bonnie Branch Road.
Oct 1977	Revised Water Main Alignment at Beechwood & Bonnie Branch Road.

WS 634-W/1

<b>WHITMAN, REQUARDT &amp; ASSOCIATES</b> ENGINEERS 1304 ST. PAUL ST. BALTIMORE, MARYLAND	<b>DEPARTMENT OF PUBLIC WORKS</b> HOWARD COUNTY, MARYLAND 1-6-75 <i>W. O. Falbert</i> CHIEF BUREAU OF ENGINEERING	<b>CONTRACT NO. 634-W</b>	<b>PLAN OF WATER MAINS</b>
<b>ELECTION DISTRICT ELKRIDGE No. 1</b>		<b>DRAWING NO. 1 OF 3</b>	<b>SCALE AS SHOWN</b> 1/4" = 1'-0" 1/8" = 1'-0" 1/16" = 1'-0"

W. O. 6936-2

AS-BUILT September 29, 1978 FB# 6221



W.P. & B.M. # F-1 Elev. 457.20  
 P.F. spike in base of Power Pole #21623, 25' left of rd. 100' between P.I. # F-2 & P.I. # F-3 at intersection Ilchester Road & Font Road.

H.C. Station # 2945002 Elev. 460.41  
 3/4" Iron Rebar buried 10' from edge paving, 1/2" from intersection of Ilchester & Beechwood Roads

H.C. Station # 2945002  
 G & E # 258972  
 H.C. Sta. # 2945002

H.C. Sta. 2845008 Elev. 467.90'  
 Nail and flasher in one power pole two fence posts & one tree.

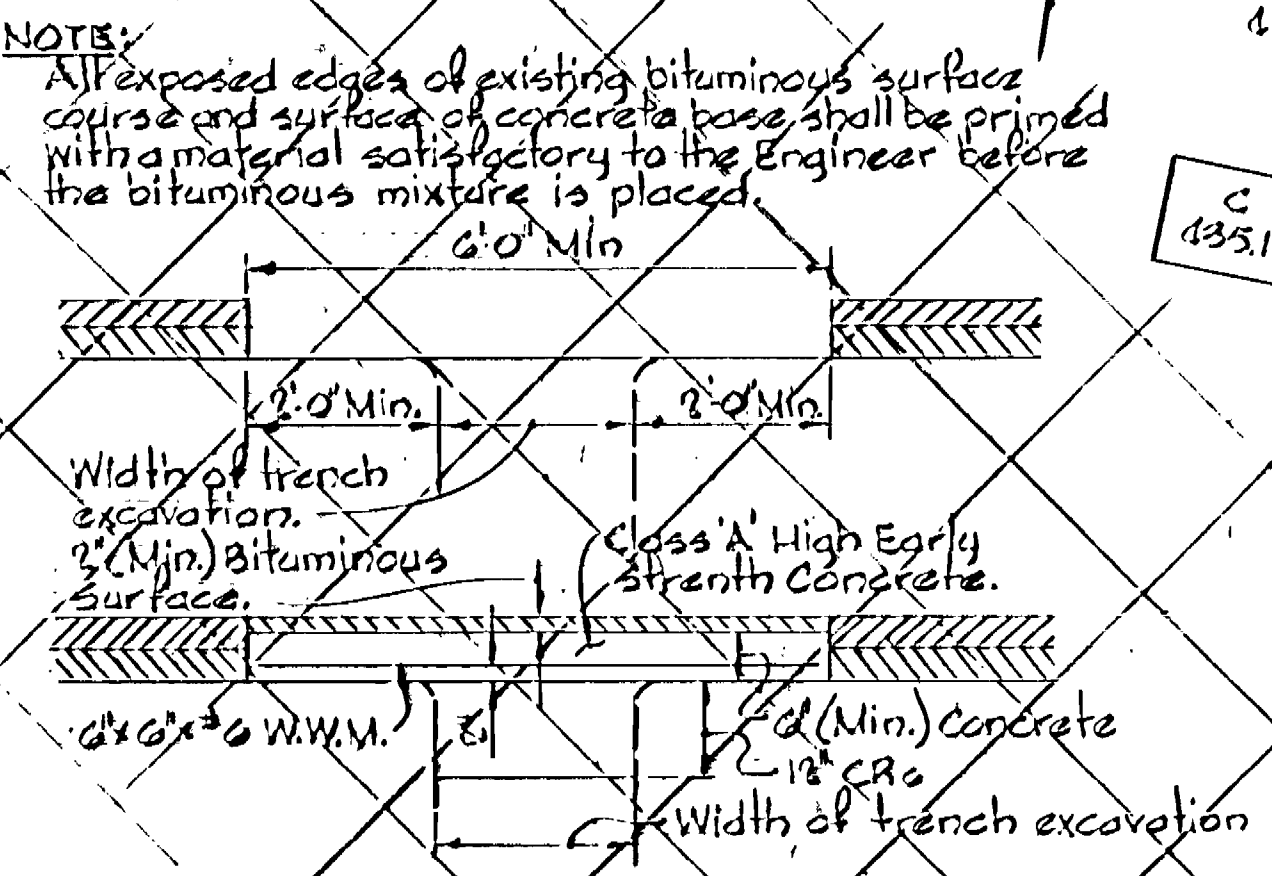
Notes:  
 Erosion Control Fabric shall be Poly Filter-X as manufactured by Carthage Mills Inc. Erosion Control Division, 24 N. 66th Street Cincinnati, Ohio, Laurel Erosion Control Cloth as manufactured by Laurel Plastics Inc., Madison, Maine or approved equal.

Rip Rap shall consist of dense rocks of random shapes and sizes resistant to the action of air and water and suitable for bank protection. All rocks shall weigh a minimum of 150 pounds.

Stream Bottom

Note:  
 Rip Rap shall be placed 6' each side & water or as shown.

**RIP RAP DETAIL**  
 Scale: 1/8" = 1'-0"



NO.	DATE	DESCRIPTION OF REVISION
1	10/1/75	Reduced scope of work
2	10/1/75	Added borings and changed paving replacement requirements.
3	10/1/75	Water Mains in Font Road and Font Avenue eliminated.



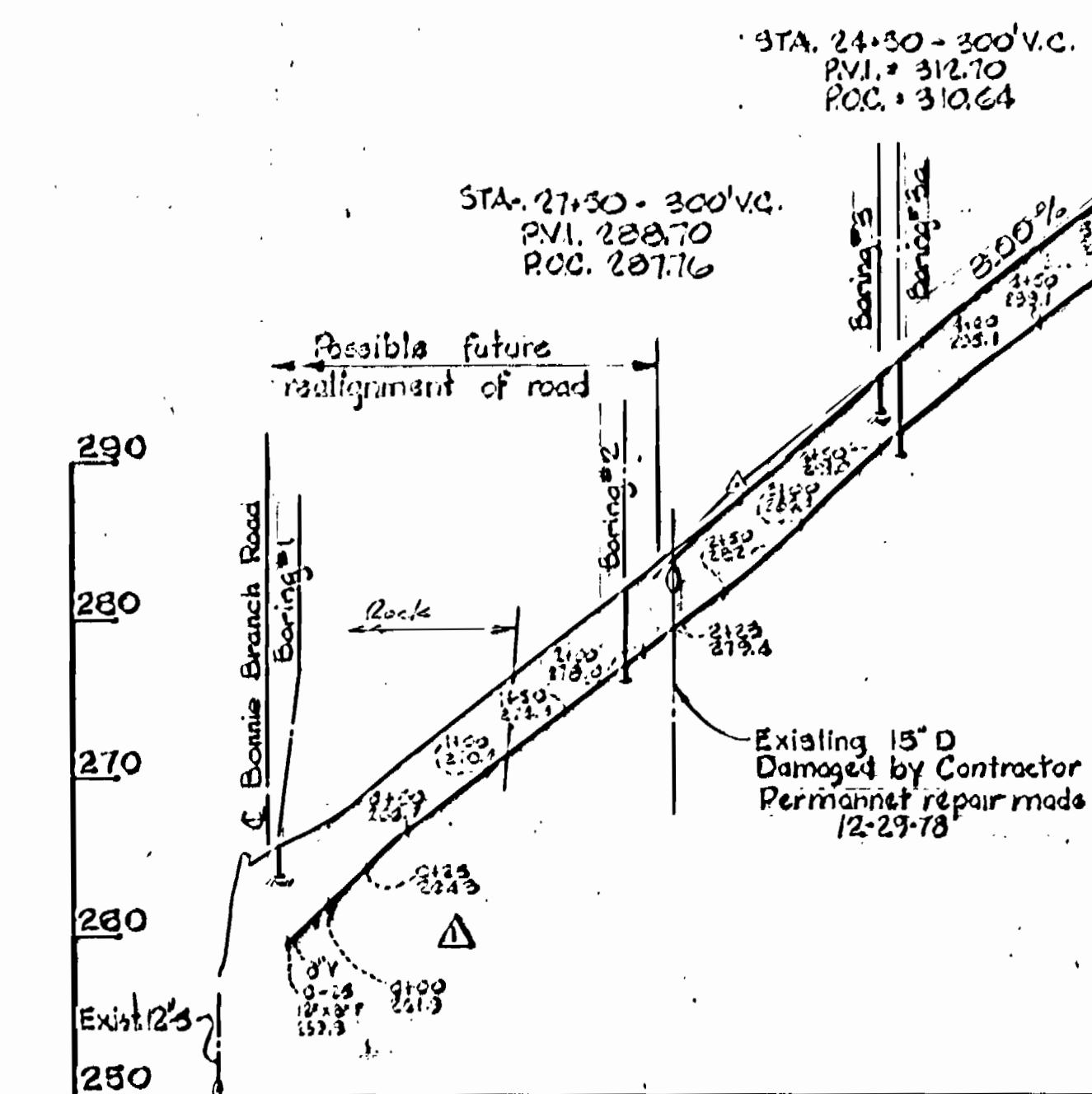
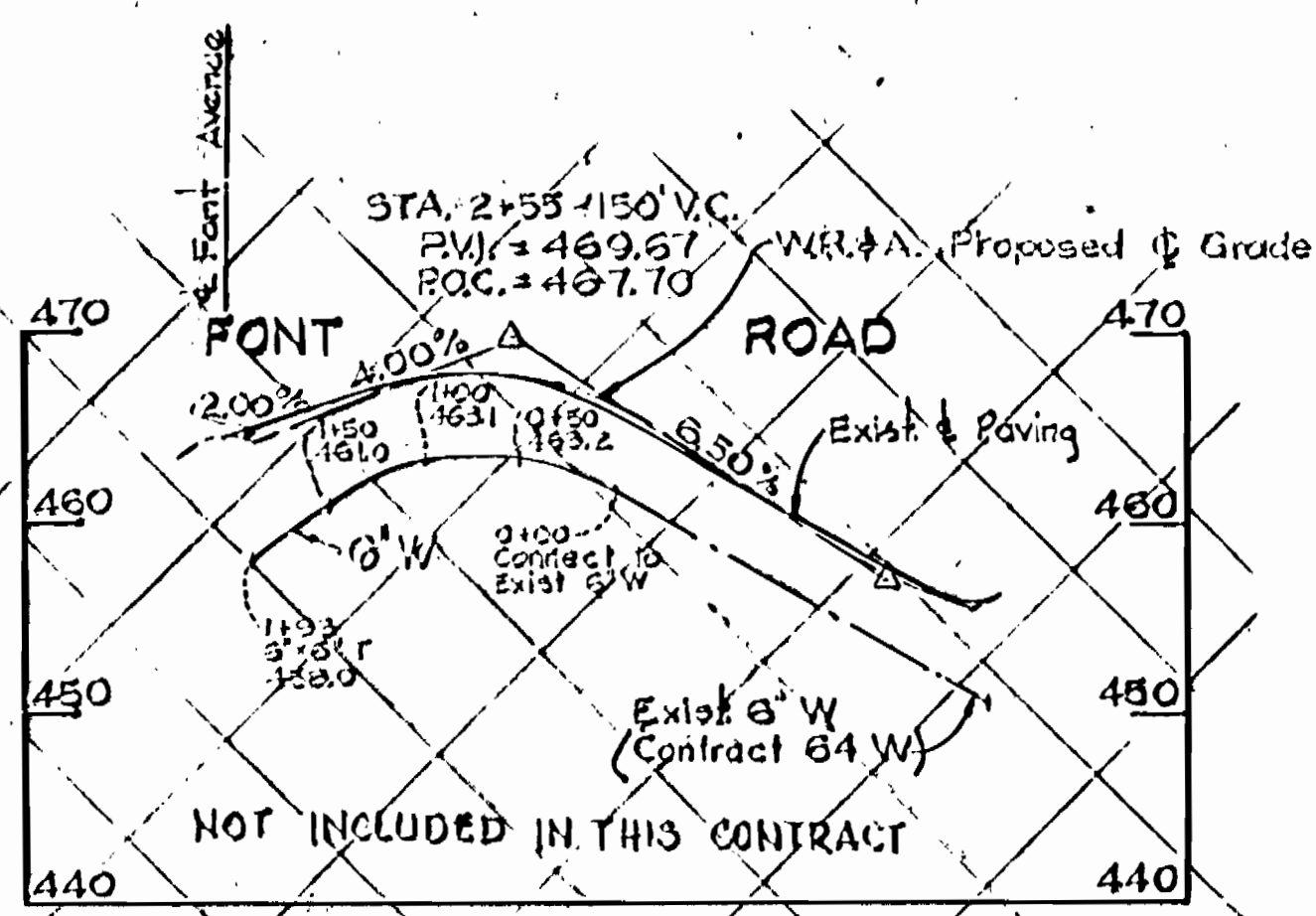
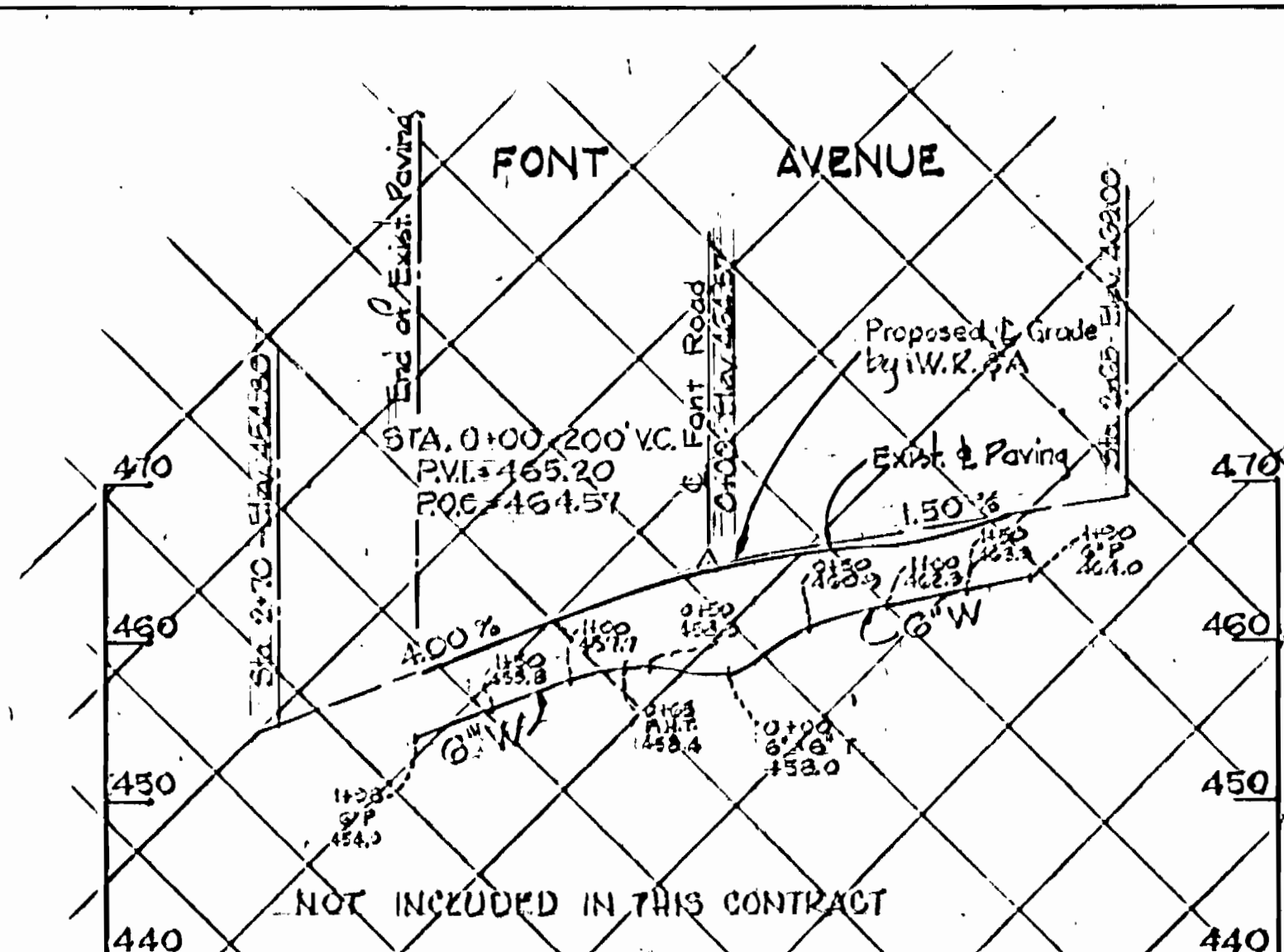
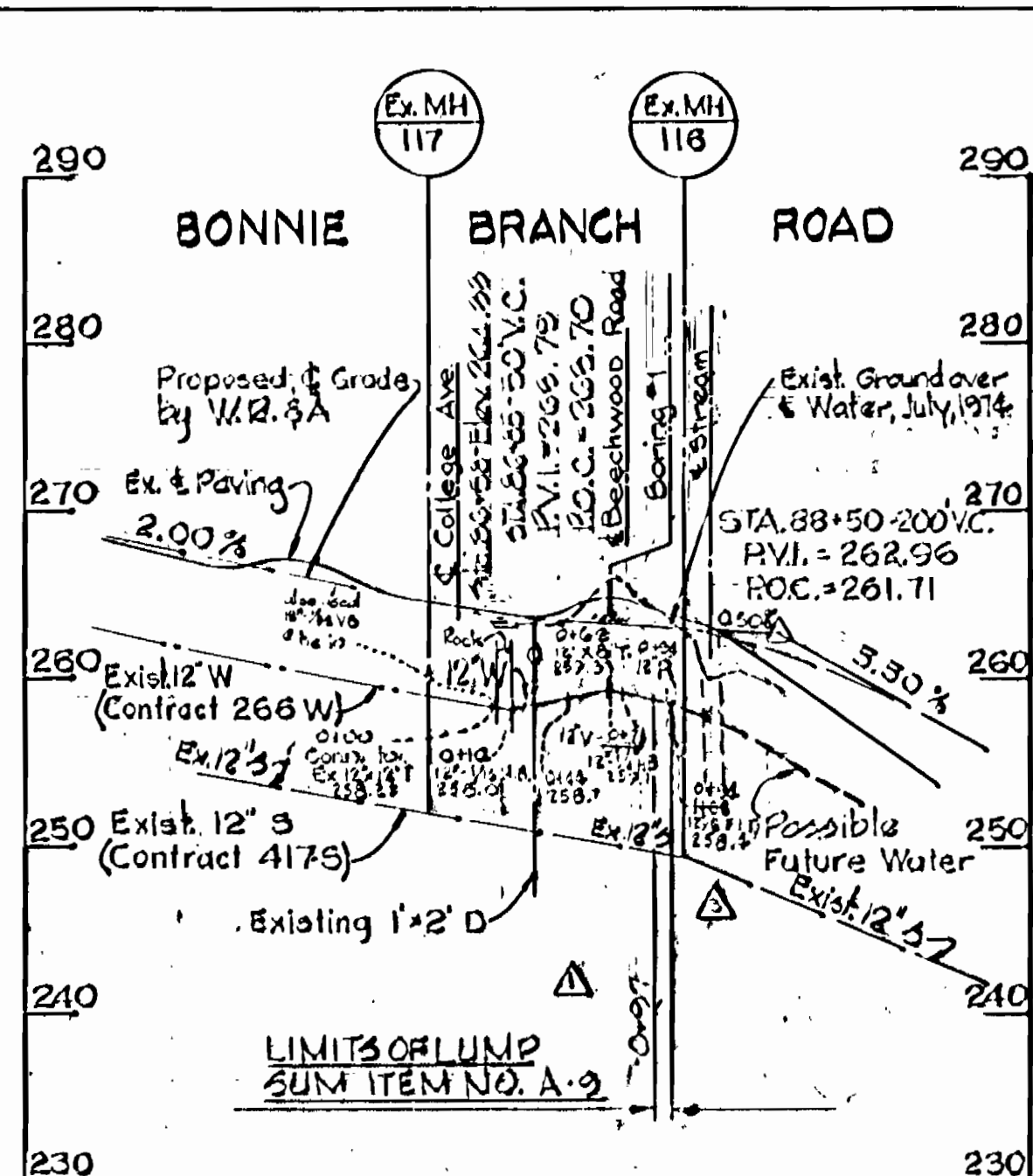
*Kenneth A. McLeod*

Beechwood Road  
 Project No. WM-8023  
 Contract No. 634-W

<b>WHITMAN, REQUARDT &amp; ASSOCIATES</b> ENGINEERS 1304 ST. PAUL ST. BALTIMORE, MARYLAND	<b>DEPARTMENT OF PUBLIC WORKS</b> HOWARD COUNTY, MARYLAND DATE: 1-6-75 <i>W. O. Fulbert</i> CHIEF BUREAU OF ENGINEERING	<b>CONTRACT NO. 634-W</b>	<b>PLAN AND DETAIL OF WATER MAINS</b>	<b>ELECTION DISTRICT ELKRIDGE No. 1</b>	<b>DRAWING NO. 2 OF 3</b>	<b>SCALE AS SHOWN</b>	3/2-11
					<b>NOV. 12, 1975</b>	<b>AS-BUILT</b>	

W. O. 6936-2

Nov. 12, 1975 AS-BUILT



NOT INCLUDED IN THIS CONTRACT

NOT INCLUDED IN THIS CONTRACT

LIMITS OF LUMP SUM ITEM NO. A-2

NOT INCLUDED IN THIS CONTRACT

BEECHWOOD ROAD

STA. 20+40-300 V.C., PVI = 323.58, POC = 324.89

STA. 10+30-150 V.C., PVI = 381.98, POC = 382.73

STA. 12+20-200 V.C., PVI = 374.38, POC = 373.88

8\"/>

Ground Water (Gravel) for sub-Grade 19+60 to 19+10

House service Electric & Tel. Cable damaged while Exc. For P.H.

Gravel for sub-Grade 8+51 to 8+66

STA. 24+50-300 V.C., PVI = 312.70, POC = 310.64

STA. 27+50-300 V.C., PVI = 288.70, POC = 287.16

No.	DATE	DESCRIPTION OF REVISION
1	12-29-78	Reduced scope of work
2		Added borings and changed paving replacement requirements.
3		Water Mains in Font Road and Font Avenue eliminated.
4		F.H. added - Bonnie Branch Road.
5		Revised Water Main Alignment at Beechwood & Bonnie Branch Road



*Kenneth J. McLeod*

Beechwood Rd. Project No. W-4-8043 Contract No. 634-W

WHITMAN, REQUARDT & ASSOCIATES ENGINEERS 1304 ST. PAUL ST. BALTIMORE, MARYLAND

DEPARTMENT OF PUBLIC WORKS HOWARD COUNTY, MARYLAND *eu o Filbert* CHIEF BUREAU OF ENGINEERING

CONTRACT NO. 634-W

PROFILES OF WATER MAINS

ELECTION DISTRICT ELKRIDGE No. 1

DRAWING NO. 3 OF 3 SCALE H-1=100' V-1=10'