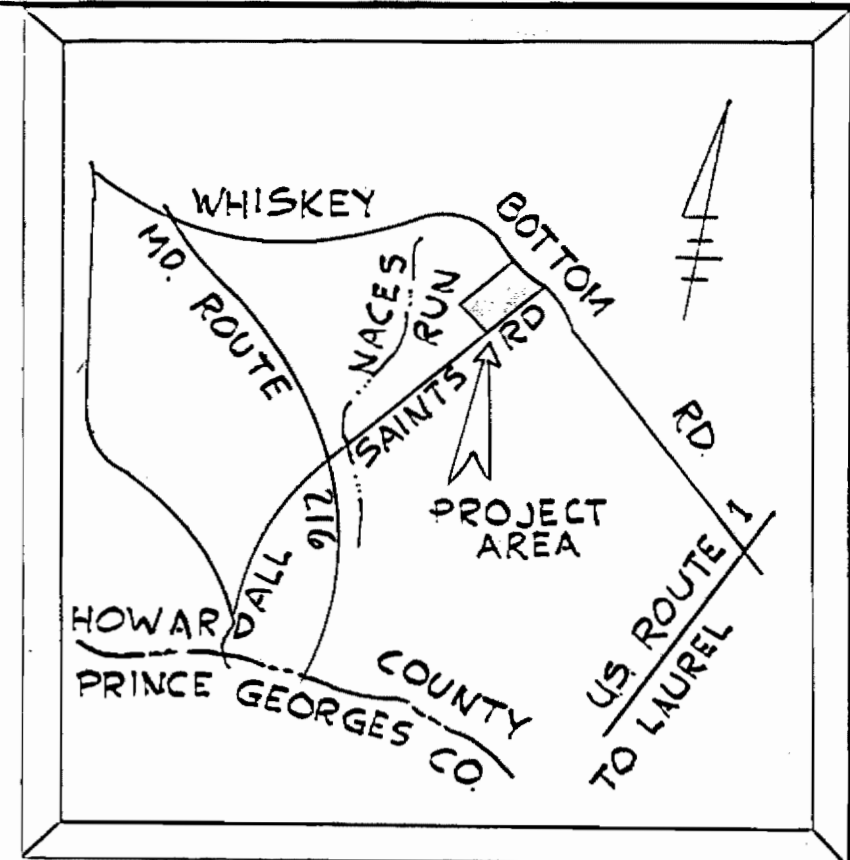


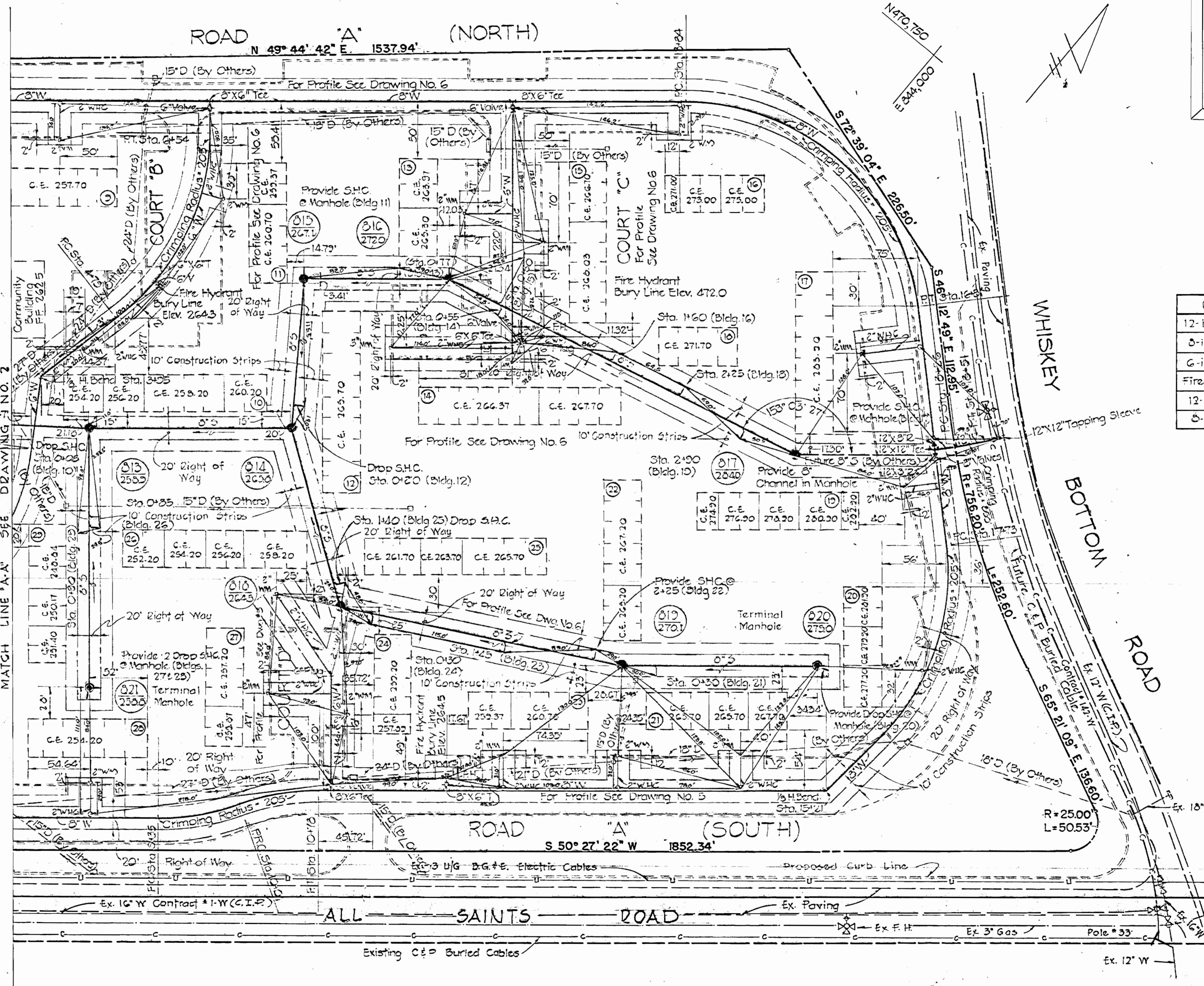
GENERAL NOTES

1. Approximate locations of existing utilities are shown. The Contractor shall take all necessary precautions to protect the existing utilities and to maintain uninterrupted service. Any damage incurred due to the Contractor's operations shall be repaired immediately at the Contractor's expense.
2. All pipe elevations shown are invert elevations.
3. The Contractor shall locate existing utilities well in advance of construction activities.
4. See standard details bound in specifications.
5. Clear all utilities by a minimum of 6 inches. Clear all utility poles by 2'-0" minimum or tunnel as required. Any costs incurred to the Contractor for tunneling or bracing poles shall be included in unit prices bid for excavation.
6. The Contractor shall provide a pipe joint in all sewer mains within 2'-0" of exterior manhole walls.
7. All manholes shall be 4'-0" in diameter, unless otherwise noted.
8. Buttress or anchor all water main fittings with concrete.
9. All water mains to have a minimum of 3.5' cover unless otherwise noted.
10. All fire hydrants shall be strapped to the tee and shall be buttressed with concrete in accordance with standard details. Cost of strapping fire hydrants and valves to be included in the unit price bid for furnishing and installing fire hydrants.
11. Bury line elevations on fire hydrants shall be set to the elevations shown on the plan.
12. All horizontal and vertical controls are based on the Maryland State Grid System.
13. The size and location of water house connections and water meters shall be of the size shown on plan.
14. Cost incurred by the contractor for clearing the sewer R/W from MH #806 to exist. MH #1917 shall be included in prices bid for excavation and backfill of sewer mains.



VICINITY MAP
SCALE: 1" = 2000'

| QUANTITIES | |
|---------------|------------|
| 12-inch Water | 801 L.F. |
| 8-inch Water | 3,673 L.F. |
| 6-inch Water | 1,516 L.F. |
| Fire Hydrants | 7 Ea. |
| 12-inch Sewer | 885 L.F. |
| 8-inch Sewer | 4,120 L.F. |



WS 627 -W&S/



PURDUM & JESCHKE
ENGINEERS
1023 N. CALVERT ST.
BALTIMORE, MARYLAND

DEPARTMENT OF PUBLIC WORKS
HOWARD COUNTY, MARYLAND
3-26-74
DATE

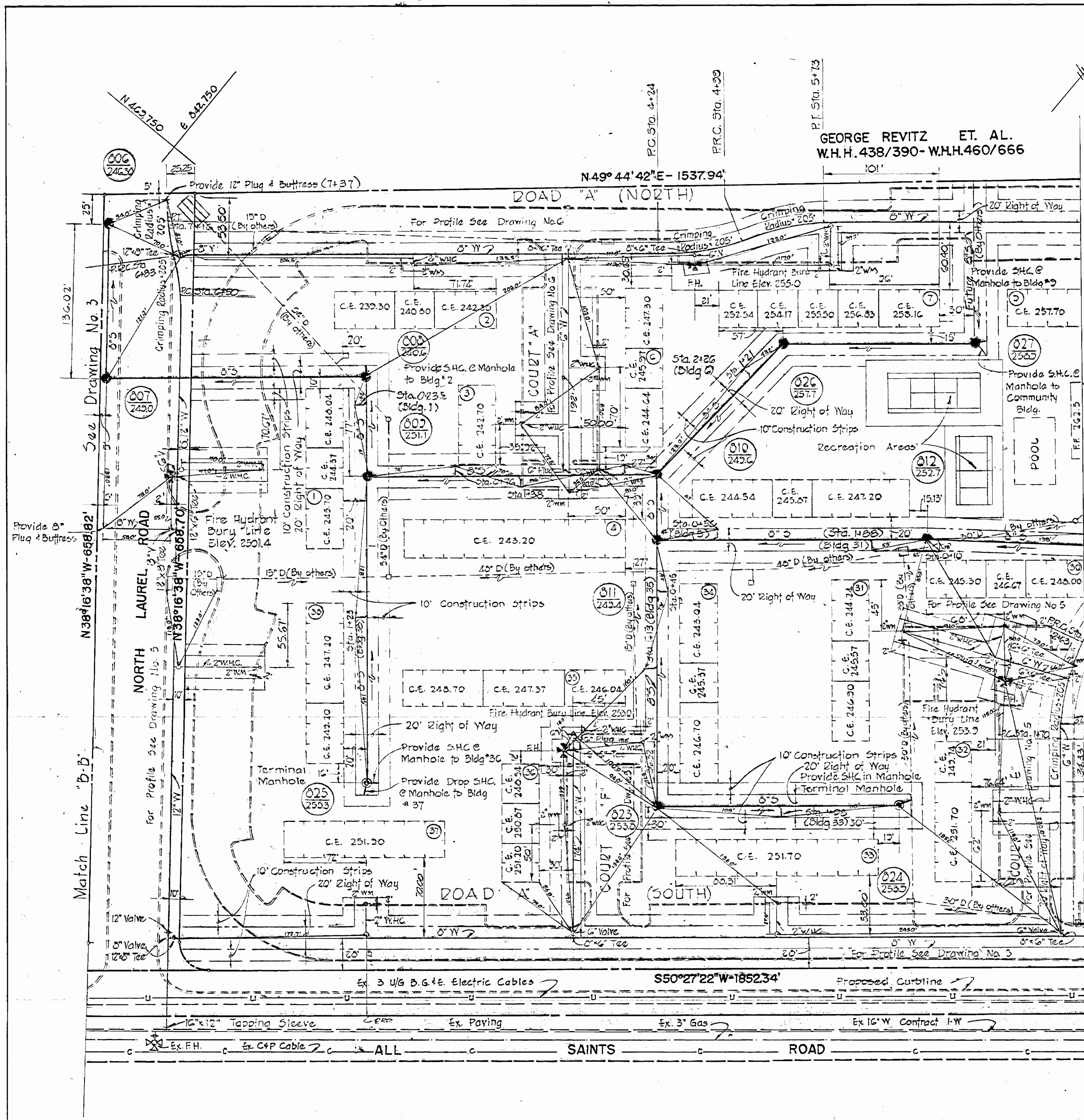
CONTRACT NO. 2627-D-W&S

PLAN OF
WATER AND SEWER MAINS

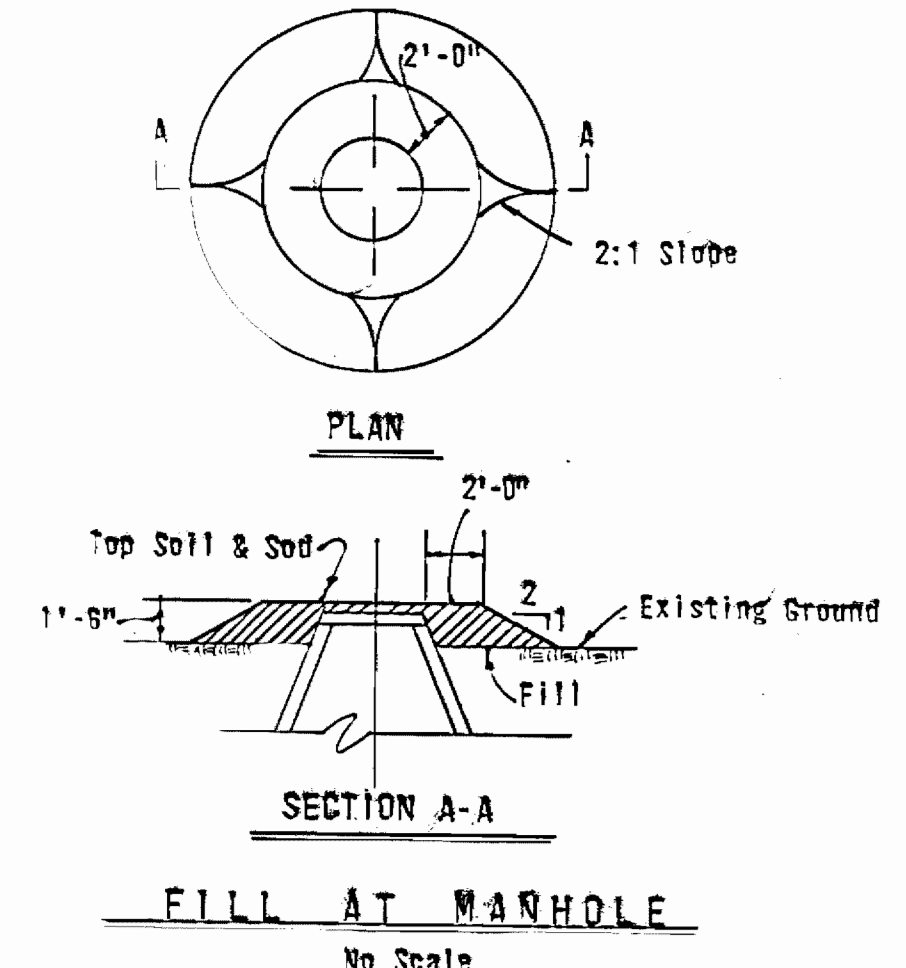
NOW CANTERBURY-RIDING CONDOMINIUM
TYLER GARDENS PHASE 1
ELECTION DISTRICT NO. 6
HOWARD COUNTY, MARYLAND

| | | |
|--------------------|----------------|--|
| DRAWING NO. 1 OF 6 | SCALE 1" = 50' | Designed: T.A.F. Drafted: R.E.P. Checked: T.A.F. |
|--------------------|----------------|--|

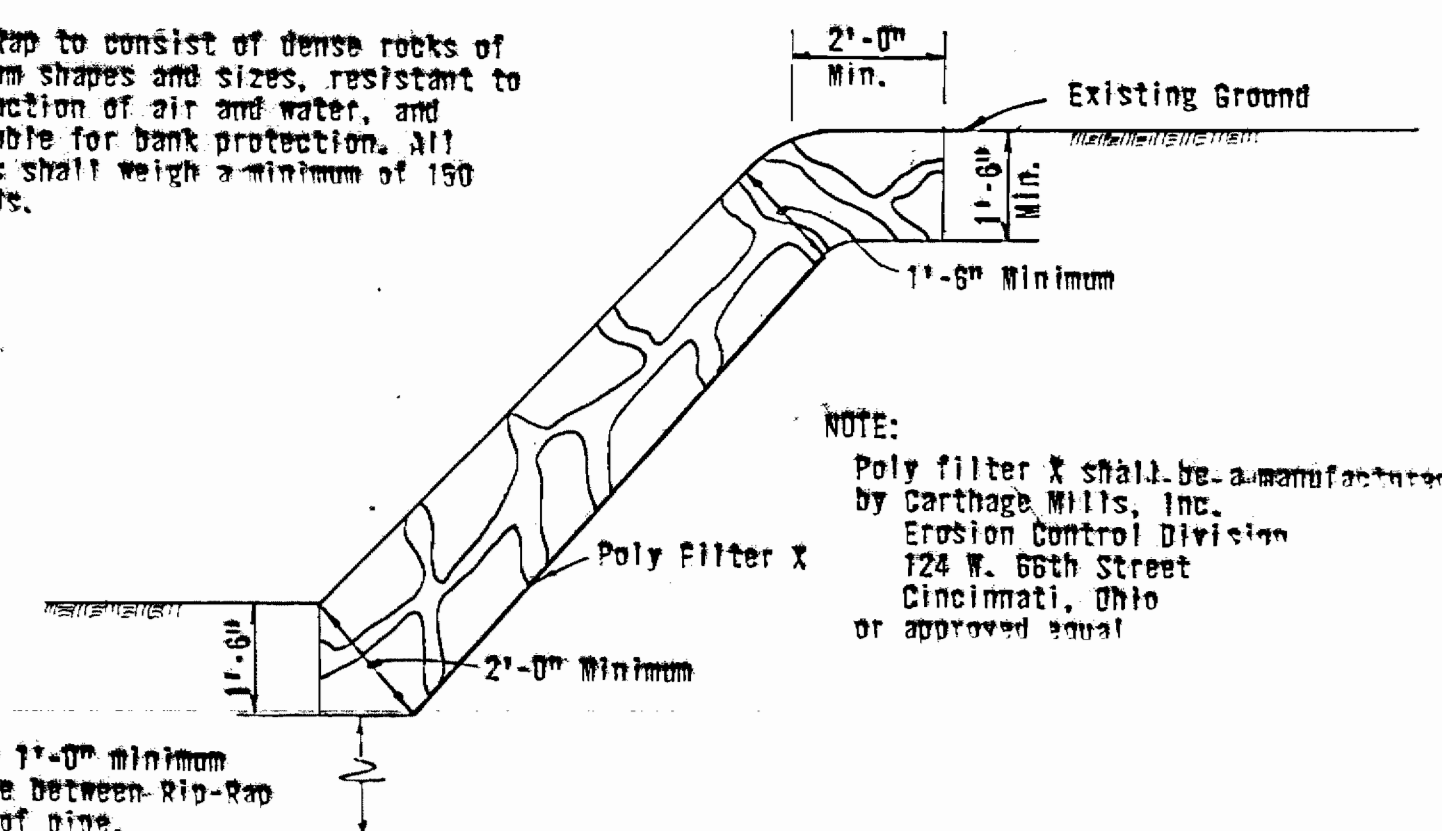
WS 627 - W&S/2



GEORGE REVITZ ET. AL.
 W.H.H. 438/390- W.H.H.460/666

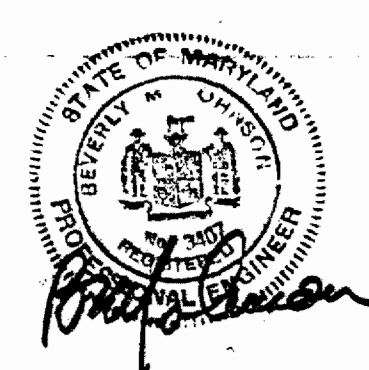


NOTE:
 Rip-Rap to consist of dense rocks of random shapes and sizes, resistant to the action of air and water, and suitable for bank protection. All rocks shall weigh a minimum of 150 pounds.



NOTE:
 Poly filter X shall be a-manufactured by Carthage Mills, Inc. Erosion Control Division 124 W. 66th Street Cincinnati, Ohio or approved equal

RIP-RAP DETAIL
 Scale: 3/8" = 1'-0"



CONTRACT NO. 2627-D-W & S
 TYLER GARDENS PHASE I
 WATER AND SEWER EXTENSIONS

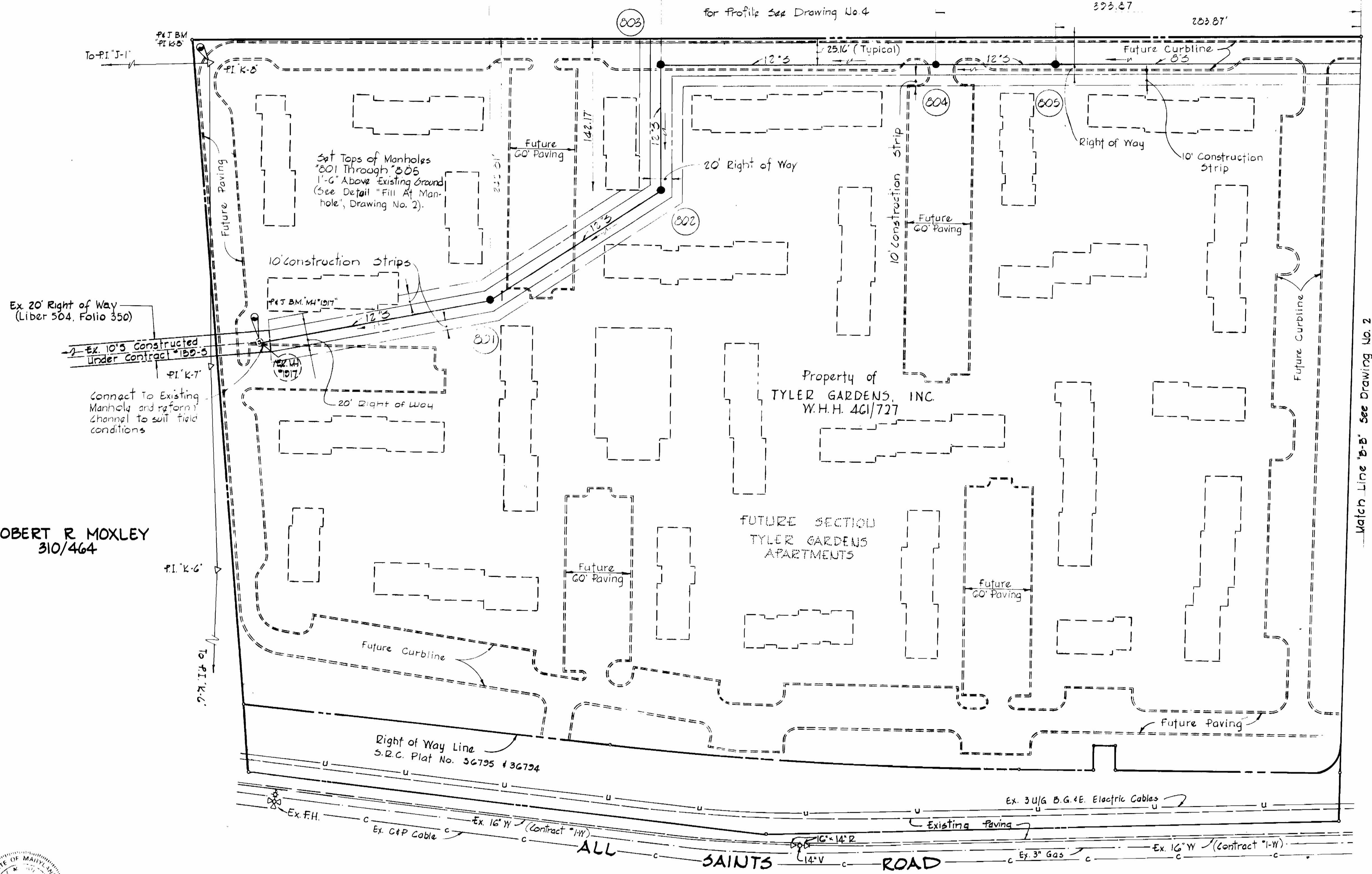
| | | | | | |
|---|--|--|---|---|---|
| PURDUM & JESCHKE ENGINEERS 1023 N. CALVERT ST. BALTIMORE, MARYLAND | DEPARTMENT OF PUBLIC WORKS HOWARD COUNTY, MARYLAND 8-26-74 DATE | CONTRACT NO. 2627-D-W & S CHIEF BUREAU OF ENGINEERING | PLAN AND DETAILS WATER AND SEWER MAINS | TYLER GARDENS PHASE I ELECTION DISTRICT NO. 6 HOWARD COUNTY, MARYLAND | DRAWING NO. 2 OF 6 SCALE 1" = 50' DESIGNED: TAF DRAFTED: REP CHECKED: TAF |
|---|--|--|---|---|---|

BENCH MARKS
 P & J B.M. "P.I. K-8" Elev. 240.51
 P & J B.M. Manhole #1917 Elev. 218.27

Property of
 GEORGE REVITZ, et al.
 433/330
 460/666

E 841.750
 N 463.750

E 842.750
 N 463.750



Ex 20' Right of Way (Liber 504, Folio 350)

Ex 10' S Constructed Under Contract "B-B-5"

PI K-7

Connect to Existing Manhole and reform channel to suit field conditions

ROBERT R. MOXLEY
 310/464



Match Line "B-B" See Drawing No. 2

N 463.750
 E 843.750

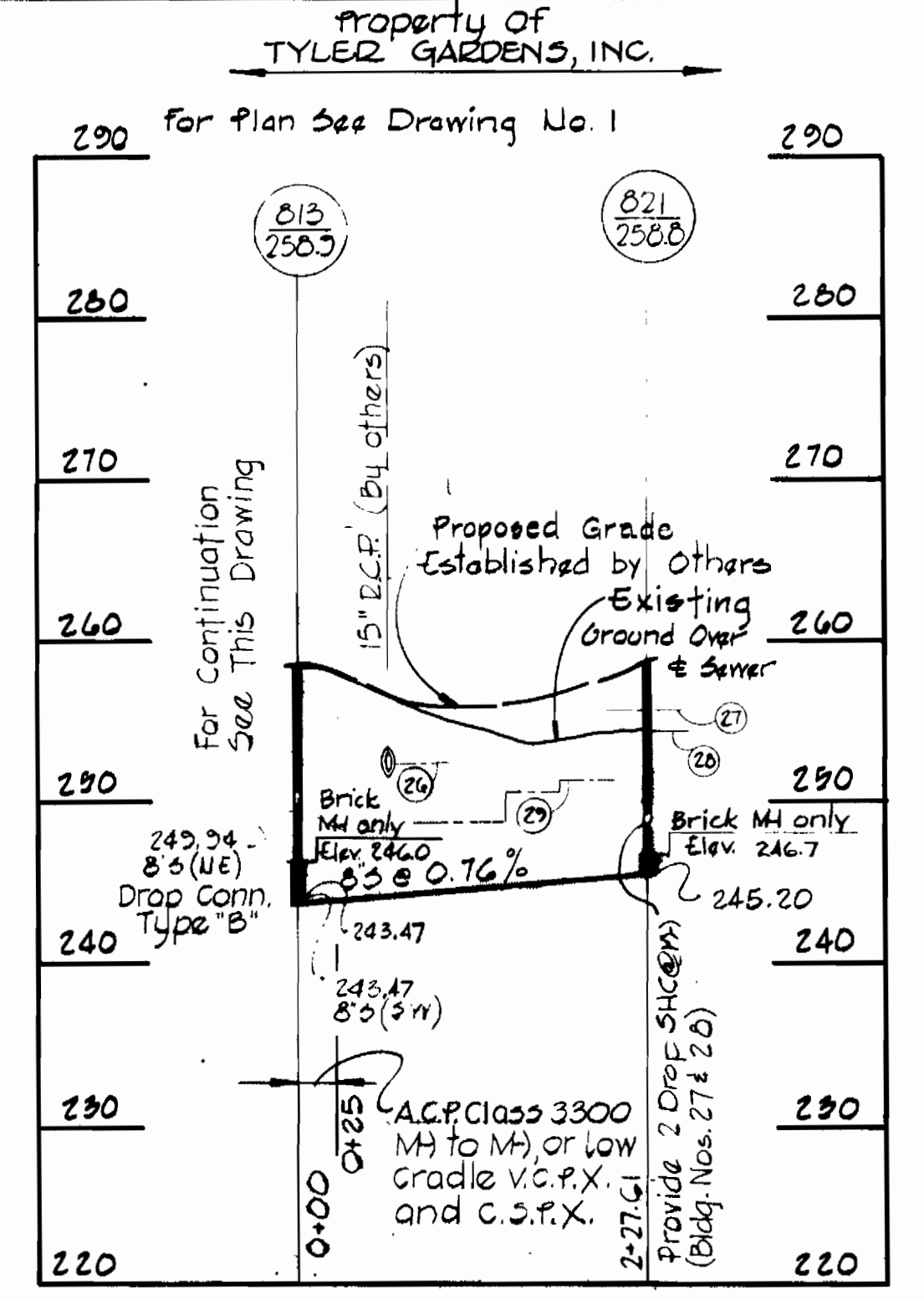
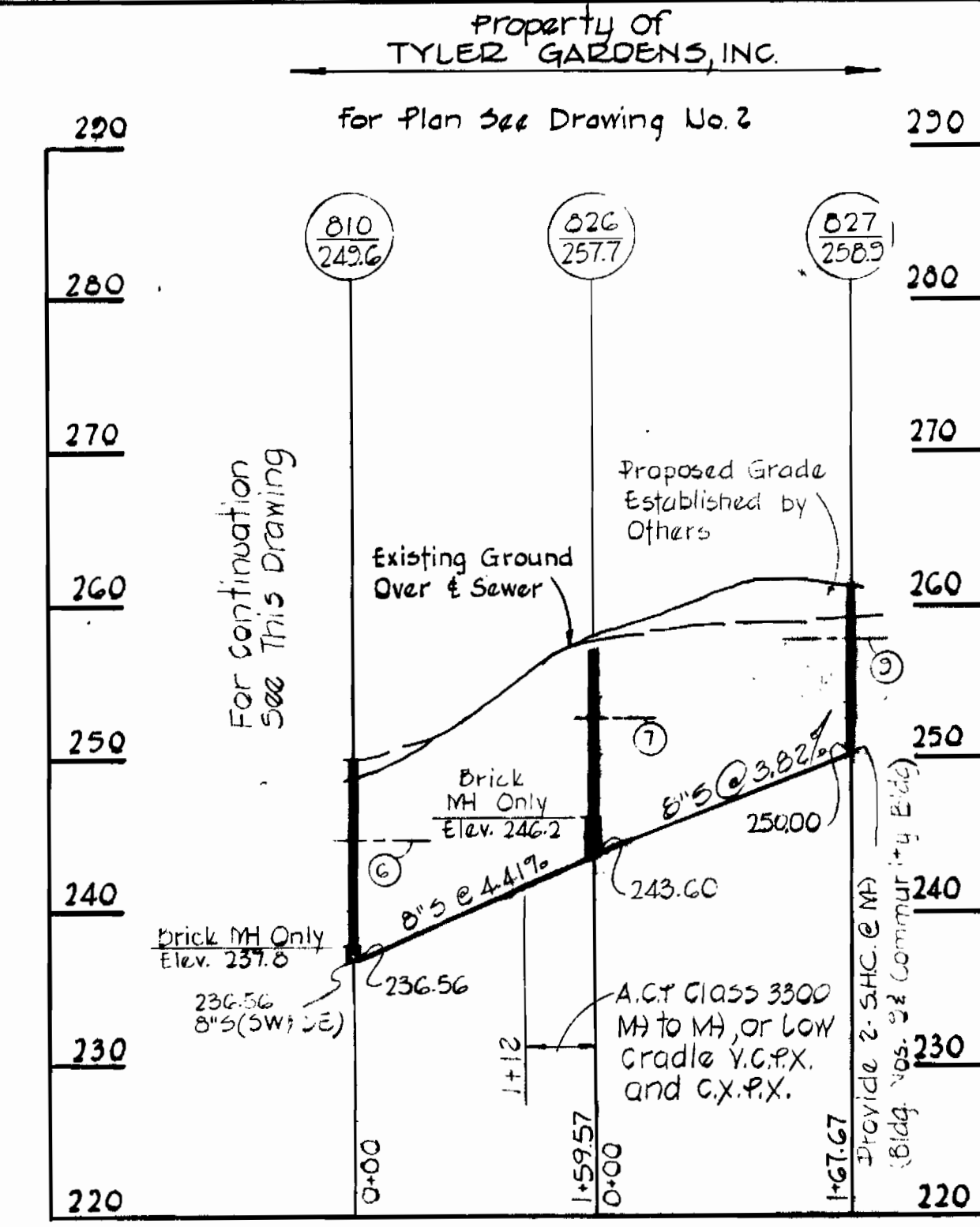
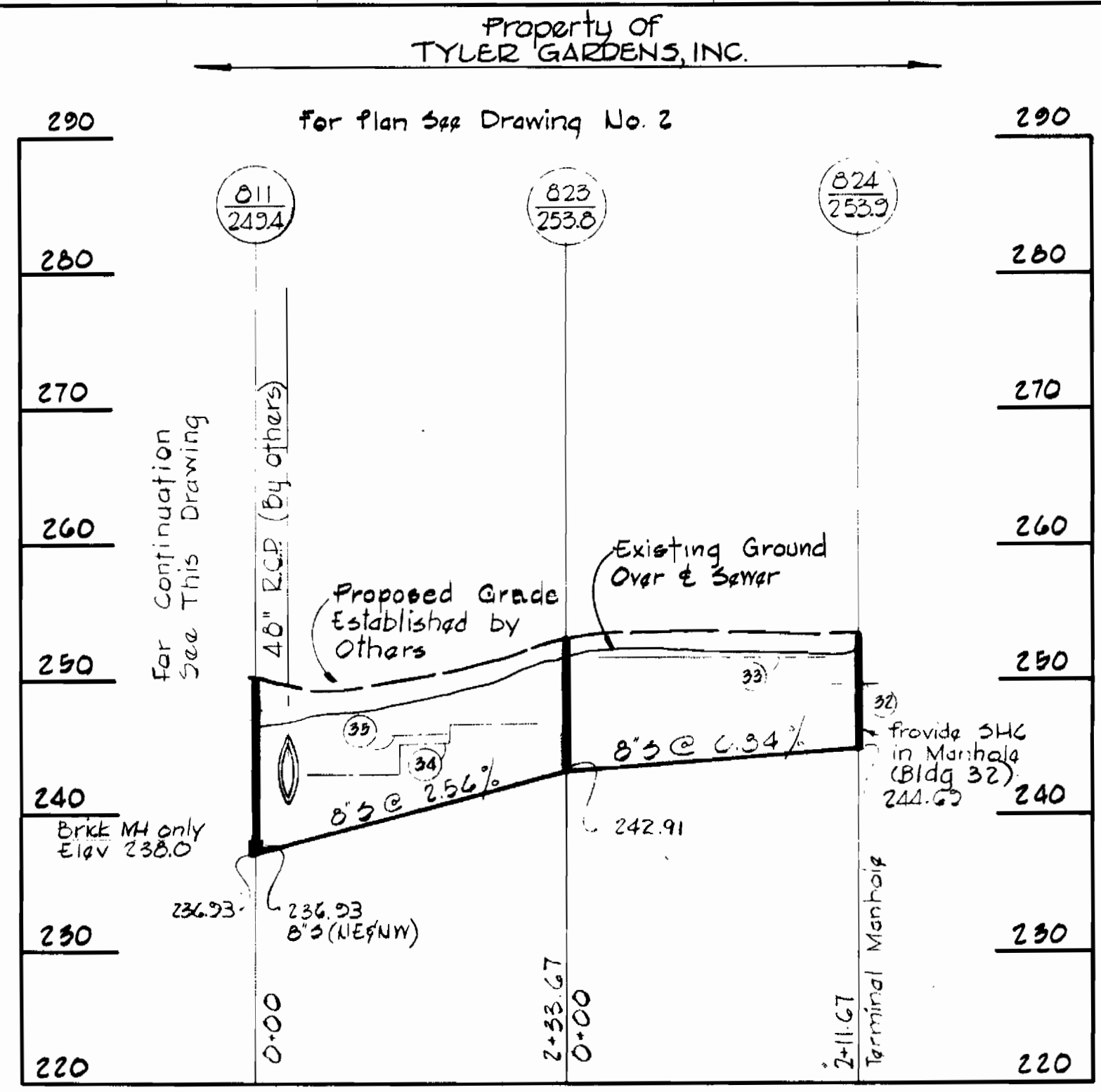
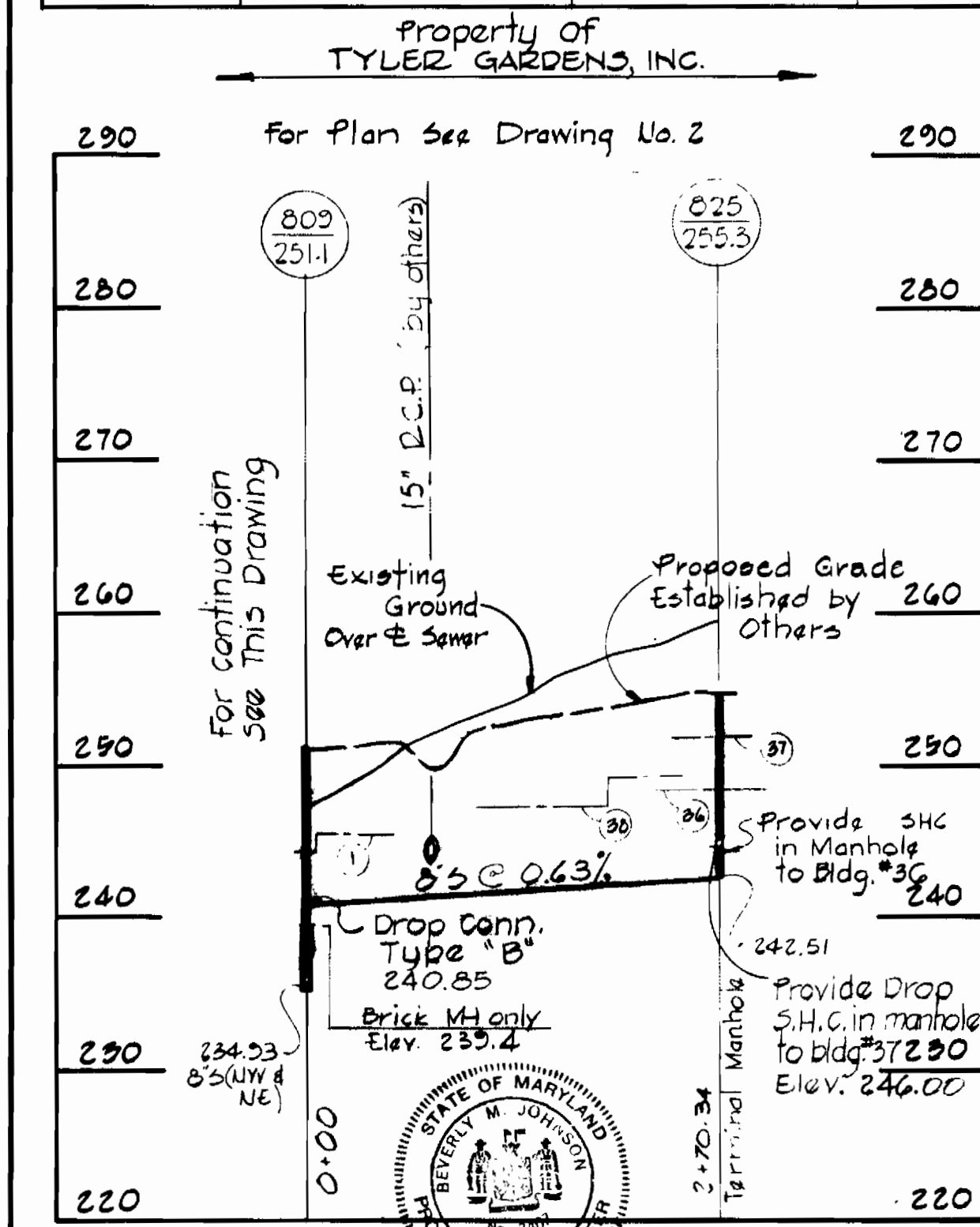
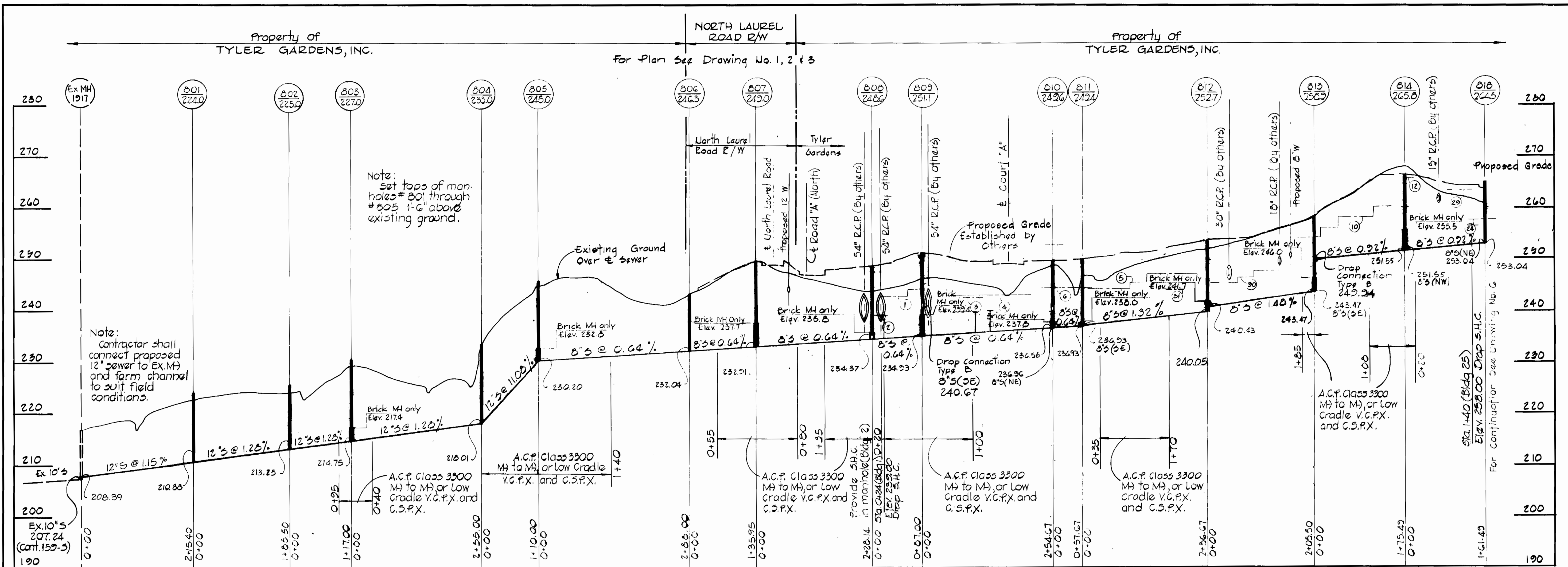
CONTRACT NO. 2627-D-W & S
 TYLER GARDENS PHASE I
 WATER & SEWER EXTENSIONS

| | | | | | | | |
|--|---|---------------------------|------------------------|---|----------------------------|-------------------|--|
| PURDUM & JESCHKE ENGINEERS 1023 N. CALVERT ST. BALTIMORE, MARYLAND | DEPARTMENT OF PUBLIC WORKS HOWARD COUNTY, MARYLAND 8-26-74 DATE | CONTRACT NO. 2627-D-W & S | PLAN OF SEWER MAINS | TYLER GARDENS PHASE I ELECTION DISTRICT NO. 6 HOWARD COUNTY, MARYLAND | DRAWING NO. 23 OF 26 | SCALE 1" = 50' | Designed: T.A.F. Drafted: L.H.C. Checked: T.A.F. |
|--|---|---------------------------|------------------------|---|----------------------------|-------------------|--|

W.O. 5193

AS-BUILT MAY 20, 1975

ME BALTIMORE 17048 PHOENIX 81644
 AUGUST 15, 1974



WS 627 -W&S/H

PURDUM & JESCHKE
ENGINEERS
1023 N. CALVERT ST.
BALTIMORE, MARYLAND

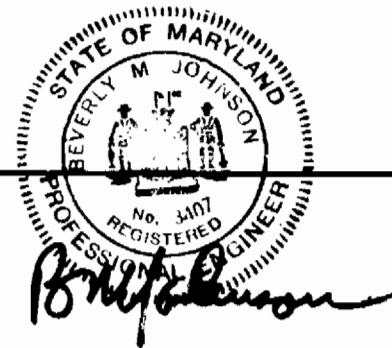
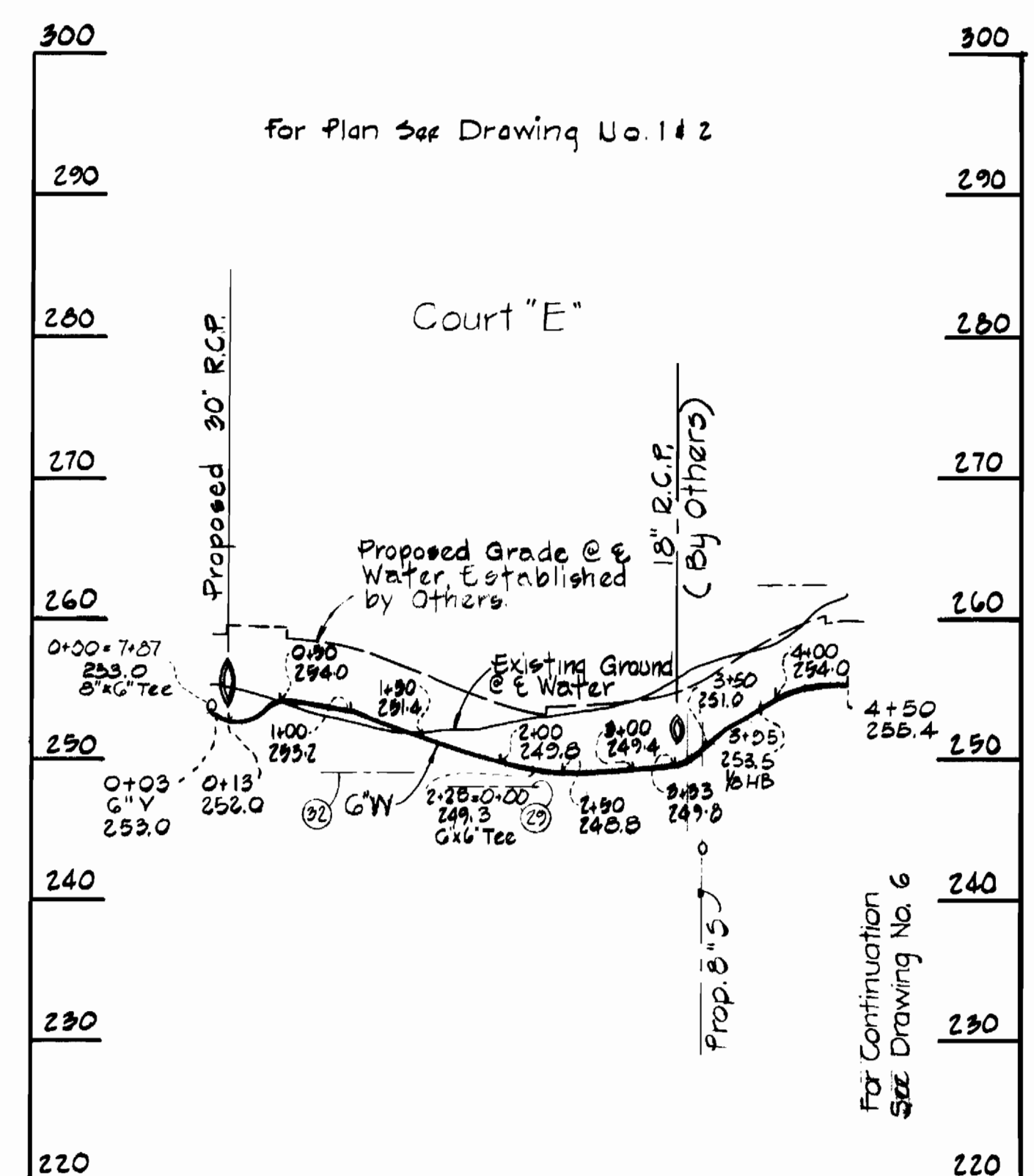
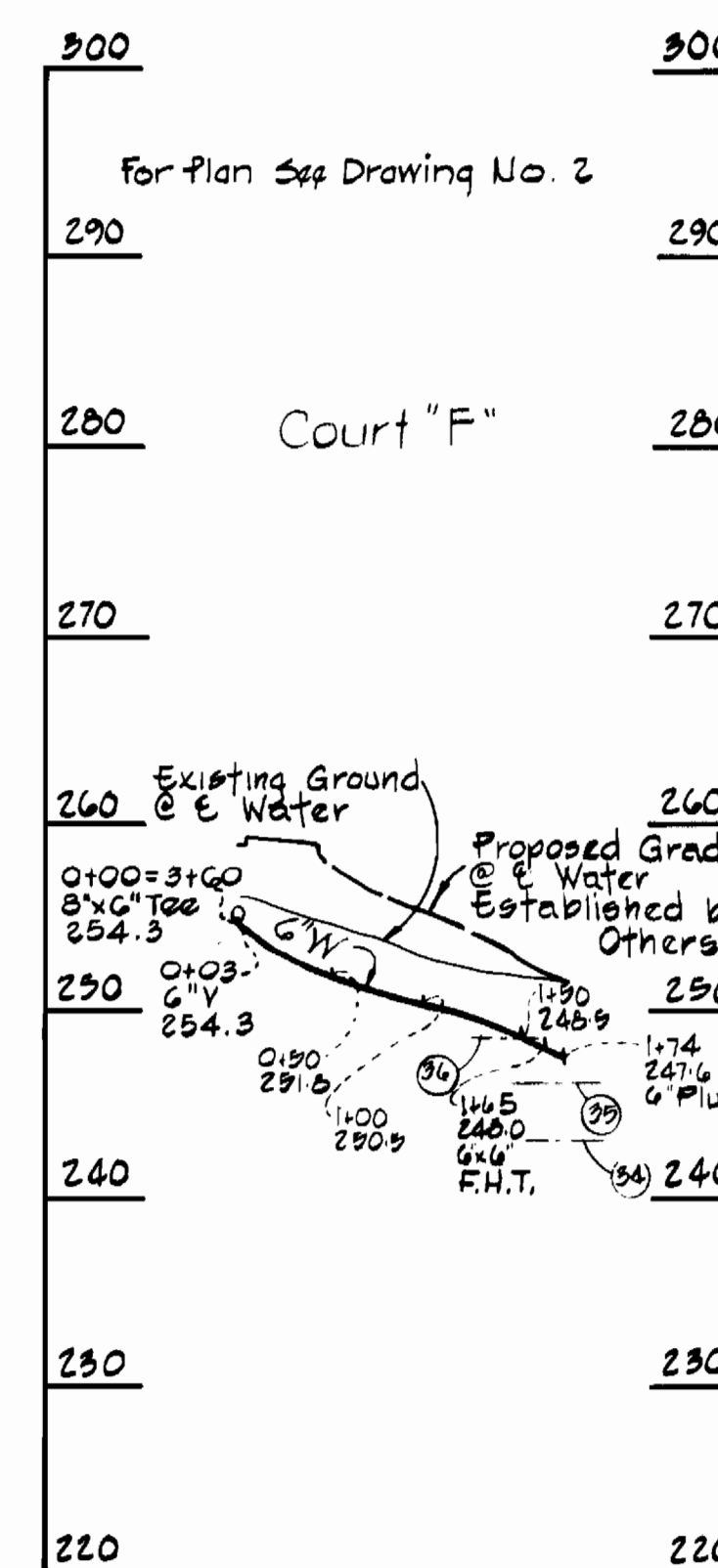
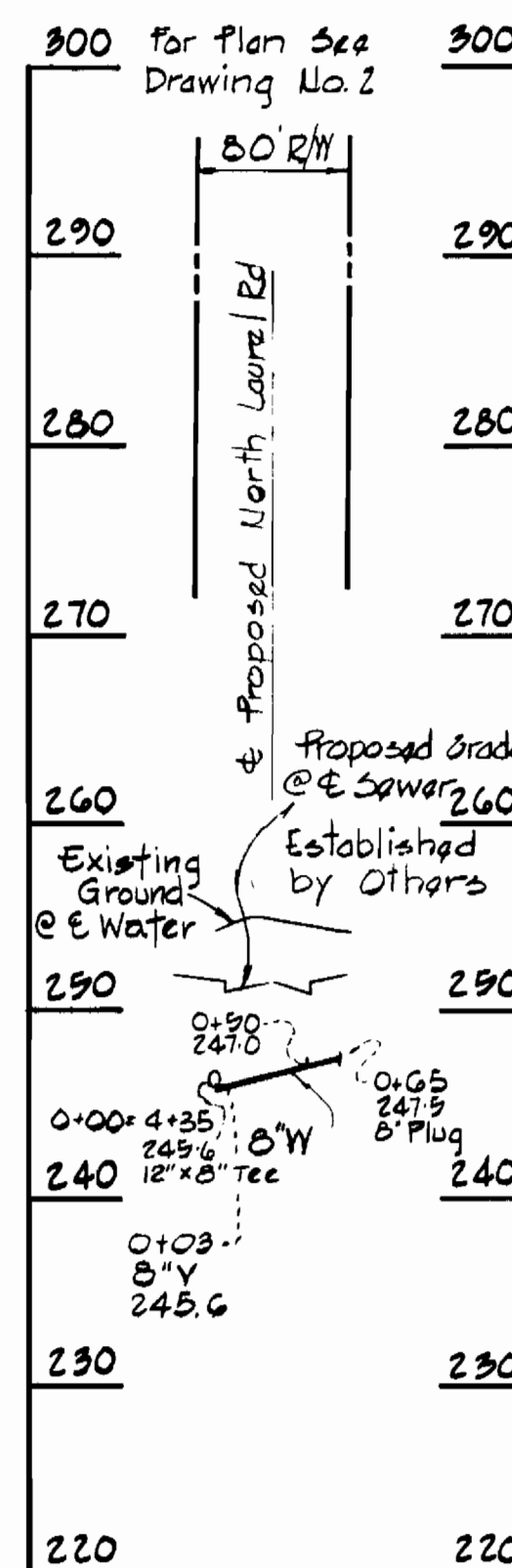
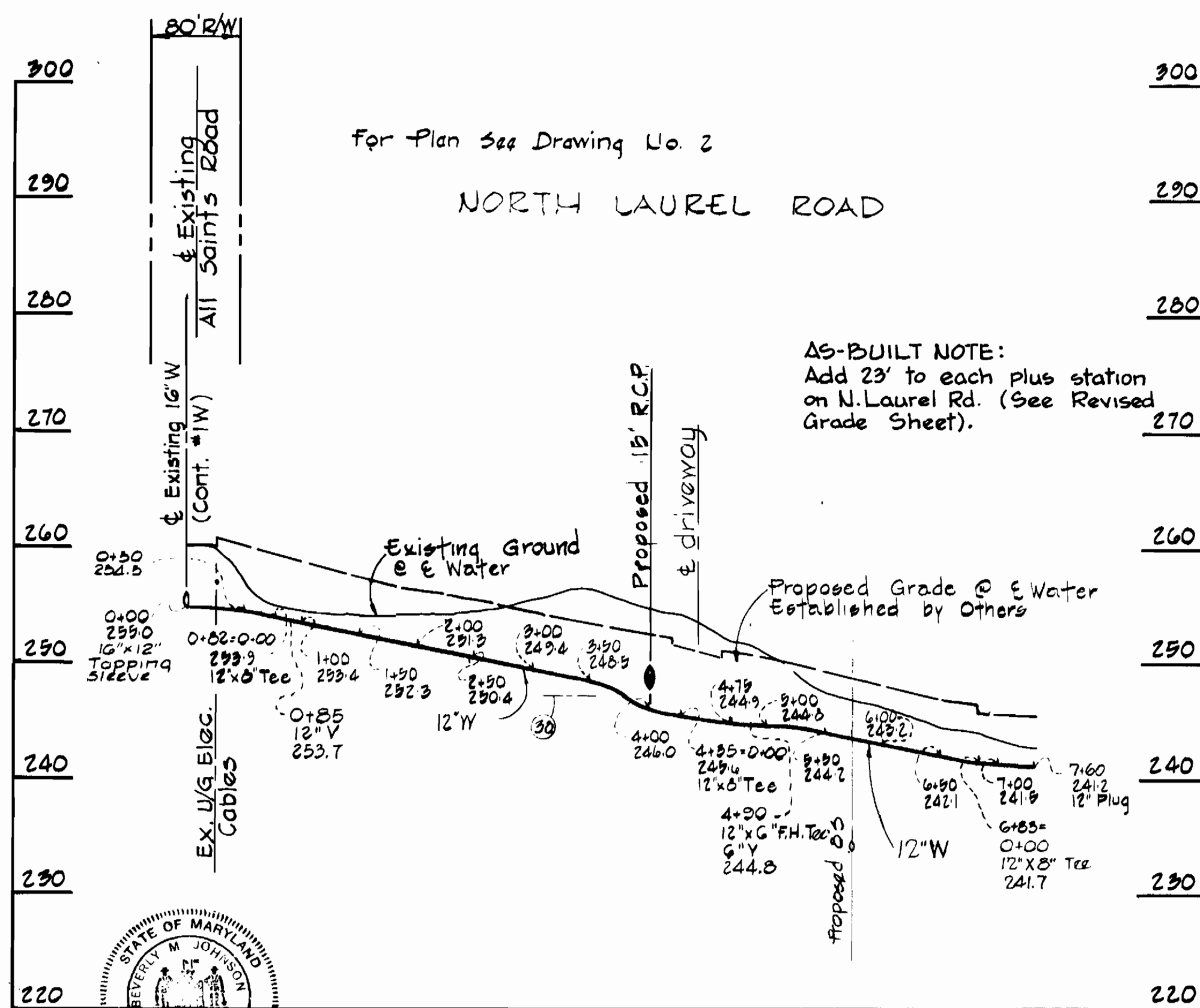
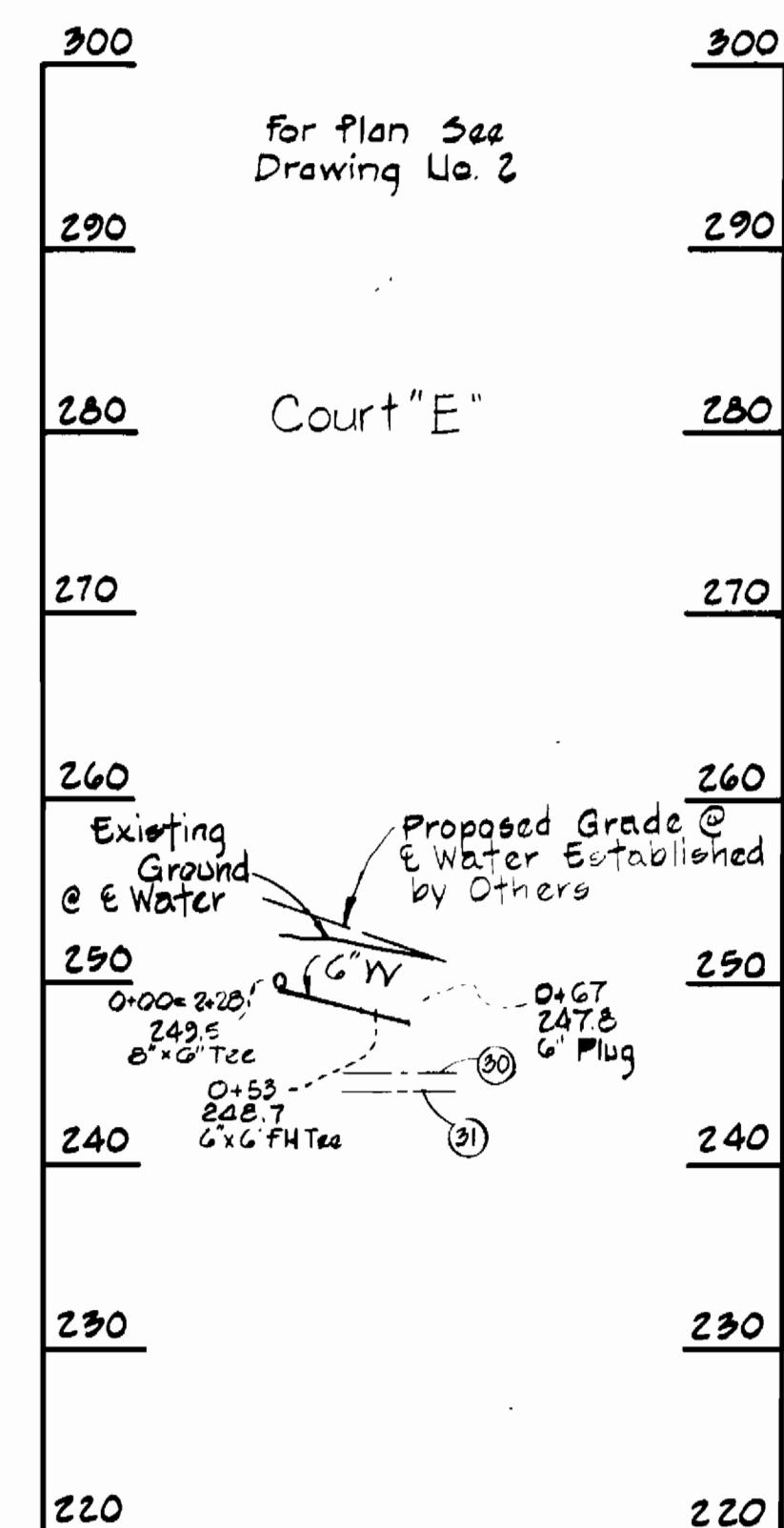
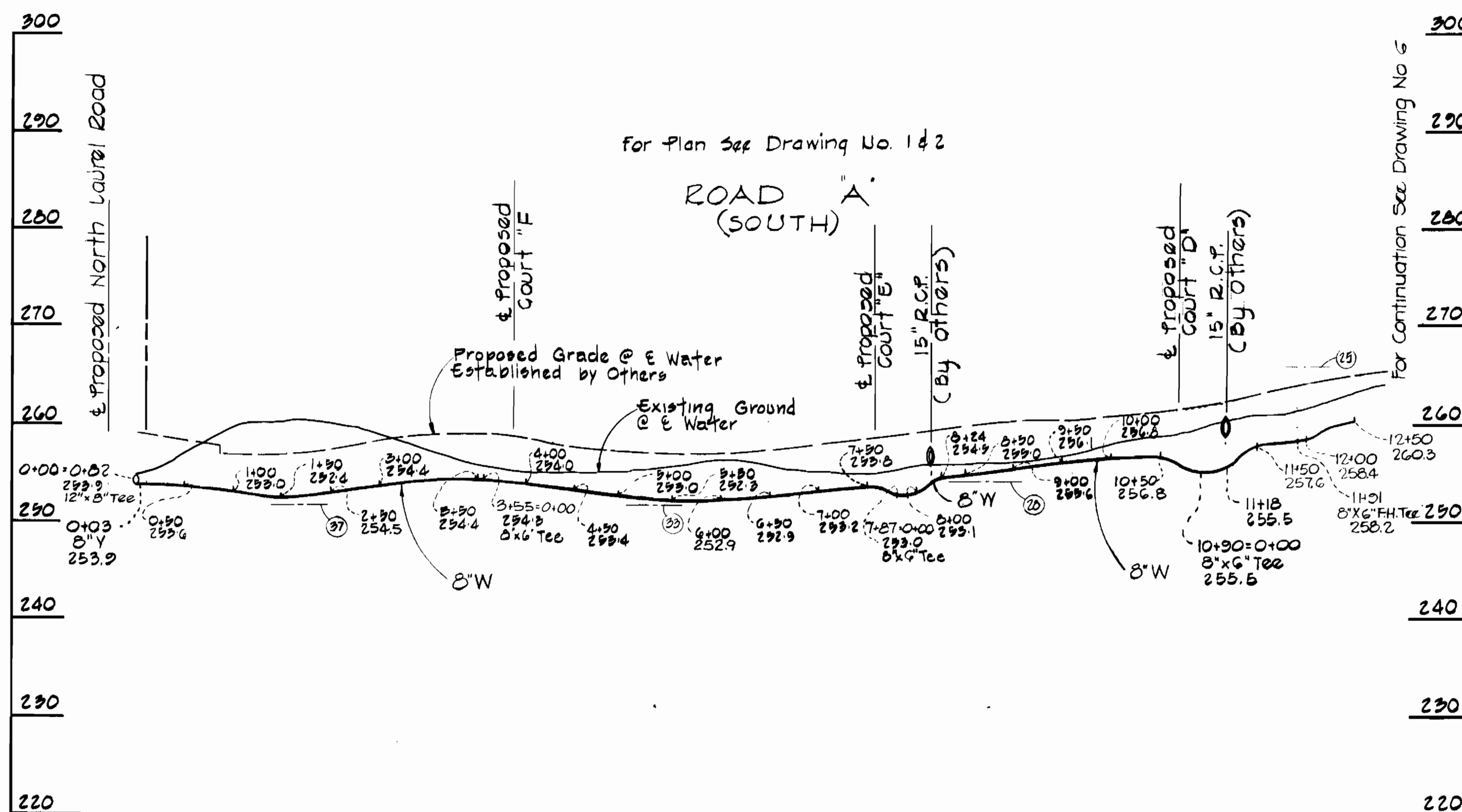
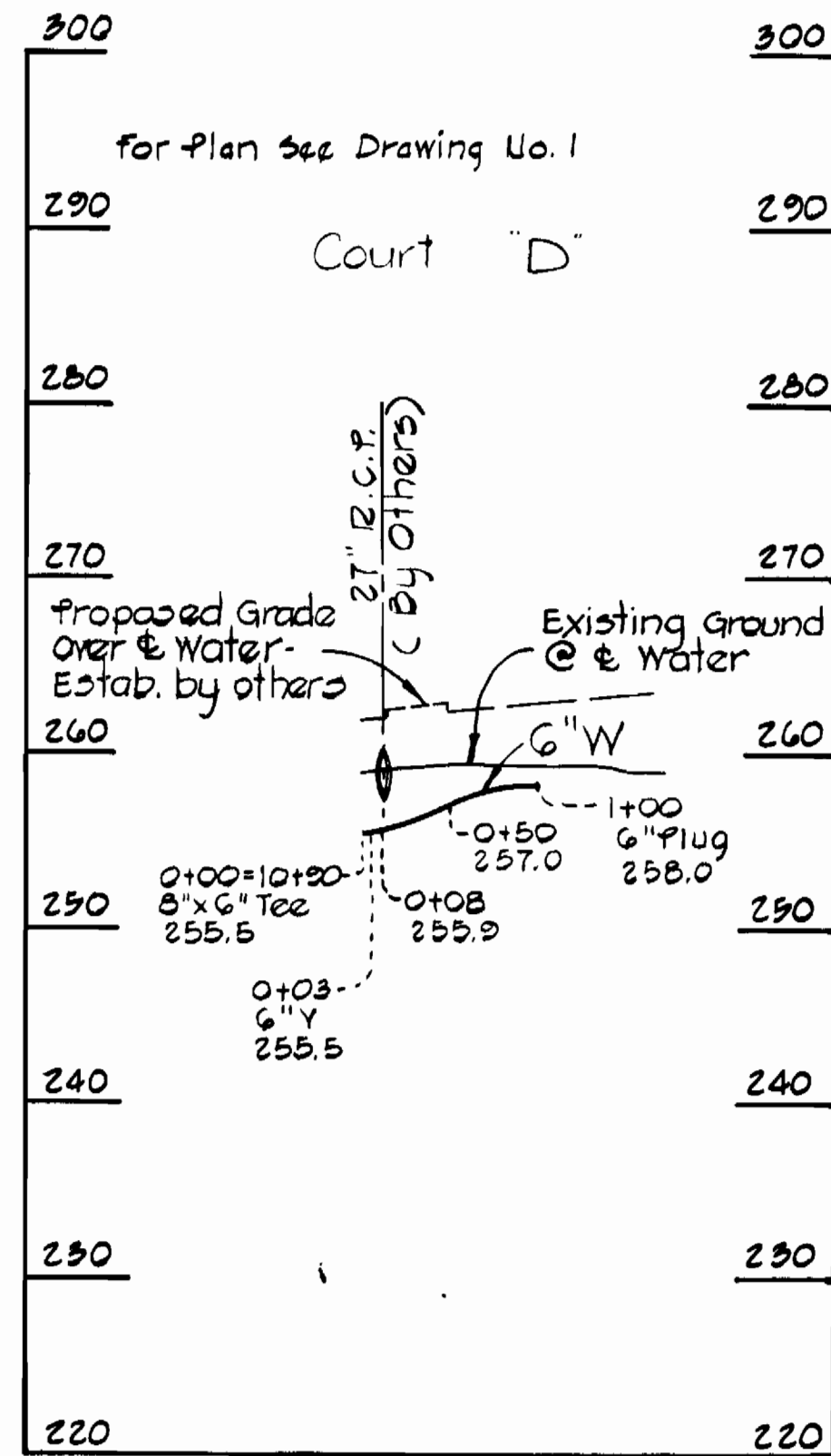
DEPARTMENT OF PUBLIC WORKS
HOWARD COUNTY, MARYLAND
DATE: 8-26-74
CHIEF-BUREAU OF ENGINEERING

CONTRACT NO. 627-D-W&S

PROFILES OF
SEWER MAINS

TYLER GARDENS PHASE I
ELECTRON DISTRICT NO. 6
HOWARD COUNTY, MARYLAND

DRAWING NO. 44 OF 86
SCALE: 1"=10'
DATE: AUGUST 3, 1974



PURDUM & JESCHKE
ENGINEERS
1023 N. CALVERT ST.
BALTIMORE, MARYLAND

DEPARTMENT OF PUBLIC WORKS
HOWARD COUNTY, MARYLAND
DATE 8-26-74
CHIEF BUREAU OF ENGINEERING

CONTRACT NO. 2627-D-W & S

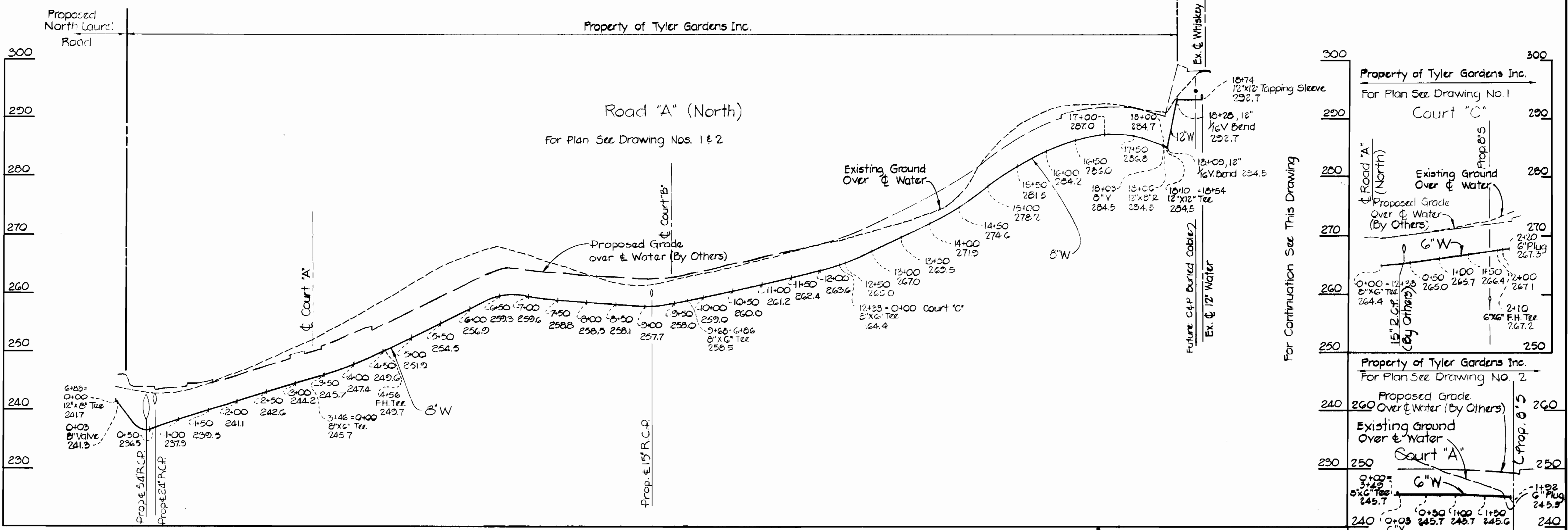
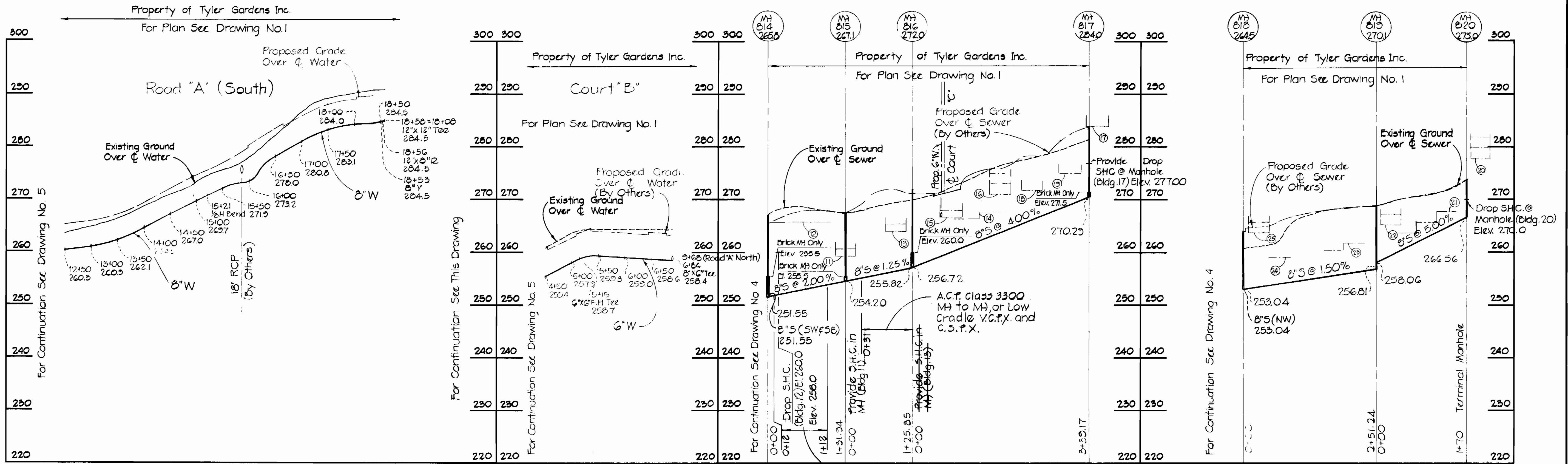
PROFILES OF
WATER MAINS

TYLER GARDENS PHASE I
ELECTION DISTRICT NO. 6
HOWARD COUNTY, MARYLAND

DRAWING NO. 5 OF 6
SCALE: Horz: 1"=100' Vert: 1"=10'

AS-BUILT MAY 20, 1975

CONTRACT NO. 2627-D-W & S
TYLER GARDENS PHASE I
WATER & SEWER EXTENSIONS
AUGUST 3, 1974



CONTRACT NO. 2627-D-W & S
TYLER GARDENS PHASE I
WATER AND SEWER EXTENSIONS

| | | | | | |
|---|--|---------------------------|-------------------------------------|---|---|
| PURDUM & JESCHKE ENGINEERS 1023 N. CALVERT ST. BALTIMORE, MARYLAND | DEPARTMENT OF PUBLIC WORKS HOWARD COUNTY, MARYLAND 8-26-74 DATE | CONTRACT NO. 2627-D-W & S | PROFILE OF WATER AND SEWER MAINS | TYLER GARDENS PHASE I ELECTION DISTRICT NO. 6 HOWARD COUNTY, MARYLAND | DRAWING NO. 16 OF 16 SCALE: HORIZ. 1"=100' VERT. 1"=10' DESIGNED: ABL CHECKED: TAF |
|---|--|---------------------------|-------------------------------------|---|---|