

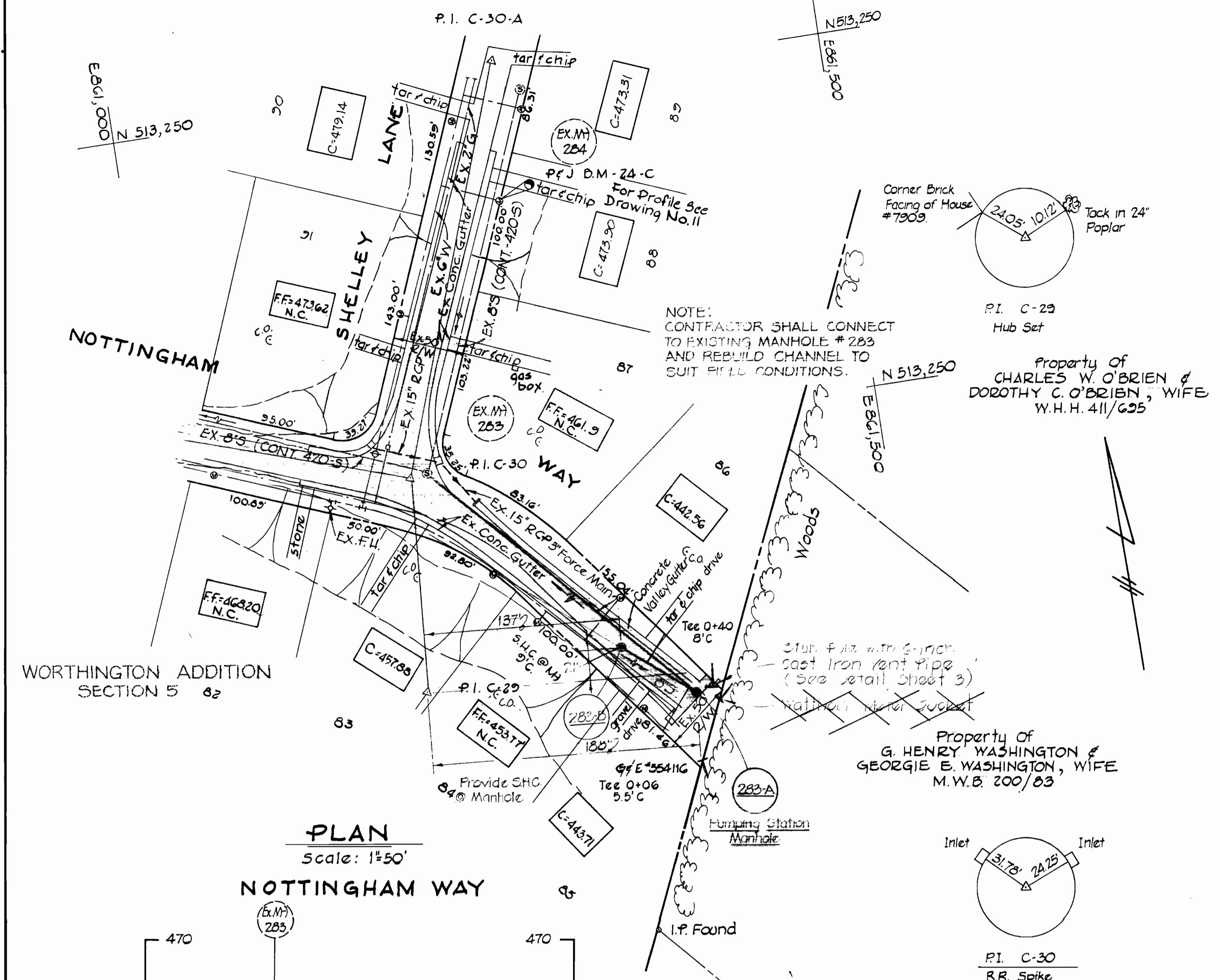
VICINITY MAP

SCALE: 1" = 2000'

GENERAL NOTES

1. Approximate location of existing mains are shown. The Contractor shall take all necessary precautions to protect existing mains and services and maintain uninterrupted supply. Any damage incurred shall be repaired immediately.
2. All pipe elevations shown are invert elevations.
3. The Contractor shall locate existing utilities well in advance of construction operations in vicinity of utilities.
4. Clear all utilities by a minimum of 6 inches. Clear all poles 2'-0" minimum or tunnel as required. Cost for tunneling or bracing poles shall be included in the unit prices bid for excavation.
5. For all standard details see Standard Details bound in Specifications.
6. Three inch force main to be cast iron pipe Class 22 and have a minimum of 4 feet cover.
7. Block all fittings with concrete. See Standard Details bound in Specifications.
8. All manholes shall be 4'-0" inside diameter, unless otherwise noted.
9. The Contractor shall provide a pipe joint in each sewer main within 2'-0" of the exterior of manhole walls.
10. Elevations are on United States Coast and Geodetic Survey Datum. Grid system is based on Maryland State Plane Coordinate System.

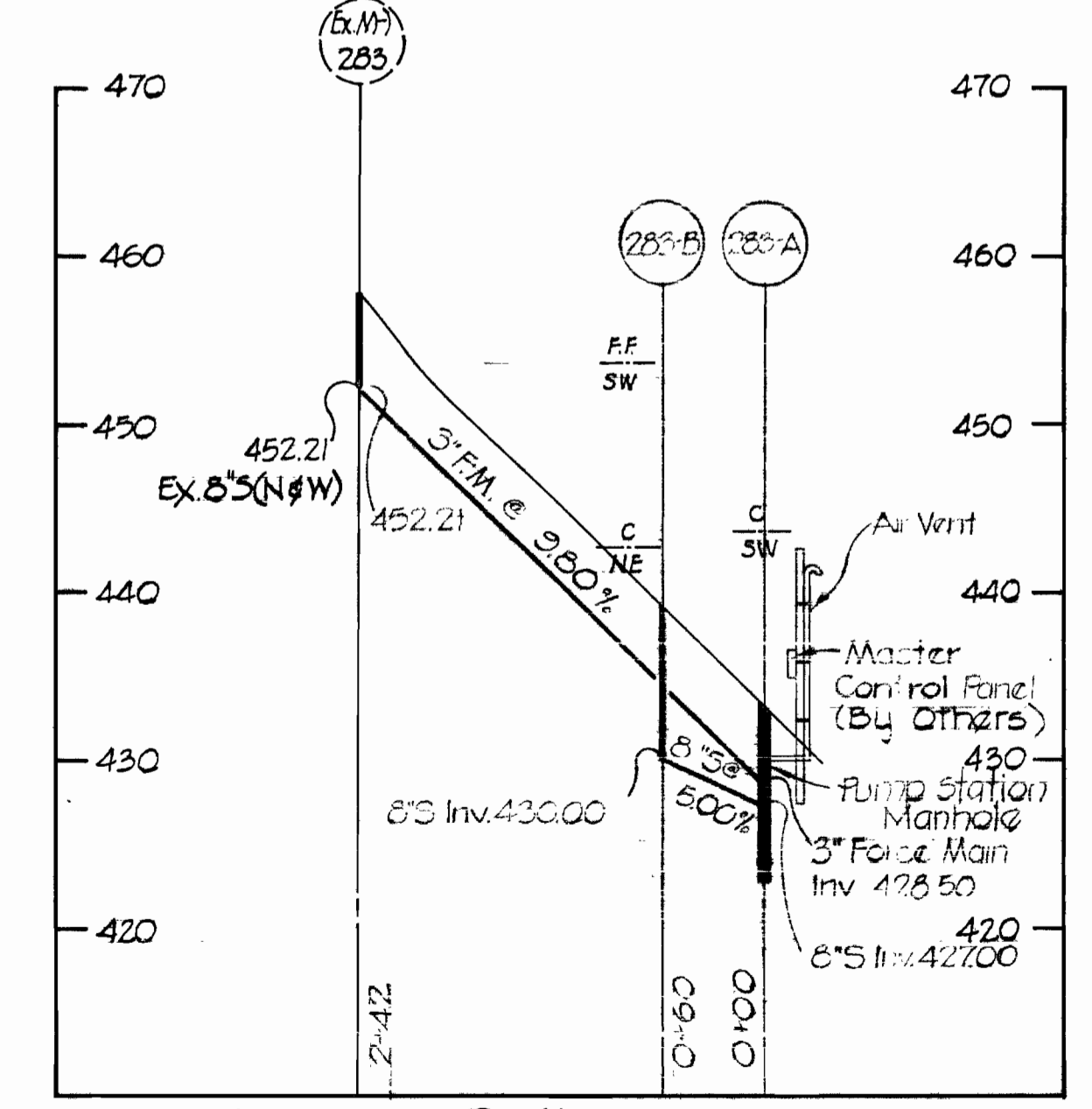
BENCH MARK
 P & J B.M. "24-C" Elev. 476.85
 2 Notches (") on water meter rim in front of residence 4705 Shelley Lane, ±202' north of P & J traverse station "C-30".



PLAN

Scale: 1" = 50'

NOTTINGHAM WAY



Profile
 HORIZ: 1" = 100'
 VERT: 1" = 10'

Note:
 Cast iron pipe shall be ASA A21.6 or A21.8 Class 22 with Class 150 ASA A21.10 class 150 flanged fittings. Pipe and fittings shall be bituminous coated and cement lined. See Section 7 "Furnishing and Laying Cast Iron Pipe, Fittings and Appurtenances" of the Specifications.

QUANTITIES	
3" Force Main	242 L.F.
8" Sewer	60 L.F.



SCOPE OF CONTRACT:
 It is the intent of the Howard County Department of Public Works to furnish and install the sewerage pumps, electrical control panel, and some of their related appurtenances, upon completion of the work as shown hereon. These items will be noted on the drawings as "By Others". All other work as shown will be performed by the Contractor.

Contract No. 606-S
 Nottingham Way Pump Station

PURDUM & JESCHKE
 ENGINEERS
 1023 N. CALVERT ST.
 BALTIMORE, MARYLAND

DEPARTMENT OF PUBLIC WORKS
 HOWARD COUNTY, MARYLAND
 DATE: 5-14-74
 Chief Bureau of Engineering

CONTRACT NO. **606-S**

PUMPING STATION
 PLAN, PROFILE AND
 DETAILS

NOTTINGHAM WAY
 ELECTION DISTRICT NO. 2
 HOWARD COUNTY, MARYLAND

DRAWING
 NO. 1
 OF 3

SCALE
 AS SHOWN

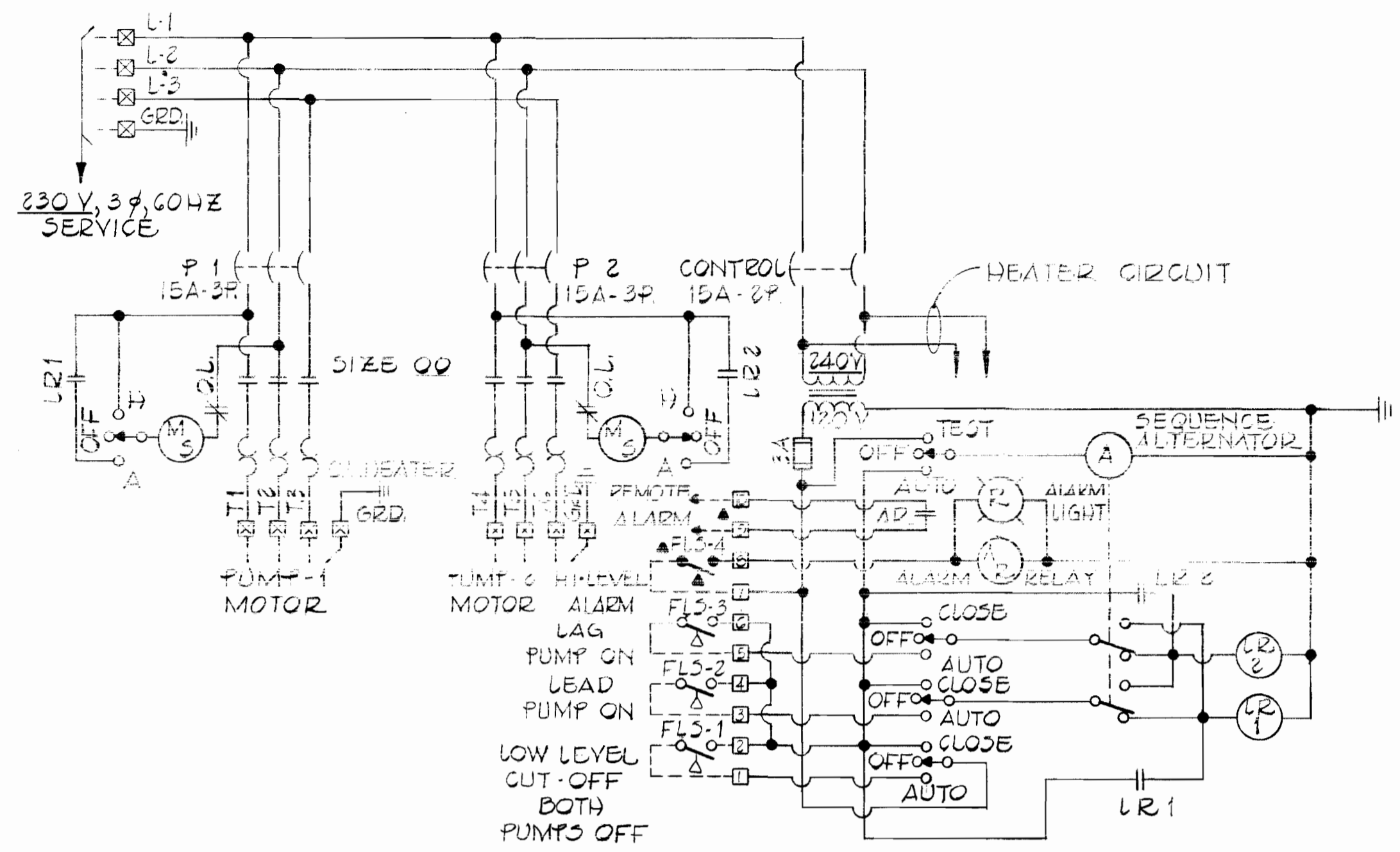
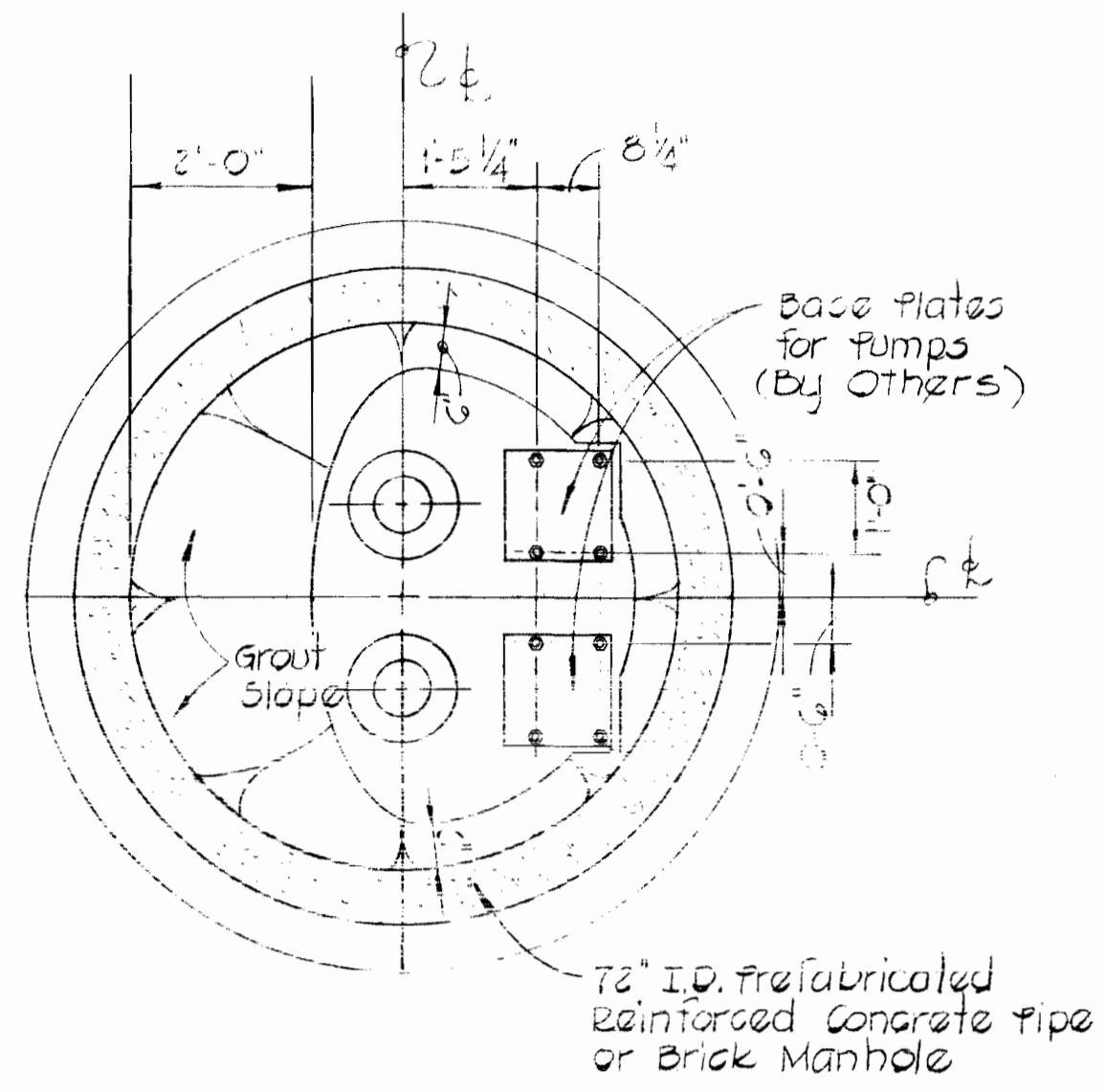
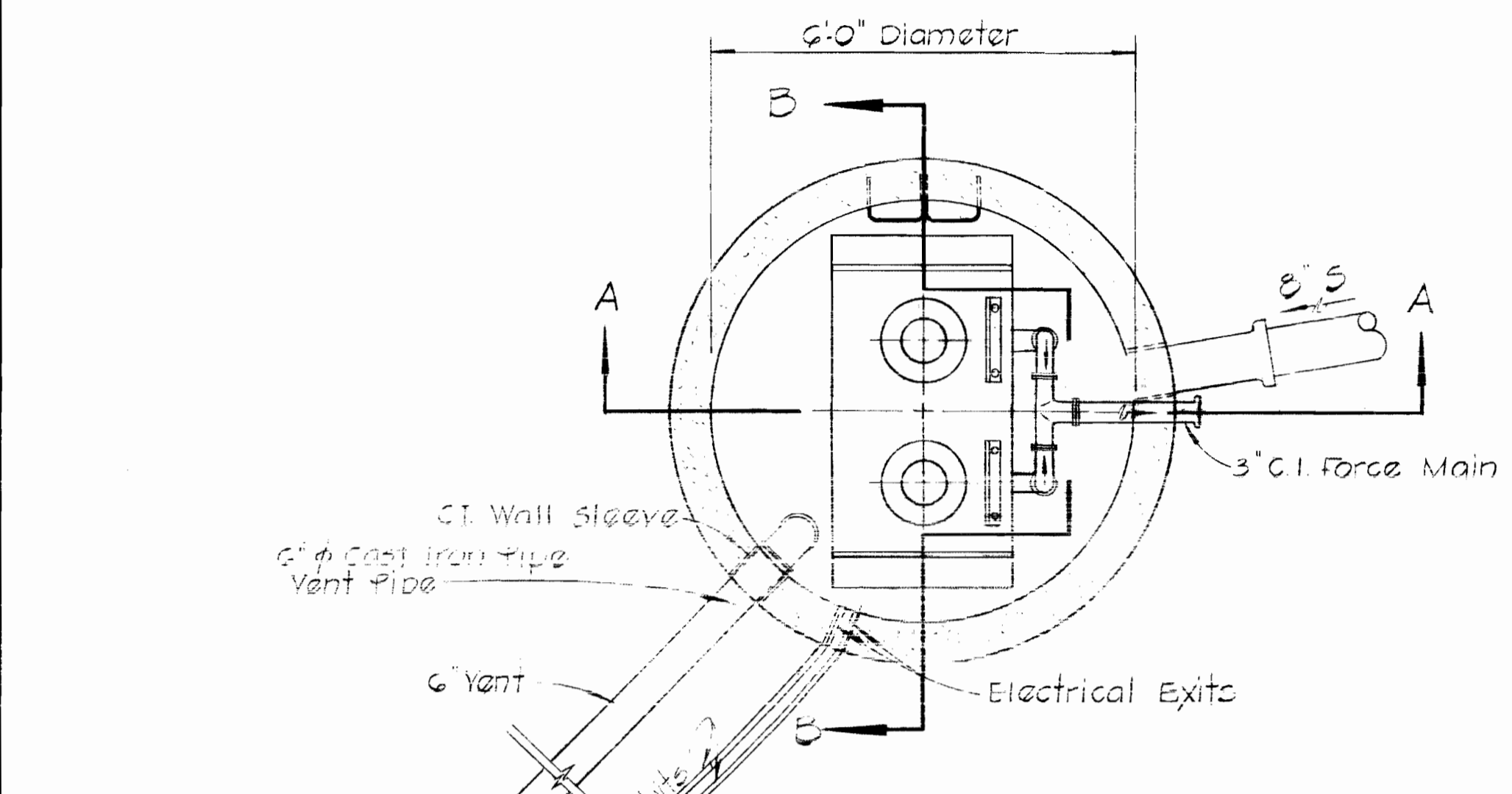
Designed: T.A.F.
 Drafted: R.B.B.
 Checked: T.A.F.

WS 606-S

November 7, 1974
 "As Built"

SPECIFICATIONS
 PUMP MODEL-BARNES H5E T3-BAF
 H.P. - 3/4
 AMPS - 3.6
 VOLTS - 230
 ALARM LIGHT - YES
 ALARM RELAY - YES

NOTES:
 1. ALL DOTTED WIRING BY OTHERS.
 2. FLOAT SWITCHES SHOWN AT LOW WATER.



PLAN BELOW SLAB
 Scale: 1/2"=1'-0"

Aluminum Angle Supports
 2" x 2" x 1/4" notch pole
 for angle supports
 (By Others)

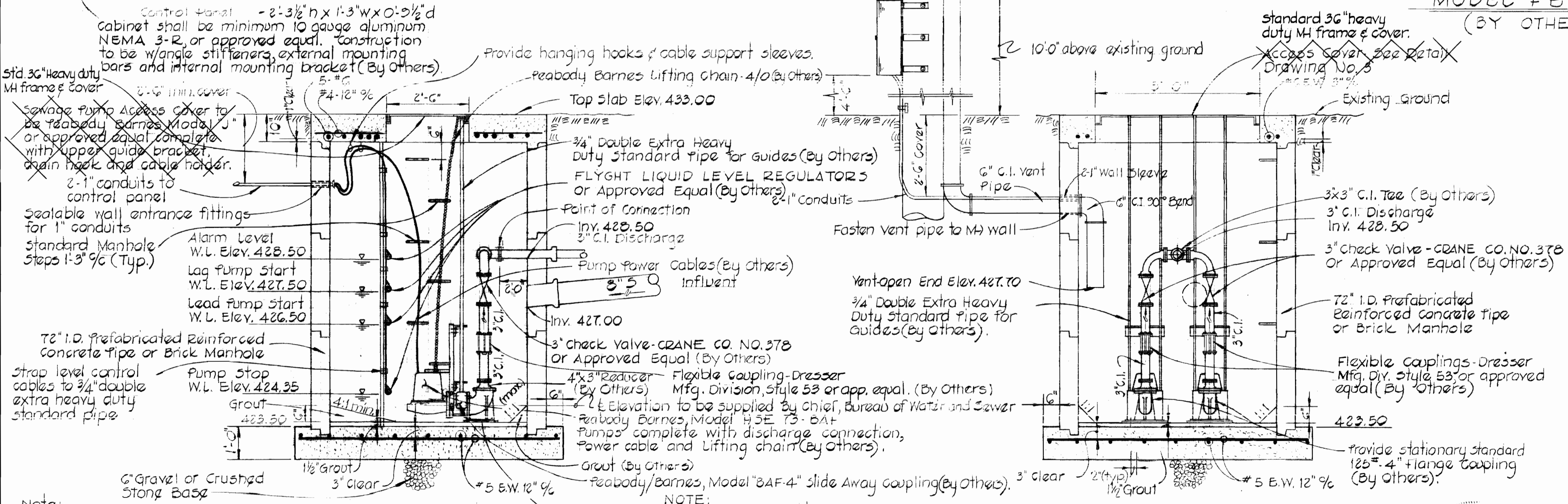
3/8" x 2" Galvanized Straps 5'-0" %.

Run vent up pole
 10'-0" above existing ground
 (See Detail, Drawing No. 3)

Stub Pole - 20' C.I. V

FLOOR PLAN
 Scale: 1/2"=1'-0"

WIRING DIAGRAM
FLOW ELECTRIC-DUPLEX PUMP CONTROLLER
MODEL FE 100-3
 (BY OTHERS)



Note:
 Power and control cables shall
 be continuous from pumps
 and float controls back
 to control panel (By Others)

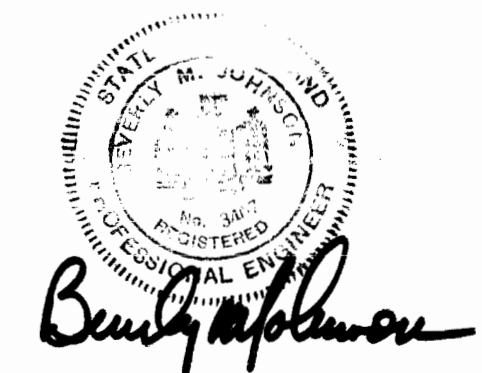
Provide conduit couplings
 & watertight cable
 connectors at power
 exit through wall (By Others)

NOTE:
 All pipe and fittings
 inside M shall be
 flanged ends.

SECTION "A-A"
 Scale: 1/2"=1'-0"

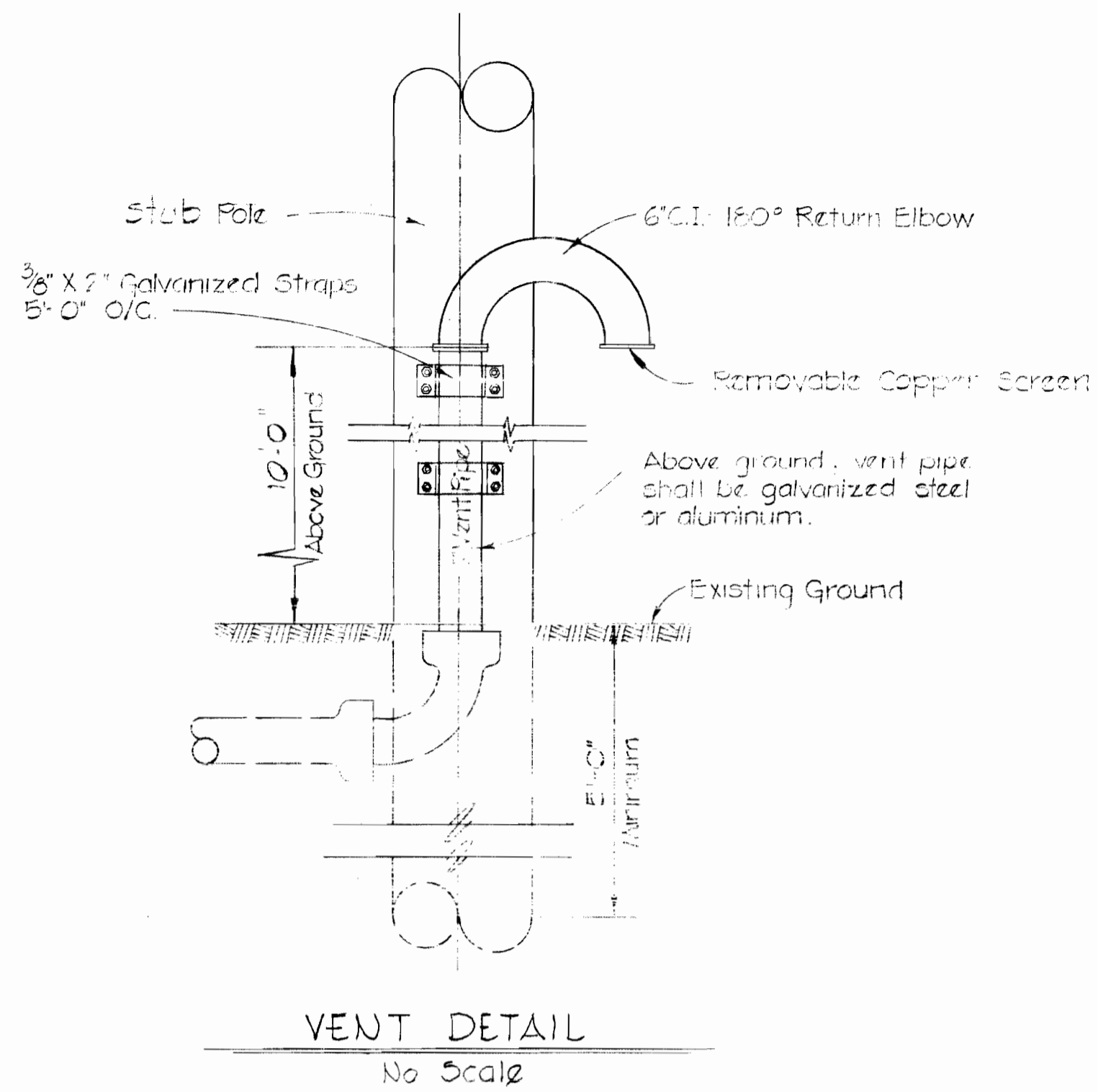
SECTION "B-B"
 Scale: 1/2"=1'-0"

PUMPING STATION MANHOLE

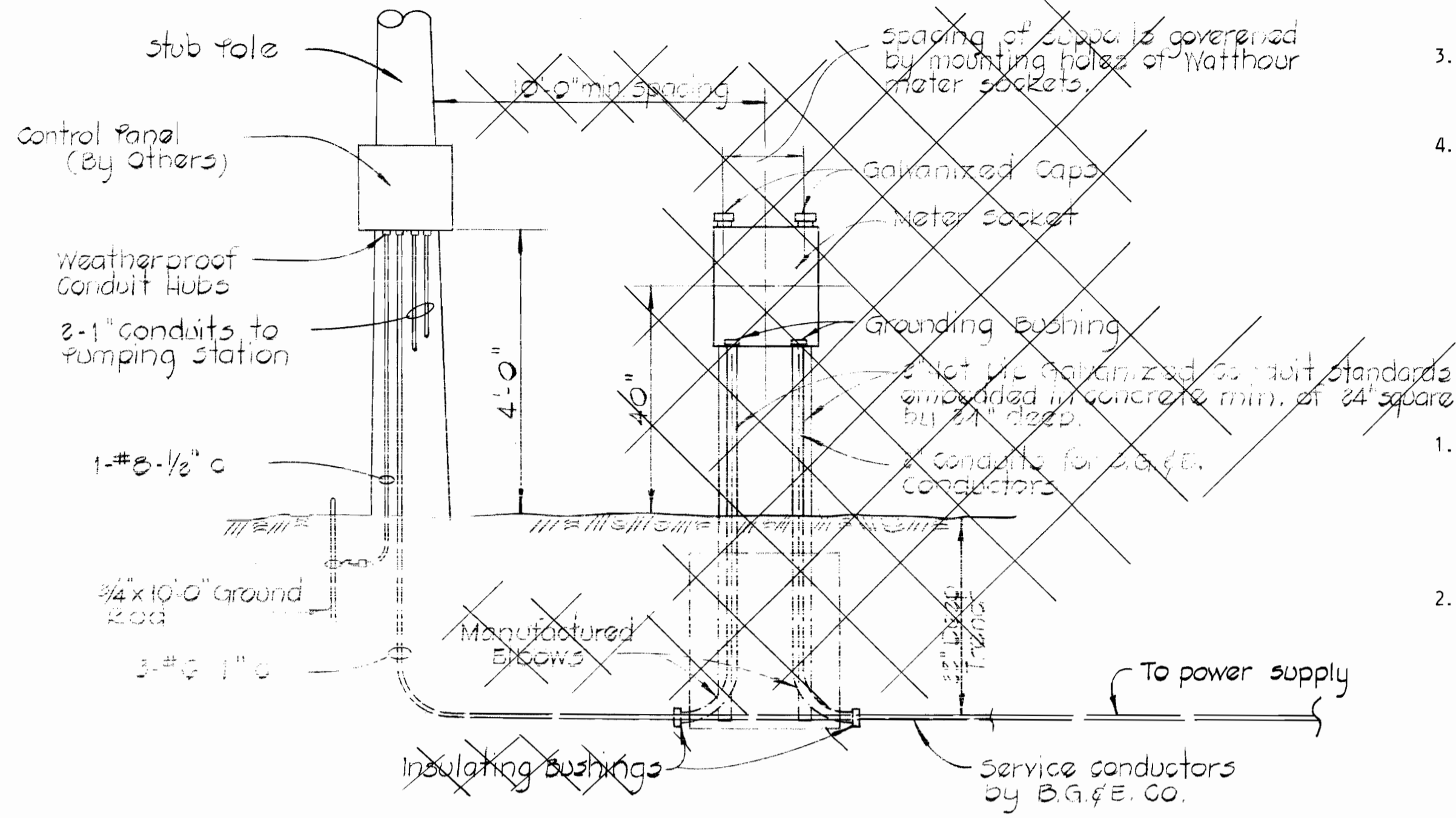


Contract No. 606-S
 Nottingham Way Pumping Station

PURDUM & JESCHKE ENGINEERS 1023 N. CALVERT ST. BALTIMORE, MARYLAND	DEPARTMENT OF PUBLIC WORKS HOWARD COUNTY, MARYLAND 5-14-74 DATE	CONTRACT NO. 606-S	PUMPING STATION DETAILS	NOTTINGHAM WAY ELECTION DISTRICT NO. 2 HOWARD COUNTY, MARYLAND	DRAWING NO. 2	SCALE AS SHOWN	Designed: TAF
					OF 3		Checked: TAF



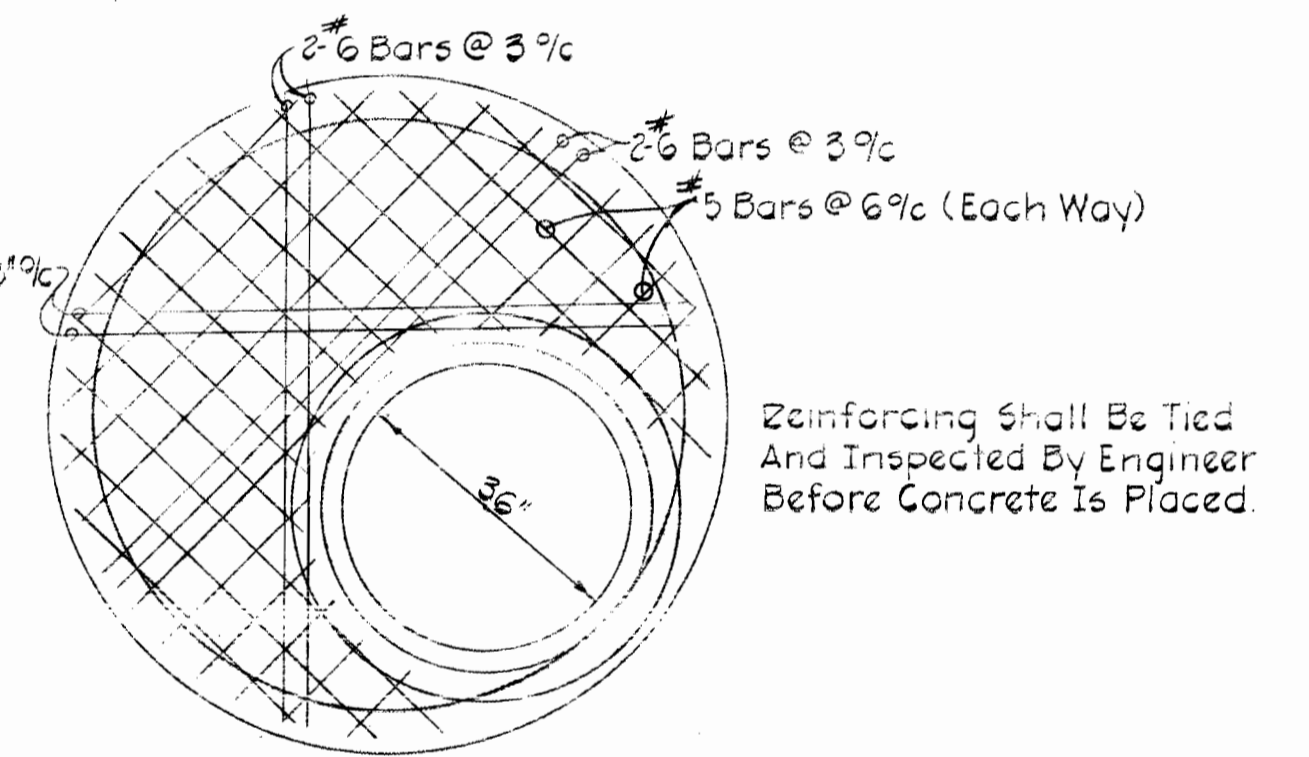
VENT DETAIL
No Scale



DETAIL - ELECTRICAL SERVICE
No Scale

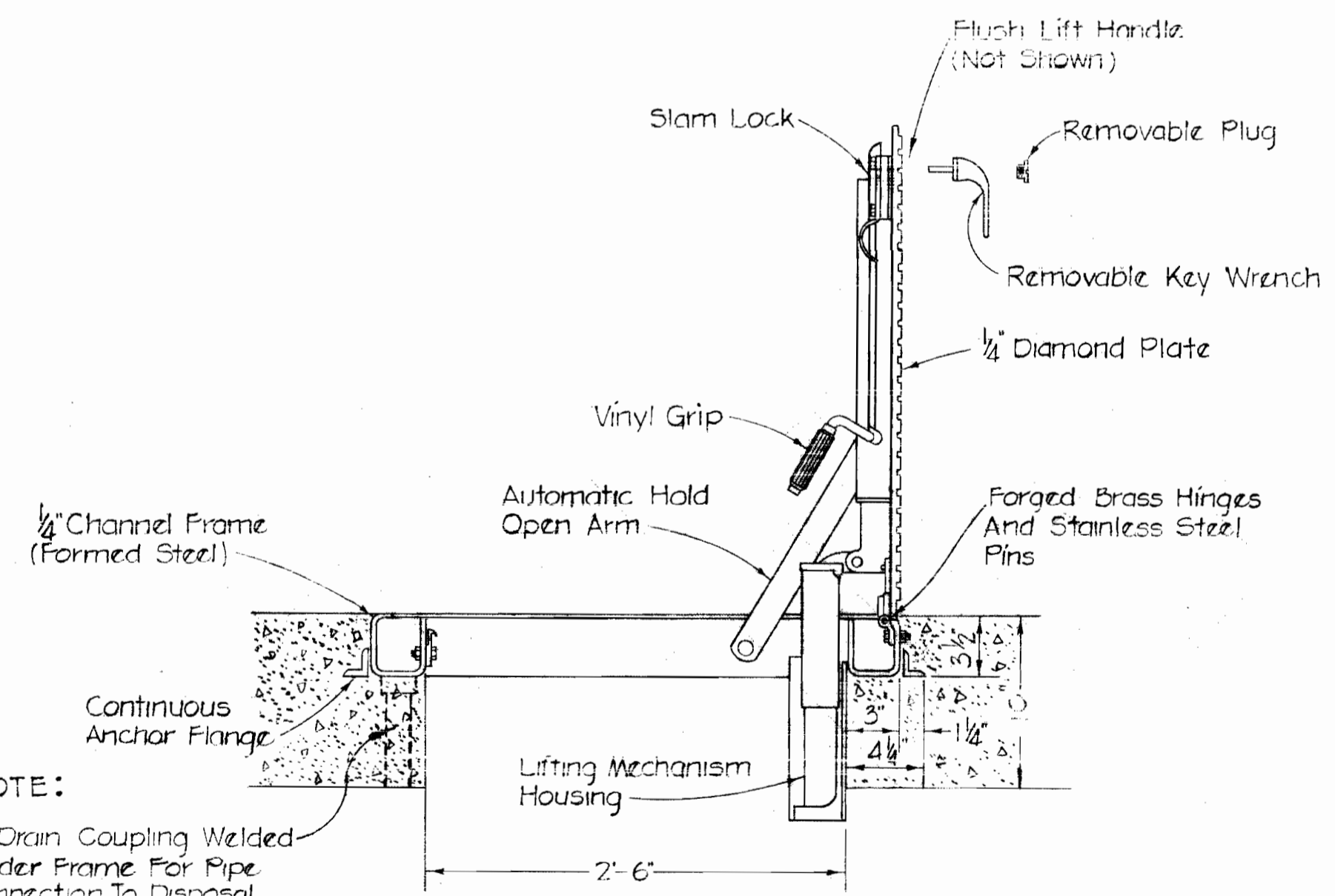
- STRUCTURAL NOTES**
1. All excavation shall be inspected by the Engineer before placing any gravel or concrete.
 2. All concrete shall be Class "A" and shall contain an air entraining admixture, "Darex" or an approved equal. The amount of air entraining shall be $4.5\% \pm 1.5\%$ by volume.
 3. All concrete poured in temperatures above 50°F shall contain a retarding admixture, "Plastiment" or an approved equal, to a proper amount resulting in a retardation of 2 to 3 hours.
 4. All concrete poured in temperatures below 50°F shall contain a densifying admixture "Sikacrete" or an approved equal at the rate of 1 1/2 gallons per cubic yard of concrete.

- PAINTING**
1. All items of mechanical equipment and vent pipe shall be painted as follows:
 - a) One shop prime coat of Inertol Rust Inhibitive Primer No. 621 or one field prime coat of Inertol Rust Penetrating Primer No. 622 or approved equal.
 - b) Two finish coats of Inertol Glamortex Enamel No. 306 or an approved equal.
 2. Outside of vaults to be waterproofed with 3 coats of Inertol Standard or approved equal.



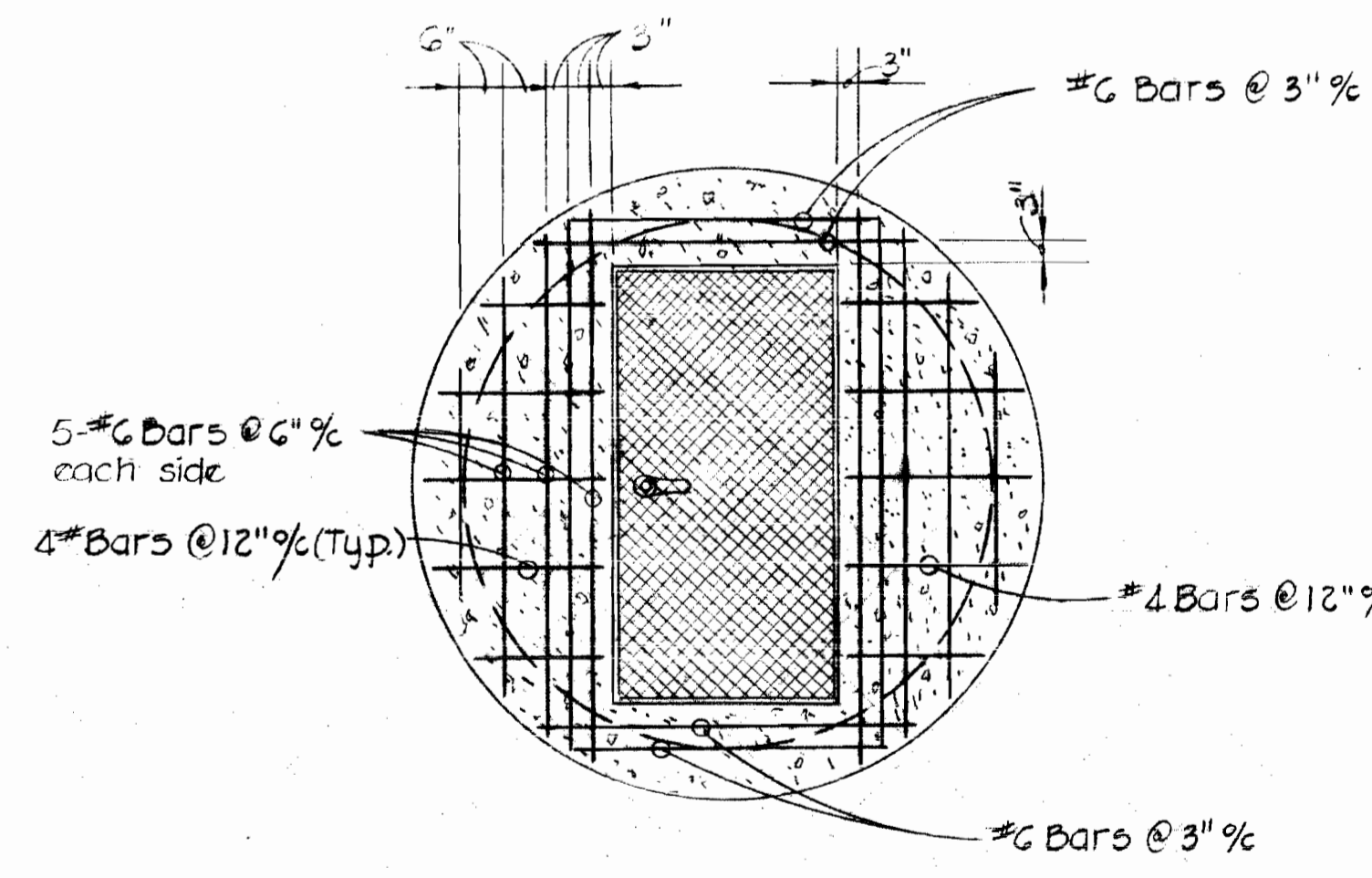
#6 Bars Shall Be Placed @ 9\"/>

Reinforcing Shall Be Tied And Inspected By Engineer Before Concrete Is Placed.

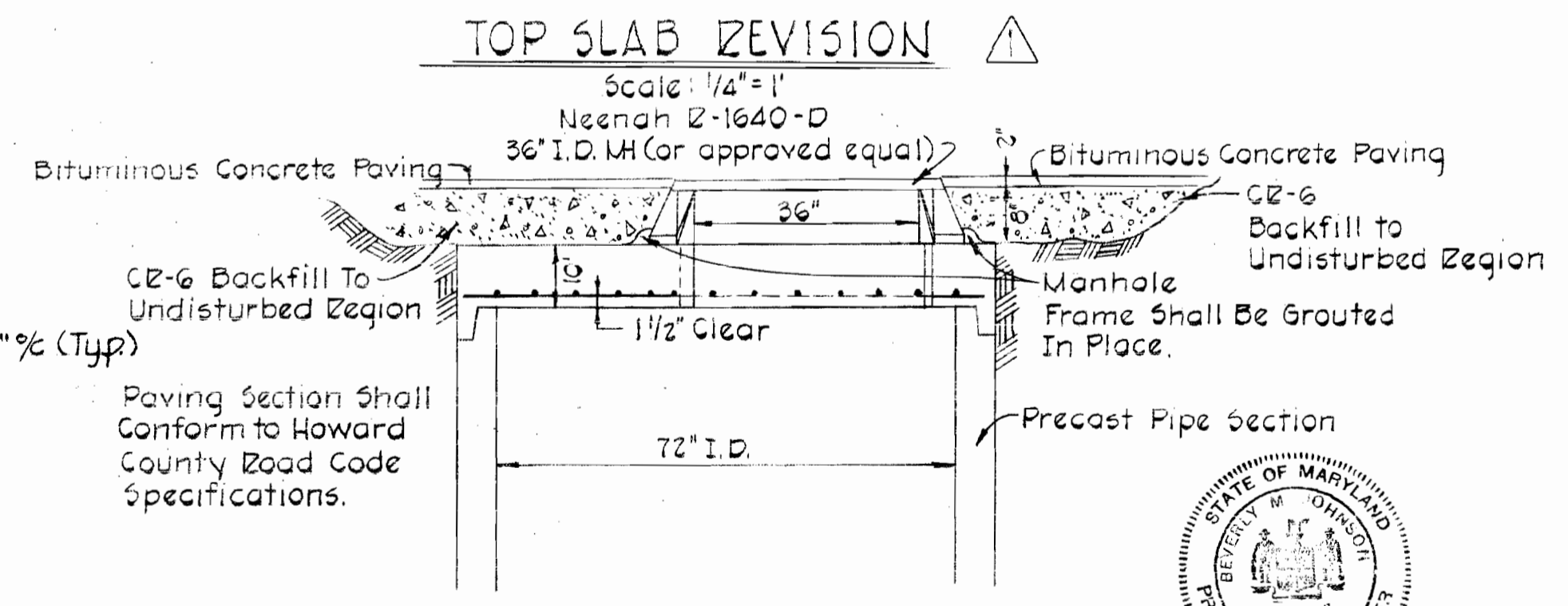


SEWAGE PUMP ACCESS COVER
NO SCALE

NOTE:
1/4\"/>



TOP SLAB DETAIL
Scale: 1/2" = 1'-0"



Paving Section Shall Conform to Howard County Road Code Specifications.

Professional Engineer
Barry Hoffmann

REV.	DATE	REMARKS
1	10-28-74	Sewage Pump Access Cover deleted, 36\"/>

CONTRACT NO. 606-S
NOTTINGHAM WAY PUMP STATION

WS 606-S/3

PURDUM & JESCHKE
ENGINEERS
1023 N. CALVERT ST.
BALTIMORE, MARYLAND

DEPARTMENT OF PUBLIC WORKS
HOWARD COUNTY, MARYLAND
5-14-74
W. O. Filbeck
CHIEF BUREAU OF ENGINEERING

CONTRACT NO. 606-S

PUMPING STATION
DETAILS

NOTTINGHAM WAY
ELECTION DISTRICT NO. 2
HOWARD COUNTY, MARYLAND

DRAWING NO. 3 OF 3
SCALE AS SHOWN
Designed: TAF
Drafted: RBB
Checked: TAF

November 7, 1974
As Built