

VICINITY MAP  
Scale: 1" = 1/2 Mile

GENERAL NOTES

- 1) Approximate locations of existing utilities are shown. The contractor shall take all necessary precautions to protect the existing utilities and to maintain uninterrupted service. Any damage incurred due to contractor's operations shall be repaired immediately at the contractor's expense.
- 2) All pipe elevations shown are invert elevations.
- 3) The contractor shall locate existing utilities a minimum of two weeks in advance of construction operations in the vicinity of utilities.
- 4) For all standard details see standards bound in specifications.
- 5) Block all water main fittings with concrete, see standards bound in specifications.
- 6) Clear all utilities by a minimum of 6", clear all utility poles by 2'-0" minimum or tunnel as required.
- 7) The contractor shall provide a joint in all sewer mains within 2'-0" of exterior manhole walls.
- 8) All manholes to be 4'-0" inside diameter.
- 9) Bury Line Elevations on fire hydrants shall be set to the elevations shown on the plans.
- 10) Cost of strapping fire hydrants and valves to be included in the unit price bid for furnishing and installing fire hydrants.
- 11) All fire hydrants shall be strapped to the tee and shall be buttressed with concrete in accordance with standard details.
- 12) All horizontal and vertical control is based on the Maryland State Grid System.
- 13) All water house connections shall service two (2) dwelling units and shall be 1" diameter, except where noted differently on the plan.
- 14) All sanitary house connections shall service two (2) dwelling units by placing a wye branch at the right-of-way line, except where noted differently on the plan.
- 15) Contractor shall notify "Miss Utilities" 901 555-0100 at least 48 hours prior to construction.

BENCH MARKS

B.M. 10"	Elev. 368.70
N.R. Spike found in pole on North side of Frederick Road opposite C & P No. 46A.	
B.M. 4"	Elev. 378.62
Northwest corner of storm drain grate, East side of Plumtree Drive.	

As-Built notes:

1. All SHC & WHC are ABANDON, (Except those with as-built dimensions)
2. All WHC 1 1/2" (TYP)
3. All dimensions Plus or Minus, our foot

QUANTITIES	
8" Sewer	2440 L.F.
6" Water	2840 L.F.
Hydrants	3 Ea.

ISSUE	DATE	REVISION
1	10/7/74	Initial
2	11/27/74	Rev. 2" WHC to 1 1/2" (TYP)

CONTRACT NO. 2603-D-W&S  
WATER AND SEWER EXTENSION  
PLUMTREE APARTMENTS  
SECTION NO. 2

Property of  
E. C. WILSON & H. E. EARP  
TRUSTEES  
481/305



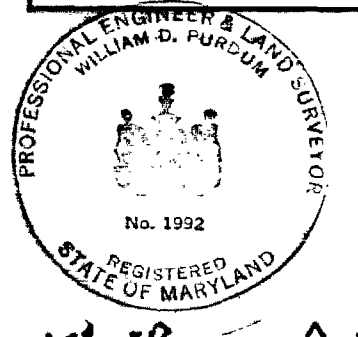
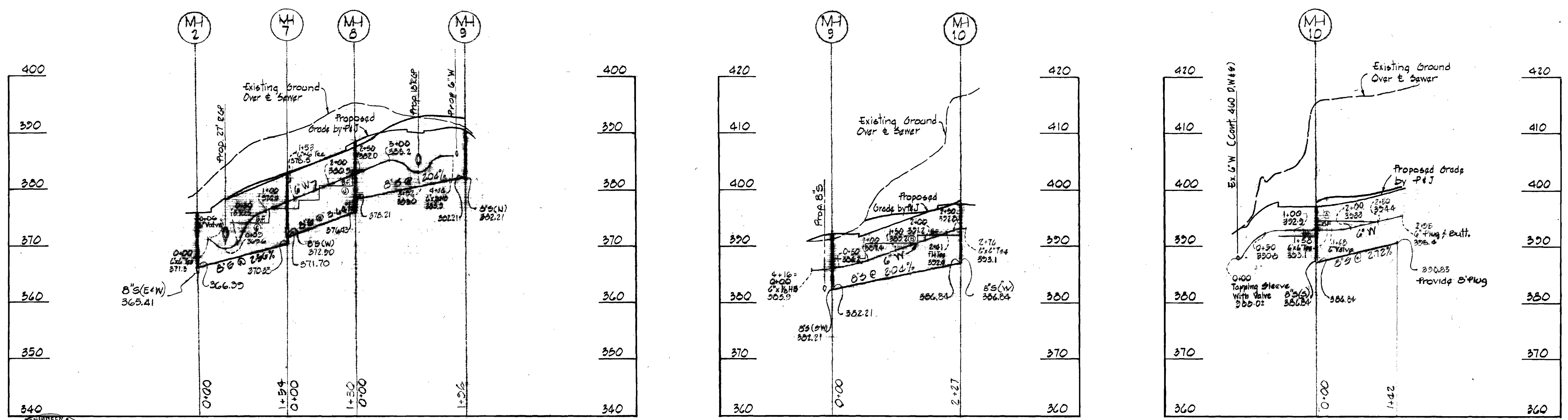
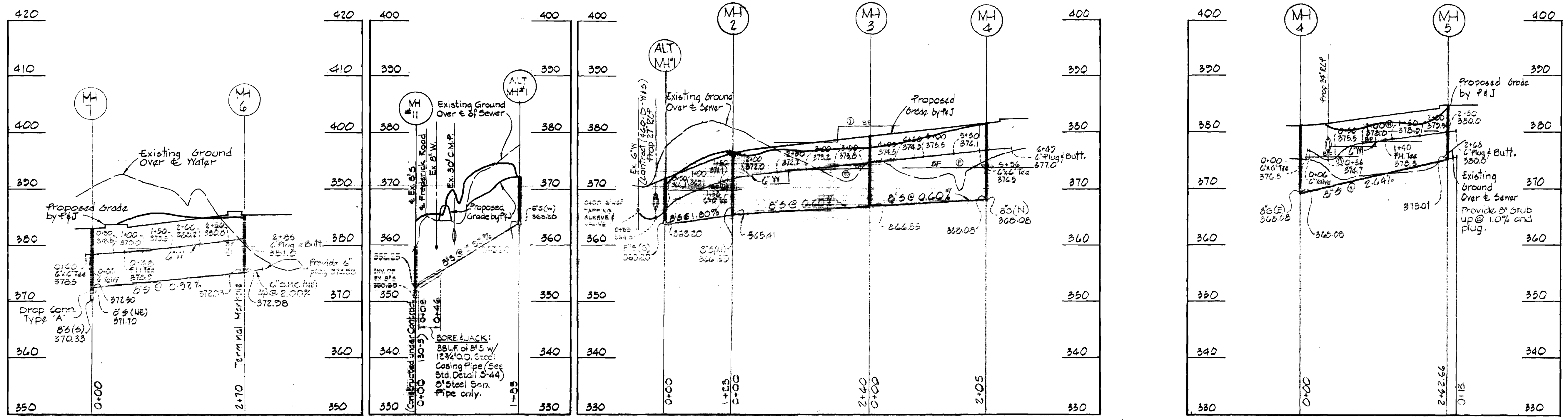
PURDUM & JESCHKE  
ENGINEERS  
1023 N. CALVERT ST  
BALTIMORE, MARYLAND.

DEPARTMENT OF PUBLIC WORKS  
HOWARD COUNTY MARYLAND  
1-10-74

CONTRACT NO. 2603-D-W&S

As-Built 10-7-75

Revised April 10, 1974



**PURDUM & JESCHKE**  
ENGINEERS  
1023 N. CALVERT ST.  
BALTIMORE, MARYLAND

**DEPARTMENT OF PUBLIC WORKS**  
HOWARD COUNTY, MARYLAND  
1-19-75  
DATE

CONTRACT NO. 2603-D-W&S

PROFILES  
OF WATER AND SEWER MAINS

PLUMTREE APARTMENTS  
SECTION NO. 2  
ELECTION DISTRICT - ELLICOTT CITY NO. 2

**DRAWING NO. 2 OF 2**  
**SCALE**  
VERTICAL 1"=10'  
HORIZONTAL 1"=10'

LOG NO.	DATE	REVISION
1	8/8/74	MH#1 to MH#2003 (DELETED)
1	11/21/74	ALT MH#1 to MH#11 (ADDED)
1	1/3/75	Revise WIC's to in-older meter setting

CONTRACT NO. 2603-D-W&S  
WATER & SEWER EXTENSION  
PLUMTREE APARTMENTS  
SECTION NO. 2

WS 603. W&S/2