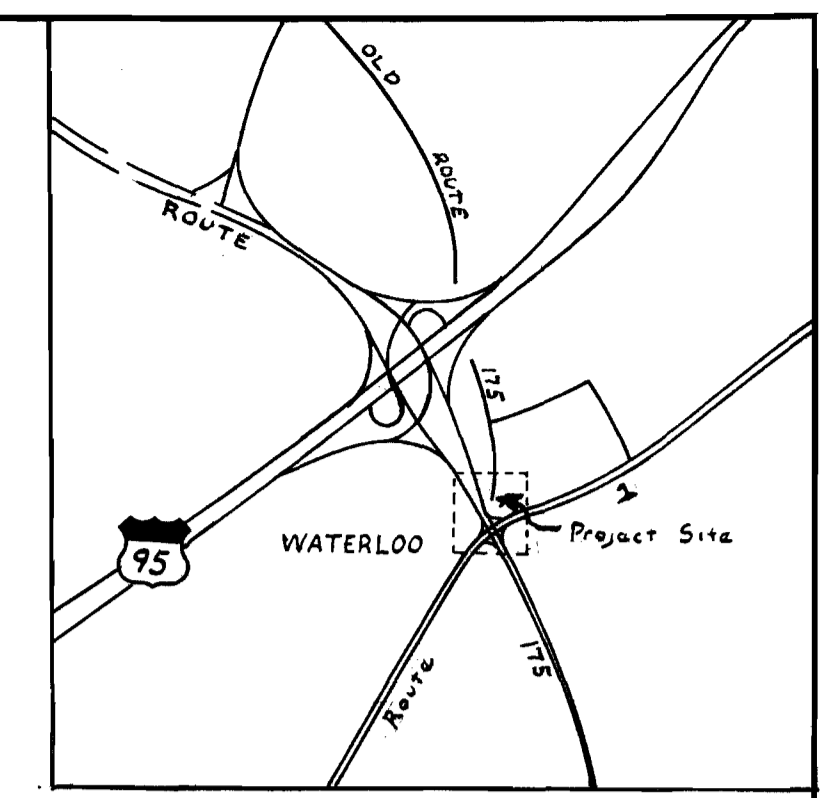
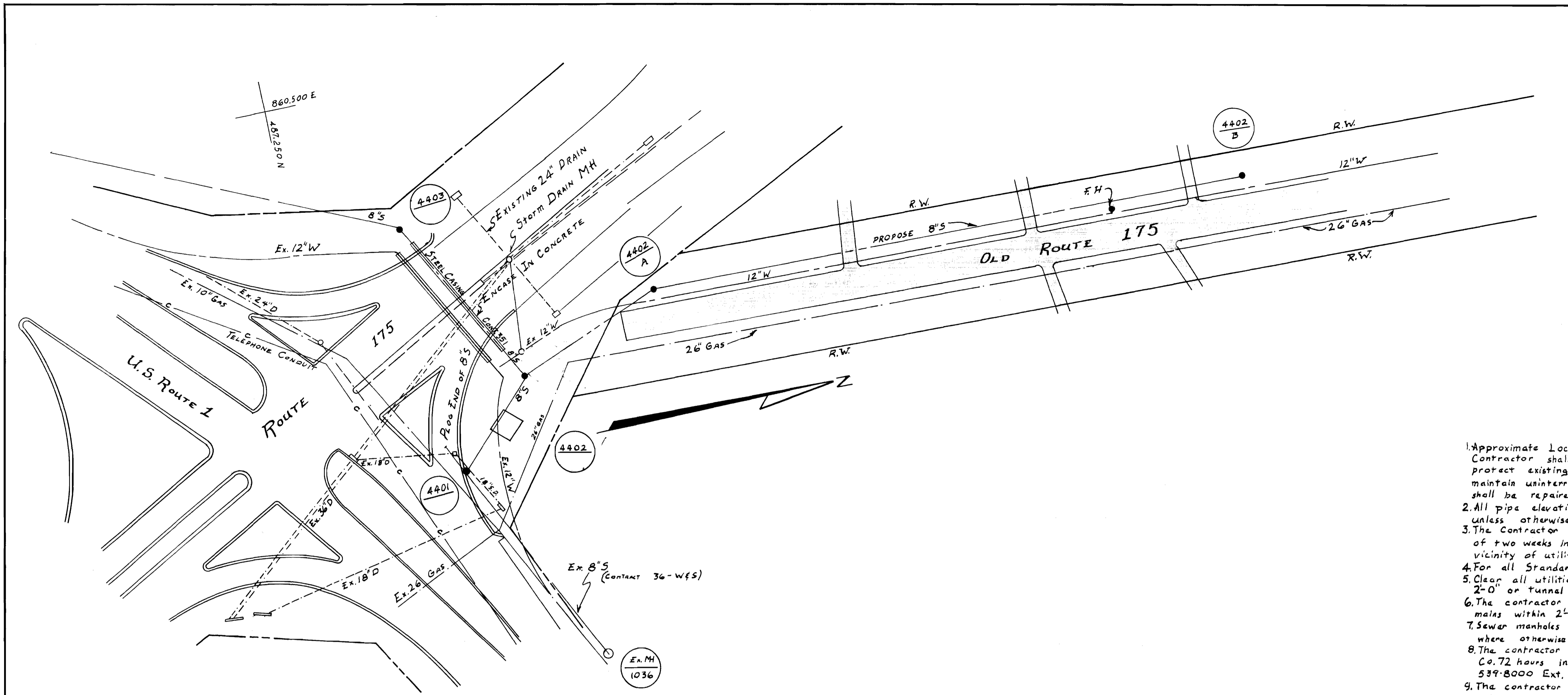


WS 593 5/1

suspense

suspense

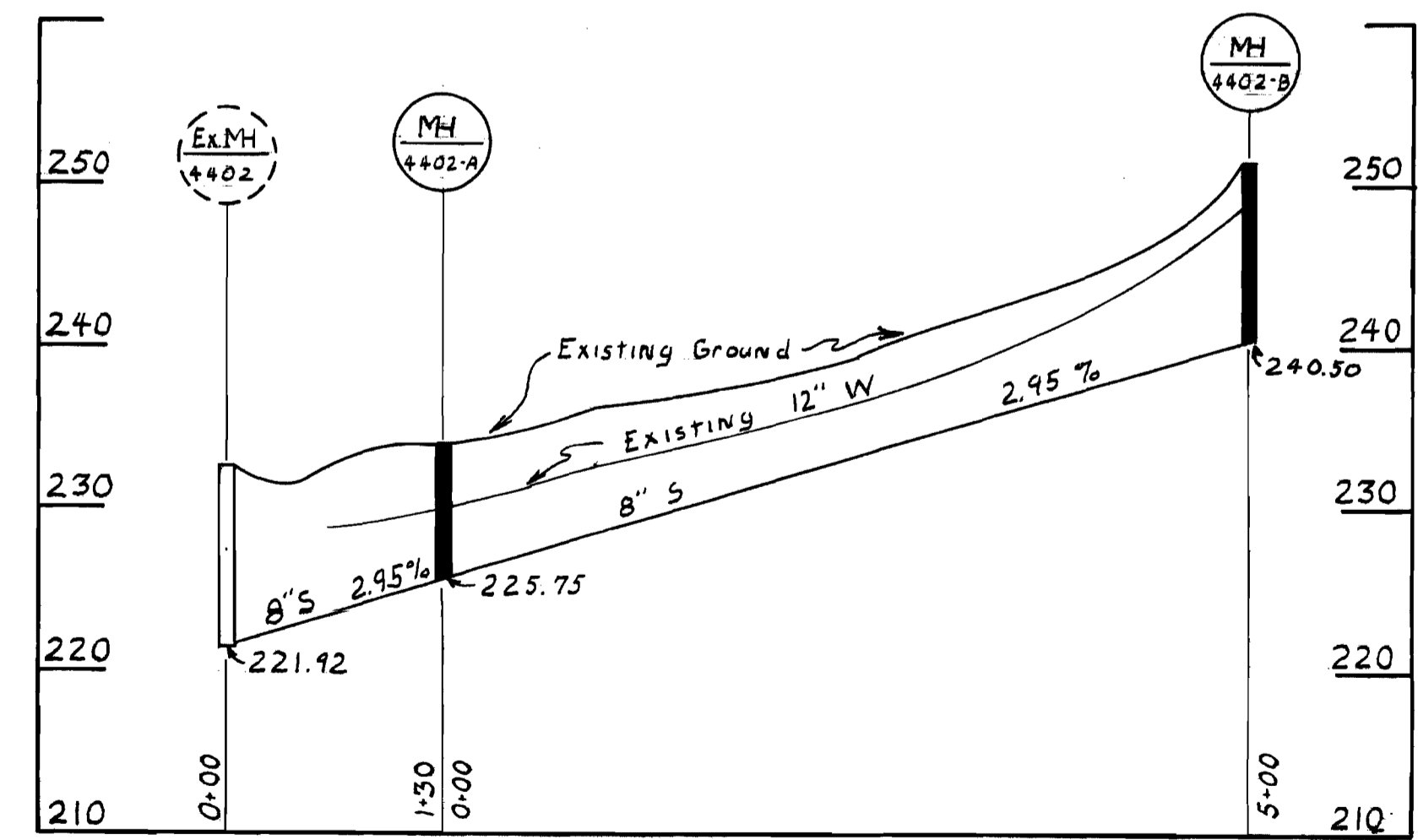
suspense



SCALE 1"=50

GENERAL NOTES

1. Approximate location of existing mains and shown. The Contractor shall take all necessary Precautions to protect existing mains and service connections and maintain uninterrupted Supply. And damage incurred shall be repaired immediately.
2. All pipe elevations shown are invert elevations unless otherwise noted.
3. The Contractor shall locate existing utilities a minimum of two weeks in advance of construction operations in vicinity of utilities.
4. For all Standard Details see Howard County Standards.
5. Clear all utilities by a minimum of 6". All poles by a 2'-0" or tunnel as required.
6. The contractor shall provide a joint in all sewer mains within 2'-0" of exterior manholes walls.
7. Sewer manholes shall be 4'-0" inside diameter except where otherwise noted.
8. The contractor shall notify the Balto. Gas & Electric Co. 72 hours in advance of excavation by calling 534-8000 Ext. 69.
9. The contractor shall notify the C&P Telephone Co. prior to any construction in the vicinity of any Telephone Co. facilities by calling collect 685-0400 in Balto. Maryland.
10. All sewer mains to be V.C.P.X.A.C.P. class 2400 or C.S.P. unless otherwise noted.
11. Trees are to be protected against damage to the max. extent reasonable.



HOWARD COUNTY BUREAU OF ENGINEERING INSPECTION & SURVEY DIVISION	HOWARD COUNTY MARYLAND		CONTRACT NO. 593 M & OS	PLAN & PROFILE OF SEWER MAINS	FIRST WATERLOO ELECTION DISTRICT	DRAWING NO. 1 OF 1	SCALE AS SHOWN
	APPROVED DIRECTOR OF PUBLIC	APPROVED DATE CHIEF-BUREAU OF ENGINEERING					

As Built 12-31-74

DRAWN By J. Larrick 12-23-74