

PROJECT NO. WP 8056

COLUMBIA WATER PUMPING STATION

HOWARD COUNTY, MARYLAND

DEPARTMENT OF PUBLIC WORKS

QUANTITIES	
12" W A.C.P.	1080 LF
16" W DIP CL2	810 LF
Fire Hydrants (MH)	?

Stakeout & Diary # 5765



*Kenneth A. McCord*

Water Main For  
Columbia Water Pumping Station  
Project No. WP 8056  
Contract No. 581-W

WHITMAN, REQUARDT & ASSOCIATES  
ENGINEERS  
1304 ST. PAUL ST.  
BALTIMORE, MARYLAND

DEPARTMENT OF PUBLIC WORKS  
HOWARD COUNTY, MARYLAND

9.13.74  
DATE

*W. O. Fulbert*  
CHIEF-BUREAU OF ENGINEERING

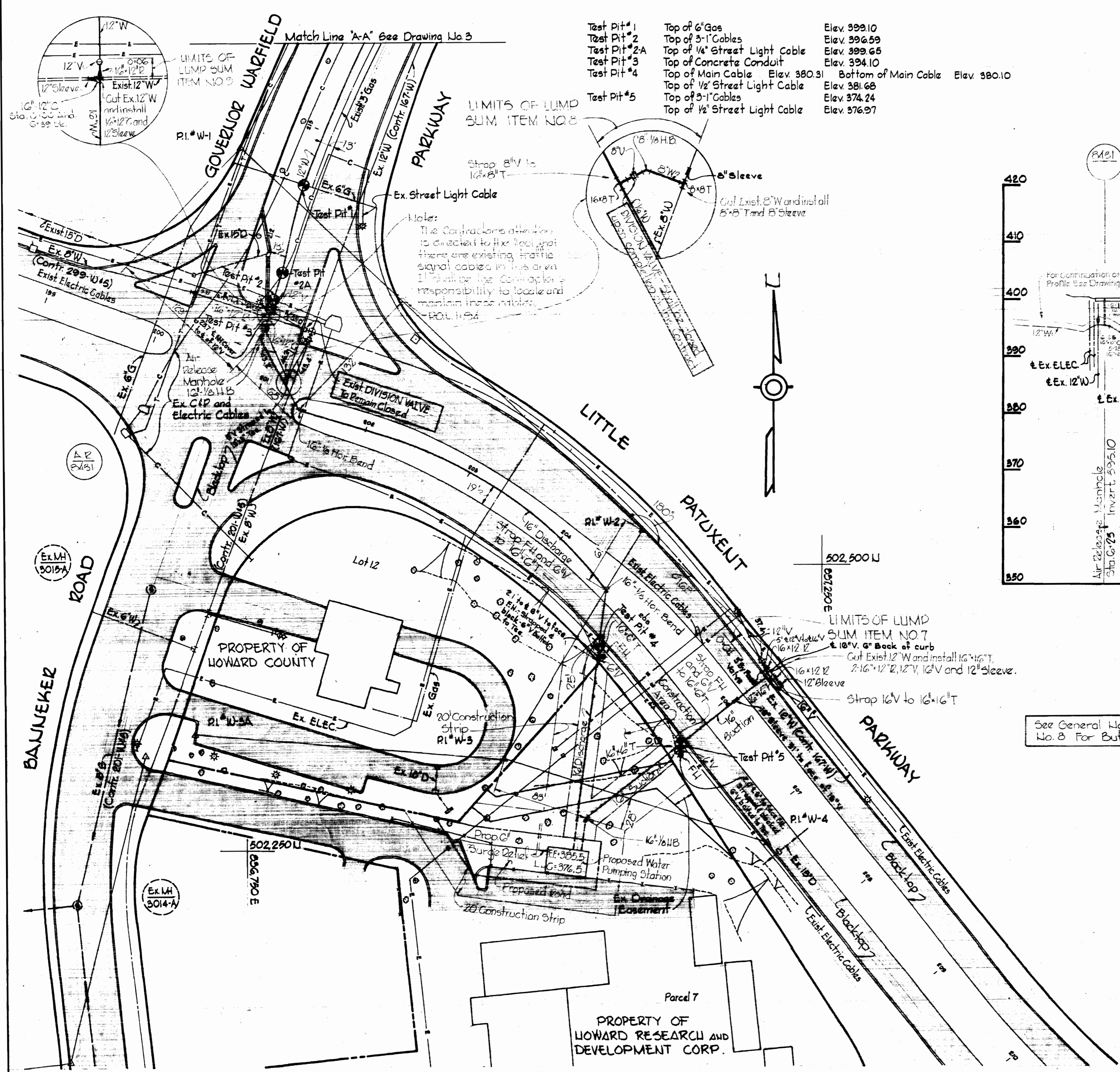
CONTRACT NO. 581-W

LOCATION PLAN

COLUMBIA WATER PUMPING STATION

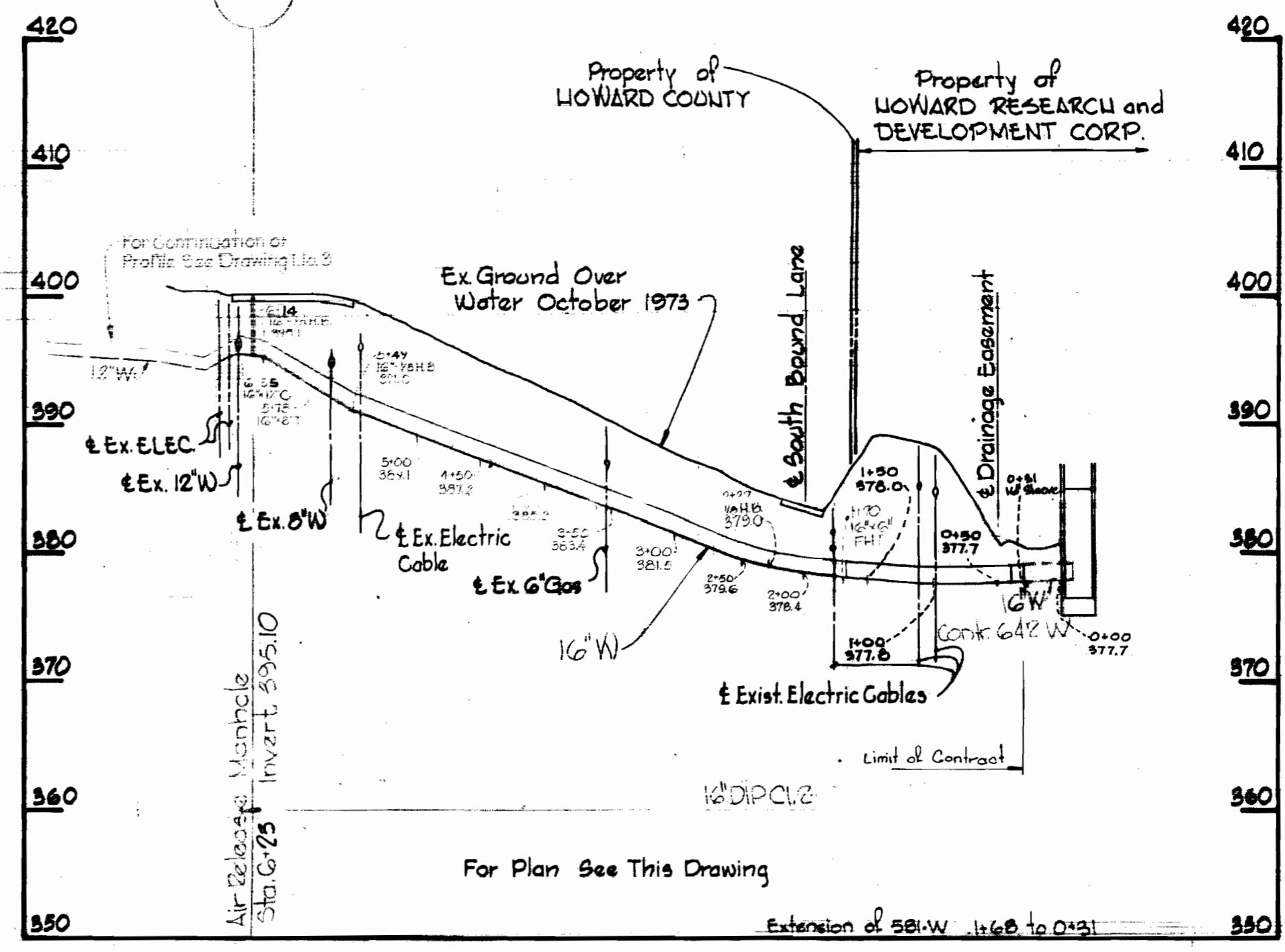
DRAWING NO. 1 OF 3	SCALE 1"=2000'
--------------------	----------------

WS 581-W/1



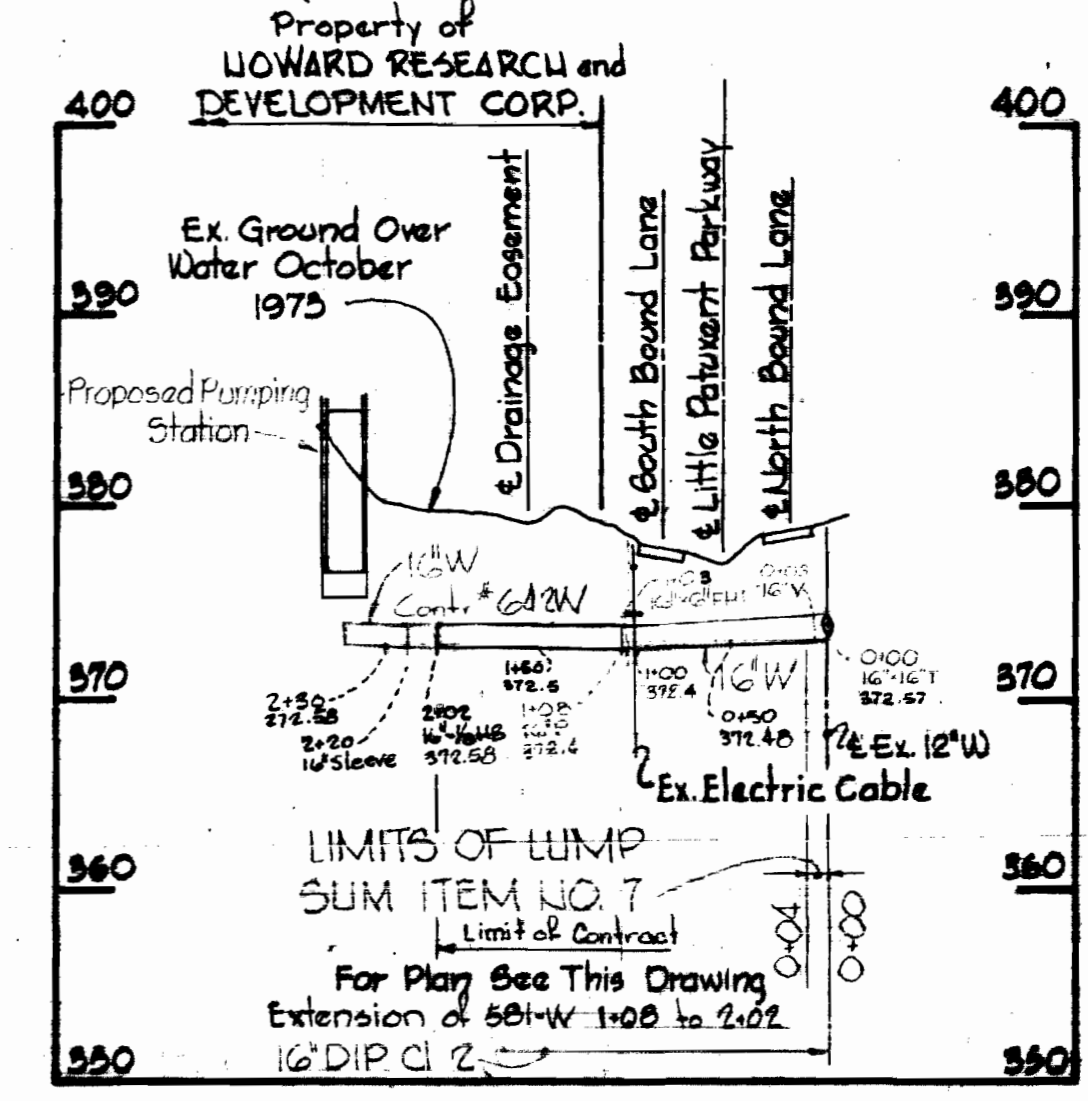
Test Pit #1	Top of 6" Gas	Elev. 399.10
Test Pit #2	Top of 3-1" Cables	Elev. 396.59
Test Pit #2A	Top of 1/4" Street Light Cable	Elev. 399.65
Test Pit #3	Top of Concrete Conduit	Elev. 394.10
Test Pit #4	Top of Main Cable	Elev. 380.31
	Bottom of Main Cable	Elev. 380.10
	Top of 1/2" Street Light Cable	Elev. 381.68
Test Pit #5	Top of 3-1" Cables	Elev. 374.24
	Top of 1/2" Street Light Cable	Elev. 376.97

**16" DISCHARGE**



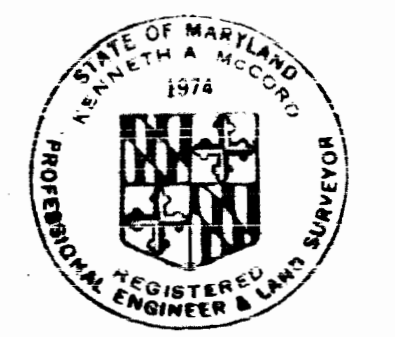
PROFILE: Scale: H:1"=100'  
V:1"=10'

**16" SUCTION**



PROFILE: Scale: H:1"=100'  
V:1"=10'

PLAN Scale: 1"=30'



*Kenneth M. Lind*

Water Main For  
Columbia Water Pumping Station  
Project No. 8056  
Contract No. 581-W

WHITMAN, REQUARDT & ASSOCIATES  
ENGINEERS  
1304 ST. PAUL ST.  
BALTIMORE, MARYLAND

DEPARTMENT OF PUBLIC WORKS  
HOWARD COUNTY, MARYLAND  
9-13-74  
DATE

CONTRACT NO. 581-W

PLAN AND  
PROFILE

COLUMBIA WATER  
PUMPING STATION

DRAWING NO. 2 OF 3  
SCALE AS SHOWN

W. O. 6568-2

P.B. #2491, 5191 September 23, 1974 AS BUILT

WS 581-W/2