

VICINITY MAP  
Scale: 1"=2000'

GENERAL NOTES

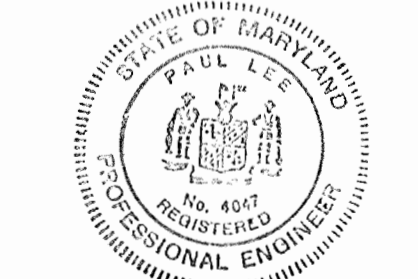
1. Approximate location of existing mains are shown. The contractor shall take all precautions to protect existing mains and services and maintain uninterrupted supply. Any damage incurred shall be repaired immediately.
2. All pipe elevations shown are  $\odot$  elevations.
3. The contractor shall locate existing utilities a minimum of two weeks in advance of construction operations in vicinity of utilities.
4. For all standard details see standards bound in specifications.
5. Clear all utilities by a minimum of 6'; clear all poles by 2'-0" minimum or tunnel as required.
6. The contractor shall provide a joint in all sewer mains within 2'-0" of exterior manhole walls.
7. All manholes shall be 4'-0" inside diameter.
8. All water mains to have a minimum of 3 1/2' of cover unless otherwise noted.
9. Block all fittings with concrete, see standards bound in specifications.
10. Bury line elevations on fire hydrants shall be set to the elevations shown on the drawings.
11. All fire hydrants shall be strapped to the tee and shall be battressed with concrete in accordance with standard details.
12. All horizontal controls are based on Maryland State Datum.
13. All vertical controls are based on U.S.G.S. Datum.

Village Green Shopping Center  
Alva J. Ramsburg Jr.  
10-04

M.C.A. Traverse \*G01  
P.K. nail set in curb joint  
N 4016.38  
E 5472.88  
El. 384.35

M.C.A. Traverse \*G02  
P.K. nail set in curb joint  
N 5418.03  
E 5612.47  
El. 387.51

QUANTITIES	
8" Sewer	1009 L.F.
6" Sewer	216 L.F.
8" Water	2027 L.F.
6" Water	112 L.F.
Fire Hydrants	5



Paul Lee  
PAUL LEE  
1/3/74  
DATE

Chatham Gardens Apts.  
Section 1  
Contract No. 574-D-W/S

MCA ENGINEERING CORP.  
1020 CROMWELL BRIDGE RD.  
BALTO., MARYLAND 21204

DEPARTMENT OF PUBLIC WORKS  
HOWARD COUNTY, MARYLAND  
6.4.74  
DATE  
W.O. Albert  
CHIEF BUREAU OF WATER AND SEWER

CONTRACT NO. 574-D-W/S

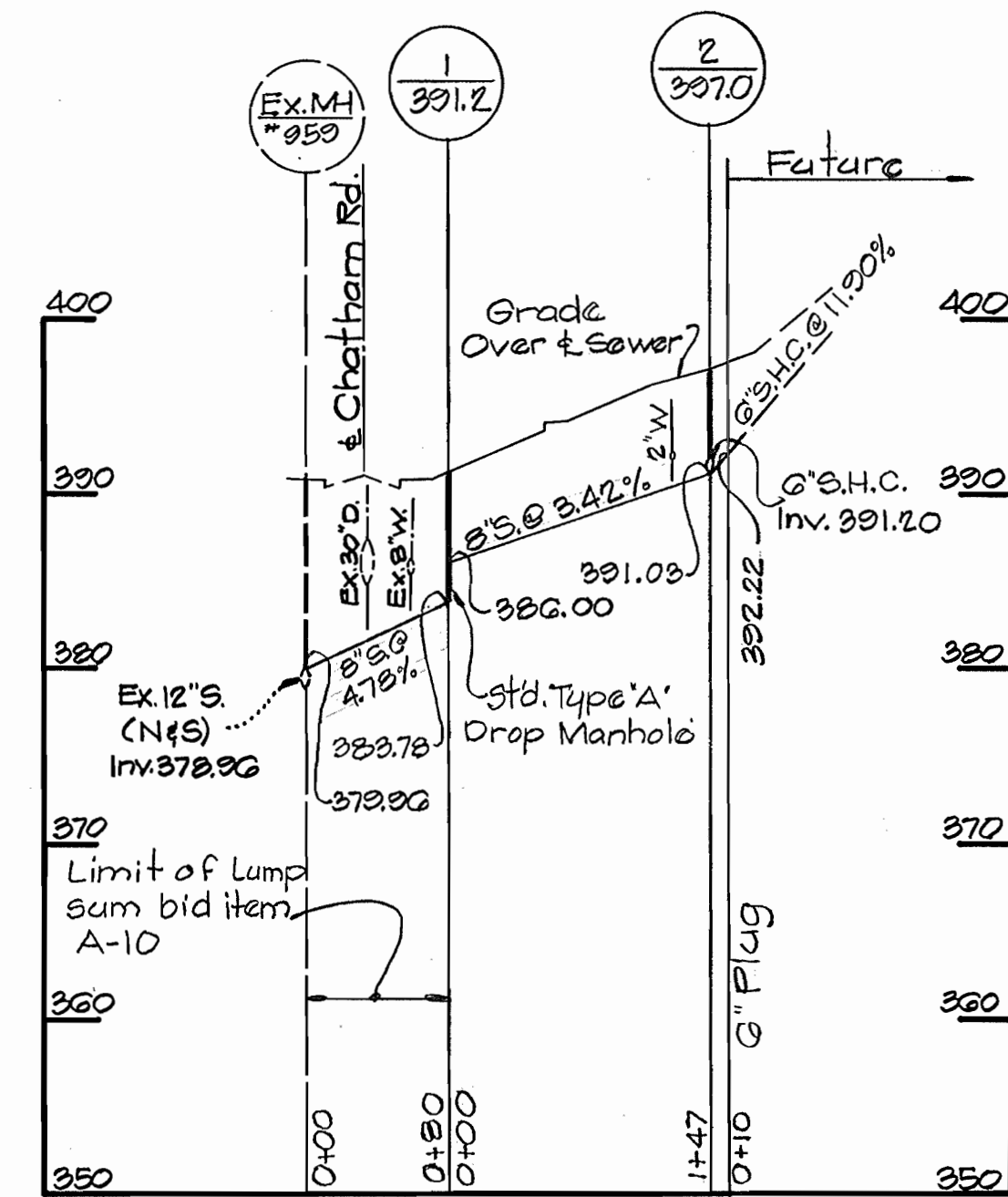
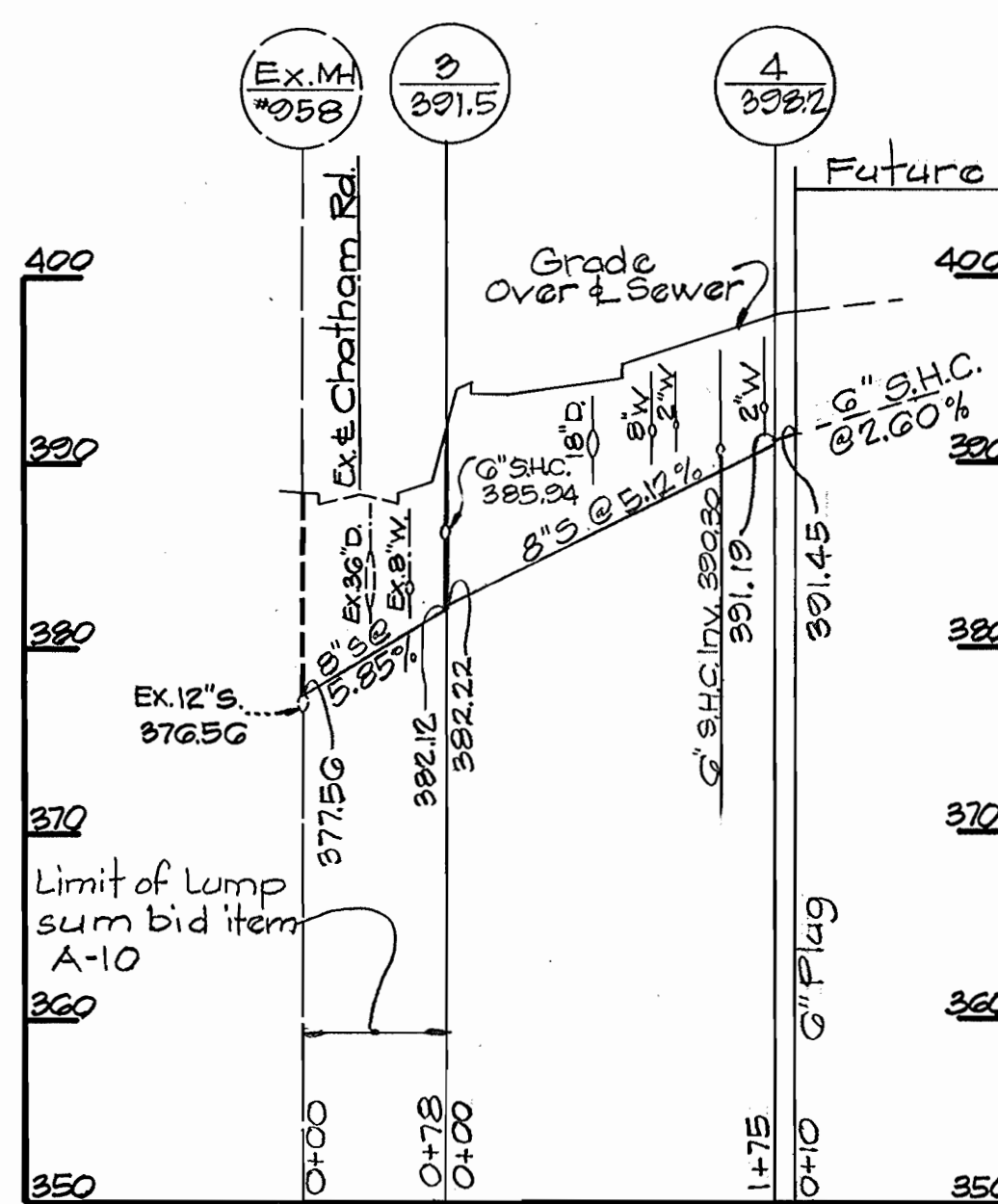
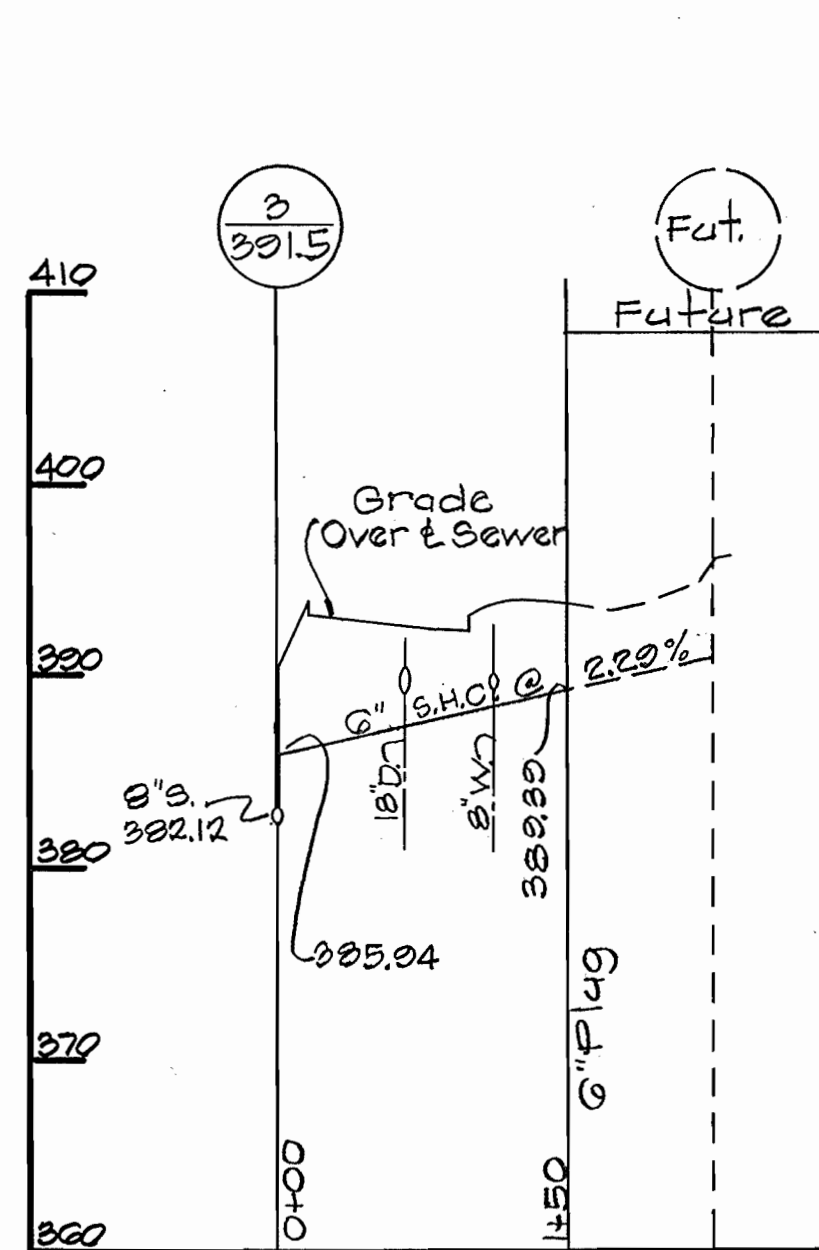
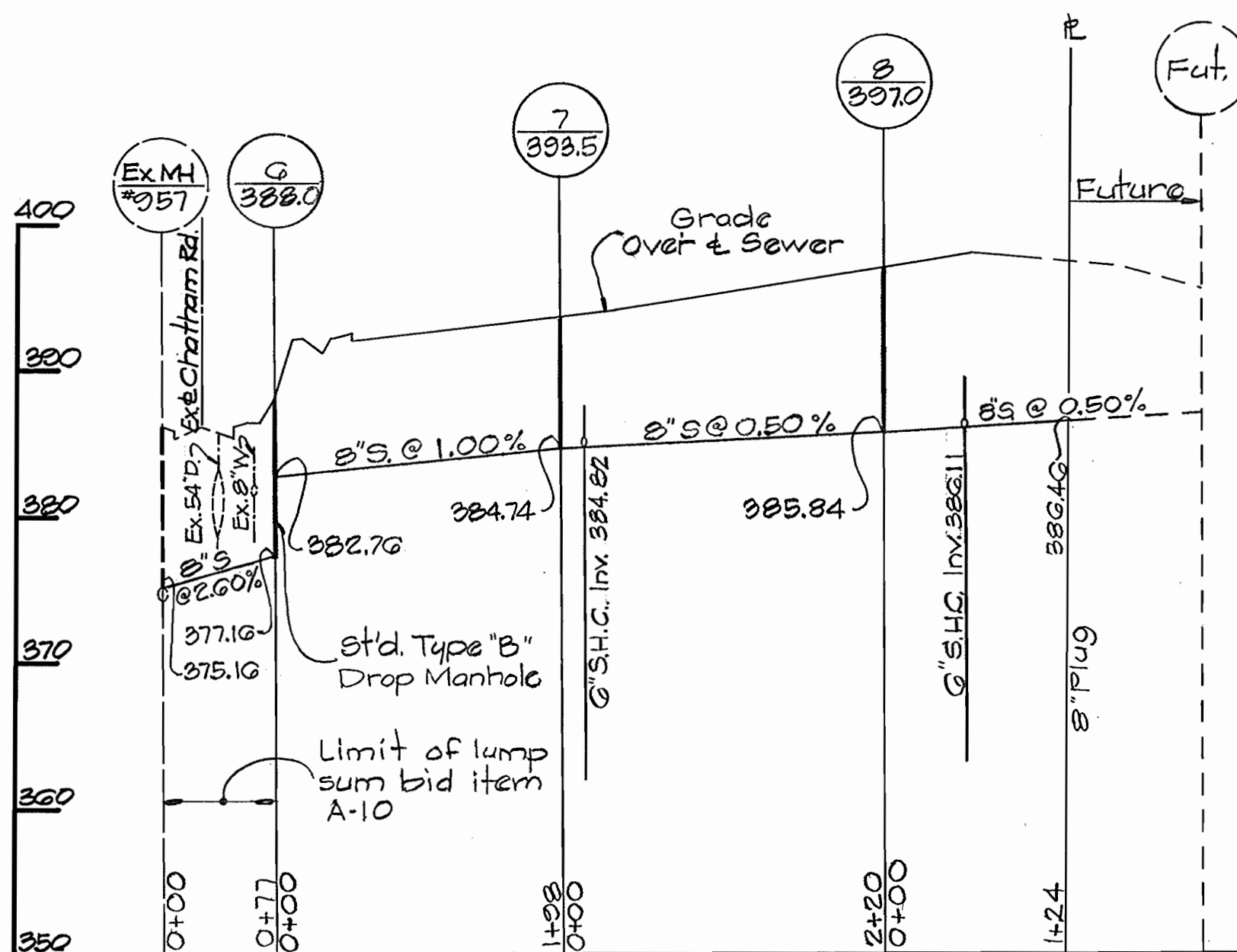
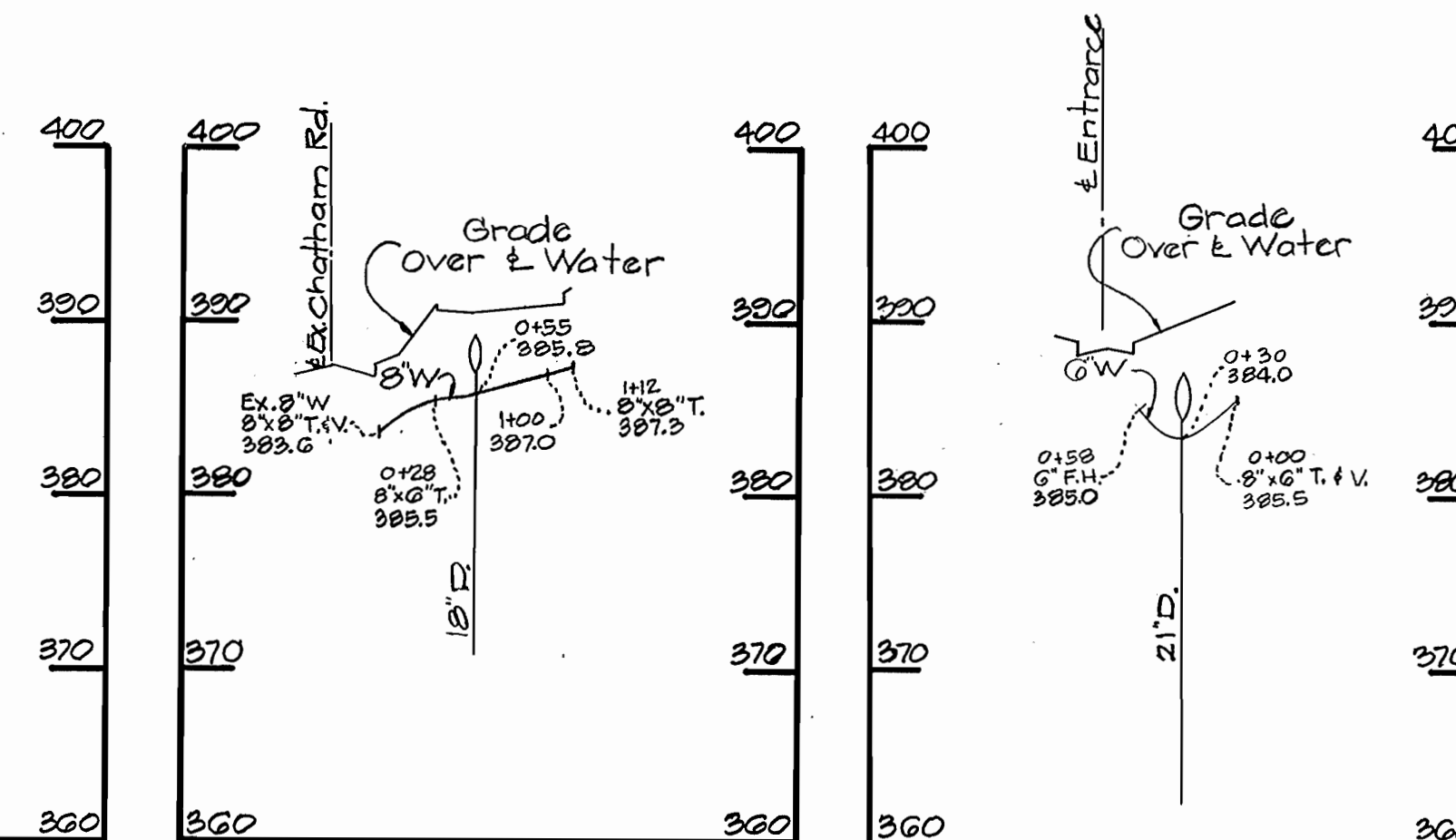
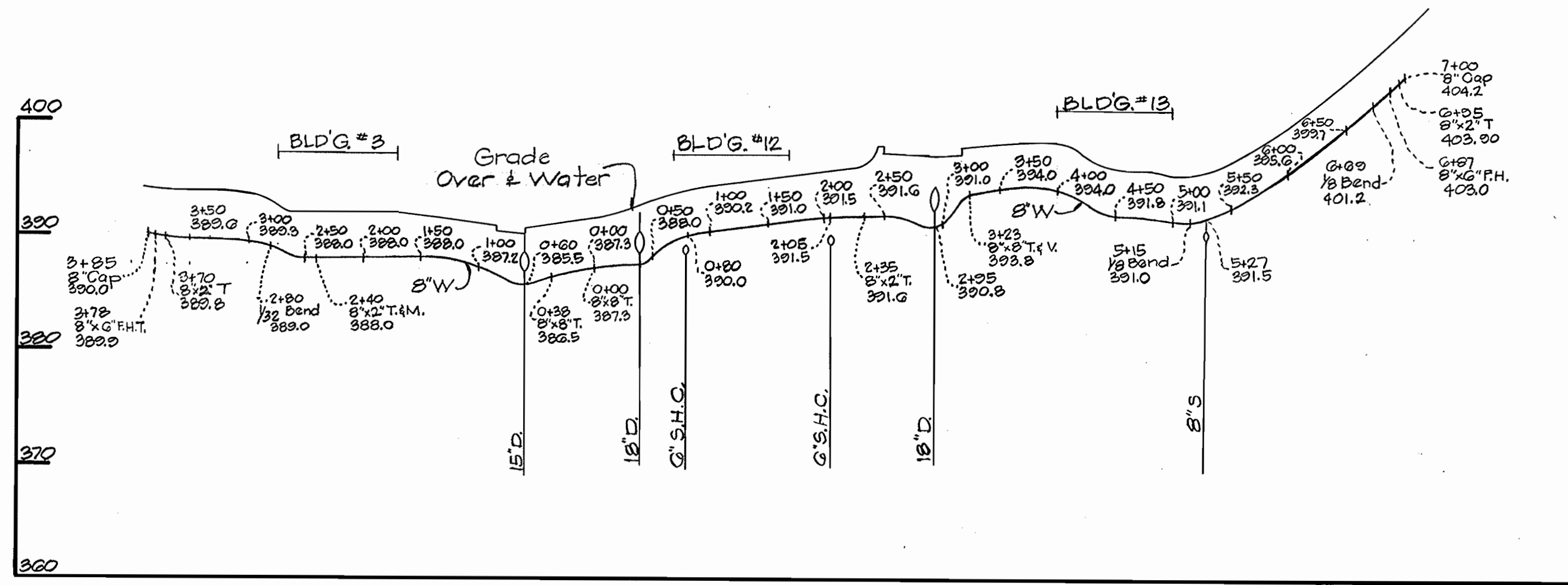
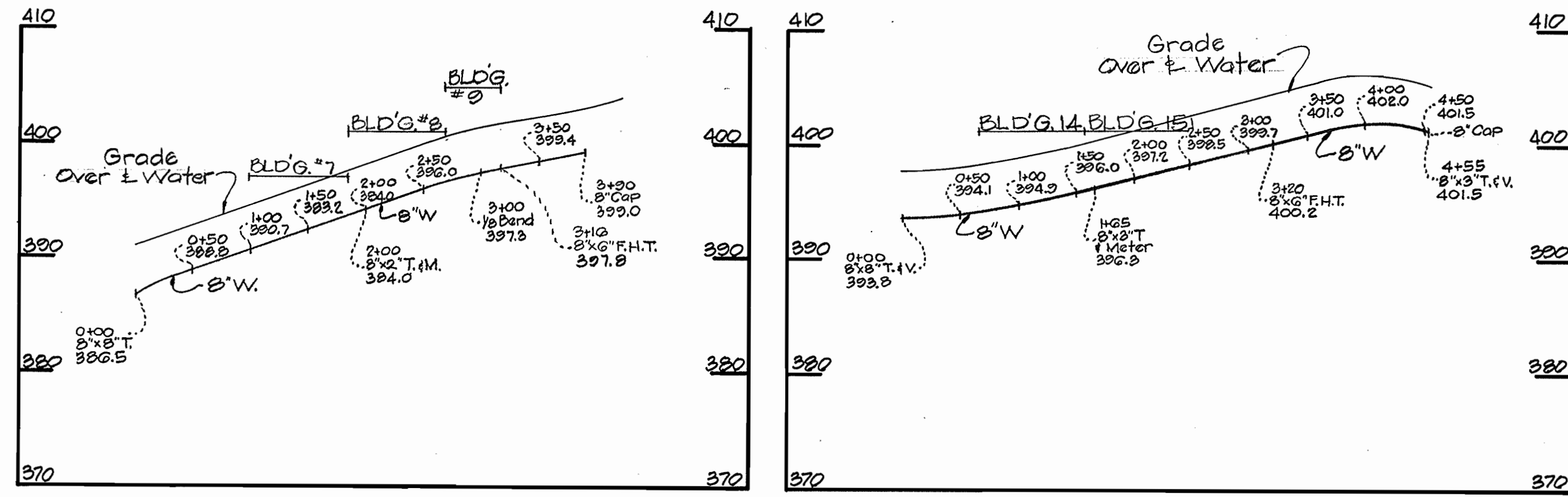
PLAN OF  
WATER & SEWER MAINS

ELECTION DISTRICT  
ELLCOTT CITY NO.2

DRAWING NO. 1	SCALE AS SHOWN
OF 2	

As Built 3-31-75

05 574 W/S/1



Paul Lee  
PAUL LEE  
1/3/74  
DATE

Chatham Gardens Apts.  
Section 1  
Contract No. 574-D-W&S

MCA ENGINEERING CORP.  
1020 CROMWELL BRIDGE RD.  
BALTO., MARYLAND 21204

DEPARTMENT OF PUBLIC WORKS  
HOWARD COUNTY, MARYLAND  
6-A-74  
DATE  
W. O. Farrell  
CHIEF - BUREAU OF WATER AND SEWER

CONTRACT NO. 574-D-W&S

PROFILES OF  
WATER & SEWER MAINS

ELECTION DISTRICT  
ELlicott CITY NO. 2

DRAWING  
NO. 2  
OF 2  
SCALE  
HOR. 1"=100'  
VERT. 1"=10'