

GENERAL NOTES

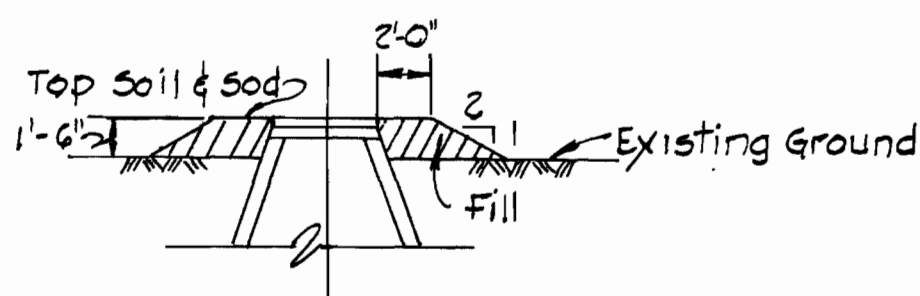
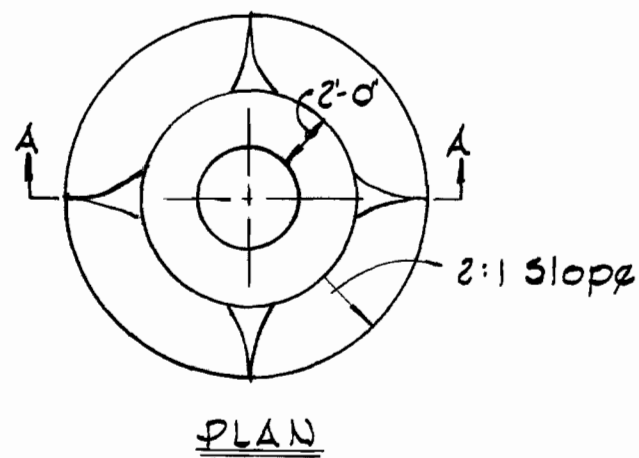
1. Approximate locations of existing utilities are shown. The Contractor shall take all necessary precautions to protect the existing utilities and to maintain uninterrupted service. Any damage incurred due to the Contractor's operation shall be repaired immediately at the Contractor's expense.
2. All pipe elevations shown are invert elevations.
3. The Contractor shall locate existing utilities well in advance of construction activities.
4. See standard details bound in specifications.
5. Clear all utilities by a minimum of 6 inches. Clear all utility poles by 2'-0" minimum or tunnel as required. Any costs incurred to the Contractor for tunneling or bracing poles shall be included in unit prices bid for excavation.
6. The Contractor shall provide a pipe joint in all sewer mains within 2'-0" of exterior manhole walls.
7. All manholes shall be 4'-0" inside diameter, unless otherwise noted.
8. Buttress or anchor all water main fittings with concrete.
9. All water mains to have a minimum of 3.5' cover unless otherwise noted.
10. All fire hydrants shall be strapped to the tee and shall be buttressed with concrete in accordance with standard details. Cost of strapping fire hydrants and valves to be included in the unit price bid for furnishing and installing fire hydrants.
11. Bury line elevations on fire hydrants shall be set to the elevations shown on the plan.
12. All horizontal and vertical controls are based on the Maryland State Grid System.

BENCH MARKS

P & J B.M. #4 Elev. 148.60
Rim of sanitary manhole 23' south of P.I. "L-7"

P & J B.M. #6 Elev. 142.12
60" d nail set in 6" hickory 30' south of P.I. "L-12"

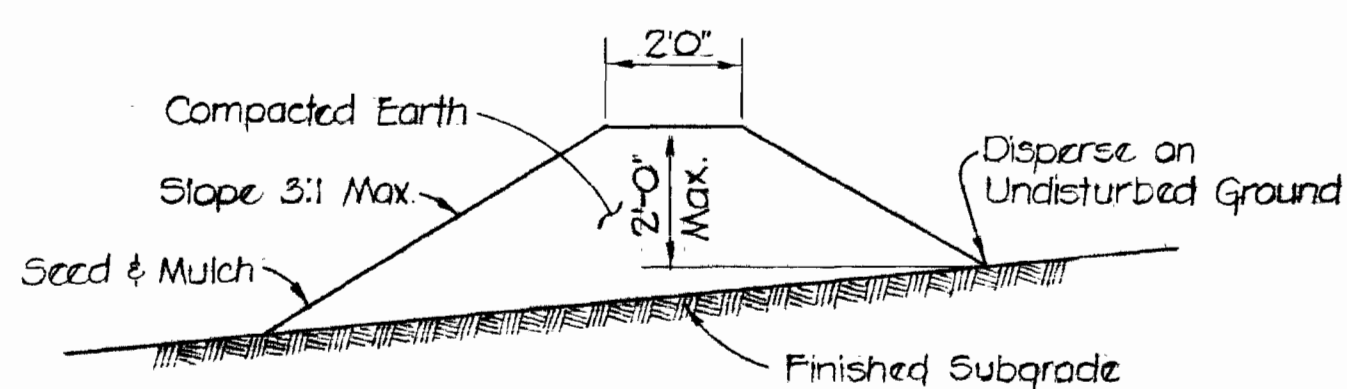
P & J B.M. #7 Elev. 168.73
60" d nail set in 6" tree 68' south of P.I. "L-13"



FILL AT MANHOLE

No Scale
Manhole 302 thru 303

BROOKDALE INDUSTRIAL PARK
PARCEL "B"



TEMPORARY EARTH DIVERSION BERM

NO SCALE

Diversion berms are required every 300 feet on continuous slopes of 4% or greater. The berms shall conform to the typical section shown hereon and shall be constructed across the construction areas immediately after the back-filling of the pipe trench and prior to placing stabilization in order to prevent erosion of the backfilled areas.

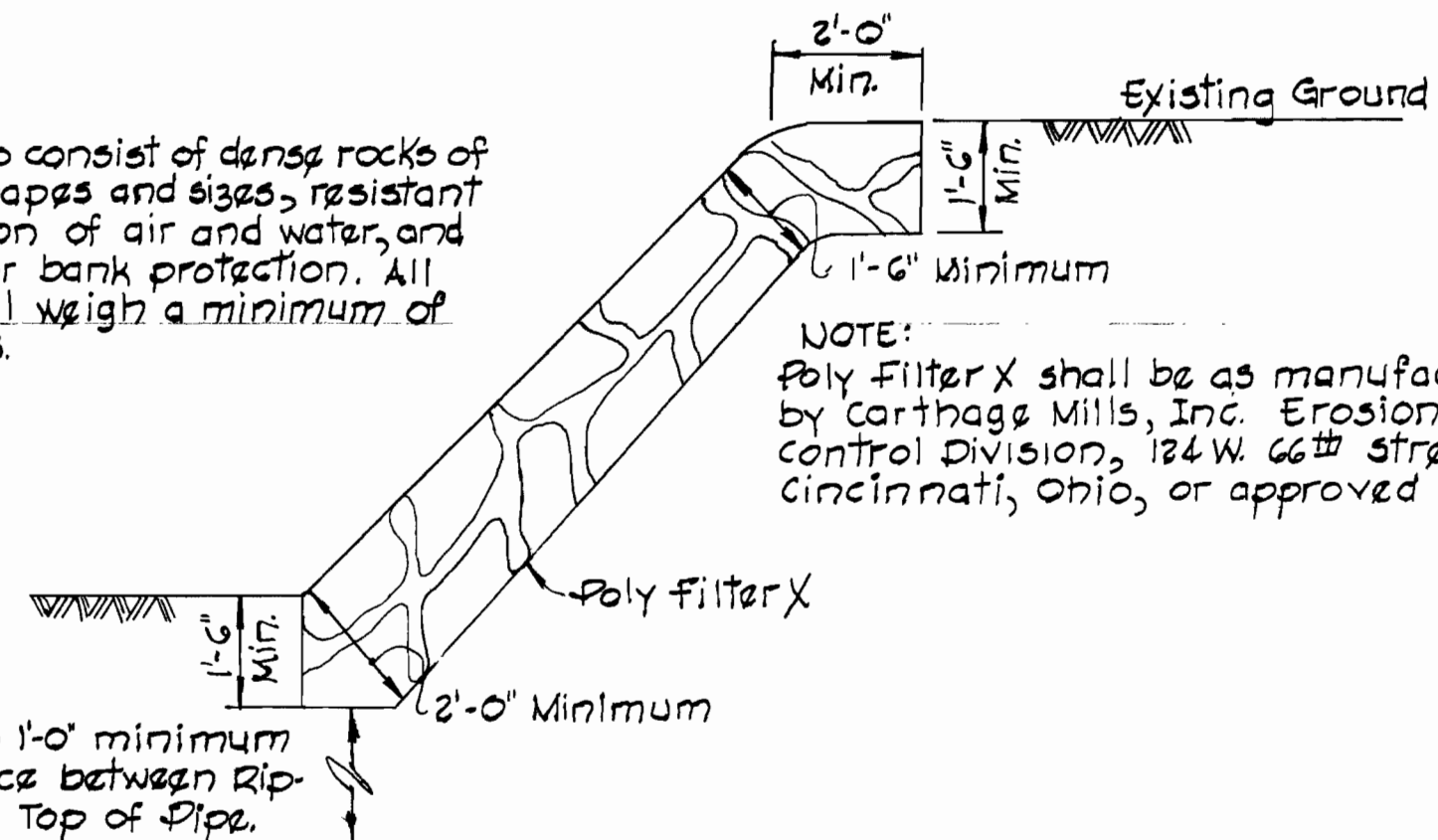
NOTE:

Rip-Rap to consist of dense rocks of random shapes and sizes, resistant to the action of air and water, and suitable for bank protection. All rocks shall weigh a minimum of 150 pounds.

Maintain 1'-0" minimum clearance between Rip-Rap and Top of Pipe.

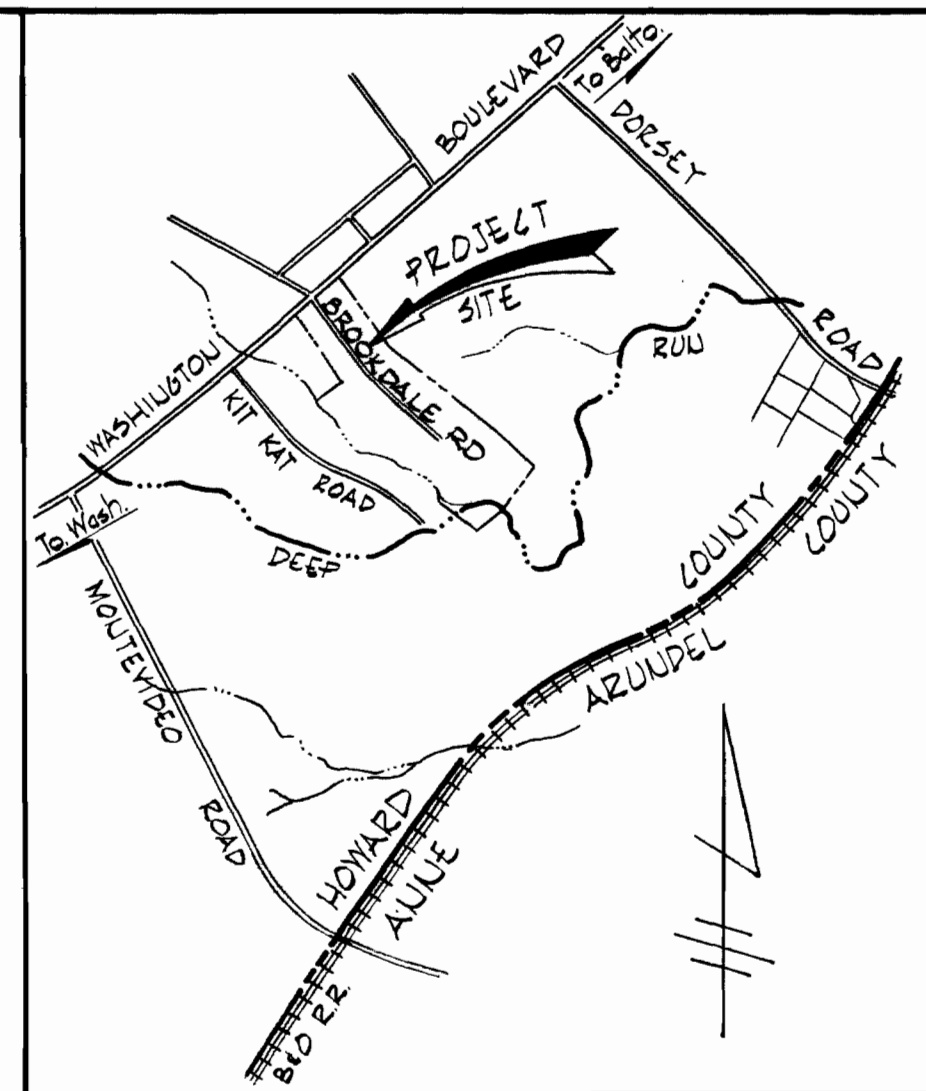
RIP-RAP DETAIL

Scale: 3/8" = 1'-0"



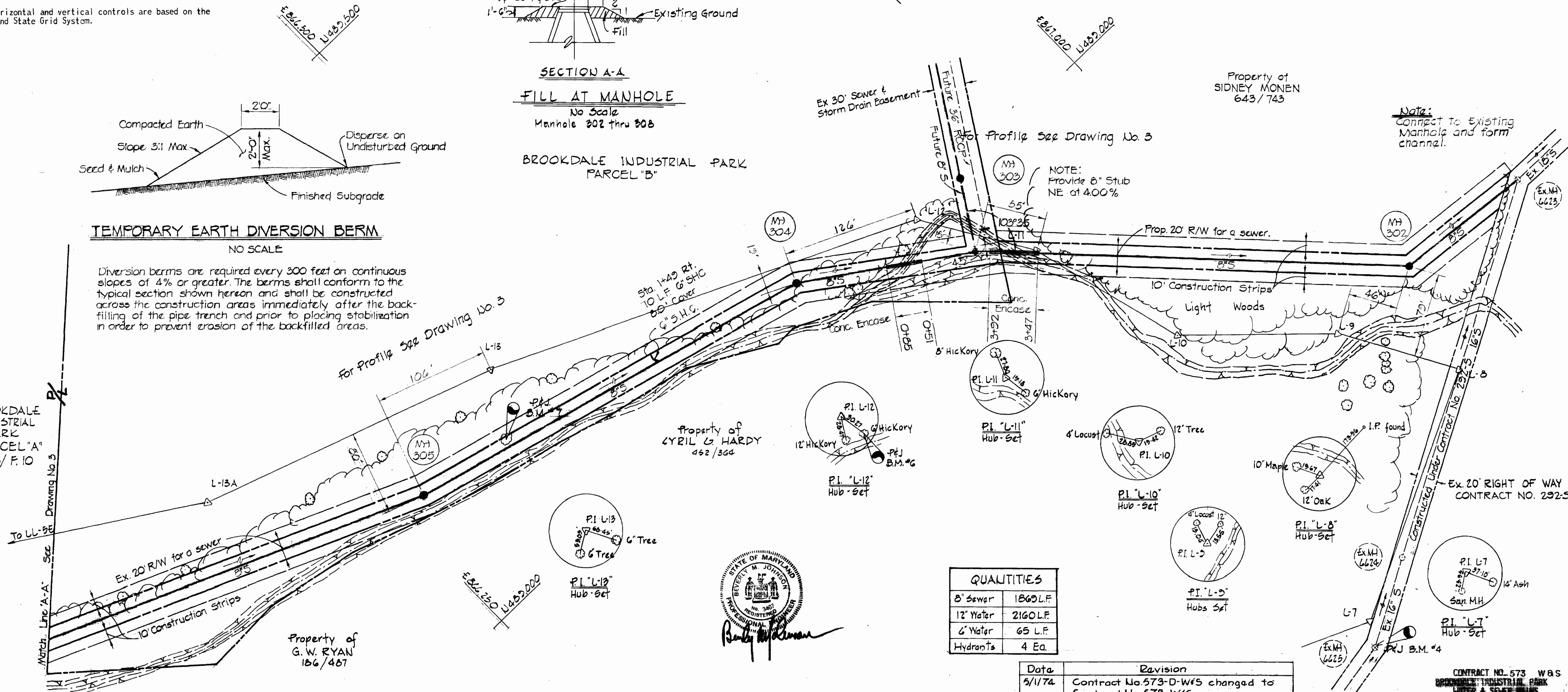
NOTE:

Poly Filter X shall be as manufactured by Carthage Mills, Inc. Erosion Control Division, 124 W. 66th Street, Cincinnati, Ohio, or approved equal.



VICINITY MAP

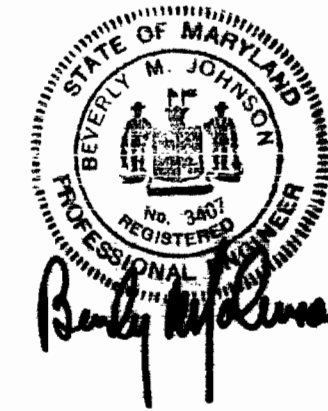
SCALE: 1" = 200'



QUANTITIES

8" Sewer	1860 L.F.
12" Water	2160 L.F.
6" Water	65 L.F.
Hydrants	4 Ea.

Date	Revision
5/1/74	Contract No. 573-D-W/S changed to Contract No. 573-W/S



PURDUM & JESCHKE
ENGINEERS
1023 N. CALVERT ST.
BALTIMORE, MARYLAND

DEPARTMENT OF PUBLIC WORKS
HOWARD COUNTY, MARYLAND
4-2-74
W. O. Fallick
CHIEF BUREAU OF ENGINEERING

CONTRACT NO. 573 W-S

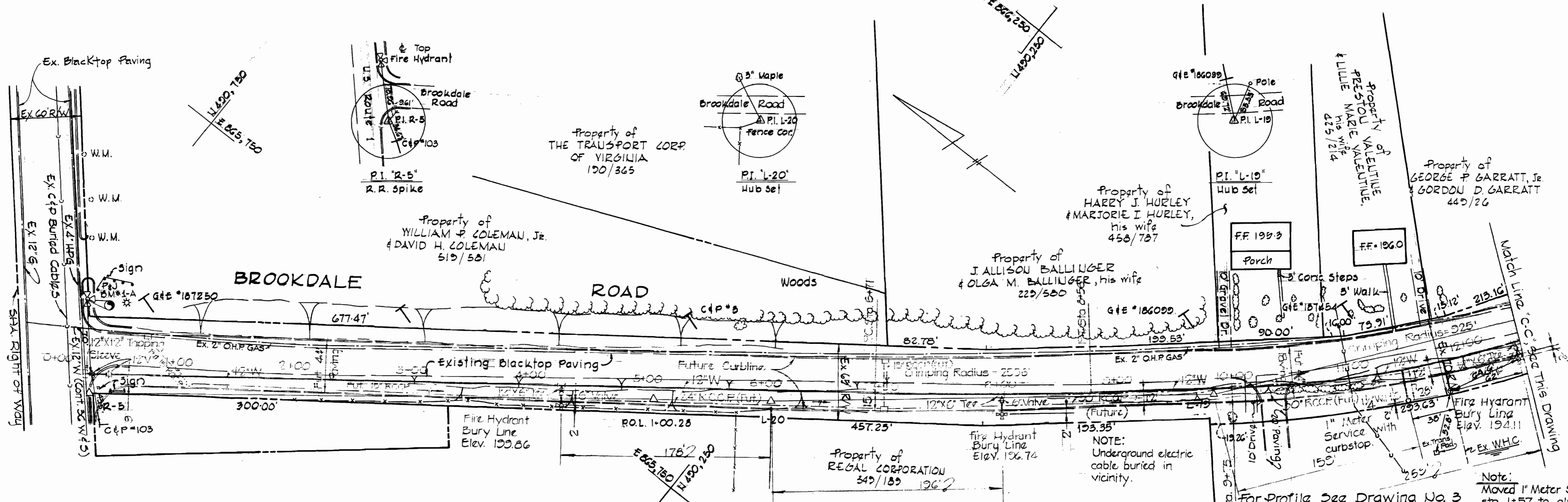
WATER & SEWER MAINS

BROOKDALE INDUSTRIAL PARK
CLARENCE ELECTRIC DISTRICT NO. 1
HOWARD COUNTY, MARYLAND

DRAWING NO. 1 OF 3
SCALE 1" = 50'

Checked by
Drafted by

U.S. ROUTE 1
(WASHINGTON BOULEVARD)

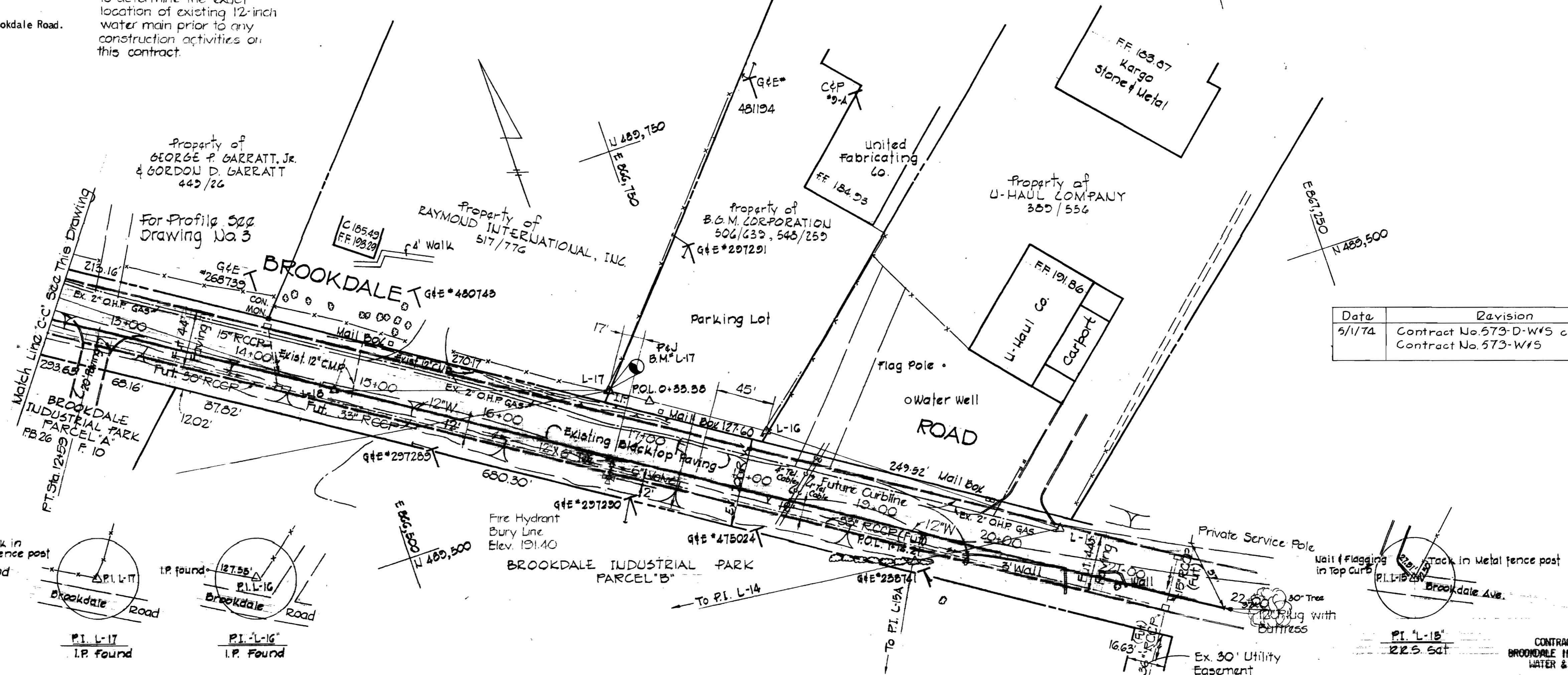
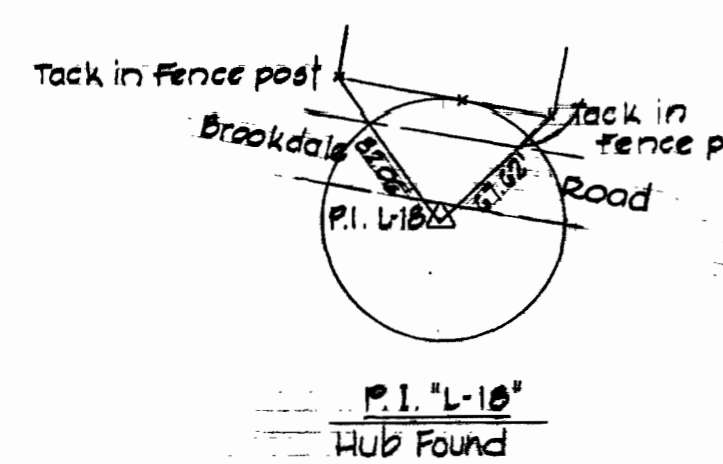


BENCH MARKS

P & J BM 1-A Elev. 209.03
Fire hydrant at intersection U.S. Route 1 & Brookdale Road.
P & J BM L-17 Elev. 192.88
I.P. corner of fence United Fabricating Company.
P & J Traverse Station P & J L-17

NOTE:
Contractor shall test pit to determine the exact location of existing 12-inch water main prior to any construction activities on this contract.

Note:
Moved 1" Meter Service to sta. 1+57 to alignment with existing water service connection from ET & WNC Building



Date	Revision
5/1/74	Contract No. 573-D-W15 changed to Contract No. 573-W15

PURDUM & JESCHKE
ENGINEERS
1023 N. CALVERT ST.
BALTIMORE, MARYLAND

DEPARTMENT OF PUBLIC WORKS
HOWARD COUNTY, MARYLAND
DATE 4-2-74
W.O. Pillot
CHIEF BUREAU OF ENGINEERING

CONTRACT NO. 573 W & S

PLAN OF
WATER MAINS

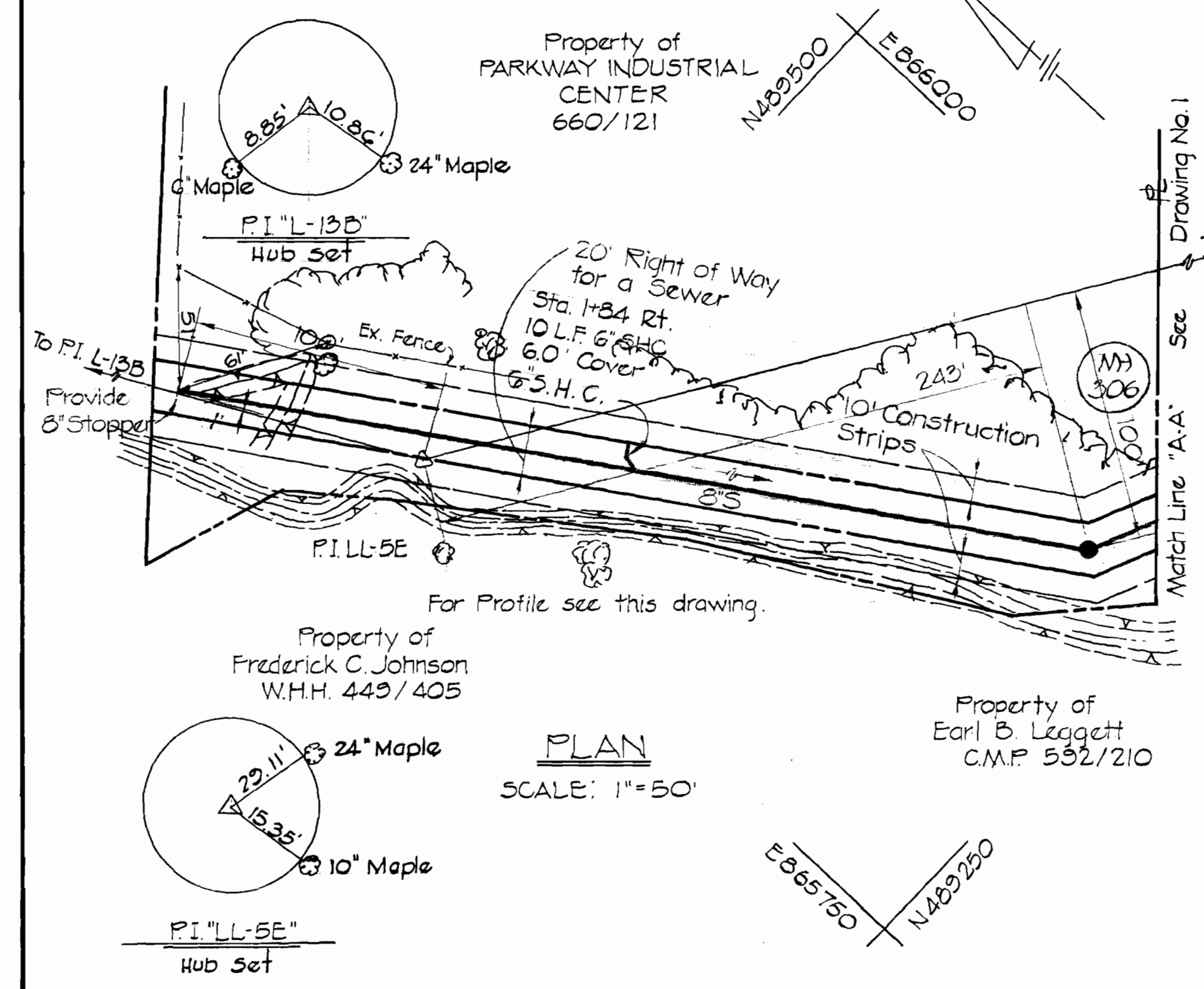
BROOKDALE INDUSTRIAL PARK
ELKRIDGE ELECTION DISTRICT NO. I
HOWARD COUNTY, MARYLAND

DRAWING
NO. 2
OF 3

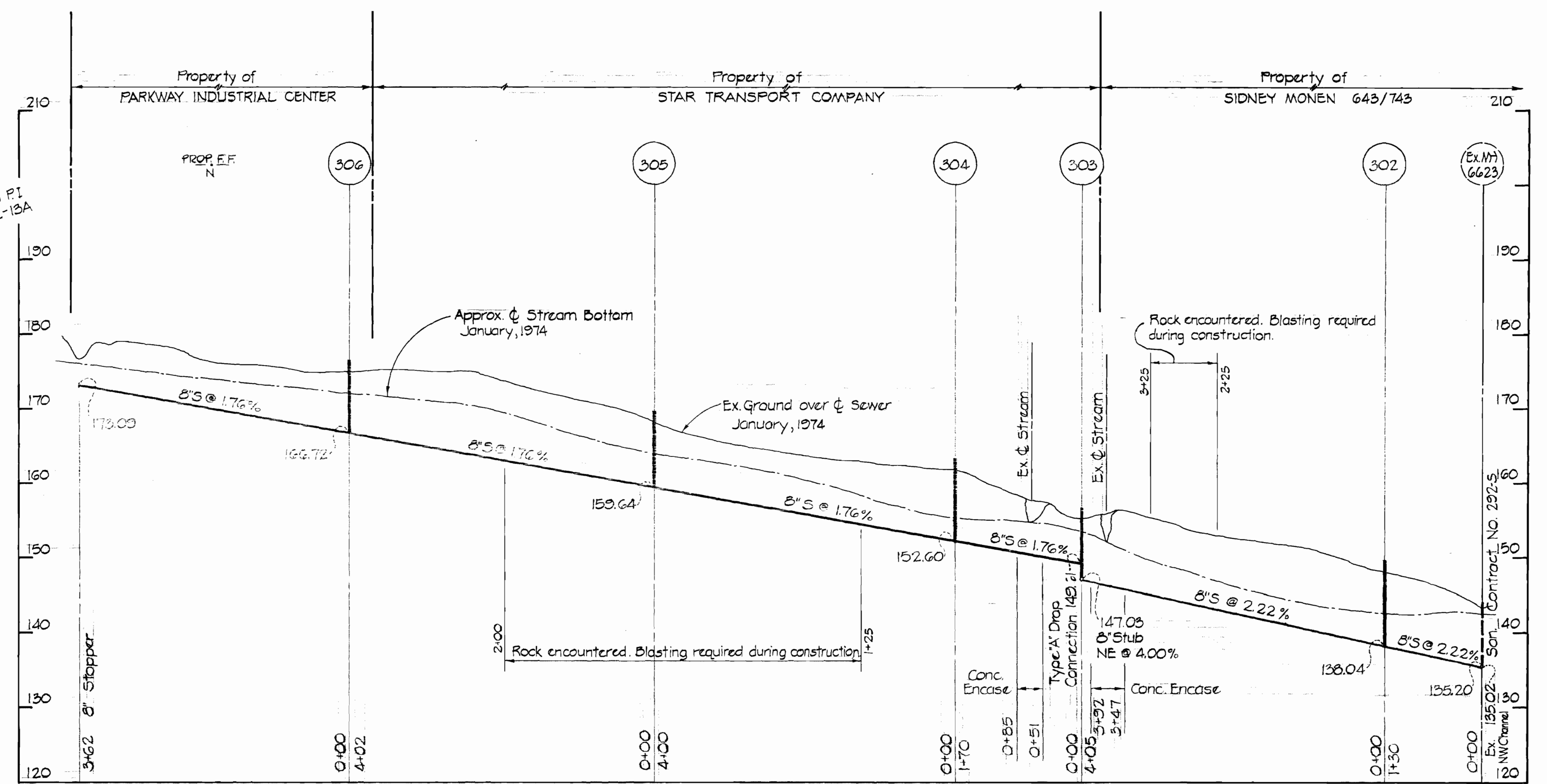
SCALE
1"=50'

Designed: T.M.
Drafted: A.E.L.
Checked: J.M.F.

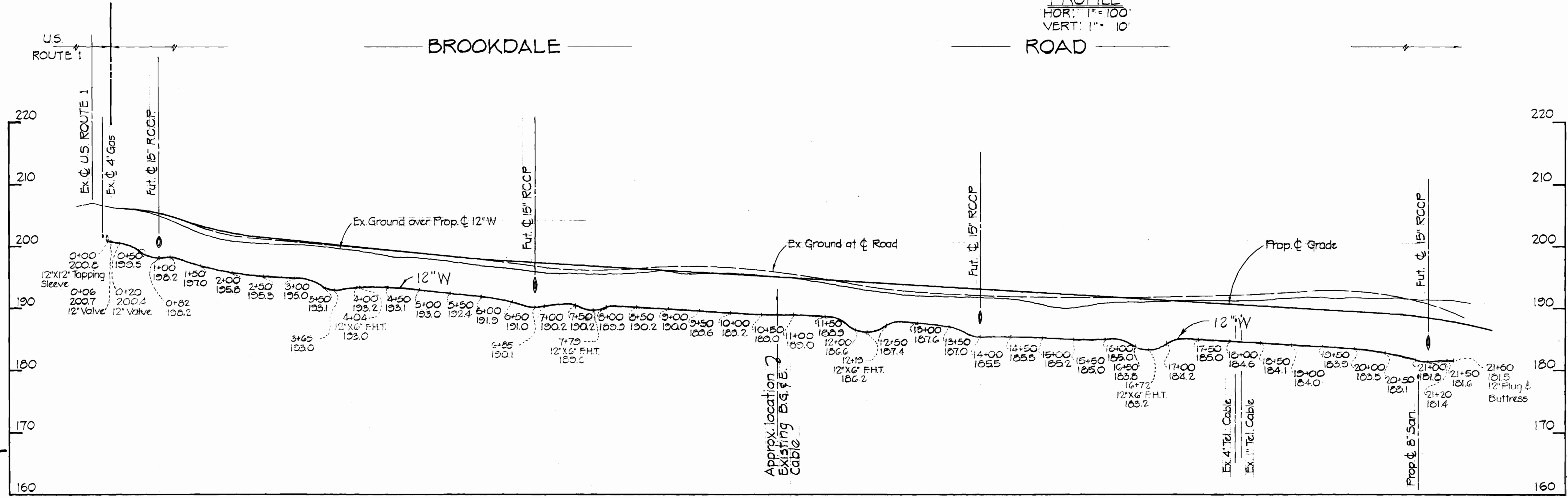
BROOKDALE INDUSTRIAL PARK
PARCEL "A"
P.B. 26 / F.10



PLAN
SCALE: 1" = 50'



PROFILE
HOR: 1" = 100'
VERT: 1" = 10'



PROFILE
HOR: 1" = 100'
VERT: 1" = 10'

Date	Revision
5/1/74	Contract No. 573-D-W15 changed to Contract No. 573-W15

CONTRACT NO. 573 W & S
BROOKDALE INDUSTRIAL PARK
WATER & SEWER MAINS



PURDUM & JESCHKE
ENGINEERS
1023 N. CALVERT ST.
BALTIMORE, MARYLAND

DEPARTMENT OF PUBLIC WORKS
HOWARD COUNTY, MARYLAND
DATE: 4-2-74
W. O. Fellert
CHIEF BUREAU OF ENGINEERING

CONTRACT NO. 573 W & S

PLAN AND PROFILE OF
WATER AND SEWER MAINS

BROOKDALE INDUSTRIAL PARK
ELKRIDGE ELECTION DISTRICT NO. I
HOWARD COUNTY, MARYLAND

DRAWING NO. 3 OF 3
SCALE: AS SHOWN
DESIGNED: RRR
DRAFTED: AEL
CHECKED: TRF

WS 573 W&S/3