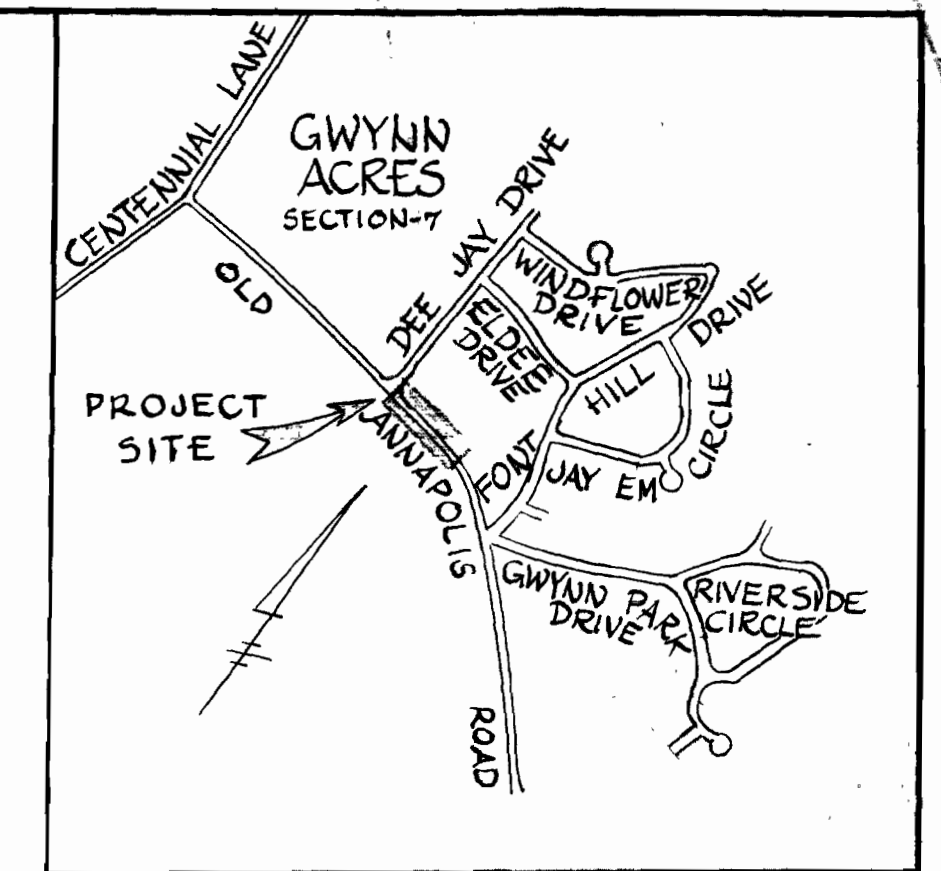
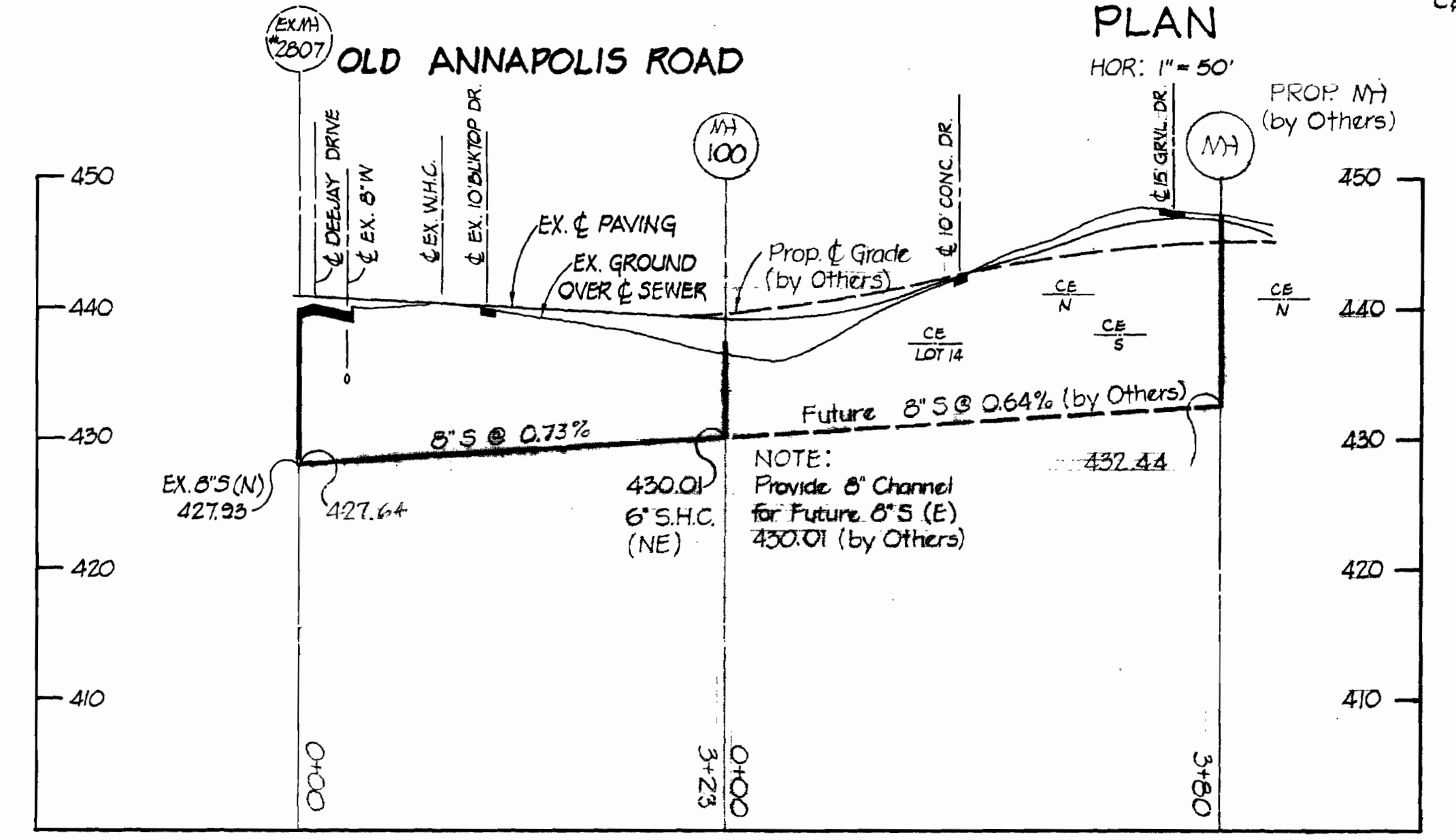
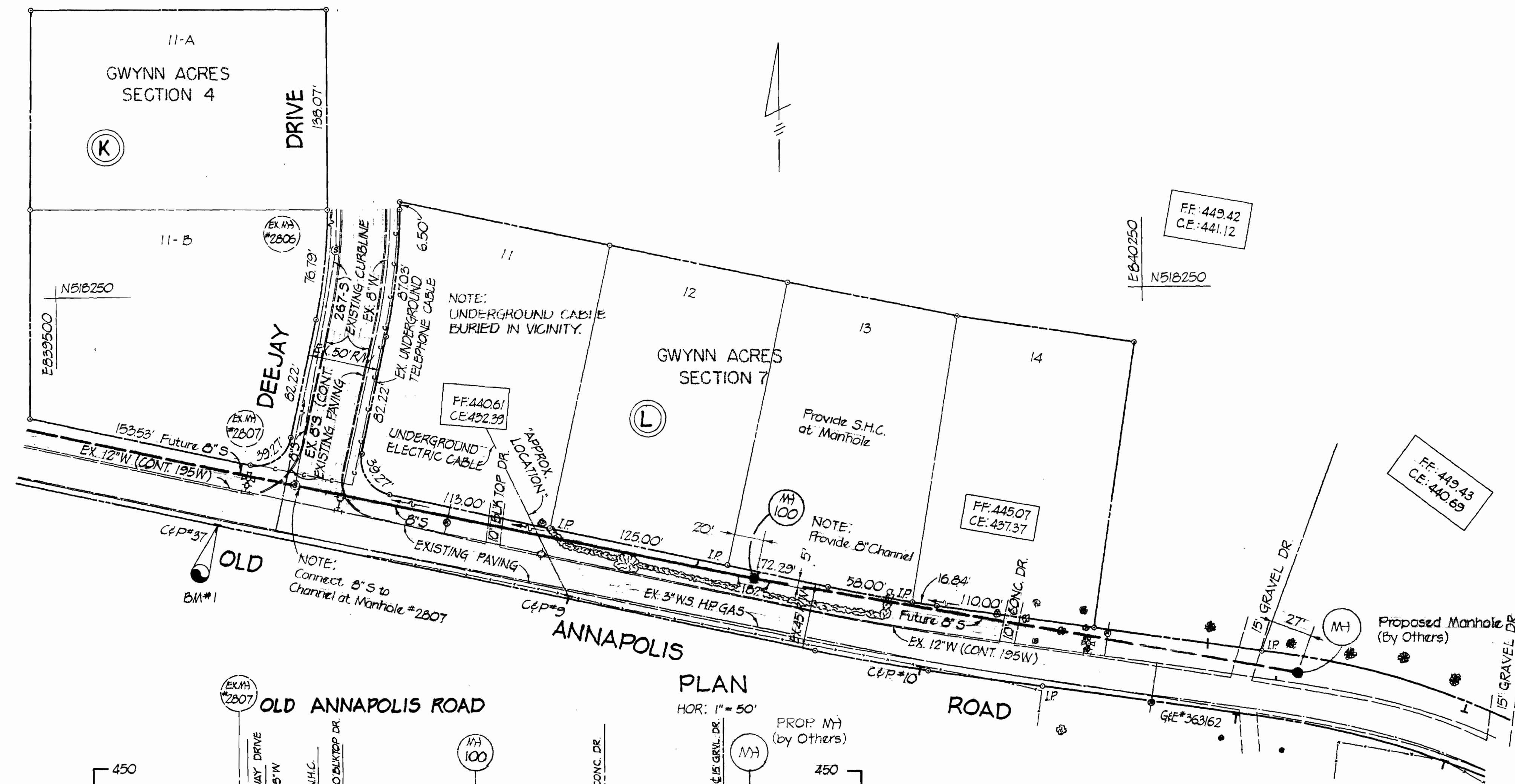


suspense

suspense



VICINITY MAP
Scale 1"=1200'



PROFILE
HOR: 1"=100'
VERT: 1"=10'

QUANTITIES	
8" SEWER	323 L.F.
6" S.H.C.	12 L.F.
MANHOLE	720 V.F.

BENCH MARK
P&J B.M. #1 Elev. 441.640
R.R. Spike in C&P #37 on South Side of
OLD ANNAPOLIS ROAD, 63' West of the
intersection of DEE JAY DRIVE and
OLD ANNAPOLIS ROAD.

GENERAL NOTES

1. Approximate locations of existing utilities are shown. The contractor shall take all necessary precautions to protect the existing utilities and to maintain uninterrupted service. Any damage incurred due to contractor's operations shall be repaired immediately at the contractor's expense.
2. All pipe elevations shown are invert elevations.
3. The contractor shall locate existing utilities a minimum of two weeks in advance of construction operations in the vicinity of utilities.
4. See standard details bound in specifications.
5. Clear all utilities by a minimum of 6 inches. Clear all utility poles by a minimum of 2'-0" minimum or tunnel as required. Any costs incurred to the contractor for tunneling or bracing poles shall be included in unit prices bid for excavation.
6. The contractor shall provide a pipe joint in all sewer mains within 2'-0" of exterior manholes walls.
7. All manholes shall be 4'-0" inside diameter.
8. All horizontal and vertical controls are based on the Maryland State Grid System.



PURDUM & JESCHKE
ENGINEERS
1023 N. CALVERT ST.
BALTIMORE, MARYLAND

DEPARTMENT OF PUBLIC WORKS
HOWARD COUNTY, MARYLAND
12-19-73
DATE

CONTRACT NO. 2572-D-5

PLAN AND PROFILE OF
SEWER MAINS

SEWER MAIN EXTENSION
ELECTRON DISTRICT GAITHER CITY NO 2

DRAWING NO. 1 OF 1
SCALE AS SHOWN
DESIGNED BY [Signature]
CHECKED BY [Signature]