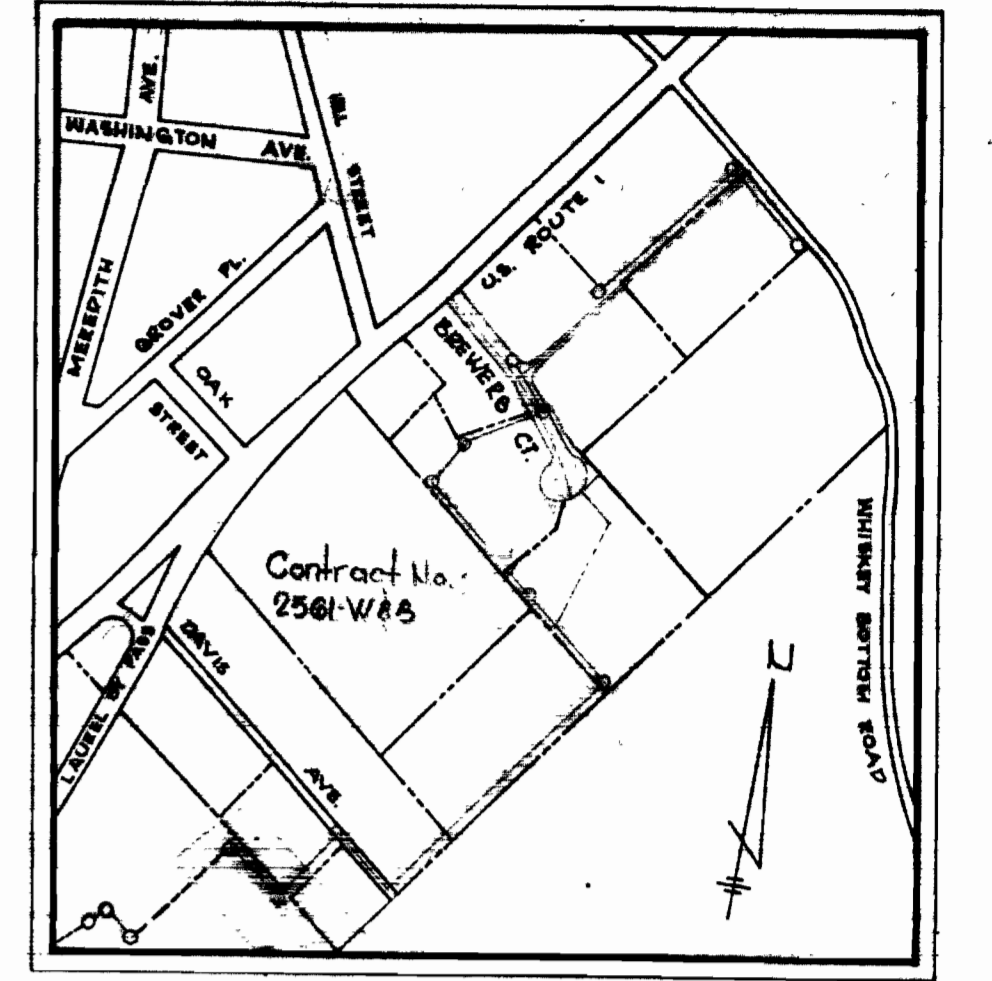


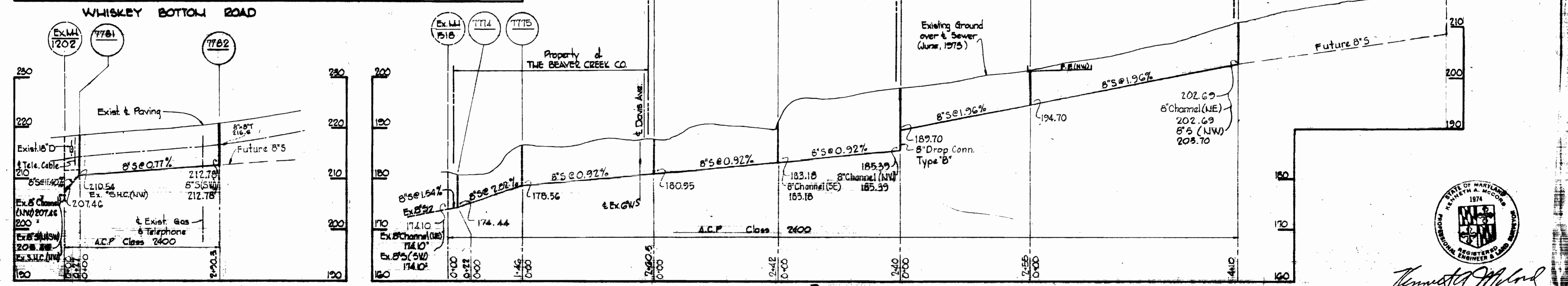
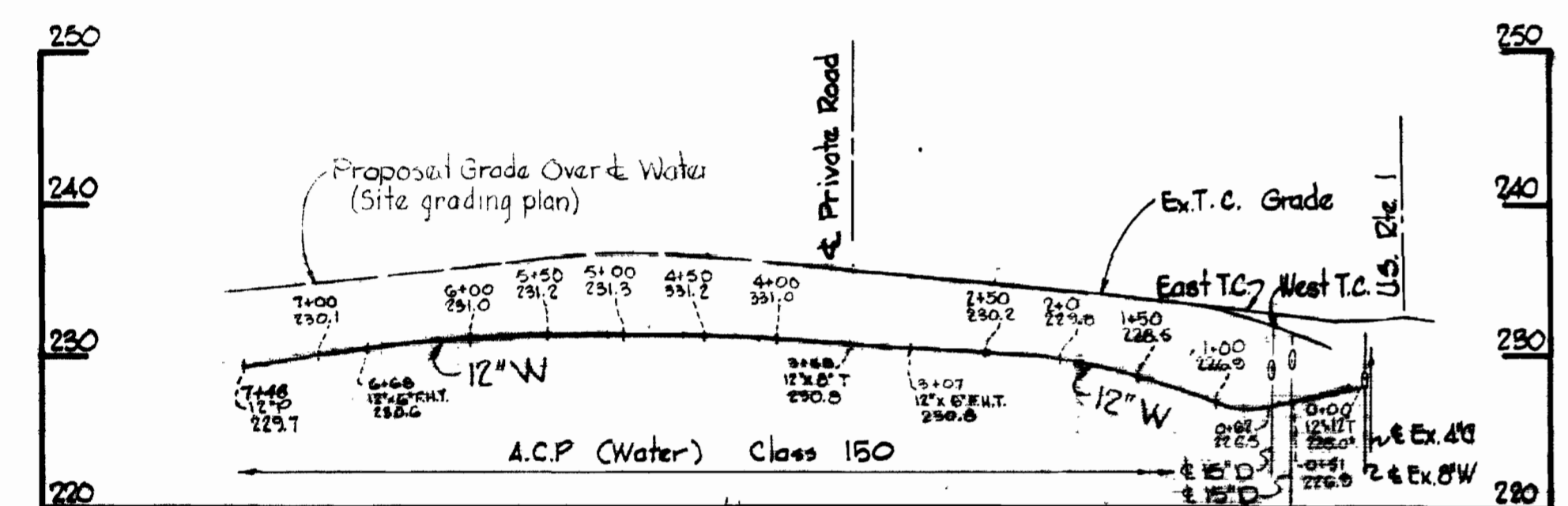
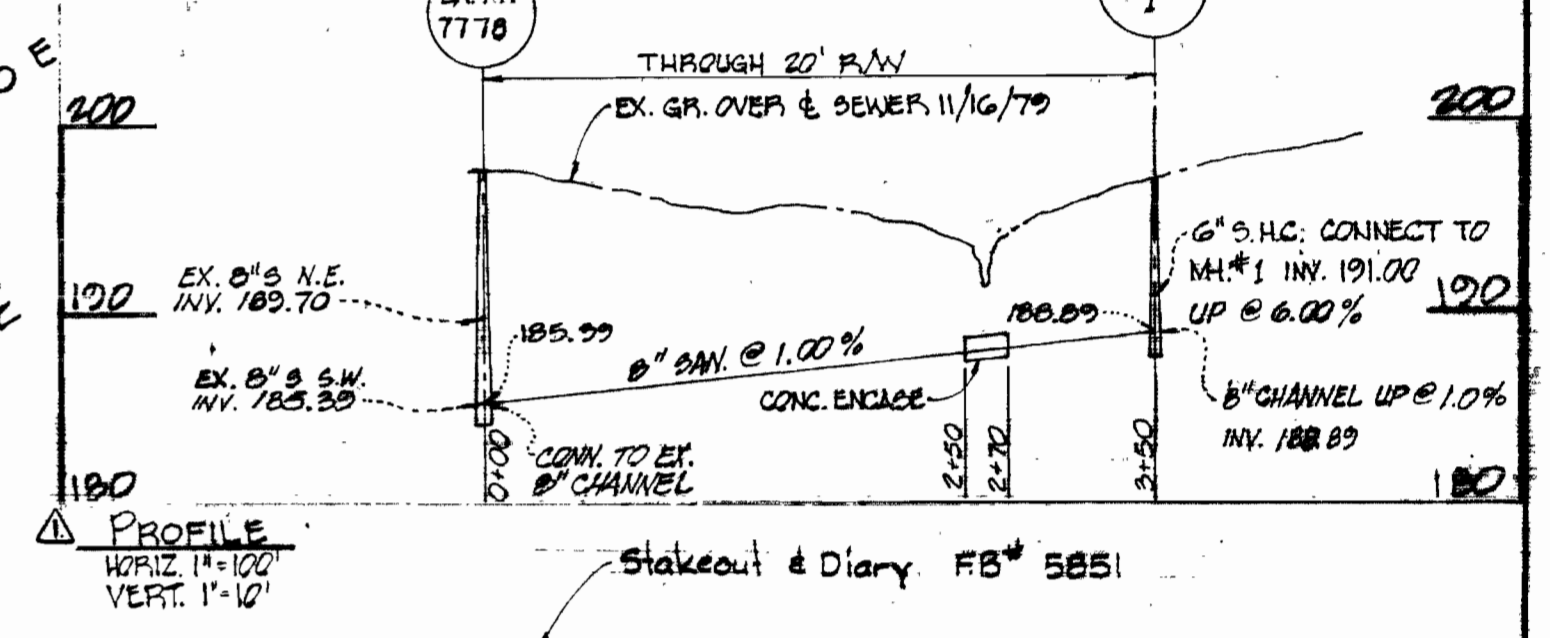
GENERAL NOTES

1. Approximate location of existing mains are shown. The Contractor shall take all necessary precautions to protect existing mains and services and maintain uninterrupted supply. Any damage incurred shall be repaired immediately.
2. All pipe elevations shown are invert elevations.
3. The Contractor shall locate existing utilities a minimum of two weeks in advance of construction operations in vicinity of utilities.
4. For all standard details see standards bound in specifications.
5. Clear all utilities by a minimum of 6'; clear all poles by 2'-0" minimum or tunnel as required.
6. The Contractor shall provide a joint in all sewer mains within 2'-0" of exterior manhole walls.
7. All manholes shall be 4'-0" inside diameter.
8. All water mains to have a minimum of 5 1/2' cover unless otherwise noted.
9. Block all fittings with concrete, see standards bound in specifications.
10. Bury Line elevations on fire hydrants shall be set to the elevations shown on the drawing. Soil around the fire hydrant to be compacted in accordance with Section 5-15 of the Standard Specifications.
11. All fire hydrants shall be strapped to the tee and shall be buttressed with concrete in accordance with standard details.
12. All horizontal and vertical controls are based on Maryland State Datum.
13. Trees are to be protected from damage to maximum extent. Trees located within the construction strip are not to be removed or damaged by the contractor.



VICINITY MAP
Scale: 1" = 600'

Note:
As-Built information by W.R.A. is shown for pipe line work only. Final work was inspected by Howard County.



QUANTITIES		
ITEM	BID	AS-BUILT MATERIAL/SUPPLIER
12" Water	750 LF	748 LF ACP cl. 150 Johns Manville
8" Water	920 LF	922 LF ACP cl. 150 Johns Manville
6" Water	40 LF	13 LF ACP cl. 150 Johns Manville
8" Sewer	3720 LF	3722 LF ACP cl. 2400 Johns Manville
Fire Hydrants	3	3 A.P. Smith



Kenneth A. McCord
Whiskey Bottom Industrial Park
Contract No. 2561-W85

WHITMAN, REQUARDT & ASSOCIATES
ENGINEERS
1304 ST. PAUL ST.
BALTIMORE, MARYLAND

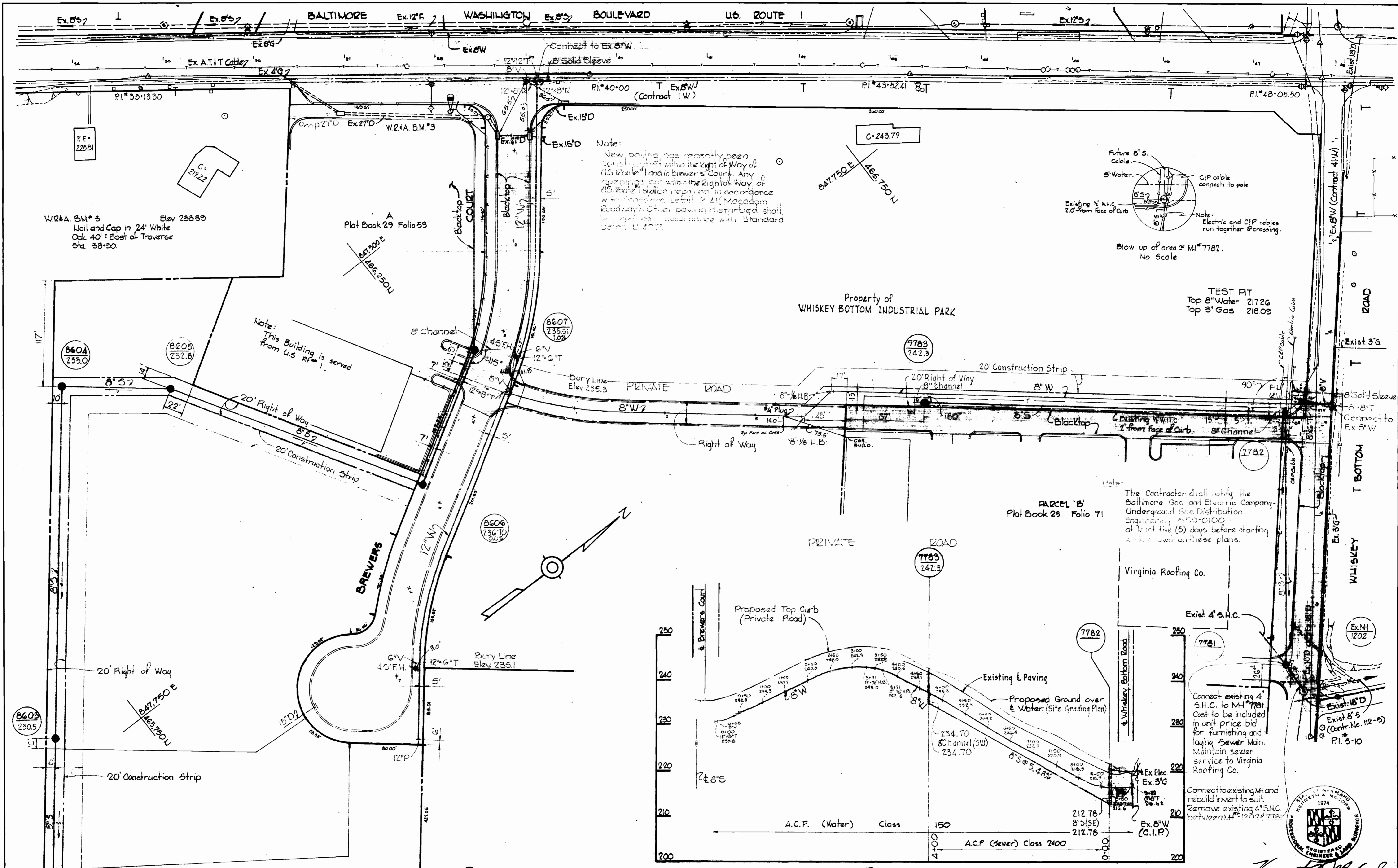
DEPARTMENT OF PUBLIC WORKS
HOWARD COUNTY, MARYLAND
DATE: 11-4-75
W.O. Pelt
CHIEF BUREAU OF ENGINEERING

CONTRACT NO. 2561-W85

PLAN AND PROFILES OF
WATER AND SEWER MAINS

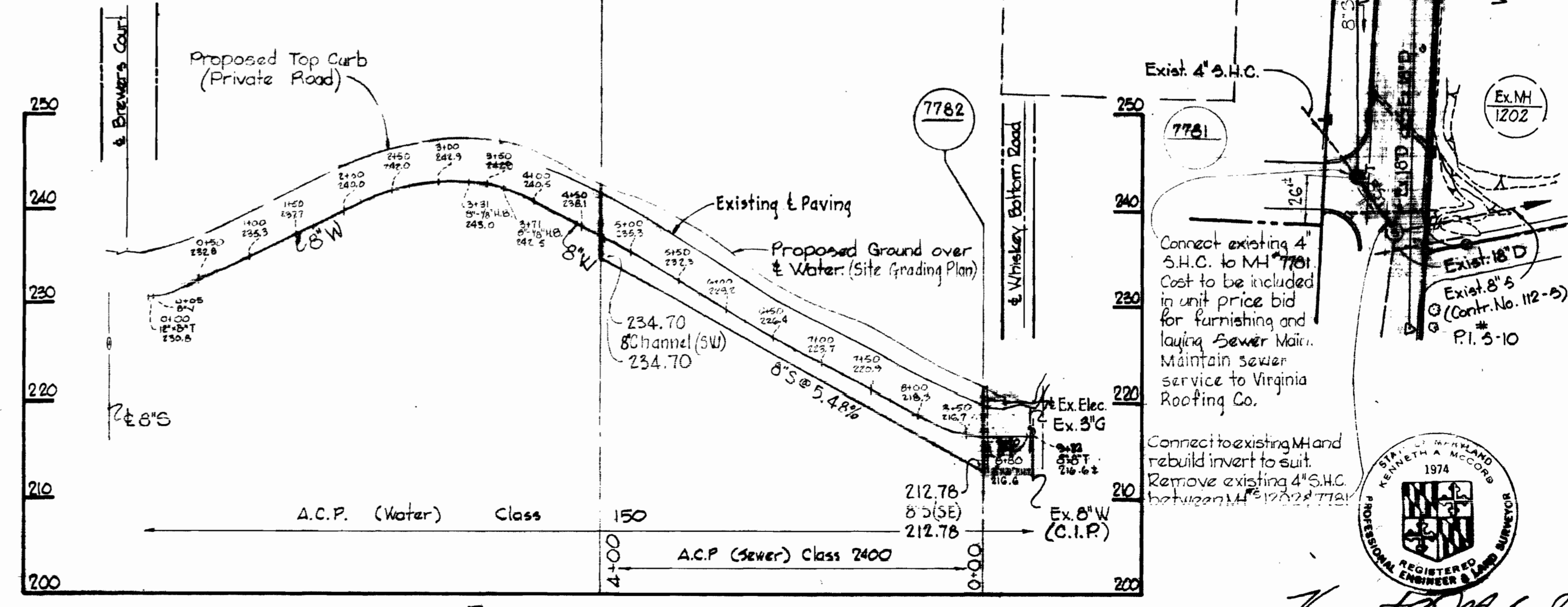
ELECTION DISTRICT
GULFORD NO. 6

DRAWING NO. 1 OF 3
SCALE AS SHOWN



Match Line 'BB' See Drawing No. 3

PLAN
Scale: 1"=50'



PROFILE
Scale: H: 1"=100'
V: 1"=10'

Connect existing 4" S.H.C. to MH 7781. Cost to be included in unit price bid for furnishing and laying Sewer Main. Maintain sewer service to Virginia Roofing Co.

Connect to existing MH and rebuild invert to suit. Remove existing 4" S.H.C. between MH 7782 & 7781.



Kenneth J. McLeod
Whiskey Bottom Industrial Park
Contract No. 2561 W/S

WHITMAN, REQUARDT & ASSOCIATES
ENGINEERS
1304 ST. PAUL ST.
BALTIMORE, MARYLAND

DEPARTMENT OF PUBLIC WORKS
HOWARD COUNTY, MARYLAND
11-4-75
DATE
W.O. McLeod
CHIEF BUREAU OF ENGINEERING

CONTRACT NO. 2561-W/S

PLAN AND PROFILE OF WATER AND SEWER MAINS

ELECTION DISTRICT GULFORD NO. 6

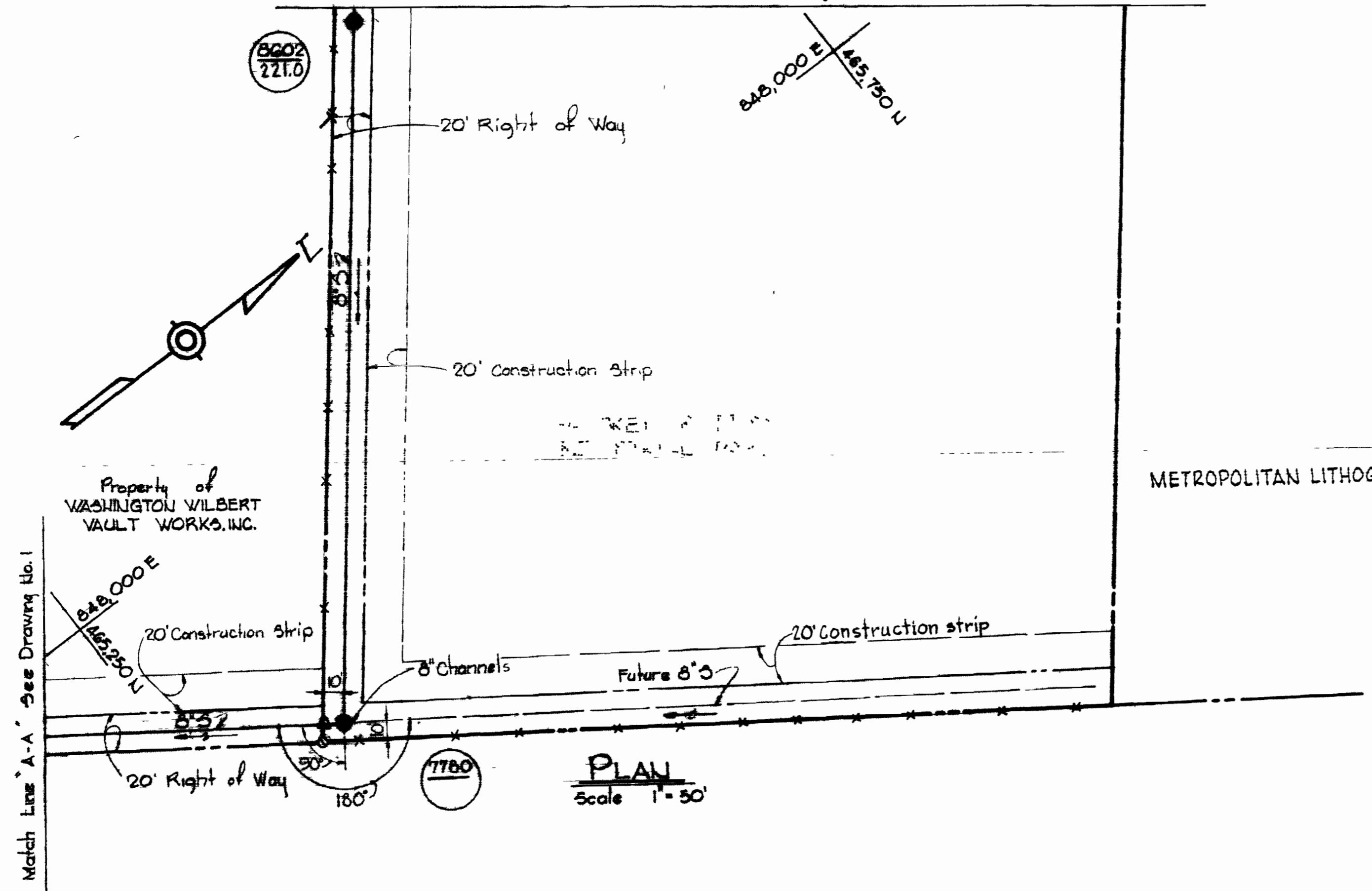
DRAWING NO. 2 OF 3
SCALE AS SHOWN

WS 561-W/S/2

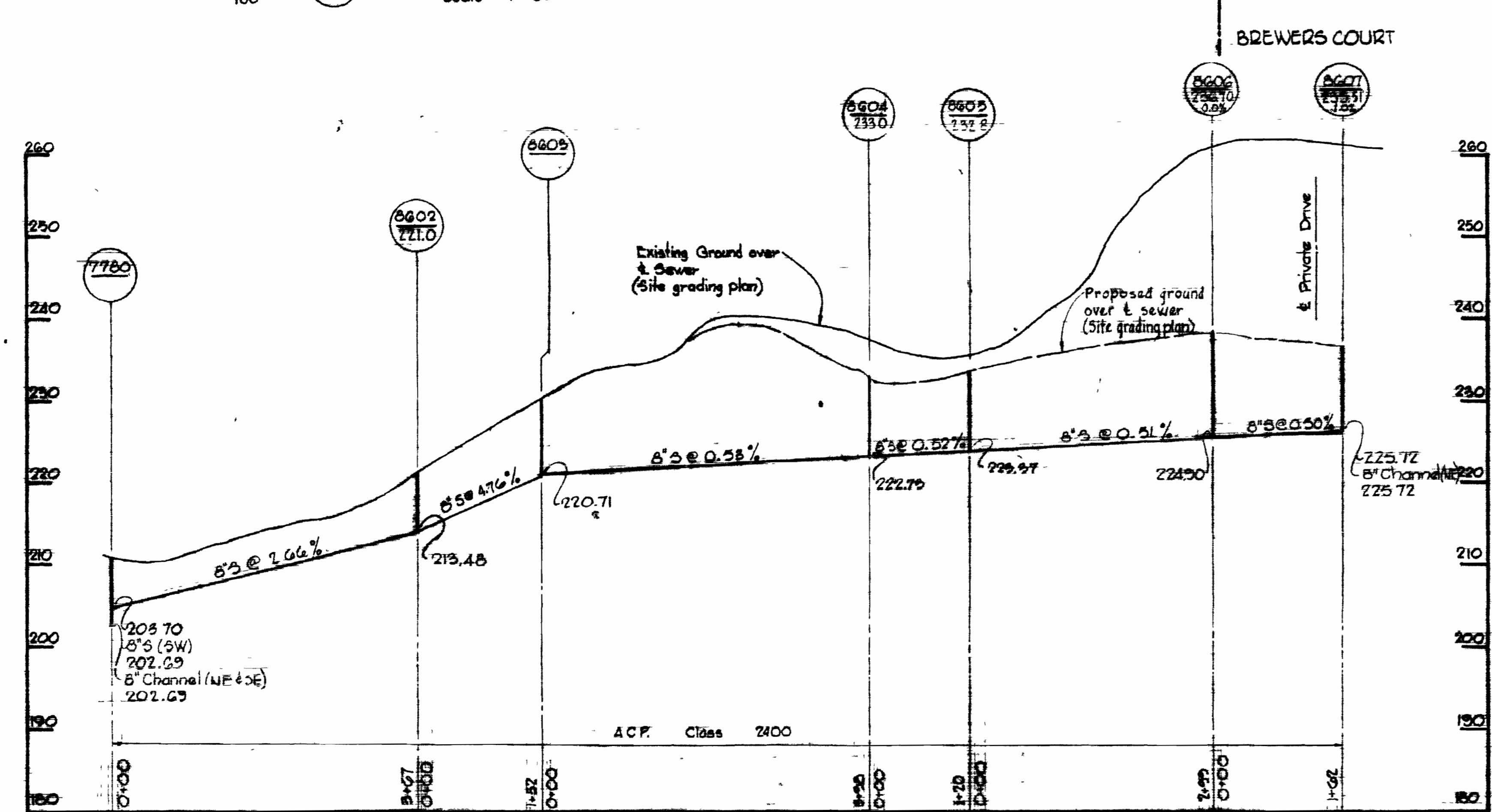
WS 561-W&S/3

PRINTING 44-810 10332

Match Line 'B-B' See Drawing No. 2



PLAN
Scale 1" = 50'



PROFILE

Scale: H: 1" = 100'
V: 1" = 10'



Kenneth J. Milrod
Whiskey Bottom Industrial Park
Contract No. 2561 W&S

<p>WHITMAN, REQUARDT & ASSOCIATES ENGINEERS 1304 ST. PAUL ST. BALTIMORE, MARYLAND</p>	<p>DEPARTMENT OF PUBLIC WORKS HOWARD COUNTY, MARYLAND 11-4-75 DATE</p>	<p>CONTRACT NO. 2561 W&S</p>	<p>PLAN AND PROFILE OF WATER AND SEWER MAINS</p>	<p>ELECTION DISTRICT GULFORD NO. 6</p>	<p>DRAWING NO. 3 OF 3 SCALE AS SHOWN SHEET 17-3</p>
---	--	----------------------------------	--	--	---

W. O. 6024-2

November 25, 1977 7:45 BUILT