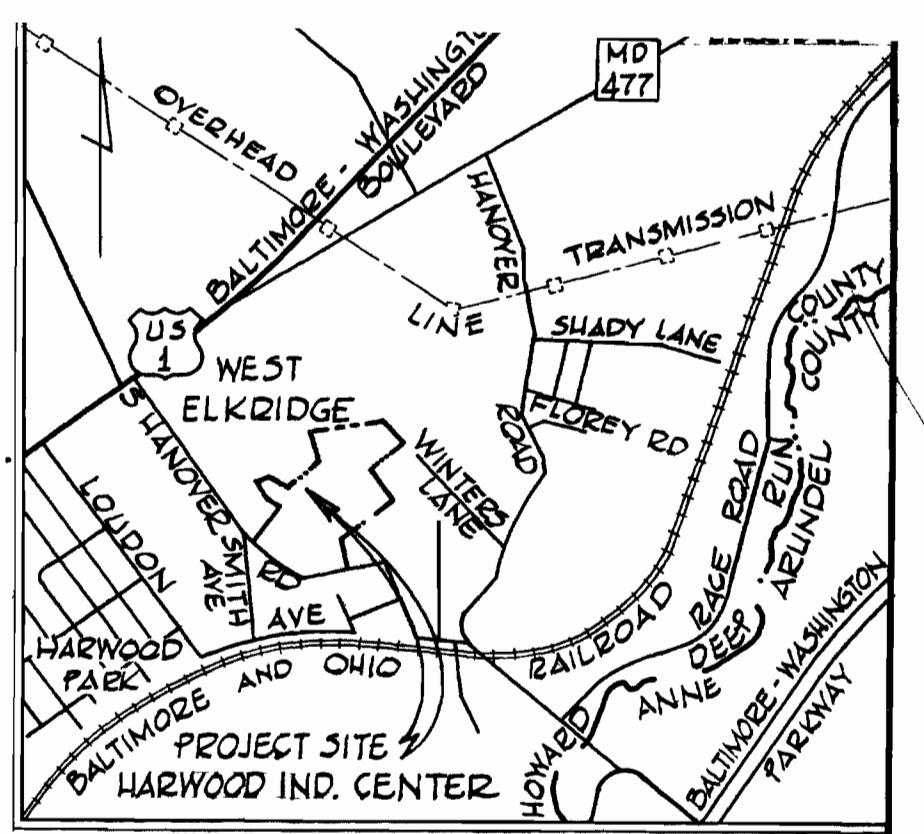


**GENERAL NOTES**

- 1) Approximate locations of existing utilities are shown. The contractor shall take all necessary precautions to protect the existing utilities and to maintain uninterrupted service. Any damage incurred due to contractor's operations shall be repaired immediately at the contractor's expense.
- 2) All pipe elevations shown are invert elevations.
- 3) The contractor shall locate existing utilities a minimum of two weeks in advance of construction operations in the vicinity of utilities.
- 4) For all standard details see standards bound in specifications.
- 5) Block all water main fittings with concrete, see standards bound in specifications.
- 6) Clear all utilities by a minimum of 6", clear all utility poles by 2'-0" minimum or tunnel as required.
- 7) The contractor shall provide a joint in all sewer mains within 2'-0" of exterior manhole walls.
- 8) All manholes to be 4'-0" inside diameter.
- 9) Bury Line Elevations on fire hydrants shall be set to the elevations shown on the plan.
- 10) Cost of strapping fire hydrants and valves to be included in the unit price bid for furnishing and installing fire hydrants.
- 11) All fire hydrants shall be strapped to the tee and shall be buttressed with concrete in accordance with standard details.
- 12) Elevations are based on United States Coast and Geodetic Survey datum. Horizontal control is based on the Maryland State Plane Coordinate System.



**VICINITY MAP**  
Scale: 1" = 200'

**BENCH MARKS**

- PfJ BM "H5-103" Elev 105.85  
Cross cut in southwest corner stone head wall, south side Hanover Road, 64' ± SE of P.I. "H5-3".
- PfJ BM "H5-103A" Elev 133.57  
Road side bonnet bolt of fire hydrant, southeast side of South Hanover Road.
- PfJ BM "R-8" Elev 114.51  
Iron pipe painted yellow 3' SE 30' Oak, 86' ± SW of P.I. "H5-4H".

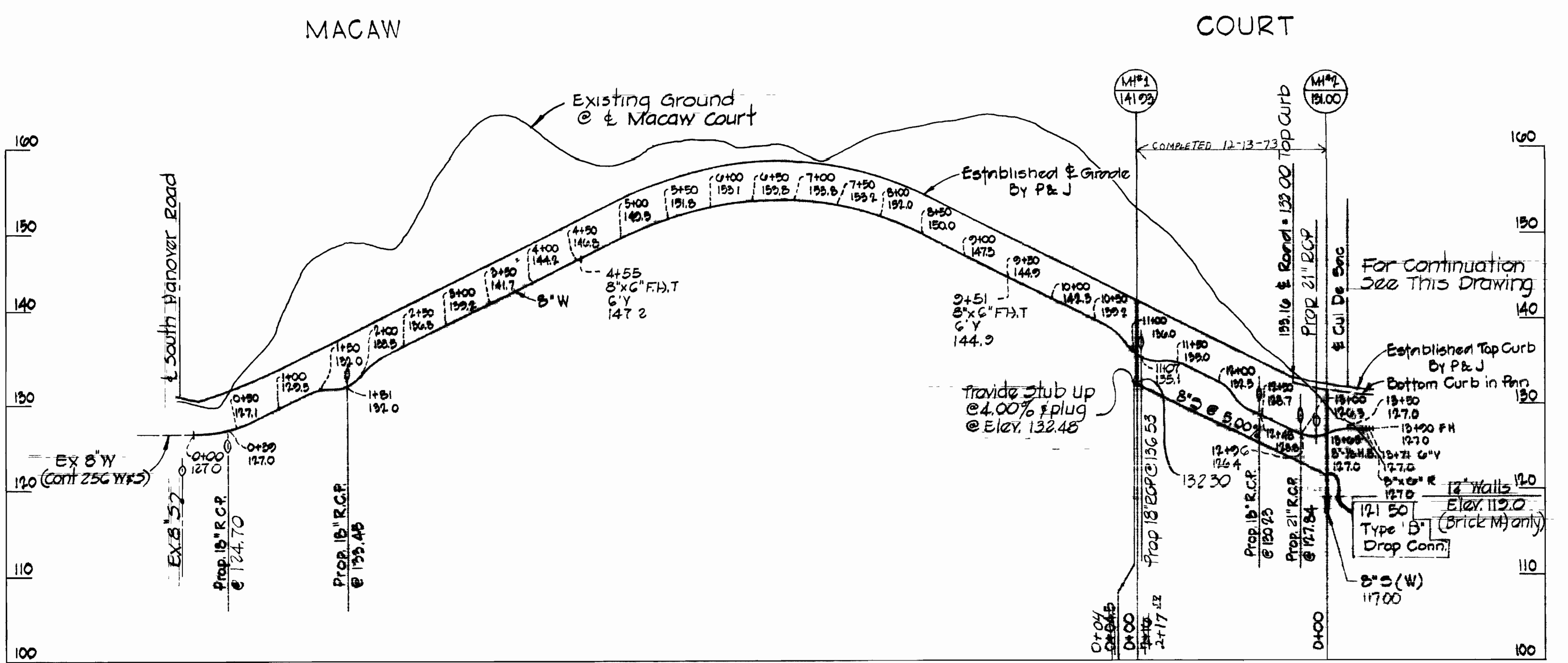
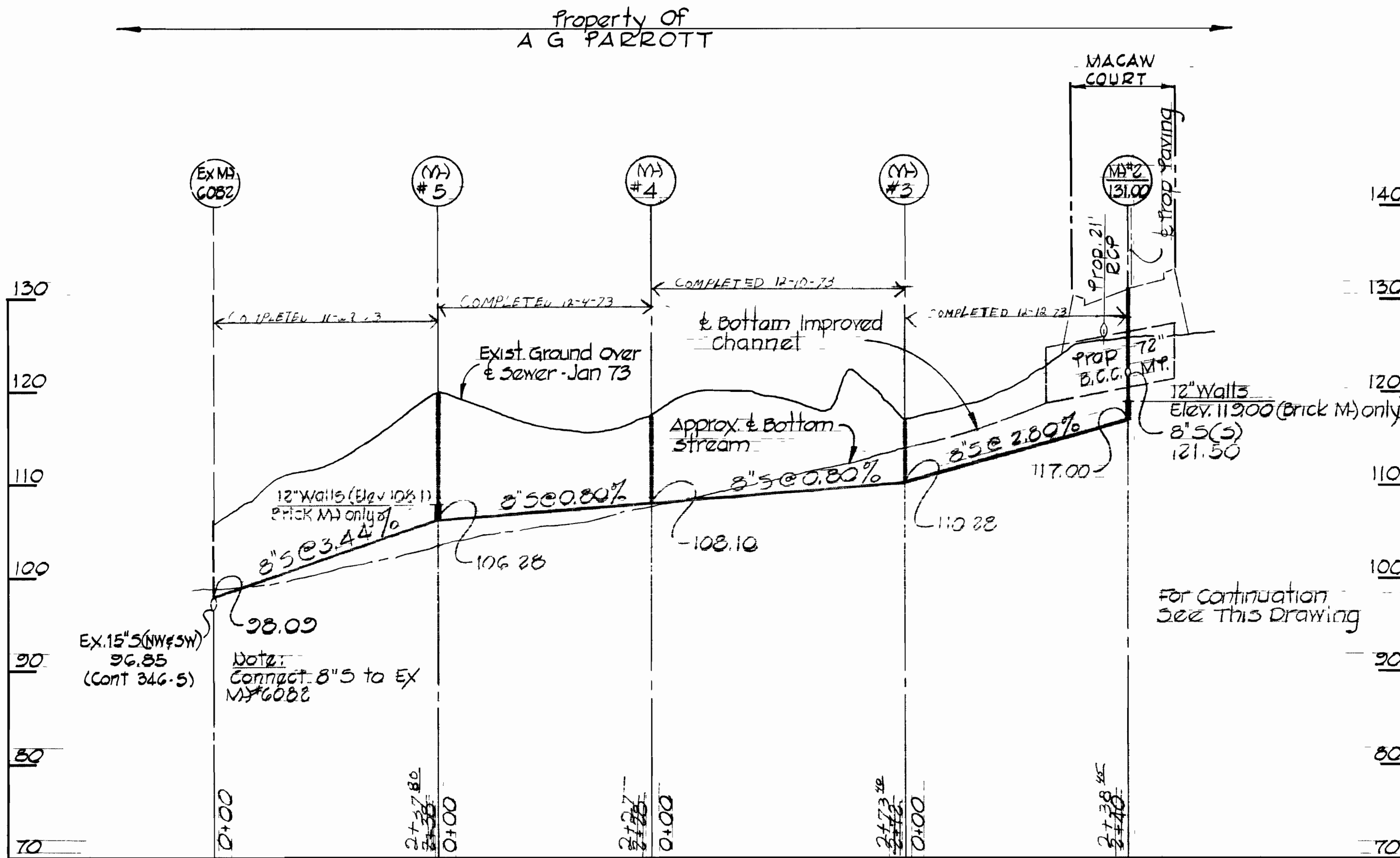
QUANTITIES	
8" SEWER	1200 LF
6" WATER	40 LF
8" WATER	1,370 LF
FIRE HYDRANTS	3

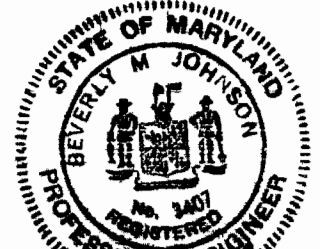
**NOTE:**  
The Contractor shall test pit to locate existing 8" Plug before starting any construction activities on this contract.

Remove existing 8" Plug and cutters and connect Proposed 8" water to existing 8" water.



<b>PURDUM &amp; JESCHKE</b> ENGINEERS 1023 N. CALVERT ST. BALTIMORE, MARYLAND	<b>DEPARTMENT OF PUBLIC WORKS</b> HOWARD COUNTY, MARYLAND 7-18-73 DATE	CONTRACT NO. 54-4-83 OF WATER AND SEWER MAINS	<b>DRAWING SCALE</b> NO. 1 OF 2 1" = 50' SECTION 2
--	---	--	--



  
 Beverly M. Johnson  
 PROFESSIONAL ENGINEER

Contract No. 554-D-W&S  
 HANNOOD INDUSTRIAL CENTER  
 RESURFACING OF DRIVEWAYS AND C  
 SECTION TWO  
 Water and Sewer Extensions

PURDUM & JESCHKE ENGINEERS 1023 N CALVERT ST BALTIMORE, MARYLAND	DEPARTMENT OF PUBLIC WORKS HOWARD COUNTY, MARYLAND DATE 7-18-73 W.O. Parrott CHIEF BUREAU OF ENGINEERING	CONTRACT NO. 554-D-W&S	PROFILE OF WATER AND SEWER MAINS	HANNOOD INDUSTRIAL CENTER A.G. PARROTT INDUSTRIAL PARK SECTION 2	DRAWING NO. 2 OF 2	SCALE HORIZ. 1" = 100' VERT. 1" = 10' DESIGNED A.J.B. DRAFTED A.J.B. CHECKED T.A.F.
---	--	------------------------	-------------------------------------	--	--------------------------	--

suspend

suspend

WS 554 W&S/2