

PROJECT NO. WP 8037
WATER MAIN EXTENSIONS
HOWARD COUNTY, MARYLAND
DEPARTMENT OF PUBLIC WORKS

QUANTITIES	
Item	Quantity
6" Water	75 LF
12" Water	10,800 LF
Fire Hydrants	15

'AS-BUILT'
 Stakeout and Diary
 in F.B. 5558
 All 12" Water - D.I.R.



Kenneth A. McCord

WHITMAN, REQUARDT & ASSOCIATES ENGINEERS 1304 ST. PAUL ST. BALTIMORE, MARYLAND	DEPARTMENT OF PUBLIC WORKS HOWARD COUNTY, MARYLAND DATE 11-30-73 <i>W.O. Gilbert</i> CHIEF - BUREAU OF WATER AND SEWER	CONTRACT NO. 549-W	LOCATION MAP	ELECTION DISTRICT GUILFORD NO. 6	DRAWING NO. 1 OF 8 SCALE 1"=600'
---	--	--------------------	--------------	-------------------------------------	-------------------------------------

Project No. W.P.-8037
 Contract No. 549-W

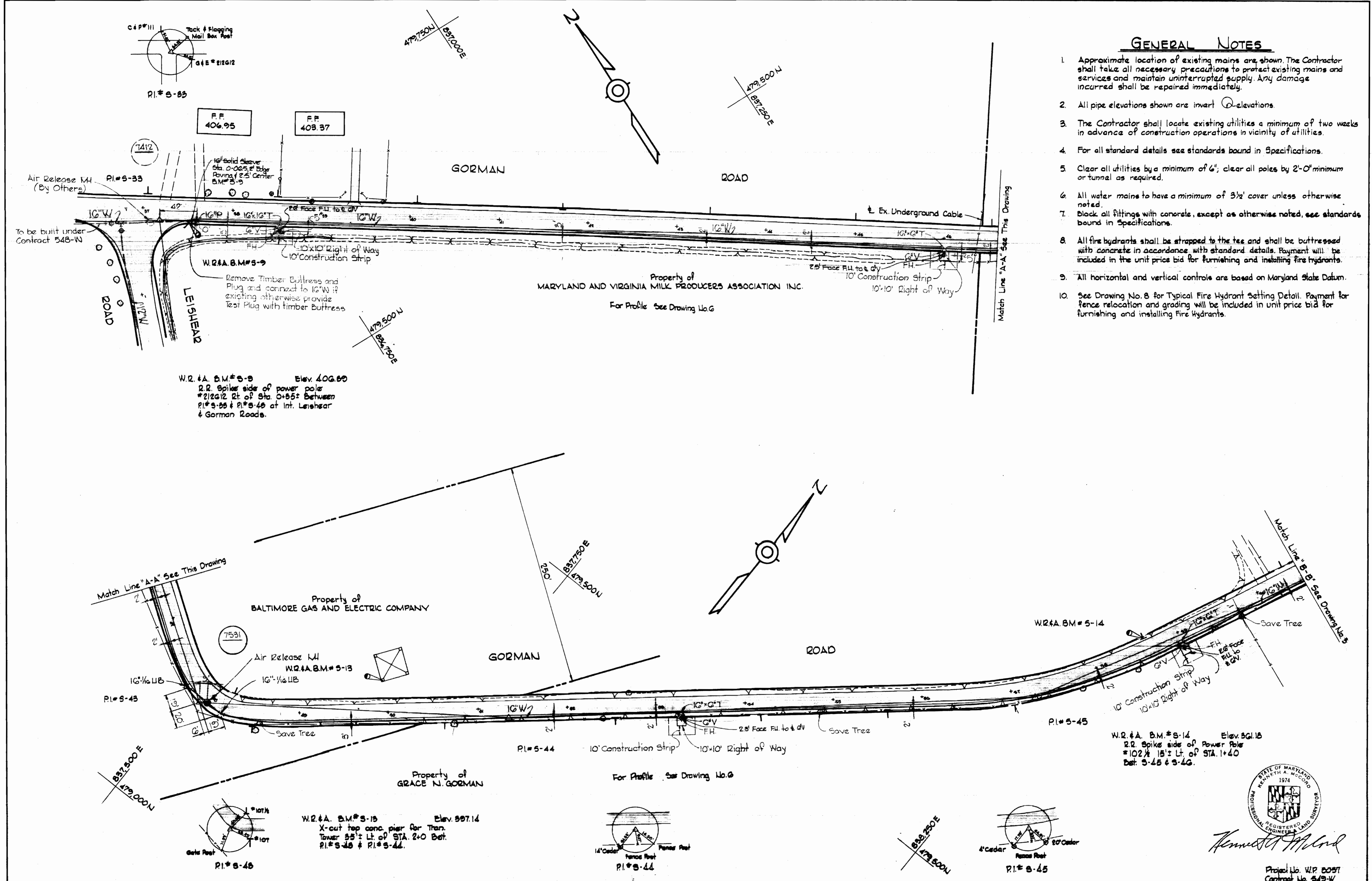
Nov 13, 1974 AS BUILT

W.O. 66012

WS 549-w/1

GENERAL NOTES

1. Approximate location of existing mains are shown. The Contractor shall take all necessary precautions to protect existing mains and services and maintain uninterrupted supply. Any damage incurred shall be repaired immediately.
2. All pipe elevations shown are invert (I) elevations.
3. The Contractor shall locate existing utilities a minimum of two weeks in advance of construction operations in vicinity of utilities.
4. For all standard details see standards bound in Specifications.
5. Clear all utilities by a minimum of 6', clear all poles by 2'-0" minimum or tunnel as required.
6. All water mains to have a minimum of 3 1/2' cover unless otherwise noted.
7. Block all fittings with concrete, except as otherwise noted, see standards bound in Specifications.
8. All fire hydrants shall be strapped to the tee and shall be buttressed with concrete in accordance with standard details. Payment will be included in the unit price bid for furnishing and installing fire hydrants.
9. All horizontal and vertical controls are based on Maryland State Datum.
10. See Drawing No. 8 for Typical Fire Hydrant Setting Detail. Payment for fence relocation and grading will be included in unit price bid for furnishing and installing Fire Hydrants.



WHITMAN, REQUARDT & ASSOCIATES
ENGINEERS
1304 ST. PAUL ST.
BALTIMORE, MARYLAND

DEPARTMENT OF PUBLIC WORKS
HOWARD COUNTY, MARYLAND
11-30-73
W. O. Gilbert
CHIEF BUREAU OF ENGINEERING

CONTRACT NO. 549-W

PLAN OF
WATER MAINS

ELECTION DISTRICT
GUILFORD NO. 6

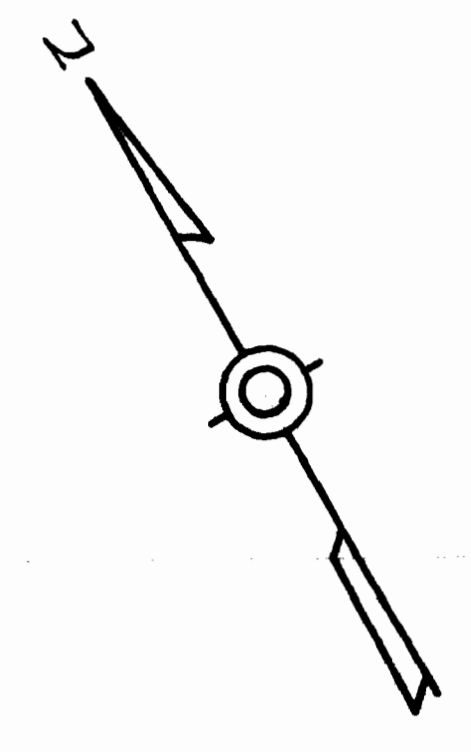
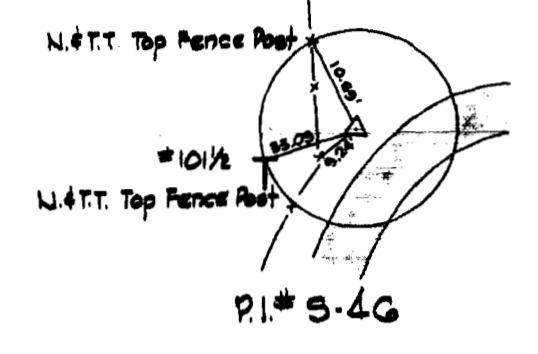
DRAWING NO. 2 OF 8	SCALE 1" = 50'	479-(8) 479-(7)
--------------------	----------------	--------------------

W. O. GG01-2

NOV. 12, 1974 AS BUREAU OF ENGINEERING

WS 549-W/2

W.R. & A. B.M. #5-15 Elev. 544.95
 R.R. Spike side of Power Pole #101 1/2 50'± Lt. of P.I. #5-46.

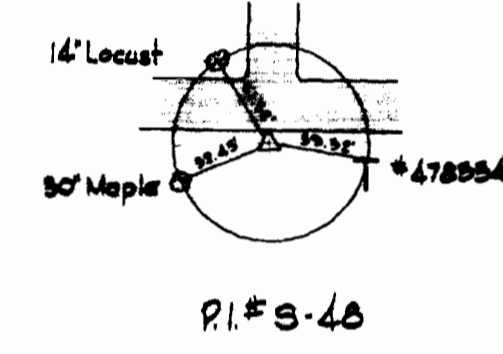
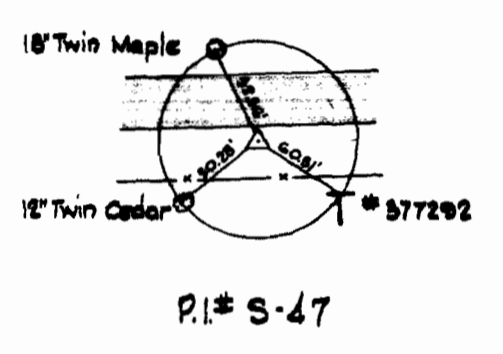
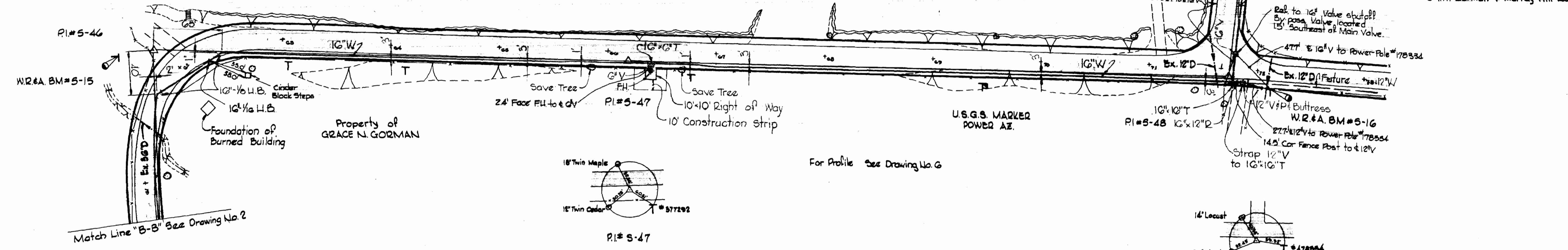


GORMAN ROAD

MURRAY HILL ROAD

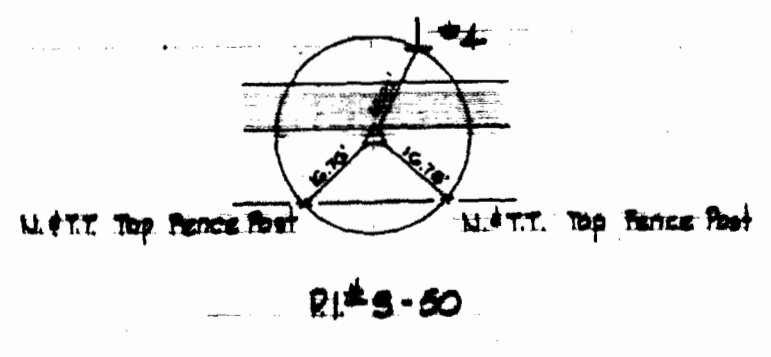
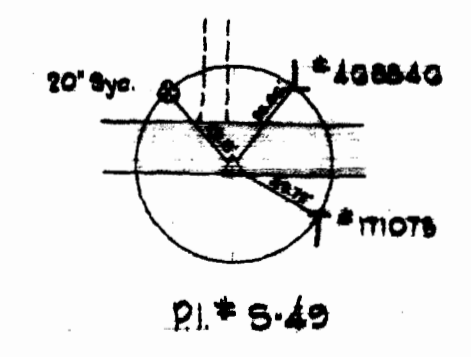
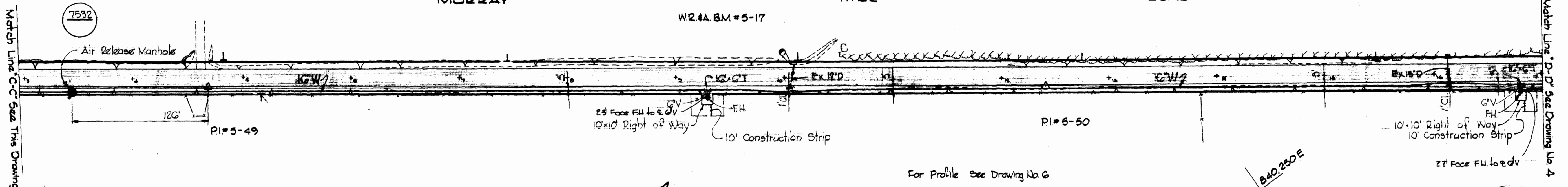
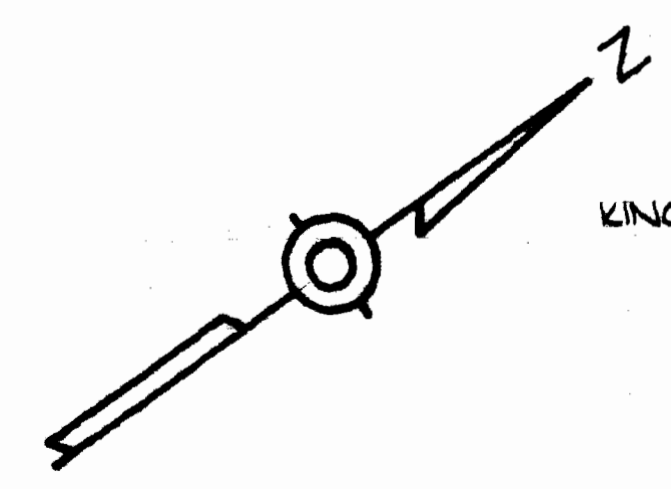
Property of KINGDON GOULD JR. AND MARY T. GOULD

W.R. & A. B.M. #5-16 Elev. 586.57
 R.R. Spike side Power Pole #178554 50'± Rt. of P.I. #5-48 @ Int. Gorman & Murray Hill Road



MURRAY HILL ROAD

Property of KINGDON GOULD JR. AND MARY T. GOULD



W.R. & A. B.M. #5-17 Elev. 568.07
 □ Cut corner concrete headwall 20'± left of sta. 5+87 between P.I. #5-45 and P.I. #5-50



Kenneth A. Wood

Project No. W.P. 6057
 Contract No. 549-W

WHITMAN, REQUARDT & ASSOCIATES
 ENGINEERS
 1304 ST. PAUL ST.
 BALTIMORE, MARYLAND

DEPARTMENT OF PUBLIC WORKS
 HOWARD COUNTY, MARYLAND
 DATE 11-30-73
W. O. Gilbert
 CHIEF, BUREAU OF ENGINEERING

CONTRACT NO. 549-W

PLAN OF WATER MAINS

ELECTION DISTRICT GUILFORD NO. 6

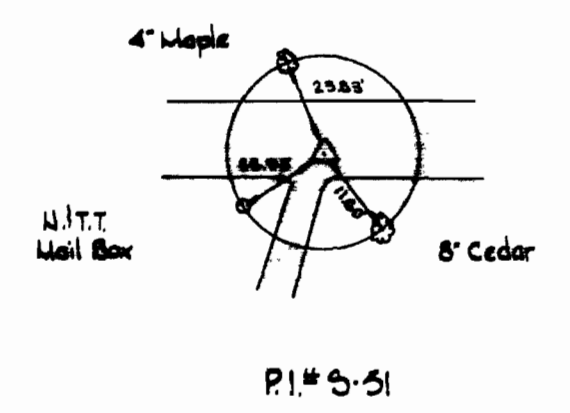
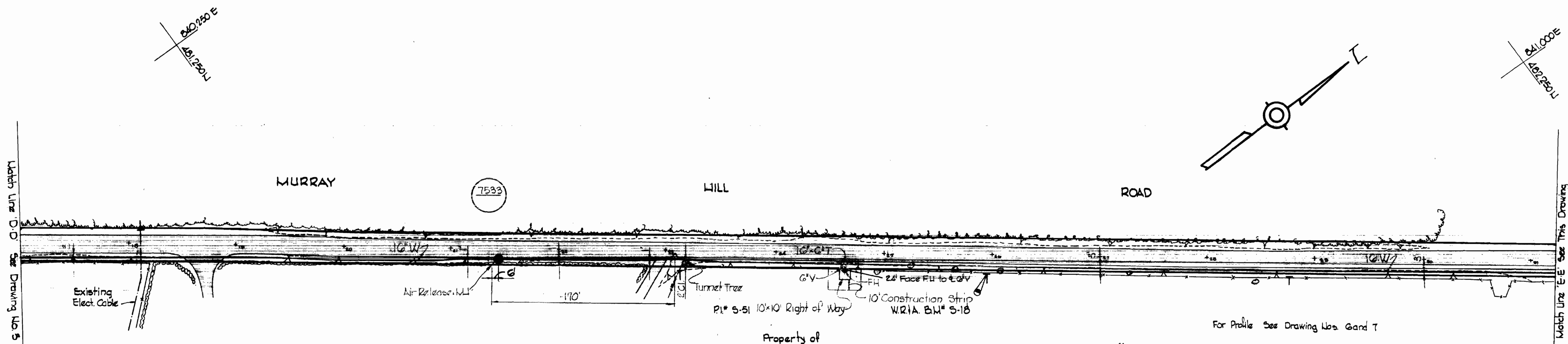
DRAWING NO. 3 OF 8	SCALE 1" = 50'	480-(6)
		475-(6)
		470-(7)
		465-(7)

NOV. 13, 1972 AS BUILT E8 517

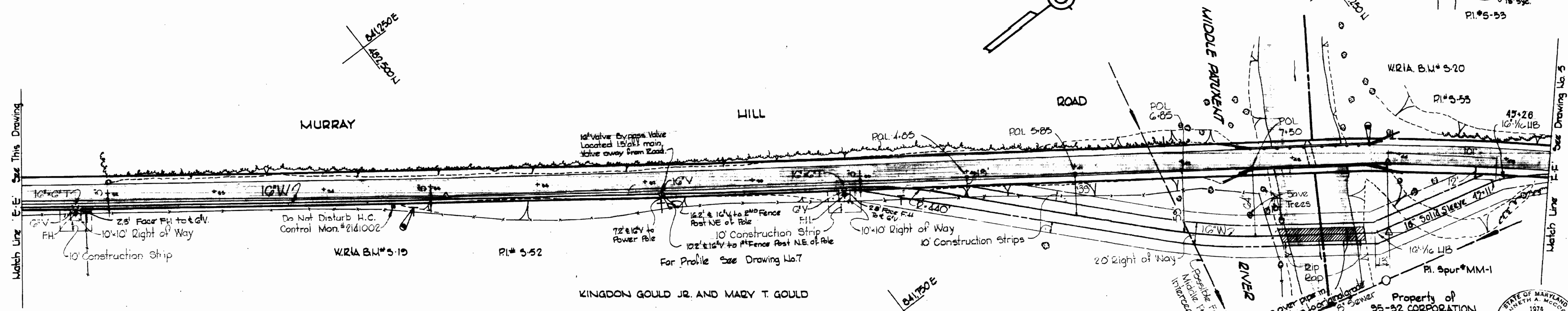
W. O. 6601-2

WS 549-W/3

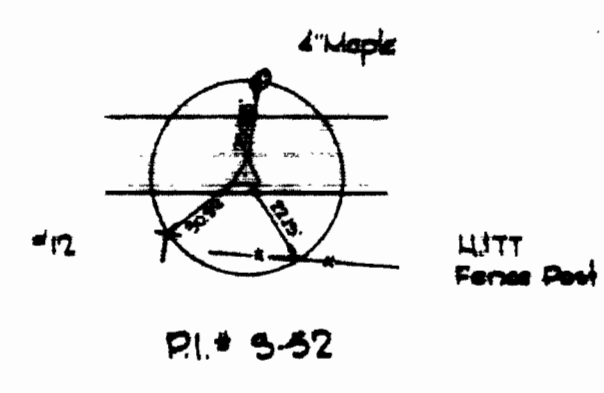
SUFF



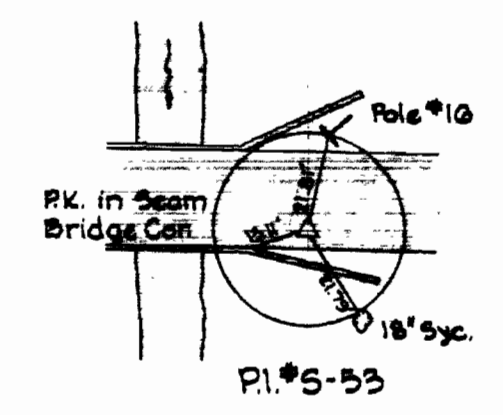
W.R.I.A. B.M. # 5-18 Elev. 540.64
 R.R. Spike side Power Pole
 5' 0" E.L. of Sta. 11-79, Del. P.I.'s
 5-51 and 5-52



W.R.I.A. B.M. # 5-19 Elev. 299.45
 R.R. Spike side Power Pole C.P. # 12,
 5' E.L. of Sta. 11-79, Del. P.I.'s
 5-51 and 5-52.



W.R.I.A. B.M. # 5-20 Elev. 257.88
 5' cut cor. Bridges, 17' left of
 Sta. 0-65, Del. P.I.'s 5-52
 and 5-53.



Kenneth A. Accord

Project No. W.P. 0097
 Contract No. 549-W

WHITMAN, REQUARDT & ASSOCIATES ENGINEERS 1304 ST. PAUL ST. BALTIMORE, MARYLAND	DEPARTMENT OF PUBLIC WORKS HOWARD COUNTY, MARYLAND DATE 11-30-73 W.O. Fulbert CHIEF BUREAU OF ENGINEERING	CONTRACT NO. 549-W	PLAN OF WATER MAINS	ELECTION DISTRICT GULFORD NO. 6	DRAWING NO. 4 OF 8	SCALE 1" = 50' 481-75 481-76
					481-75	481-76
					481-75	481-76

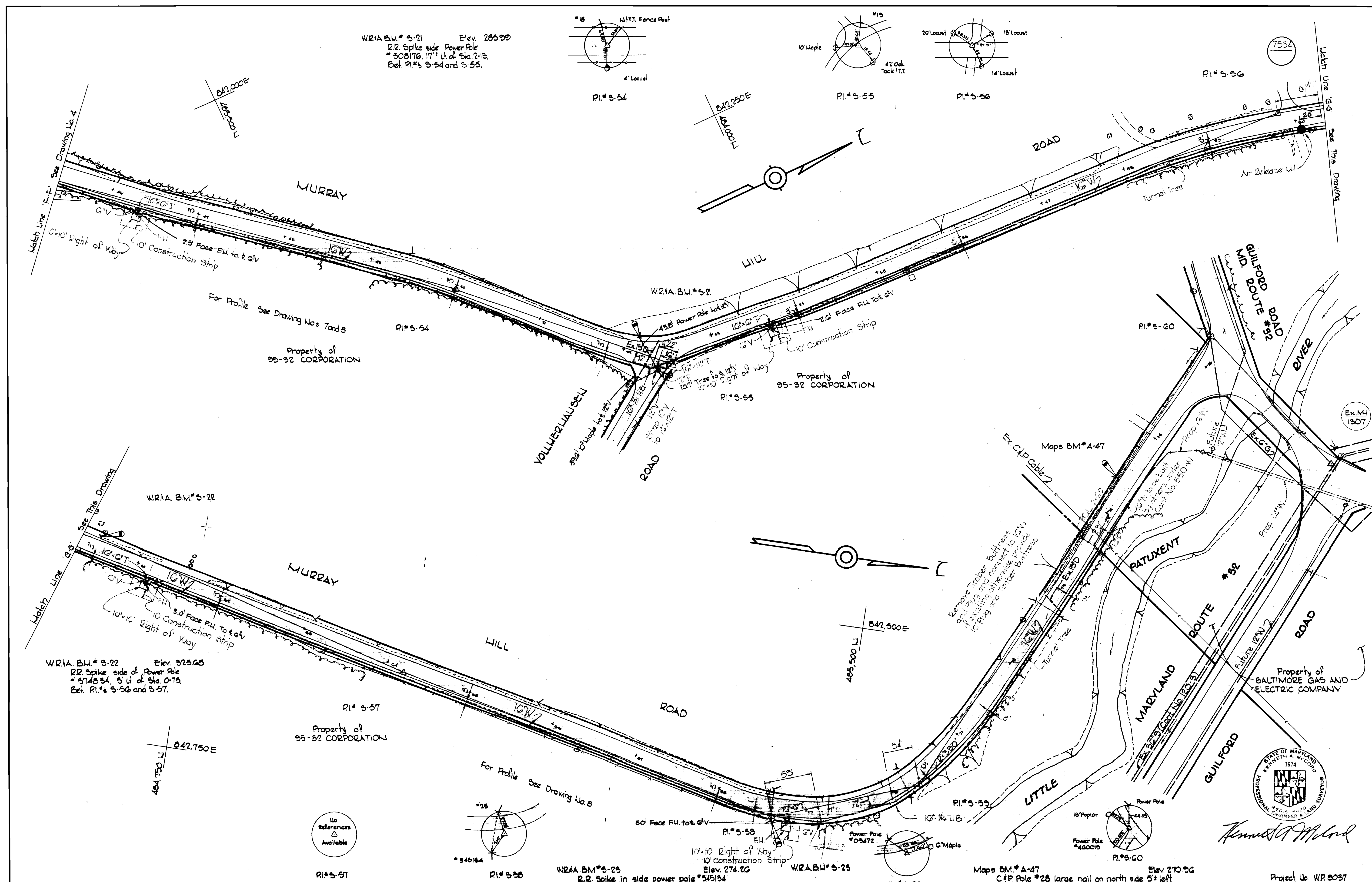
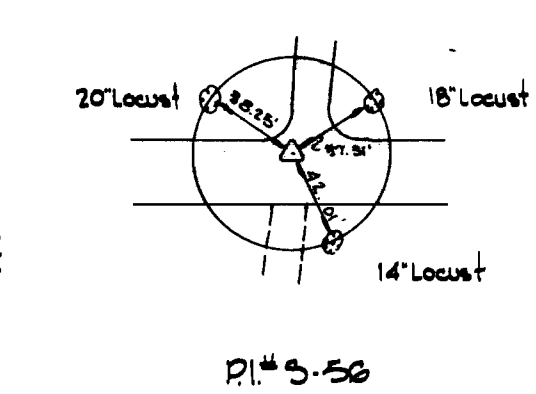
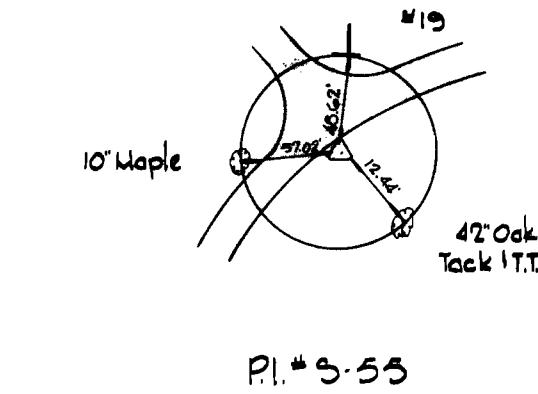
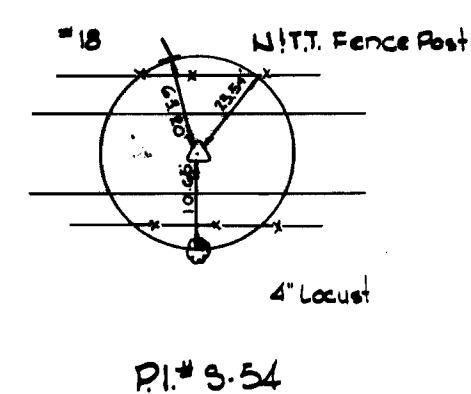
W.O. 6601-2

NOV 13 1974 AS BUILT FB 517, 5230

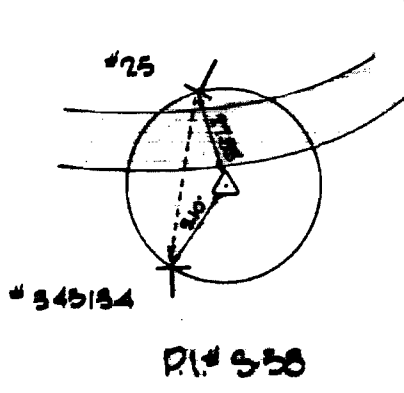
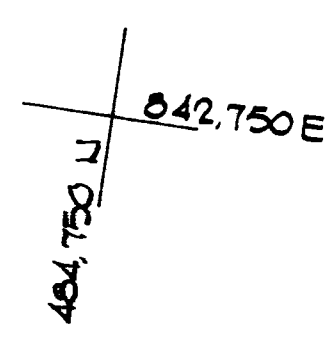
WS 549-W/4

SUFF

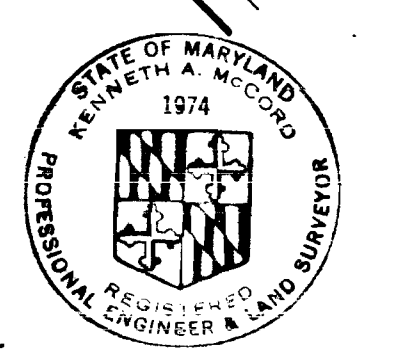
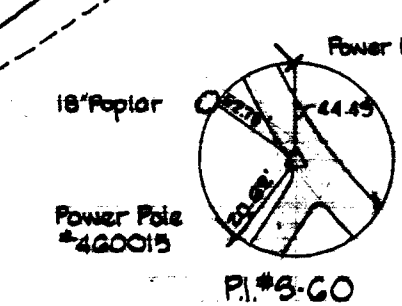
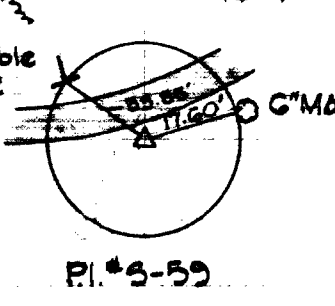
W.R.A. B.M. # 5-21 Elev. 285.99
 R.R. Spike side Power Pole
 # 308176, 17' Lt. of Sta. 215.
 Bet. P.I.'s 5-54 and 5-55.



W.R.A. B.M. # 5-22 Elev. 325.68
 R.R. Spike side of Power Pole
 # 374854, 5' Lt. of Sta. 0+75.
 Bet. P.I.'s 5-56 and 5-57.



W.R.A. B.M. # 5-23 Elev. 274.26
 R.R. Spike in side power pole # 545154
 5' Lt. right of P.I. # 5-58

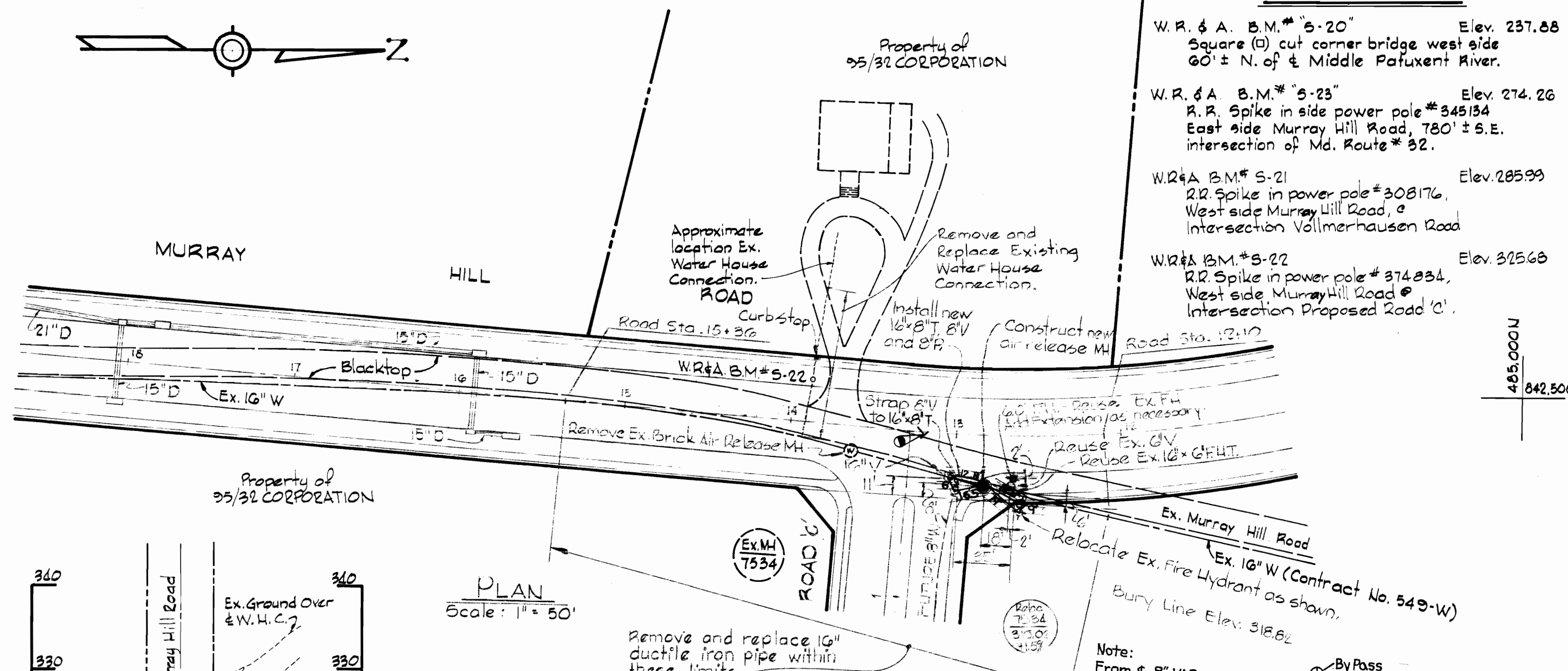
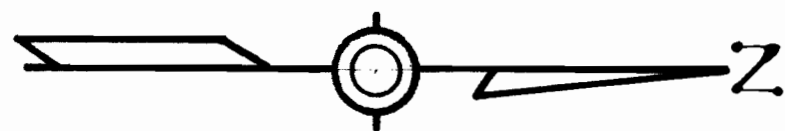


Kenneth A. McCord

WHITMAN, REQUARDT & ASSOCIATES ENGINEERS 1304 ST. PAUL ST. BALTIMORE, MARYLAND	DEPARTMENT OF PUBLIC WORKS HOWARD COUNTY, MARYLAND DATE 11-30-73 <i>W O Falberd</i> CHIEF BUREAU OF ENGINEERING	CONTRACT NO. 549-W	PLAN OF WATER MAINS	ELECTION DISTRICT GUILFORD NO. 6	DRAWING NO. 5 OF 8 SCALE 1" = 50' 485-(5) 485-(4) 485-(4)
---	---	--------------------	------------------------	-------------------------------------	---

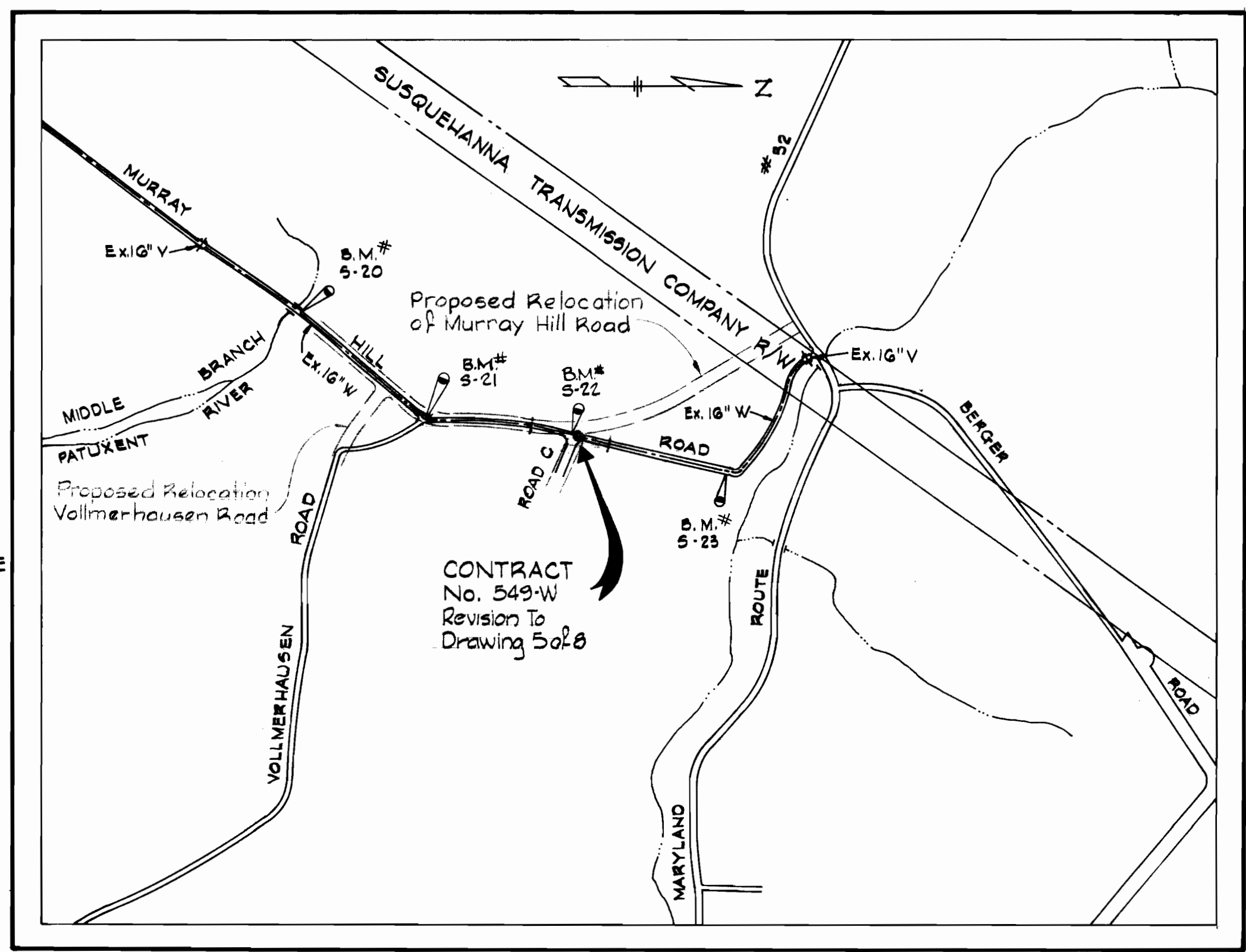
WS 549-w/5

WS 549-W/5A

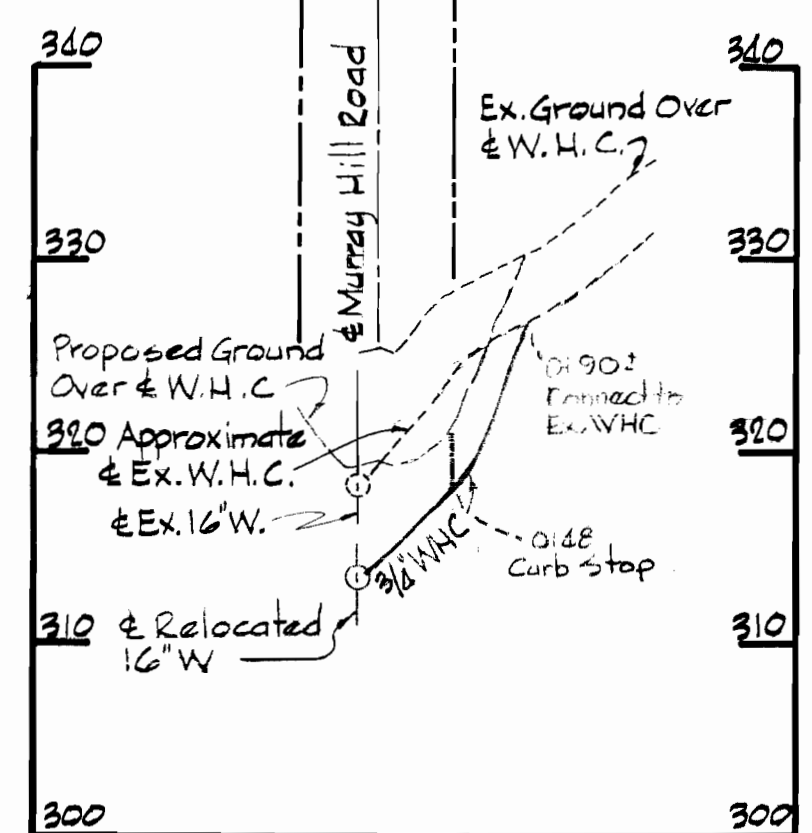


BENCH MARKS

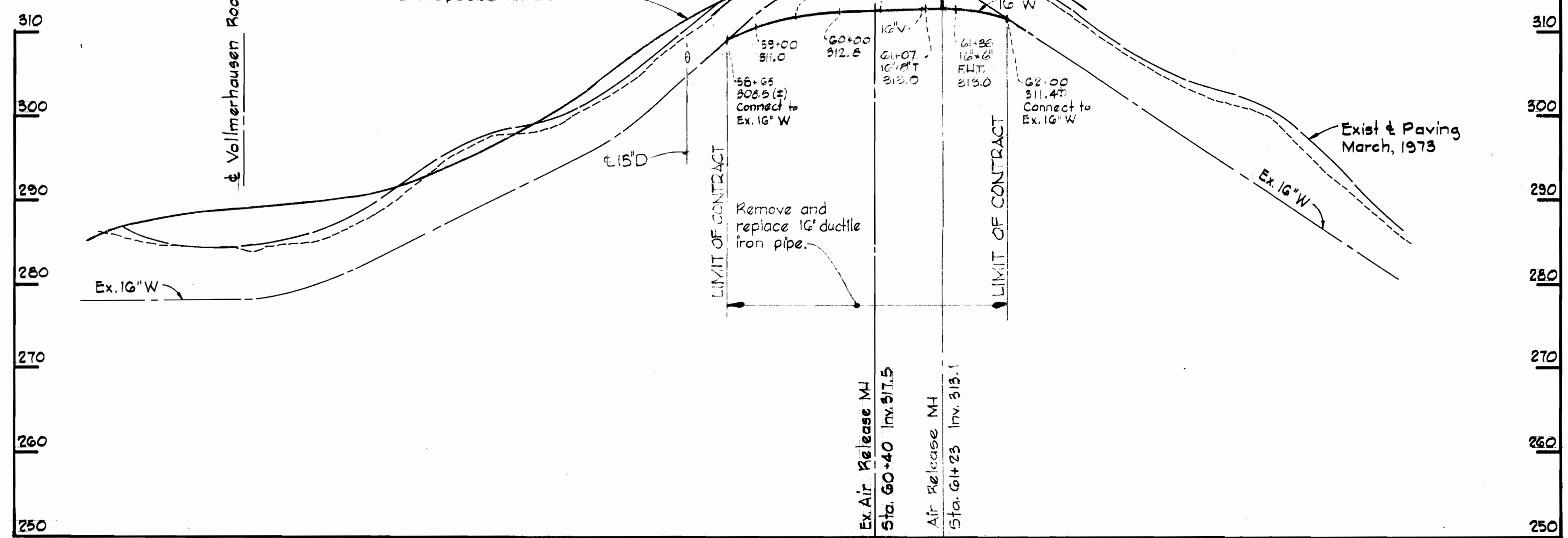
- W. R. & A. B.M. # "5-20" Elev. 237.88
Square (Q) cut corner bridge west side
60' ± N. of & Middle Patuxent River.
- W. R. & A. B.M. # "5-23" Elev. 274.26
R.R. Spike in side power pole #345134
East side Murray Hill Road, 780' ± S.E.
Intersection of Md. Route # 32.
- W.R. & A. B.M. # "5-21" Elev. 285.99
R.R. Spike in power pole #308176.
West side Murray Hill Road, &
Intersection Vollmerhausen Road
- W.R. & A. B.M. # "5-22" Elev. 325.68
R.R. Spike in power pole # 374834,
West side Murray Hill Road &
Intersection Proposed Road 'C'.



LOCATION MAP
Scale: 1" = 600'



PROFILE
Scale: H: 1" = 10',
V: 1" = 10'



PROFILE
Scale: H: 1" = 100',
V: 1" = 10'

GENERAL NOTES

- Approximate location of existing mains are shown. The contractor shall take all necessary precautions to protect existing mains and services and maintain uninterrupted supply. Any damage incurred shall be repaired immediately.
- All pipe elevations shown are invert elevations.
- The contractor shall locate existing utilities a minimum of two weeks in advance of construction operations in vicinity of utilities.
- The contractor shall notify the following utilities or agencies at least five days before starting work shown on these plans:
Baltimore Gas and Electric Company - Underground Electric Distribution Engineering
Damage Control 234-5691.
- Underground Gas Distribution Engineering 234-5691.
Chesapeake and Potomac Telephone Company 393-3648.
Miss Utility 1-559-0100.
State Highway Administration 531-5535.
- For all standard details see standards bound in specifications.
- All horizontal and vertical controls are base on Maryland State Datum.
- Clear all utilities by a minimum of 6".
- Block all fittings with concrete; see standards bound in specifications.
- All water mains shall have a minimum of 3 1/2' cover.
- All water mains shall be D.I.P.
- All valves shall be strapped to tees where applicable in accordance with the standard details.
- All fire hydrants shall be strapped and buttressed in accordance with the standard details. Soil around the hydrants shall be compacted in accordance with Section 5-15 of the standard specifications.
- Bury Line elevations on fire hydrants shall be set to the elevation shown on the drawings.

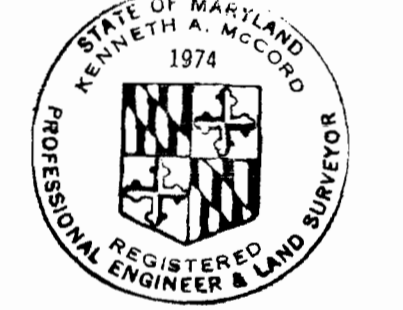
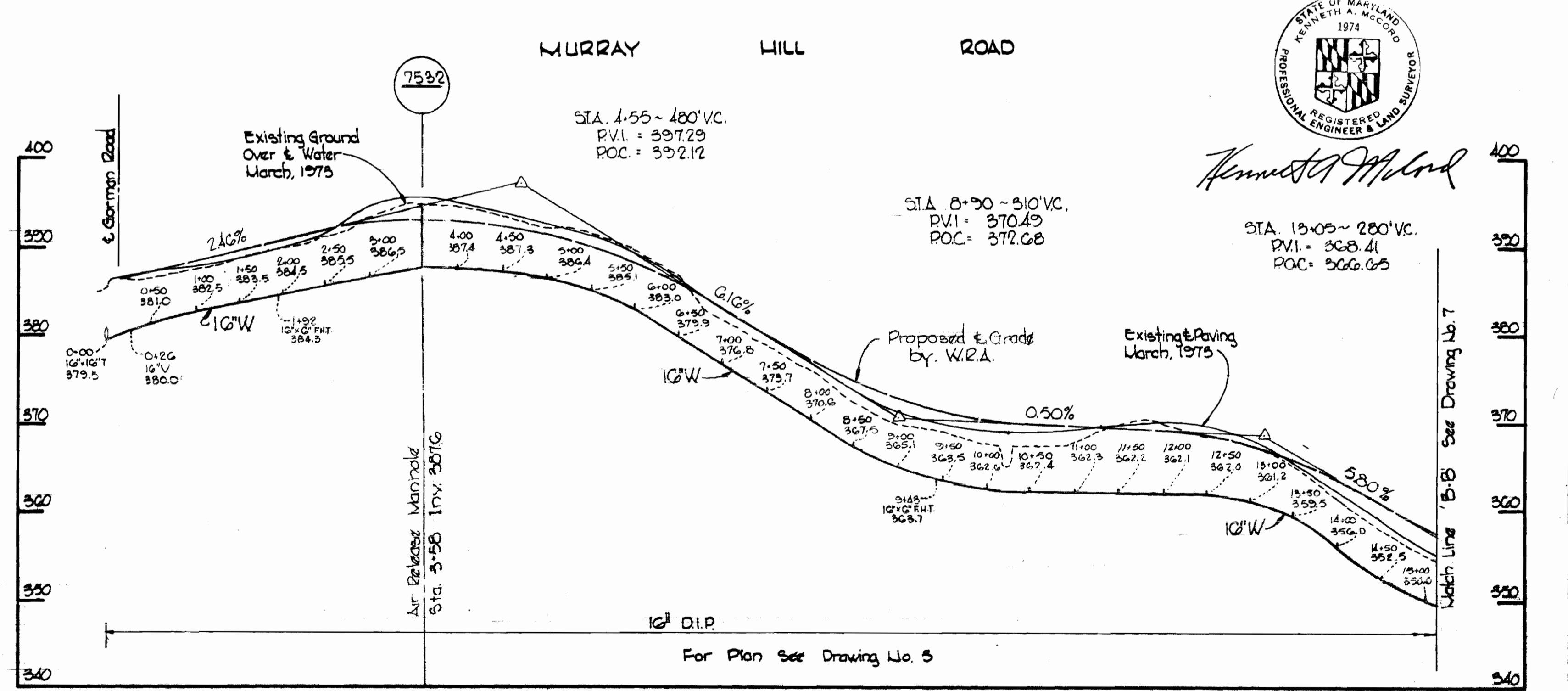
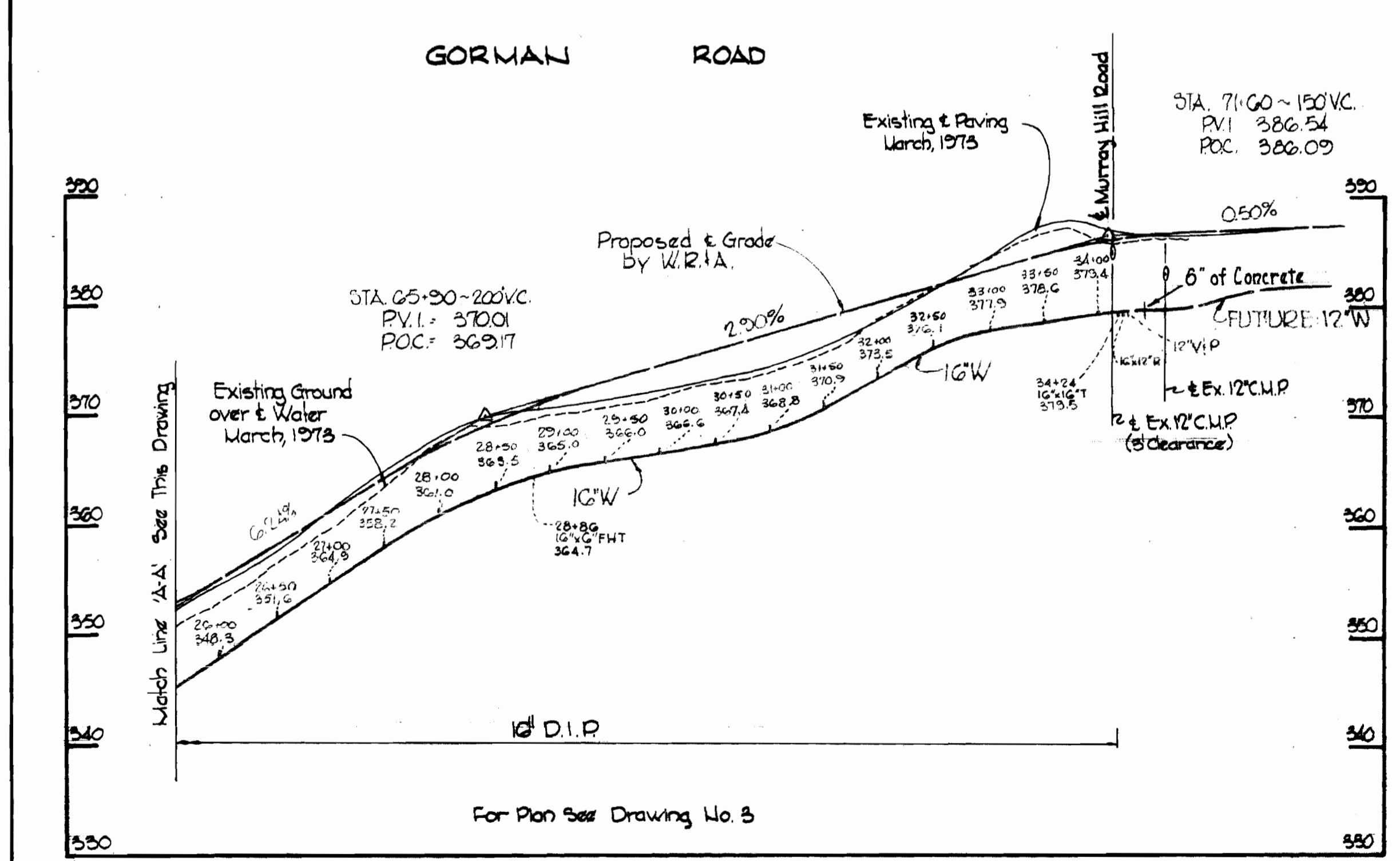
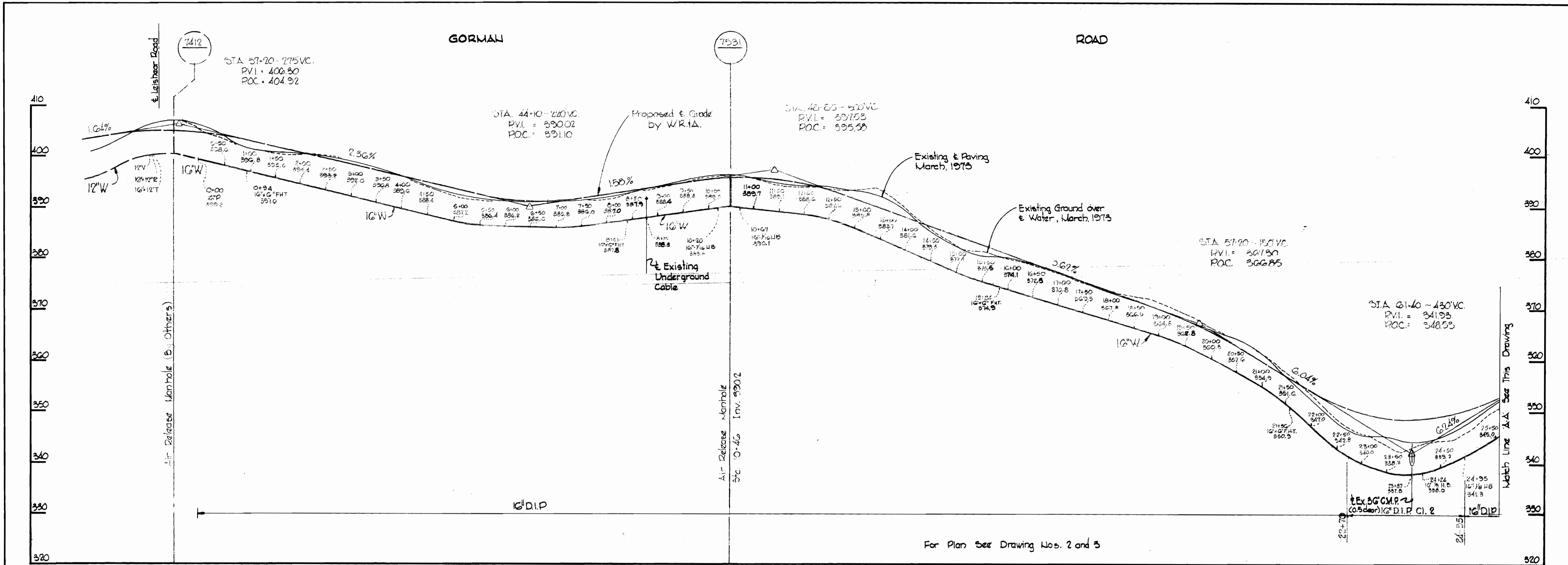
QUANTITIES			
ITEM	BID	AS-BUILT	MATERIAL / SUPPLIER
16" Water		325 L.F.	
6" Water		10 L.F.	



Herbert M. Lord

Village of Kings Contrivance
Section 3, Area 1
Contract No. 549-W
Revision To Drawing 5 of 8

WHITMAN, REQUARDT & ASSOCIATES ENGINEERS 1304 ST. PAUL ST. BALTIMORE, MARYLAND	DEPARTMENT OF PUBLIC WORKS HOWARD COUNTY, MARYLAND <i>Richard E. Brudenberg</i> 9/1/78 DIRECTOR OF PUBLIC WORKS	CONTRACT NO. 549-W REVISION TO DWG. 5 OF 8 <i>W. O. S. 9.5.78</i> CHIEF BUREAU OF ENGINEERING	PLAN OF WATER MAIN	ELECTION DISTRICT GUILFORD NO. 6	DRAWING NO. 1 OF 1	SCALE AS SHOWN
--	---	---	------------------------------	--	---------------------------------	-----------------------------



Kenneth A. McCord

WHITMAN, REQUARDT & ASSOCIATES
 ENGINEERS
 1304 ST. PAUL ST.
 BALTIMORE, MARYLAND

DEPARTMENT OF PUBLIC WORKS
 HOWARD COUNTY, MARYLAND
 DATE 11-30-73
W. O. Fallick
 CHIEF BUREAU OF ENGINEERING

CONTRACT NO. 549-W

PROFILE OF
 WATER MAINS

ELECTION DISTRICT
 GUILFORD NO. 6

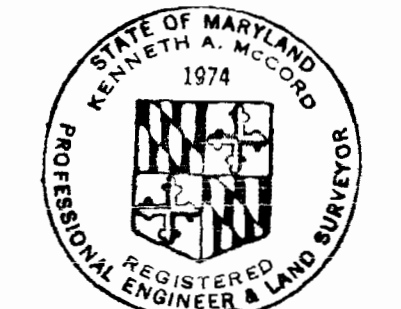
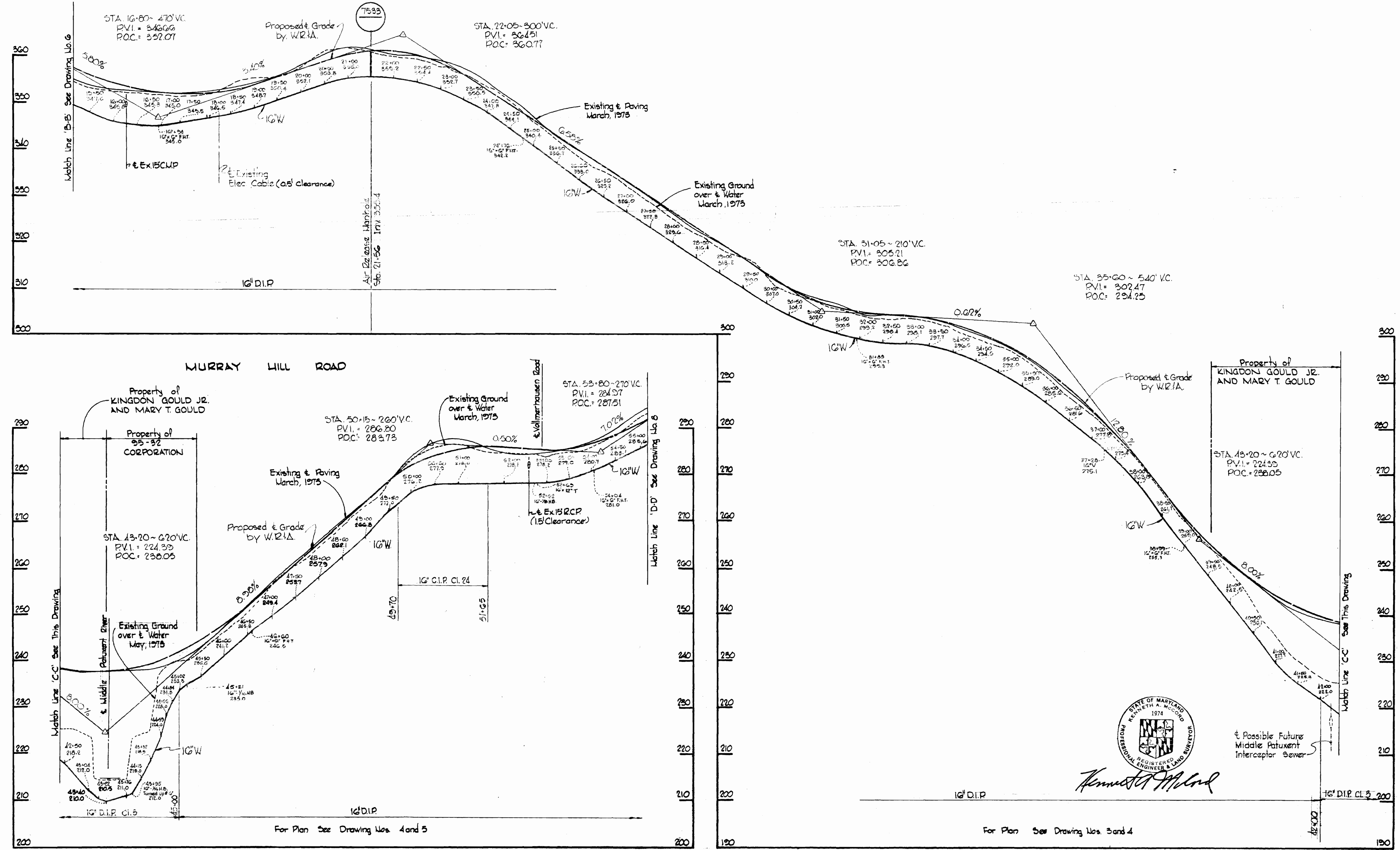
DRAWING NO. 6 OF 8
 SCALE H. 1" = 100'
 V. 1" = 10'

W. O. 6601-2

NOV. 13, 1974

WS 549-W/6

MURRAY HILL ROAD



Kenneth A. McCord

WHITMAN, REQUARDT & ASSOCIATES
ENGINEERS
1304 ST. PAUL ST.
BALTIMORE, MARYLAND

DEPARTMENT OF PUBLIC WORKS
HOWARD COUNTY, MARYLAND
ed O. Filbert
DATE 11-30-73
CHIEF-BUREAU OF ENGINEERING

CONTRACT NO. 549-W

PROFILE OF
WATER MAINS

ELECTION DISTRICT
GUILFORD NO. 6

Project No. W.P. 20017
Contract No. 549-W
DRAWING NO. 7
OF 8
SCALE
H: 1" = 100'
V: 1" = 10'

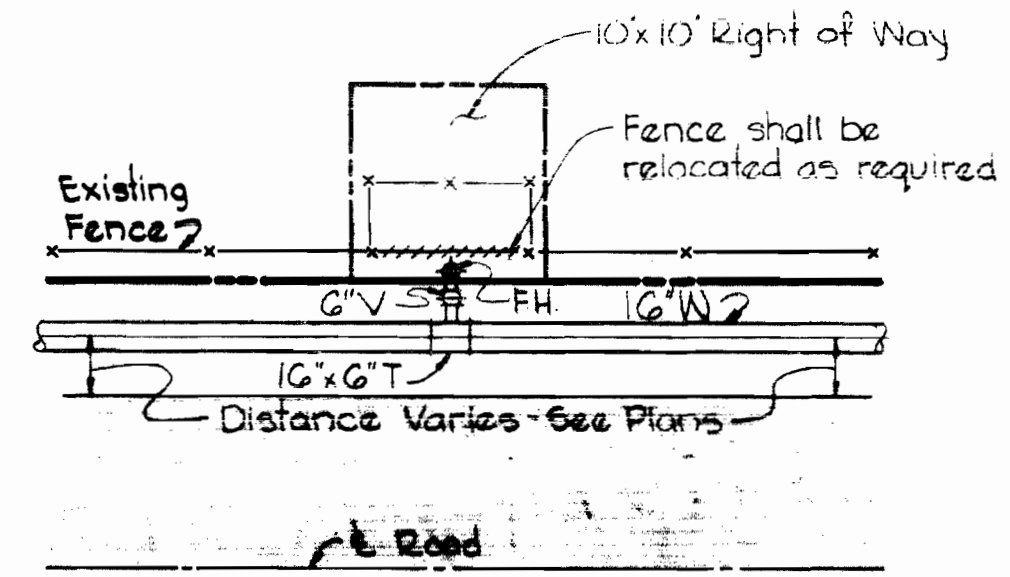
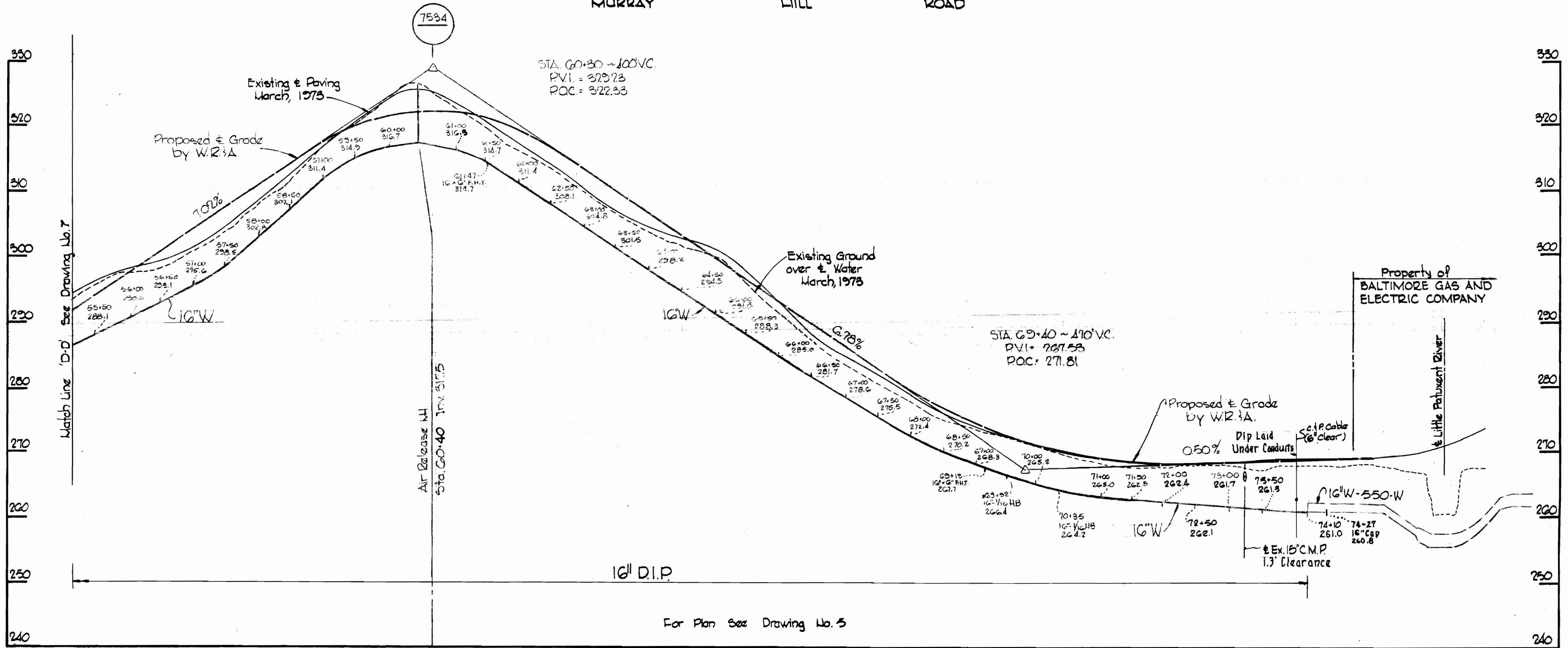
W. O. 6601-2

NOV 13, 1974

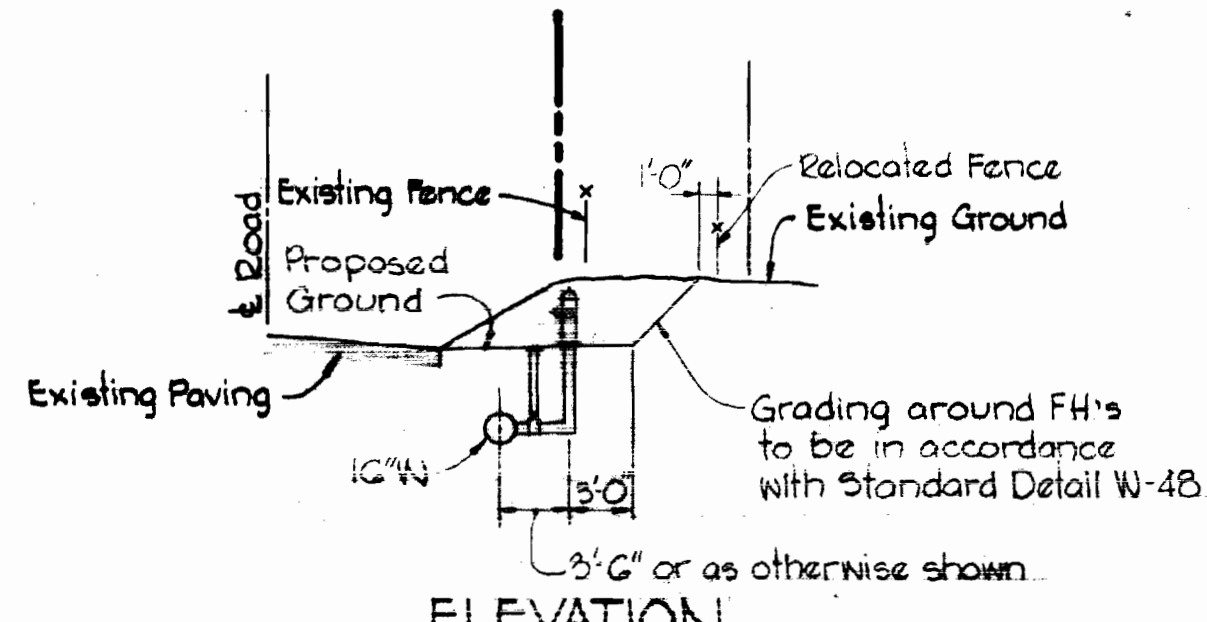
25 BUILT

WS 549-W/7

MURRAY HILL ROAD



PLAN

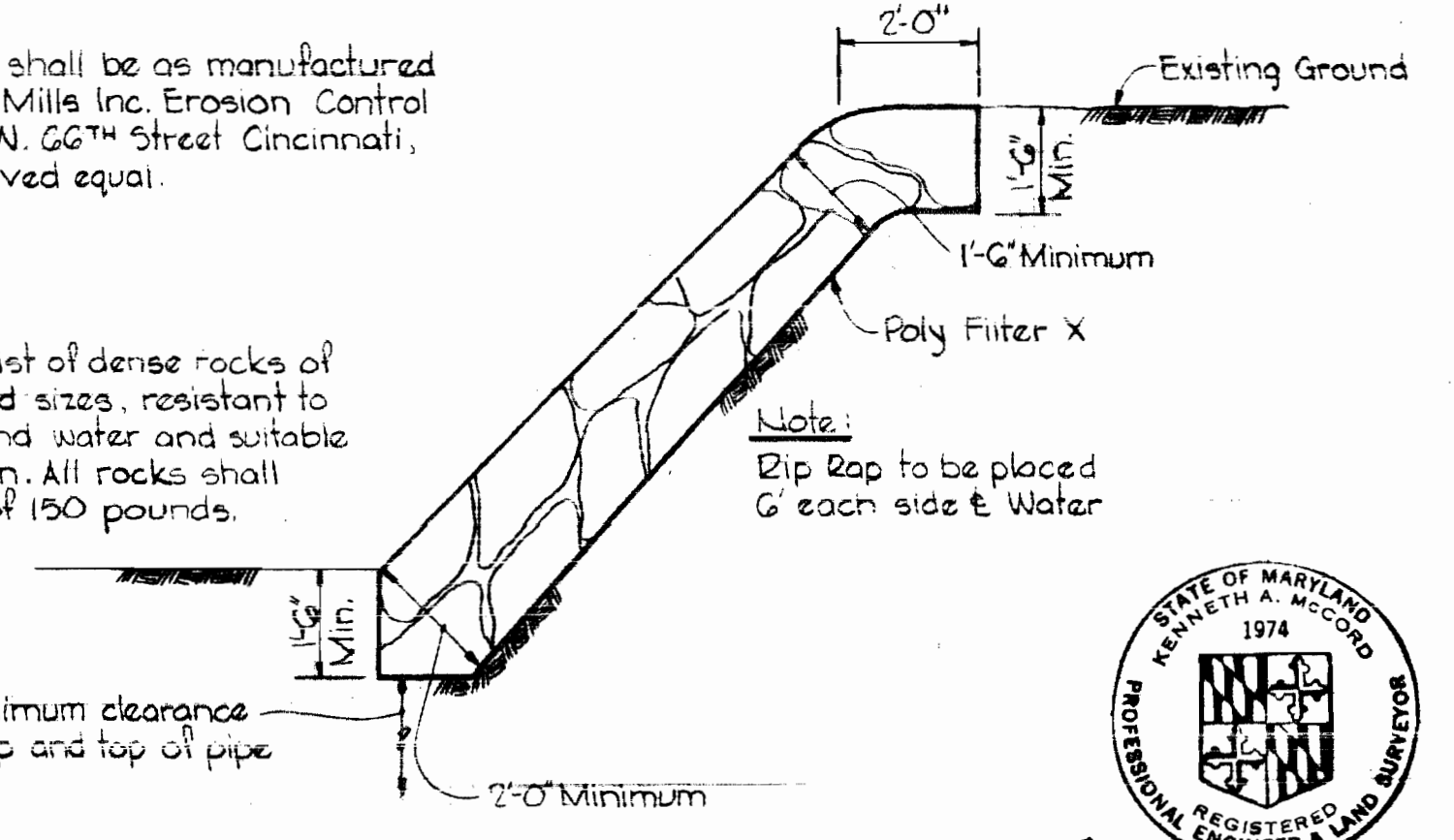


ELEVATION

TYPICAL FH SETTING
Scale: 1" = 10'

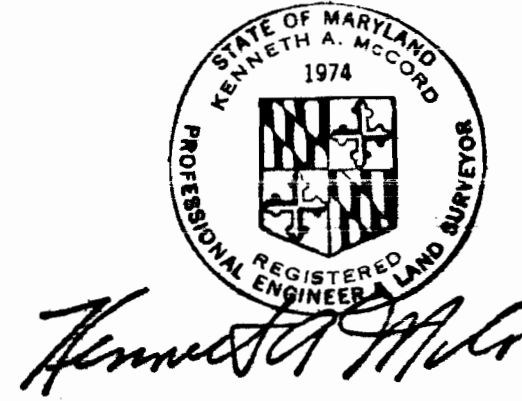
Note:
Poly Filter X shall be as manufactured by Carthage Mills Inc. Erosion Control Division, 124 W. 66th Street Cincinnati, Ohio or approved equal.

Rip Rap shall consist of dense rocks of random shapes and sizes, resistant to the action of air and water and suitable for bank protection. All rocks shall weigh a minimum of 150 pounds.



RIP RAP DETAIL
Scale: 3/8" = 1'-0"

Note:
Payment for Rip Rap will be included in the unit price bid for excavation and backfill.



Kenneth M. Wood

Project No. W.P. 2087
Contract No. 549-W

WHITMAN, REQUARDT & ASSOCIATES
ENGINEERS
1304 ST. PAUL ST.
BALTIMORE, MARYLAND

DEPARTMENT OF PUBLIC WORKS
HOWARD COUNTY, MARYLAND
11-20-73 DATE
W.O. Falbert
CHIEF-BUREAU OF ENGINEERING

CONTRACT NO. 549-W

PROFILES AND DETAILS
OF WATER MAINS

ELECTION DISTRICT
GULFORD NO. 6

DRAWING NO. 8 OF 8 SCALE AS SHOWN

W. O. 6601-2

NOV 13, 1974

AS BUILT

WS 549-w/8

BRINING 44-510 18362