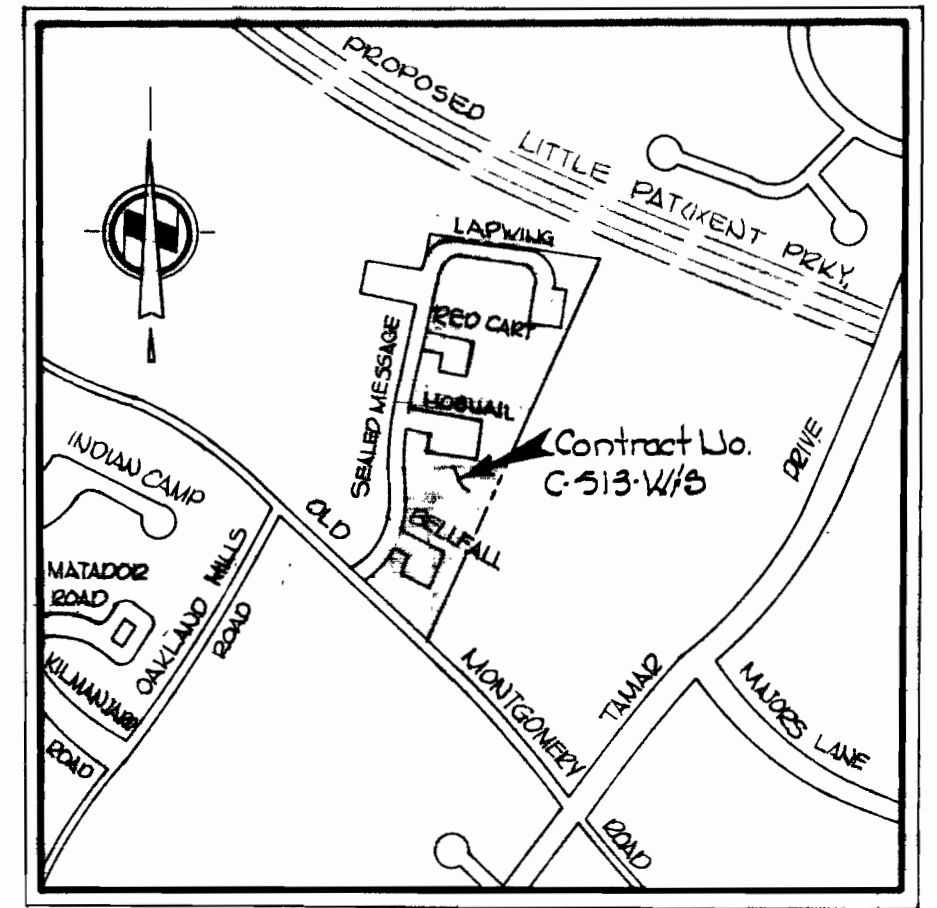


GENERAL NOTES

1. Approximate location of existing mains are shown. The Contractor shall take all necessary precautions to protect existing mains and services and maintain uninterrupted supply. Any damage incurred shall be repaired immediately.
2. All pipe elevations shown are invert \ominus elevations.
3. The Contractor shall locate existing utilities a minimum of two weeks in advance of construction operations in vicinity of utilities.
4. For all standard details see standards bound in Specifications.
5. Clear all utilities by a minimum of 6'; clear all poles by 2'-0" minimum or tunnel as required.
6. The Contractor shall provide a joint in all sewer mains within 2'-0" of exterior manhole walls.
7. All manholes shall be 4'-0" inside diameter.
8. All water mains to have a minimum of 3 1/2' cover unless otherwise noted.
9. Block all fittings with concrete, see standards bound in Specifications.
10. Bury line elevations on fire hydrants shall be set to the elevations shown on the drawings.
11. All fire hydrants shall be strapped to the tee and shall be buttressed with concrete in accordance with standard details.
12. All W.H.C.'s to be 1" diameter unless otherwise noted.
13. All horizontal and vertical controls are based on Maryland State Datum.



VICINITY MAP
Scale: 1"=600'

QUANTITIES	
8" Sewer	1550'
6" Water	1080'
3" Water	900'
Fire Hydrants	3

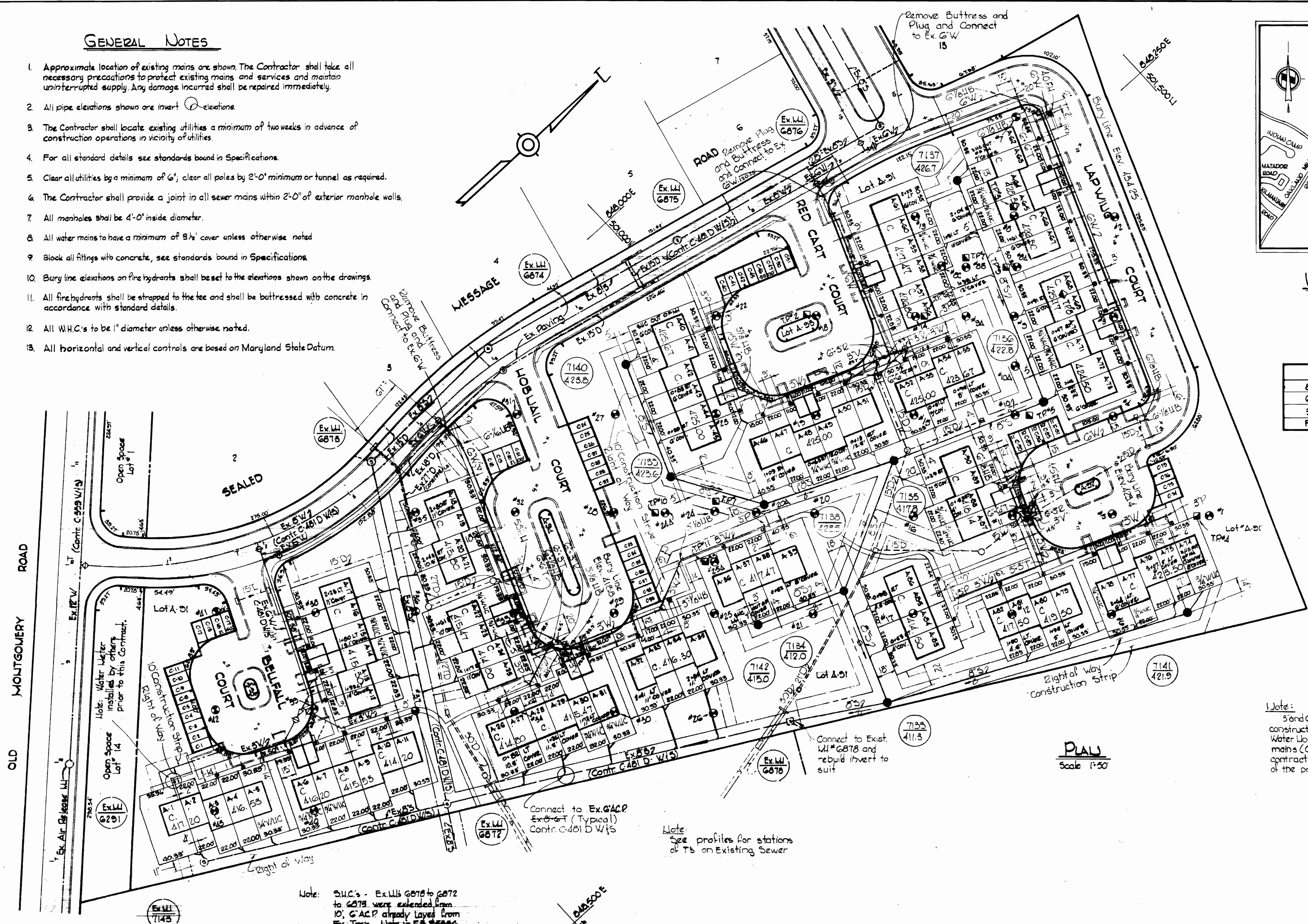
LEGEND

- Rock Probing
- Test Pit

Note:
For Rock Probing and Test Pits
Information see Specifications.

Note:
3" and 6" Water in Bellfall Court was constructed under Contract No. C481D W/S. Water House Connections, including tapping the mains (C.I.P.), will be constructed under this contract. Payment will be made under Part 'B' of the proposal.

PLAN
Scale 1"=50'



Note:
S.H.C.'s - Ex. W/S 6878 to 6872 to 6878 were extended from 10' G'ACP already layed from Ex. Twp's. Lots in P.B. #5886, R. #8.

Note:
See profiles for stations of T5 on Existing Sewer

As-Built
Shutoff and Derry FIB#5556
ALL SEWER ACP
ALL WATER CIP

Village of Longreach
Parcel 1A
Section 1, Area G
Contract No. C-513 W/S

Thomas J. Hines

WHITMAN, REQUARDT & ASSOCIATES
ENGINEERS
1304 ST. PAUL ST.
BALTIMORE, MARYLAND

DEPARTMENT OF PUBLIC WORKS
HOWARD COUNTY, MARYLAND
10-27-72
DATE

CONTRACT NO. C-513 W/S

PLAN OF
WATER & SEWER MAINS

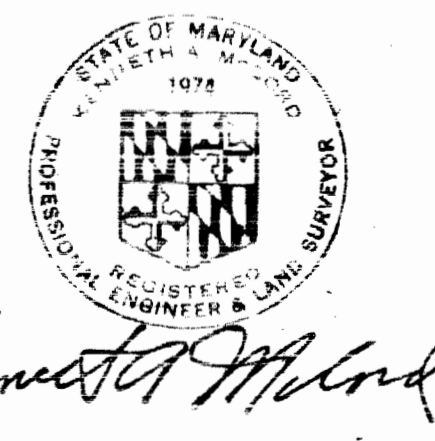
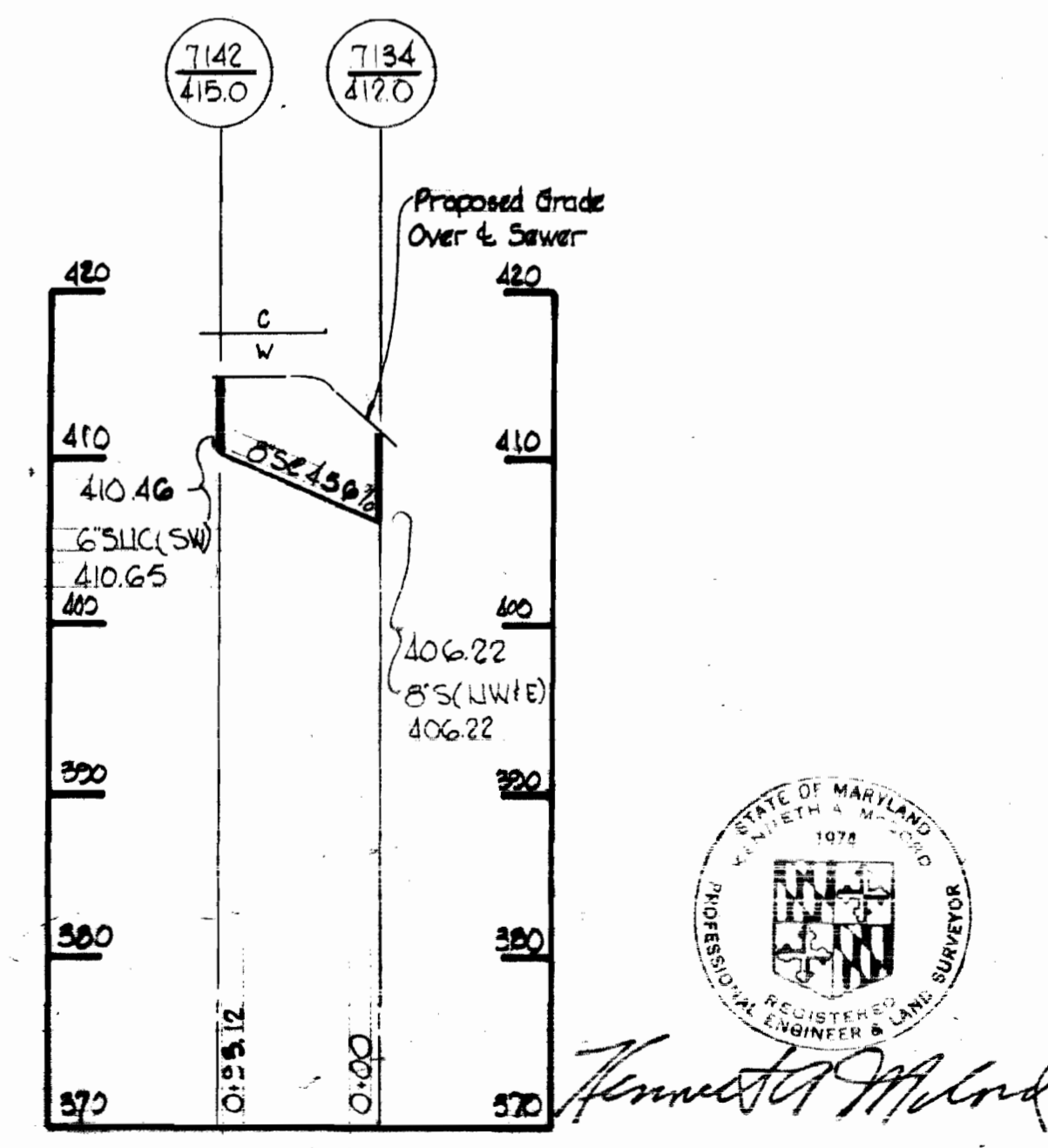
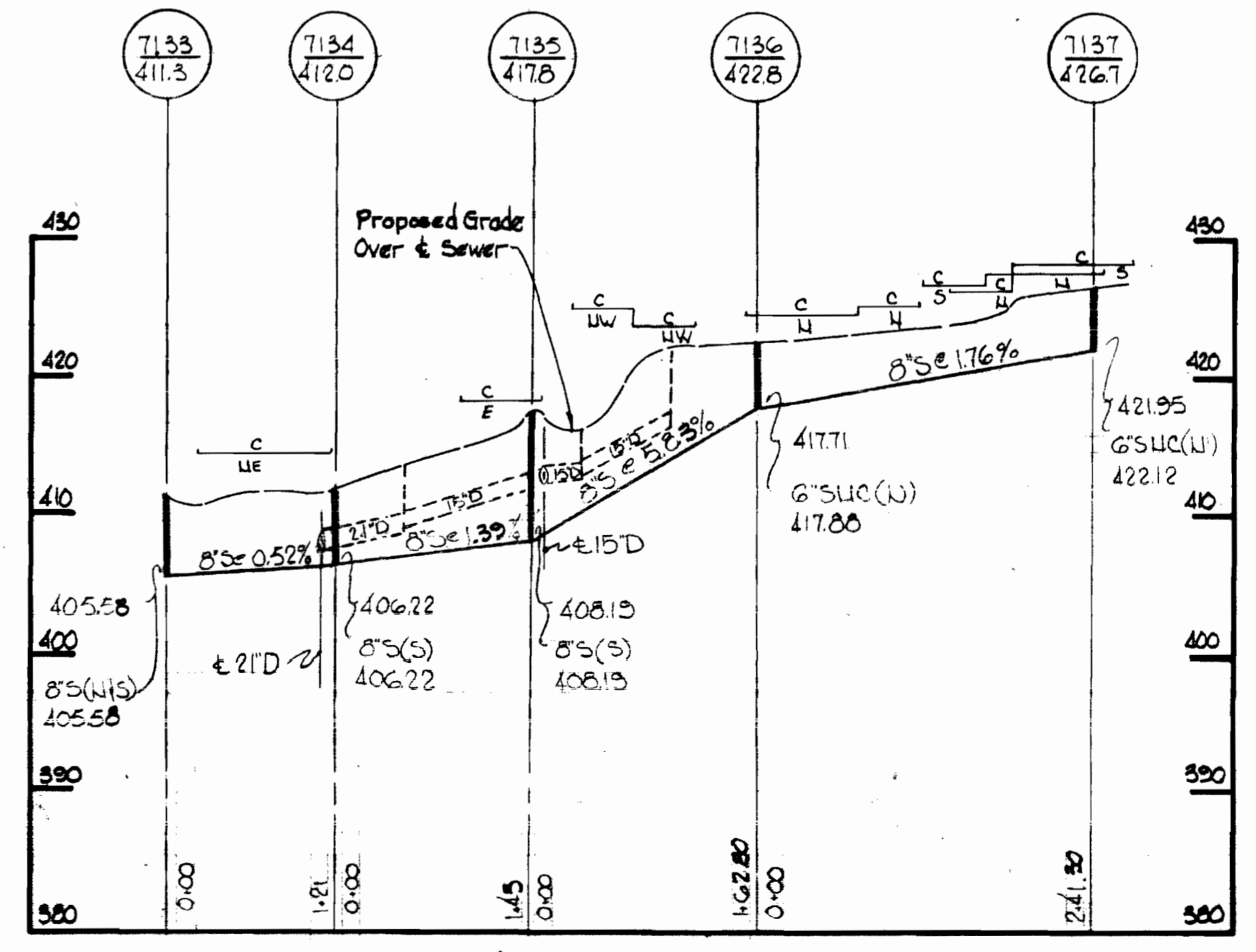
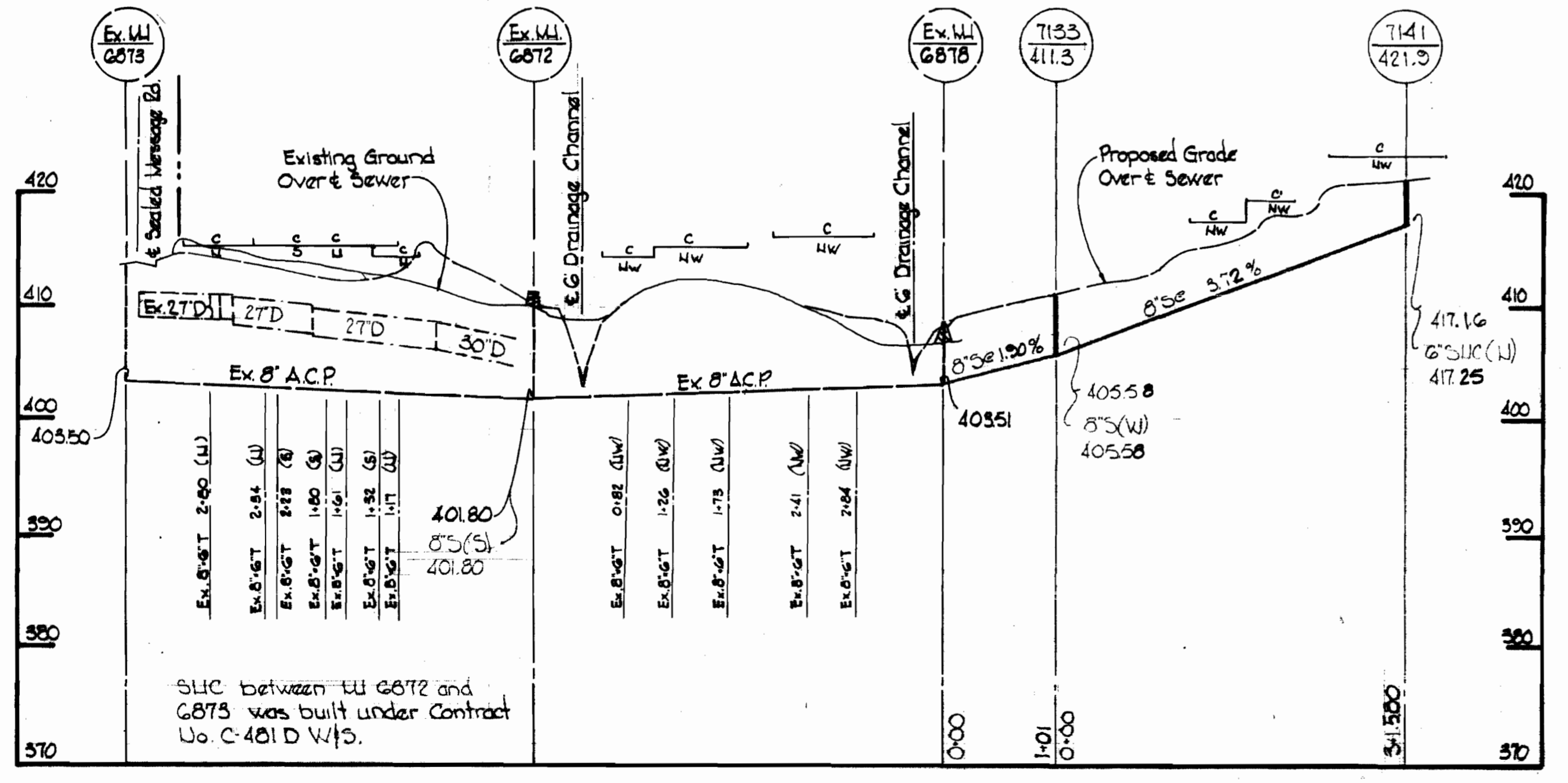
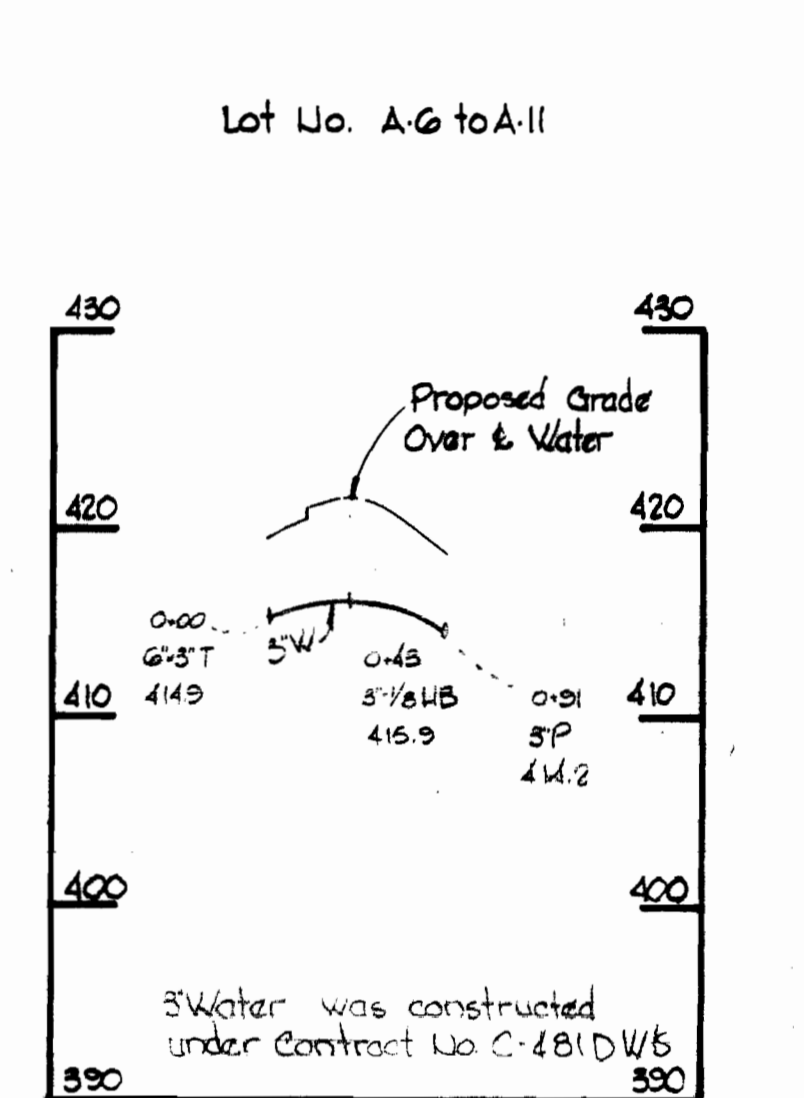
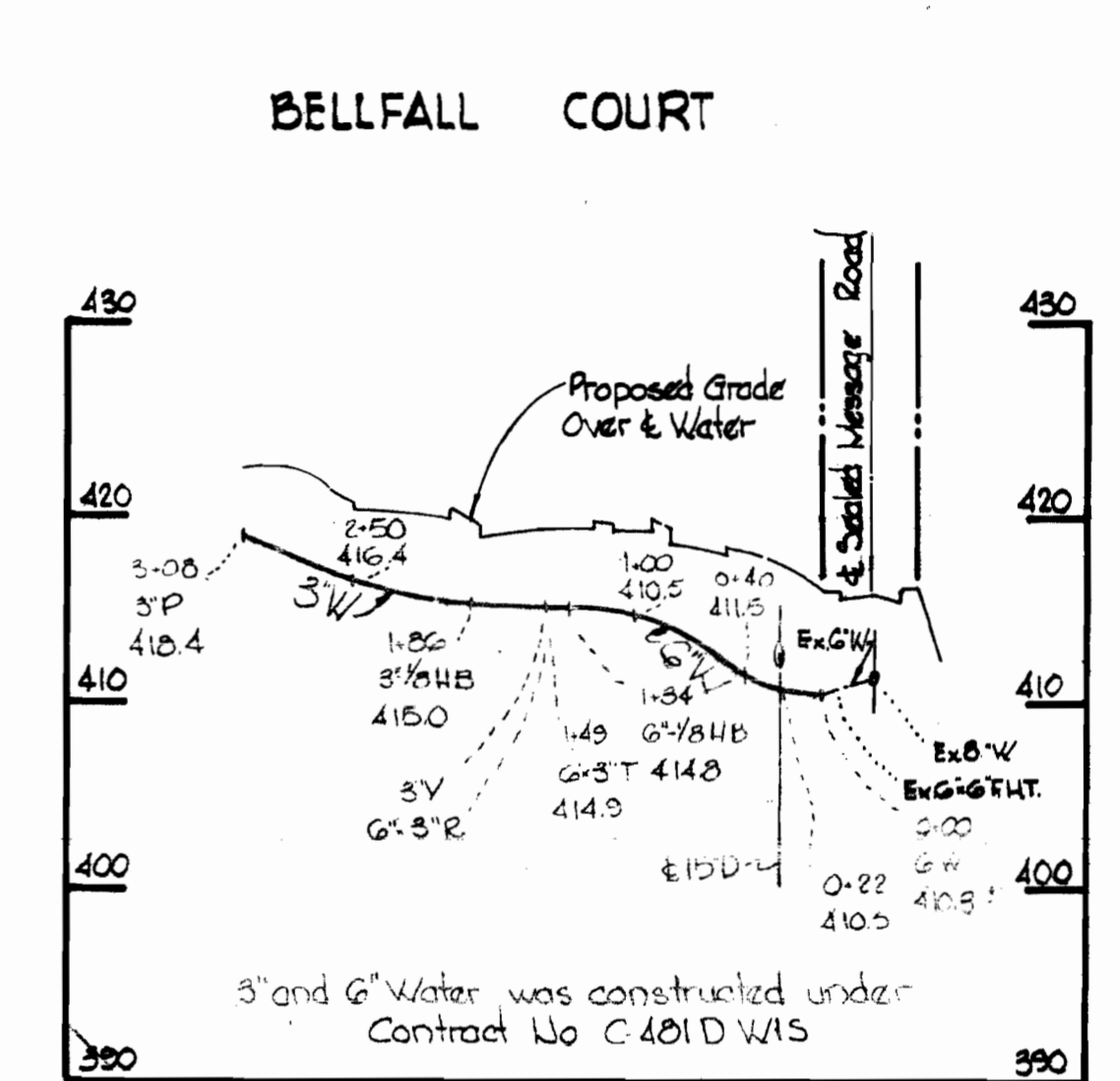
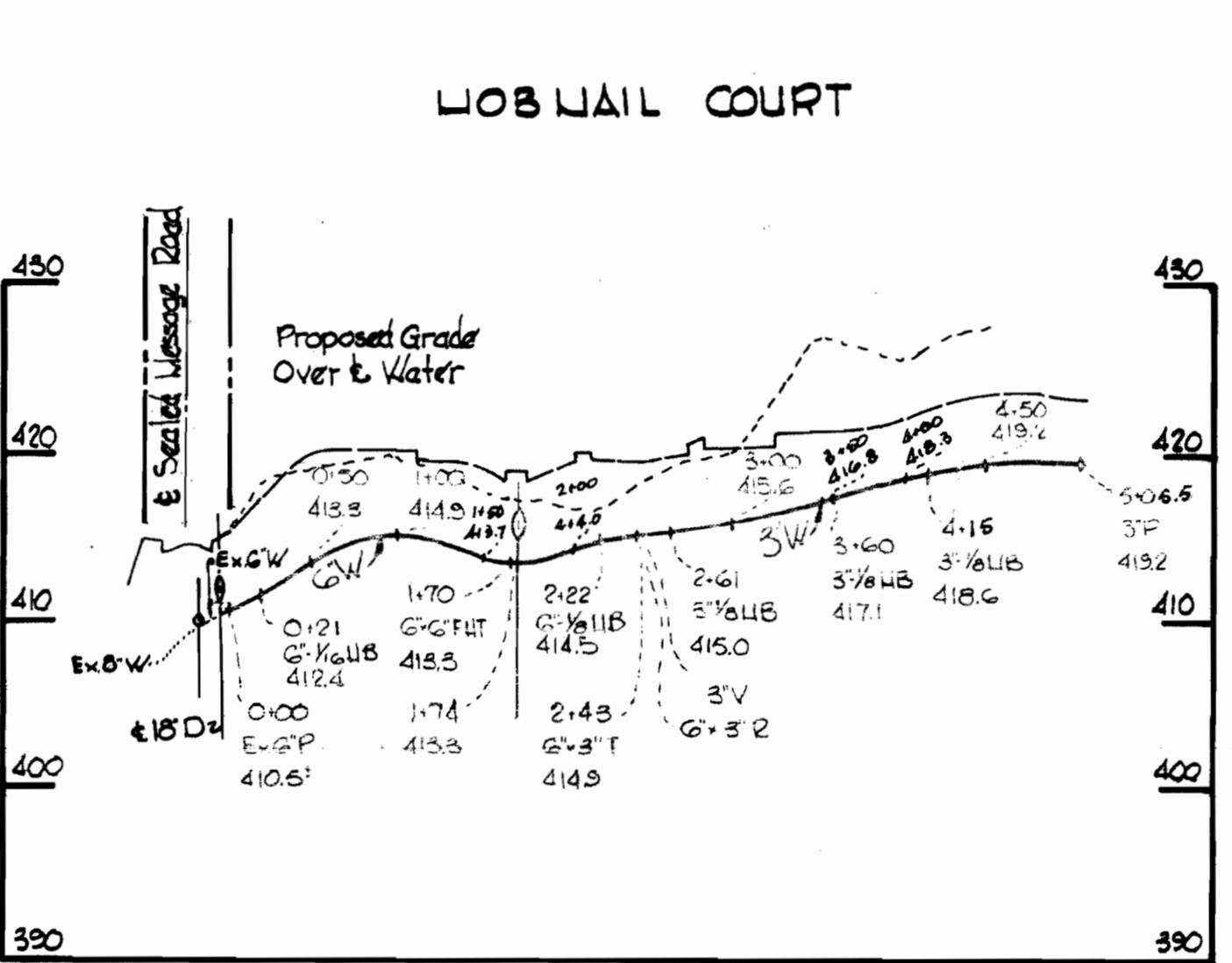
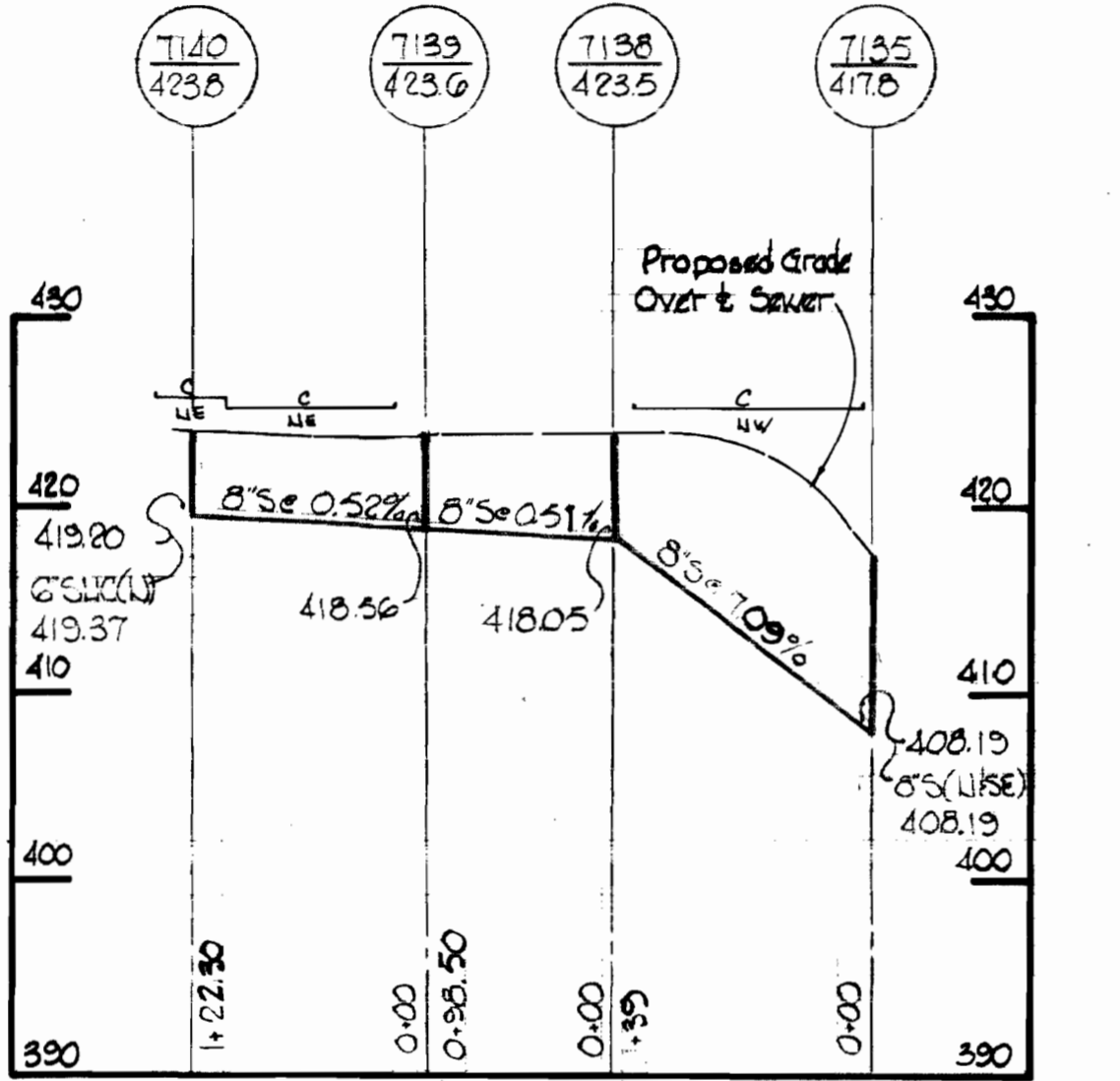
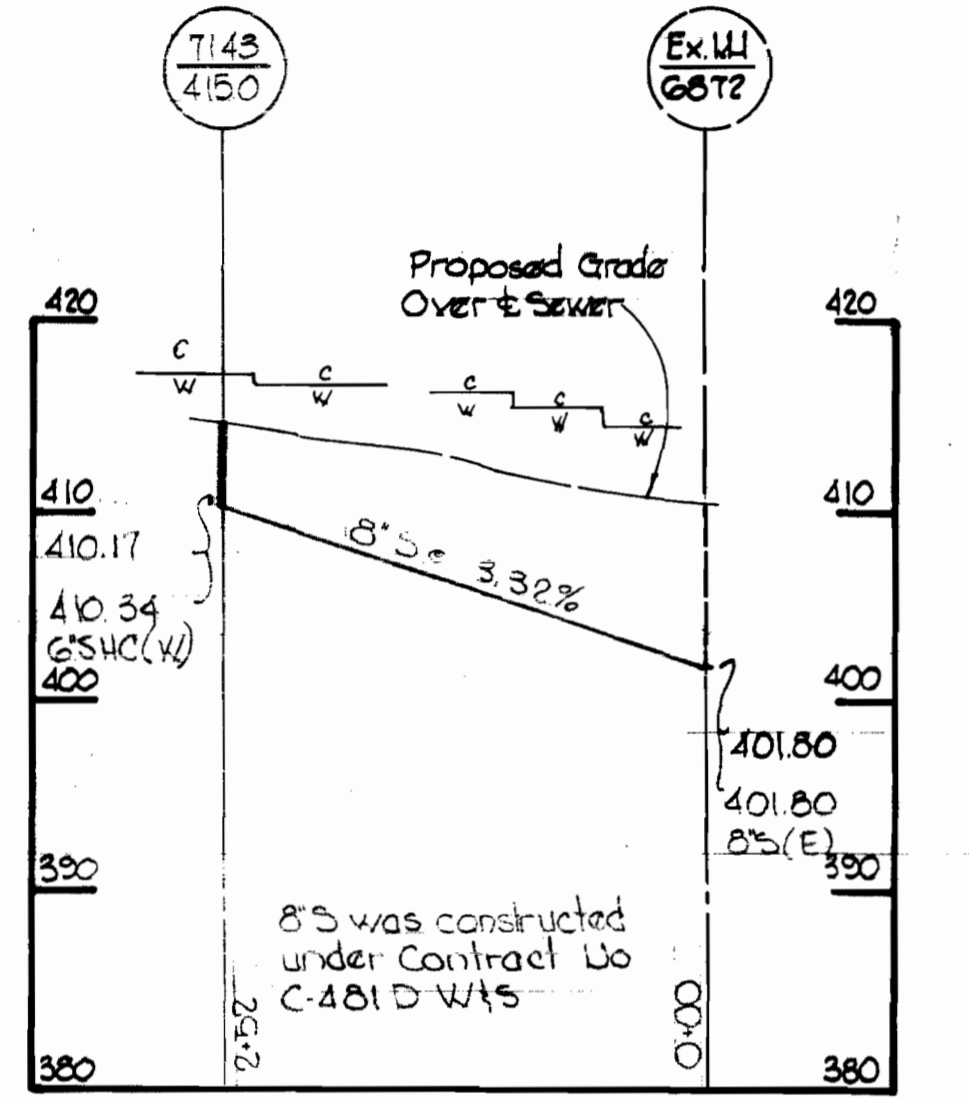
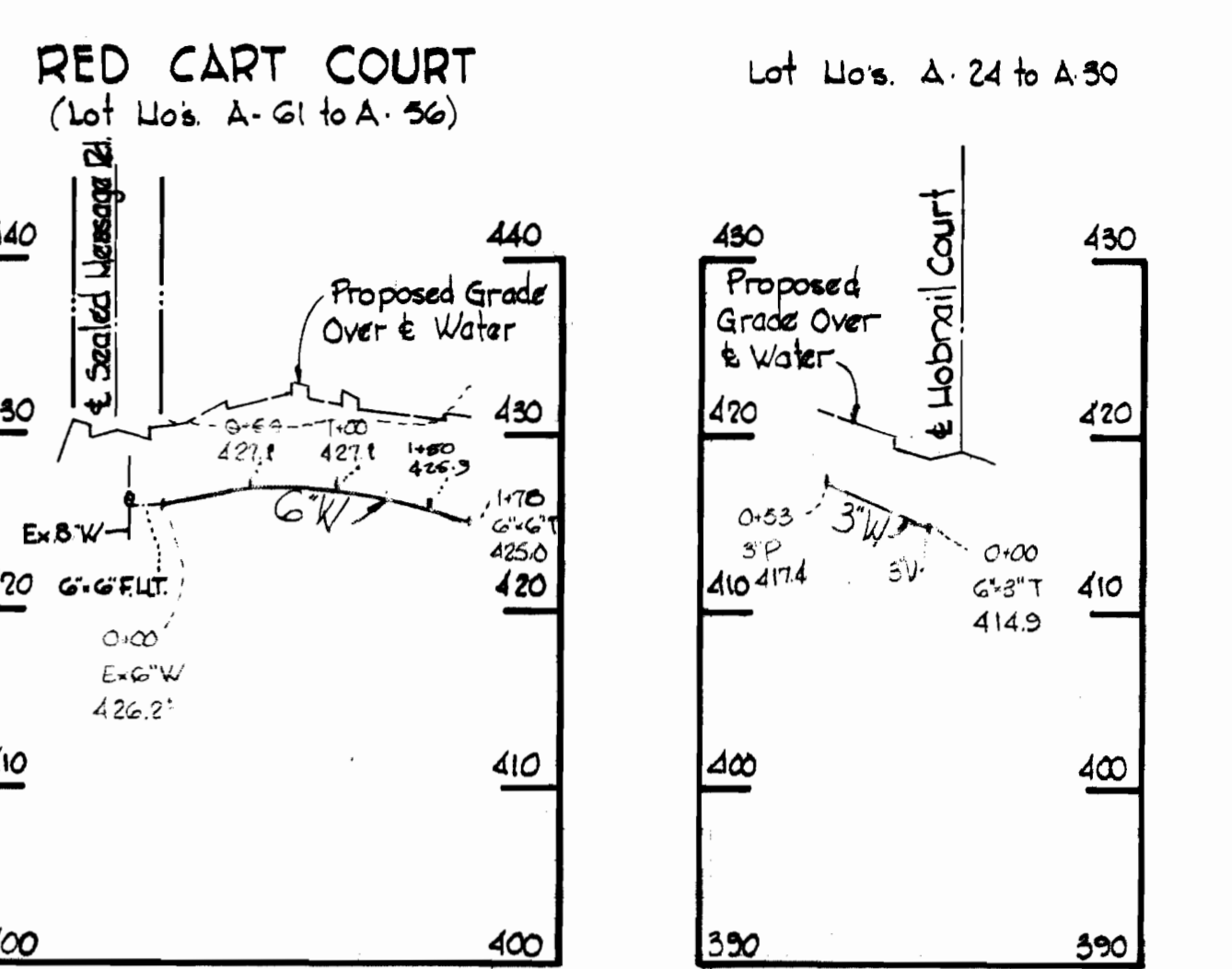
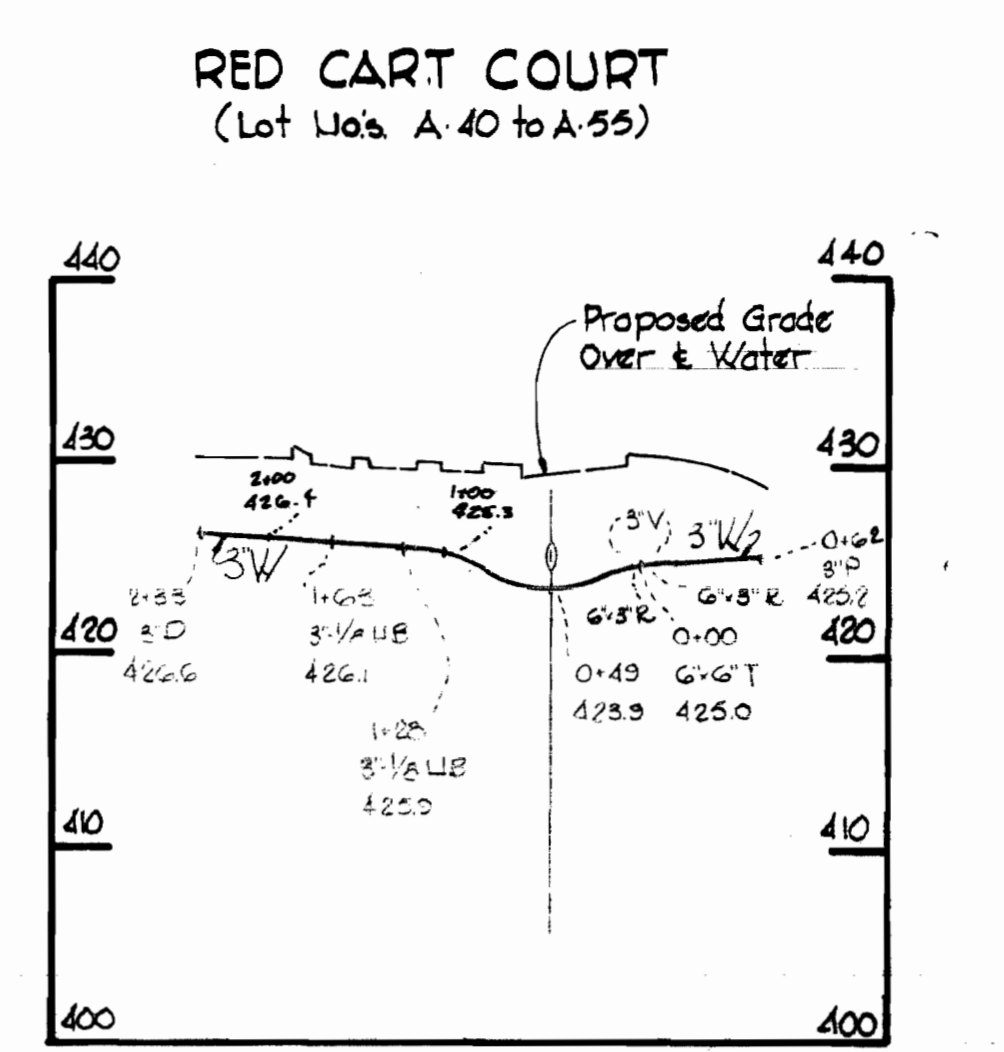
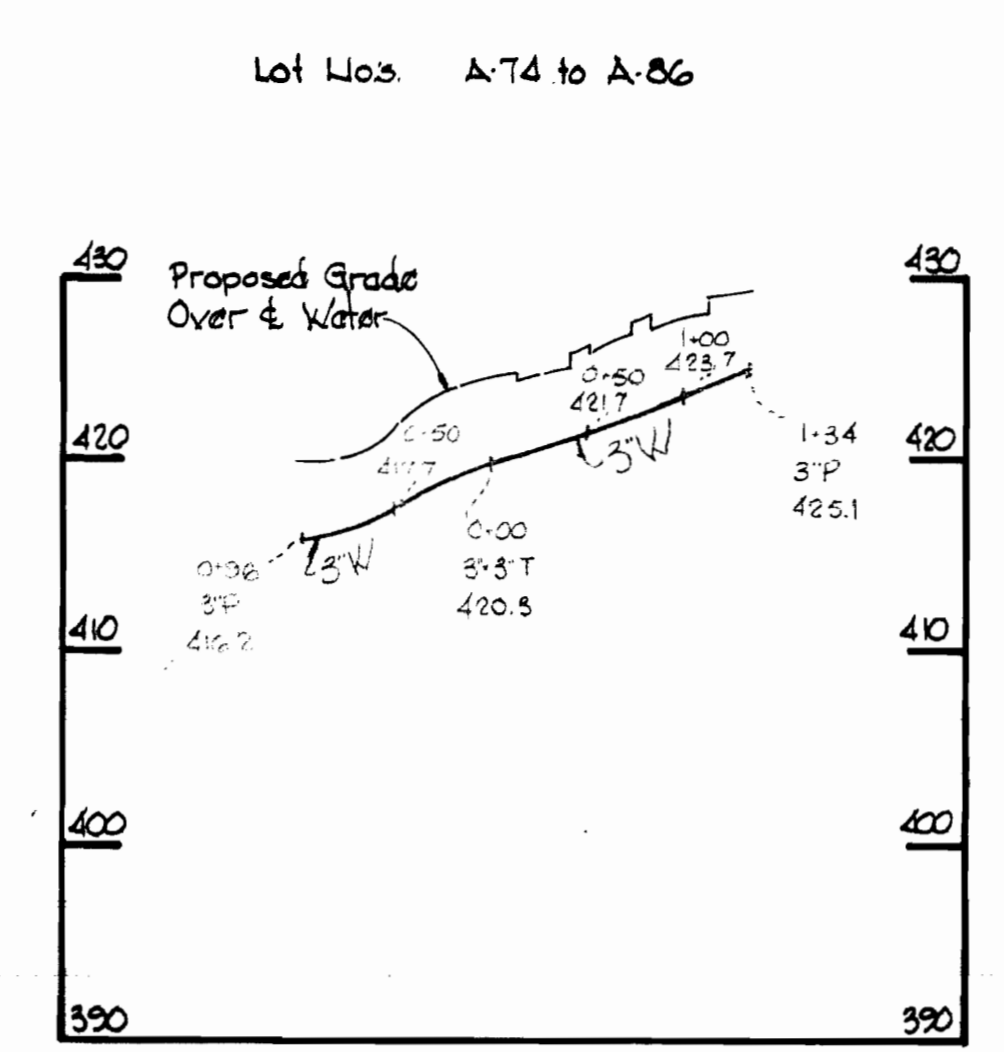
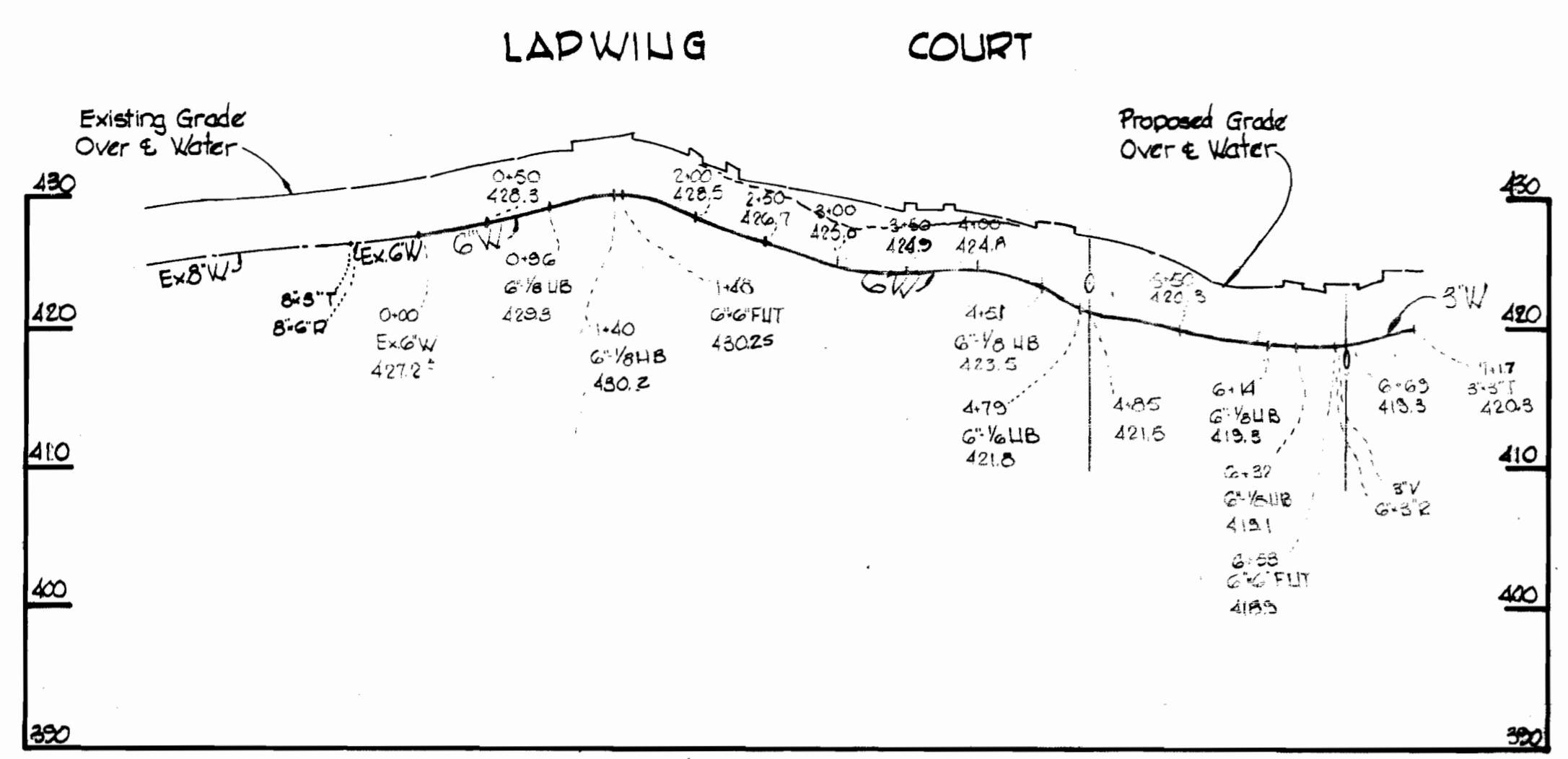
COLUMBIA
VILLAGE OF LONGREACH
ELECTION DISTRICT GUILFORD NO. 6

DRAWING
NO. 1
OF 2

SCALE
AS
SHOWN

WS 513-W4S/2

BRUNING 44-510 14778



ALL SEWER - ACP
ALL WATER - CIP (3" Class B)

Village of Longreach
Panel A
Section 1, Area G
Contract No. C-513 W4S

WHITMAN, REQUARDT & ASSOCIATES ENGINEERS 1304 ST. PAUL ST. BALTIMORE, MARYLAND	DEPARTMENT OF PUBLIC WORKS HOWARD COUNTY, MARYLAND 10-27-72 DATE	CONTRACT NO. C-513 W4S <i>W. O. Palumbo</i> CHIEF - BUREAU OF WATER AND SEWER	PROFILES OF WATER & SEWER MAINS	COLUMBIA VILLAGE OF LONGREACH ELECTION DISTRICT GULFORD NO. 6	DRAWING NO. 2 OF 2	SCALE H:V 1"=10' V:1"=10'
--	--	--	--	--	---	--

W. O. 6023-2

April 23, 1973 AS BUILT