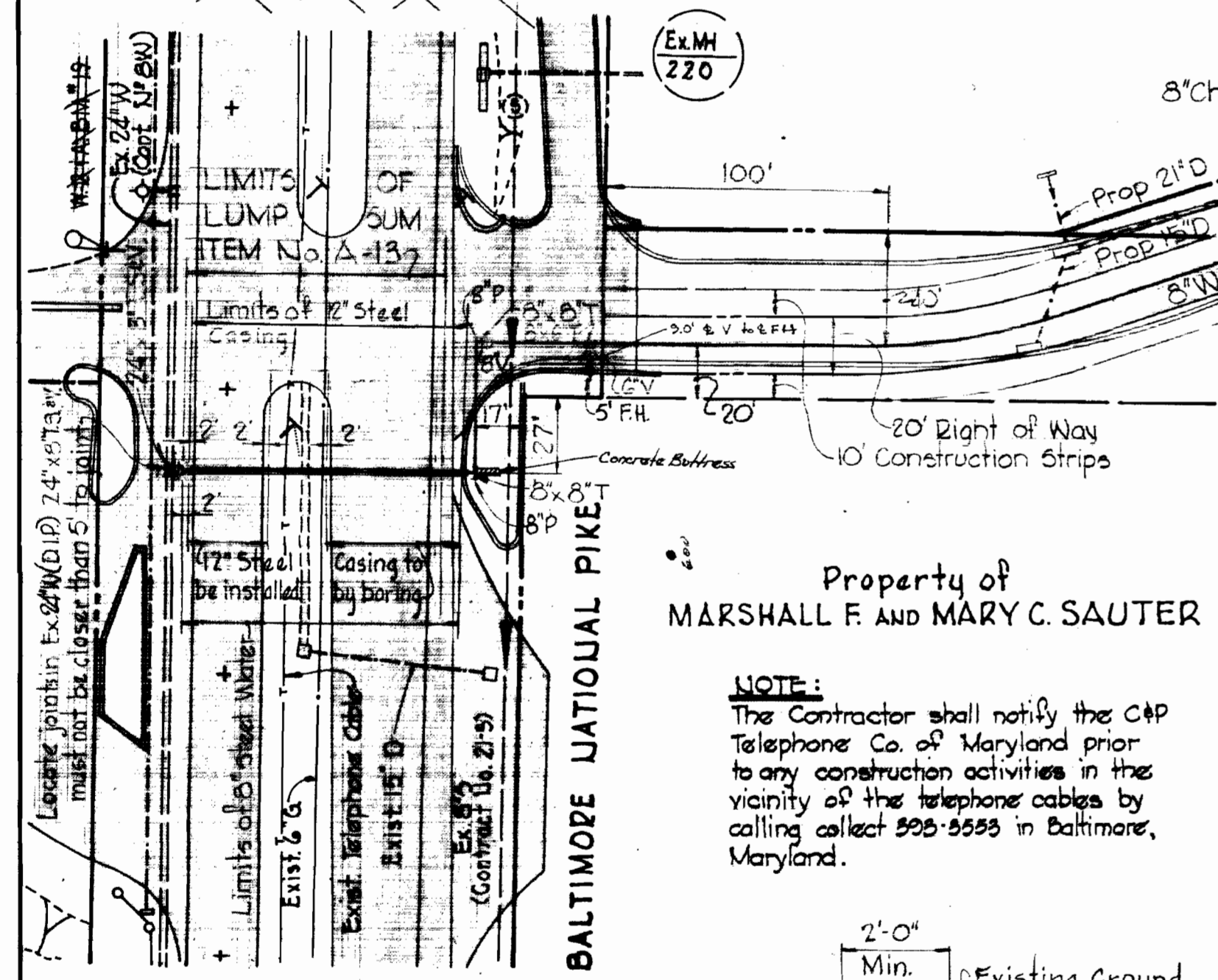


**PROFILE**

Scale: Horiz. 1"=100'  
Vert. 1"=10'

W.P.A. BM. 19 Elev. 364.08  
RR Spike in CIP Pole 5 on U. side of Rt. 40 E. side of dirt road 100' E. of B.P. Station.

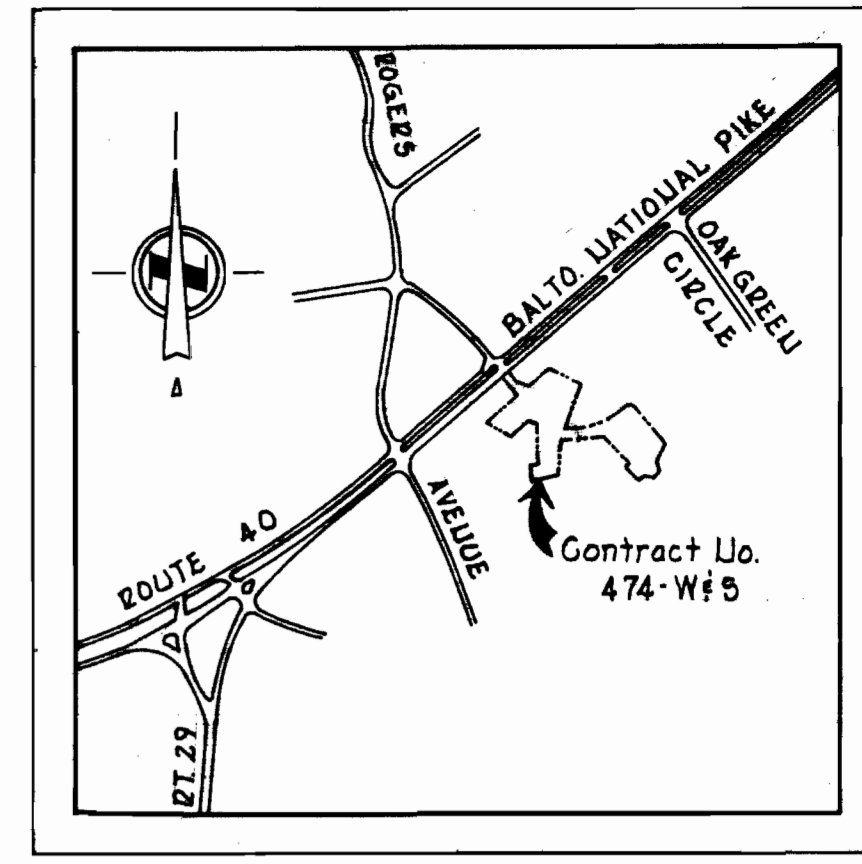


**RIP-RAP DETAIL**

Scale: 3/8"=1'-0"

Rip-Rap to consist of dense rocks of random shapes and sizes, resistant to the action of air and water, and suitable for bank protection. All rocks shall weigh a minimum of 150 pounds.

NOTE: Poly Filter X shall be as manufactured by Carthage Mills, Inc. Erosion Control Division, 124 W. 66<sup>th</sup> Street, Cincinnati, Ohio, or approved equal.



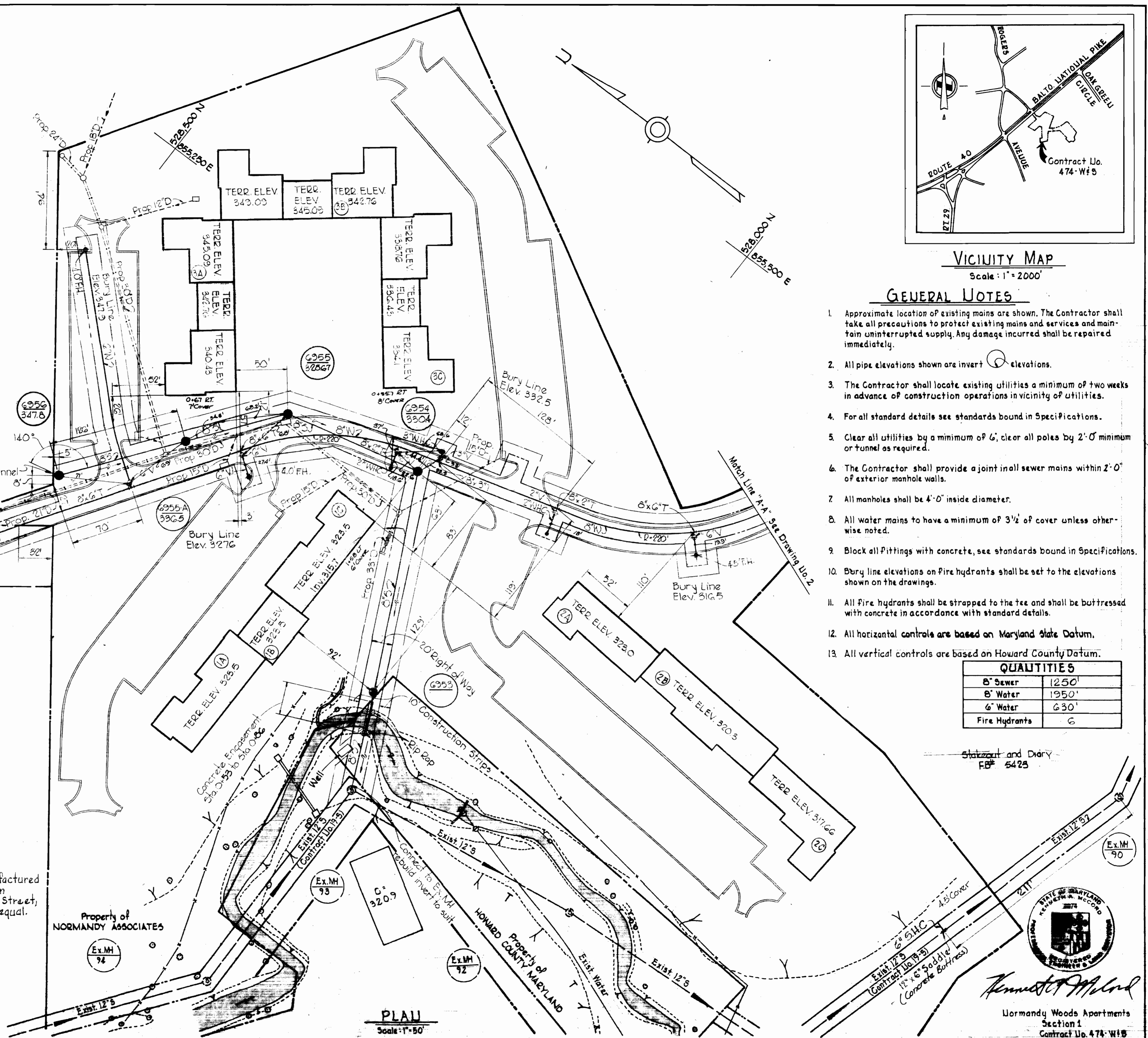
**VICINITY MAP**

Scale: 1"=2000'

**GENERAL NOTES**

- Approximate location of existing mains are shown. The Contractor shall take all precautions to protect existing mains and services and maintain uninterrupted supply. Any damage incurred shall be repaired immediately.
- All pipe elevations shown are invert elevations.
- The Contractor shall locate existing utilities a minimum of two weeks in advance of construction operations in vicinity of utilities.
- For all standard details see standards bound in Specifications.
- Clear all utilities by a minimum of 6'; clear all poles by 2'-0" minimum or tunnel as required.
- The Contractor shall provide a joint in all sewer mains within 2'-0" of exterior manhole walls.
- All manholes shall be 4'-0" inside diameter.
- All water mains to have a minimum of 3 1/2' of cover unless otherwise noted.
- Block all Fittings with concrete, see standards bound in Specifications.
- Bury line elevations on fire hydrants shall be set to the elevations shown on the drawings.
- All fire hydrants shall be strapped to the tee and shall be buttressed with concrete in accordance with standard details.
- All horizontal controls are based on Maryland State Datum.
- All vertical controls are based on Howard County Datum.

QUANTITIES	
8" Sewer	1250'
8" Water	1950'
6" Water	630'
Fire Hydrants	6



**PLAN**

Scale: 1"=50'

**WHITMAN, REQUARDT & ASSOCIATES**  
ENGINEERS  
1304 ST. PAUL ST.  
BALTIMORE, MARYLAND

**DEPARTMENT OF PUBLIC WORKS**  
HOWARD COUNTY, MARYLAND  
4-23-73  
DATE

**CONTRACT NO. 474-WBS**

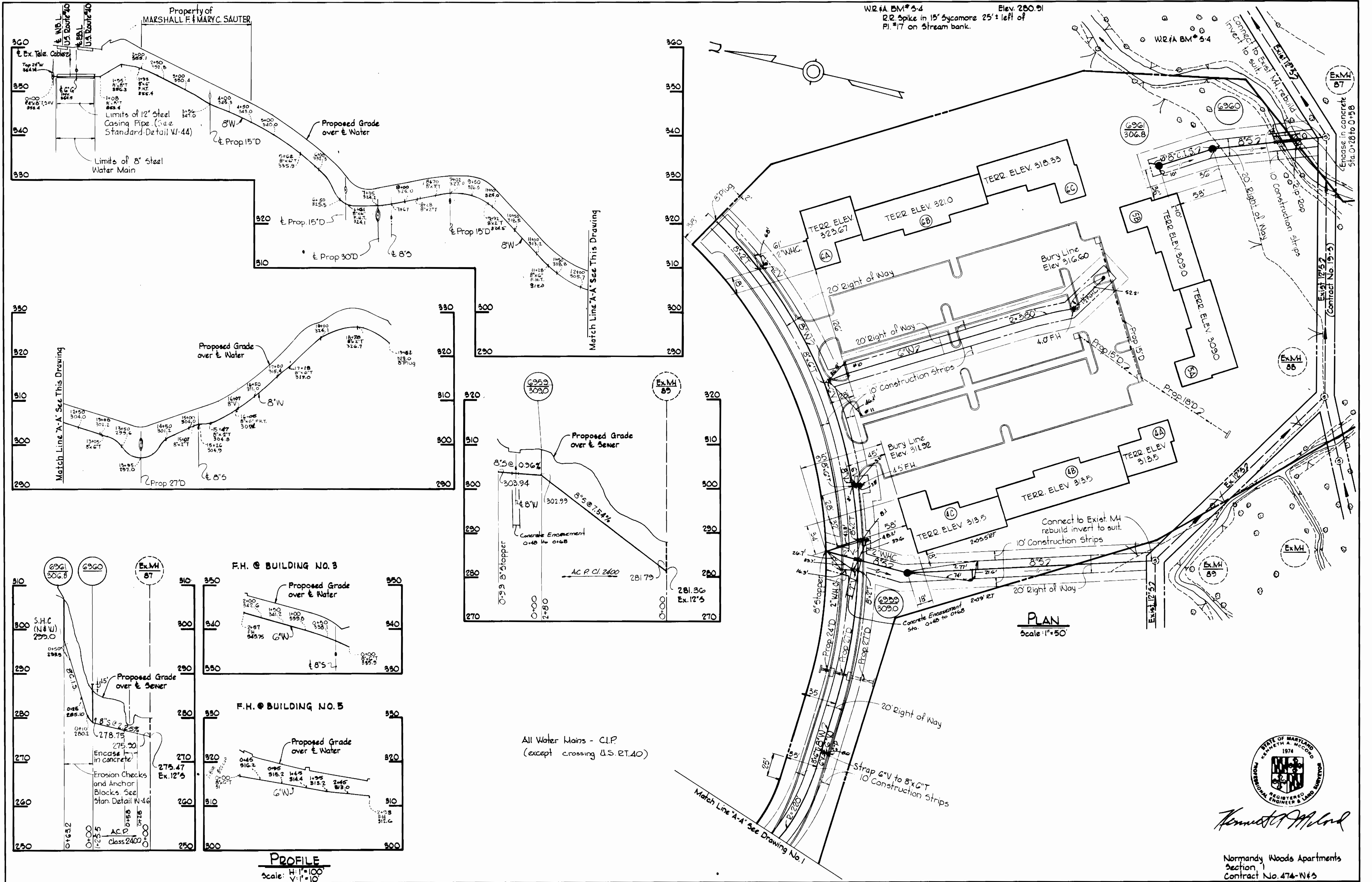
**PLAN AND PROFILE OF WATER & SEWER MAINS**

**ELECTION DISTRICT**  
**ELLCOTT CITY NO. 2**

**DRAWING NO. 1 OF 2**  
**SCALE AS SHOWN**

Normandy Woods Apartments  
Section 1  
Contract No. 474-WBS

NOV. 3, 1973  
AS BUILT



**WHITMAN, REQUARDT & ASSOCIATES**  
 ENGINEERS  
 1304 ST. PAUL ST.  
 BALTIMORE, MARYLAND

**DEPARTMENT OF PUBLIC WORKS**  
 HOWARD COUNTY, MARYLAND  
 DATE: 4-23-73  
 W. O. Falbert  
 CHIEF - BUREAU OF WATER AND SEWER

**CONTRACT NO. 474-W&S**

**PLAN AND PROFILES OF WATER & SEWER MAINS**

**ELECTION DISTRICT ELLICOTT CITY NO. 2**

**DRAWING NO. 2 OF 2**  
**SCALE AS SHOWN**



Normandy Woods Apartments  
 Section 1  
 Contract No. 474-W&S