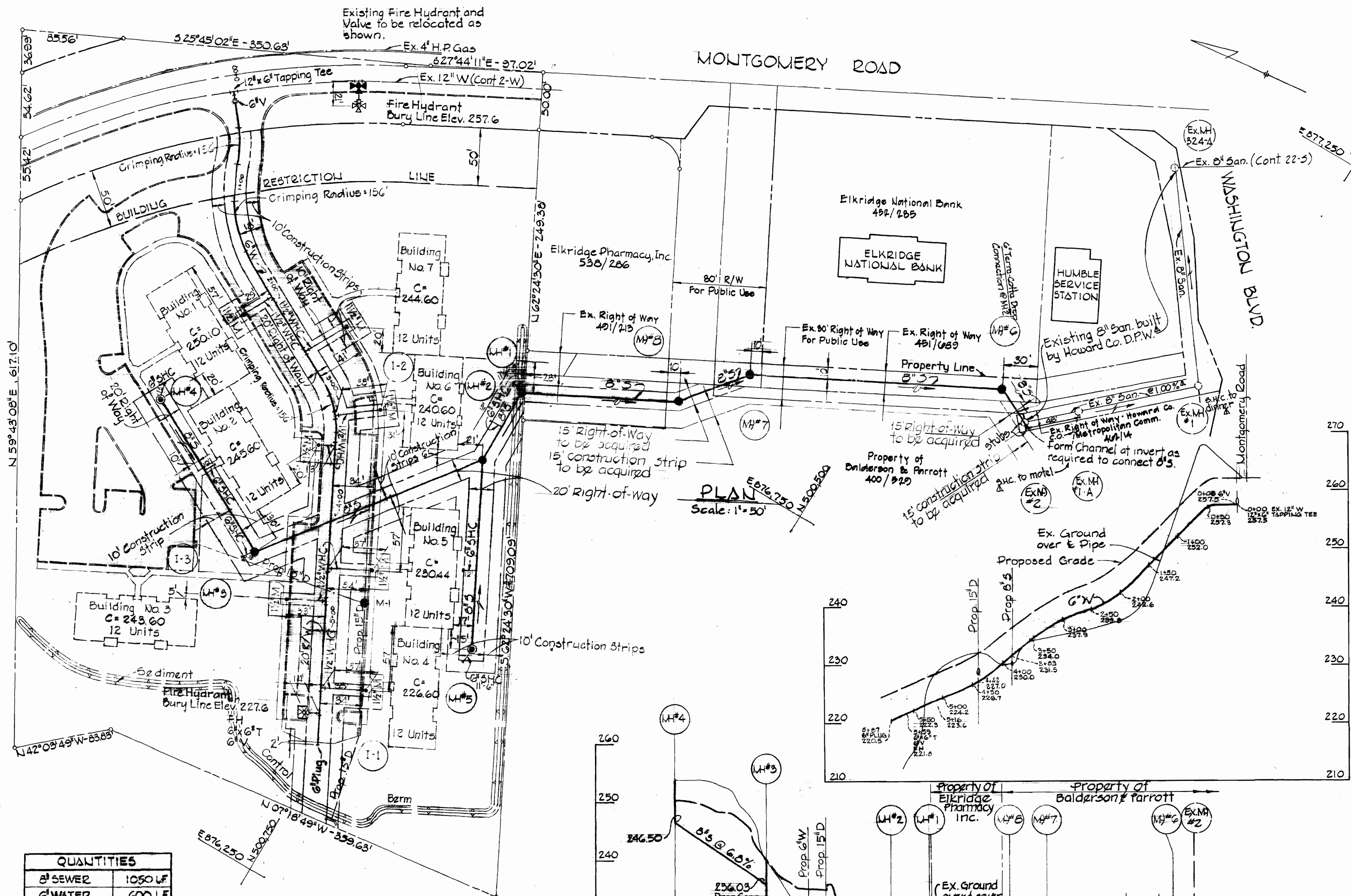


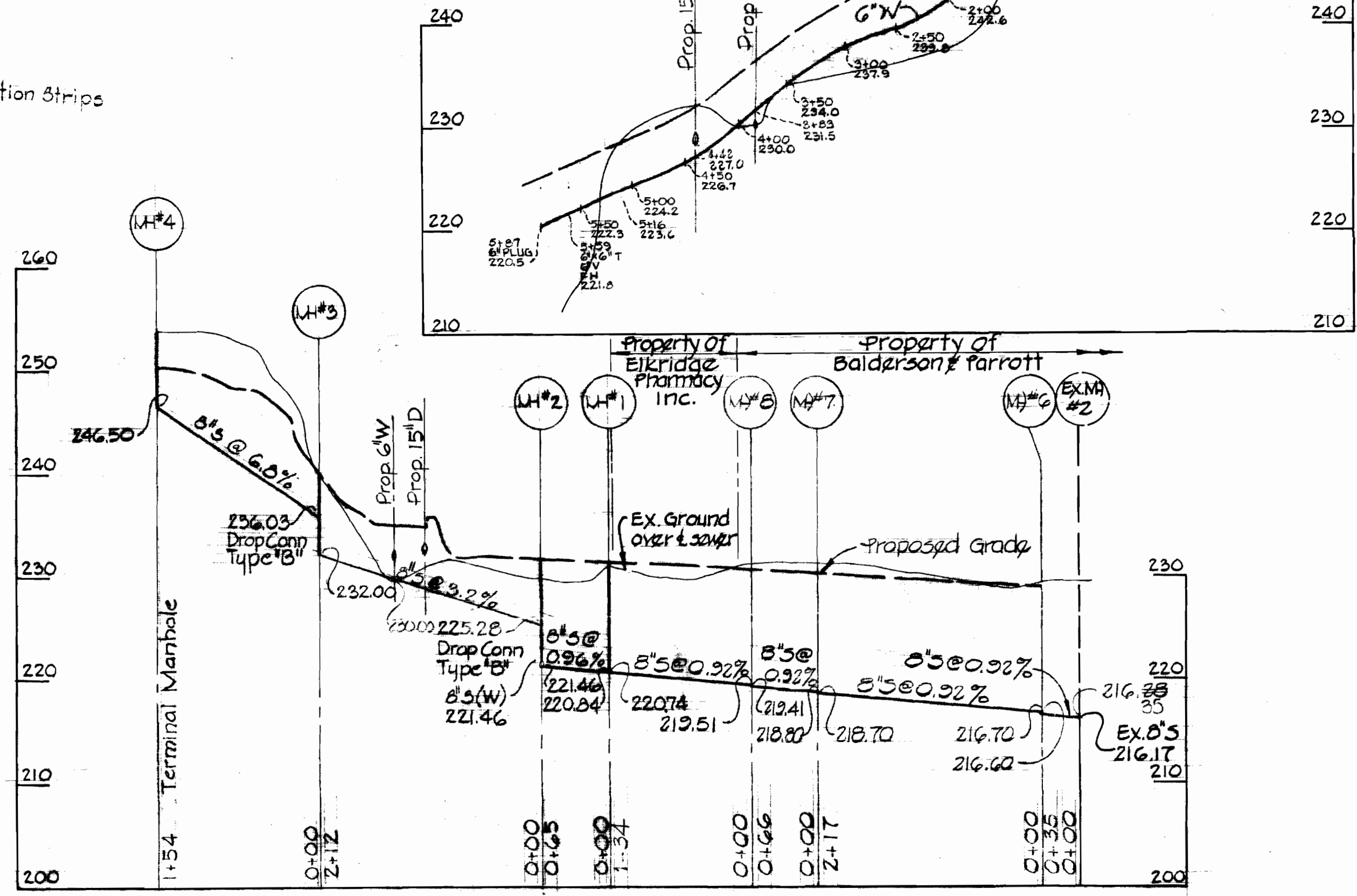
VICINITY MAP
Scale: 1"=2000'

GENERAL NOTES

- 1) Approximate locations of existing utilities are shown. The contractor shall take all necessary precautions to protect the existing utilities and to maintain uninterrupted service. Any damage incurred due to contractor's operations shall be repaired immediately at the contractor's expense.
- 2) All pipe elevations shown are invert elevations.
- 3) The contractor shall locate existing utilities a minimum of two weeks in advance of construction operations in the vicinity of utilities.
- 4) For all standard details see standards bound in specifications.
- 5) Block all water main fittings with concrete, see standards bound in specifications.
- 6) Clear all utilities by a minimum of 6", clear all utility poles by 21'-0" minimum or tunnel as required.
- 7) The contractor shall provide a joint in all sewer mains within 2'-0" of exterior manhole walls.
- 8) All manholes to be 4'-0" inside diameter.
- 9) All sewer house connections to be 6" diameter.
- 10) Bury Line Elevations on fire hydrants shall be set to the elevations shown on the plan.
- 11) Cost of strapping fire hydrants and valves to be included in the unit price bid for furnishing and installing fire hydrants.
- 12) All fire hydrants shall be strapped to the tee and shall be buttressed with concrete in accordance with standard details.
- 13) All W.H. connections shall be joined to the 6" water main according to Specifications.
- 14) All vertical and horizontal controls are based on Maryland State Datum.



PLAN
Scale: 1"=50'



PROFILES
Scale: Hor. 1"=100'
Vert. 1"=10'

QUANTITIES	
8" SEWER	1050 LF
6" WATER	600 LF
FIRE HYDRANTS	1 EA.

BENCH MARKS

- T.B.M. "X" ELEV. 235.37
CROSSCUT END OF CURBING, N. ENTRANCE ELKRIDGE NAT'L BANK.
- R.F.J. B.M.#3 ELEV. 231.72
R.R. SPIKE IN 48" OAK, 81" N, 32" W OF SPUR "A"
- P.F.J. B.M.#4 ELEV. 260.93
CROSSCUT ROAD SIDE BONNET BOLT OF FIRE HYDRANT ON MONTGOMERY ROAD.



NOTE: REVISED FOR NEW ALIGNMENT FROM MH #1 TO EX. MH #1
4' Rev. As Built to show info. on ex. 8" San. Aug 84.

PURDUM & JESCHKE ENGINEERS 1023 N. CALVERT ST. BALTIMORE, MARYLAND	DEPARTMENT OF PUBLIC WORKS HOWARD COUNTY, MARYLAND <i>W. O. Albert</i> DATE: 8-21-72 CHIEF - BUREAU OF WATER AND SEWER	CONTRACT NO. 473 D-W & S	PLAN OF WATER & SEWER MAINS	LAWYER'S HILL APARTMENTS FIRST ELECTION DISTRICT	DRAWING NO. 1	SCALE AS SHOWN
					OF 1	