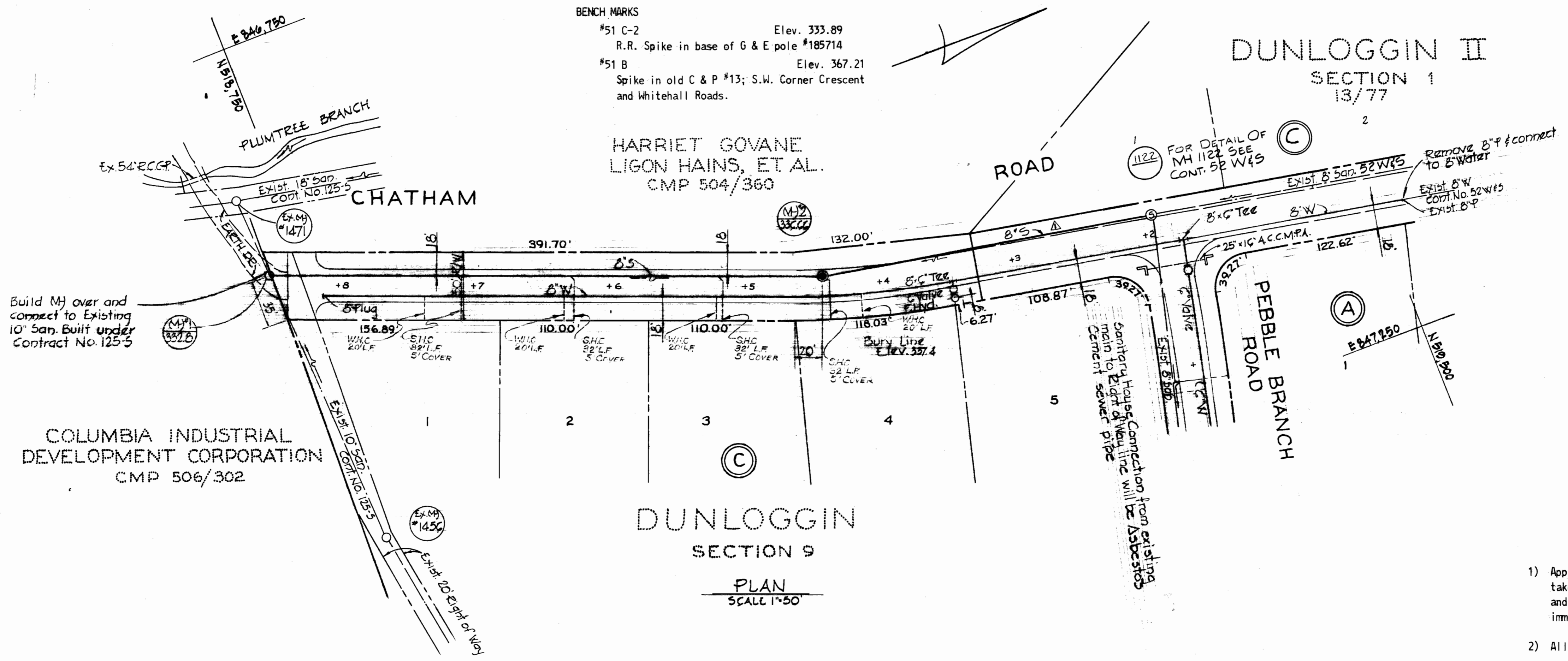


SUSPENSE

SUSPENSE

SUSPENSE

WS 471 - W4S/1



BENCH MARKS
 #51 C-2 Elev. 333.89
 R.R. Spike in base of G & E pole #185714
 #51 B Elev. 367.21
 Spike in old C & P #13; S.W. Corner Crescent and Whitehall Roads.

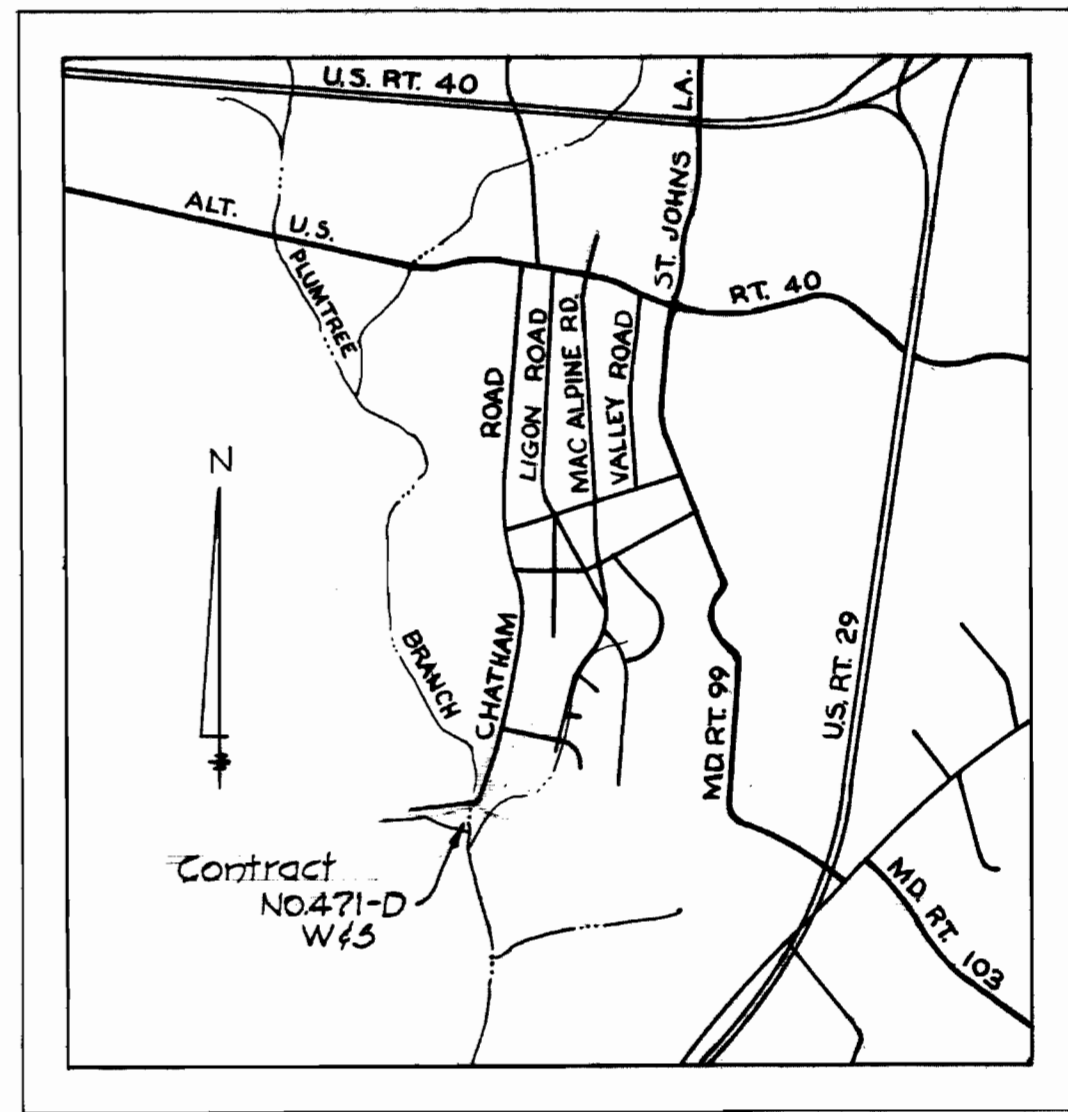
DUNLOGGIN II
 SECTION 1
 13/77

COLUMBIA INDUSTRIAL
 DEVELOPMENT CORPORATION
 CMP 506/302

HARRIET GOVANE
 LIGON HAINS, ET AL.
 CMP 504/360

DUNLOGGIN
 SECTION 9

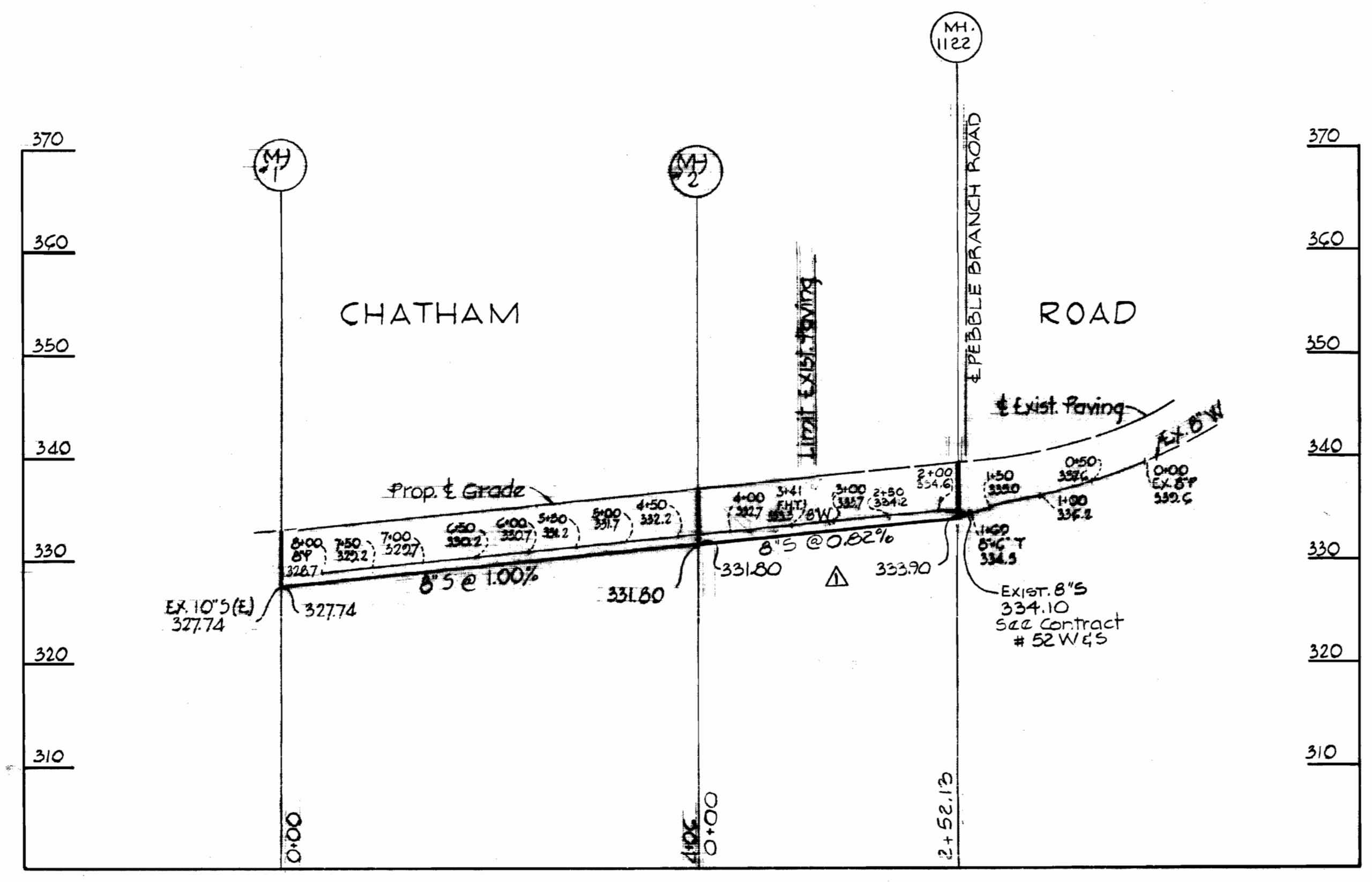
PLAN
 SCALE 1"=50'



VICINITY MAP
 Scale: 1"= 2000'

GENERAL NOTES

- 1) Approximate location of existing mains are shown. The Contractor shall take all necessary precautions to protect existing mains and services and maintain uninterrupted supply. Any damage incurred shall be repaired immediately.
- 2) All pipe elevations shown are invert elevations.
- 3) The Contractor shall locate existing utilities a minimum of two weeks in advance of construction operations in vicinity of utilities.
- 4) For all standard details see standards bound in Specifications.
- 5) All water mains shall have a minimum of 3 1/2' cover.
- 6) Block all fittings with concrete, see standards bound in Specifications.
- 7) Bury Line elevations on fire hydrants shall be set to the elevations shown on the drawings.
- 8) Cost of strapping fire hydrants and valves to be included in the unit price bid for furnishing and installing fire hydrants.
- 9) All fire hydrants shall be strapped to the tee and shall be buttressed with concrete in accordance with Standard Details.
- 10) Clear all utilities by a minimum of 6", clear all poles by 2'-0" minimum or tunnel as required.
- 11) All manholes shall be 4'-0" inside diameter.
- 12) The Contractor shall provide a joint within 2'-0" of exterior manhole walls.
- 13) All horizontal and vertical controls are based on Maryland State Datum.



PROFILE
 HOR. 1"=100'; VERT. 1"=10'

QUANTITIES	
8" Sewer	410 Ft.
8" Water	800 Ft.
6" Water	1525 Ft.
Fire Hydrants	2

No.	Date	Revision
1	3-23-76	Added Plan & Profile 252.15' of 8" S Main Ext. from Ex. MH. #2 to Ex. MH. #1122

PURDUM & JESCHKE
 ENGINEERS
 1023 N. CALVERT ST.
 BALTIMORE, MARYLAND

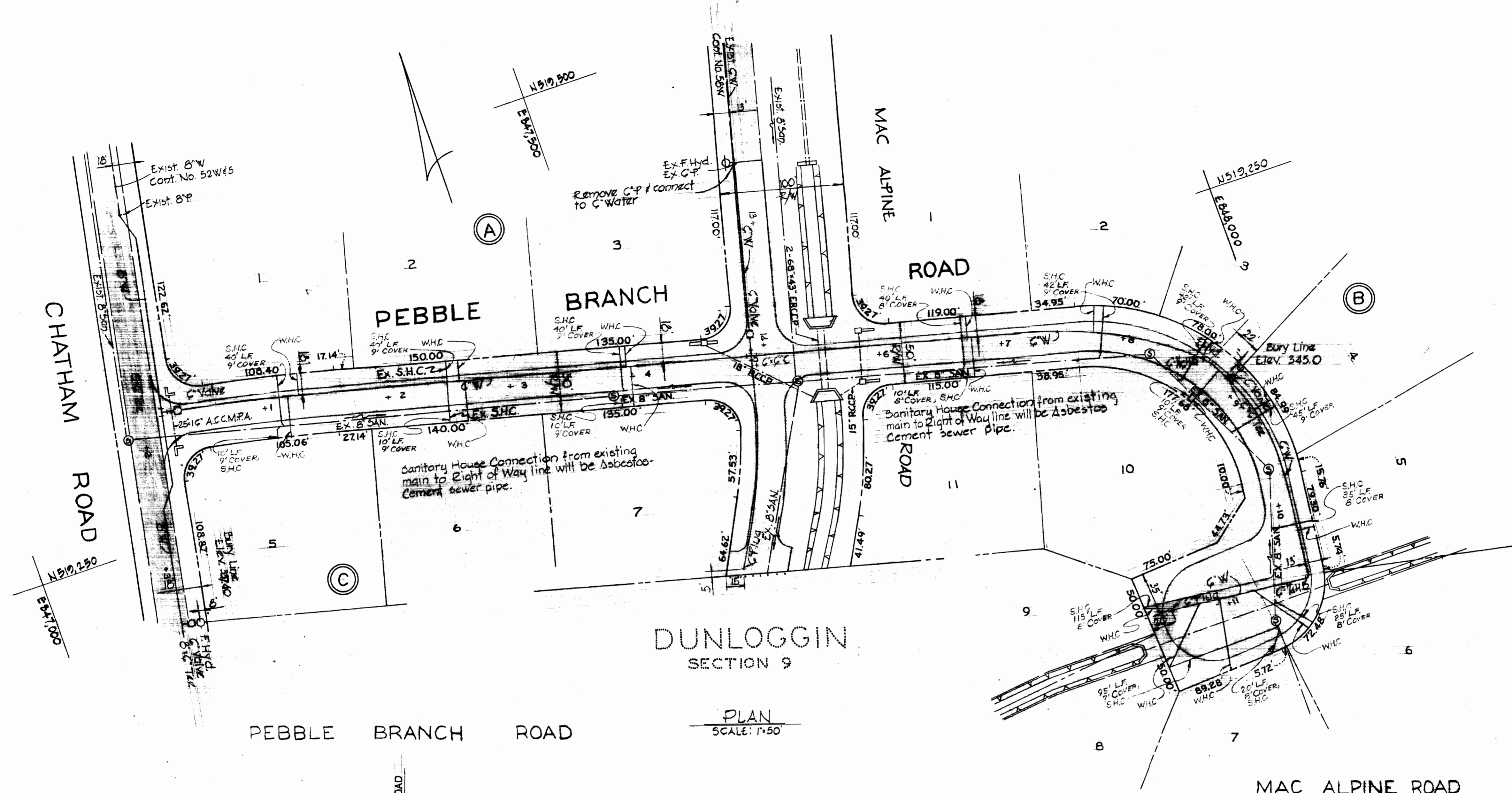
DEPARTMENT OF PUBLIC WORKS
 HOWARD COUNTY, MARYLAND
 3-14-72 DATE
 W. O. Gilbert
 CHIEF - BUREAU OF WATER AND SEWER

CONTRACT NO. 471 D W & S

PLAN AND PROFILE OF
 WATER AND SEWER MAINS

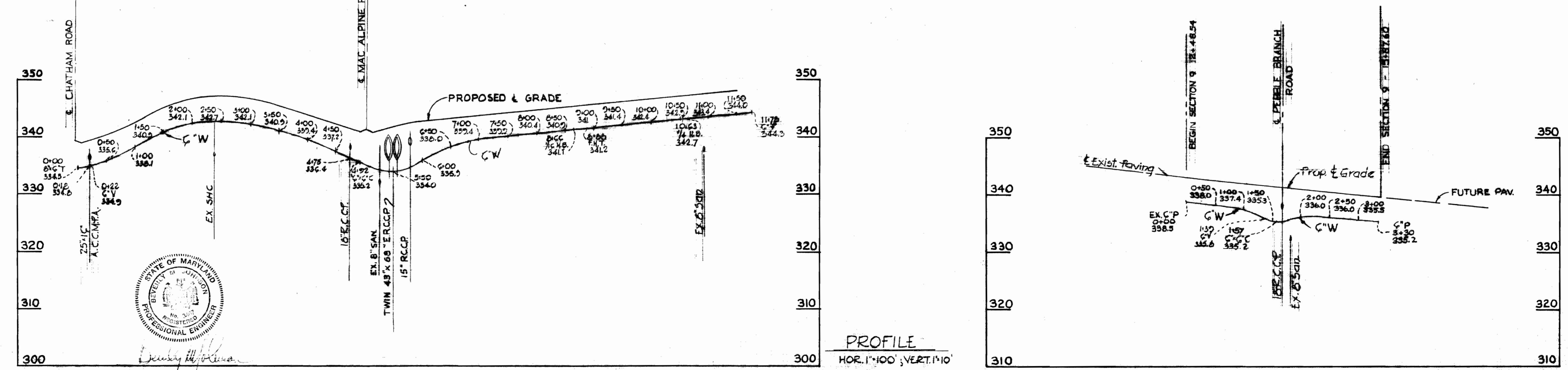
DUNLOGGIN, SECTION NO. 9
 ELECTION DISTRICT NO. 2

DRAWING NO. 1 OF 2
 SCALE As Shown



DUNLOGGIN SECTION 9

PLAN SCALE: 1"=50'



PROFILE HOR. 1"=100' VERT. 1"=10'

PURDUM & JESCHKE
ENGINEERS
1023 N. CALVERT ST.
BALTIMORE, MARYLAND

DEPARTMENT OF PUBLIC WORKS
HOWARD COUNTY, MARYLAND
DATE 3-14-72
W. O. FULTON
CHIEF - BUREAU OF WATER AND SEWER

CONTRACT NO. 471 D W&S

PLAN AND PROFILE OF
WATER AND SEWER MAINS

DUNLOGGIN SECTION NO. 9
ELECTION DISTRICT NO. 2

DRAWING NO. 2 OF 2 SCALE As Shown

AS-BUILT FEB 21, 1973

WS 471 W&S/2