

VICINITY MAP
Scale: 1" = 1200'

GENERAL NOTES

1. Approximate location of existing mains are shown. The Contractor shall take all necessary precautions to protect existing mains and services and maintain uninterrupted supply. Any damage incurred shall be repaired immediately.
2. All pipe elevations shown are invert elevations.
3. The Contractor shall locate existing utilities a minimum of two weeks in advance of construction operation in vicinity of utilities.
4. For all standard details see standards bound in Specifications.
5. Clear all utilities by a minimum of 6', clear all poles by 2'-0" or tunnel as required.
6. All water mains to have a minimum of 3 1/2' cover unless otherwise noted.
7. Block all fittings with concrete, see standards bound in Specifications.
8. Bury line elevation on fire hydrants shall be set to the elevations shown on the drawings.
9. All fire hydrants shall be strapped to the tee and shall be buttressed with concrete in accordance with standard details.
10. All horizontal and vertical controls are based on Maryland State Datum.

STAKEOUT and DIARY in FB# 5158
A.C.P. used for Water Mains
M & H Fire Hydrants used

QUANTITIES	
8" Water	835'
6" Water	835'
Fire Hydrants	2



Kenneth A. McCord

Allenford
Section N° G
Contract N° 459-W

DRAWING NO. 1 OF 2	SCALE	537-480
	AS SHOWN	538-480
		539-480

DEC. 13, 1972 AS BUILT

W.R. & A. B.M.#7 Elev. 451.46
□ Cut & Top steel Curb
⊙ Inlet S.W. Corner Green
Clover Dr. & Beth Court.

WHITMAN, REQUARDT & ASSOCIATES
ENGINEERS
1304 ST. PAUL ST.
BALTIMORE, MARYLAND

DEPARTMENT OF PUBLIC WORKS
HOWARD COUNTY, MARYLAND
2-21-72
W.O. Gilbert
CHIEF - BUREAU OF WATER AND SEWER

CONTRACT NO. 459-W

PLAN OF
WATER MAINS

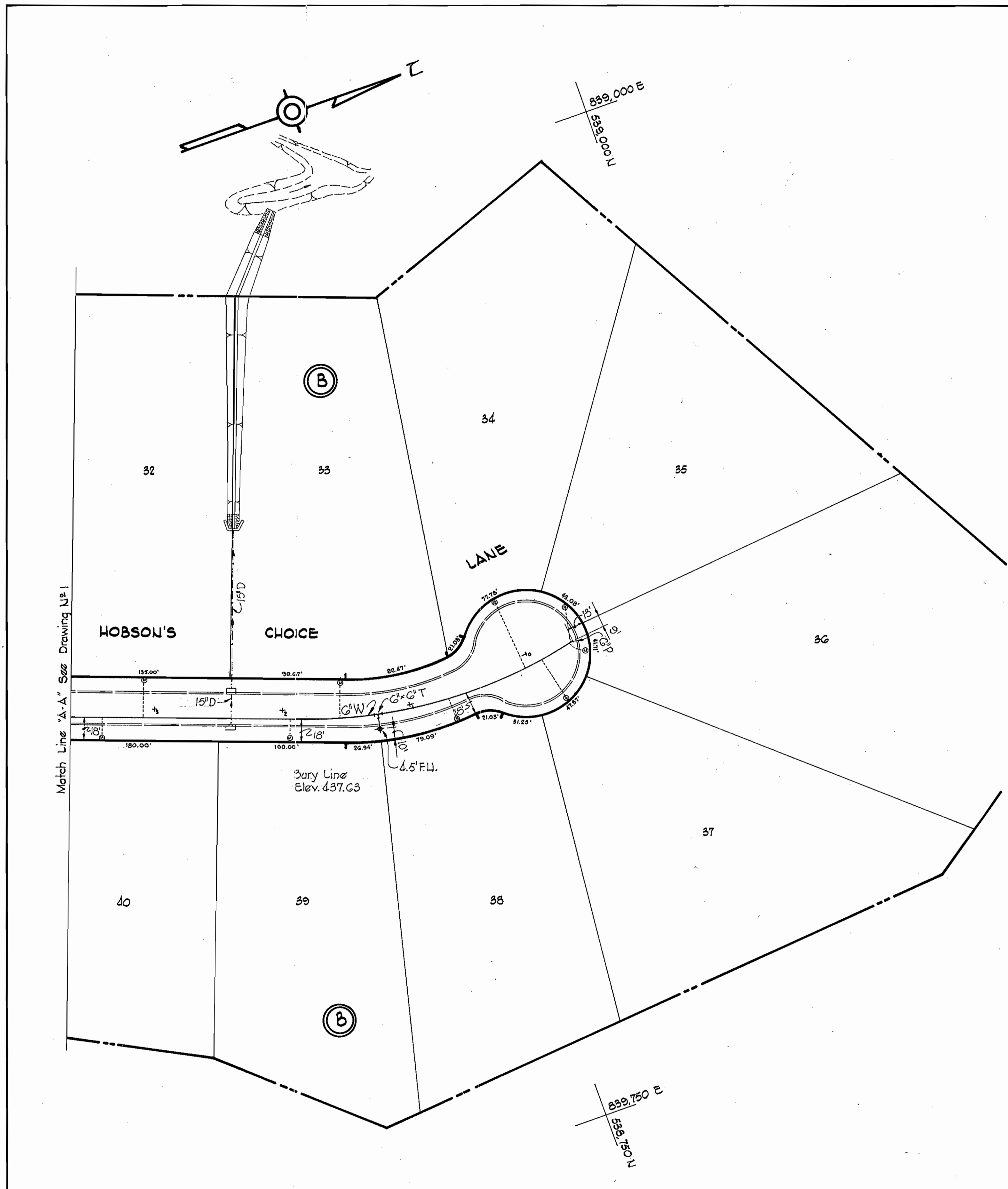
ELECTION DISTRICT
ELLICOTT CITY NO. 2

W. O. G024-2

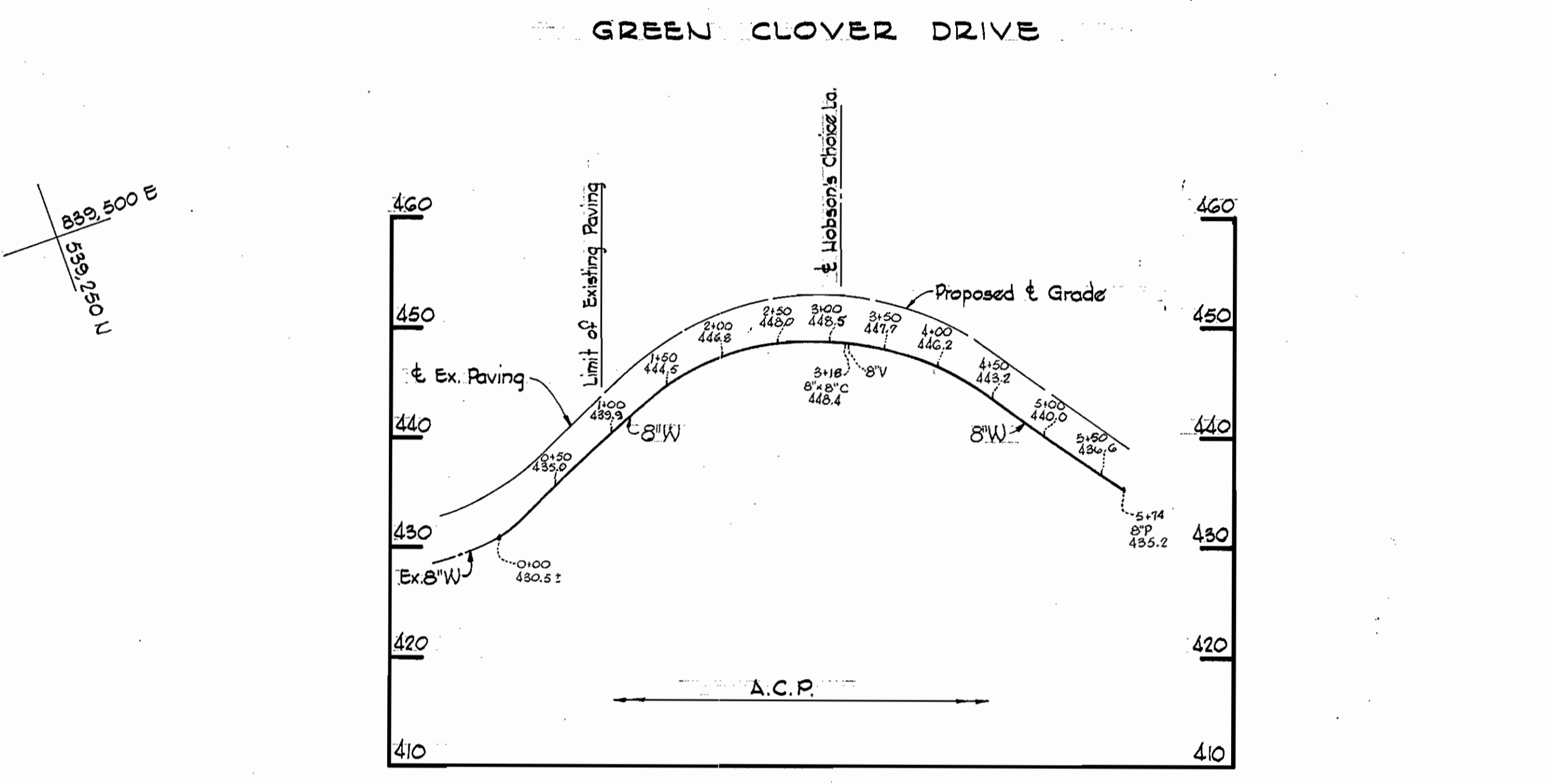
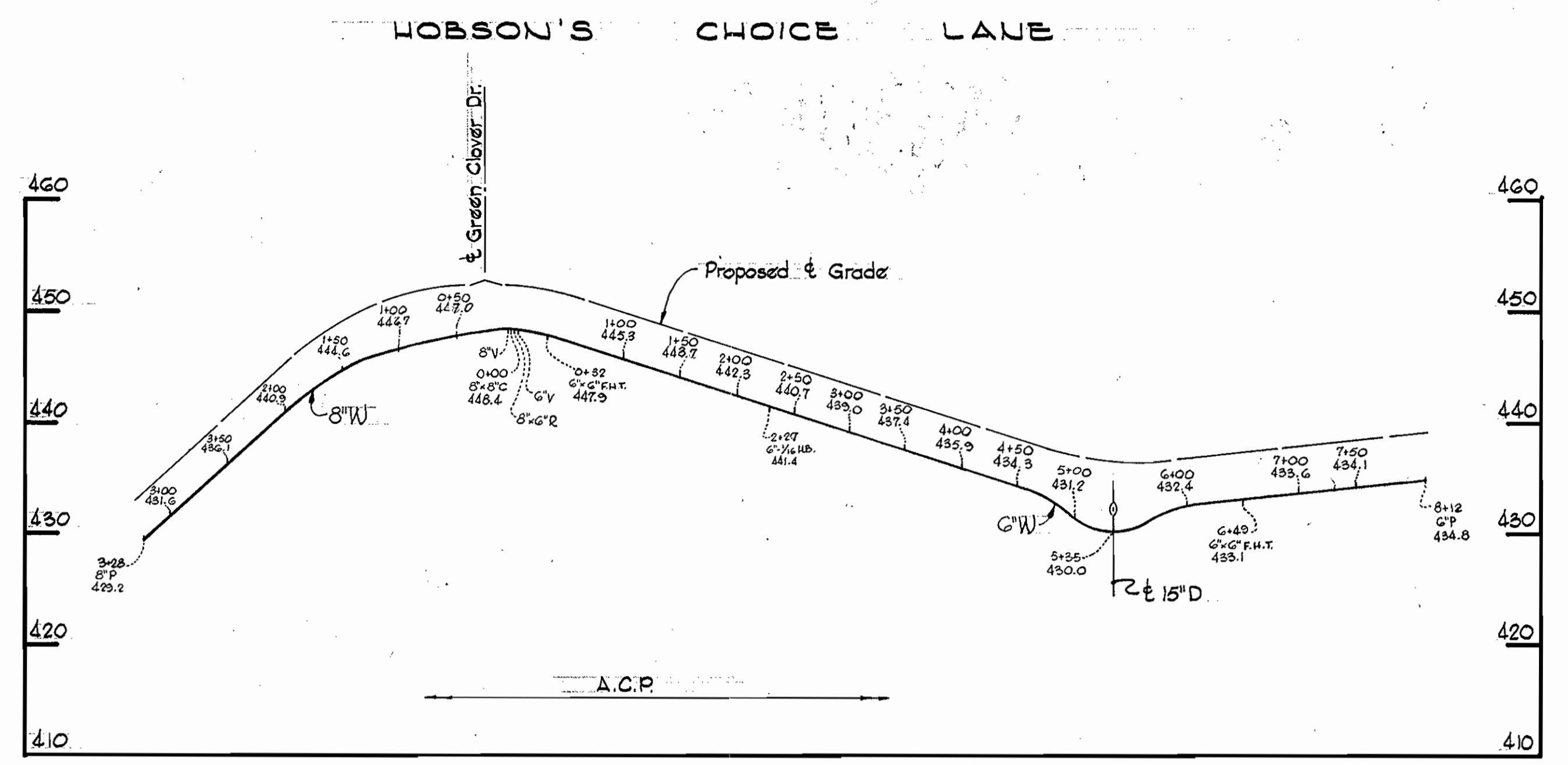
WS 459-W/1

DATE PLOTTED: 12/13/72

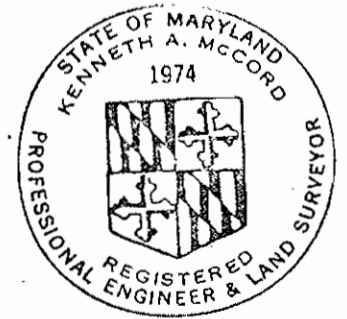
DATE PLOTTED: 12/13/72



PLAN
Scale: 1" = 50'



PROFILE
Scale: Horz. 1" = 100'
Vert. 1" = 10'



Kenneth A. McCord

Allenford
Section N# G
Contract N# 459-W

WHITMAN, REQUARDT & ASSOCIATES ENGINEERS 1304 ST. PAUL ST. BALTIMORE, MARYLAND	DEPARTMENT OF PUBLIC WORKS HOWARD COUNTY, MARYLAND DATE: 12/13/72 CHIEF - BUREAU OF WATER AND SEWER	CONTRACT NO. 459-W	PLAN AND PROFILE OF WATER MAINS	ELECTION DISTRICT ELLICOTT CITY NO. 2	DRAWING NO. 2 OF 2 SCALE AS SHOWN 538-480 539-480
---	--	--------------------	------------------------------------	--	--

W. O. 6024-2

DEC 13 1972 AS BUILT

WS 459-W/2

DRAWING 44-510 14778