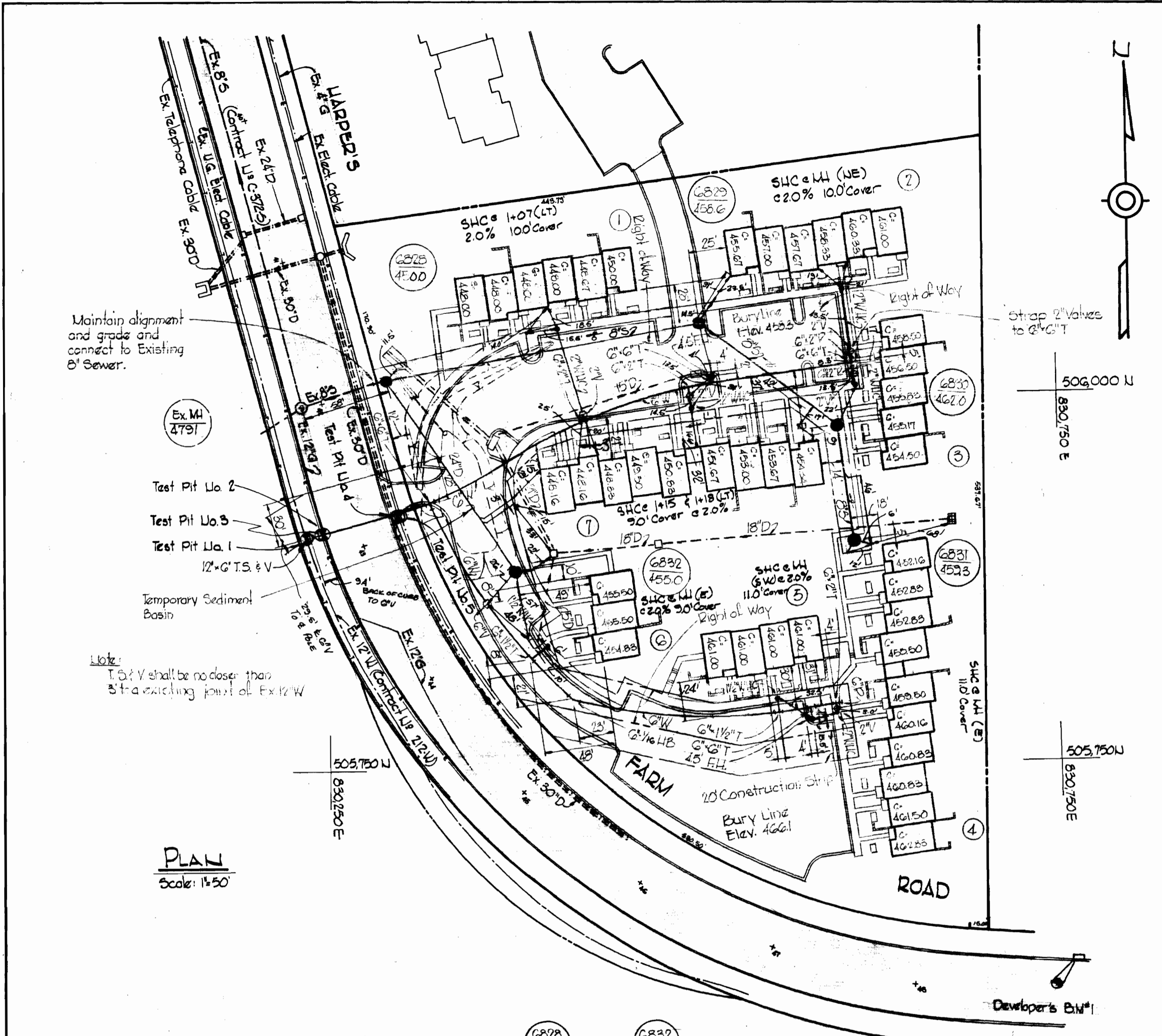


WS 455-W&S/

SUSPENSE

SUSPENSE

W. O. 44510 1478



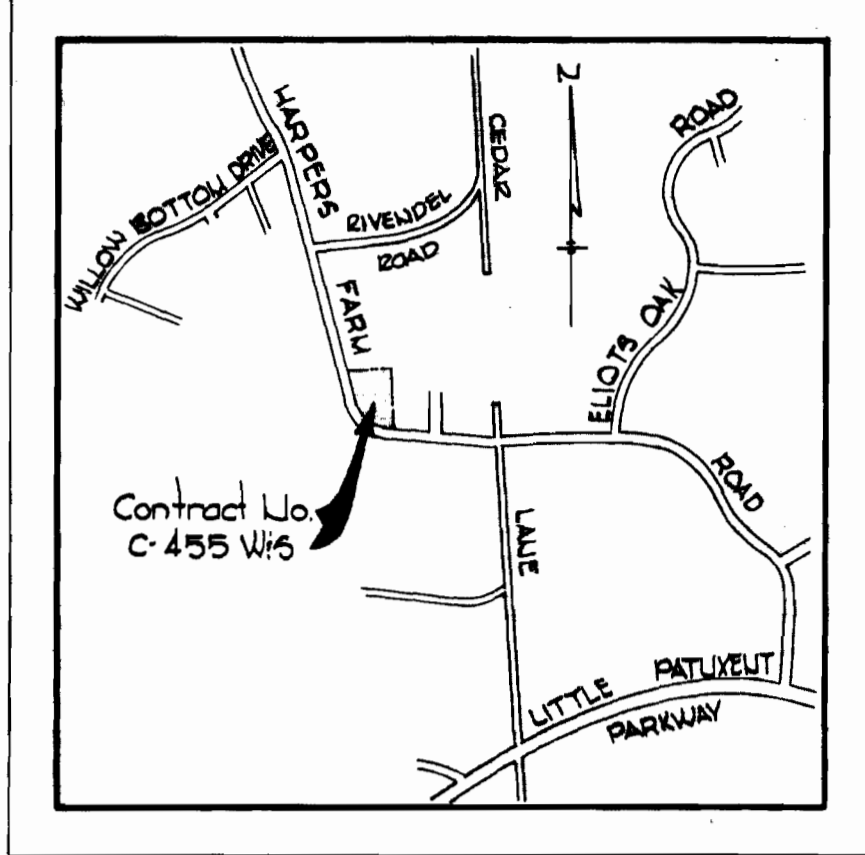
Maintain alignment and grade and connect to Existing 8" Sewer.

Note: T.D.V shall be no closer than 3' to existing joint of Ex. 12' W.

PLAN Scale: 1/4" = 1'-0"

W.R.#A. BM# Dan Elev. 454.089
 RR Spike in base of G' Maple,
 2,000' South of Intersection Harper's
 Farm Rd. & Willow Bottom Dr. Mark
 with Guard.
 Developer's BM#1 Elev. 474.10
 Corner of Inlet, Harper's Farm
 Road.

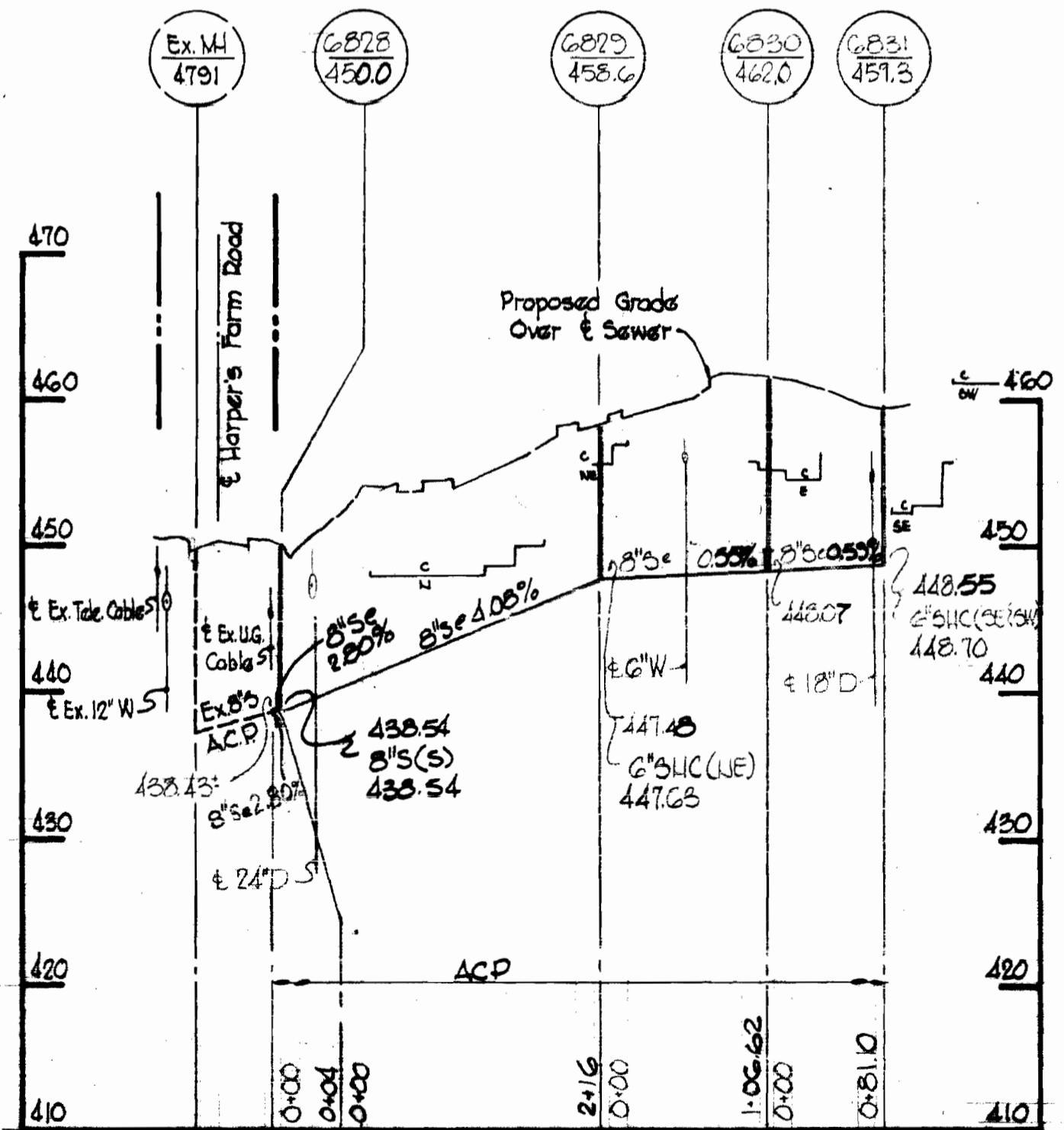
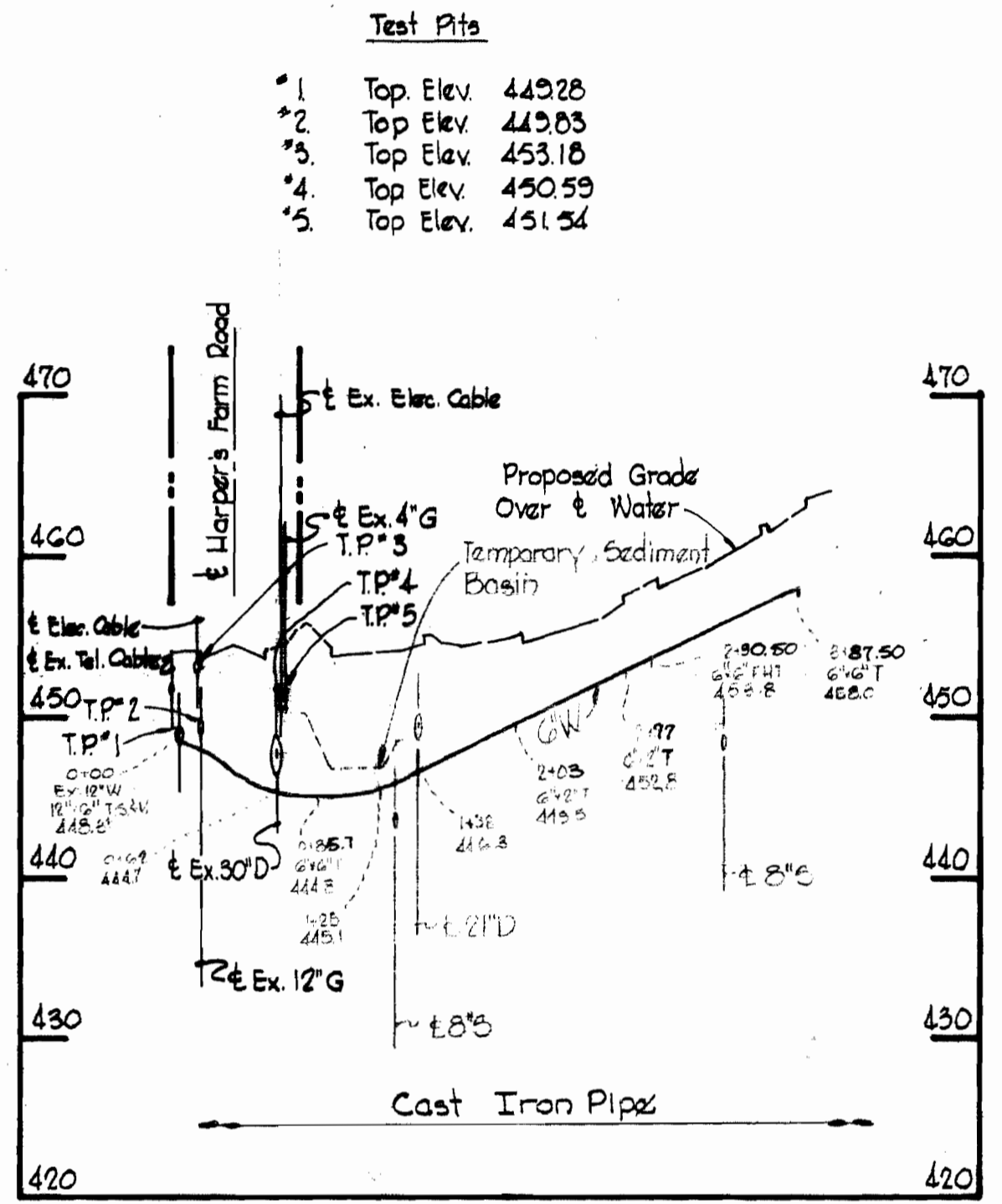
QUANTITIES	
8" Sewer	570 LF
6" Water	750 LF
Fire Hydrants	2



VICINITY MAP Scale: 1/4" = 1'-0"

GENERAL NOTES

1. Approximate location of existing mains are shown. The Contractor shall take all necessary precautions to protect existing mains and services and maintain uninterrupted supply. Any damage incurred shall be repaired immediately.
2. All pipe elevations shown are invert elevations.
3. The Contractor shall locate existing utilities a minimum of two weeks in advance of construction operations in vicinity of utilities.
4. For all standard details see standards bound in Specifications.
5. Clear all utilities by a minimum of 6' clear all poles by 2'-0" minimum or tunnel as required.
6. All horizontal and vertical controls are based on Maryland State Datum.
7. The Contractor shall provide a joint in all sewer mains within 2'-0" of exterior manhole walls.
8. All manholes shall be 4'-0" inside diameter.
9. All water mains to have a minimum of 3/8" cover unless otherwise noted.
10. Block all fittings with concrete, see standards bound in specification.
11. Bury Line elevations on fire hydrants shall be set to the elevations shown on the drawing.
12. All fire hydrants shall be strapped and shall be buttressed with concrete in accordance with standard details.



PROFILES Scale: Horiz. 1" = 100' Vert. 1" = 10'



Kenneth A. McCord

Village of Harper's Choice
 Lot A-2
 Section 5, Area 3
 Contract No. C-455 W&S
 Stakeout and Diary FB# 5485

WHITMAN, REQUARDT & ASSOCIATES ENGINEERS 1304 ST. PAUL ST. BALTIMORE, MARYLAND	DEPARTMENT OF PUBLIC WORKS HOWARD COUNTY, MARYLAND 8-10-73 DATE	CONTRACT NO. C-455 W&S	PLAN AND PROFILES OF WATER & SEWER MAINS	COLUMBIA VILLAGE OF HARPER'S CHOICE ELECTION DISTRICT CLARKSVILLE NO.5	DRAWING NO. 1 OF 1	SCALE AS SHOWN	505-475 506-475
					W. O. G023-2		