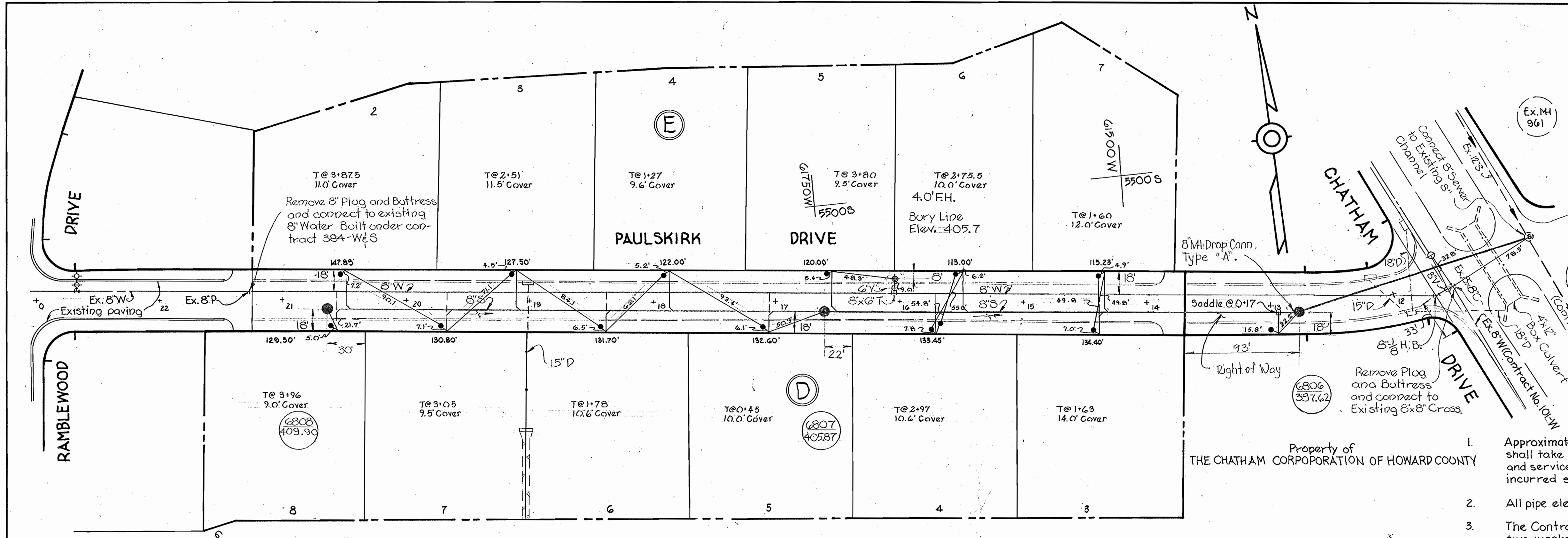


VICINITY MAP
Scale 1"=1,200'

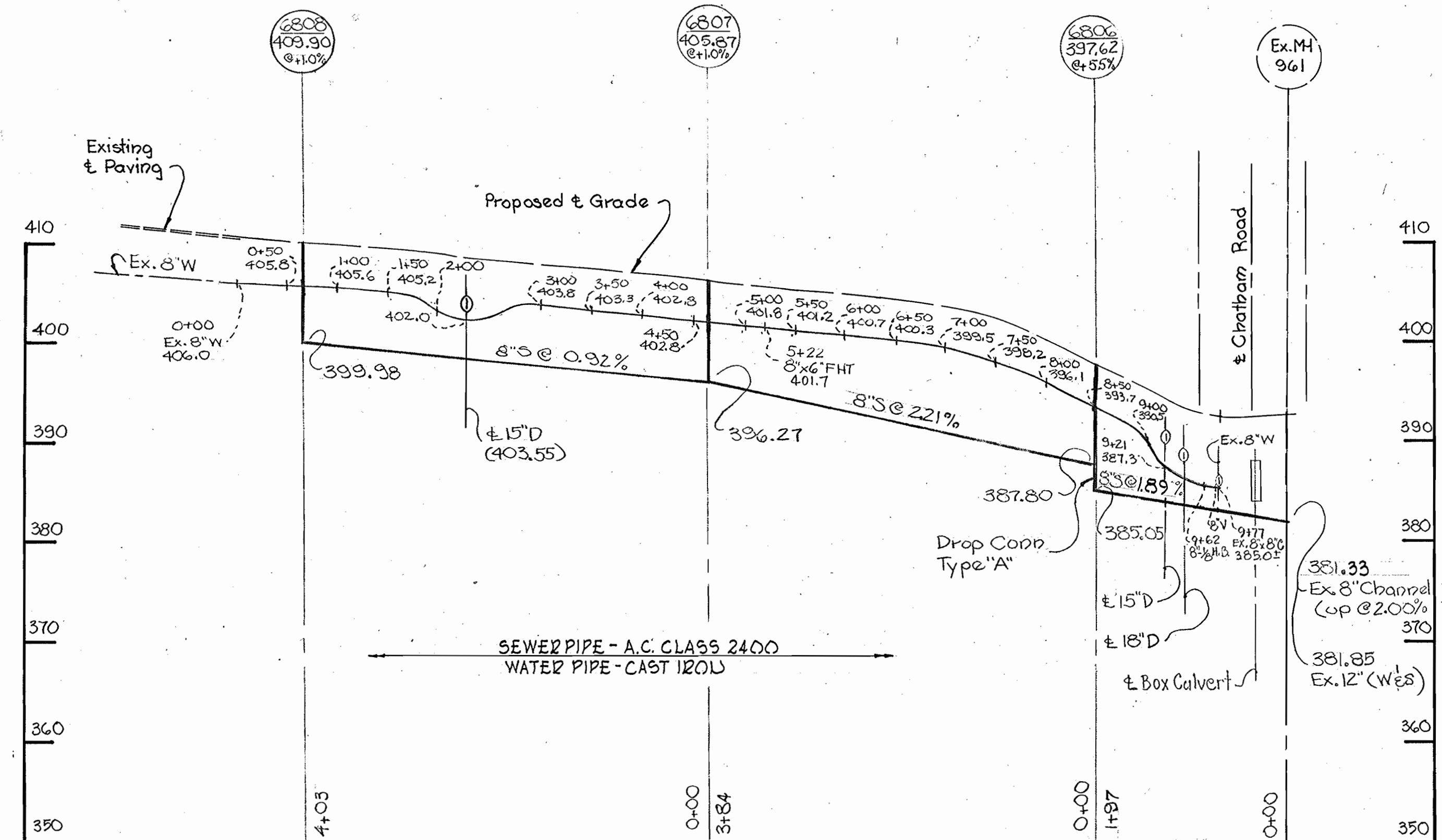
GENERAL NOTES

1. Approximate location of existing mains are shown. The Contractor shall take all necessary precautions to protect existing mains and services and maintain uninterrupted supply. Any damage incurred shall be repaired immediately.
2. All pipe elevations shown are invert elevations.
3. The Contractor shall locate existing utilities a minimum of two weeks in advance of construction operations in vicinity of utilities.
4. For all standard details see standards bound in Specifications.
5. Clear all utilities by a minimum of 6'; clear all poles by 2'-0" of minimum or tunnel as required.
6. All horizontal and vertical controls are based on Howard County Datum.
7. The Contractor shall provide a joint in all sewer mains within 2'-0" of exterior manhole walls.
8. All manholes shall be 4'-0" inside diameter.
9. All water mains to have a minimum of 3 1/2' cover unless otherwise noted.
10. Block all fittings with concrete, see standards bound in Specifications.
11. Bury Line elevations on fire hydrants shall be set to the elevations shown on the drawing.
12. All fire hydrants shall be strapped to the tee and shall be buttressed with concrete in accordance with standard details.



PLAN
Scale: 1"=50'

QUANTITIES	
8" Sewer	985'
8" Water	980'
6" Water	15'
Fire Hydrants	1



PROFILE
Scale: Horiz. 1"=100'
Vert. 1"=10'

AS BUILT
STAKEOUT # DIARY 113 FB # 4886
SNC - ACP
Chatham, Section 14
Contract No. 443-W&S

WHITMAN, REQUARDT & ASSOCIATES ENGINEERS 1304 ST. PAUL ST. BALTIMORE, MARYLAND	DEPARTMENT OF PUBLIC WORKS HOWARD COUNTY, MARYLAND 8-9-71 DATE	W. O. Lubert CHIEF - BUREAU OF WATER AND SEWER	CONTRACT NO. 443-W&S	PLAN AND PROFILE OF WATER & SEWER MAINS	ELECTION DISTRICT ELLICOTT CITY NO. 2	DRAWING NO. 1 OF 1	SCALE AS SHOWN	6 SW 41 6 SW 42
						W. O. 6024-2		

WS 443-W&S/1

BRUNING 44-510 14778