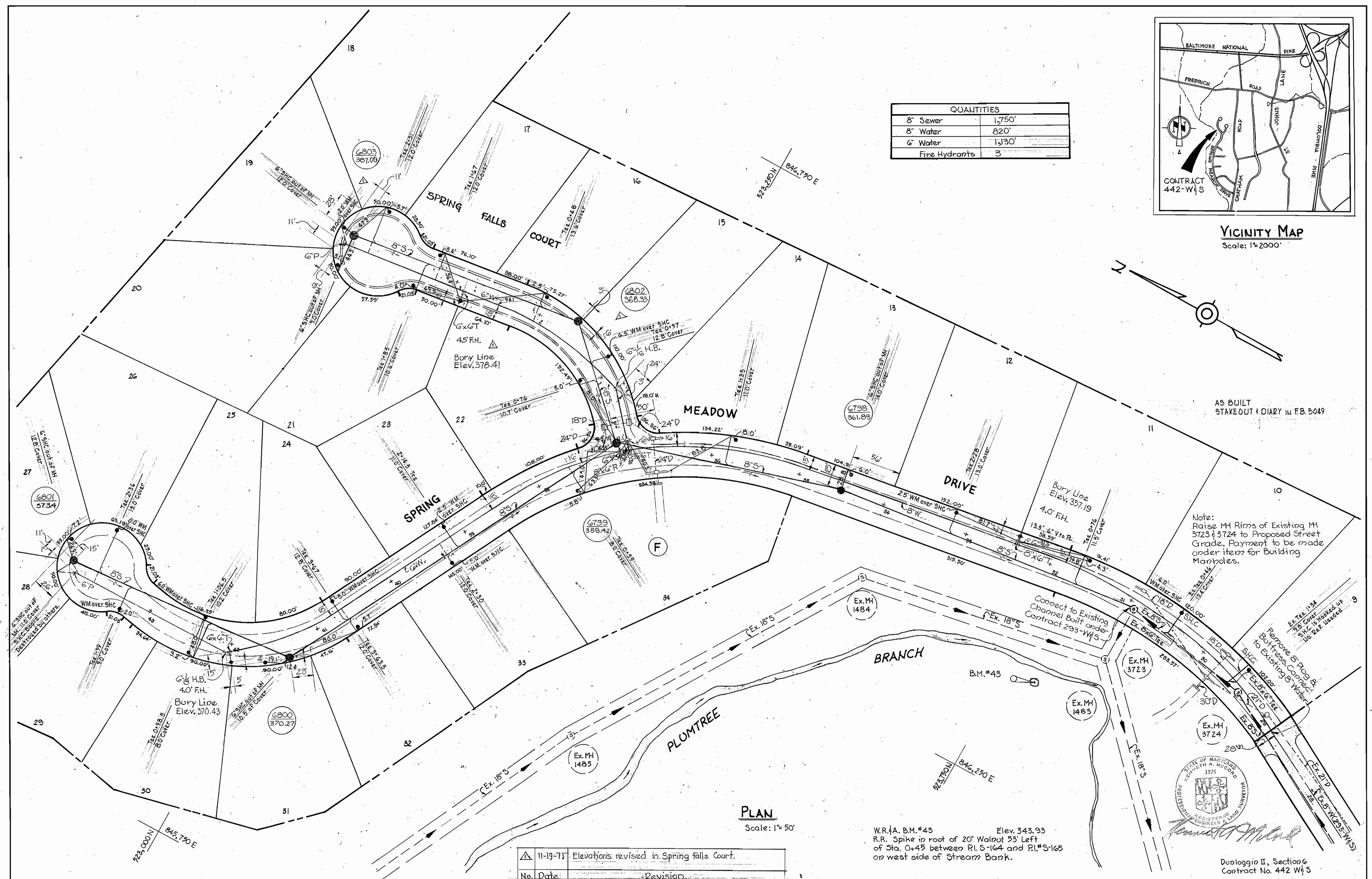


VICINITY MAP
Scale: 1"=2000'

QUANTITIES	
8" Sewer	1,750'
8" Water	820'
6" Water	1,130'
Fire Hydrants	3

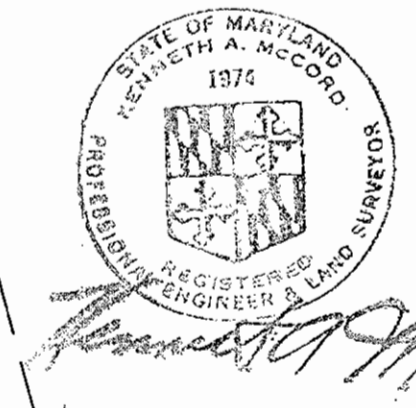


Note: Raise MH Rims of Existing MH 3723 & 3724 to Proposed Street Grade. Payment to be made under item for Building Manholes.

PLAN
Scale: 1"=50'

No.	Date	Revision
1	11-19-71	Elevations revised in Spring falls Court.

W.R.A. B.M.#43 Elev. 343.93
R.R. Spike in root of 20' Walnut 53' Left
of Sta. 0+45 between P.I.S-164 and P.I.S-165
on west side of Stream Bank.



Duplicating II, Section 6
Contract No. 442 W&S

WHITMAN, REQUARDT & ASSOCIATES
ENGINEERS
1304 ST. PAUL ST.
BALTIMORE, MARYLAND

DEPARTMENT OF PUBLIC WORKS
HOWARD COUNTY, MARYLAND
8-9-71
W. O. Falbert
CHIEF - BUREAU OF WATER AND SEWER

CONTRACT NO. 442-W&S

PLAN OF
WATER & SEWER MAINS

ELECTION DISTRICT
ELlicott City No. 2

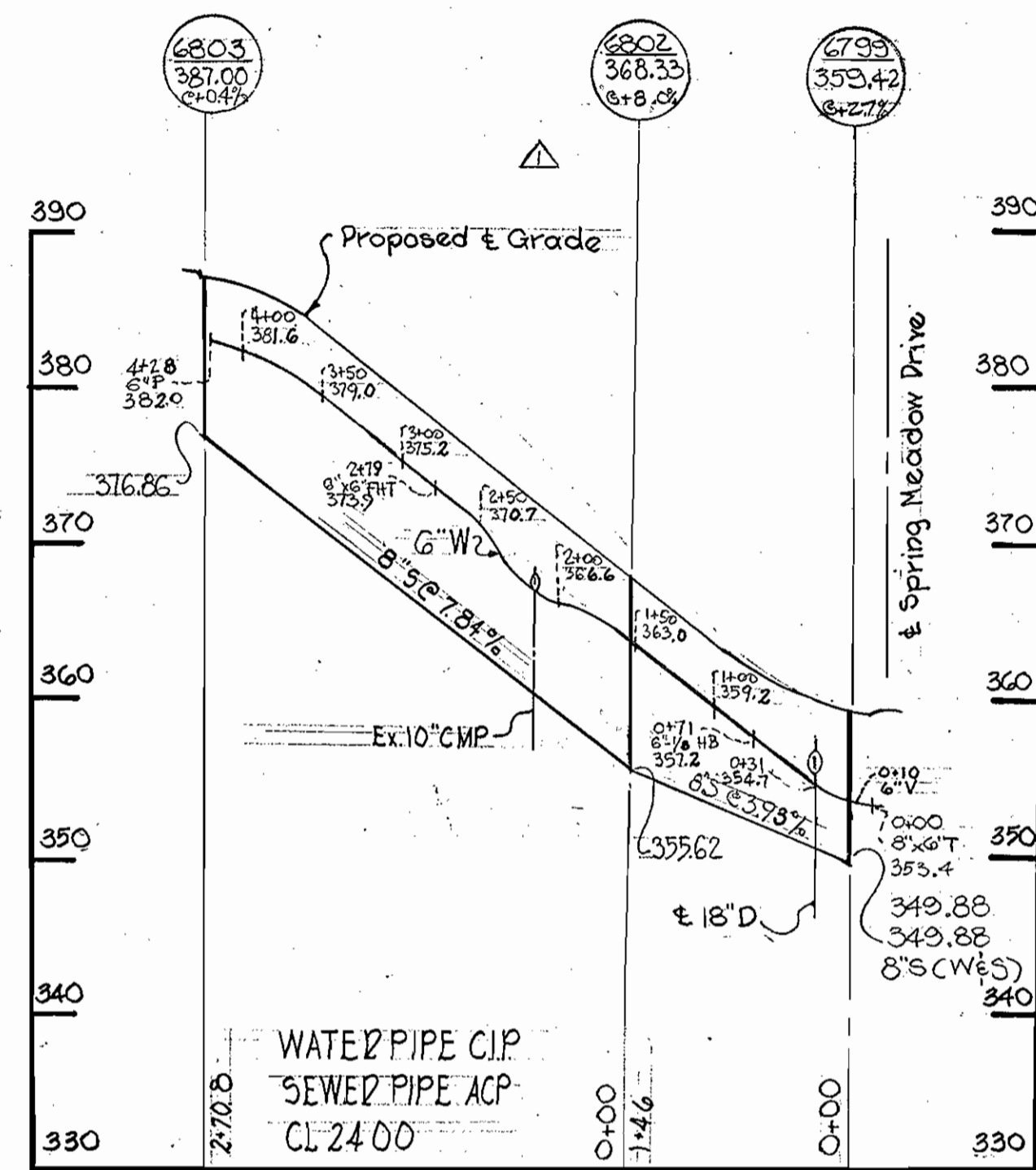
DRAWING NO.	SCALE	DATE
NO. 1 OF 2	AS SHOWN	22 MAY 72

WS 442-W&S/1

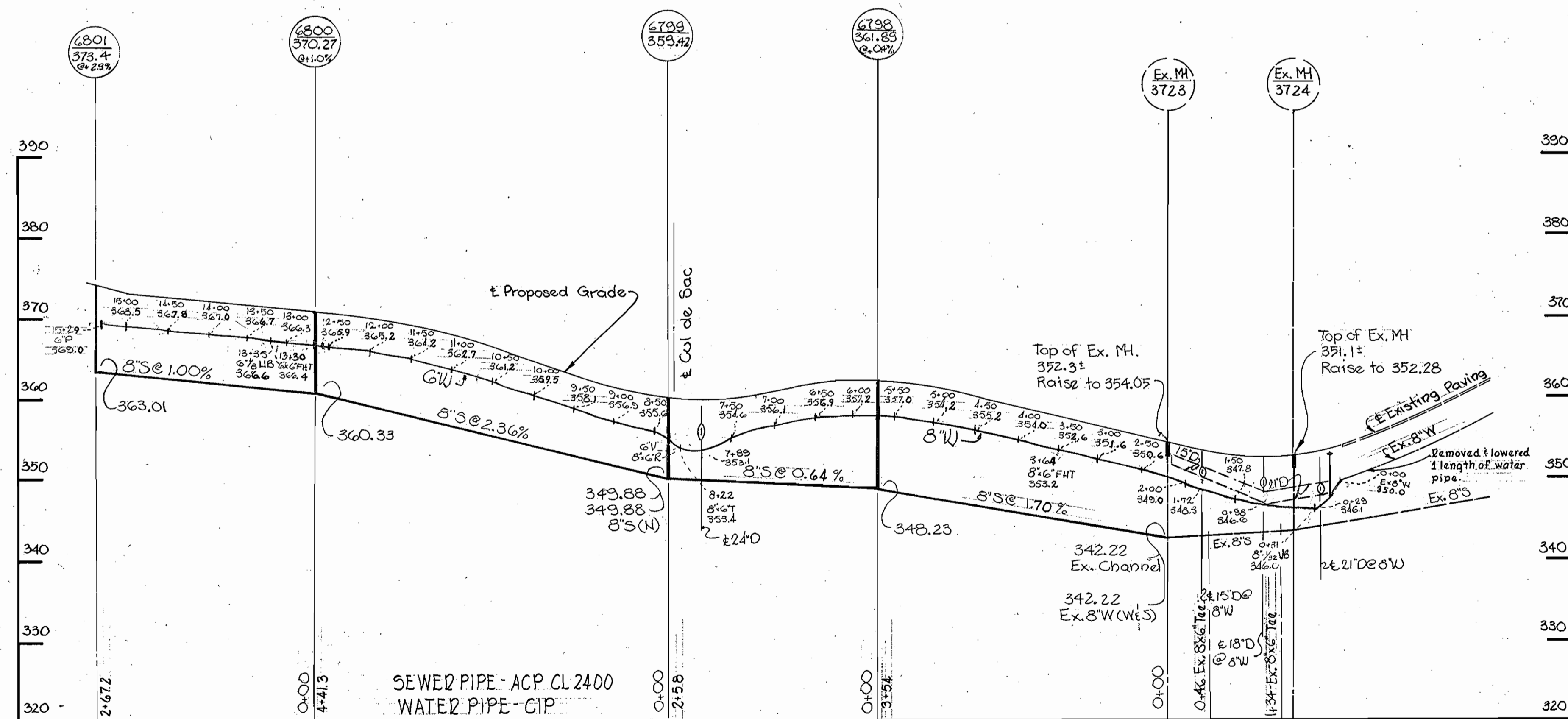
W. O. 6024-2

AS BUILT

SPRING FALLS COURT



SPRING MEADOW DRIVE



AS BUILT NOTE: 4-12-72
 A.P. Smith F.H. set on SPRING FALLS COURT.
 The 2 F.H.'s on SPRING MEADOW DRIVE will be set when contractor gets delivery of F.H.'s.
 Remaining F.H.'s set 5/2/72



Harold M. Smith

△	11-19-71	Water and Sewer Revised in Spring Falls Court.
No.	Date	Revision

DuPage II, Section 6
 Contract No. 442 W&S

WHITMAN, REQUARDT & ASSOCIATES
 ENGINEERS
 1304 ST. PAUL ST.
 BALTIMORE, MARYLAND

DEPARTMENT OF PUBLIC WORKS
 HOWARD COUNTY, MARYLAND

8-9-71
 DATE

W.O. Gilbert
 CHIEF - BUREAU OF WATER AND SEWER

CONTRACT NO. 442-W&S

PROFILE OF
 WATER & SEWER MAINS

ELECTION DISTRICT
 ELLICOTT CITY NO. 2

DRAWING NO. 2 OF 2
 SCALE H-1"=100' V-1"=10'

W. O. 6024-2

22 MAY 72 AS BUILT

WS 442-W&S/2

BRUNING 44-510 11778