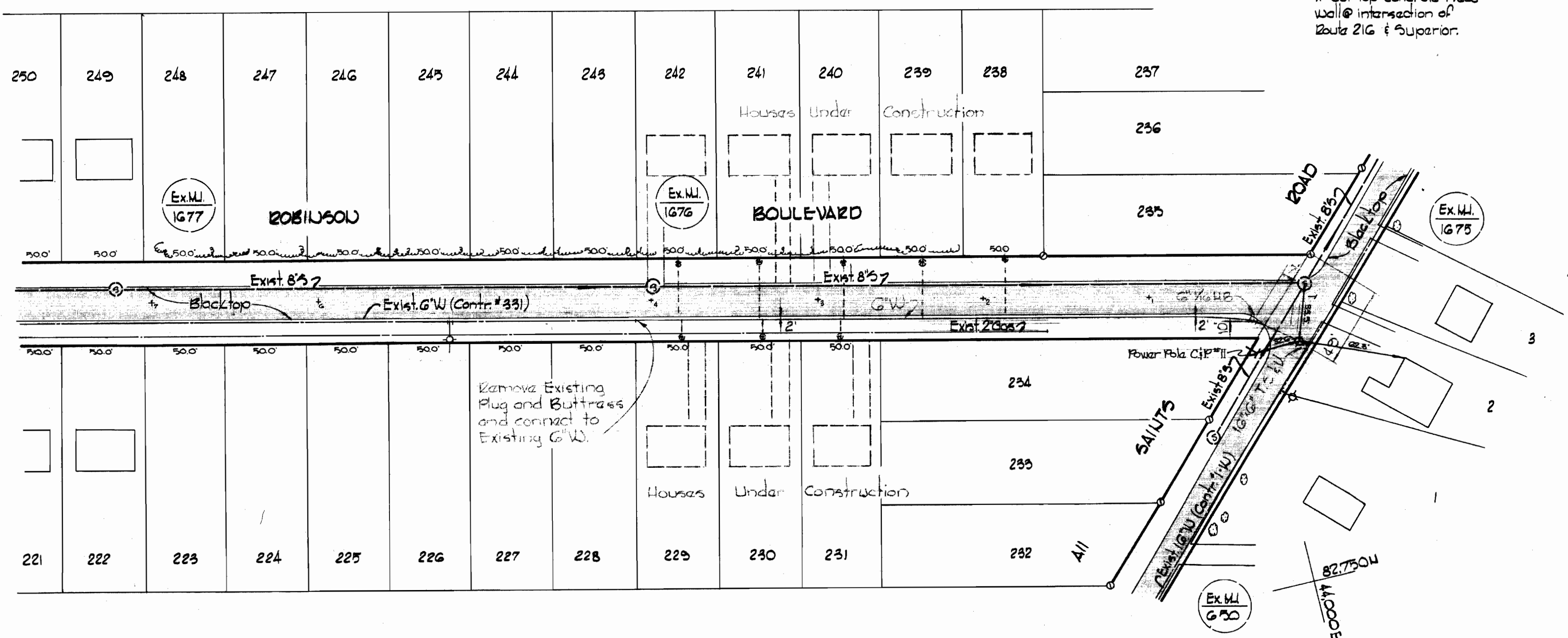
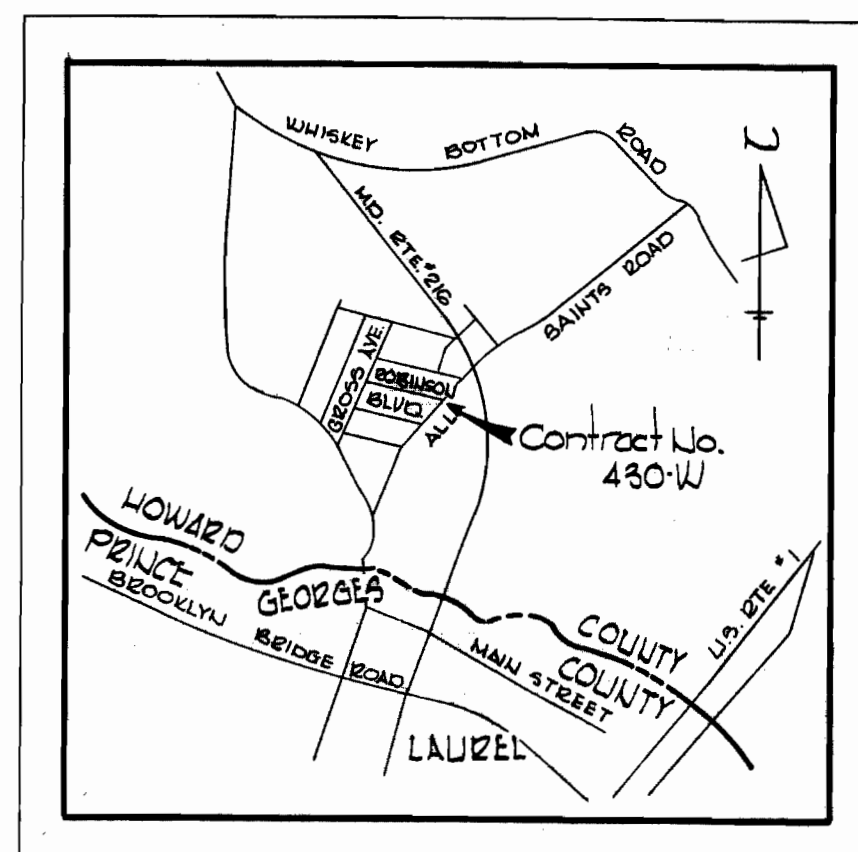
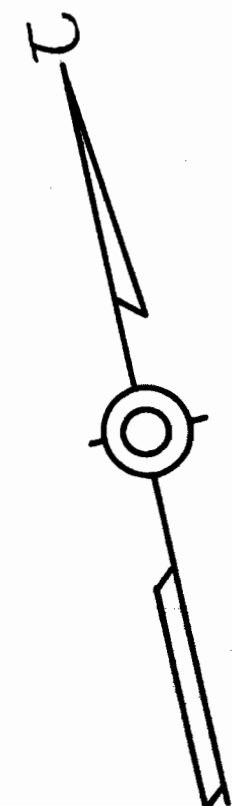


83.250W  
43.500E



W.I. #4 T.B.L. #4 Elev. 206.27  
X' cut top concrete head-wall @ intersection of Route 216 & Superior.



VICINITY MAP  
Scale: 1 1/2 miles

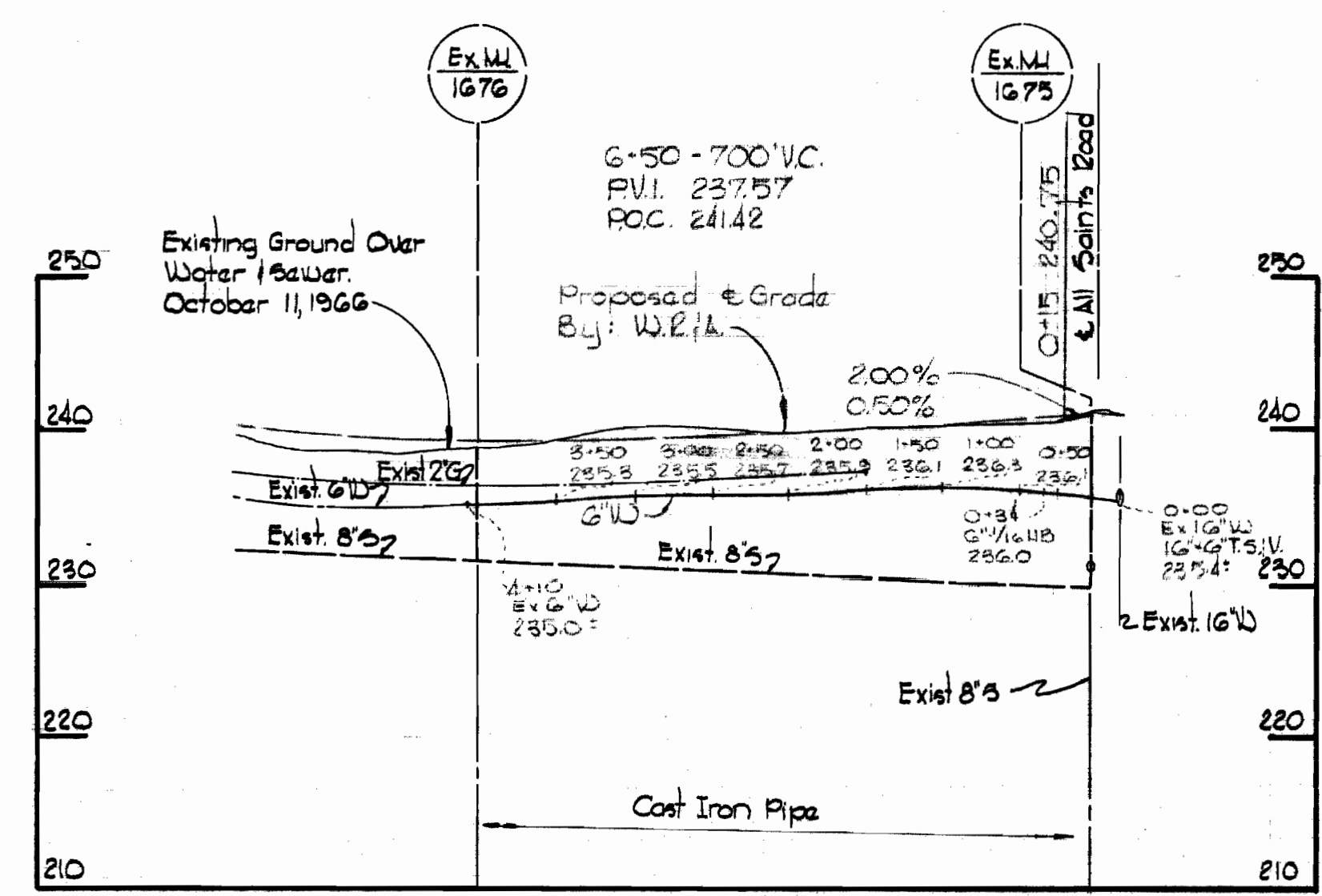
**GENERAL NOTES**

1. Approximate location of existing mains are shown. The Contractor shall take all necessary precautions to protect existing mains and services and maintain uninterrupted supply. Any damage incurred shall be repaired immediately.
2. All pipe elevations shown are invert elevations.
3. The Contractor shall locate existing utilities a minimum of two weeks in advance of construction operations in vicinity of utilities.
4. For all standard details see standards bound in Specifications.
5. All horizontal and vertical controls are based on Howard County Datum.
6. Clear all utilities by a minimum of 6'; clear all poles by 2'0" minimum or tunnel as required.
7. All water mains to have a minimum of 3 1/2' cover unless otherwise noted.
8. Block all fittings with concrete, see standards bound in Specifications.

**PLAN**  
Scale: 1" = 50'

82.750N  
43.500E

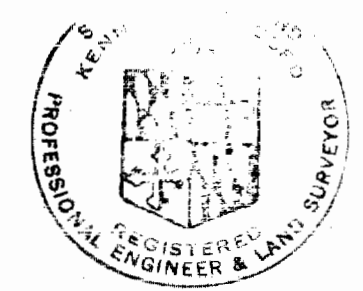
**ROBINSON BOULEVARD**



**PROFILE**  
Scale: Horiz. 1" = 100'  
Vert. 1" = 10'

QUANTITIES	
G' Water	410'

Takeout and Diary in F.B. # 430



*Kenneth A. Meland*

Robinson Boulevard  
Contract No. 430-W

<b>WHITMAN, REQUARDT &amp; ASSOCIATES</b> ENGINEERS 1304 ST. PAUL ST. BALTIMORE, MARYLAND	<b>DEPARTMENT OF PUBLIC WORKS</b> HOWARD COUNTY, MARYLAND DATE: 5-4-71 <i>W O Pellert</i> CHIEF-BUREAU OF WATER AND SEWER	<b>CONTRACT NO. 430 W</b>	<b>PLAN AND PROFILE OF WATER MAIN</b>	<b>ELECTION DISTRICT</b> GUILFORD NO. 6	<b>DRAWING NO. 1 OF 1</b>	<b>SCALE AS SHOWN</b>	42 NE 15-1 42 NE 15-2 42 NE 15-3 42 NE 15-4
--	---	---------------------------	---------------------------------------	--	---------------------------	-----------------------	--

W. O. 6024-2

AS BUILT Aug 24, 1971 F.B. 3600