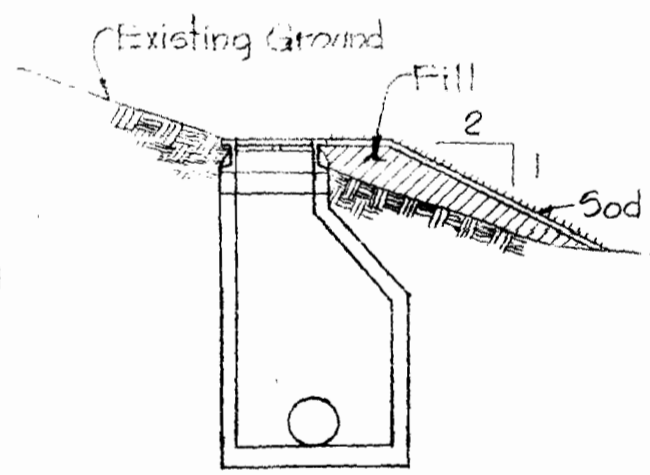


VICINITY MAP
Scale: 1"=2000'

GENERAL NOTES

1. Approximate location of existing mains are shown. The Contractor shall take all necessary precautions to protect existing mains and services and maintain uninterrupted supply. Any damage incurred shall be repaired immediately.
2. All pipe elevations shown are invert elevations.
3. The Contractor shall locate existing utilities a minimum of two weeks in advance of construction operations in vicinity of utilities.
4. For all standard details see standards bound in Specifications.
5. Clear all utilities by a minimum of 6', clear all poles by a 2'-0" minimum, or tunnel as required unless otherwise noted.
6. The Contractor shall provide a joint in all sewer mains within 2'-0" of exterior manhole walls.
7. All manholes shall be 4'-0" inside Diameter.
8. All horizontal and vertical controls are based on Maryland State Datum.
9. Cost of Rip-Rap to be included in unit price bid for furnishing and laying Sewer Mains.



FILL AT MANHOLE 6991
Scale: 1"=5'-0"

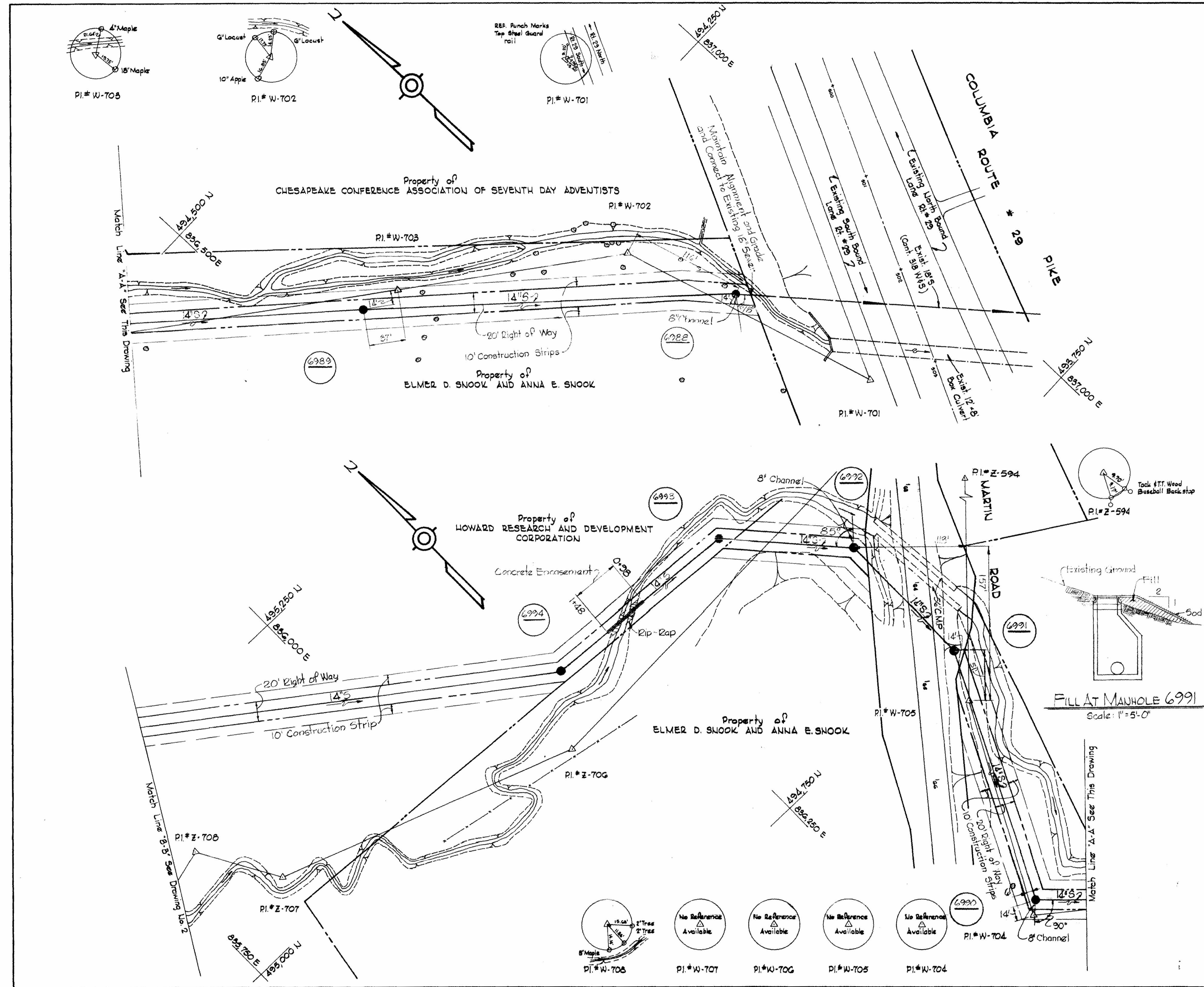
QUANTITIES	
Item	Quantity
18" Sewer	20 LF
15" Sewer	3140 LF
12" Sewer	1750 LF
10" Sewer	1200 LF



Kenneth A. Accord

Stakeout and Diary F.B. 5389

Village of Hickory Ridge
Section Area
Contract No. C-428-5



- PI # W-705: No Reference Available
- PI # W-706: No Reference Available
- PI # W-707: No Reference Available
- PI # W-708: No Reference Available

WHITMAN, REQUARDT & ASSOCIATES
ENGINEERS
1304 ST. PAUL ST.
BALTIMORE, MARYLAND

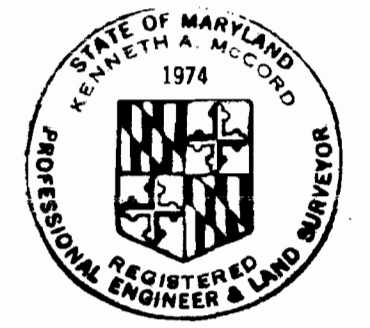
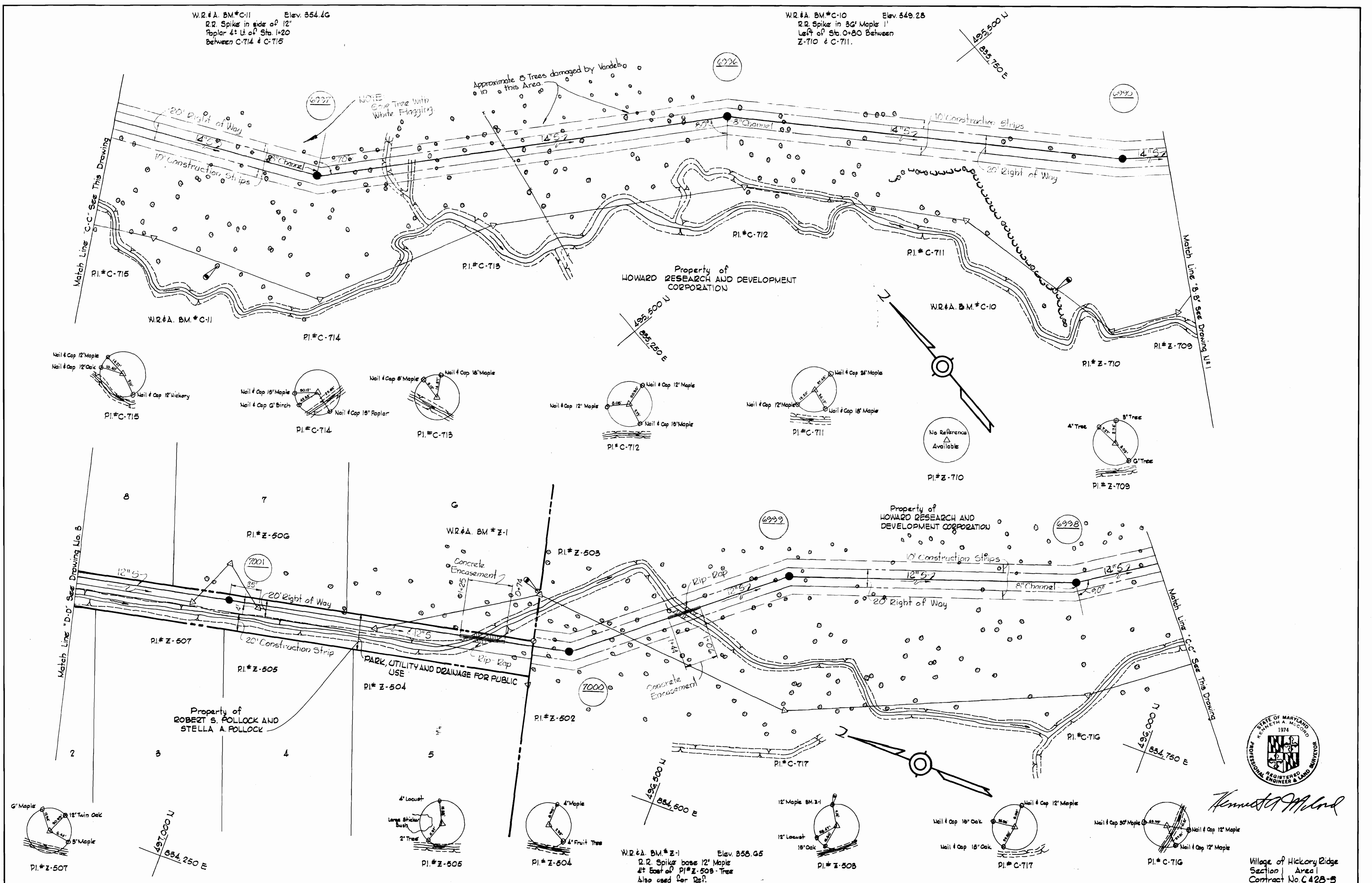
DEPARTMENT OF PUBLIC WORKS
HOWARD COUNTY, MARYLAND
12-12-72
W. O. Palbert
CHIEF - BUREAU OF WATER AND SEWER

CONTRACT NO. C-428-5

PLAN OF SEWER MAINS

COLUMBIA
VILLAGE OF HICKORY RIDGE
ELECTION DISTRICT - CLARKSVILLE - NO. 5

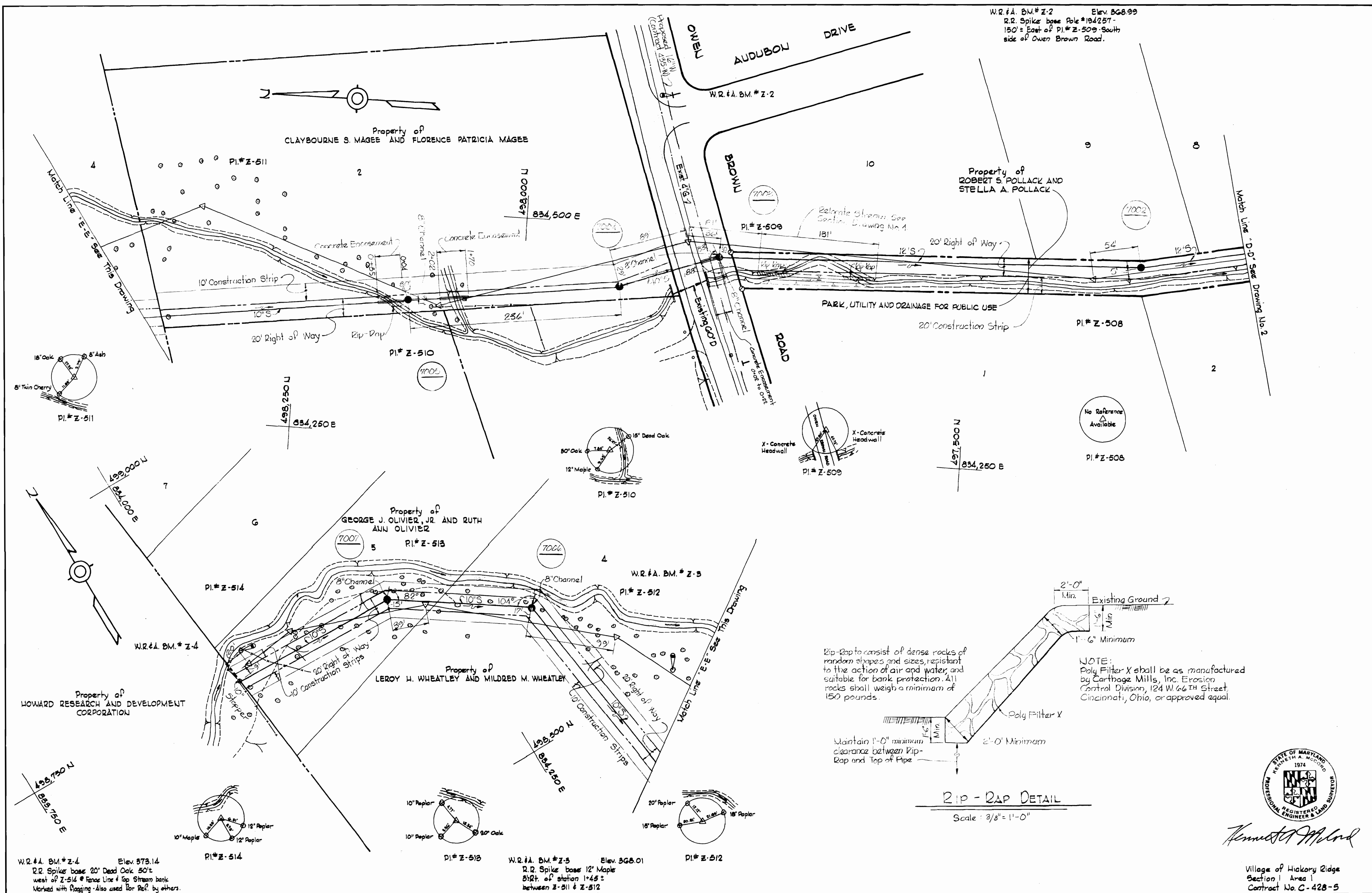
DRAWING NO. 1 OF 4
SCALE 1"=50'



Kenneth A. McCord

Village of Hickory Ridge
Section 1 Area
Contract No. C-428-5

WHITMAN, REQUARDT & ASSOCIATES ENGINEERS 1304 ST. PAUL ST. BALTIMORE, MARYLAND	DEPARTMENT OF PUBLIC WORKS HOWARD COUNTY, MARYLAND 12-12-72 DATE <i>W. O. G. 23-2</i> CHIEF - BUREAU OF WATER AND SEWER	CONTRACT NO. C-428S	PLAN OF SEWER MAINS	COLUMBIA VILLAGE OF HICKORY RIDGE ELECTION DISTRICT - CLARKSVILLE - NO. 5	DRAWING NO. 2 OF 4 SCALE 1"=50' 495-478 496-478 497-477
-----------------------------------------------------------------------------------------	----------------------------------------------------------------------------------------------------------------------------------------	---------------------	------------------------	---------------------------------------------------------------------------------	---------------------------------------------------------------------



W.R.#A. BM.# Z-2 Elev. 568.99
 R.R. Spike base Pole #194257 -
 130' ± East of PI.# Z-509 - South
 side of Owen Brown Road.

Property of
 CLAYBOURNE S. MAGEE AND FLORENCE PATRICIA MAGEE

Property of
 ROBERT S. POLLACK AND
 STELLA A. POLLACK

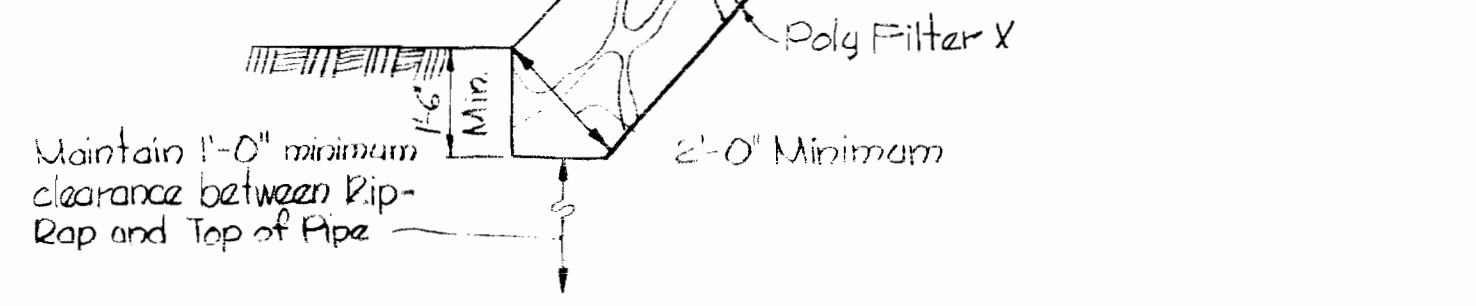
Property of
 GEORGE J. OLIVIER, JR. AND RUTH
 ANN OLIVIER

Property of
 LEROY H. WHEATLEY AND MILDRED M. WHEATLEY

Property of
 HOWARD RESEARCH AND DEVELOPMENT
 CORPORATION

Rip-Rap to consist of dense rocks of
 random shapes and sizes, resistant
 to the action of air and water, and
 suitable for bank protection. All
 rocks shall weigh a minimum of
 150 pounds.

NOTE:
 Poly Filter X shall be as manufactured
 by Carthage Mills, Inc. Erosion
 Control Division, 124 W. 66th Street,
 Cincinnati, Ohio, or approved equal.



RIP-RAP DETAIL

Scale: 3/8" = 1'-0"



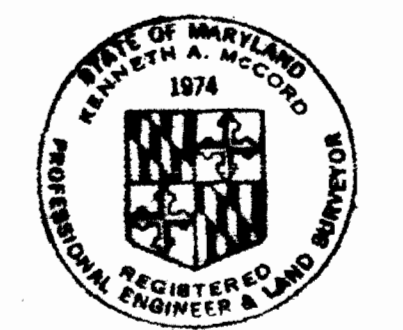
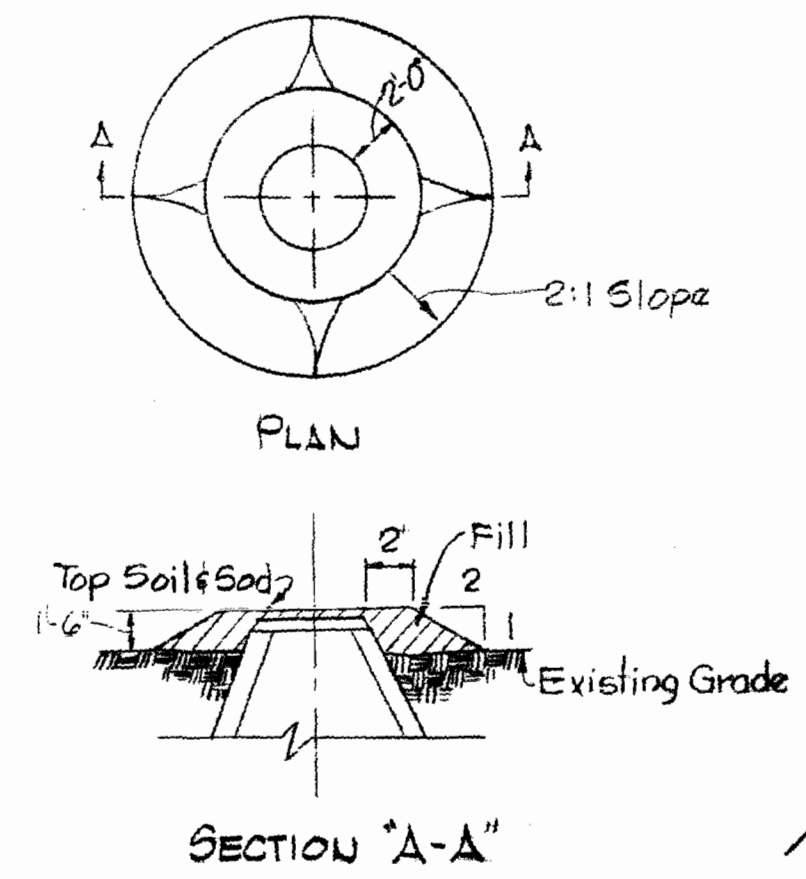
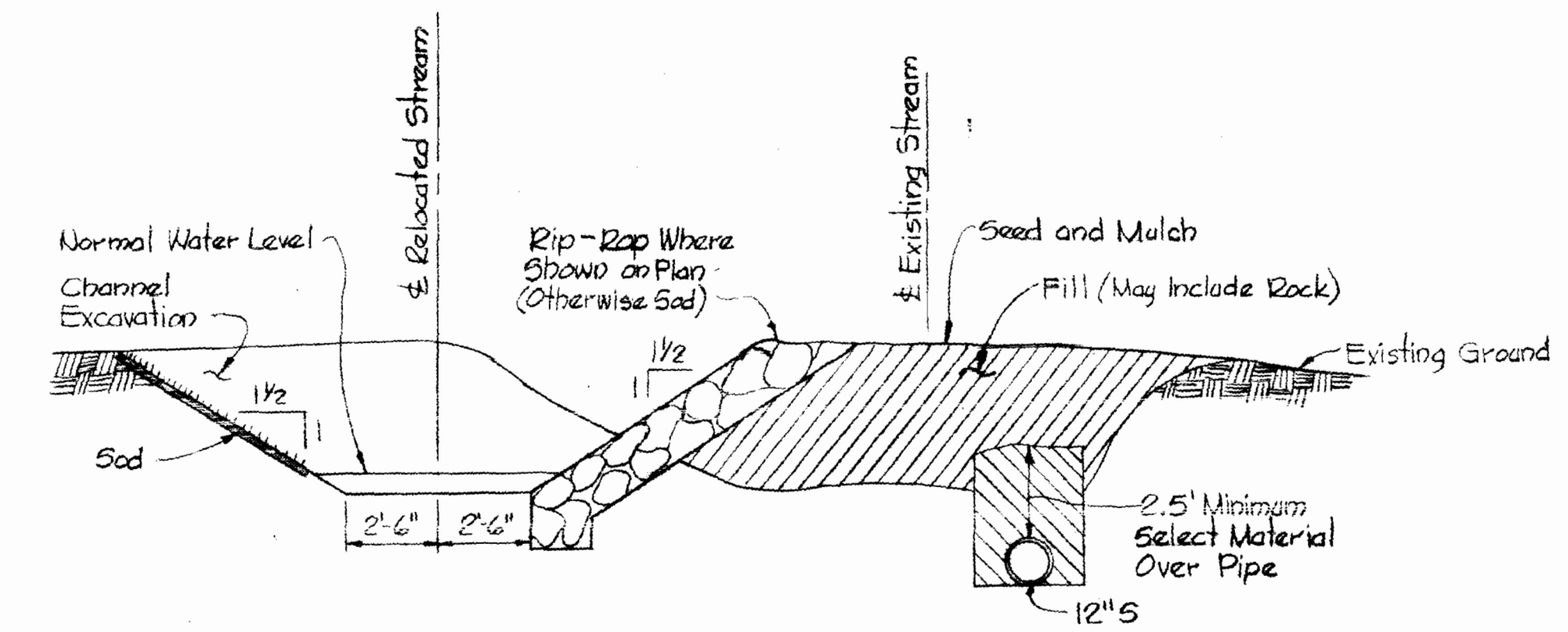
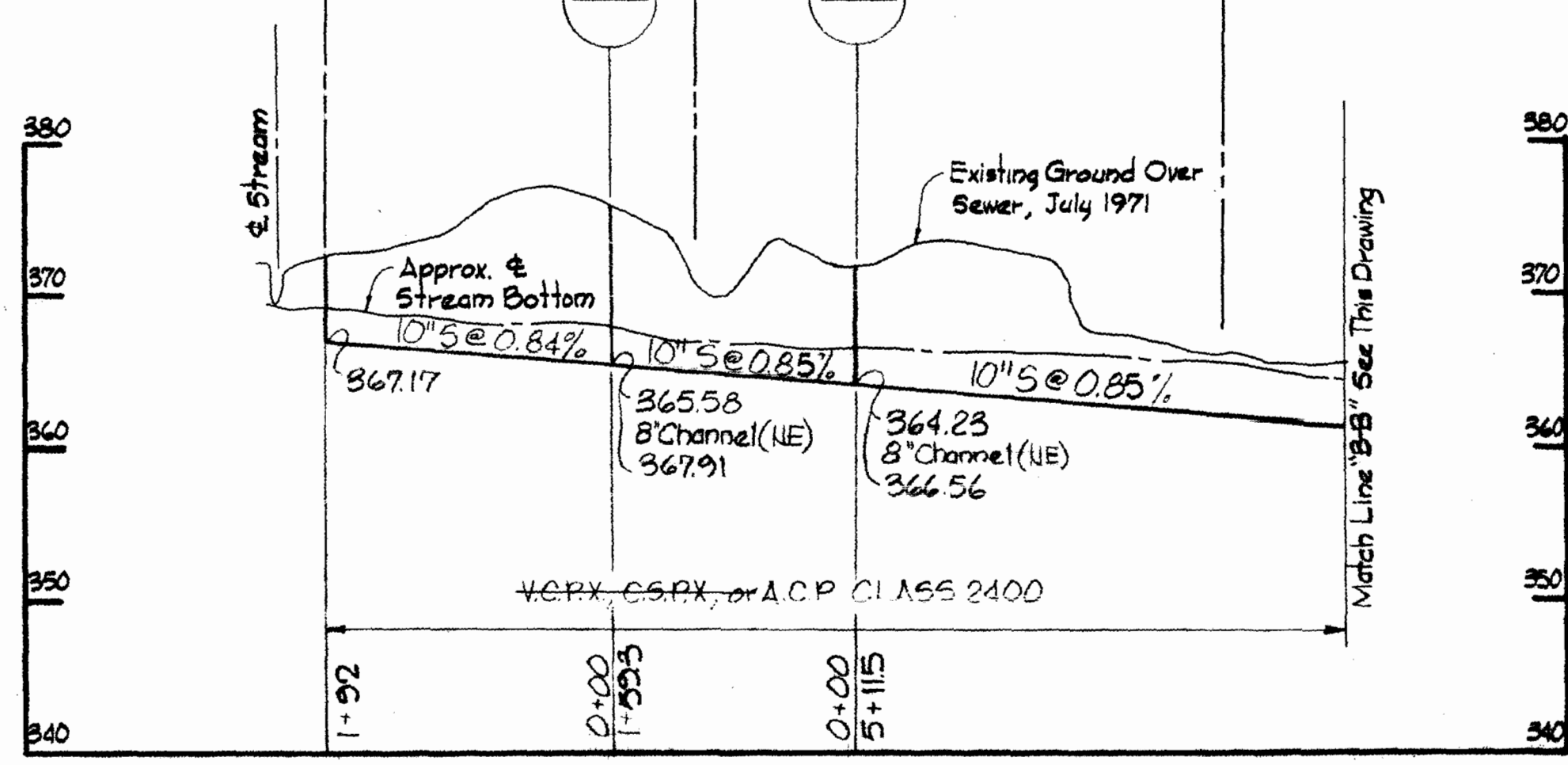
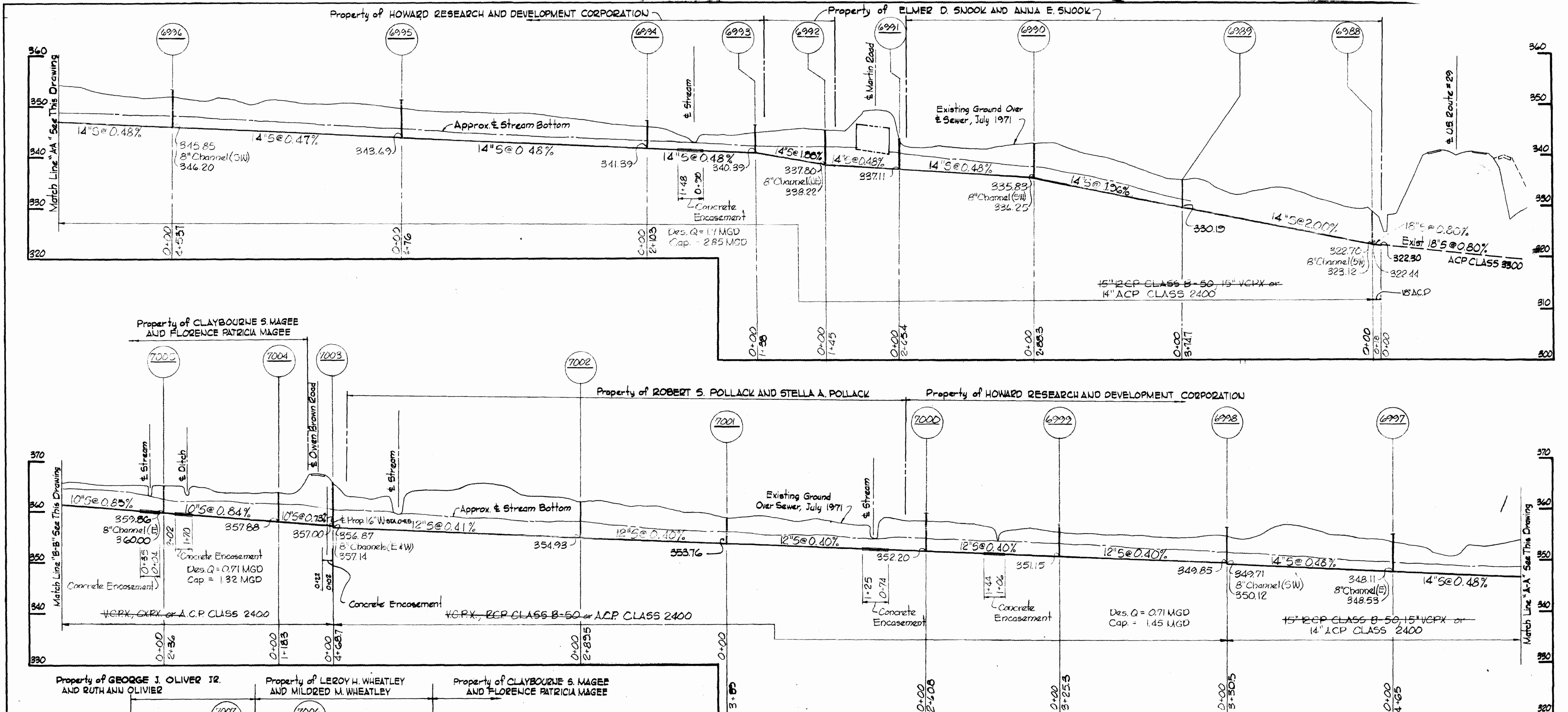
Kenneth A. McLeod

Village of Hickory Ridge
 Section 1 Area 1
 Contract No. C-428-5

W.R.#A. BM.# Z-4 Elev. 573.14
 R.R. Spike base 20' Dead Oak 50' ±
 west of Z-514 @ Fence Line of Top Stream bank
 Marked with flagging - Also used for Ref. by others.

W.R.#A. BM.# Z-5 Elev. 568.01
 R.R. Spike base 12' Maple
 8:24' of station 1+45 ±
 between Z-511 & Z-512

WHITMAN, REQUARDT & ASSOCIATES ENGINEERS 1304 ST. PAUL ST. BALTIMORE, MARYLAND	DEPARTMENT OF PUBLIC WORKS HOWARD COUNTY, MARYLAND 12-12-72 <i>W.O. Falbert</i> CHIEF - BUREAU OF WATER AND SEWER	CONTRACT NO. C-428-S	PLAN OF SEWER MAINS	COLUMBIA VILLAGE OF HICKORY RIDGE ELECTION DISTRICT - CLARKSVILLE - NO.5	DRAWING NO. 3 OF 4 SCALE 1" = 50' 497-477 498-477
-----------------------------------------------------------------------------------------	-------------------------------------------------------------------------------------------------------------------------------	----------------------	------------------------	--------------------------------------------------------------------------------	------------------------------------------------------------



Kenneth M. Lord

Village of Hickory Ridge
Section 1 Area 1
Contract No. C-428-WMS

-5.14

WHITMAN, REQUARDT & ASSOCIATES
ENGINEERS

DEPARTMENT OF PUBLIC WORKS
HOWARD COUNTY, MARYLAND
12-1272
W O Pollack
CHIEF - BUREAU OF WATER AND SEWER

CONTRACT NO. C-428-S

PROFILES OF
SEWER MAINS

COLUMBIA
VILLAGE OF HICKORY RIDGE
ELECTION DISTRICT - CLARKSVILLE - NO. 5

DRAWING
NO. 4
OF 4

SCALE
H: 1"=10'
V: 1"=40'

11.00.1972